

CUSTOM CONTENT

MAY 18, 2026

WOMEN OF INFLUENCE: ATTORNEYS



WELCOME TO THE 2026 EDITION OF THE LOS ANGELES BUSINESS JOURNAL'S SPECIAL SUPPLEMENT HONORING the region's most influential women legal professionals, *Women of Influence: Attorneys*.

There are some particularly stellar attorneys in Los Angeles who happen to be women and we've alphabetically listed some of the very best of them here, along with details about their careers, practices and relevant recent successes they've achieved.

The women covered in these pages have been recognized for exceptional legal skill and achievement across the full spectrum of responsibility, exemplary leadership as evidenced by the highest professional and ethical standards, and for contributions to the Los Angeles community at large.

Methodology: The professionals featured in these pages did not pay to be included. Their profiles were drawn from nomination materials submitted to the Los Angeles Business Journal. Those selected for inclusion were reviewed by the editorial department. The professionals were chosen based on a demonstration of impact made on the profession and on the Los Angeles community.

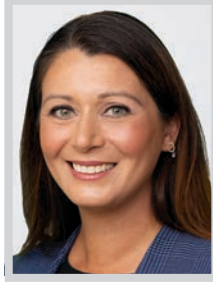
WOMEN OF INFLUENCE: ATTORNEYS

**AISHA SHELTON ADAM**

Managing Partner
Adam Investigations Counsel

As the founder and managing partner of Adam Investigations Counsel, Aisha Shelton Adam leverages more than 20 years of experience handling labor, employment, and business litigation to provide rigorous, yet sensitive, unbiased investigations that identify cultural issues to help employers resolve conflicts, mitigate litigation risks, and restore confidence in their workplaces.

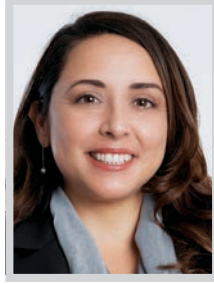
Adam holds certificates from both the Association of Workplace Investigators and T9 Mastered and is well-versed in conducting investigations into misconduct allegations for public, private, and education-sector employers. She also actively engages in pro bono work, utilizing her legal expertise to provide valuable services to individuals and organizations who may not have access to legal representation.

**ALEXIS ALONZO**

Partner
Holland & Knight

Alexis Alonzo has built a distinguished career as a real estate attorney whose work has had a measurable and lasting impact on housing production, landbanking, and multifamily development across the United States. As a partner at Holland & Knight and the founding co-chair of the firm's nationally active landbanking practice, she has emerged as a leader in structuring and executing complex real estate transactions that directly support the development of thousands of homes nationwide.

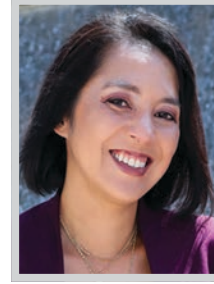
One of Alonzo's most significant career accomplishments is her leadership in the landbanking space. Since 2021, she and her team have closed more than \$6 billion in landbanking transactions, enabling the development of more than 60,000 homes across multiple markets.

**SUSIE ALTAMIRANO**

Partner
Olivarez Madruga Law
Organization LLP

As City Attorney for two municipalities and Assistant City Attorney for another municipality in Los Angeles County, Susie Altamirano, partner at Olivarez Madruga Law Organization LLP, has a career that blends public agency law, government relations, and community-focused leadership while uplifting underserved populations. Advising on a wide range of municipal law issues, Altamirano is part of a trailblazing group of female attorneys at OMLO, with her leadership reflecting both the changing face of city governance and the value of culturally grounded counsel in local government.

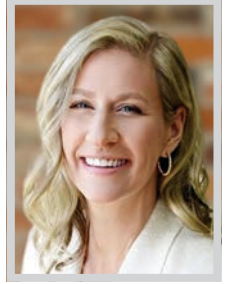
As City Attorney for the City of Law Puente, Altamirano provides complete legal guidance to the city across issues including open government, election compliance, and public contracting.

**MARIBETH ANNAGÜEY**

Managing Partner
Annagüey McCann LLP

From decades of experience at major California firms to becoming named partner and eventually founding her own firm, Maribeth Annagüey has led an impressive legal career practicing in complex business, real estate and entertainment litigation.

Annagüey has fought for and protected clients as wide-ranging as real estate companies, hip hop artists, shareholders in business divorces and entertainment industry professionals. Many of her clients are entertainers and public figures. She has extensive experience with resolving disputes, allegations and claims, including defamation, commission disputes, and breach of nondisclosure agreements, that often arise for artists and creative entrepreneurs. Annagüey uses her 20 years of litigation strength to customize strategies that resolve each client's unique matter and concerns.

**SHARON APPELBAUM**

Founding Attorney
Appelbaum Law, P.C.

Sharon Appelbaum is a leading white collar criminal defense attorney whose work over the past year reflects a rare combination of courtroom advocacy, investigative strategy, and crisis management. As the founder of Appelbaum Law, P.C., she represents individuals and entities in high-stakes federal and state matters where legal exposure is significant and reputational consequences are immediate. Her practice is defined by early intervention, strategic clarity, and the ability to change the trajectory of a case before it fully develops.

Appelbaum recently secured the dismissal of murder and conspiracy charges carrying potential life exposure in Los Angeles Superior Court by dismantling the prosecution's reliance on digital evidence. She demonstrated that GPS data and social media activity could not establish intent.

**LILIT ASADOURIAN**

*Partner; Insurance Recovery and
Counseling Group Co-Chair*
Barnes & Thornburg

Co-chair of Barnes & Thornburg's Insurance Recovery and Counseling Group Lilit Asadourian is among California's most accomplished insurance recovery attorneys, distinguished by her career of precedent-setting victories, sophisticated risk counseling, and exceptional results for policyholders.

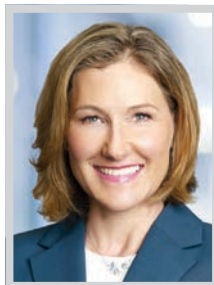
A nationally recognized attorney, Asadourian represents major institutions and Fortune 500 companies across financial services, real estate, technology, healthcare, and life sciences. Her practice spans the full range of executive and professional liability coverage, including directors and officers, errors and omissions, fiduciary liability, EPLI, employee benefits, and mortgage insurance. She is a trusted advisor to companies confronting high-stakes regulatory, financial, and governance risks.

**L. ASHLEY AULL**

Partner
Munger, Tolles & Olson LLP

L. Ashley Aull is an accomplished trial lawyer who handles business-critical and crisis matters, including patent trials, high-tech products liability cases and class actions. She has led more than a dozen trials, arbitrations and other high-stakes evidentiary hearings, demonstrating both courtroom skill and the strategic command required to guide complex cases from start to finish.

Previously, Aull served nearly a decade as a federal prosecutor. That experience gives her a rare insider's perspective when counseling clients through government investigations and defending white-collar matters. Aull is currently trial counsel for Snap in ongoing multidistrict litigation and coordinated California state court proceedings alleging injuries to minors from alleged "addiction" to social media.

**KERI CURTIS AXEL**

Partner
Waymaker LLP

One of California's leading white collar lawyers, Keri Curtis Axel defends clients in criminal and regulatory investigations and handles high-stakes civil and criminal litigation in courts and in arbitration. Axel is a former federal prosecutor and a former enforcement staff attorney at the Securities and Exchange Commission, where she oversaw countless investigations and led trial teams in federal court. Now, as a first-chair trial lawyer, she draws on this experience to help her clients defend against investigations and fight criminal charges around the country.

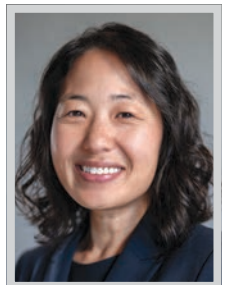
Axel is well known for her tenacity in the courtroom, particularly in high-profile, high-stakes cases that concern novel legal issues and unprecedented factual scenarios. When a client's finances, reputation, and liberty are on the line, Axel protects their rights and safeguard their future.

**JESSICA BABRICK**

Shareholder; Managing Director
Weinstock Manion

Jessica Babrick is a managing director, member of the Management Committee, and is the chair of the Litigation Department at Weinstock Manion. Babrick resolves disputes involving trusts, estates, probate and conservatorships for Los Angeles' most wealthy constituents. She is known for being a fervent advocate for her clients, and works closely with them to efficiently and effectively handle claims that often never make it into the public purview.

Babrick represents beneficiaries, fiduciaries and financial and charitable institutions in a wide variety of contested trust and probate matters, and works closely with them to efficiently and effectively resolve claims concerning breach of fiduciary duty, undue influence, lack of capacity and the validity of wills and trusts.

**DIANE BANG**

Counsel
Umhofer, Mitchell & King LLP

While studying at Loyola, Diane Bang was a law clerk for both the California Attorney General's Office, Torts and Condemnation Division, and the Los Angeles County District Attorney's Office. Diane received her master's degree in cross-cultural studies from Fuller Theological Seminary before attending law school. She is conversational in Korean.

Among Bang's representations has been serving as trial counsel for the UMK team that won a \$21 million award in a federal civil jury trial, finding all controlling shareholders, board members, and officers liable for breach of fiduciary duty & corporate waste case involving a \$250 million company. She also served as trial counsel for victims of embezzlement in FINRA arbitration against financial institution—case settled in victims' favor after one week of trial.

Congratulates Los Angeles Business Journal Women of Influence



MANAGING SHAREHOLDER

Mahru Madjidi

\$155.4 Million – Public Policy & Retaliation Jury Verdict

\$103 Million - Age Discrimination Jury Verdict

\$14 Million – Gender Discrimination Jury Verdict

\$6.3 Million – Age Discrimination & Retaliation Jury Verdict

\$5.4 Million – Whistleblower Retaliation Jury Verdict

\$3.5 Million – Fraud Jury Verdict

SHAREHOLDER

Rosie Zilifyan

\$16 Million – Disability Retaliation Settlement

\$5.4 Million – Whistleblower Retaliation Jury Verdict in Galvan v. UPS

\$4.77 Million – Failure to Accommodate Disability Settlement

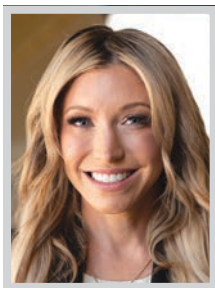
\$3.1 Million – Sexual Harassment and Discrimination Settlement

\$3 Million – Whistleblower Retaliation Settlement

\$2 Million – Unpaid Commissions Settlement



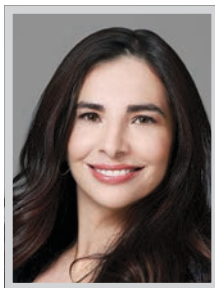
WOMEN OF INFLUENCE: ATTORNEYS

**ALEXANDRA BARON**

CEO; Managing Attorney
Baron Family Law

Alexandra A. Baron, CFLS, has built a reputation as one of California's most strategic and forward thinking family law attorneys. As founder, CEO, and managing attorney of Baron Family Law, she has grown a Sacramento rooted practice into a statewide, concierge level firm with a Los Angeles County presence in Beverly Hills. Her work is distinguished by a rare combination of courtroom strength, business discipline, and a sophisticated client experience designed for high net worth individuals, executives, entrepreneurs, public figures, and legacy families.

Baron leads matters involving high asset divorce, move away custody, domestic violence, prenuptial and postnuptial agreements, support, and post judgment issues. She is especially skilled in cases involving complex financial structures.

**JILL BASINGER**

Partner
Stris & Maher LLP

Jill Basinger joined Stris & Maher this year to lead its prominent Media, Entertainment, and Sports Litigation Practice. She arrives as a go-to lawyer to handle the most consequential disputes in entertainment and beyond. Prior to joining the firm, Basinger worked side-by-side with famed trial lawyer Patty Glaser of Glaser Weil and then served three years as the first chief legal officer of Discovery Land Company (here she led legal strategy and advised the CEO and executive management on the company's highest-stakes matters, overseeing complex litigation, corporate governance, major transactions (including mergers and joint ventures), and regulatory matters.

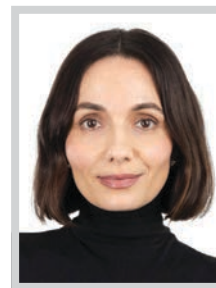
Since joining the firm, Basinger has landed with a splash. In addition to significant media coverage of her arrival, she is already representing clients in multiple high-stakes and high-profile matters.

**CHANDRA BEATON**

Partner
LightGabler LLP

Chandra Beaton, partner and litigation department chair at LightGabler LLP, is one of the top employment litigation attorneys in the tri-counties. As the partner in charge of managing the litigation practice at LightGabler LLP, she oversees 15 litigation attorneys, seven paralegals and their cases on behalf of employers and managers in all types of employment-related disputes. In the past seven years under her guidance, the firm has successfully represented hundreds of clients in employment matters in court, arbitration proceedings and before government administrative agencies.

As the partner in charge of managing the litigation practice at LightGabler LLP, Beaton oversees 15 litigation attorneys, seven paralegals and their cases on behalf of employers and managers in all types of employment-related disputes.

**MARINA BECK**

Partner
Elkins Kalt Weintraub
Reuben Gartside LLP

Marina Beck is a partner at Elkins Kalt, and co-chair of the firm's Family Law practice group, where her primary focus is the litigation of sophisticated marital dissolution issues and paternity issues.

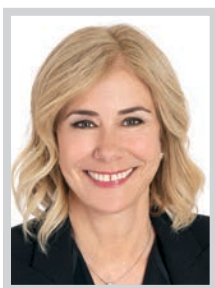
Beck handles high profile, high asset and complex cases multi-jurisdictional cases, representing high net worth individuals or their spouses in many different fields, including the entertainment and sports industry, tech and business executives, philanthropists, doctors, attorneys, bankers and other professionals, with the utmost discretion and attention to detail. The matters Beck has resolved, through trial or settlement, include matters involving business and commercial contracts, entertainment, intellectual property and trade secrets, private equity and real estate enterprises.

**KARLA BERENTSEN**

Partner; Chair, Trusts & Estates
Department
Hahn & Hahn LLP

Karla Berentsen is the chair of Hahn & Hahn's Trust and Estates practice group and handles complex estate planning and trust and estates administration.

Berentsen's most successful career accomplishments have come from the connection she has with her clients and the peace of mind that she provides. While people are not exactly thrilled to call their estate planning attorney to discuss disability and death, she takes a great deal of pride in her ability to make estate planning concepts palatable and relatively painless. Often, clients tell her that she made the process easy on them. Karla loves helping clients get their estate plans off of their "to do" lists so they can get back to enjoying their lives.

**STEPHANIE BLUM**

Certified Family Law Specialist
Reuben Raucher & Blum

Stephanie Blum is a certified family law specialist with more than 25 years of experience and is widely recognized as one of California's leading family law attorneys. She is known for her ability to manage highly complex and emotionally charged matters involving custody disputes, domestic violence proceedings, and sophisticated financial issues.

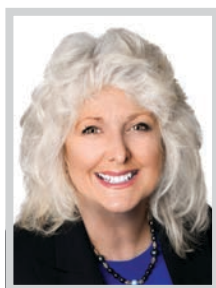
Blum's recent work includes successfully leading an 18 day domestic violence restraining order trial involving a contested custody dispute over three children. In a rare outcome, the court adopted her argument that the best interests of the children required a departure from the typical structure in such cases, awarding her client sole legal and physical custody of two of the children and issuing a no visitation order against the opposing party pending further proceedings.

**DOMINIQUE CAAMANO**

Partner
Kibler Fowler & Cave LLP

Dominique Caamano is a powerhouse trial attorney and former federal prosecutor who made history as the first female partner at Kibler Fowler & Cave LLP—a distinction she earned just one year after joining the firm—and whose courtroom achievements include receiving the DOJ Partner Award for her role in the Office of Professional Responsibility's successful prosecution of a corrupt federal employee.

A Spanish-speaking immigrant from Ecuador, Caamano brings strong expertise to high-stakes fraud, corruption, and regulatory enforcement matters, while also demonstrating deep commitment to community service through her role on the Board of Directors of Teach Democracy and her prior service as the US Attorney's Office environmental justice coordinator.

**MARY CRAIG CALKINS**

Partner, Insurance Recovery
Blank Rome LLP

Mary Craig Calkins is one of the nation's most trusted and accomplished policyholder advocates, with more than 35 years of precedent-shaping insurance recovery experience across directors and officers liability (D&O), errors and omissions, media and entertainment, intellectual property, cyber/privacy, e commerce/technology, first party property, and business interruption claims.

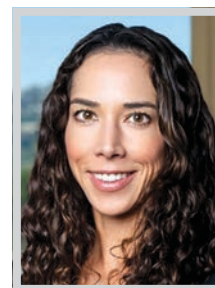
As lead coverage counsel for an international media and communications company, Calkins recovered over \$150 million in insurance to resolve multiple shareholder class and derivative actions. She recovered \$90 million for a television news company—one of the earliest media matters to test insurance issues arising from the #MeToo movement. For a US oil and gas exploration company, she negotiated insurer funding of a shareholder class action.

**LISA CALLIF**

Partner
Donaldson Callif Perez LLP

Go-to legal advisor for award-winning independent filmmakers, Lisa Callif is nationally recognized for her expertise on copyright, fair use, and clearance law. Now focusing on the intersection of AI, personal rights, and copyright, her counsel has shaped a range of acclaimed, high-stakes documentaries and scripted projects, empowering creators to tell bold, legally-sound stories.

Callif's representations include Unapologetic Projects; leading nonfiction entertainment studio XTR and artist-led generative AI film and animation studio Asteria across all their projects and deals from AI to development, production, and distribution, including their own Doc + platform; serving as production and clearance counsel on HBO's Pee-wee as Himself; and acting as clearance counsel on the HBO documentary, Billy Joel: And So It Goes.

**TAYLOR A. CARICO**

Partner
Ervin Jessup Cohen LLP

Taylor Carico is a Partner at Ervin Jessup Cohen whose focuses her practice on estate planning, probate, and trust law, with a particular emphasis on the specialized needs of family office and private wealth clients. Carico provides the steady guidance necessary to navigate the complexities of multi-generational wealth and legacy. Her work is defined by a commitment to delivering tailored solutions that address the intersection of personal family goals and sophisticated legal frameworks.

The depth of Carico's practice is supported by a significant level of academic and professional specialization. She earned her LLM in Estate Planning from Western New England University, providing her with a rigorous foundation in the financial and legal nuances of the field.

HUESTON HENNIGAN LLP

Congratulations



ALLISON LIBEU

ALISON L. PLESSMAN

Women of Influence: Attorneys

—Los Angeles Business Journal

WOMEN OF INFLUENCE: ATTORNEYS

**ANN CHEN**

Deputy Chair, Capital Markets
& Corporate
Loeb & Loeb LLP

With over two decades of experience as a transactional attorney, Ann Chen has built a reputation as a trusted advisor on some of the most complex and high stakes matters in her field. She brings not only superb strategic insight and cross-border expertise, but also a rare ability to align legal strategy with her clients' broader business objectives. Her practice spans a wide array of industries, and in each, she demonstrates a nuanced understanding of both legal intricacies and practical considerations that drive decision-making.

Whether navigating a high-profile music rights sale or shepherding a transformative milestone event, Chen delivers tailored, practical guidance that enables clients to mitigate risk, maximize value, and execute with confidence. She is known for leading sophisticated transactions to successful outcomes.

**ESTHER CHO**

Partner-in-Charge, Southern California
Stradley Ronon Stevens
& Young, LLP

Esther Cho is a nationally respected litigator and one of the driving forces behind Stradley Ronon's expansion into Southern California, where she serves as partner-in-charge and sits on the firm's board of directors. As co-chair of the firm's Financial Services Litigation & Enforcement practice, she brings more than two decades of experience navigating high-stakes financial, regulatory, and employment matters for some of the country's most prominent financial institutions.

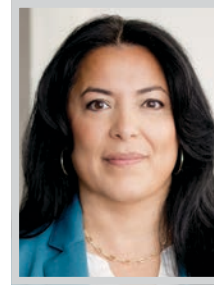
Cho has built a reputation for her ability to manage and win complex cases in state and federal courts and before major arbitration forums. She has handled hundreds of matters spanning allegations of unsuitable investment recommendations, fraud, breach of fiduciary duty, and supervisory failures.

**MAITE COLÓN**

Senior Counsel
Andrade Gonzalez LLP

Maite Colón stands out as an exemplary legal professional, serving as a skilled and respected senior counsel at Andrade González LLP. What distinguishes Colón is her consistent ability to excel in high-stakes matters, deliver meaningful results for clients, and lead with integrity.

Colón's practice includes representing public entities in both insurance coverage and liability matters, and representing large corporate clients in catastrophic injury and wrongful death cases arising from major construction and project development disputes. She has secured numerous favorable settlements in high-stakes commercial, construction, and public-entity matters, including multi-million-dollar disputes involving public infrastructure and catastrophic workplace incidents.

**ERIKA CONTRERAS**

Partner
Panish | Shea | Ravipudi LLP

Erika Contreras is a partner at Panish | Shea | Ravipudi LLP and focuses her practice on catastrophic personal injury, wrongful death, and motor carrier liability cases. Contreras is a true advocate for her clients and has obtained hundreds of millions of dollars in awards.

Contreras was a recipient of the 2023 California Lawyers Attorney of the Year Award for her work on *Sepulveda v. Yucaipa-Calimesa Joint Unified School District*. Contreras worked alongside firm partner Robert Glassman and obtained a \$15,750,000 settlement for the wrongful death of 13-year-old Adilene Carrasco who died as the result of a mismanaged asthma attack at school. Contreras and Glassman were able to obtain five non-monetary terms which included more training for employees to help prevent this type of tragedy from ever happening again.

**DANICA CRITTENDEN**

Partner
Shernoff Bidart Echeverria LLP

Danica Crittenden is a partner in the Claremont office of Shernoff Bidart Echeverria LLP. Crittenden's litigation practice includes insurance-bad faith and personal injury cases.

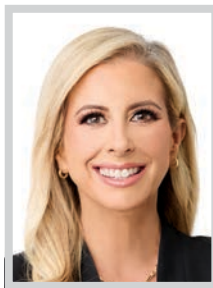
After joining the firm in 2010, Crittenden worked on a number of high-profile cases, helping to obtain multiple seven and eight-figure verdicts and settlements against some of the largest insurance companies in the nation. She achieved a \$28.2 million medical malpractice jury verdict against Kaiser in Los Angeles Superior Court for a teenager who had her right leg, half of her pelvis, and a portion of her spine removed as a result of a four-month delay in diagnosis of a bone cancer. She also obtained a \$3.3 million jury verdict against an insurance company for mishandling a fire claim.

**TANJA DARROW**

Shareholder
Littler Mendelson P.C.

Tanja L. Darrow is a highly accomplished litigation attorney whose career is distinguished by excellence, leadership, and a deep commitment to justice and equity. As co-chair of Littler's Litigation and Trials Practice Group and a core member of the Complex Litigation and PAGA Practice Group, she leads strategy on some of the firm's most high stakes labor and employment matters. Her practice spans wage and hour disputes, discrimination and harassment claims, and compliance with key employment statutes including Title VII, the ADA, and the FMLA.

Darrow is widely regarded for her courtroom strength. She has served as lead counsel in hundreds of cases and has consistently secured complete defense verdicts in every trial she has conducted.

**LOURDES DE ARMAS**

Partner; Lead Trial Attorney
Omega Law Group

Lourdes De Armas has represented clients in a variety of cases from contractual disputes, class actions, amusement park injury, wrongful death litigation, catastrophic personal injury, insurance bad faith, and educational fraud.

De Armas represented over 800 inmates of the California Department of Corrections in cases involving inadequate medical care and treatment. She also represented over 22 named plaintiffs and a certified class of former students alleging that the post-secondary school violated the California's Education Code and consumer protection laws by falsely claiming that school was accredited. The case culminated in a multi-million-dollar settlement. Lourdes also represented a client in an amusement park injury case that resulted in a design change in the ride. The case also resulted in a confidential settlement.

**THEANE EVANGELIS**

Partner; Co-Chair, Global Litigation
Practice Group
Gibson, Dunn & Crutcher LLP

Theane Evangelis is a partner in the Los Angeles office of Gibson Dunn. She is co-chair of Gibson Dunn's global Litigation Practice Group and one of the country's leading litigators. Evangelis serves on the firm's Executive Committee, and she previously served as co-chair of the Class Actions Practice Group. She represents clients in federal and state courts throughout the nation in a wide spectrum of cases and has argued and won high-profile, groundbreaking appeals across the country, including in the Supreme Court of the United States.

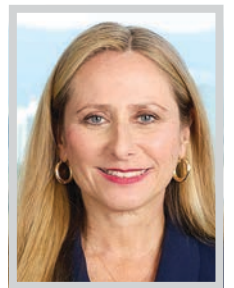
Evangelis is also a member of the Appellate, Class Actions, Labor and Employment, Media, Entertainment, and Technology, and Crisis Management Practice Groups. She joined Gibson Dunn after serving as a law clerk to Justice Sandra Day.

**EMILY EVITT**

Partner
Mitchell Silberberg & Knupp LLP

Emily Evitt is a powerhouse litigator at the intersection of creativity and the law. Specializing in copyright and trademark litigation, Evitt represents some of the most influential names in entertainment, including major film and television studios, record companies, music publishers, and video game companies, defending their creative works against some of the most complex legal challenges in the industry today.

Evitt's practice spans copyright and trademark disputes, idea submission and implied contract claims, right of publicity, First Amendment and defamation matters, and California's anti-SLAPP statute, as well as labor and employment issues for entertainment clients. Over the past 12 to 18 months, Evitt has secured a string of significant victories that are shaping the boundaries of copyright law in the entertainment industry.

**JULIE GERCHIK**

Partner; Co-Chair, Litigation Department
Glaser Weil

Julie R. F. Gerchik is an accomplished litigation partner whose distinguished legal career is matched by an extraordinary commitment to mentoring and developing all lawyers, including particularly women lawyers. Prior to joining Glaser Weil, Gerchik practiced for more than a decade at Latham & Watkins in Los Angeles, where she gained sophisticated litigation experience and a deep appreciation for rigorous training and professional excellence.

At Glaser Weil, Gerchik has grown her practice into a thriving one comprised of complex commercial litigation and entertainment matters, and representing an enviable roster of domestic and international clients — including investment firms, entertainment and media companies, financial services entities and high net worth individuals.

Jill Basinger Radha Pathak

2026 Women of
Influence: Attorneys

Los Angeles Business Journal



Congratulations from your partners



Stris

www.stris.com

WOMEN OF INFLUENCE: ATTORNEYS

**LISA GILFORD**

Partner
Sidley Austin

Lisa Gilford is a nationally recognized complex civil litigator who focuses on class actions, multi-district litigation, products liability matters and large-scale commercial disputes. She is lead counsel to clients in a wide variety of industries including automotive, pharmaceutical, communications, oil and gas, aerospace and chemical manufacturing, sports and higher education. Her advocacy has shaped the outcome of numerous class actions and aggregate litigation matters nationwide.

Adept at handling matters with scientific or technical aspects, Gilford frequently works with engineers, physicians, computer scientists, economists and other technical experts to prepare them for deposition and trial. Because of this expertise, she is often retained to provide litigation mitigation and counseling services for large corporate transactions.

**TAMERLIN GODLEY**

Partner; Chair, Entertainment Litigation Practice
Willkie Farr & Gallagher LLP

Tammerlin Godley joined Willkie in February 2026 as chair of the firm's Entertainment Litigation group. Godley excels at handling complex business litigation disputes and sensitive company investigations. She advises major studios, networks and Fortune 500 companies across industries and helps them protect their significant assets and lead investigations in times of crisis.

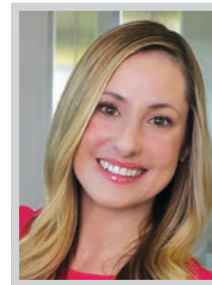
Over the course of her career, Godley has been a leader of numerous high stakes litigations, including representing a company involved in a large oil spill and representing Warner Bros. in the highly publicized dispute with Charlie Sheen. She has also led numerous high profile investigations, including the fraud case at Los Angeles Water & Power and allegations of sexual assault on the set of Bachelor in Paradise.

**GALI GRANT**

Partner
Glaser Weil

Gali Grant is an experienced trial attorney and partner in Glaser Weil's Litigation Department. Grant maintains a diverse practice that includes both national and international cases involving high-stakes corporate and financial disputes, complex contract disputes, intellectual property, entertainment, and employment disputes.

Grant represents a range of clients, including large and small businesses, film production companies, studios, financial institutions, investment funds, high-net-worth individuals, corporate directors, hotels and municipalities. Her recent matters include her representation of a billionaire record executive and co-founder of a Hollywood studio in a high-stakes marital contract dispute filed in Los Angeles County Superior Court.

**CATHLEEN GREEN**

Partner
Stubbs Alderton & Markiles, LLP

Cathleen Green, partner at Stubbs Alderton & Markiles, LLP's corporate and entertainment group, is a trusted architect behind many of the entertainment industry's most sophisticated corporate deals. She provides strategic counsel to A-list talent, production companies, and digital media companies on complex joint ventures, financing, mergers and acquisitions, licensing, and high-value endorsement/sponsorship transactions.

Over the past year, Green was a member of the SA&M team that advised client Propagate Content, the production and talent firm founded by Ben Silverman and Howard T. Owens, in its acquisition of Sway Social, a creator-first agency focused on helping digital talent transform content into measurable revenue. Green and the team assisted in negotiating the deal for the company.

**DOLLY HANSEN**

Partner
Umhofer, Mitchell & King

Dolly K. Hansen is an experienced attorney whose practice includes both complex large-scale civil litigation and a wide range of criminal defense matters. Hansen was an associate in the Los Angeles office of Skadden, Arps, Slate, Meagher & Flom, LLP for six years, where her practice included the representation of large institutions and prominent individuals in both high-profile and discreet matters. As part of her practice, Hansen represented clients ranging from Fortune 500 companies to individual pro bono clients.

Hansen then spent almost a decade at Spertus, Landes & Umhofer representing entities and individuals in high-stakes litigation. Some of her notable representations include representing a key executive of a solar energy company in an arbitration involving the alleged misappropriation of trade secrets.

**JULIE HAWKINSON**

Founding Partner
Atheria Law, PC

Julie Choi Hawkinson is a founding partner of Atheria Law and a nationally recognized insurance coverage attorney who advises insurers on complex cybersecurity and privacy risks facing today's business environment.

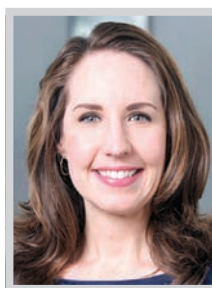
With more than 25 years of experience, Hawkinson represents London, U.S., and international insurers in high stakes matters involving privacy class actions, data breaches, media and technology exposures, and mass arbitration trends, often involving billions of dollars in claimed damages. Hawkinson has earned a stellar reputation for delivering clear, strategic guidance in rapidly evolving areas of law, making her a go-to advisor to leading insurers and businesses navigating the digital economy. Her career accomplishments are distinguished by her role in shaping how the insurance industry responds to emerging risk.

**MARI HENDERSON**

Partner
Quinn Emanuel Urquhart & Sullivan, LLP

A former television journalist and criminal prosecutor turned civil litigator, Mari Henderson brings a genuinely rare combination of storytelling skill, prosecutorial rigor, and courtroom command to complex, high-stakes disputes. In ten years, she has tried more than 30 cases at trial and arbitration and established herself as one of Quinn Emanuel's most effective courtroom advocates. Her work spans some of the most sensitive and high-profile matters, including racial harassment, sexual assault, defamation, and emerging issues involving deepfake technology.

What distinguishes Henderson from others in her field is not simply the range of matters she handles, but the consistency with which she delivers results across them. She combines meticulous preparation with fearless courtroom advocacy.

**ESRA HUDSON**

Partner; Leader, Employment and Labor
Manatt, Phelps & Phillips, LLP

As leader of Manatt's Employment and Labor practice, Esra Hudson has established herself as the go-to employment adviser for iconic entertainment companies, national insurance providers, well-known medical centers and leading financial services companies through her deft defense against wage and hour class and collective actions, PAGA representative matters, and trade secret and unfair competition claims.

With extensive experience in crisis management and media relations, including in sensitive matters involving executives and high-profile individuals, Hudson has successfully represented employers in proceedings across a number of forums, as well as in alternative dispute resolution and arbitration, often saving her clients financial and reputational damage in claims, or even avoiding litigation altogether.

**TERESA HUGGINS**

Partner
Waymaker LLP

Teresa Huggins handles complex commercial litigation at both the trial and appellate level, with an emphasis on intellectual property, FinTech, and First Amendment matters. She has significant experience representing executives, entrepreneurs, investors, and companies on both the plaintiff and defense side in state and federal court, where she regularly achieves decisive victories. Prior to joining Waymaker, she worked in Simpson Thacher & Bartlett's New York Office. Teresa is admitted to both New York and California's bars, giving her practice a coast-to-coast reach.

Huggins is co-lead counsel in Waymaker's ongoing representation of Sunnova Energy Corporation, a Houston-based solar energy provider, in California state and federal court and in arbitration in over 30 consumer protection cases.

**KARYN IHARA**

Partner
Shook, Hardy & Bacon LLP

Shook Partner Karyn Ihara serves as a counsel and has experience in breach of warranty, class action and product liability matters. Her practice has consisted primarily of defending automotive companies in consumer actions in federal and state courts, as well as arbitration. She has won a jury trial, a bench trial and two arbitration hearings. Her experience includes providing strategic advice to clients, defending complex discovery matters, as well as significant motion work. She has regularly attended court hearings, conducts and defends depositions, attends vehicle inspections, participates in mediations and settlement conferences and negotiates settlements.

Ihara has also recently worked an impact litigation matter with Public Counsel's Consumer Rights & Economic Justice project.

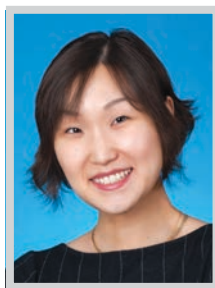
WOMEN OF INFLUENCE: ATTORNEYS

**JI WON KIM***Partner*

Norton Rose Fulbright US LLP

Ji Won Kim is a standout leader in cybersecurity and privacy law and an indispensable member of Norton Rose Fulbright's Global Cybersecurity and Privacy team. A partner in the firm's Los Angeles office, she advises global clients on all facets of cybersecurity and privacy risk management, strategy, governance and incident response. She is a trusted advisor to clients seeking to enhance their cybersecurity and privacy posture and develop compliance programs.

In times of crisis, Kim manages complex cybersecurity investigations, including those involving sophisticated threat actors focused on critical infrastructure entities. Leveraging her significant experience in cross-border investigations and litigation, she engages with regulators and resolves related disputes on behalf of clients across a wide spectrum of industries.

**NARY KIM***Partner*

Kendall Brill & Kelly LLP

Nary Kim is an accomplished litigator who has helped build compelling and convincing cases for a wide range of high-profile clients, including major film and television studios, music labels and brands, top-tier law firms, and leading entertainment figures and artists. She rose to be a KBK partner in just five years, having demonstrated the deep expertise necessary to develop winning cases for KBK's clients.

Kim's practice focuses on entertainment and media and complex litigation, and she has successfully litigated or resolved disputes over profit participation, copyright and trademark infringement, trade secret misappropriation, and film and television distribution agreements. Most recently, she secured summary judgment on behalf of Nirvana, Universal Music Group, and other defendants.

**ANNE KIM***Partner*

Kirkland & Ellis LLP

Anne Kim is a go-to tax and transactional partner for the most sophisticated players in private equity and global asset management, counseling clients such as Ares Management, Clearlake Capital, Cliffwater, H.I.G. Capital and Platinum Equity on complex taxable and tax-free deals, cross-border transactions, and joint ventures where the structuring stakes are highest. What sets Kim apart is the breadth and depth of her expertise across finance, out-of-court restructurings, capital markets, fund formation, cross-border investments and the GP/LP secondaries market, making her time and again, her clients' first call.

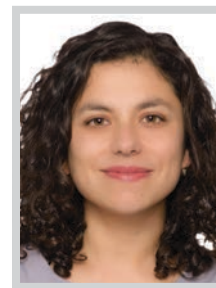
At Kirkland, Kim has distinguished herself as a preeminent tax authority who combines deep tax expertise and intellectual capital with practical deal instinct.

**CELINA KIRCHNER***Partner*

Stubbs Alderton & Markiles, LLP

Celina Kirchner, partner in the Business Litigation Practice at Stubbs Alderton & Markiles, LLP, is a trusted business litigator who helps companies navigate sophisticated disputes across digital media, technology, internet, privacy, insurance, breach of contract, fraud, and complex business disputes.

Known for her practical approach, Kirchner partners closely with businesses to resolve conflicts efficiently and effectively to help stop litigation in its tracks. She also advises businesses on formation, governance and contracting matters. Her experience includes from drafting formation documents, negotiating contracts and vendor agreements, assisting in resolution of contract disputes, pre-litigation dispute resolution, all aspects of litigation, and execution of mergers and acquisitions.

**LIZ KLEBANER***Partner, Environment & Land Use Group*

Nossaman LLP

Liz Klebaner advises private and public agency clients on a variety of complex land use and environmental matters, including California Environmental Quality Act, National Environmental Policy Act, California Coastal Act, Williamson Act, Subdivision Map Act, Planning and Zoning Law, and federal and state environmental regulatory compliance. Klebaner also litigates in state and federal court. Her coverage of new CEQA legislation and other CEQA-related developments has appeared in trade publications and in online and print environmental law news outlets. She also frequently speaks on CEQA, NEPA and coastal law matters.

Klebaner is co-chair of Nossaman's Pro Bono Committee. Her work as Committee co-chair includes mentoring junior attorneys.

Congratulations to Suann MacIsaac

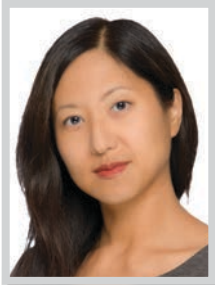
on her recognition as
one of this year's
"Women of Influence: Attorneys."



KHIKS
KINSELLA HOLLEY ISER KUMP STEINSAPIR
ATTORNEYS

khiks.com

WOMEN OF INFLUENCE: ATTORNEYS



YUKIKO KOJIMA
Partner, Infrastructure Group
Nossaman LLP

Yukiko Kojima offers clients unique experience with highly innovative alternative delivery strategies for large-scale infrastructure projects in the US because of her deep knowledge of national best practices as well as Canada's mature P3 market. She primarily advises public agencies in the use of methods such as P3 and design-build, but also represents private-sector participants on select projects. Kojima takes an active role in Nossaman's P3 practice initiatives in the social infrastructure area, and co-authored the Firm's model social infrastructure P3 legislation.

Before joining Nossaman, she was a partner in the leading P3 practice of a Canadian law firm in Vancouver and Tokyo where she assisted successful and shortlisted bidders on numerous award-winning P3 projects in Canada.



VERLAN KWAN
Partner
Keystone Law Group, P.C.

Verlan Y. Kwan, a partner and top probate attorney with Keystone Law Group, P.C., not only serves as a core member of the firm's Executive Committee, overseeing business strategy and direction, but she also supervises the Probate Administration Department, managing and mentoring less experienced attorneys, paralegals and staff members.

Kwan, who's been with the firm since its inception and represented numerous high-profile clients, has been instrumental in propelling Keystone to the ranks of one of the largest and most prominent probate firms in California. With 20 years of legal experience and a reputation for being compassionate, Kwan regularly garners accolades from well-known legal publications and opportunities to share her probate expertise through writing and speaking engagements.



AMY LALLY
Partner; Global Co-Leader, Consumer
Class Actions Practice
Sidley Austin

Amy Lally represents prominent clients from a broad range of products and services industries in commercial litigation matters, including class actions, false advertising claims, and contract disputes.

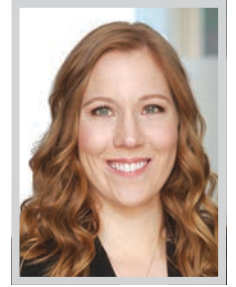
Lally regularly achieves significant success in class action litigation arising under California's Unfair Business Practices Act, the Consumers Legal Remedies Act, California's False Advertising Law, the California Invasion of Privacy Act, as well as false advertising and unfair competition claims under other state and federal laws. She is also recognized for her impressive track record of dismissals, especially in California courts, where dismissals are challenging and in cases where other defense lawyers have not succeeded.



IRENE LEE
Partner
Russ August & Kabat

Irene Lee is a partner at Russ August & Kabat, where she focuses her practice on all aspects of intellectual property, including patent, trademark, copyright protection through registration, enforcement, and licensing.

Lee has extensive experience in trademark and copyright prosecution and litigation with an emphasis on global brand expansion and content management. As a registered patent attorney, she also counsels clients concerning patent litigation and monetization with an eye toward building value to their overall business focus. Lee has managed over 10,000 brands and attendant rights as part of her role in managing IP portfolio for clients such as The Honest Company, Inc., Thor Industries, Airstream, The Carroll Hall Shelby Trust, Fred Segal, and many high profile celebrities and artists.



ALLISON LIBEU
Partner
Hueston Hennigan LLP

Allison Libeu has been instrumental as lead or co-lead counsel in securing some of Hueston Hennigan's most significant trial and arbitration victories, many of which have been precedent-setting. She litigates high-stakes business disputes across a variety of areas, including business torts, contracts, class actions, securities fraud and trade secrets.

Libeu in April 2025 led the team that persuaded the US Court of Appeals for the Ninth Circuit to uphold a \$311 million false advertising trial judgment and permanent injunction she and the Hueston Hennigan team obtained for Monster Energy against rival drink company Vital Pharmaceuticals and its former owner and CEO Jack Owoc. It is believed to be the largest Lanham Act judgment in history. Libeu argued the matter before the panel.



TOTAL COMMITMENT® | thompsoncoburn.com

CONGRATULATIONS TO OUR
LOS ANGELES MANAGING PARTNER

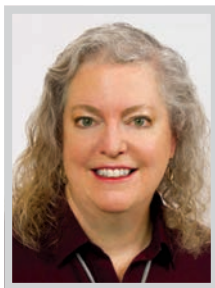
JENNIFER POST

named to the *Los Angeles Business Journal's*

**2026 Women of
Influence: Attorneys**



WOMEN OF INFLUENCE: ATTORNEYS



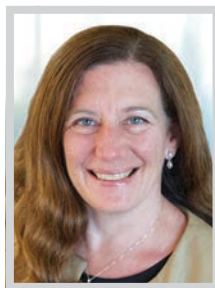
MEG LODISE

Partner

Sacks, Glazier, Franklin, Lodise, McMurtrey & Scheerer, LLP

With nearly four decades in practice, Meg Lodise is widely regarded as one of California's leading trusts and estates litigators, handling some of the most complex and high-stakes disputes through trial and appeal.

In *O'Connor v. O'Connor* (26 Cal.App.5th 871), Lodise obtained a precedent-setting published decision that clarified California law on powers of appointment, a ruling that continues to guide courts statewide. Underscoring her respect in the legal community, Lodise was appointed by the Probate Court as Guardian Ad Litem for the minor children of entertainer Michael Jackson, a responsibility she carried out soon after Jackson's death in 2009, and concluded in February 2020 with his youngest child, Prince Michael Jackson II turning 18.



AMY JANE LONGO

Partner

Ropes & Gray

Amy Jane Longo, office managing partner of Ropes & Gray's Los Angeles office, has nearly 30 years of experience in securities litigation, with significant first-chair experience both as a defense counsel and as a senior SEC trial attorney.

Longo served as the head of the SEC's Los Angeles Regional Office trial unit for nearly five years, building a formidable reputation throughout the Southwest region. As a founding partner in Ropes & Gray's Los Angeles office since 2022, Longo leads litigation and enforcement matters that span commercial and securities litigation, SEC and DOJ enforcement—particularly involving asset managers and public issues, and hot-button cryptocurrency issues, including for some of California's most prominent investment funds, public companies, and private companies.



DANA LOWY

Founding Partner

Meyer, Olson, Lowy & Meyers LLP

Dana Lowy is a founding partner at Meyer, Olson, Lowy & Meyers, LLP, a family law firm located in Century City. Founded in 2000 entirely by female partners, with the goal of representing clients in high conflict and complex divorces and custody cases, the firm now includes approximately 25 attorneys, who have expertise in all aspects of family law and are adept at both mediating and litigating cases for men and women.

As a founding partner at Meyer, Olson, Lowy & Meyers, LLP, Lowy brings over three decades of experience to divorce cases. She protects her California clients' assets and does everything she can to prioritize the well-being of the children involved. Lowy's specialty is pre and post-nuptial agreements.



SUANN MacISAAC

Partner

Kinsella Holley Iser Kump Steinsapir LLP

Suann MacIsaac, partner at leading entertainment law boutique Kinsella Holley Iser Kump Steinsapir, is widely regarded as one of the top attorneys in her field for her representation of A-list actors, musical performers, writers, producers, executives, business managers, talent agents, and others within the entertainment industry.

MacIsaac has successfully prosecuted and defended numerous cases involving claims for breach of contract, fraud, breach of fiduciary duty, unfair competition, copyright infringement, trademark infringement, and trade secret misappropriation. Her representations have included high-profile matters such as representing former CNBC anchor Hadley Gamble, in connection with her sexual harassment claims against Comcast and its subsidiaries.



AMY MACLEAR

Co-Founding Partner; Trial Attorney
Narain Maclear LLP

Amy Maclear is a co-founder of Narain Maclear LLP, launched on January 1, 2026, with partner Sabrina Narain to reimagine how high-volume automotive litigation is defended in California. The firm was built as a purpose-driven alternative to traditional law firm models, leveraging technology, data-driven strategy, and disciplined staffing to confront the unchecked growth of consumer warranty litigation and to drive systemic reductions in case volume, cost, and court congestion.

Before co-founding Narain Maclear LLP, Maclear was a partner at Shook, Hardy & Bacon LLP and Gordon & Rees LLP, where she developed a reputation as a pragmatic, results-oriented litigator trusted with complex automotive matters. Her practice focuses on defending auto manufacturers and mobility companies.



We congratulate
**CATHLEEN GREEN
& CELINA KIRCHNER**

on their recognition in the
Los Angeles Business Journal's
2026 list of **"Women of Influence:
Attorneys."**

stubbsalderton.com



CATHLEEN GREEN



CELINA KIRCHNER

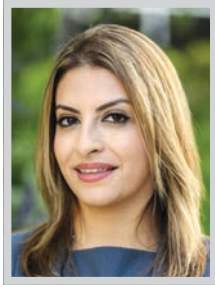
WOMEN OF INFLUENCE: ATTORNEYS

**MAHRU MADJIDI**

Managing Shareholder
Shegerian & Associates

Mahru Madjidi does not just litigate employment cases, she wins them at a scale few attorneys in the country can match. As the managing shareholder of Shegerian & Associates, she directs firm-wide litigation strategy, overseeing the firm's 65 attorneys, while remaining an active trial lawyer in the highest-stakes employment civil rights cases. In the past year, her leadership has produced verdicts and settlements exceeding \$230 million.

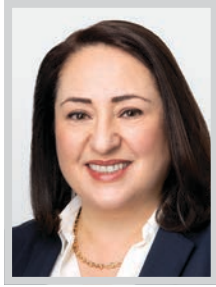
In 2025, Madjidi helped secure the largest age discrimination jury verdict in U.S. history, a \$103 million jury verdict in *Slagel v. Liberty Mutual Insurance*. Madjidi is one of the few, if not the only, attorney in our country with not one but two 9-figure single plaintiff employment verdicts.

**SAHAR MALEK**

Partner
Arias Sanguinetti

Sahar Malek is a trial counsel at Arias Sanguinetti Wang, where she represents plaintiffs in complex civil litigation with a focus on labor and employment, personal injury, and sexual abuse and assault cases. Over the course of her career, Malek has secured numerous six- and seven-figure results, including settlements of \$1.75 million, \$1.25 million, \$1 million and \$700,000. These outcomes demonstrate not only her impressive litigation skills but also her strategic approach to the cases she works on.

Malek draws on her personal experience to better understand and advocate for clients from marginalized and underrepresented communities. She has overcome the challenges of navigating the legal profession as a minority attorney and has distinguished herself through resilience and commitment to her clients.

**MARINA MANOUKIAN**

Member
Clark Hill PLC

Marina Manoukian stands out as a lawyer of distinction not only for the breadth of her practice, but also for the depth of her impact on the lives of her clients and the development of the law itself. For more than three decades, she has built a career defined by intellectual rigor, courtroom skill, and an unwavering commitment to those she represents, whether they are businesses navigating complex disputes or individuals facing personal and consequential challenges.

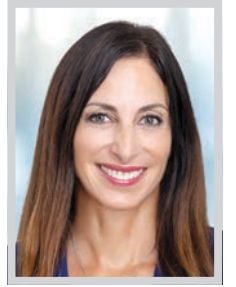
Manoukian represents businesses, property owners, contractors, and suppliers in high-stakes disputes involving contracts, real estate ownership, construction defects, and mechanic's liens. These matters demand precision, strategic thinking, and a deep understanding of both legal doctrine and industry realities.

**MARIE MAURICE**

Director
Ivie McNeill Wyatt Purcell
& Diggs, APLC

Since Marie Maurice was admitted to the California State Bar in December of 2008, she has been committed to being an active member of her community, a mentor to all and an advocate for her clients, peers, and youth. Individual accolades have never interested Maurice; she is more concerned with the legacy she leaves behind and those she has mentored and helped to get to where they are today.

Maurice leads by example, not by accolades or recognition. She has been planned and executed multiple conferences with the focus of uniting Black attorneys across California to expand their network and offer guidance and encouragement in their careers. She even served as scholarship chair for the National Association of Minority and Women Owned Law Firms from 2021-2024.

**TORREY McCLARY**

Partner
Ropes & Gray

Torrey McClary has structured and negotiated some of the most prominent and complex health system deals in California and across the country, guiding organizations on key strategic, legal and operational decisions. Her practice focuses on transformational projects for California and western region clients while maintaining a robust national presence. She advises academic medical centers, nonprofit hospitals, and health systems through highly-regulated, mergers, consolidations, affiliations and other innovative transactions.

A founding partner of Ropes & Gray's Los Angeles office, which opened in 2022, McClary has demonstrated strong leadership and entrepreneurial vision. She has grown the firm's top-tier health care platform and built a talented legal team to serve clients on critical legal issues.

WSHB proudly congratulates our Partner

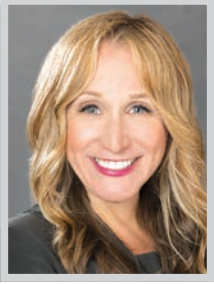
Melissa Saracyan

for being recognized as a
2026 Woman of Influence: Attorney
by the **Los Angeles Business Journal**.

We celebrate Melissa's leadership, dedication, and the positive impact she makes in our firm and community.



WOMEN OF INFLUENCE: ATTORNEYS

**DEBRA ELLWOOD MEPPEN**

National Chair, Employment Law Practice Group; Chair, Women's Initiative; Ventura County Co-Managing Partner; Co-Chair, Leadership Equality and Diversity Program
Gordon Rees Scully Mansukhani, LLP

Debra Ellwood Meppen is a litigation partner with 30 years of practice and 24 years at GRSM, where she serves as chair of the national Employment Litigation Practice Group and leads the firm's Women's Initiative. Widely regarded as one of Hollywood's most trusted legal advisors, she is the first call for producers, studio executives, talent, and management teams facing high-stakes employment disputes that threaten major film releases, concert tours, and reputations.

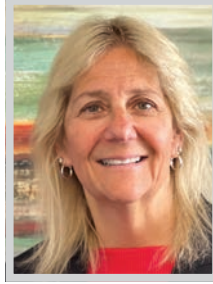
Meppen has overcome the unique challenge of navigating explosive matters in an industry where timing, confidentiality, and relationships are paramount.

**FELICIA R. MEYERS**

Founding Partner
Meyer, Olson, Lowy & Meyers, LLP

Felicia R. Meyers is a partner at Meyer, Olson, Lowy & Meyers, LLP. The law firm attracted a lot of attention when it launched as California's only female-established firm. Since then, the firm's record in court has garnered even more public interest. This has attracted many high-profile clients in the entertainment, business and sports industries. Meyers primarily serves high-profile clients throughout the State of California on matters related to high-asset divorce and custody.

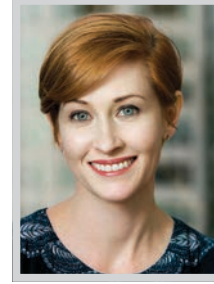
Meyers started her career practicing civil litigation, and she has exclusively practiced family law for over 22 years. She is a dynamic litigator who is at her best when she is battling it out for her clients in the courtroom. Her extensive litigation experience provides a distinct advantage in representing clients with complex issues.

**JANICE L. MILLER**

Managing Partner
Miller Haga Law Group, LLP

Janice L. Miller is the managing partner of Miller Haga and is a highly-recognized legal advisor with over 25 years of experience as an innovative general counsel. She represents the firm's clients in business transactions, real estate leasing, entertainment, intellectual property, licensing, and hospitality. The firm's clients have come to rely on Miller's insightful dispute resolution strategies as a preventive measure to avoid litigation.

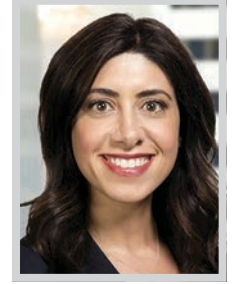
Miller is a noted speaker and panelist at conferences relating to location-based entertainment venues, real estate and leasing, corporate governance, intellectual property and licensing, and emerging areas of the law. Prior to entering private practice, Miller was NBCUniversal's Vice President of Business Affairs for Universal Studios Hollywood and CityWalk.

**VIRGINIA MILSTEAD**

Partner
Skadden, Arps, Slate, Meagher & Flom LLP

Virginia Milstead, a partner in Skadden's Los Angeles Litigation Group, is regularly sought after for her broad commercial practice, where she represents US and international clients in both state and federal courts, with a particular emphasis on securities class actions, shareholder derivative and M&A litigation. She is revered for developing shrewd, innovative arguments based on her knowledge of the law and thorough analysis of the matters in which she is involved, as well as her remarkable track record at obtaining early-stage dismissals for her clients.

One client told Chambers USA that "Virginia was super impressive in her ability to very quickly understand complex issues from a standing start."

**KIANA MORADI**

Co-Founder; Managing Partner
Moradi Neuffer LLP

Kiana Moradi has earned a reputation as one of California's most trusted advocates in prominent family law matters, combining business sophistication with deeply personal insight. As managing partner and co-founder of Moradi Neuffer Family Law Attorneys, she represents senior executives, founders, entrepreneurs, and their spouses in complex divorce and contested custody cases, while also guiding clients through family formation matters such as surrogacy.

Moradi began her career as a business litigator at Reed Smith LLP. That experience gave her fluency in complex financial structures, which she now applies to marital estate divisions involving founders' equity, stock options, carried interest, partnership interests, real estate portfolios, and intellectual property rights.

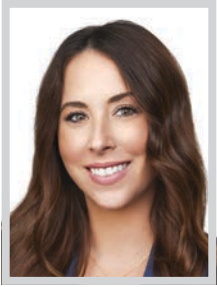
Barnes & Thornburg**Lilit Asadourian & Kristen Richer****2026 Women of Influence**

Bravo to **Lilit Asadourian** and **Kristen Richer** on being named to the *Los Angeles Business Journal's* 2026 Women of Influence list. Their leadership, advocacy and dedication to clients exemplify what it means to shape the future of law in Los Angeles.

btlaw.com



WOMEN OF INFLUENCE: ATTORNEYS

**LINDSEY MUNYER**

Partner
Keystone Law Group, P.C.

As a formidable litigator, partner and founding member of Keystone Law Group's Executive Committee, Lindsey F. Munyer has been a driving force behind Keystone's propulsion to California's largest and most prominent probate litigation firm, representing high-profile clients and securing trial rulings with damages that are rarely awarded in cases that often involve complex creditor claims and intricate tax issues.

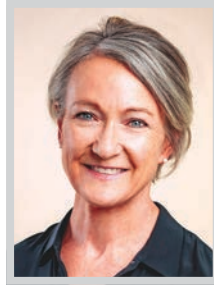
A recognized and sought-after thought leader in probate litigation, Munyer is both a certified specialist in Estate Planning, Trust & Probate Law and holds her LLM in taxation, having worked with the IRS Office of Chief Counsel early in her career, and her influence extends beyond the courtroom to speaking, writing, and teaching engagements.

**JENNIFER NASSIRI**

Partner
Sheppard

Jennifer Nassiri is a nationally recognized bankruptcy attorney who counsels clients across multiple industries in connection with pre-bankruptcy planning, restructurings, and liquidations, both in Chapter 11 and out of court. Throughout her career, Nassiri has counseled Chapter 11 debtors, lenders, special servicers, property owners, asset purchasers, insiders, and Chapter 11 trustees, including liquidating trustees in a broad spectrum of complex issues in bankruptcy – including one of the largest bankruptcies in the US, where she helped Seadrill Partners restructure more than \$2.5 billion of funded indebtedness.

Recently, Nassiri served as lead debtor's counsel for Village Roadshow Entertainment Group and its 33 affiliates in one of 2025's most closely watched entertainment bankruptcies.

**DALE NELSON**

Partner
Donaldson Callif Perez LLP

Dale Nelson spent over 25 years as in-house intellectual property counsel at Warner Bros. before joining Donaldson Callif Perez to champion the free speech rights of artists and independent filmmakers. Specializing in issues related to copyrights, trademarks, personal rights, and clearance, she brings a blend of litigation and in-house counsel experience to her practice, helping filmmakers, authors, and artists express their art and stories in a truthful, powerful way.

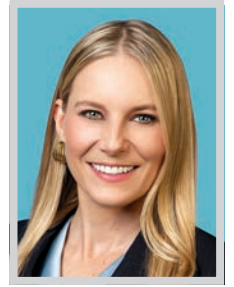
Nelson has a broad and deep understanding of copyright law and loves the challenges her clients bring with their unusual projects which, at first glance, may seem to require consents and permissions but, in reality, do not. Many of Nelson's clients' projects have premiered at prestigious film festivals including Sundance, Toronto International Film Festival, and SXSW.

**KRISTEN NESBIT**

Co-Regional Managing Partner
Fisher Phillips LLP

A powerhouse lawyer with a record for successfully handling high-stakes matters, Kristen Nesbit is a trusted partner to her clients, including Fortune 500 companies, billion-dollar corporations and public entities. She has handled numerous single-plaintiff and class action lawsuits, seeing them through to verdict. Her triumphs in the labor and employment arena, combined with her active community involvement, prestigious award recognitions and commitment to championing diversity and equality make Nesbit a legal industry leader.

Committed to helping diverse business owners succeed, Nesbit regularly assists Disability-Owned Business Enterprise, Minority Business Enterprise, Women Business Enterprise, and Veteran Business Enterprise employers.

**CASSIE D. PALMER**

Partner
Kendall Brill & Kelly LLP

A former senior federal prosecutor and section chief with more than 15 years of litigation experience, KBK partner Cassie D. Palmer brings trial acumen, seasoned judgment, and strategic insight to high-stakes disputes. For more than a decade, she served in the US Attorney's Office for the Central District of California, where she earned a national reputation for success in landmark corruption, securities-fraud, and civil-rights prosecutions.

As a trusted advocate for major corporations, institutions, executives, and high-profile individuals, Palmer helps clients navigate sensitive government investigations, complex commercial disputes, and reputationally significant litigation. Palmer serves as lead counsel defending Los Angeles County in an ongoing pending federal civil rights class action.

Los Angeles Business Journal

2026 Women of Influence

**Catherine A. Veeneman**

Partner, Employment

cveeneman@ecjlaw.com | 310.281.6381

**Taylor A. Carico**

Partner, Estate Planning, Probate & Trusts

tcarico@ecjlaw.com | 424.218.3935

ERVIN COHEN & JESSUP

ecjlaw.com | 310.273.6333

WOMEN OF INFLUENCE: ATTORNEYS

**RADHA PATHAK**

Partner
Stris & Maher LLP

Rachana (Radha) Pathak co-leads Stris & Maher's award-winning Pension Litigation and Healthcare Litigation Practices. Widely recognized as one of the country's leading plaintiff-side pension and healthcare litigators, Pathak is one of the foremost authorities on the laws governing private-sector retirement and welfare benefit plans. She is a sought-after speaker and author on these complex topics, particularly regarding the Employee Retirement Income Security Act of 1974 and the Affordable Care Act.

Pathak is also a prominent appellate advocate. Over the past 18 months, she has compiled an exceptional record on appeal—arguing seven federal cases across the Second, Fifth, Sixth, Ninth, and Eleventh Circuits and prevailing in every case decided to date.

**STACY D. PHILLIPS**

Partner, Matrimonial & Family Law
Practice Group
Blank Rome LLP

Stacy D. Phillips is widely regarded as one of the most influential and accomplished family law attorneys in the United States. For more than four decades, she has shaped the practice of high-net-worth and high-profile family law, guiding clients through some of the most complex, emotionally charged, and publicly scrutinized moments of their lives. Her career is distinguished not only by exceptional legal results, but by her leadership, legislative impact, and unwavering commitment to advancing the profession and the community it serves.

Phillips specializes in sophisticated divorce and custody matters involving extraordinary assets, intricate financial structures, public figures, and unique jurisdictional and reputational considerations.

**ALISON PLESSMAN**

Partner
Hueston Hennigan LLP

Alison Plessman leads or co-leads many of Hueston Hennigan's highest profile matters and has cemented a reputation as one of the state's top litigators. Her practice ranges from multibillion-dollar wildland fire and debris flow litigation to high-stakes copyright infringement, contract, defamation, employment, securities fraud and trade secrets disputes. She also advises clients on their most sensitive and confidential internal matters.

Plessman is co-leading the team defending PacifiCorp in numerous high-stakes lawsuits stemming from the September 2020 "Labor Day Fires" that burned over 500,000 acres across eight counties. Plessman and her team have achieved multiple pre-trial and trial wins and obtained favorable pre-trial resolutions with nearly 2,000 plaintiffs to date.

**JENNIFER POST**

Managing Partner, Los Angeles
Thompson Coburn LLP

Jennifer Post is the managing partner of Thompson Coburn LLP's Los Angeles office and co-chair of the firm's Emerging Companies practice. For more than three decades, she has advised lenders, investors, and high-growth companies in all stages of corporate growth on equity and debt financings, M&A, equity compensation and governance.

Post's practice sits at the intersection of capital and innovation. She represents premier venture debt lenders, private credit funds, and growth-stage companies in transactions that require sophisticated structuring, disciplined risk assessment, and commercial precision. Her work spans technology, life sciences, consumer brands, fintech, AI-enabled platforms, and regulated industries.

**CHRISTA RAMEY**

Of-Counsel
ACTS LAW

Christa Ramey is vice president of Consumer Attorneys of Los Angeles, and will be president of the association in 2027. Ramey is also a member of American Board of Trial Advocates. She is on the Los Angeles Chapter's Executive Committee and is a representative for the ABOTA National Board. As an experienced trial attorney, Ramey represents claims involving children who have been the victims of school bullying and sex abuse.

Ramey also believes that charity and service are essential in her life and law practice. Ramey is a member of Rotary International. Rotary's motto is service above self. This motto is a guide to both charity and the practice of law. In 2022, Christa and John Ramey received CAL-ABOTA's Community Service Award, recognizing their service to others.

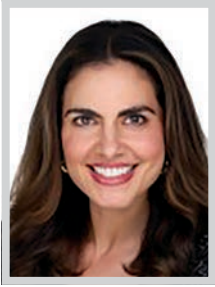


We proudly congratulate
Jessica Babrick
on her selection to the
Los Angeles Business Journal's
2026 "Women of Influence:
Attorneys."

weinstocklaw.com



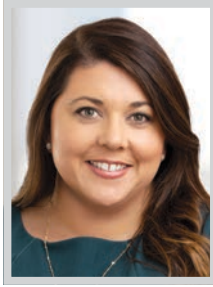
WOMEN OF INFLUENCE: ATTORNEYS

**YASMIN RESTREPO**

Partner
Briones PC

Yasmin Restrepo is a seasoned litigation attorney and partner at Briones PC with more than fourteen years of experience advising clients in complex commercial, civil, and international matters. Her career reflects a rare combination of top-tier law firm training, leadership in high-stakes litigation, and long-term service as outside general counsel to a confidential international nonprofit operating within a global litigation framework.

In November 2025, Restrepo joined Briones PC as a partner, where she continues to lead sophisticated litigation matters and counsel clients through complex legal challenges. Her depth of experience across multiple top-tier firms and sectors allows her to approach disputes with both rigor and practicality. She has published legal commentary on litigation risk and international policy issues.

**KRISTEN RICHER**

Partner; Litigation Department Chair-Elect
Barnes & Thornburg

Kristen L. Richer is a partner in Barnes & Thornburg's Los Angeles office and is an accomplished product liability and class action defense attorney. In March 2026, the firm named her chair-elect of its 275-lawyer Litigation Department — a role she will assume in November, making her the first Los Angeles-based attorney to lead the practice.

Richer's practice focuses on defending the manufacturers, distributors, and retailers of major pharmaceutical, medical device, consumer health and beauty, and retail products across the full spectrum of consumer litigation. She has represented clients in some of the nation's most significant multi-district litigations and coordinated proceedings, serving in formal leadership roles that few attorneys achieve.

**LYSSA ROBERTS**

Attorney
PANISH | SHEA | RAVIPUDI LLP

Lyssa A. Roberts is an attorney with Panish | Shea | Ravipudi LLP who focuses her practice on catastrophic personal injury and wrongful death, as well as dangerous conditions of public and private property. Licensed in California and Nevada, she has extensive experience litigating single plaintiff lawsuits as well as cases involving thousands of claimants. She is deeply committed to the protection of the rights and interests of individuals who have been harmed by the negligent acts of others and a tireless advocate for her clients.

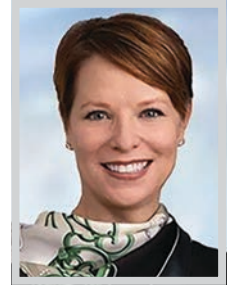
Over her 22 year career, Roberts has secured hundreds of millions of dollars in verdicts and settlements on behalf of plaintiffs. Currently, Roberts represents hundreds of plaintiffs in the 2025 Eaton Fire litigation against Southern California Edison.

**CANDICE ROGERS**

Partner
Hahn & Hahn LLP

Candice Rogers is a partner in Hahn & Hahn's litigation practice group and practices primarily in the area of family law including premarital agreements, postnuptial agreements, dissolution of marriage, property division, custody and support. Rogers has settled and litigated numerous dissolution of marriage actions involving highly contested custody disputes, and complicated income and property issues.

Rogers has also drafted and negotiated cohabitation agreements for high profile and high net worth clients, each with unique business and income structures. Clients count on Rogers' ability to understand complex legal situations and develop creative strategies to achieve a successful resolution.

**MELANIE RONEN**

Partner; Chair, Employment
Stradley Ronon Stevens
& Young, LLP

As partner and chair of Stradley Ronon's Employment Practice and a driving force behind the firm's West Coast expansion, Melanie Ronen exemplifies inspirational leadership in both the legal profession and her broader California community. She is recognized for her strategic vision, her dedication to mentoring the next generation of attorneys, and her profound community engagement—qualities that have established her as a trusted leader within the firm and a respected advisor to public and private organizations throughout the state.

Over the past two years, Ronen has led high-stakes litigation for both public and private sector clients across California, delivering strong results in wage and hour disputes, discrimination claims and class actions.

WILLKIE CONGRATULATES OUR PARTNERS

**Tammy Godley and
Kathy Wunderli***Los Angeles Business Journal's*
Women of Influence: Attorneys**WILLKIE**

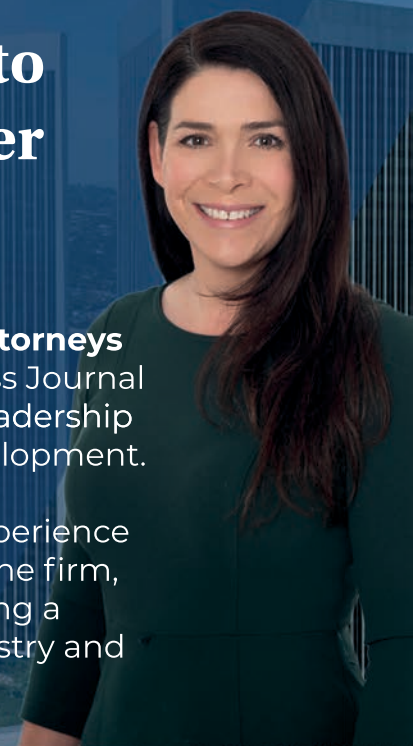
1,300 LAWYERS | 16 OFFICES | 6 COUNTRIES

Attorney Advertisement

**Congratulations to
Cox Castle Partner
Adriana Vesci**

on being named to the
2026 Women of Influence: Attorneys
list by the Los Angeles Business Journal
recognizing her exceptional leadership
in real estate finance and development.

With more than 20 years of experience
and strong leadership within the firm,
we celebrate Adriana for making a
lasting impact across the industry and
her community.

**140+**

ATTORNEYS

and professionals dedicated
to real estate and beyond**55+**

YEARS

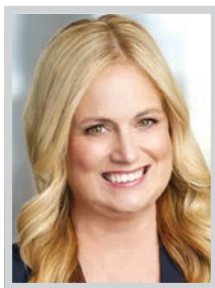
serving the real estate
community**100+**

AWARDS

firm, practice group, and
individual awards for excellence

LOS ANGELES | ORANGE COUNTY | SAN DIEGO | SAN FRANCISCO

WOMEN OF INFLUENCE: ATTORNEYS

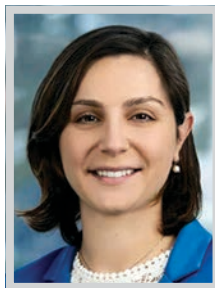


JENNIFER RUSSELL

Partner
Mendez & Sanchez

Jennifer Russell is a partner at Mendez & Sanchez and a highly respected plaintiff-side trial attorney known for delivering exceptional results in complex personal injury and wrongful death matters. Over the course of her career, Russell has tried nearly 50 cases throughout California, earning a reputation as an impressive courtroom advocate with a remarkable record of success. In the past several years alone, Russell has secured multiple multimillion-dollar outcomes for her clients.

In *Edward Hernandez v. Carlos Palomares, CCC America Inc., dba BNB Global*, Russell obtained a \$4,974,000 jury verdict after just 40 minutes of deliberation, with the total recovery exceeding \$5.5 million, including costs and interest. She also achieved an \$8,000,000 settlement in a hard-fought traumatic brain injury case.

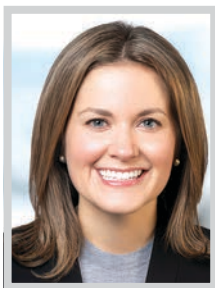


MELISSA SARACYAN

Partner
Wood, Smith, Henning & Berman, LLP

Melissa Saracyan has established herself as one of Los Angeles' most compelling rising litigation leaders, combining sharp legal instinct with a practical, client-focused approach that consistently delivers results in high-stakes matters.

As a partner in the Los Angeles office of Wood Smith Henning & Berman, Saracyan handles a wide range of complex civil litigation, including construction defect, catastrophic injury, landlord-tenant habitability, and other high-exposure tort matters, as well as business and federal litigation. She is known for stepping into challenging cases and quickly distilling complex issues into clear, strategic paths forward, earning the trust of clients navigating technical and high-risk disputes.



LAURIE SELKOWITZ

Partner
Greenberg Glusker LLP

Over the past 16 years, Laurie Selkowitz has built a distinguished practice at the intersection of technology, privacy, media, intellectual property, and emerging technologies. As a partner at Greenberg Glusker, she advises clients ranging from startups to Fortune 500 companies on some of the most sophisticated and rapidly evolving issues facing businesses today, including artificial intelligence, data privacy, digital advertising, cloud technology, and content distribution.

Selkowitz recently achieved one of the most significant milestones of her career by successfully transitioning her practice to Greenberg Glusker. She has distinguished herself by helping clients solve cutting-edge legal and business issues where there is often little precedent.



LARA SHORTZ

Office Managing Partner; Employment
Advice, Counsel & Executive Disputes
Chair
Michelman Robinson

Lara Shortz has built a career defined not only by legal excellence, but by her work shaping Michelman Robinson, where she serves as the Los Angeles Office managing partner. Shortz stands out as an influential leader.

Shortz's legal practice alone places her among the most trusted advisors to management in California. She counsels executives and organizations on their most sensitive and complex workplace matters, including executive transitions, compensation structures, large-scale workforce restructurings, and high-risk litigation. Over the past year, she has led companies through multimillion-dollar severance negotiations, WARN Act compliance, and critical employment decisions that carry significant operational and reputational stakes.



ALICE CHEN SMITH

Managing Partner
Yoka | Smith, LLP

Alice Chen Smith is the managing partner of Yoka | Smith and an experienced trial lawyer who has successfully tried many cases to verdict and obtained summary judgment wins. Her primary focus is litigating catastrophic personal injury cases, products liability and business litigation matters. She practices throughout the State of California in trial and appellate courts.

Smith is president of the Association of Southern California Defense Counsel this year. She serves on the board of the Association of Business Trial Lawyers and will be its president in 2027, and she also serves on the Los Angeles Chapter of American Board of Trial Advocates as its membership chair. She is also a member of the Southern California Chinese Lawyers Association.

Shook congratulates **Karyn Ihara** for being named among *LABJ Women of Influence: Attorneys*

ATLANTA | BOSTON | CHICAGO | DENVER | HARTFORD | HOUSTON | JERSEY CITY
KANSAS CITY | **LOS ANGELES** | MIAMI | NEW YORK | ORANGE COUNTY | PHILADELPHIA
SAN FRANCISCO | SEATTLE | ST. LOUIS | TAMPA | WASHINGTON, D.C.

THE CHOICE OF A LAWYER IS AN IMPORTANT DECISION AND SHOULD NOT BE BASED SOLELY UPON ADVERTISEMENTS.

WE CHAMPION THE VISIONARIES. | SHB | SHB.COM

SHOOK
HARDY & BACON

WOMEN OF INFLUENCE: ATTORNEYS

**AERIN SNOW**

Partner
Sheppard

Aerin Snow is a partner in Sheppard's Corporate practice, and has established a reputation as a leader in the field of media and entertainment M&A. Snow has become the go-to deal counsel, primarily in the media and entertainment space, for M&A, capital fundraising, forming new ventures, corporate restructuring or the purchase and sale of intellectual property.

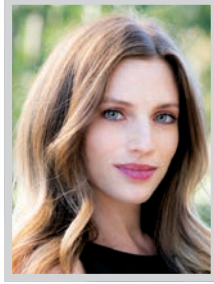
Recently, Snow served as the lead corporate M&A counsel for Village Roadshow Entertainment Group and its 33 affiliates. Upon entering bankruptcy, Village Roadshow secured a \$12.7 million debtor-in-possession facility from its pre-petition lenders. The firm structured a competitive sale process for key assets anchored by a revised stalking horse bid of \$417.5 million for the film library, ensuring a strong floor for creditor recoveries.

**SAMANTHA F. SPECTOR**

Founding Partner
Spector Law,
A Professional Law Corporation

Samantha F. Spector is an internationally recognized California family law attorney and the founder of Spector Law, A Professional Law Corporation, a boutique firm established in 2012. She represents high-net-worth and high-profile clients in complex parentage cases throughout California, including Los Angeles, Orange County, San Diego, Santa Barbara, Silicon Valley, and San Francisco.

For over two decades, Spector has represented prominent figures in entertainment, sports, and business as a leading high-asset divorce lawyer. She concentrates her practice on high-asset marital dissolutions, legal separations, domestic partnerships, domestic violence restraining orders, parentage actions, and complex child custody, visitation, and support matters.

**CASEY SYPEK**

Partner
Miller Barondess, LLP

Casey Sypek is a partner at Miller Barondess and an experienced trial lawyer who represents public and private entities in state and federal courts. She has a strong track record handling complex, high-impact matters, securing successful outcomes for clients across a broad range of disputes, including commercial litigation, breach of contract, fraud, employment, intellectual property, entertainment, false advertising, and government-related matters.

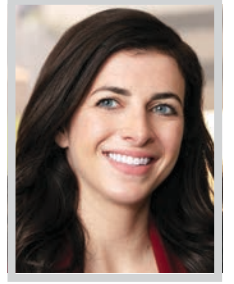
As outside counsel to the County of Los Angeles, Sypek manages some of the County's most sensitive and complex cases, frequently involving significant public policy issues and substantial financial exposure. Sypek currently represents LA County in large-scale litigation, including the defense of mass tort claims arising from the January 2025 wildfires.

**SARAH TREMER**

Principal
Polsinelli

Sarah Tremer is an emerging leader in complex civil litigation, recognized for her strategic defense work in high-stakes product liability and mass tort cases. As a principal at Polsinelli, she represents clients in high-exposure litigation across the country, with significant experience defending Fortune 500 pharmaceutical and medical device companies in both federal and state courts. She is currently serving as a lead partner representing a major manufacturer in statewide class action litigation involving complex and novel discrimination and harassment claims.

Tremer is licensed in not only California, but also in New Jersey and New York. For more than a decade, Tremer has handled single-plaintiff cases as well as multi-district litigation and multicounty litigation.

**HELENA TSEREGOUNIS**

Partner
Latham & Watkins LLP

Helena Tseregounis is a standout partner in Latham & Watkins' Restructuring & Special Situations Practice based in Los Angeles, representing clients in all aspects of US and cross-border corporate reorganizations and restructurings. She also serves as Regional Department vice chair of Latham's Finance Department in California.

Tseregounis guides companies, creditors, buyers, creditors' committees, and other interested parties across the insolvency life cycle, including chapter 11 bankruptcy proceedings, distressed asset acquisitions, bankruptcy-related litigation, and out-of-court restructurings. She forges trusted relationships with her high-profile clients and helps them navigate their most business-critical issues with a calm, methodological approach. She deftly guides clients in complex financial situations to successful outcomes.

GRSM PROUDLY CONGRATULATES

Debra Ellwood Meppen

on her selection to
Los Angeles Business Journal's
2026 Women of Influence.

This recognition is a testament to her decades of legal excellence, commitment to mentorship, and the confidence she inspires in clients and colleagues alike.

GRSM50
GORDON REES SCULLY MANSUKHANI
YOUR 50 STATE LAW FIRM™

As the only law firm with offices and attorneys in all 50 states, we provide full-service representation seamlessly across the U.S.



grsm.com

RAK
Russ August Kabat

310.826.7474
www.raklaw.com

LOS ANGELES BUSINESS JOURNAL

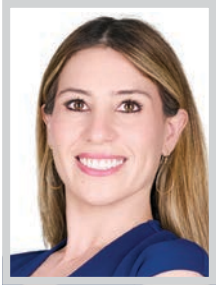
**WOMEN OF
INFLUENCE
ATTORNEYS**

2026

CONGRATULATIONS
IRENE Y. LEE



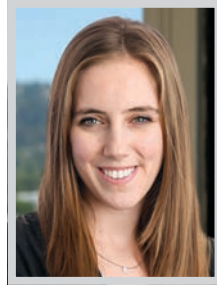
WOMEN OF INFLUENCE: ATTORNEYS



SOFIA NUÑO UNÁNUE
Attorney
Briones PC

Sofia Nuño Unánue is an accomplished litigation attorney whose career reflects academic excellence, public service, and high-impact private practice experience. She is currently an attorney at Briones PC, where she represents clients in complex, high-stakes matters nationwide. Her practice is informed by a strong foundation in litigation, public policy, and criminal procedure, as well as a demonstrated commitment to thoughtful, strategic advocacy.

Prior to joining Briones PC, Unánue practiced as a litigation associate at Mintz, where she was entrusted with significant responsibilities on sophisticated matters. During her tenure, she worked closely with senior leadership and handled high-stakes litigation, earning recognition for her analytical rigor, writing ability, and professionalism.



CATHERINE A. VEENEMAN
Partner
Ervin Jessup Cohen LLP

Cate Veeneman is a partner in the Litigation Department at Ervin Jessup Cohen. She is a dedicated advocate for California employers, known for her ability to navigate complex litigation while maintaining a sharp focus on minimizing institutional risk. Representing a diverse range of small and medium-sized enterprises across the hospitality, retail, media, and construction sectors, Veeneman defends clients against the full spectrum of employment claims—from individual discrimination and wrongful termination to high-stakes wage and hour disputes.

Veeneman expertise extends to the defense of complex class action and PAGA claims, where she consistently secures favorable outcomes in some of the state's most challenging legal environments.



ADRIANA VESCI
Partner
Cox, Castle & Nicholson

Adriana Vesce is a seasoned attorney with over 20 years of experience in real estate finance and development. Throughout her career, she has built a reputation as a trusted advisor to developers and institutional investment managers navigating complex and high-stakes real estate transactions. Vesce is known for getting lenders, investors, and developers workable results by using the skills she has gained from negotiating from every side of the table. Her collaborative approach, paired with her sharp legal mind, allows her to anticipate client needs and proactively guide them through every stage of the transaction process.

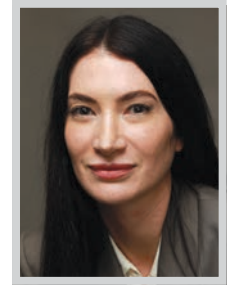
Vesce's expertise spans a broad range of real estate finance transaction structures.



JENNIE WANG VonCANNON
Partner
Crowell & Moring LLP

Jennie Wang VonCannon is a highly accomplished trial lawyer and trusted advisor with over 22 years of experience, more than half spent as a federal prosecutor at the US Attorney's Office for the Central District of California. In private practice, she excels in complex corporate defense, white collar investigations, and regulatory enforcement.

VonCannon is an immigrant from Brazil whose parents worked graveyard shifts sorting mail at the US Post Office and as a short-order cook at a downtown Los Angeles diner. English was her fourth language, and she is the first in her family to attend law school. She has achieved the American Dream and serves as a powerful role model to young lawyers facing their own challenges.



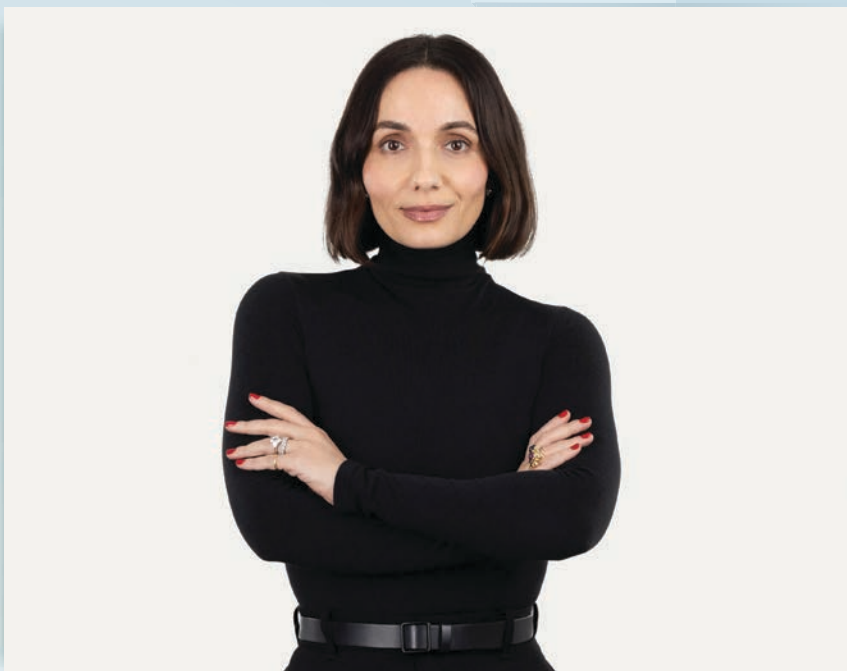
NATALIE WEATHERFORD
Partner
Taylor & Ring

Natalie Weatherford has devoted her career to championing victims of sexual abuse and taking on the powerful institutions that try to silence them in the process. Her work with children and adult survivors has led to record-breaking verdicts and settlements against individuals, large corporations, and school districts and administrators – including more than \$100 million in recoveries in the past 24 months alone.

In recognition of her impactful work to obtain justice and drive greater accountability for perpetrators, Weatherford was named "Trial Lawyer of the Year" in 2024 by the Consumer Attorneys Association of Los Angeles. Among her landmark verdicts was a \$102.5 million verdict on behalf of two former students who were sexually abused while attending Dartmouth Middle School in San Jose.

ELKINS KALT WEINTRAUB REUBEN GARTSIDE
LLP PROUDLY CONGRATULATES

Our partner, **Marina Beck**



Los Angeles Business Journal's
2026 Women of Influence: Attorneys



WOMEN OF INFLUENCE: ATTORNEYS

**SUSAN WILLIAMS**

Chair, Entertainment and Media, Finance
Paul Hastings LLP

Widely recognized as one of the entertainment industry's top dealmakers, Susan Williams represents elite production and distribution companies, major commercial financial institutions, private credit and private equity funds and high net worth individuals in their highest profile and most complex matters. Her steady ranking in the industry reflects her sustained market leadership and work at the cutting edge of the global entertainment industry.

At the forefront of the industry's developments, Williams' practice includes the most sophisticated entertainment-related capital markets transactions, as well as complex licensing and distribution arrangements for motion pictures, television, music and new media. Well-known domestic and international clients regularly seek her guidance.

**KATHY WUNDERLI**

Partner; West Coast Co-Chair,
Private Wealth
Willkie Farr & Gallagher LLP

Kathy Wunderli, a veteran attorney in the wealth management space, serves as West Coast co-chair of Willkie's Private Wealth Group. As practice leader, she fosters a strong culture of collaboration and mentorship across Willkie's three West Coast offices.

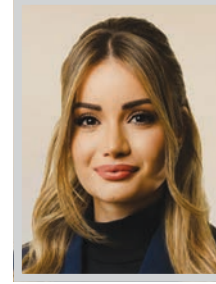
Wunderli is trusted to represent high-net-worth families and individuals, including in the entertainment industry, closely held business owners, business managers, accountants, and non-profits on a wide range of complex tax matters, including estate planning, probate and trust administration, and pre-marital, post-marital, and transmutation agreements. Her sophisticated estate planning practice includes advising trustees and personal representatives in the administration of trusts and estates.

**STEPHANIE YONEKURA**

Global Head, Investigations,
White Collar, and Fraud
Hogan Lovells

Stephanie Yonekura is one of the most trusted names in white collar defense and corporate investigations today. As the global head of Hogan Lovells' Investigations, White Collar, and Fraud practice, she leads a team of more than 150 lawyers across 20 jurisdictions, guiding global corporations through some of their most complex and sensitive challenges. A former Acting US Attorney for the Central District of California, Yonekura brings unmatched credibility, deep trial experience, and a steady hand to crisis moments – whether in the courtroom, the boardroom, or before regulators.

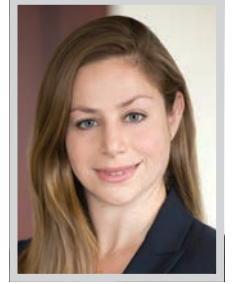
Her combination of technical excellence, real-world insight, and authentic leadership make her a force in her field and a role model in the profession.

**ROSIE ZILIFYAN**

Shareholder
Shegerian & Associates

Rosie Zilifyan has established herself as a formidable advocate in employment law, representing plaintiffs in complex matters involving wrongful termination, workplace discrimination, harassment, retaliation, and whistleblower claims. Since Shegerian & Associates expanded its practice to include sexual assault cases, Zilifyan has assumed leadership of the majority of these matters, managing all aspects from case strategy to trial. Her oversight has ensured that survivors of sexual assault receive not only robust legal representation but also compassionate guidance throughout the litigation process.

Zilifyan has achieved remarkable results for her clients, securing over \$70 million in verdicts and settlements. Highlights include a \$5.4 million whistleblower retaliation jury verdict in Galvan v. UPS.

**YARDENA ZWANG-WEISSMAN**

Partner
Morgan, Lewis & Bockius LLP

Morgan Lewis partner Yarden Zwang-Weissman is an eminent litigator, trial lawyer and crisis strategist whose leadership and wins in complex, high-profile disputes exemplify outstanding achievement, organizational leadership, and sustained community impact.

A Los Angeles native, Zwang-Weissman has led and continues to lead some of the most high-profile matters across the country, with a focus on California and Los Angeles. She represents clients facing complex and high-stakes issues in environmental, mass tort, and product liability litigation across industries, including manufacturing and supply, energy, technology, life sciences, consumer products, and pharmaceutical and medical devices.

ANDRADE
GONZALEZ
LLP

Congratulations

Maite Colón

Senior Counsel

Named to *Los Angeles Business Journal's*
Women of Influence:
Attorneys



213.986.3590
2020 E 7th Street, Los Angeles, CA 90021
andradefirm.com



Employee issues
keeping you up at night?

We'll handle it.

Innovative | Experienced | Responsive



LightGabler congratulates
our partner, **Chandra Beaton**
for being a 2026
Women of Influence Honoree.

LightGabler LLP
We Make Business Work[®]

EMPLOYMENT COUNSEL & LITIGATION | INTELLECTUAL PROPERTY

info@lightgablerlaw.com | LightGablerLaw.com | 805.248.7208

WOMEN OF INFLUENCE: ATTORNEYS

Diversity Report Shows Historic Highs for New Attorneys



The State Bar's most recent Diversity Report Card, published in August of last year, found that while California's legal profession continues to become more representative of the state's population—with women and people of color both representing 57 percent of newly admitted attorneys, an all-time high for representation of both groups—the attorney workforce still does not reflect the state's rich diversity.

"The Diversity Report shows that while California's attorney population is gradually becoming more reflective of the state's rich diversity, the pace and distribution of progress remain uneven," said Erika Doherty, deputy executive director. "It's encouraging that women of color once again make up the largest share of newly admitted attorneys. However, representation gaps persist, especially for Latino and Black attorneys. Achieving a legal profession that reflects the diversity of California's communities requires sustained action grounded in data. Enhancing access, fairness, and diversity in the legal profession is not merely aspirational—it is central to our public protection mission and essential to ensuring meaningful access to justice."

White attorneys are overrepresented in California's attorney population (64 percent) compared to their representation in the state's adult population (37 percent), while people of color are notably underrepresented in the attorney population (36 percent) compared to the state's adult population (63 percent). Latinos are the most underrepresented, constituting 37 percent of California's population but only 6 percent of California's active licensed attorneys.

Key trends among newly admitted attorneys include the following:

- Women and people of color both constituted 57 percent of attorneys newly admitted to the State Bar in 2024, marking an all-time high for representation of both groups. In 1990, men and women of color made up just 9 and 8 percent of newly admitted attorneys, respectively. By 2024, women of color accounted for 34 percent of newly admitted attorneys, while men of color made up 22 percent. Women of color now constitute the largest group of newly admitted attorneys, a trend that started in 2021.

- The proportion of Asians among newly admitted attorneys has more than tripled since 1990, while the percentage of those identifying as multiracial has more than quadrupled. Similarly, the representation of Latinos among newly admitted attorneys has nearly tripled.

- All nonwhite racial/ethnic groups have experienced increased representation among newly admitted attorneys since 2020, except for American Indian/Alaska Natives, whose rep-

resentation has remained the same, and Black/African Americans, who have experienced a slight decline.

- The recent uptick in racial/ethnic diversity among attorneys admitted since 2020 is predominantly led by women. Notably, the representation of Asian, Latino, and multiracial women has steadily increased, while Black women have seen a slight decline.

In 2024, there were approximately 196,000 active licensed attorneys in California. Key takeaways for the overall attorney population in 2024 include:

- Asian attorneys account for 16 percent of the state's population and 14 percent of all attorneys.
- Attorneys who identify as multiracial make up 8 percent of all attorneys, four times more than the share of multiracial adults statewide.
- Black adults are roughly 6 percent of California's population but only 3.5 percent of all attorneys.
- The share of attorneys who identify as Middle Eastern/North African (3 percent) and Native Hawaiian/Other Pacific Islanders (0.3 percent) is comparable to their representation among California's adult population.
- Looking beyond specific racial/ethnic categories, people of color account for 63 percent of the state's adult population yet just 36 percent of California's active attorneys.
- Women are half of California's adult population but just 45 percent of California attorneys.
- Just 1 percent of the attorney population identifies as nonbinary.
- Less than 1 percent of the attorney population identifies as transgender, comparable to recent estimates of the transgender adult population in California.
- The share of attorneys identifying as LGBTQIA+ is comparable to California's statewide LGBTQIA+ adult population at 9 percent.
- Attorneys with disabilities constitute just 6 percent of the profession, compared to 25 percent of California's adult population. Disability status includes individuals who report having at least one form of a disability that limits activities and self-care, including mobility issues, cognitive impairments, and vision and hearing impairments.
- The representation of veterans in the attorney population is 4.8 percent and is comparable to their representation in the state's population at 4.1 percent.

For more information, visit calbar.ca.gov.

THEY DON'T RUN THE COMPANY. THEY RUN THE DAY.

THE INDISPENSIBLES

LABJ LOS ANGELES BUSINESS JOURNAL

Behind every C-Suite leader are teams of people crucial to the company's success. Those teams have leaders within them - **THE INDISPENSIBLES.**

Those who lead customer relationships. Those who flag problems before they become a crisis. They drive innovation. They're the ones who guard your data, mentor new hires, and somehow know where everything is.

The Los Angeles Business Journal is shining a spotlight on these important individuals. This year, we're introducing **THE INDISPENSIBLES** — a new editorial product and special publication for the non-C-suite professionals who are essential to their organizations.

Nominations may come from leadership or from colleagues who believe their teammate deserves their moment.

Because in Los Angeles business, success is never a solo act.

NOMINATION DEADLINE MAY 29



NOMINATE TODAY