

IIDA

SOUTHERN
CALIFORNIA
chapter



38th Annual CALIBRE
Design Awards



2026

CALIBRE DESIGN AWARDS



SOUTHERN CALIFORNIA chapter



From the Publisher



JOSH SCHIMMELS
 Publisher & CEO
 LOS ANGELES BUSINESS JOURNAL

On behalf of the *Los Angeles Business Journal*, I am pleased to announce this new partnership with International Interior Design Association, Southern California (IIDA SoCal), in support of its 38th Annual Calibre Awards, highlighting excellence in commercial interior design.

The Business Journal serves a readership that is directly connected to the work being recognized. Our audience is made up of the business leaders, owners, executives, and decision-makers

who ultimately occupy, invest in, and shape the environments created by these award-winning design professionals. In many ways, they are the end users of this work.

The importance of thoughtfully designed commercial space extends well beyond aesthetics. Work environments play a critical role in shaping company culture, influencing productivity, attracting talent, and reflecting a firm's values to clients and stakeholders. As organizations across Southern California continue to evolve their workplaces, the intersection of design and business performance has never been more relevant.

This special section provides a meaningful platform to highlight the firms setting the standard for excellence in interior design, including showcasing the winning projects and all of the nominees, while also engaging the broader business community that benefits from and depends on their work.

Many thanks to the leaders and board members of IIDA SoCal for their partnership and engagement. We respect and admire your commitment to our Community of Business™.

Lastly, congratulations to all of this year's Calibre Awards nominees and winners for helping make our business community a more inspiring space where innovation thrives.

Best regards,

Josh Schimmels
 Publisher & CEO



From IIDA SoCal



ROBERT NORWOOD
 FIIDA — President



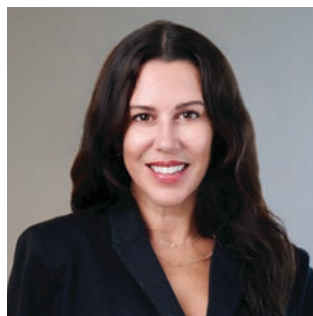
SONALY DUDHEKER
 Assoc. IIDA — President Elect



SARAH DEVINE
 IIDA — Immediate Past President
 & Calibre Co-Chair



KELSEY SEBASTIAN
 Ind. IIDA - VP Chapter Events
 & Calibre Co-Chair



SUSAN SUHAR
 IIDA - VP Chapter Events
 & Calibre Co-Chair

The International Interior Design Association Southern California Chapter recently hosted its 38th Annual Calibre Design Awards, celebrating the very best in commercial interior design and the collaborative spirit that continues to drive innovation across the industry.

As the chapter's largest and most anticipated event of the year, the evening brought together designers, architects, and industry partners to honor exceptional work while recognizing the teamwork essential to delivering outstanding design solutions. This year's celebration took place at the iconic InterContinental Los Angeles Downtown, providing a fitting backdrop for an evening of inspiration, recognition, and connection.

The Calibre Design Awards feature 12 distinct categories, highlighting excellence across a broad spectrum of project types, along with the highly anticipated People's Choice Award, which invites the design community to select its favorite project.

Each year, the chapter also looks to the future of design by recognizing emerging talent through a student design competition. This year, 34 students representing eight Southern California schools participated in the juried design charette, with scholarships awarded to the winning entries.

More than an awards program, the event serves as a powerful reminder of the creativity, partnerships and shared vision that continue to shape the future of commercial interiors.

With regards,

Robert Norwood
 FIIDA — President

Sonaly Dudheker
 Assoc. IIDA — President Elect

Sarah Devine
 IIDA — Immediate Past President
 & Calibre Co-Chair

Kelsey Sebastian
 Ind. IIDA — VP Chapter Events
 & Calibre Co-Chair

Susan Suhar
 IIDA — VP Chapter Events
 & Calibre Co-Chair



IIDA | SOUTHERN CALIFORNIA chapter

2026 CALIBRE DESIGN AWARDS EVENT SPONSORS

MEDIA SPONSOR



GOLD SPONSORS



SILVER SPONSORS



BRONZE SPONSORS



2026 CHAPTER SPONSORS

TITLE SPONSOR



PATRONS



DONORS



FRIENDS



DESIGN PARTNERS



IIDA

SOUTHERN
CALIFORNIA
chapter

COMPTON HIGH SCHOOL

Compton

Design Firm: DLR Group

Compton Unified School District; Cumming Group;
Pulling Paint Murals; Swinerton Builders

The new Compton High School campus redefines learning through inclusive, flexible interior environments that foster connection, creativity, and community pride. Transparent academic spaces, collaborative learning suites, and world-class arts and athletic facilities support student belonging while linking school life seamlessly to the city of Compton and its resilient community.

The interior design solution for Compton High School centers on openness, adaptability, and connection—creating environments that actively support learning while reinforcing a strong sense of belonging. From the moment students and visitors enter the academic building, transparency and visual connectivity set the tone. Generous glazing, open circulation, and clear sightlines establish an atmosphere of access and safety, reinforcing the school's commitment to inclusivity and student well-being.

Flexible collaboration spaces anchor the interior experience. At the ground level, shared learning zones and informal gathering areas encourage students to connect, exchange ideas, and engage with hands-on programs tied to real-world skills. These spaces are intentionally positioned along primary circulation paths, turning movement through the building into opportunities for interaction and discovery.

Durable, warm materials and thoughtfully integrated color palettes create a welcoming environment while supporting the demands of a high-use educational setting. Movable partitions, shared breakout spaces, and visual connections between rooms allow teachers and students to shift seamlessly between focused instruction, group work, and interdisciplinary collaboration.

Throughout the campus, interior spaces are aligned with the broader site concept of connection and common ground. Together, these interiors create a cohesive environment where education extends beyond the classroom—one that celebrates creativity, builds confidence, and positions Compton High School as an innovative, shared space for students and the community alike.



CITY OF HOPE ORANGE COUNTY CANCER SPECIALTY HOSPITAL

Irvine

Design Firm: HOK

AEI; Altitude Design Office; City of Hope; Colin Gordon Associates; Hensel Phelps; HLB; Modern Art Services

City of Hope Orange County Specialty Cancer Hospital is Orange County's first hospital devoted exclusively to cancer care. Designed as a seamless extension of the adjacent Lennar Foundation Cancer Center, the interiors support a continuous care journey from diagnosis through inpatient treatment within a calm, restorative environment.

The design challenge focused on creating a human-centered interior environment that supports advanced cancer care while reinforcing a mission of healing, dignity, and compassion. The primary design concept integrates clinical performance with emotional well-being, ensuring that highly specialized medical environments remain welcoming, restorative, and adaptable as patient needs evolve.

Design strategies draw from feng shui principles, incorporating warm tones of copper, brass, and bronze to promote calm and balance. Landscaped courtyards, outdoor terraces, and respite areas are seamlessly woven into the patient and staff circulation, extending the healing experience beyond the building envelope and offering moments of pause and reflection.

The design also addresses the challenge of supporting staff well-being in a high-acuity environment. Nearly every workspace and breakroom is positioned to capture daylight and views, reducing stress and visual fatigue. A dedicated staff lounge on the operating floor opens directly onto a covered terrace, serving as a social and emotional hub for respite, collaboration, and celebration.

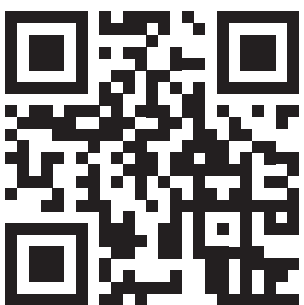
The hospital's small scale and coastal Southern California setting informed a restrained material palette of crisp white backgrounds paired with warm flooring, millwork, furniture, and commissioned original artwork. Selected in close collaboration with leadership and stakeholders, these elements elevate everyday moments and reflect a collective commitment to creating a compassionate, forward-looking environment for world-class cancer care.



GIBSON DUNN | CENTURY CITY
WORK LARGE



ALLIANCE FUNDING GROUP | TUSTIN
WORK MEDIUM



NOMINATED
IIDA SOUTHERN CALIFORNIA
CALIBRE DESIGN AWARDS
2026





SOUTHERN CALIFORNIA chapter



RODEO DRIVE WOMEN'S HEALTH CENTER

Beverly Hills

Design Firm: SAA interiors + architecture

Anderson Real Estate; IDG Structural Engineering; Rodeo Drive Women's Health Center; Stanhope Company Contractors; Timber Commercial; WM Group West Engineers

Rodeo Drive Women's Health Center transforms a constrained, windowless basement into a serene, boutique women's wellness clinic. Organized around a circular glass atrium, the design balances privacy, comfort, and intuitive care while seamlessly supporting both VIP and traditional patient experiences through hospitality-inspired materials and circulation.

The project required transforming a former basement storage suite into an upscale women's health and wellness clinic that supports expanding services and improves both patient and provider experience. The primary design concept became an atrium-centered plan that uses an existing circular glass atrium as the natural light source, focal point, and organizing circulation element, paired with a hospitality-infused material palette and biophilic elements to reduce stress and elevate care. The atrium-centered plan also reduces reliance on artificial lighting and supports circadian wellness, reinforcing a holistic approach to health while maximizing performance within an existing building footprint.

The design solution transforms a structurally constrained, windowless basement into a restorative, high-performing women's health clinic by leveraging a rare architectural condition as its defining feature. An existing circular glass atrium became the project's organizing anchor – an original planning move that introduces daylight, supports biophilic wellness, and establishes intuitive circulation.

Ultimately, the project demonstrates originality and suitability by transforming a difficult basement condition into a serene, light-filled healing environment that elevates women's healthcare experiences. By centering wellness, privacy, and intuitive movement, the design supports patient trust, provider well-being, and the broader social mission of accessible, personalized women's health through clarity, warmth, and hospitality-driven design.

WINNER
HEALTH ENVIRONMENTS SMALL (25,000 SF and under)



MAYDAN MARKET

Los Angeles

Design Firm: NCA Studio

Engineered Solutions; ITX Construction; Maydan Market; Paniagua Inc.; Preen Inc.

Maydan Market transforms a historic factory into an appealing marketplace housing multiple food and beverage vendors, while also creating individual brand identities and a unified sense of place. The design needed to balance intimate culinary experiences with the energy of a bustling public market, while structurally supporting an enormous central hearth and ventilation system within an under-reinforced brick building.

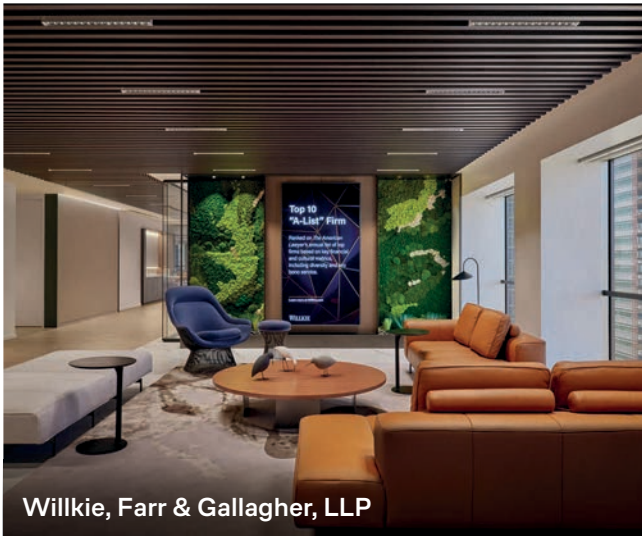
Drawing from the Arabic maydan as a gathering place, the design reimagines traditional market typologies for contemporary Los Angeles. Natural light strategies, low-VOC materials, and balanced acoustic design through thoughtful furniture selection create a comfortable, health-focused environment. Maydan functions as a rotating incubator for guest chefs from the local community, provides cooking classes and cultural events, and offers appealing all-day dining.

Each vendor maintains their distinct identity through eclectic custom elements: handmade tile tabletops, imported Moroccan tiles, vintage Malibu tile, hand-crocheted lighting fixtures, sculptural pendant bells, and locally-crafted millwork. This delightful palette of artisan-made furnishings creates individual character while contributing to a collective market atmosphere. The layout encourages exploration and unfolding moments of discovery, allowing guests to experience multiple cuisines and aesthetic environments.

The project successfully serves as a community incubator, providing rotating guest chefs from underserved local culinary communities a platform for growth while hosting cooking classes, cultural events, and acting as a daily gathering spot in a neighborhood with limited dining infrastructure. The design validates its intent as a resilient, inclusive neighborhood hub that bridges diverse income levels and cultural traditions around the universal experience of shared fire and food.

WINNER
HOSPITALITY & RETAIL





Willkie, Farr & Gallagher, LLP



BRG



Confidential Client



Hoag Pediatrics Clinic 114 Pacifica



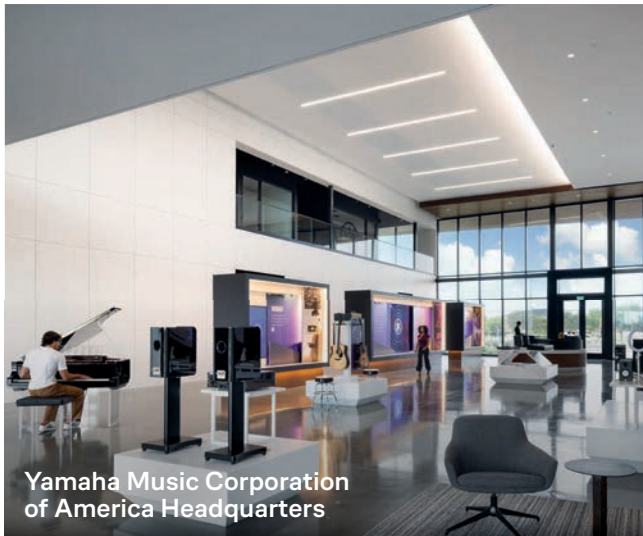
Confidential Client



California State University Long Beach – Student Union



The Delta One Lounge



Yamaha Music Corporation of America Headquarters



Gibson Dunn & Crutcher Los Angeles



Confidential Media Client



San Diego International Airport T1



Gensler Office of the Future



Zara at the Grove

Gensler

EXTENDS HEARTFELT CONGRATULATIONS TO THE TEAMS NOMINATED FOR THE 2026 CALIBRE AWARDS.

[gensler.com](https://www.gensler.com)

PAXTON

Huntington Beach

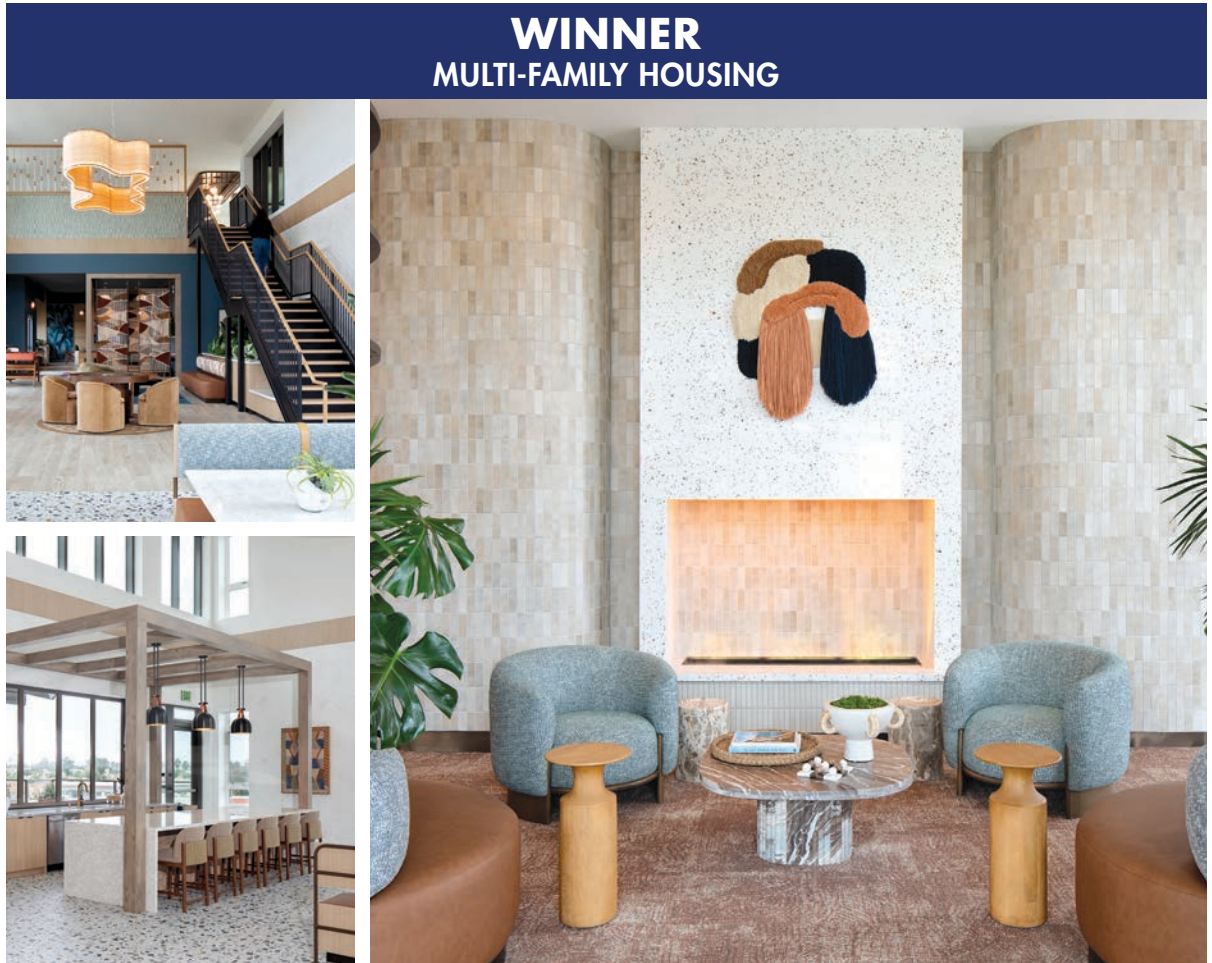
Design Firm: Vida Design

Betty Larkin; H Bloom; Holland Construction; Holland Partner Group; Lusive; Sanwood Fine Carpentry And Construction Inc.; Woventimes

Paxton reimagines “California Modern” through natural materials and contemporary forms, creating spaces that feel elevated yet lived-in. The project features Type III-A residential levels above grade, a rooftop recreation level, and six levels of Type I-A above-grade parking.

This multifamily community in Huntington Beach is shaped by its coastal setting, translating the easy rhythm of the shoreline into a refined residential experience. The design balances durability and sophistication with the warmth and effortlessness of beachside living. The team has created spaces that feel elevated yet inherently livable. The guiding concept, Sandy Sophistication, is expressed through a palette of beach-washed neutrals, layered textures, and thoughtfully contrasted materials. Light woods, surfaces with subtle movement, and soft finishes establish a calm, grounding foundation inspired by sand and surf. Aged metal accents introduce depth and definition, adding contrast without overpowering the natural material story. Pattern and texture remain intentionally restrained; woven elements, tonal tile, and gentle geometries evoke craft and motion while maintaining visual ease.

Wellness is central to the design approach. Spaces are intentionally shaped to encourage rest, renewal, and balance, with natural textures, biophilic cues, and abundant planting supporting both physical comfort and mental well-being. A timeless, material-forward palette minimizes the need for frequent refreshes, reinforcing a regenerative, long-term design mindset. Connection is fostered through warm, approachable shared spaces that reflect Huntington Beach’s outdoor-oriented culture. The result is a multifamily environment rooted in place, craftsmanship, and enduring coastal elegance. It’s a place that enhances resident experience while contributing meaningfully to the surrounding community.



SAN DIEGO INTERNATIONAL AIRPORT TERMINAL 1 & ROADWAYS

San Diego

Design Firm: Gensler

Flatiron Dragados; Turner Construction Company; Nova Jiang; San Diego County Regional Airport Authority; Security Column Artwork; Studio James Carpenter; Yellowgoat Design

The transformation of Terminal 1 at San Diego International Airport (SAN), redefines the traveler experience at the nation’s busiest single-runway commercial airport, expanding the original 1960s-era structure from 336,000 square feet to approximately 1.2 million square feet, positioning San Diego as a hub of innovation, connectivity, and sustainability.

SAN is the busiest single-runway commercial airport in the United States. Originally designed in 1967 to support 2.5 million annual travelers, Terminal 1 now accommodates more than 12 million passengers each year. The outdated facility struggled with overcrowded gate areas and congested roadways, creating an urgent need for a comprehensive transformation.

Through a collaborative design-build delivery, the team balanced the competing demands of a contractor, client representative, and client while integrating a forward-thinking design approach that aligned infrastructure performance with experiential, environmental, and civic goals.

The holistic, campus-wide design approach examined all the passenger touchpoints - from the roadway sequence and parking garages to the exterior buildings and walkways to the interior terminal experiences.

The new Terminal 1 offers state-of-the-art passenger processing, security, and amenities in a bright and flexible environment. New roadways, parking, and ground transportation systems reduce congestion. The extended arrivals curb provides ample seating areas and water-conscious landscaping. SAN integrates community-focused design, high-performance energy, water, and materials strategies, and resilient infrastructure to significantly reduce operational and embodied carbon while enhancing passenger health and experience.

The new Terminal 1 is the perfect example of how a large-scale, complex project can be realized as a source of pride for San Diego and the surrounding community.



In Pursuit of Your Perfect Project



John Muggenborg © 2024



© Vittoria Zupicich

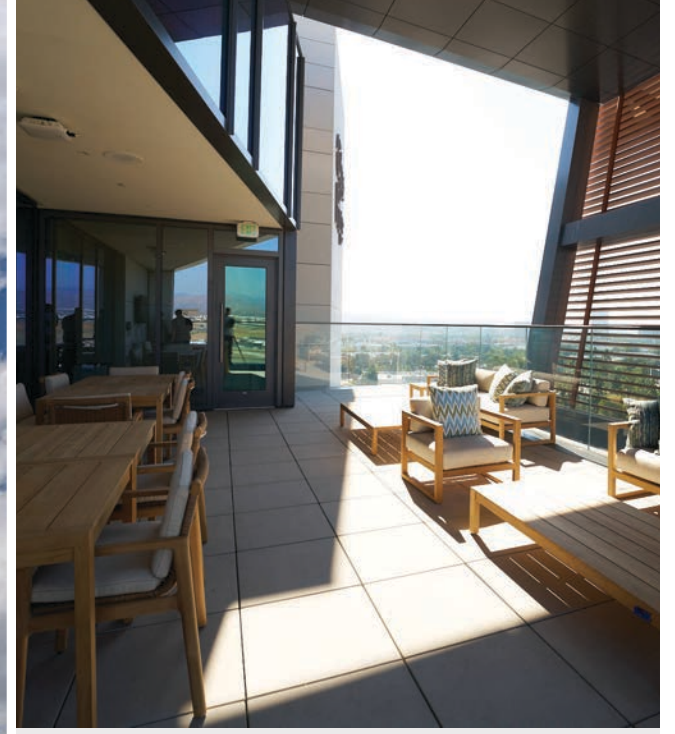


© Ryan Gobuty Photography, LLC

Clune Construction is an employee-owned, national general contractor, providing construction management services for some of the most respected companies in the world. With eight offices across the U.S. and over \$5 billion in secured revenue for 2026, Clune is ranked as a Best Place to Work across the nation.



[CLUNEGC.COM](https://clunegc.com)



DESIGNED FOR HEALING



“City of Hope gave me the gift of more tomorrows.”

—Brandon A., Grateful Patient

The hospital built to beat cancer also soothes the mind and the spirit.

At City of Hope Orange County’s cancer specialty hospital, patients benefit from more world-renowned cancer expertise and more clinical trials in an environment intentionally designed around their unique needs.

From the light-filled lobby with floor-to-ceiling windows to the patient rooms with stunning views of the Saddleback Mountains, every element of the hospital was designed to ensure patient comfort.

The colors, textures and finishes throughout Orange County’s only cancer specialty hospital reflect the principles of feng shui design. Vibrant art collections grace the hallways, providing comfort and inspiration to all who see it. Outdoor green spaces and breezy patios give patients and families the option to decompress in fresh air and sun, even during treatment.

Every detail has been carefully selected to be more like home than a hospital. Each element has been designed to heal the whole person. Now, with inpatient and outpatient care available on one academic cancer campus, a new era in cancer care has arrived.

This isn’t standard cancer care. This is lifesaving cancer care. This is Hope.



CityofHope.org/OC | 888.333.HOPE (4673)



Neil and grandson
City of Hope Cancer Patient



We focus on curing cancer.
You focus on life.

Pursuing cancer cures at the speed of life.

From diagnosis through survivorship, our more than 2,000 experts are focused on one thing—ending cancer. As one of the nation's largest and most advanced cancer research and treatment organizations, we deliver outcomes that exceed national standards.

cityofhope.org



City of
Hope®

CALIFORNIA STATE UNIVERSITY AT LONG BEACH STUDENT UNION

Long Beach

Design Firm: Gensler

Cal State Long Beach; John A. Martin & Associates, Inc.; Penta; Webb

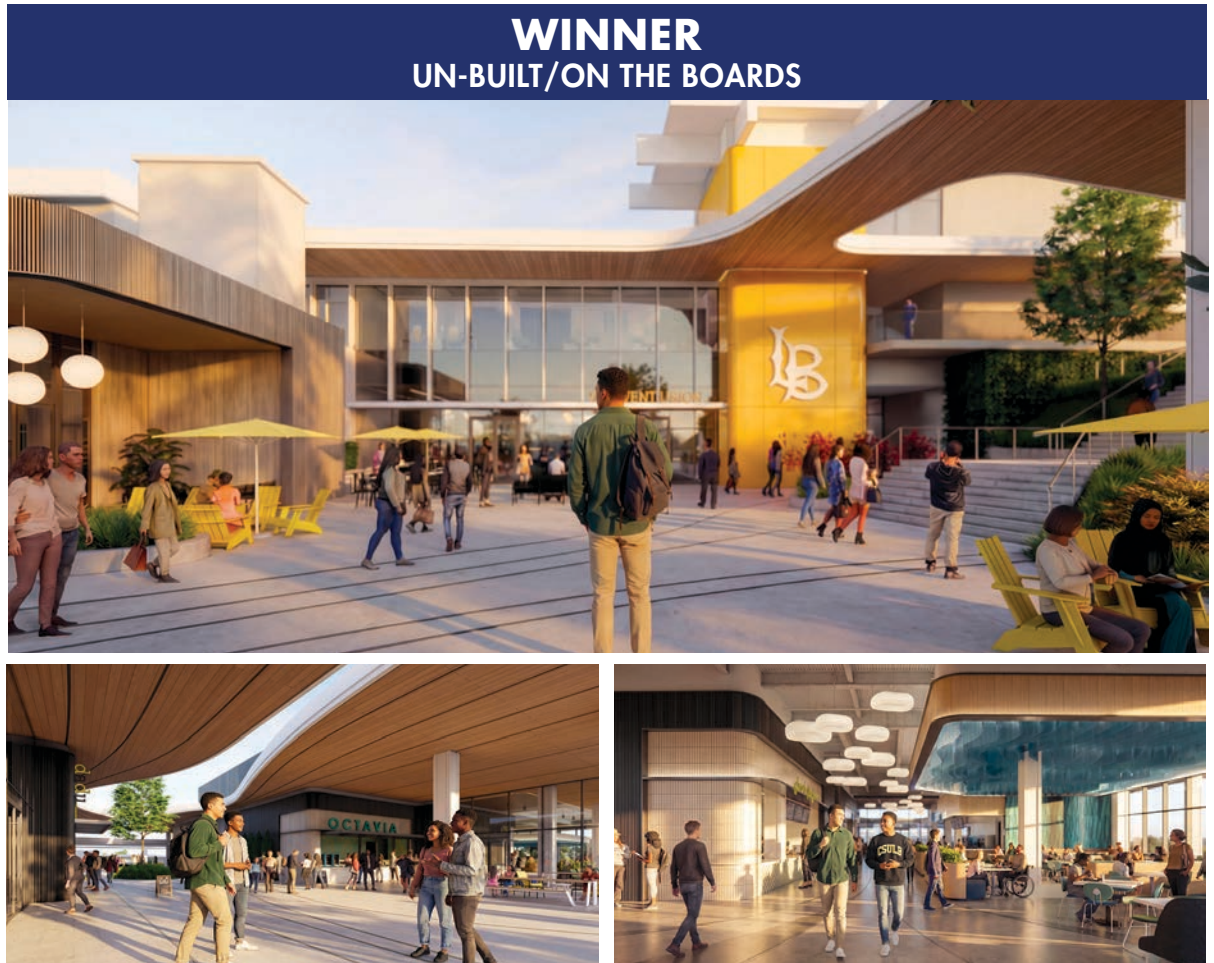
The CSULB Student Union is a 230,000 square foot renovation and expansion – the largest ever within the California State University system. It is envisioned to be an innovative student hub at the heart of the campus – a dynamic, student-centered space, designed to meet the needs of the next generations of students.

The CSULB USU design challenge was to reimagination the USU as a vital center and create an inclusive, dynamic environment that brings the CSULB community together under one roof – essentially reimagining the primary gathering place to meet 21st century student needs while honoring its mid-twentieth century architectural legacy.

Key programmatic anchors define the building’s character and activate the space throughout the day. This includes a vibrant food hall, coffee house, pub, neighborhood convenience store, wellness center, ballroom, recreational spaces, and administrative hubs for student leadership and cultural groups. These destinations are intended to foster a lively, collaborative atmosphere, reinforcing the Student Union’s role as both a social hub and a campus beacon.

The team transformed a multi-level mid-century hillside structure that had been fragmented by decades of additions, into a unified complex for student amenities and well-being.

The design team worked closely with each student group to understand spatial needs, functions, and material strategies that would best support their activities within each cultural suite. The project also reimagines collegiate amenities by broadening wellness beyond traditional mental health services. An expanded wellness center offers holistic features—including hydromassage beds, red light therapy, facials, and sleep lounges—establishing a new benchmark for comprehensive student well-being.



WINNER
UN-BUILT/ON THE BOARDS

VUORI HEADQUARTERS

Carlsbad

Design Firm: Ware Malcomb

Bandak Project Management; Burger Construction; Cruzan; Vuori

Vuori’s 133,000 square foot headquarters unites a rapidly growing workforce into one cohesive campus inspired by Coastal California living. Designed to foster collaboration, creativity, and movement, the light-filled workplace supports product innovation, employee wellness, and a strong connection between brand, culture, and community.

Vuori’s rapid growth created the need to consolidate multiple locations into a single headquarters that could support collaboration, innovation, and an expanding workforce, while authentically reflecting the brand’s Coastal California roots.

Early envisioning sessions established a shared understanding of goals, work styles, and cultural priorities. Anonymous polling and stakeholder workshops provided candid insight into how employees collaborate, focus, and move throughout the day. These findings informed a workplace strategy that emphasized flexibility, openness, and adjacency between highly interactive departments, ensuring the space supported both productivity and creativity.

The creation of “collide zones” and centralized interaction hubs encourages spontaneous engagement and cross-functional idea sharing. A change in floor elevation became the foundation for a dynamic loft and central stair, now a visual and social anchor for the campus. High ceilings, expansive glazing, and large sliding doors enhance daylight access and indoor-outdoor connectivity, reinforcing wellness and sustainability goals through passive design strategies.

The result is a headquarters that successfully addresses growth, supports evolving work patterns, and fosters a strong sense of community. By blending originality, wellness, flexibility, and brand authenticity, the project delivers a workplace uniquely suited to Vuori’s culture, one that inspires innovation while supporting the well-being of its people.



WINNER
WORK EXTRA-LARGE



Building with Purpose... Relationships that Last

Located in Los Angeles, the project at 143 South Barrington Place transforms an existing two-story, 6,183-square-foot bank building into a modern office environment through a complete change of use. Led by Wolcott Architecture and Pinnacle Contracting Corporation, the project repositions this distinctive 1965 Richard Dorman–designed building while preserving its architectural character. The redevelopment includes approximately 6,345 square feet of interior office renovations along with the addition of 1,301 square feet of new second-floor office space.

In addition to the interior improvements, the project includes significant upgrades to the parking garage and exterior areas. Site enhancements feature new landscaping and hardscape improvements, a wood deck installation, and updated exterior lighting designed to modernize the property while improving functionality, tenant experience, and the overall identity of the site.

wolcottai.com
pincon.com

W WOLCOTT
ARCHITECTURE

PINNACLE
CONTRACTING CORPORATION

theTRADEDESK – LOS ANGELES

Culver City

Design Firm: HOK

AMA Group; Calico Wallpaper; JB3D; Sharpe Interior Systems, INC.; Sierra Pacific Constructors; Tangram Interiors; theTradeDesk

At its workspace, the TradeDesk brand comes to life through a deep connection to local culture and a genuine celebration of the people who power the office every day. A palette of bold, saturated color infuses the digital marketing company's space with energy, reinforcing a narrative of honest grit, deep dedication, and a powerful connection between place, people, and purpose. Concrete, steel, wood, and bold color shift from day to night, anchored by a glowing "Social Hub" that captures the pace, creativity, and ambition of a global tech company.

The design concept, "Honest Grit," is rooted in Los Angeles' raw energy and the company's core values, translating authenticity, momentum, and creative exchange into a workplace defined by movement and making. Imperfections are intentionally embraced as evidence of progress, resilience, and forward motion, reinforcing a culture built on iteration rather than polish.

As employees move through the floorplate, materials transition from cooler, deeper tones to brighter, lighter hues, mirroring the rhythm of the workday and the city beyond. At the center, the Social Hub anchors the office, glowing with the warmth of sunrise and sunset to draw people together and create shared energy and belonging. Midway through design, rapid company growth required the workplace to expand from a single floor planned for 265 employees into a two-floor environment accommodating 400. This shift introduced planning and coordination challenges, demanding increased density without compromising connectivity or culture. The completed environment establishes a vibrant West Coast hub where employees feel energized, connected, and supported.



**WINNER
WORK LARGE**



CORPORATE INTERIORS
CAPITAL UPGRADES
LIFE SCIENCES
HEALTHCARE
INDUSTRIAL
RETAIL

INDUSTRY **DISRUPTOR** IN COMMERCIAL INTERIORS, ARCHITECTURE, & EXPERIENTIAL DESIGN



THE AZOFF COMPANY

Los Angeles

Design Firm: M Moser Associates

Art Department; BCCI; Sharpe Interior Systems Inc.; Summit Construction Management; Tangram; The Azoff Company

The Azoff Company's 12,100 square foot hospitality-driven entertainment suite is designed to host intimate gatherings and high-profile events. Timeless aesthetics connect with optimal functionality in a one-of-a-kind space for this LA entertainment powerhouse.

The project challenged the team to design a hospitality-driven entertainment space that could extend a legacy rooted in music, culture and storytelling, without relying on overt branding or spectacle. The environment needed to feel timeless, discreet and deeply personal, while supporting a wide range of uses, from private listening sessions and executive dinners to large-scale industry events.

Hospitality, rather than workplace convention, guided every decision. A cinematic arrival sequence was used to shift guests' state of mind, transitioning from a standard corridor into a warm, immersive setting. Inside, a collection of purpose-built environments prioritize connection, intimacy and flexibility. Wellness and social impact were addressed through material warmth, acoustic comfort, biophilic elements and seamless indoor-outdoor flow, creating an environment that encourages presence, ease and meaningful human interaction.

A listening lounge, private dining room, conference rooms and informal seating areas are arranged around a central bar that anchors the suite socially and spatially. The absence of traditional workstations reinforces the focus on conversation, immersion and relationship-building. Each space supports a different scale and type of gathering, allowing the environment to adapt effortlessly from day to night.

Today, the space is heavily booked and actively used. It performs as a dynamic platform for storytelling, connection and cultural exchange, proving that thoughtful design can turn complexity into clarity and create environments that feel both effortless and enduring.



2026 IIDA Calibre Awards

Celebrating The Teams Behind Our 10 Award Nominations



SAN DIEGO ARCHITECTURE & ENGINEERING OFFICE

San Diego

Design Firm: SmithGroup

Daltile; Hyphn & Fringe; Shaw Contract; Simple Roots Plant Design; Skye Walker Art; Swinerton

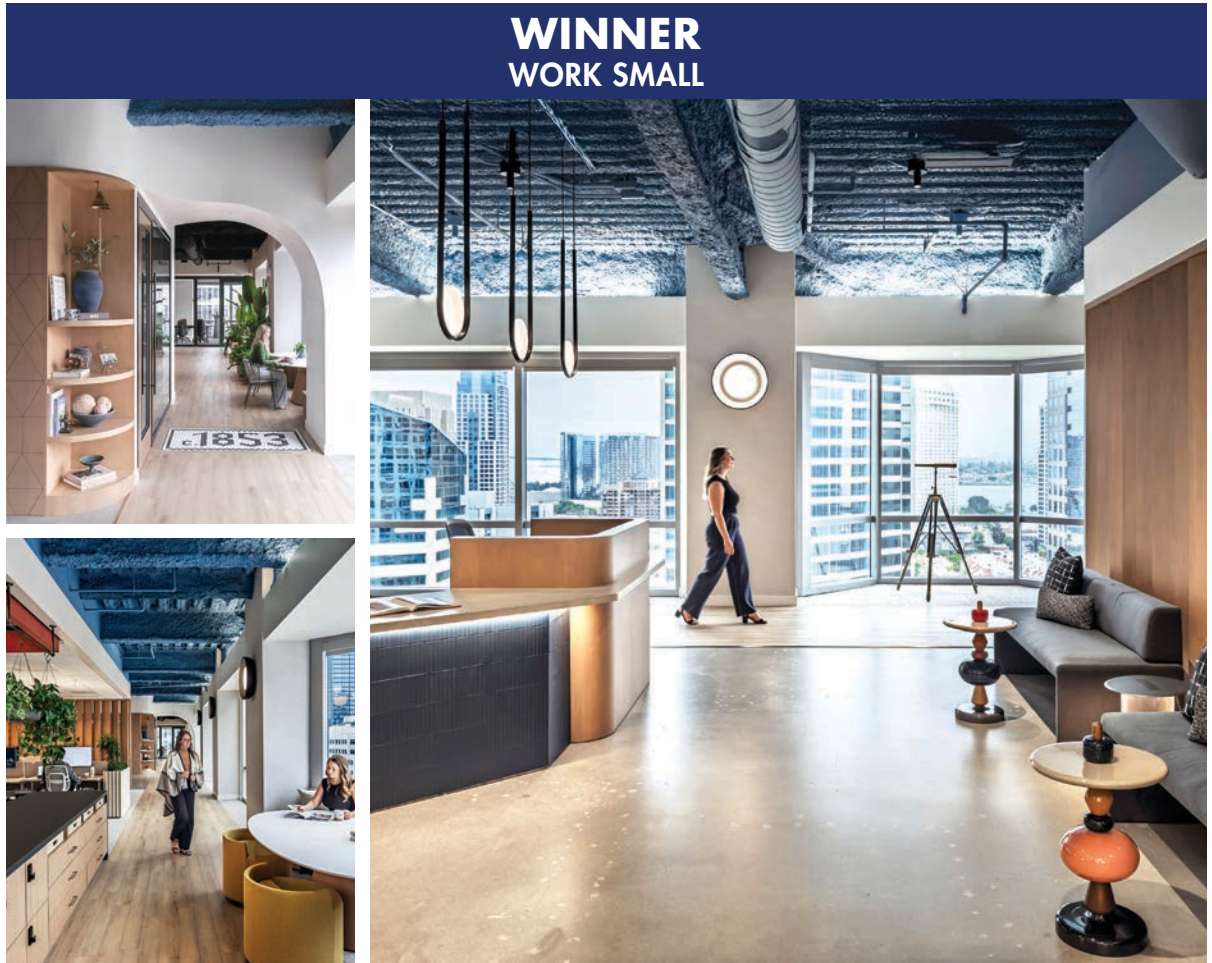
The new LEED Silver, 8,060 square foot office for a San Diego architecture firm draws inspiration from the region's waterfront, merging cultural identity with performance-driven design. Panoramic views, biophilic materials, and flexible spaces enhance wellness and collaboration, while daylight optimization, a reduced footprint, and low impact finishes support a resilient, future-ready workplace.

The project required transforming a compact floorplate into a future ready workplace capable of supporting 35 daily users while scaling to 60 without added construction. The space also needed to host community and industry gatherings of up to 70 people, demanding an unusually high level of flexibility from a small footprint.

The design responds by treating flexibility as the central organizing principle. A furniture-based planning approach allows the office to expand or contract with ease. Open team pods, variety of meeting room sizes, flexible work seats, and a reconfigurable break room island enables rapid transformation without construction. The break room and boardroom combine into a generous event suite, doubling as both a social hub and a 70-person gathering space. The mix of tactile materials creates a workspace that feels grounded and sensory without overwhelming the eye. Sustainable choices are embedded throughout.

Local identity is expressed through a blue circulation path inspired by the underside of the Coronado Bridge. CNC-routed wood panels reference historic tile patterns and contribute a crafted quality that delights visitors.

By combining adaptability, environmental performance, cultural clarity, and sensory richness, the design creates a workspace that feels efficient yet warm, compact yet expansive, and grounded in both its city and its future.



2026 NOMINEES



RCOE CONFERENCE CENTER & GAMING ARENA
Riverside
Design Firm: DLR Group
Corian Surfaces; Erickson Hall Construction; Interface; Riverside County Office of Education; Shaw Contract; Terramai



SADDLEBACK@ATEP
Tustin
Design Firm: Gensler
P2S; Saiful Bouquet;
South Orange County Community College District; Swinerton; Webb Food Service Design



SAC HEALTH BRIER CAMPUS MOB
San Bernardino
Design Firm: Perkins&Will
BNBuilders; Gafcon; KPFF; SAC Health; SCI Lighting Solutions; Systems Source; WSP



UCI HEALTH – IRVINE
Irvine
Design Firm: CO Architects
Bluespace Interiors; Degenkolb; Hensel Phelps; Ridge Landscape; Stantec; tk1sc; UCI Health



CEDARS-SINAI MARINA TOWERS 5TH FLOOR
Marina Del Rey
Design Firm: Perkins&Will
Alan Noelle Engineering; Cedars-Sinai Health System; Lam & Teat; PIVOT Interiors; Quality First Woodworks; Tangram; TIS Construction Services



HOAG PEDIATRICS CLINIC 114 PACIFICA
Irvine
Design Firm: Gensler
California Commercial; Christopher's Inc.; Hoag; Solid Rock; TK1SC; West Coast Build; WSP



FLEURETTE
La Jolla
Design Firm: Studio UNLTD
American Assets; Cohn Restaurant Group; Equity Builders; Fleurette; KRBS; Maura Clark Studio



JADE
Los Angeles
Design Firm: Scala Studio
Atelier Colon; Holwick Constructors, Inc.; Moon Group; Padaro Development; Redraw + Atelier OHYO; Two Point; Woodtech Studio



JAMUL CASINO RESORT
Jamul
Design Firm: JCI Architecture
C.W. Driver; G2 Consulting Engineers; Jamul Casino Resort; KPFF; Ruzika



MONACO ITALIAN KITCHEN
Irvine
Design Firm: H. Hendy Associates
CB Kenner; CT Design Inc.; Emmes Realty Service; Monaco Italian Kitchen; Southern California Restaurant Design Group



SAN DIEGO PADRES WESTERN METAL SUPPLY CO. BUILDING RENOVATIONS
San Diego
Design Firm: Gensler
Ashley Donohue Procurement; Heritage Architecture; San Diego Padres; Shawmut; Texture



THE DELTA LOUNGE
Los Angeles
Design Firm: Gensler
Arup; Clune Construction; Davinci Marble; Delta Air Lines; Dragos Marble; Pulp Studios; Seeley Brothers



VACA
Los Angeles
Design Firm: Studio UNLTD
Brookfield Properties; Howard CDM; Kitchen Restaurant & Bar Specialists (KRBS); Vaca Restaurant Group



ZARA, THE GROVE
Los Angeles
Design Firm: Gensler
Coffman Engineers; Inditex / Zara USA; JRM Construction West, LLC; M-Engineering; Studio Zara



ANCORA
San Diego
Design Firm: Vida Design
Ancora; Greystar; Maryam Turkey; Sarah Dehandschutter



CLOUD HOUSE
Stanton
A Design Firm: H. Hendy Associates
O; Bonanni Development; JMI; MJS; Spectacle, Inc.



FIGUEROA EIGHT
Los Angeles
Design Firm: Rottet Studio
Englekirk Structural Engineers; Glumac; Johnson Fain; Lendlease Construction, Inc.; Lendrum Fine Art; Mitsui Fudosan America; RELM



ALTADENA GIRLS COMMUNITY CENTER
Pasadena
Design Firm: AUX Architecture
Altadena Girls; BCCI Construction; Gardiner & Theobald; Kuzco Lighting; Maharam; Only Shades LA; Pinnacle Communication Services



HEARTBURST, CONFIDENTIAL LIFESCIENCES CAMPUS
Irvine
Design Firm: OFFICEUNTITLED
ARUP; Clune Construction; Edwards Lifesciences; SEAD



NAVY SEAL MUSEUM
San Diego
Design Firm: ID Studios, Inc.
Burger Construction; BWE; Exhibit Concepts; G&A; H+W; Navy Seal Museum San Diego; Turner & Townsend



ORANGE COUNTY HEALTH CARE AGENCY
Irvine
Design Firm: Gensler
KPFF; OC Health Care Agency; PCL; Waveguide; WSP



SAN DIEGO SYMPHONY ORCHESTRA – JACOBS MUSIC CENTER RENOVATION
San Diego
Design Firm: HGA Akustiks; BWE; Rudolf & Sletten; San Diego Symphony Orchestra; Schuler Shook

PUBLIC & COMMUNITY SPACES



CENTENNIAL HIGH SCHOOL
Compton
Design Firm: DLR Group Compton Unified School District; Cumming Group; Interface Nora Rubber Flooring; Pacific Architectural Solutions

UN-BUILT/ON THE BOARDS



DOWNTOWN THOUSAND OAKS CIVIC ARTS PLAZA BUILDING
Thousand Oaks
Design Firm: SmithGroup O; City of Thousand Oaks; KPFF; RRM Design Group

UN-BUILT/ON THE BOARDS



LUXURY APARTMENT TOWER IN DOWNTOWN SAN DIEGO, CA
San Diego
Design Firm: AC Martin Daltile; Goldrich + Kest; Shaw Contract; Steelcase; Swinerton

UN-BUILT/ON THE BOARDS



PALISADES CHARTER HIGH SCHOOL
Los Angeles
Design Firm: DLR Group Brandow & Johnston; Kimley Horn; Los Angeles Unified School District; MSI; Roshanian & Associates

UN-BUILT/ON THE BOARDS



SAN DIEGO COLLEGE OF CONTINUING EDUCATION - EDUCATIONAL CULTURAL COMPLEX
San Diego
Design Firm: HGA Beckmann Acoustics; Degenkolb Engineers; JUST Design; P2S Engineers; PCL Construction; San Diego Community College District; The Shallock Collaborative

UN-BUILT/ON THE BOARDS



BOOT BARN HEADQUARTERS
Irvine
Design Firm: Ware Malcomb/The Heartland Interior Design Boot Barn; Howard Building Corporation; JLL; Taber Company; TK1SC

WORK (EXTRA LARGE)



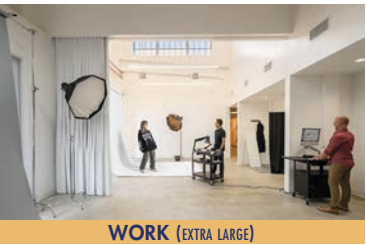
CONFIDENTIAL MEDIA CAMPUS
Santa Monica
Design Firm: Terrain 11kps; ARC Engineering; Holmes Structures; Mollenhauer; Pacific Edge Projects; Swinerton; Tangram

WORK (EXTRA LARGE)



CONFIDENTIAL MEDIA CLIENT
Burbank
Design Firm: Gensler AMA Group; Angel City Lumber; Krismar Construction; Sheridan Inc.; Tangram; Webb

WORK (EXTRA LARGE)



GLOBAL FASHION RETAILER
Los Angeles
Design Firm: Revel Architecture & Design AMA/ Henderson Engineers; Hohbach Lewin, Inc.; JLL; Sierra Pacific Constructors; Systems Source

WORK (EXTRA LARGE)



HUDSON PACIFIC HQ
Los Angeles
Design Firm: Gensler Alfa-Tech; Glatman Simpson; Howard Building Corporation; Hudson Pacific Properties; Oculus Light Studio; RWDI Acoustic Design; Unisource Solutions, LLC

WORK (EXTRA LARGE)



INTERNATIONAL FINTECH COMPANY CONFIDENTIAL
Costa Mesa
Design Firm: O Arch, Inc. HITT Contracting, Inc.; Icon Consulting Engineers, Inc.; Pascoe Dirpes & Associates; The Irvine Company

WORK (EXTRA LARGE)



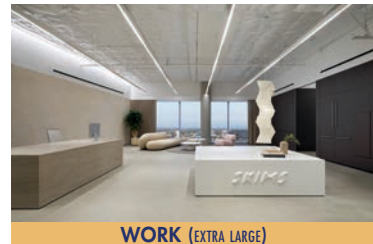
LEIDOS
San Diego
Design Firm: LPA Alexandria Real Estate Equities, Inc.; DPR; GroundLevel Landscape Architecture; MBI (formerly Akela); MPE

WORK (EXTRA LARGE)



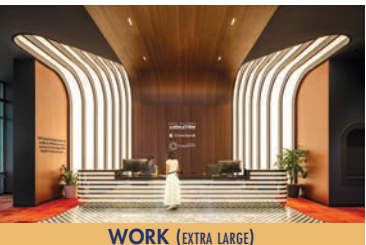
SHEPPARD MULLIN
Los Angeles
Design Firm: Studio Alliance ARC Engineering; Clay Enterprises; Flux Studio Ltd; Integrated Media Technologies, Inc.; Sheppard Mullin; Taslimi Construction

WORK (EXTRA LARGE)



SKIMS/GOOD AMERICAN
Los Angeles
Design Firm: ODAA ARUP; Corporate Contractors; Newmark; Pinnacle; Studio Other/Tangram

WORK (EXTRA LARGE)



SONY PICTURES' MID-WILSHIRE CAMPUS
Los Angeles
Design Firm: RIOS Howard Building Corporation; Oculus Light Studio; PLANNET; RWDI; Sony Pictures Entertainment; Structural Focus

WORK (EXTRA LARGE)



VENTURA FOODS
Irvine
Design Firm: H. Hendy Associates JLL; KPRS; Ventura Foods; WSP

WORK (EXTRA LARGE)



VIVIDION TENANT IMPROVEMENT
San Diego
Design Firm: McFarlane Architects Alexandria Real Estate Equities; DPR Construction; Elluminet an Elen Studio; ICE (Innovative Commercial Environments LLC); McParlane & Associates; MPE Consulting

WORK (EXTRA LARGE)



WHITE & CASE LOS ANGELES EXPANSION & RENOVATION
Los Angeles
Design Firm: Perkins&Will EvensonBest; Howard Building Corporation; Nabih Yousef Associates; Oculus; Syska Hennessy; White & Case

WORK (EXTRA LARGE)



WILLKIE, FARR & GALLAGHER, LLP
Los Angeles
Design Firm: Gensler Clune Construction; KGM Lighting; MR Walls; Seeley Brothers; Studio Other; Tangram; Willkie, Farr & Gallagher

WORK (EXTRA LARGE)



YAMAHA MUSIC CORPORATION OF AMERICA HEADQUARTERS
Buena Park
Design Firm: Gensler KPFF; KPRS; Syska Hennessy; Tangram; Yamaha Corporation of America

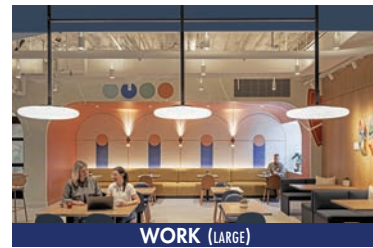
WORK (EXTRA LARGE)



CONFIDENTIAL CLIENT MEDIA SPACE
 Los Angeles
 Design Firm: Gensler
 ARC Engineering; GCX; IMEG; Oculus Light Studio; Pivot Interiors; Watchdog



CONFIDENTIAL LAW FIRM
 Los Angeles
 Design Firm: HLW
 ARC Engineering; HITT; Luminarch Studio; Sheridan Group; VVA



CONFIDENTIAL TECH CLIENT
 San Diego
 Design Firm: SmithGroup
 Ehmcke Sheet Metal Corp.; Skyline Construction; SPMDesign; WB Powell



DWT
 Los Angeles
 Design Firm: DIALOG San Francisco / Wolcott Architecture
 Davis Wright Tremaine, LLP; Howard Building Corporation; Lam & Tea; Michael Wilson Architectural Photography; PeopleSpace; Savills



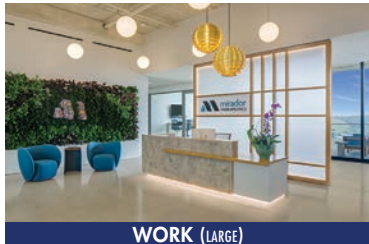
GENSLER LOS ANGELES OFFICE OF THE FUTURE: PHASE II
 Los Angeles
 Design Firm: Gensler
 ARC Engineering; Oculus Light Studio; Tangram; Tectonics Construction; Western Office



GIBSON DUNN CENTURY CITY
 Los Angeles
 Design Firm: Gensler
 ARC; ECC; Gibson Dunn; J&V Construction; Station 22 Studio; VVA; Western Office



INSIGHT GLOBAL - LOS ANGELES
 Los Angeles
 Design Firm: ASD|SKY
 Alfa Tech; Corporate Environments; Esplanade Builders, Inc.; Insight Global; Interface/FLOOR; Maharam; Turf



MIRADOR TENANT IMPROVEMENT
 San Diego
 Design Firm: McFarlane Architects
 BioScience Property Investments; Coffman Engineers Inc.; ICE (Innovative Commercial Environments LLC); JB Pacific; MA Engineers



UNILEVER : HEALTH AND WELLBEING HUB
 El Segundo
 Design Firm: Scala Studio
 Ad Impact; JLL; Moshiri Associates, Inc.; Peoplespace; Sierra Pacific Constructors; Simon S. Wong & Associates; Unilever



ALLIANCE FUNDING GROUP
 Tustin
 Design Firm: Kamus + Keller Interiors and Architecture
 Alliance Funding Group; CG Solid Surface; ECC; PeopleSpace



CONFIDENTIAL CLIENT
 Los Angeles
 Design Firm: STUDIOS Architecture
 AMA Group; Banks Landl; Holwick; PeopleSpace; RWDI; Team Werc



CONFIDENTIAL FINANCIAL SERVICES FIRM
 Los Angeles
 Design Firm: Gensler
 ARC Engineering; Howard Building Corporation; JLL; Luminarch Studios; Seeley Brothers; Tangram



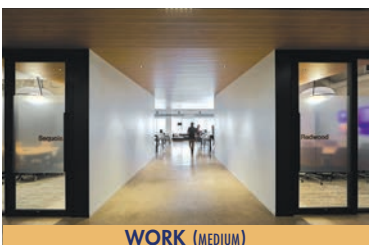
CONFIDENTIAL MEDICAL INSTITUTE
 Irvine
 Design Firm: HOK
 AVI-SPL; BnB Builders; KPFF; Oculus Light Studio; RWDI; Tangram



DOWNTOWN LOS ANGELES INTERDISCIPLINARY DESIGN FIRM OFFICE
 Los Angeles
 Design Firm: SmithGroup
 Bask; Haworth; Howard Building Corporation; OFG / Teknion; Studio Other; Taber Company



e.i.f. BEAUTY
 Los Angeles
 Design Firm: Revel Architecture & Design
 AlfaTech; Cushman Wakefield; e.i.f. Beauty; Inside Source; JTMagen



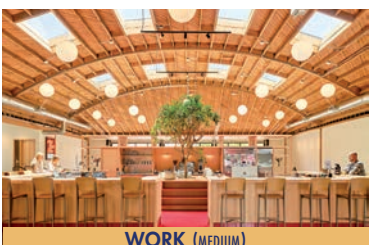
GOODMAN
 Irvine
 Design Firm: LPA
 CBI; Goodman; LBA Realty; Turelk; WSP



HYPHN SAN DIEGO EXPERIENCE CENTER
 San Diego
 Design Firm: Hollander Design Group
 Falkbuilt; Hyphn; JVA; Old Fashioned Lumber; Pacific Building Group; Steelcase



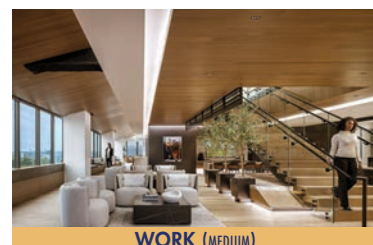
LIGHTSPARK
 Los Angeles
 Design Firm: Rapt Studio
 ARC Engineering; Banks Landl Lighting Design; Blik Studio; GCX; Pacific Edge Projects; Tangram Technology; Western Office



MOTHER LA
 Los Angeles
 Design Firm: Shadow Architect
 AT Designs; Curato Design Build; Fundrise; HLW; Marcos Construction; Mother LA; Office of BC



PUMA STUDIO
 Los Angeles
 Design Firm: West of West Architecture + Design
 Bardas Investment Group; Howard Building Corporation; Oculus Light Studio; Office of BC; Offset Structural Engineering; PUMA



RISEWELL HOMES IRVINE HEADQUARTERS
 Irvine
 Design Firm: Gensler
 Howard Building Corporation; Light Build Design; MAARS; Risewell Homes; SRSS; Tangram; TK1SC / WSP

2026 NOMINEES



SAN DIEGO GAS AND ELECTRIC (SDG&E) RESILIENCE CENTER
San Diego
Design Firm: HED
Armstrong Ceilings; Drew George Partners, Inc.; Glumac; GMBI; San Diego Gas & Electric; Storyline; Swinerton

WORK (MEDIUM)



SAVILLS LA
Los Angeles
Design Firm: FORMM
Bernhardt Design; Enginova; RAM Construction; Savills; Studio Other

WORK (MEDIUM)



TROUTMAN PEPPER
Irvine
Design Firm: ASD|SKY
GMBI; PDA Engineers; Troutman Pepper; West Broadway Construction

WORK (MEDIUM)



BERKELEY RESEARCH GROUP
Century City
Design Firm: Gensler
Berkeley Research Group; Environments at Work; Gensler; Howard Building Corporation; KPFF; Newmark; SCI Lighting Solutions; WM Group

WORK (SMALL)



BPM LONG BEACH
Long Beach
Design Firm: SAA interiors + architecture
Accurate Laminated Products, Inc.; BASK; BPM; Light Build Design; Turek, Inc.

WORK (SMALL)



DLR GROUP RIVERSIDE OFFICE
Riverside
Design Firm: DLR Group
Howarth; HITT; KCAV; Mohawk; Unisource Solutions, LLC; Vision Consulting Services

WORK (SMALL)



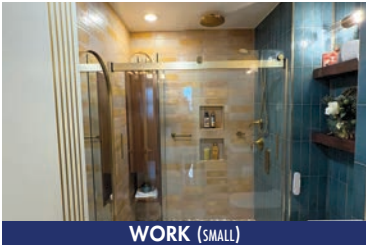
GLOBANT AT INTUIT DOME
Inglewood
Design Firm: Moshiri Associates, Inc.
AM Cabinets, Inc.; Clippers; Globant; JLL; Sharpe Interior Systems, Inc.; Sierra Pacific Constructors; Simon S. Wong & Associates

WORK (SMALL)



LIGHTHOUSE
Los Angeles
Design Firm: Wolcott Architecture
ARC Engineering; GLLB Studio; KPFF; Lighthouse Real Estate; Pinnacle Contracting Corporation

WORK (SMALL)



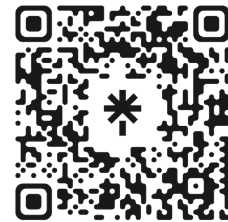
REMODELING A STANDARD BATHROOM TO MASTERPIECE
San Diego
Design Firm: Rapha Interiors
Daltile; Kohler; Mariana Wassef; TCPN INC

WORK (SMALL)



SAN DIEGO FINANCIAL FIRM
San Diego
Design Firm: IA Interior Architects
Burnham; Cerami; CMTA; HITT Contracting; JPMC Confidential; KPFF

WORK (SMALL)



SCAN FOR MORE INFO ON THE 2026 CALIBRE AWARDS



License No. 751130

We build spaces for your needs today and tomorrow.

At KPRS, we create inspirational spaces around their purpose and possibilities. From high-rise offices to creative campuses, we execute with a precision and efficiency that returns you to work more quickly and helps you stay flexible for an uncertain future. Build with us and work at the speed of our changing times.

Let's build together.

CONGRATULATIONS TO THE

IIDA

SOUTHERN CALIFORNIA chapter

2026 CALIBRE DESIGN AWARDS NOMINEES

Thank you to our Chapter Sponsors, Event Sponsors, and everyone who generously contributed to our raffle in support of the incredible organization, A Sense of Home.

www.asenseofhome.org

IIDA is committed to uplifting and empowering our members to design and create meaningful, positive impacts within our communities and beyond. Congratulations Winners and Nominees. See you in 2027!

Visit us at www.iida-socal.org.