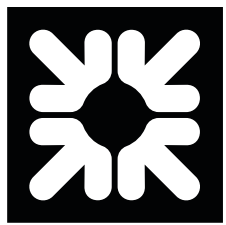




# LA's LEGAL CLASS OF 2026

PLATINUM SPONSOR



# Citizens

PRIVATE BANK™

GOLD SPONSORS



BEVERAGE SPONSOR





### ANGELA AGRUSA

Partner; Managing Partner, Los Angeles;  
Co-Chair, US Product Liability, Mass Torts  
& Class Actions Litigation  
DLA Piper

Angela Agrusa is one of the nation's most trusted and formidable class action litigators, repeatedly selected to defend Fortune 500 companies in matters that threaten not only financial exposure, but brand integrity and public trust. As a partner at DLA Piper, Agrusa is routinely called upon to lead "bet the brand" litigation – high stakes disputes involving novel legal theories, unsettled law, business existential outcomes, and intense public scrutiny, where decisions can reshape industry practices and legal precedent.

Across her career, Agrusa has successfully defended market leading companies including Chipotle, Danone, Johnson & Johnson, MGM Resorts, Blackstone, and T-Mobile in complex, first of their kind matters spanning consumer products, hospitality, and emerging mass torts.

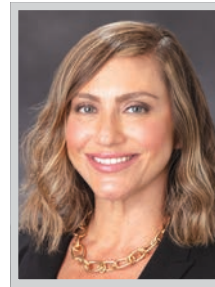


### PETER ANDERSON

Partner  
Davis Wright Tremaine LLP

Peter Anderson is universally recognized as one of the leading litigators in the music industry today. On behalf of the largest record labels and the industry's biggest recording artists he has won a series of groundbreaking cases touching some of the music world's most valuable IP. A 2020 9th Circuit en banc decision he won for Led Zeppelin in a copyright case challenging "Stairway to Heaven" established the governing terms by which copyright cases are adjudicated, in the music world and beyond, and has been cited more than 300 times in federal district and appellate courts.

Anderson continues to be a go-to lawyer for high-stakes, cutting-edge cases, highly regarded not just for his industry-leading IP expertise but for his excellence in the courtroom.

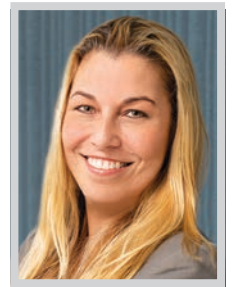


### CARRIE BARBEE

Partner, IP Department; Managing Partner,  
Los Angeles  
Kilpatrick Townsend & Stockton

Caroline "Carrie" Barbee was honored to be named the managing partner for the Kilpatrick Townsend & Stockton's Los Angeles office in late 2025. Los Angeles office. Barbee focuses her practice on policing and enforcing trademarks and copyrights – through both pre-litigation enforcement and enforcement litigation – for companies across industries, including some of the world's largest technology and consumer products companies. She has designed and implemented intellectual property enforcement programs protecting against all types of copyright and trademark violations, including counterfeiting, gray market, infringement, phishing, hacking and cyber-squatting. She was also named a "Trademark and Copyright Leader" by World IP Review.

In addition to litigation, Barbee's practice includes enforcement through ICANN's domain name dispute resolution policy.



### SABRINA BELDNER

Partner  
McGuireWoods LLP

Year after year, McGuireWoods partner Sabrina Beldner demonstrates why national and international companies consider her their go-to counsel for high-stakes employment disputes. Beldner is a versatile, trusted advocate who excels across every dimension of employer-side labor and employment law. Her diverse practice consists of handling complex wage and hour class actions and PAGA litigation, single-plaintiff employment litigation, and traditional labor law matters that include representing employers in union organizing campaigns, collective bargaining, labor arbitrations, and NLRB proceedings.

Beldner led the McGuireWoods' Labor & Employment Department to unprecedented growth in her four-year term as chair from June 2020 to June 2024, and invigorated the firm's vibrant LGBTQ+ Lawyers Network as its chair during her year tenure.



### PHILIP BONOLI

Partner  
BG Law

Philip Bonoli of BG Law is a seasoned litigator with extensive experience in a diverse range of employment matters, including wrongful discharge, discrimination, harassment, tort claims, and contractual disputes. The son of Italian immigrants who arrived in the US in the mid-1960s, Bonoli is the first attorney in his family. Raised to value education and hard work, he built his career on perseverance and grit, never turning down an assignment, knowing someone else would take it if he didn't. While others declined depositions, motions, oral arguments, arbitrations, mediations, and trials, Bonoli stepped up.

A career litigator, Bonoli has argued before state, federal and appellate judges across all stages of litigation. His work ethic, courtroom breadth, and versatility set him apart in the field.



### STEPHEN BROOME

Partner  
Quinn Emanuel Urquhart & Sullivan, LLP

Stephen Broome is a partner in Quinn Emanuel Urquhart & Sullivan's Los Angeles and New York offices and the co-chair of the firm's Data Privacy and Security Practice. Broome maintains a sophisticated commercial litigation and trial practice, with particular emphasis on data privacy and security matters, antitrust litigation, intellectual property disputes, and class actions.

As co-chair of Quinn Emanuel's Data Privacy and Security Practice since its inception, Broome has helped build the practice into one of the most prestigious and sought-after in the United States. His practice is recognized as a market leader in cybersecurity litigation. He and his teams have not merely navigated but triumphed in high-stakes data privacy and security matters, a field that is creating unprecedented exposure for defendants.



### SCOTT BURTON

Co-Head, Environmental and Mass Tort,  
United States  
Norton Rose Fulbright US LLP

As the US co-head of Environmental and Mass Tort at Norton Rose Fulbright, Scott Burton brings over three decades of deep environmental, energy and natural resources experience to his work, advising clients across California, the US and internationally on some of the most complex, high-profile and high-risk issues facing their industries and our economy. His background in engineering and economics consulting uniquely positions him to translate technical, regulatory and commercial challenges into creative strategies that defend client operations and advance major projects.

Burton studied engineering at the US Navy Nuclear Propulsion School, then located at the Naval Training Center Orlando, Florida, and served as a submarine prototype nuclear reactor plant operator at the DOE/DOD Idaho National Laboratory Naval Reactor Facility.



### JASON CAMPBELL

Lead Partner, Los Angeles Labor  
and Employment Practice  
Winston & Strawn LLP

Jason Campbell – the leader of Winston & Strawn's Los Angeles Labor and Employment Practice – is a nationally recognized authority in labor and employment law who is known for his dedication to his work, outstanding client service, and commitment to bettering the Greater Los Angeles Area.

Campbell regularly works with local and national clients on wage and hour class, collective, and representative action defense. He also defends employers against wrongful termination, harassment, discrimination, and retaliation claims in trials in state and federal court and in administrative proceedings. Campbell also possesses the ability to adeptly represent clients across a range of vastly different industries including banking and financial services, luxury retail and manufacturing, energy infrastructure, medical devices, consumer goods, steel manufacturing, beauty products, and food and beverage.

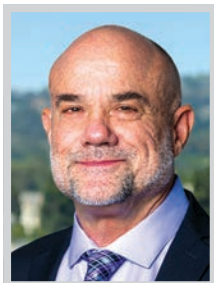


# Where local expertise meets extraordinary service.

Citizens Private Bank is here. Let us focus on your wealth, so you can focus on your world.

For more information, visit [citizensbank.com/privatebank](https://citizensbank.com/privatebank)  
Beverly Hills • 101 S. Rodeo Dr., Suite 440, Beverly Hills, CA  
Manhattan Beach • 200 N. Pacific Coast Highway, Suite 1200, El Segundo, CA



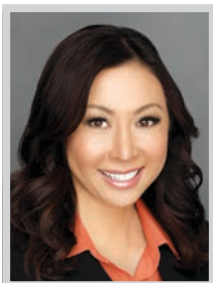


## CHRISTOPHER CARICO

Partner  
Ervin Cohen & Jessup LLP

Christopher D. Carico is a distinguished partner and co-chair of the Estate Planning, Probate, and Trusts Department, recognized for his exceptional expertise in estate and trust law. A board-certified specialist with 35 years of experience, Carico represents families, fiduciaries and beneficiaries, skillfully navigating both estate planning and complex litigation. His dual expertise allows him to craft robust planning instruments and effectively challenge others' documents when necessary.

Carico handles high-stakes disputes, including will and trust contests, fiduciary litigation, and financial elder abuse actions, while also advising clients on advanced planning strategies such as family limited partnerships, intentionally defective grantor trusts, and life insurance trusts. Frequently appointed by courts as an expert, he provides authoritative guidance in probate matters, trust reformation, fiduciary accounting, and breach-of-duty actions.



## CYNDIE CHANG

Managing Partner, Los Angeles Office; Partner  
Duane Morris LLP

Cyndie Chang advises and partners with clients to enforce their rights, mitigate exposure and litigate their commercial disputes involving complex, class action or B2B disputes involving contracts, licensing, products liability, product safety and recall, unfair competition, fraud, construction defect, trademarks, trade secrets, California Proposition 65, COVID-19 and real estate. She also advises insurance companies on environmental, asbestos, toxic tort and commercial general liability insurance coverage claims.

Chang's services have spanned various industries, including manufacturing, retail, fashion, consumer goods, financial services and banks, healthcare, insurance, cannabis, education, energy, utilities, transportation, auto and telecommunications. Chang has represented many public and private businesses, including Fortune 500 companies, and has obtained favorable results serving as first chair in state and federal bench trials, jury trials and arbitration.



## VICKI CHOU

Partner  
Hueston Hennigan LLP

Vicki Chou is an accomplished trial lawyer and a key member of Hueston Hennigan's Trials and White Collar and Investigations teams. She has successfully tried 11 cases as lead counsel and won each of her appeals before the US Court of Appeals for the Ninth Circuit.

A former AUSA in the Central District of California, Chou represented the US in hundreds of criminal cases involving computer and internet fraud, intellectual property, money laundering, bank fraud, tax fraud and racketeering offenses. Today, Chou routinely leads or serves as a key member of teams handling the firm's most complex, highest-profile matters, including successfully defending Amazon and three Amazon executives against a historic FTC lawsuit targeting its Prime membership.



## TANJA L. DARROW

Shareholder; Co-Chair, Litigation  
and Trials Practice Group  
Littler

Tanja L. Darrow is a highly accomplished litigation attorney whose career is distinguished by excellence, leadership, and a deep commitment to justice and equity. As co-chair of Littler's Litigation and Trials Practice Group and a core member of the Complex Litigation and PAGA Practice Group, she leads strategy on some of the firm's most high stakes labor and employment matters. Her practice spans wage and hour disputes, discrimination and harassment claims, and compliance with key employment statutes including Title VII, the ADA, and the FMLA.

Darrow is widely regarded for her courtroom strength. She has served as lead counsel in hundreds of cases and has consistently secured complete defense verdicts in every trial she has conducted.



## EMIL DAVTYAN

Founder; Managing Attorney  
D.Law

Emil Davtyan founded D.Law in 2015. Now, his team of 150-plus lawyers and staff have helped hundreds of thousands of California workers recover over \$1.5 billion from their employers. To date, the firm has helped pursue over 6,000 cases.

Davtyan's ability to be adaptive is a huge factor in his success. In 2020, there was an unprecedented level of employment disruption as a result of the pandemic caused by COVID-19. Davtyan and his team have masterfully maneuvered around the daily changes to ensure workers in need don't get the "short end of the stick." Davtyan Law Firm has fielded over 70,000 inquiries for potential cases during the pandemic alone. Davtyan has meticulously cultivated a company culture that re-imagines the modern law firm to provide a welcoming atmosphere.



## MICHAEL De VRIES

Partner  
Kirkland & Ellis LLP

Mike De Vries is consistently lauded as one of the country's foremost IP practitioners. His nearly 20-year legal partnership with fellow Kirkland partner Adam Alper has yielded extraordinary results in jury trials and litigation more generally, including in critical industries as diverse as semiconductors, telecommunications, computer hardware, pharmaceuticals, biotechnology and life sciences. The pair's winning streak has led them to secure more than \$2.5 billion in verdicts and publicly reported settlements since 2018.

Recently, De Vries added three consecutive jury trial victories to a nine-trial winning streak, including one of his most consequential wins to date. He and Alper achieved a resounding victory for Samsung and its manufacturer Applied Materials, resulting in what is believed to be the largest defense-side patent win in US history.



## RITA DIAZ

Partner  
Hahn & Hahn LLP

Rita Diaz focuses her practice on estate planning and advising trustees and beneficiaries through trust and probate administrations, especially those that are, or could be, contentious. She represents clients in various trusts and estate litigation matters, including breach of fiduciary disputes and trust contests. Diaz takes a comprehensive and result-driven approach to disputes. Her experience in estate planning, administration and litigation gives her a global perspective critical to avoiding, abating and resolving disputes. Diaz also counsels employers on a variety of matters, including discrimination, leaves of absence, policies, and wage and hour issues.

From early on in her career, Diaz has been involved in the American Bar Association's Young Lawyers Division as well as the Los Angeles County Bar Association.



## JEFFREY DINTZER

Partner  
Alston & Bird

For more than 37 years, Jeffrey Dintzer has worked on precedent-setting cases affecting the way industries, such as oil & gas, do business in California. A leading attorney both in California and nationwide, Dintzer has represented energy, manufacturing, and defense industry clients in complex environmental, water rights, toxic tort, land use, inverse condemnation and class action litigation; his deep expertise in hydrogeology, toxicology, epidemiology, toxicology and other life sciences has played a prominent role in sophisticated cases concerning ecological personal injury and property damage claims, particularly those involving emerging chemicals such as PFAS and perchlorate.

As one of the deans of the environmental bar in California, Dintzer represents California's major oil and gas interests on upstream matters, helping them navigate the growing complexity of the state regulatory landscape.

**ABB** AMERICAN  
BUSINESS BANK

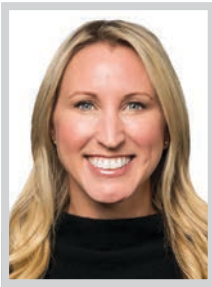


**YOUR PRACTICE.  
OUR EXPERTISE.**

American Business Bank has ten offices  
in strategic locations including:  
Los Angeles, Irvine, Anaheim, Torrance, Woodland Hills,  
Ontario, Corona, Downtown Riverside,  
Long Beach and San Diego



[www.americanbb.com](http://www.americanbb.com)



## DARCY DOWN

Partner  
Baker McKenzie

After spending eight years in Baker McKenzie's Chicago office, Darcy Down relocated to the firm's Los Angeles office to develop and grow the transactional practice in Los Angeles. Currently, she is an M&A partner and key leader in the Los Angeles and wider California transactional group. Down's leadership was instrumental during the recent addition and integration of the elite transactional team from MTO to the Baker McKenzie Los Angeles practice. With the new team's arrival, Baker McKenzie's California Transactional Group comprises more than 50 lawyers, making it among the largest transactional legal teams in California.

Over the last 14 years at Baker, Down's practice has covered a wide range of transactional matters, including domestic and cross-border mergers, carve-outs, spin-offs, pre-transaction restructurings and post-acquisition integrations and reorganizations.



## JOSHUA DRISKELL

Managing Partner  
Lagerlof, LLP

Joshua leads with both exceptional legal expertise and transformative leadership. As chair of Lagerlof's Private Client Services Department, he has built a practice focused on complex estate planning, wealth transfer, business succession, post-death administration, and fiduciary litigation, advising high-net-worth individuals, business owners, investors, and family offices on strategic and tax-efficient solutions.

Driskell's success stems from his ability to simplify intricate legal issues and deliver meaningful results for clients while fostering a culture of excellence at Lagerlof. Under his leadership, the firm has continued to grow and innovate, and he has been widely recognized for his contributions. Beyond his professional accomplishments, he has championed community engagement. He serves on the boards of the Pasadena Museum of History, Leadership Pasadena, and the Pasadena Fire Foundation.



## ROSE EHLER

Partner  
Munger, Tolles & Olson LLP

Rose Ehler is an experienced litigator, focused on high-stakes copyright and trademark disputes for entertainment and other industry clients, particularly on issues of evolving technology. She represents the world's biggest companies and is widely recognized within California's legal community as a leading voice in intellectual property law. She has earned a reputation among peers and clients alike for handling cutting-edge, high stakes IP matters with exceptional skill and professionalism and has been honored for the game-changing outcomes.

Known for her thought leadership and engagement in the broader IP community, Ehler is sought out for her insight on complex copyright and technology disputes and contributes meaningfully to professional organizations and industry discussions. Her integrity and influence have solidified her standing as one of the top intellectual property lawyers in California.



## STEVEN ELIE

Co-Managing Partner  
Musick, Peeler & Garrett LLP

Musick Peeler co-managing partner Steven J. Elie's professional experience spans dozens of actions in California state and federal courts involving groundwater contamination, hazardous substances, and high-exposure tort claims, as well as disputes arising under landmark environmental statutes and local regulatory regimes. He has served as lead trial counsel in complex, multiparty litigation and administrative actions, navigating cases that demand technical mastery, strategic discipline, and credibility with courts and agencies alike. In parallel, his insurance practice, which covers primary, excess, and umbrella policies, has guided insurers through high-risk coverage disputes.

Elie's leadership has had a direct and lasting impact on the firm's organization and clients. As outside general counsel to mid-size companies, he has become a trusted advisor, guiding organizations through regulatory compliance, remediation, governance, and growth.

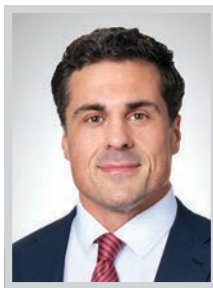


## ROBERT ELLISON

Partner, Los Angeles Litigation & Trial Department,  
Complex Commercial Litigation Practice  
Latham & Watkins LLP

Robert Ellison, a member of Latham & Watkins' Litigation & Trial Department and the Complex Commercial Litigation practice, advises clients in the areas of real estate, entertainment, sports, and media, and general commercial litigation. Ellison has successfully represented clients ranging from public companies, real estate developers and firms, private equity-backed portfolio companies, and sports franchises to leading internet, entertainment, and emerging companies. Ellison, a seasoned trial lawyer, has first chaired numerous successful arbitrations.

Ellison currently serves on Latham's Ethics Committee, and he previously served on the firm's Recruiting and Training & Career Enhancement Committees. He routinely serves on the faculty for the firm's trial advocacy training for litigation associates and mentors numerous associates in the Los Angeles office.



## ADAM FEE

Partner, Complex Commercial Litigation and White Collar Defense, Regulatory and Investigations Practices  
Weil, Gotshal & Manges LLP

Adam Fee is a first-chair trial lawyer and former federal prosecutor whose career has placed him at the center of some of the most complex and closely watched civil and criminal matters in the country. A partner in Weil's Complex Commercial Litigation and White Collar Defense, Regulatory and Investigations practices, Fee represents global financial institutions, multinational corporations, senior executives, and public officials in their most consequential disputes.

His recent work includes acting as lead counsel in the two highest profile securities fraud prosecutions in the country, defending two major Middle Eastern media companies in high-stakes defamation and hacking litigation, and guiding a sitting US Senator through FARA and corruption charges in the Southern District of New York.

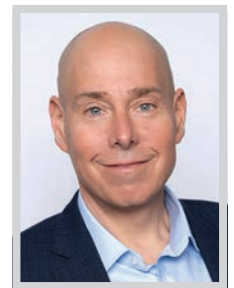


## DIANA FEINSTEIN

Partner  
Gibson, Dunn & Crutcher LLP

Diana M. Feinstein, a partner in the Century City office of Gibson, Dunn & Crutcher, stands as a preeminent figure in the landscape of white-collar defense and complex litigation. Her practice is defined by a sophisticated mastery of high-stakes matters, regularly advising corporations, boards, and senior executives through the most daunting legal challenges brought by the Department of Justice, Securities and Exchange Commission, Consumer Financial Protection Bureau, and the Federal Trade Commission.

With a dual expertise in both internal investigations and enforcement matters, Feinstein has become an indispensable strategist for clients navigating parallel proceedings where criminal, civil, and regulatory exposures intersect. Feinstein's versatility allows her to successfully represent clients in a vast array of complex disputes, including consumer class actions and high-value commercial litigation.



## MILES FELDMAN

Founding Partner  
Raines Feldman Littrell LLP

Miles Feldman is a founding partner of Raines Feldman Littrell LLP. With more than 80 lawyers, Raines Feldman Littrell LLP is one of the preeminent business law firms in Los Angeles, with additional offices in New York, Chicago, and Costa Mesa. Feldman runs the Trials, Litigation and Dispute Resolution department of the firm with more than 15 litigators.

A seasoned trial lawyer, Feldman has nearly three decades of experience handling hard fought and often high-profile cases through trial and appeal, as well as in numerous arbitration forums. Prior to launching Raines Feldman Littrell LLP more than 14 years ago, Feldman was a partner with two of Los Angeles' most prominent business litigation firms. Feldman regularly gets results in cutting-edge litigation disputes for businesses in technology, media and finance.

---

# HUESTON HENNIGAN LLP

---

**Congratulations**

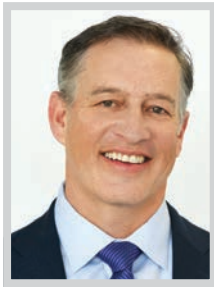


## **VICKI CHOU**

**2026 Top 100 Lawyers**

*—Los Angeles Business Journal*

---



### MARC FENSTER

*Chair, Patent Litigation Department;  
Co-Chair, Litigation Department  
Russ August & Kabat*

**M**arc Fenster is chair of patent litigation at Russ August & Kabat, a practice group he started in 2003. Under his leadership, RAK's patent group has grown to approximately 30 lawyers and has been one of the top firms representing patent holders for over a decade. Fenster has served as lead trial counsel in over 15 jury trials for patent holders, obtaining jury verdicts of infringement in damages in all but one of them.

Fenster also acts as a mentor to young lawyers at RAK, and is a long-standing member of the USC IP Institute Board. RAK has an active and regular pro bono practice in which Fenster is assisting with handling a trade secret case pro bono for a former pro se client.



### GREGORY FISHMAN

*Shareholder; Co-Chair, Global Real Estate Practice;  
Co-Managing Shareholder, Los Angeles Office  
Greenberg Traurig, LLP*

**G**reg Fishman stands as a meaningful force in commercial real estate law, exemplifying a combination of servant leadership, dedication to clients, and deal-making prowess. As co-chair of Greenberg Traurig's 700-lawyer-plus global Real Estate team and co-managing shareholder of the firm's Los Angeles office, Fishman orchestrates transactions that reshape skylines, redefine markets, and revitalize communities.

Fishman's practice focuses primarily on representing public and private real estate companies, institutional investors, investment advisors, and financial institutions in their real estate matters involving all property types. What sets Fishman apart isn't simply the magnitude of his deals, but his philosophy of servant leadership that permeates his work. He has played a key role in strategically growing the firm's Real Estate Practice into a regional and national powerhouse.

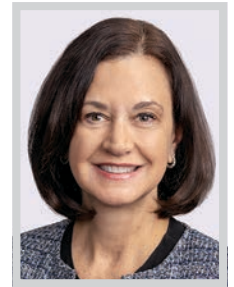


### CHRISTINE FITZGERALD

*Managing Partner, Los Angeles Office; Lead Partner,  
Real Estate Investment and Finance – West Coast  
Katten*

**W**hen Christine Fitzgerald was tapped last year by Katten's top leadership to join their ranks as managing partner of the firm's California offices, she was serving exceptionally on the firm's executive committee and as Real Estate Investment and Finance lead partner – West Coast, where she continues to model strong, effective leadership even as she guides her lender clients in sophisticated real estate finance transactions that in many cases have helped change the face of LA and, by extension, California.

Her move to managing partner was a full circle moment as she succeeded the mentor who originally recruited her to Katten from Loyola Law School. Now, Fitzgerald helms the LA office, plus the West Coast operations of Katten's real estate practice.



### YVONNE ARVANITIS FOSSATI

*Principal; Los Angeles Office Litigation Manager  
Jackson Lewis P.C.*

**Y**vonne Fossati is a highly respected employment law attorney with 35 years of experience; she is the Los Angeles Office litigation manager at the preeminent national workplace law firm, Jackson Lewis. She was recruited to Jackson Lewis based on her deep employment law knowledge and significant trial experience, quickly establishing herself as a trusted litigator.

Fossati represents employers in single-plaintiff and class action litigation, while also providing strategic advice and counsel. Her practice spans a wide range of industries, with a particular emphasis on manufacturing, healthcare and hospitality. Her lasting client relationships – many spanning more than 15 to 20 years – reflect her skill, leadership. A member of the firm's senior trial practice team, Fossati is routinely called upon to handle complex, high-exposure matters.



### CHRISTOPHER FROST

*Founding Partner  
FROST LLP*

**C**hristopher Frost is FROST LLP's founding and name partner. In 25 years as a Los Angeles-based trial litigator and counselor for businesses, executives, and creative artists, he has developed a reputation for fighting fiercely for his clients. Frost co-founded FROST LLP as an alternative to BigLaw service models, billing practices, and conservative and hierarchical corporate culture.

Starting with four lawyers in a Westwood office building in June 2023, the now national litigation-driven firm (offices in Los Angeles, New York, Nashville, Phoenix, and most recently Silicon Valley) boasts 40+ lawyers. The firm recently added two new practice areas: full-service intellectual property, as well as white collar, investigations, and compliance. Frost and his team regularly face BigLaw opposing counsel in complex business matters including bet-the-company litigation.

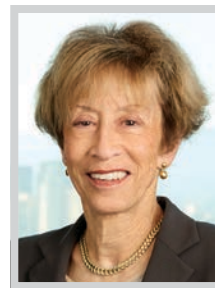


### MICHAEL GARFINKEL

*Partner  
Venable LLP*

**A**veteran of the entertainment and media industry, Michael Garfinkel returned to Venable in 2023, which was a pivotal moment in his long legal career in LA. Garfinkel, who previously worked at the firm from 2007 to 2011, is an entertainment and media litigator with more than 30 years of experience.

Garfinkel represents studios, production companies, talent agencies, advertising agencies, and artists in matters involving intricate industry-specific agreements, trademarks, copyright and right of publicity disputes, trade secrets, and defamation. He also represents a variety of clients in commercial litigation, including limited liability company and partnership disputes and consumer class action defense. In November 2024 at the ADL Los Angeles Gala, Garfinkel and his wife Stacey were once again recognized by the Anti-Defamation League as 2024 Distinguished Leader Honorees.

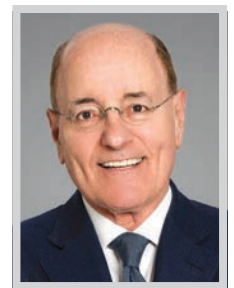


### PATRICIA GLASER

*Partner; Chair, Litigation Department  
Glaser Weil*

**P**atricia Glaser is head of Glaser Weil's Litigation Department and tops the short list of trial attorneys in the nation sought after for high-stakes litigation. Respected as a business trial lawyer, she also provides general legal counsel to publicly and privately held companies across a range of industries, including entertainment, intellectual property, real estate, banking and securities. Her clients include Fortune 500 companies, major studios, real estate investors and developers, financial institutions, and high-profile entertainers and public figures.

Her recent high-profile work includes her representation of Simon Wiesenthal Center and Rabbi Abraham Cooper in successfully defending a \$4.8 billion defamation lawsuit brought by The Nation of Islam and its leader, Minister Louis Farrakhan.



### MICHAEL GOLD

*Partner; Chair, Cybersecurity and Privacy Group  
Jeffer Mangels & Mitchell LLP*

**M**ichael Gold is chair of JMM's Cybersecurity and Privacy Group. His clients include Fortune 100 companies and some of the best-known brands in the world. He counsels clients on a wide variety of matters, including AI deployment, risk, privacy and security issues, compliance with domestic and international privacy laws, data breach response, regulatory investigations, crisis management, development of computer-based information retention systems, and forensic investigations of computer systems and large networks.

Gold's clients rely on his advice regarding emerging technologies – principally AI and blockchain – and how these technologies impact their businesses. He is known for his deep understanding of technology and has spoken at industry and professional programs about the unique privacy, governance, and information security challenges presented by AI.

# TAKE CONTROL OF YOUR **RISK CONTROL.**



PROPERTY &  
CASUALTY



EMPLOYEE  
BENEFITS



RISK  
CONTROL



CLAIMS  
MANAGEMENT



**POMS**

RISK CONTROL  
& INSURANCE  
SMARTER INSURANCE  
FOR SMARTER BUSINESS

[POMSASSOC.COM](http://POMSASSOC.COM)



### MICHAEL GOTTLIEB

*Chair, Crisis Management Group;  
Co-Chair, Media & First Amendment Practice Group;  
Member, Executive Committee  
Willkie Farr & Gallagher LLP*

Michael Gottlieb, chair of Willkie's Crisis Management Group and co-chair of the Media & First Amendment Practice Group, and Executive Committee member, is one of the nation's preeminent litigators, and one of the world's go-to lawyers for matters involving brand and reputational damage, including cases presenting novel First Amendment issues. He has developed a reputation for handling some of the most sensitive and complex crisis management situations, including matters on the front page as well as highly sensitive and confidential investigation in bet the company matters.

Gottlieb has built a distinguished practice guiding clients through some of the most challenging legal landscapes in the country where they are simultaneous, multi-front government investigations paired with high-stakes parallel litigation.



### SAMANTHA GRANT

*Partner  
Reed Smith*

Samantha Grant is a partner in Reed Smith's Century City office and is a go-to litigator for national and global companies in administrative, arbitration, and trial proceedings. She leverages her analytical and strategic skills to deliver exceptional results in litigation of discrimination, harassment, retaliation, wage and hour, breach of contract, fraud, defamation, trade secret, and unfair competition cases, among others.

Grant has extensive experience in many different industries, including the entertainment, aerospace/defense contractor, hospitality, health care, and retail industries. Her deep industry knowledge coupled with her awareness of her clients' businesses make her particularly adept at proactively advising her clients on litigation avoidance strategies and conducting workplace investigations and at being an effective litigator while minimizing business disruption.



### ANTON HANDAL

*Partner  
Munck Wilson Mandala*

Anton (Tony) Handal is an exceptional intellectual property litigator and partner at Munck Wilson Mandala. With more than 40 years of high-stakes litigation experience in Federal and State Courts, Handal has proven himself to be a leader in navigating complex business disputes across a broad spectrum of intellectual property matters. His experience spans trademark infringement, product liability, trade secrets, breaches of fiduciary duty, partnership break-ups, data breaches, and Lanham Act violations.

Handal has tried over 100 matters and served as lead counsel in more than 170 patent litigation cases, demonstrating both his deep knowledge of intellectual property law and his remarkable courtroom presence. In 2025, Handal secured two significant victories before the United States Court of Appeals for the Ninth Circuit.



### YAKUB HAZZARD

*Chair; Partner  
Mitchell Silberberg & Knupp LLP*

Yakub Hazzard is the chair of Mitchell Silberberg & Knupp and a nationally recognized entertainment and media litigator with decades of experience handling high-profile disputes involving intellectual property, right of publicity, privacy, profit participation, breach of contract, and complex commercial disputes. He began his career at MSK in the 1990s, developing his entertainment litigation practice as the firm was representing the Recording Industry Association of America in the Napster dispute.

Hazzard has represented leading artists, studios, record labels, video game companies, and global entertainment businesses including Berry Gordy, the Ray Charles Foundation, Incubus, Weezer, NBCUniversal, Universal Music Group, Starz Entertainment and Sony Music Entertainment in high-stakes matters. At NBCUniversal, his most recent role prior to returning to MSK, Hazzard oversaw all copyright, trademark and general litigation matters.



### DAVID HERNAND

*Partner  
Simpson Thacher & Bartlett LLP*

David Hernand joined Simpson Thacher in 2024, bring decades of experience advising on high-profile M&A transactions and a record of representing marquee clients in transformative deals. Hernand advises clients across the entertainment, media, technology and sports industries, and he is regularly recognized by leading directories and trade press for complex transactions in these sectors.

Since joining in Simpson Thacher, Hernand has continued advising on high-profile matters, including recently representing Moelis & Company as financial advisor to Netflix in its announced \$82.7 billion acquisition of Warner Bros. Discovery. The landmark deal will bring together two entertainment juggernauts. He also led the firm's representation of a substantial investor in Lyric's acquisition of the music catalog of The Weeknd for nearly \$1 billion.



### ZENA HO

*Partner  
McDermott Will & Schulte LLP*

Zena Ho is a real estate partner at McDermott Will & Schulte with a strong track record advising clients on sophisticated commercial real estate transactions, including acquisitions, dispositions, financings, joint ventures, and development projects across multiple asset classes. She frequently handles "first-impression" matters for new real estate clients, earning their trust by quickly understanding business objectives and delivering practical, solutions-oriented advice.

Ho is often called upon by other practice areas to support complex corporate transactions involving significant real estate components, reflecting her cross-disciplinary expertise. She has overcome challenges related to market volatility by remaining adaptable, detail-oriented, and client-centric. In addition to serving on key firm leadership committees, Ho informally mentors associates and collaborates closely with partners across the firm.



### WILLIAM JACKSON

*Partner  
Holland & Knight*

Bill Jackson stands out for elevating the practice of real estate law in ways that extend far beyond individual transactions. A highly accomplished real estate attorney whose career reflects more than two decades of leadership, innovation, and impact in complex real estate joint venture and financing transactions, he brings a rare combination of technical fluency, commercial awareness, and the ability to guide clients through sophisticated, multistakeholder environments with clarity and confidence. His judgment is trusted by institutional investors, real estate fund sponsors, developers, and public sector stakeholders alike as he anticipates challenges, identifies opportunities, and designs solutions.

His work directly strengthens the firm's national real estate practice, enhances its institutional investor relationships, and contributes to the growth of transformative real estate projects across the country.



### ARWEN JOHNSON

*Managing Partner, Los Angeles Office  
King & Spalding*

Arwen Johnson is a distinguished trial lawyer who combines an exceptional litigation practice with her role as managing partner of the firm's Los Angeles office. She represents some of the nation's leading entertainment companies in high-profile idea theft and copyright infringement trials and arbitrations, advises companies in trade secrets disputes involving their most valuable innovations, and defends public companies in complex class action and commercial litigation. Across all matters, clients turn to Johnson for her strategic judgment, courtroom strength, and ability to deliver results in their most challenging cases.

Johnson has secured a series of significant victories for clients in recent years. Most notably, she led the team that achieved a complete arbitration victory for Netflix in the widely publicized dispute Rinsch v. Netflix.



# KEEP ON WRITING COMEBACK STORIES

We see our success in the lives we help turn around. For us, winning comes from the many futures returned and families made whole. That's why, from performing over 2,700 heart transplants to the first human bladder transplant, our story is about more than breakthroughs. It's about all those we help to write more chapters of their own.

**UCLA** Health

Keep on rising



### TEDDY KAPUR

Partner

Pachulski Stang Ziehl & Jones LLP

Teddy Kapur, partner at Pachulski Stang Ziehl & Jones LLP, is widely regarded as one of the most active restructuring attorneys in America, frequently recognized for his contributions to Southern California's law, business and civic community. As a partner at the nation's largest corporate restructuring boutique, Kapur is actively involved in the most high-profile insolvencies in which hundreds of millions of dollars are often at stake, including, most recently, the chapter 11 bankruptcies of Kal Freight, Noble House Home Furnishings, FTX, Vital Pharmaceuticals, and Oroville Hospital.

Kapur's recent case leadership includes representing Monster Beverage Corporation in its acquisition of substantially all of the assets of Vital Pharmaceuticals, Inc. (VPX), the maker of Bang energy drinks, for \$362 million.



### AMY KARNIKIAN

Senior Counsel

Crowell & Moring LLP

Amy Karnikian is an exceptional leader in aviation law whose career reflects a rare blend of technical acumen, innovative thinking, and client service. Recently promoted from counsel to senior counsel, she has spent more than a decade earning a reputation as a trusted advisor to airlines, cargo operators, manufacturers, investment firms, and emerging technology companies navigating the complexities of commercial aviation. As co-lead of Crowell & Moring's commercial aviation practice, she brings expertise in commercial aviation transactions, regulatory solutions, and asset finance. Karnikian develops creative strategies, streamlines complex operations, and mentors new talent.

Karnikian has been pivotal in several high-stakes engagements for a major e-commerce and technology company's cargo business, including orchestrating the transition of 25 aircraft from one carrier to three new providers.



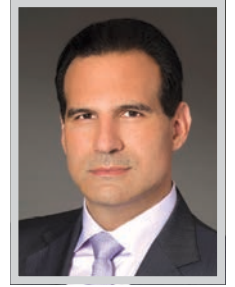
### ARASH KHALILI

Firmwide Co-Chair; Co-Chair, Corporate & Capital Markets Department

Loeb & Loeb

In addition to serving as co-chair of Loeb & Loeb LLP, Arash Khalili is the current co-chair of the firm's Capital Markets and Corporate department and co-founded its renowned Sports practice. He handles high profile and complex transactions in entertainment, media and sports. Khalili has proven himself indispensable for his expertise in structuring high-stakes deals, navigating complex media and entertainment related transactions, and advising on strategic brand partnerships. More than a legal technician, Khalili is a trusted business strategist and advisor to many celebrities and high-profile clients.

Khalili recently represented Big Loud Records, home to recording artists Morgan Wallen, Hardy, Ernest, Miranda Lambert and others, in the sale of a minority stake in Morgan Wallen's master existing recording catalog to Chord Music Partners.



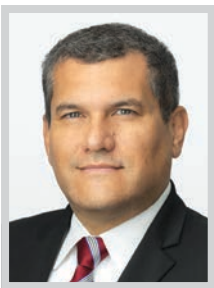
### MEHDI KHODADAD

Partner

Sidley Austin LLP

There are few lawyers making more of an impact in their private equity clients' businesses than Mehdi Khodadad. During the past year, he led over 30 deals with an aggregate value exceeding \$26 billion – an extraordinary accomplishment by any metric. Those deals have included some of the industry's most important private equity deals for his clients, including Clearlake Capital Group, L.P.

Khodadad has advised Clearlake as a principal advisor on its deals and portfolio companies since 2010, and his partnership with Clearlake goes far beyond the traditional lawyer-client transactional relationship. Khodadad is a trusted business and strategic advisor for all of his clients, helping them to navigate challenges and take advantage of opportunities in a constantly evolving market.



### SCOTT KOLLER

Member

Clark Hill

Scott Koller began his legal career in healthcare litigation, where he quickly gained a reputation for his sharp analysis, the ability to remain calm under pressure, and a deep understanding of the operational realities facing large organizations. To those who worked with him at the outset of his career, it's clear he is particularly suited for the fast-response, crisis type of work inherent in dealing with cyber and data privacy breaches.

Koller is now the trusted advisor to clients spanning technology, finance, healthcare, education, media, and the public sector. All rely on his counsel when there's no room for error. His practice centers on guiding organizations through major cybersecurity events involving operational disruption, sensitive data compromise, and intense regulatory scrutiny.



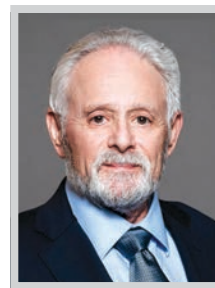
### DANA KRAVETZ

Firm Managing Partner

Michelman Robinson

Dana A. Kravetz is a widely recognized leader among management-side labor and employment attorneys in LA and beyond. He is the trusted, go-to advisor for many of the country's most prominent hospitality, entertainment and brand-sensitive employers; clients who turn to him when legal exposure, reputational risk, and operational disruption are all on the line. Kravetz's direct impact on clients is clear: he defends and resolves complex wage-and-hour and PAGA matters, guides employers through high-stakes employment disputes, and helps executive leadership teams make decisive moves with confidence.

Over the past several years, Kravetz has served as lead counsel in significant matters involving nationally watched class actions and sophisticated multi-front litigation. Kravetz is known for aggressively protecting clients from precedent-setting outcomes and restoring defensible valuations grounded in facts and law.



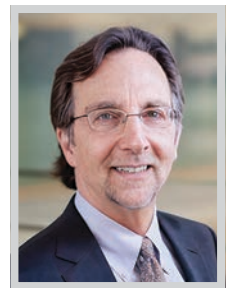
### BARRY KURTZ

Chair, Franchise and Distribution Practice Group

Lewitt Hackman

Barry Kurtz has built a distinguished five-decade career by using his rare, multi-faceted experience as an attorney, franchisor executive, and franchisee developer to help clients realize professional success and advancement. Kurtz serves as chair of Lewitt Hackman's Franchise and Distribution Practice Group. A certified specialist in franchise and distribution law, as designated by the State Board of California Board of Legal Specialization, Kurtz is known for staying ahead of legal and regulatory developments to ensure clients are always equipped with the most current guidance.

Throughout his career, Kurtz has navigated clients through the full franchise lifecycle, including expansion, compliance, financing, mergers, disputes, and operational system design. His counsel has helped brands grow sustainably while preserving strong franchisor/franchisee relationships.



### DAVID LASH

Managing Counsel, Pro Bono and

Public Interest Services

O'Melveny & Myers LLP

When David Lash joined the international law firm of O'Melveny & Myers LLP, he became the firm's first full time pro bono professional attorney. As the managing counsel for Pro Bono and Public Interest Services, Lash was the first full time pro bono professional for any firm west of Chicago. He served as president of the Association of Pro Bono Counsel where he initiated and crafted a nationwide pro bono program along with then Vice-President Biden.

Today, Lash is the leading pro bono professional in Los Angeles and a national leader. In the aftermath of the murder of George Floyd, he was one of the founders of the Law Firm Antiracism Alliance, which now has 300 member firms all working together to combat systemic racism in the law.



# C-Speak®

The Language of Executives

Go behind the scenes on business with **PNC C-Speak®**, **The Language of Executives**, a podcast amplifying the voices of innovative CEOs in Los Angeles.

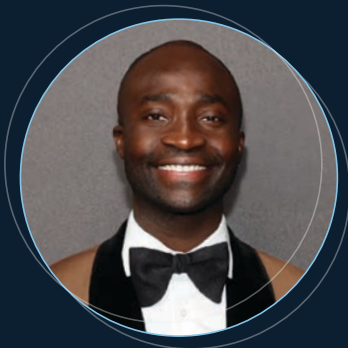
LISTEN + SUBSCRIBE HERE



amazon music



iHeart PODCASTS



**WEMIMO ABBEY**  
Co-Founder & Co-CEO  
Esusu Inc.



**WILLOW BAY**  
Dean, USC Annenberg School for Communication and Journalism; Controlling Owner, Angel City Football Club



**LOREN CASTLE**  
Founder & CEO  
Sweet Loren's



**STEPHEN CHEUNG**  
President & CEO  
LAEDC; World Trade Center Los Angeles



**ALLYSON FELIX**  
Co-Founder & President, Saysh  
Co-Founder, Always Alpha



**SARAH HARDEN**  
CEO, Hello Sunshine  
CEO, Candle Studios



**HENRY HERNANDEZ**  
President & CEO  
Inter-Con Security



**ALEX ISRAEL**  
Co-Founder & CEO  
Metropolis



**KATIE KOCH**  
President & CEO  
The TCW Group



**CANDACE NELSON**  
Co-Founder,  
Sprinkles & Pizzana  
NYT Bestselling Author;  
Guest Shark



**NATE PATENA**  
Co-Founder & CEO  
DrinkPAK



**RAUL PORTO JR.**  
President  
Porto's Bakery & Café



**EVERETT SANDS**  
President & CEO  
Lendistry

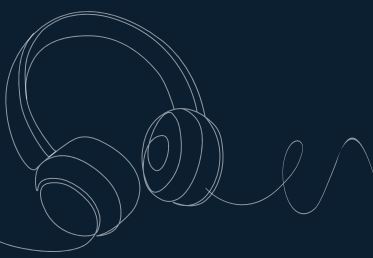


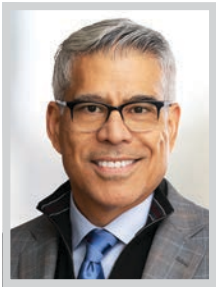
**JAMIE SIMINOFF**  
Founder & Chief Inventor  
Ring



**JOHNESE SPISSO, MPA**  
President, UCLA Health  
CEO, UCLA Hospital System  
Associate Vice Chancellor  
UCLA Health Sciences

EPISODES AVAILABLE: [LABUSINESSJOURNAL.COM/PODCAST](http://LABUSINESSJOURNAL.COM/PODCAST)



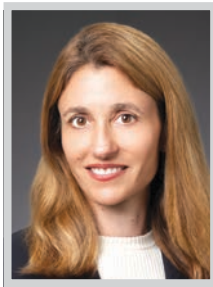


**SALVADOR LAVIÑA**

*Partner; Real Estate Department Chair  
Barnes & Thornburg LLP*

Partner and chair of the Real Estate Department at Barnes & Thornburg, Sal Laviña has built a standout legal career spanning more than three decades in California's dynamic real estate market. His involvement in the business and legal aspects of real estate transactions, coupled with a leadership style rooted in collaboration and mentorship, has positioned him as a respected figure across the industry.

At Barnes & Thornburg, Laviña leads one of the firm's fastest-growing practice groups, driving significant expansion over the past three years. He has established a prolific practice representing institutional investors, private equity firms, family offices, developers, public companies, and ultra-high-net-worth individuals on high-value, complex transactions. His involvement in transactions total nearly \$15 billion over the last decade.



**SUSAN LEADER**

*Global Co-Chair, Complex Litigation and Arbitration;  
Partner  
Paul Hastings LLP*

Susan Leader, co-chair of Paul Hastings' Complex Litigation and Arbitration practice, has added further depth to the firm's litigation department since joining the firm in 2023. She not only has extensive experience leading complex litigation matters for some of the world's largest companies but also sitting first chair when trying those cases before a judge, jury or arbitrator. Since joining the firm, Leader has demonstrated that her litigation capabilities also extend across industries and sectors, obtaining victories for clients in the entertainment, tech, and energy spaces, just to name a few.

What sets Leader apart is not just her role as a first-chair trial lawyer, but her ability to practice in nearly any arena, including most recently a federal criminal trial.



**PHILIPPE LEBEL**

*Partner  
Proskauer Rose LLP*

Phil Lebel is a Los Angeles based partner in Proskauer's Employment Litigation and Counseling Group. He has more than 15 years of experience advising employers across the entertainment and media, retail, healthcare, and financial services industries. Lebel is a trusted advisor to prominent companies that operate under significant public scrutiny and face workplace challenges carrying both legal and reputational risk. He regularly guides clients through high stakes disputes, including complex wage and hour, discrimination, and executive employment matters, delivering practical, business focused strategies. Clients continue to turn to Lebel for their most sensitive and consequential employment issues.

Lebel represents numerous leading entertainment and media companies in connection with employment-related matters.



**JONATHAN LIGHT**

*Managing Partner  
LightGabler LLP*

Jonathan Light has over 40 years of experience in the field of employment law. He co-founded LightGabler in 2011. As the managing partner, Light oversees a team of 24 attorneys and a firm that consults with over 6,000 companies throughout California.

Light has successfully tried a range of cases, including jury and court trials, arbitrations and Labor Commission hearings. Case results include the defense of employers accused of wrongful termination, sexual harassment, race discrimination, wage and hour, and other employment-related matters. He has been lead trial counsel on at least 100 class action and PAGA wage and hour cases. He has also appeared on behalf of employers before the federal EEOC and federal Labor Department, the state Civil Rights Department, the National Labor Relations Board, and others.



# TOP 100 LAWYERS

## 2026

*I'm honored to be recognized among the Top 100 Lawyers by the Los Angeles Business Journal—a distinction that reflects the talent, dedication, and teamwork across our firm.*

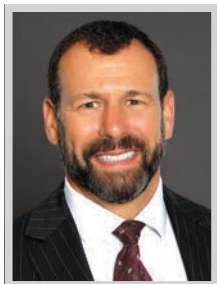
Dan Miller

MILLER | BARONDESS LLP

Trial | Arbitration | Appeals

millerbarondess.com

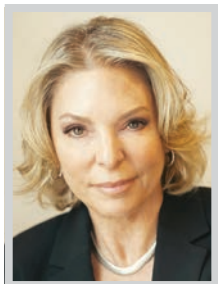




**MICHAEL MALLOW**  
*Managing Partner*  
 Shook, Hardy & Bacon LLP

Shook Los Angeles managing partner Michael Mallow is a highly experienced trial lawyer who has represented clients in class action and complex litigation matters, including cases related to economic product defects, unfair competition, false and deceptive advertising, business torts, privacy, entertainment and intellectual property. He has defended consumer protection actions and investigations initiated by the Federal Trade Commission, the US DOJ, the Consumer Product Safety Commission and the FCC.

Mallow has been at the forefront of representing clients in significant consumer protection matters, including defending the first enforcement action prosecuted by FTC related to the National Do Not Call Registry and securing a major automotive industry victory before the US Court of Appeals for the Tenth Circuit.



**NINA MARINO**  
*Founding Partner*  
 Kaplan Marino, PC

Nina Marino co-founded Kaplan Marino, PC with partner Richard Kaplan in 1998 to create a platform for the firm’s then-burgeoning white-collar practice. Since then, Marino has devoted her practice exclusively to white-collar and complex criminal defense achieving global recognition for her successful representation of individuals and entities.

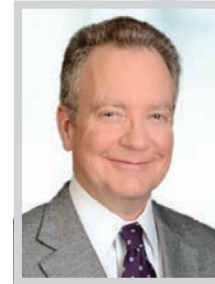
Marino’s leadership at Kaplan Marino has contributed to the firm’s recognition as a 2026 Best Law Firm in White Collar Crime and Criminal Defense in the United States from Best Lawyers, and as a 2025 Most Admired Law Firm to Work For by the Los Angeles Business Journal. Marino is committed to a family-first philosophy, prioritizing a supportive environment and encouraging work life balance. This year, Legal 500 ranked her as Tier 1 for US Elites in White Collar Crimes.



**MICHELLE MCCARTHY**  
*Partner*  
 Nossaman

Michelle McCarthy advises clients of all types – from tax exempt organizations and governmental plans to Fortune 100 companies, regarding every facet of employee benefits law, including the design, structure, implementation, regulatory compliance and administration of retirement, health and welfare benefit plans. With more than 25 years of legal experience specializing in fiduciary, benefits, tax and compliance, McCarthy advises clients from both the private and public sectors and has served as trustee-appointed counsel to some of the largest and highest-profile pension, health and welfare funds in the nation.

McCarthy advises on matters pertaining to federal tax qualification and compliance, fiduciary duties and governance, federal and state tax withholding and reporting and health and welfare plans.



**JAMES MENTON**  
*Partner; Chair, Corporate Restructuring and Bankruptcy Group*  
 Robins Kaplan LLP

James Menton is a partner at Robins Kaplan and chair of the Corporate Restructuring and Bankruptcy Group. His practice focuses on all types of fiduciary disputes, creditor’s rights and remedies, and corporate restructuring and bankruptcy matters. A skilled advisor and litigator, Menton draws upon his extensive professional network to provide clients with strategic resources and solutions in their cases.

Menton has decades of experience in areas that include insolvency-related matters, including complex corporate bankruptcies, distressed-debt litigation and complex collection matters. His experience with respect to distressed corporate situations, secured transactions, and the corporate bankruptcy process forms an integral part of clients’ strategic planning.



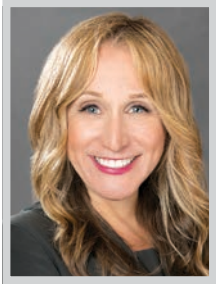
# Lucas Horsfall



“Experience the comfort and security of working with an advisor who truly understands you and your business.”

Advisory | Assurance | Client Accounting Services | Fund Accounting | Trusts and Estates | Transaction Advisory Services | Tax | International Tax

[www.lucashorsfall.com](http://www.lucashorsfall.com)



**DEBRA ELLWOOD MEPPEN**

Senior Litigation Partner; Chair, National Employment Law Practice Group; Women’s Initiative Leader; Co-Managing Partner, Ventura County Office GRSM

Debra Ellwood Meppen is a litigation Partner with 30 years of practice and 24 years at GRSM, where she serves as chair of the national Employment Litigation Practice Group and leads the firm’s Women’s Initiative. Widely regarded as one of Hollywood’s most trusted legal advisors, she is the first call for producers, studio executives, talent, and management teams facing high-stakes employment disputes that threaten major film releases, concert tours, and reputations. Her greatest successes often remain confidential resolved swiftly and strategically before reaching the public eye.

Meppen has overcome the unique challenge of navigating explosive matters in an industry where timing, confidentiality and relationships are paramount.

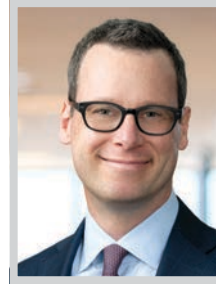


**LISA HELFEND MEYER**

Founding Partner Meyer, Olson, Lowy & Meyers

Lisa Helfend Meyer is a co-founder and senior partner at Meyer, Olson, Lowy & Meyers, LLP, a boutique family law firm. Meyer has been certified as a specialist in Family Law by the Board of Legal Specialization of the State Bar of California since 1989.

For over four decades, Meyer has been a commanding force and trailblazer within the legal profession and specifically the family law community, a successful businesswoman, and a passionate advocate for the rights of children and parents. Meyer provides legal services in all areas of family law, including complex divorces, such as the valuation and division of high asset marital estates, high conflict and complex child custody cases, domestic violence cases, prenuptial and post-nuptial agreements, mediation, and more.



**BRIAN R. MICHAEL**

Partner, Investigations + White Collar Defense Group; Chair, Global Ethics + Compliance Practice Morrison Foerster

Brian R. Michael is a partner in Morrison Foerster’s Investigations + White Collar Defense Group and the chair of the firm’s Global Ethics + Compliance practice. Drawing on more than 25 years of experience as a federal prosecutor, in-house leader, and in private practice, Michael is routinely engaged to represent entities and individuals in high-profile, high-stakes white collar criminal cases, internal investigations, securities and regulatory enforcement matters, complex litigation, and trials.

Michael’s practice also focuses on providing sensitive crisis management and compliance counseling, including on anti-corruption, cybersecurity, FinTech, trade sanctions, ESG, supply chain, and workplace conduct matters.



**DAN MILLER**

Partner Miller Barondess, LLP

Dan Miller, a founding partner of Miller Barondess, is an accomplished trial lawyer with extensive experience representing land developers, homebuilders, lenders, and investment firms in state and federal courts, as well as in arbitrations throughout California and nationwide. Recognized as a top litigator, he excels at crafting tailored case strategies, exemplified by his securing a complete dismissal on summary judgment of a \$4 million finder’s fee claim for a land developer in a \$200 million ocean-front mixed-use development project, and obtaining a complete defense verdict on a \$30 million claim in a real estate partnership dispute involving multiple mixed-use development projects.

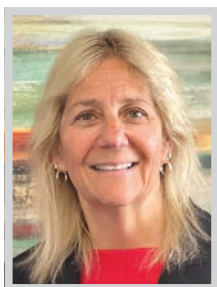
Miller successfully represented the Horn Trust in a high-stakes dispute with a minority owner accused of embezzling \$8 million over four years.



**Congratulations to James Yukevich on being named among the city’s “Top 100 Lawyers.”**

Thank you for your fierce advocacy for our clients and your tireless support for the Los Angeles community.

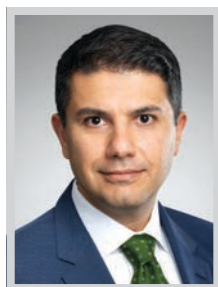




**JANICE L. MILLER**  
*Managing Partner*  
 Miller Haga

Janice L. Miller is the managing partner of Miller Haga and is a highly-recognized legal advisor with over 25 years of experience as an innovative general counsel. She represents the firm's clients in business transactions, real estate leasing, entertainment, intellectual property, licensing, and hospitality. The firm's clients have come to rely on Miller's insightful dispute resolution strategies as a preventive measure to avoid litigation.

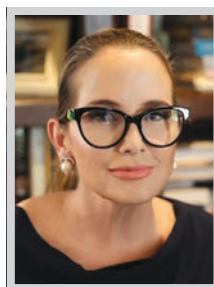
Miller is a noted speaker and panelist at conferences relating to location-based entertainment venues, real estate and leasing, corporate governance, intellectual property and licensing, and emerging areas of the law. Prior to entering private practice, Miller was NBCUniversal's Vice President of Business Affairs for Universal Studios Hollywood and CityWalk. She started her legal career in entertainment litigation, representing celebrities.



**ALI MOJIBI**  
*Partner*  
 Covington & Burling LLP

Ali Mojibi is a partner in Covington's Los Angeles office and a seasoned trial lawyer known for handling high-stakes, business-critical disputes for leading global companies. He represents international corporations and senior executives in complex litigation at the intersection of patent, trade secret, and copyright litigation, employee (scientists and engineers) mobility disputes, retaliation claims involving technical subject matter such as alleged whistleblowing activity by cybersecurity experts, and disputes arising from executive departures and founder breakups particularly involving disputes over IP-ownership and control.

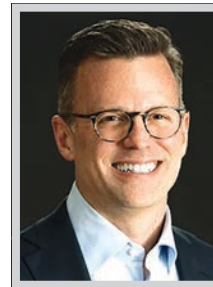
Drawing on a diverse industry practice spanning technology, software, telecommunications, life sciences, and emerging growth companies, Mojibi is trusted by clients to navigate their most sensitive disputes.



**ANN MARIE MORTIMER**  
*Managing Partner, Los Angeles;*  
*Head, Commercial Litigation Practice*  
 Hunton Andrews Kurth LLP

Ann Marie Mortimer stands at the forefront of California's legal field, consistently delivering results in high-stakes, precedent-setting matters across banking, privacy, mass torts, data breach, and climate litigation. Mortimer drives client-centered strategies and industry-forward thinking by leading impactful solutions that deliver tangible value to clients. There are many innovative "firsts" where Mortimer has improved client outcomes and changed the legal landscape or impacted industries including the following:

Mortimer's leadership secured a complete exoneration for defendant Nano Banc in a two-month jury trial (where by contrast plaintiff was awarded \$83.25 million) in a real estate finance suit in *Security National Guaranty, Inc. v. Mahender Makijani, et al.* The jury found Nano Banc not liable.



**JOHN-PAUL MOTLEY**  
*Partner in Charge*  
 Cooley LLP

John-Paul Motley is a standout partner in Cooley's public companies group and one of Los Angeles' leading capital markets and corporate governance advisors. Known for his strong deal sense, business instincts, and exceptional client service, he advises high growth and established public companies and their boards of directors on complex transactional, securities, and governance matters.

Motley serves as trusted outside counsel to prominent companies including Global Infrastructure Solutions, Grindr, LegalZoom, Malibu Boats, Onity Group, SoundThinking, Sportsman's Warehouse, Sweetgreen, Tetra Tech, Veritone, and Willdan. Motley is a partner in Cooley's public growth and established public companies. His deal portfolio reflects depth and breadth. He recently represented Veritone in multiple registered equity offerings and its debt refinancing.



# CONGRATULATIONS

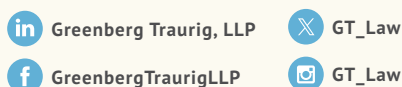
Greenberg Traurig congratulates the *Los Angeles Business Journal's* Top 100 Lawyers 2026, including our own **Mathew S. Rosengart** and **Gregory A. Fishman**.

We are proud to celebrate their leadership, vision, passion, and advocacy.



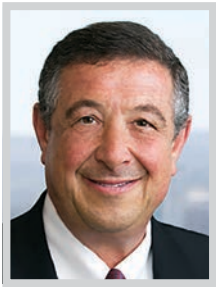
GREENBERG TRAUIG, LLP | ATTORNEYS AT LAW | 3100 ATTORNEYS | 51 LOCATIONS WORLDWIDE\* | GTLAW.COM

1840 Century Park East | Suite 1900 | Los Angeles, CA 90067 | 310.586.7700



Greenberg Traurig is a service mark and trade name of Greenberg Traurig, LLP and Greenberg Traurig, P.A. ©2026 Greenberg Traurig, LLP. Attorneys at Law. All rights reserved. Attorney Advertising. \*These numbers are subject to fluctuation.

**WORLDWIDE LOCATIONS**  
 United States, Europe  
 and the Middle East,  
 Asia, Latin America

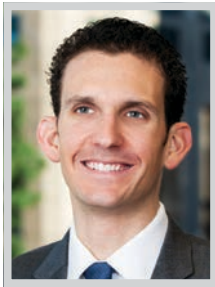


**MARK NEUBAUER**

*Los Angeles Office Managing Shareholder  
Carlton Fields*

Throughout almost a half-century of practice, Mark Neubauer has achieved key litigation victories for some of the world's most well-known companies, protecting them from multimillion-dollar claims. He has tried numerous jury and bench trials in state and federal courts, focusing on sophisticated litigation, including commercial, securities, antitrust, real estate, employment, and entertainment matters.

Neubauer also has a string of landmark appellate opinions he has won in areas like anti-SLAPP and lis pendens. As the founding managing shareholder of Carlton Fields' Los Angeles office, Neubauer was instrumental in establishing and expanding the firm's California presence, bolstering its reputation in the region. Throughout his career, Neubauer has litigated high-stakes cases for some of the world's most prominent companies.



**RICK OFFSAY**

*Partner; Global Co-Chair, Entertainment,  
Sports & Media Practice  
Latham & Watkins LLP*

Rick Offsay is a corporate partner and the global co-chair of Latham & Watkins' Entertainment, Sports & Media Practice. He advises on complex M&A, joint ventures, capital raises, financings, and commercial arrangements across film, television, sports, music, live events, and digital media.

Offsay blends deal-making fluency with a understanding of the rapidly evolving entertainment and media landscape to guide companies and investors on their most consequential deals. He recently led Latham teams advising multiple deals, including Skydance on merging with Paramount to form Paramount Skydance (\$28 billion enterprise value). He also advised Silver Lake, as part of a consortium, in the pending acquisition Electronic Arts for \$55 billion, the largest all-cash sponsor take-private investment in history.

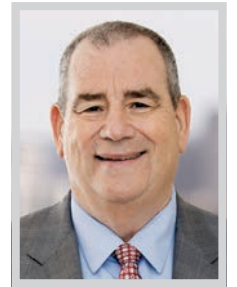


**RICK OLIVAREZ**

*Partner  
Olivarez Madruga Law Organization LLP*

Rick R. Olivarez, founding and managing partner of Olivarez Madruga Law Organization, is widely considered to be one of Southern California's leading legal practitioners. He hired fellow partner and seasoned litigator Tom Madruga and founded the firm of Olivarez Madruga Law Organization, offering specialties in public agency law, labor and employment, real estate development, contract law, environmental compliance, redevelopment, construction law, premises liability, tort law, and legislative advocacy.

Olivarez's innovative leadership and deep expertise in serving his clients have enabled him to develop OMLO into Southern California's premier minority-owned law firm, all the while ensuring that OMLO remains an inclusive, diverse and supportive work environment for its attorneys and staff.



**BRIAN PANISH**

*Founding Partner  
Panish | Shea | Ravipudi LLP*

Brian J. Panish is a founding partner of Panish | Shea | Ravipudi LLP. With four decades of trial experience in plaintiffs' personal injury litigation, his victories include more than 600 verdicts and settlements over \$1 million, more than 100 verdicts and settlements in excess of \$10 million, seven verdicts in excess of \$50 million, and a verdict of \$4.9 billion in a products liability case against General Motors.

Panish is consistently appointed to serve in a leadership role in some of the largest and most high-profile personal injury cases in California and the country. He served as plaintiffs' lead trial counsel in the Southern California Gas Leak Cases, where he led a team of attorneys in obtaining a \$1.8 billion settlement with Sempra Energy.

Congratulations to

**Teddy Kapur**

on being named among the **"Top 100 Lawyers"** in Los Angeles, recognizing his impact in the restructuring industry's most high-profile insolvencies.



PACHULSKI  
STANG  
ZIEHL &  
JONES





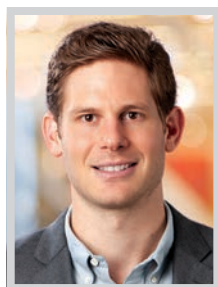
**ALISON PAPPAS**

*Partner*

Crosbie Gliner Schiffman Southard & Swanson LLP

Alison Pappas is a trailblazing leader in the traditionally male dominated field of commercial real estate law. Her technical expertise, client responsiveness and deal making ability has paved the way for other women in the industry.

Over the course of her 25-year career, Pappas has not only delivered outstanding results on some of the most complex real estate transactions in the market, but has also helped open doors and set a powerful example for women rising through the profession. Pappas is now a partner with Crosbie Gliner Schiffman Southard & Swanson LLP (CGS3), based in its Los Angeles office. As a core member of the firm's complex transactions practice group, she is widely regarded as a go-to advisor for sophisticated real estate owners, operators and investors.



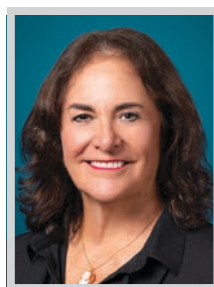
**ERIC PERLMUTTER-GUMBINER**

*Partner*

Greenberg Glusker Fields Claman & Machtinger LLP

Eric Perlmutter-Gumbiner is a partner at Greenberg Glusker and a go-to deal lawyer for founders, high-growth companies, and investors operating at the intersection of consumer, media, entertainment, tech and sports. Over more than a decade, Perlmutter-Gumbiner has built a practice focused on emerging companies, venture capital, private equity, and M&A, frequently serving as outside general counsel to clients navigating constant change-compressed timelines, highly negotiated partnerships, talent-driven IP, and brand risk in the public spotlight.

Perlmutter-Gumbiner combines elite transactional execution with practical, forward-looking judgment: he anticipates issues before they become problems, translates complexity into clear options, and keeps deals moving while protecting enterprise value.



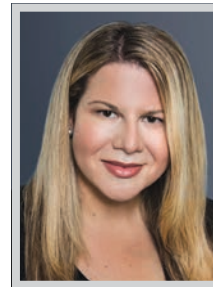
**JILL PIETRINI**

*Partner*

Sheppard

Jill Pietrini is a 38-year veteran in intellectual property litigation, TTAB practice, foreign contentious proceedings, and trademark prosecution worldwide. A respected leader in her field, Pietrini has appeared on the short lists of the top intellectual property lawyers in California and nationally. The cutting-edge nature and impact of Pietrini's work crosses many sectors including the entertainment, motion pictures, insurance, music, apparel, celebrity estates, farming, financial services, marketing and promotion and e-commerce industries.

Pietrini achieves results that shape brand enforcement strategies and deter infringement. She helped deliver Chanel's sweeping jury-trial victory against What Goes Around Comes Around, prevailing on false association, infringement, counterfeiting and false advertising.



**BRONWYN POLLOCK**

*Co-Leader, Global Litigation & Dispute Resolution Practice; Co-Leader, Insurance*

Mayer Brown LLP

Bronwyn Pollock stands among California's most formidable complex civil litigators, entrusted by Fortune 100 companies and multinational corporations to resolve consequential legal challenges that threaten their core business operations. Over her distinguished 25-year career at Mayer Brown, she has built an unparalleled reputation for defending clients in matters where billions of dollars, fundamental business models, and substantial relationships are at stake.

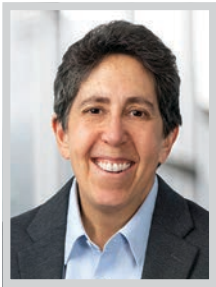
As co-leader of Mayer Brown's global Litigation & Dispute Resolution practice and Insurance Industry group, Pollock has experience across multiple high-stakes practice areas, including complex commercial litigation, class action litigation, mass torts, wildfire litigation, real estate and financial services litigation.

We congratulate **Philip Bonoli** for being named to the *Los Angeles Business Journal's* list of "**Top 100 Lawyers**" and appreciate his impeccable work in high-stakes employment matters.



**BG LAW**  
YOUR COUNSEL MATTERS®

LOS ANGELES | LAS VEGAS | DENVER | BG.LAW | 818.827.9000



**JENNIFER POST**

*Managing Partner, Los Angeles*  
Thompson Coburn LLP

Jennifer Post is the managing partner of Thompson Coburn LLP's Los Angeles office and co-chair of the firm's Emerging Companies practice. For more than three decades, she has advised lenders, investors, and high-growth companies in all stages of corporate growth.

Post's practice sits at the intersection of capital and innovation. She represents premier venture debt lenders, private credit funds, and growth-stage companies in transactions that require sophisticated structuring, disciplined risk assessment, and commercial precision. Her work spans technology, life sciences, consumer brands, fintech, AI-enabled platforms, and regulated industries. Recent highlights include her work representing the senior secured lender in the workout and distressed sale of an international entertainment-technology company.



**SAHARA PYNES**

*Partner*  
Fox Rothschild

Sahara Pynes is a respected partner at Fox Rothschild, a national law firm with more than 1,000 attorneys across the country. Based in the firm's Los Angeles office, she draws on more than 25 years of legal experience to advise a broad range of businesses on how to best comply with state and federal employment laws relating to workplace discrimination, wage-and-hour laws, disability accommodations, family and medical leave, and workforce reductions.

Licensed to practice in both California and New York, Pynes serves as the key contact for the firm's national Employment Counseling, Policy Development & Audits practice. She often partners with women entrepreneurs to build strong human resources infrastructure and employee culture, helping them effectively grow their companies.

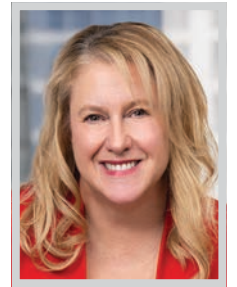


**ASHWIN RAM**

*Partner*  
Buchalter

Ashwin J. Ram is co-chair of Buchalter's White Collar & Investigations Practice and one of Los Angeles' most sought-after attorneys for high-stakes litigation, government investigations, and bet-the-company disputes.

A former federal prosecutor and accomplished trial lawyer with over two decades of experience, Ram has tried over two dozen cases to verdict, resolved matters involving alleged losses exceeding several billion dollars, and argued appeals before the US Court of Appeals for the Ninth Circuit. His practice spans white-collar criminal defense, securities class actions, civil RICO litigation, healthcare fraud, tax controversy, and complex commercial disputes – often at the intersection of multiple forums and overlapping government investigations.



**LAURA REATHAFORD**

*Partner*  
Lathrop GPM LLC

Laura Reathaford is nationally recognized for her expertise in employment litigation. A trusted advisor and respected thought leader, Reathaford has built her career on tackling complex, high-stakes matters that shape California's employment law landscape. She has successfully litigated hundreds of wage and hour class actions and PAGA cases – often "bet-the-company" disputes involving thousands of employees and tens of millions of dollars. Her strategic, pragmatic approach earns the respect of courts, opposing counsel, and clients alike, who consistently return to her for counsel and refer her to peers.

Reathaford's impact extends beyond the courtroom. She is a sought-after authority for media commentary and a prolific author whose insights appear in leading publications such as the Society for Human Resource Management.

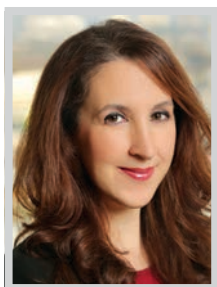
**I swear  
to make  
hard-to-find  
experts  
easy to find.**

**ForensisGroup®**  
**THE EXPERT OF EXPERTS®**

Trusted by more than 20,000 clients.  
Hired in over 30,000 cases.  
No-cost recruiting and consultations.

**Nothing but the Truth®**

(800) 555-5422 ForensisGroup.com



**CHRISTINE REILLY**

*Leader, Consumer Protection and Advertising Practice; Partner Manatt, Phelps & Phillips, LLP*

**L** leader of Manatt’s Consumer Protection and Advertising practice, Christine Reilly is one of the most prominent and sought-after attorneys in this space. Her practice focuses on false advertising, unfair competition, federal and state automatic renewal laws, the Telephone Consumer Protection Act (TCPA) and mini-TCPAs, “junk” fees, drip pricing, false reference pricing and other advertised pricing matters.

Reilly defends companies against class action lawsuits and has the distinction of never having a class certified against a client (excluding voluntary class settlements), solidifying her reputation as the industry’s go-to advisor. She is well-known for resolving cases at early stages and her uncanny ability to resolve and/or litigate complex cases that have evaded resolution.

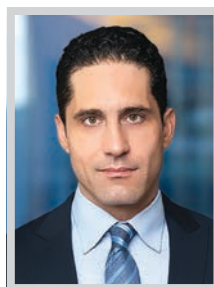


**ELLEN ROBBINS**

*Partner, Litigation Practice Group Akerman LLP*

**E**llen Robbins serves as Akerman’s go-to trial lawyer on the West Coast, handling complex, high-stakes disputes in state and federal courts for public and private companies around the world. She focuses on a broad range of commercial matters, including class action defense, consumer claims, breach of contract, fraud, unfair competition, deceptive pricing, trade secrets, alter ego, misappropriation, securities, product liability, and environmental disputes.

Robbins’ strategic, results-driven advocacy consistently advances her clients’ interests. Her distinguished career features a powerful record of wins that directly protect clients’ business objectives and reputations. Robbins successfully led Akerman’s defense of a consumer products company and showed that the client’s advertising practices complied with applicable laws.

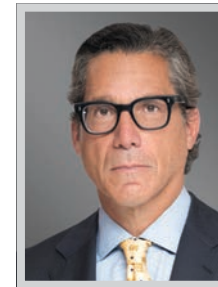


**EVAN ROBERTS**

*Partner Milbank LLP*

**E**van Roberts is a global corporate/M&A partner in the Los Angeles office of Milbank LLP. He concentrates his practice in the areas of private equity, mergers and acquisitions, corporate securities and corporate governance. Roberts represents buyers, sellers, investment funds, banks and institutional investors in a variety of transactions, including multi-layered debt and equity investments, complex business and commercial arrangements, joint ventures, leveraged buyouts and recapitalizations. His experience spans a wide range of industries including technology, consumer products, energy and digital infrastructure, manufacturing, healthcare, international franchises and financial services.

In a constantly evolving landscape for financial sponsors, Roberts’ clients trust him with their most significant, strategic acquisitions and partnerships.



**MATHEW ROSENGART**

*Shareholder; Co-Chair, National Media and Entertainment Litigation Group Greenberg Traurig, LLP*

**W**idely recognized as one of the nation’s preeminent litigators, Mathew Rosengart, co-chair of Greenberg Traurig’s National Media & Entertainment group, is a trusted counselor as well as a litigator. He is routinely relied upon by A-list celebrities, studio heads and Fortune 100 companies – including Meta, Verizon, Pinterest, Eddie Vedder, Britney Spears, Jelly Roll, Ben Stiller, Ben Affleck, Sacha Baron Cohen, Steven Spielberg, Keanu Reeves, Lena Dunham, and Julia Louis Dreyfus – to handle their most sensitive, high-stakes cases.

For leading the landmark fight to free Britney Spears from the shackles of a 13-year conservatorship, which had stripped her of fundamental civil rights and liberties, Rosengart received international acclaim from a wide array of high profile media.

**In Pursuit of Your Perfect Project**



© Ryan Gobuty Photography, LLC

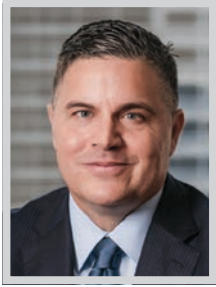


© Ryan Gobuty Photography, LLC

Clune Construction is an employee-owned, national general contractor, providing construction management services for some of the most respected companies in the world. With eight offices across the U.S. and over \$5 billion in secured revenue for 2026, Clune is consistently ranked a best place to work.



**CLUNEGC.COM**



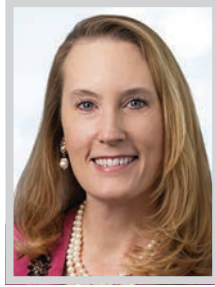
**JASON RUSSELL**

Partner

Skadden, Arps, Slate, Meagher & Flom LLP

Jason Russell is a preeminent litigator whose practice is defined by his ability to lead clients through the most complex, high-stakes disputes in California and across the nation. He is renowned for his skillful handling of some of the most prominent and challenging cases across various industries, including complex class actions. His work demonstrates a deep understanding of the evolving litigation landscape, a practical approach to risk management, and a track record of achieving results in “bet-the-company” cases.

Russell represents a diverse array of clients across federal and state courts nationwide, as well as in international venues. His deep experience spans all facets of litigation, from conducting jury trials and presenting appellate arguments to navigating mediations and arbitrations.



**CHARITY SCHILLER**

Managing Partner

Best Best & Krieger LLP

Charity Schiller, managing partner of Best Best & Krieger LLP helps public and private clients navigate the intricate web of state and federal regulations that shape infrastructure and development projects. Specifically, Schiller assists clients with all aspects of the California Environmental Quality Act, the National Environmental Policy Act and related environmental laws. She has extensive experience with the preparation and adoption of environmental impact reports, environmental impact statements, negative declarations, addenda, exemptions and other environmental documents.

Schiller is also an experienced litigator, successfully defending her clients before administrative boards and trial and appellate courts throughout California. She was appointed as the firm’s managing partner in 2025.



**CLIFFORD SETHNESS**

Partner

Seyfarth Shaw LLP

Clifford “Seth” Sethness stands as one of the most prominent figures in labor and employment law, known for his influential role in shaping workplace litigation and labor-relations strategy across the West Coast. Over the course of his decades-long career, he has become the trusted advisor to major industry players in the shipping, logistics, and automotive sectors, guiding clients through high-stakes disputes and historic labor-relations events. His service with the National Labor Relations Board provides invaluable guidance for his and the firm’s clients.

Sethness is a partner in Seyfarth Shaw’s nationally recognized Labor & Employment department. He has led more than 35 jury trials, bench trials, and arbitration hearings, covering the full spectrum of employment-related claims.



**ROBERT SHERMAN**

Partner; Chair, Entertainment Finance Practice

DLA Piper

DLA Piper partner Rob Sherman has built one of the most dynamic and influential music rights finance practices in the music entertainment industry. Sherman spearheads complex domestic and cross-border financings, securitizations, and M&A transactions for leading music companies, investment platforms, and financial institutions.

In the past year, Sherman led more than \$5 billion in music financings and securitization transactions, advising marquee clients including Concord, HarbourView Equity Partners, Duetti, and City National Bank. His work places him at the forefront of music asset-backed securities, a financing structure that allows music rights holders to leverage predictable royalty stream income into efficient capital while providing investors exposure to durable, high-quality assets.

SHOOK  
HARDY & BACON

ATLANTA | BOSTON | CHICAGO | DENVER | HARTFORD | HOUSTON | JERSEY CITY  
KANSAS CITY | LOS ANGELES | MIAMI | NEW YORK | ORANGE COUNTY | PHILADELPHIA  
SAN FRANCISCO | SEATTLE | ST. LOUIS | TAMPA | WASHINGTON, D.C.

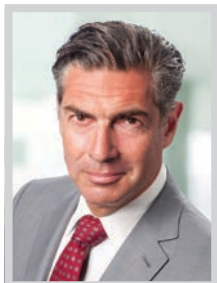
THE CHOICE OF A LAWYER IS AN IMPORTANT DECISION AND SHOULD NOT BE BASED SOLELY UPON ADVERTISEMENTS.

**Congratulations!**

**Ashwin Ram**  
Partner

SELECTED AS A  
**2026 TOP 100 LAWYER**  
BY THE LOS ANGELES BUSINESS JOURNAL

**Buchalter**  
www.buchalter.com



**JOEL SIEGEL**

*Managing Partner, Los Angeles Office  
Dentons*

With nearly three decades of litigation experience, Joel Siegel has earned a national reputation as one of the country’s premier trial lawyers, delivering favorable results in complex, high-exposure disputes. He is widely recognized for his strategic judgment and ability to resolve cases efficiently – whether by defeating class allegations at the earliest stages, securing dismissals, or achieving successful trial outcomes when settlement is neither possible nor prudent.

As managing partner of Dentons’ Los Angeles office, Siegel has led teams through a wide array of challenging cases, including defeating serial class actions under the California Invasion of Privacy Act, prevailing in multidistrict commercial disputes, and securing favorable verdicts in both state and federal courts across the country.



**SHANE SINGH**

*Litigation Attorney, Labor & Employment and ADA Accessibility; National Vice Chair, Hospitality Practice  
Lewis Brisbois Bisgaard & Smith LLP*

Shane Singh is a seasoned litigation attorney with 26 years of practice and a proven record of building disciplined legal strategy for employers navigating high-stakes disputes. Singh’s career reflects grit, consistency, and a deep commitment to earning trust through results. He developed a significant national practice supporting the hospitality sector in complex labor and employment matters, with particular strength in ADA accessibility and compliance-driven litigation. In a space where reputational risk and operational disruption can be as damaging as the legal exposure itself, Singh is known for clear counsel, practical solutions, and decisive advocacy.

Singh’s leadership is reflected in his role as national vice chair of this practice, where he helps shape strategy nationwide.



**JEFFREY SKLAR**

*Founding Partner; Co-Chairman  
Sklar Kirsh LLP*

Jeffrey A. Sklar is an innovative legal strategist and entrepreneurial leader whose career bridges high-level corporate counsel, firm leadership, and forward-looking business innovation. As founding partner and co-managing partner of Sklar Kirsh LLP, he has helped build a 60-attorney boutique into a premier California firm serving sophisticated clients across diverse industries. As co-chair of the Corporate practice, Sklar advises on complex mergers and acquisitions, joint ventures, partner disputes, and executive compensation, guiding companies from formation through transformative transactions.

Beyond traditional practice, Sklar co-founded PortOptix, an AI-driven platform that helps private equity sponsors unlock operational value and enhance exit outcomes.



**ALICE CHEN SMITH**

*Managing Equity Partner  
Yoka | Smith, LLP*

Alice Chen Smith is the managing partner of Yoka | Smith and an experienced trial lawyer who has successfully tried many cases to verdict and obtained summary judgment wins. Her primary focus is litigating catastrophic personal injury cases, products liability and business litigation matters. She practices throughout the State of California in trial and appellate courts.

Smith is president of the Association of Southern California Defense Counsel this year. She serves on the board of the Association of Business Trial Lawyers and will be its president in 2027, and she also serves on the Los Angeles Chapter of American Board of Trial Advocates as its membership chair. She is also a member of the Southern California Chinese Lawyers Association.

# Congratulations!

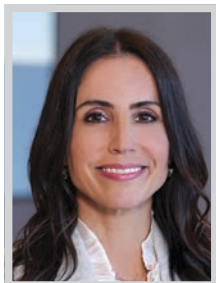
Partner Laura Reathaford was selected as a 2026 Top 100 Lawyer by the Los Angeles Business Journal.

**Collaborative. Accountable. Authentic.**



**Laura Reathaford**  
310.789.4648  
laura.reathaford@lathropgpm.com





**ALEXIS SMITH**  
Partner  
Jones Day

**L**exi Smith advises clients on complex intellectual property disputes, combining a technical background in chemical engineering with a sophisticated legal practice to represent some of the world's leading companies in high-stakes IP matters. What sets Smith apart is her ability to draw on years of experience as a practicing engineer, allowing her to bring practical, business-focused insight to disputes involving significant intellectual property investments. This dual perspective enables her to quickly understand complex technologies, assess risk and develop litigation strategies that align with clients' commercial objectives.

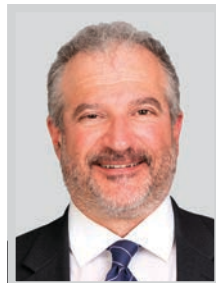
Smith's practice spans a broad range of intellectual property and business disputes, including patent infringement, trade secret misappropriation, licensing disputes, trademark and copyright infringement.



**KEITH SMITH**  
Managing Partner  
Wood Smith Henning & Berman LLP

**K**eith E. Smith has dedicated over 20 years to Wood Smith Henning & Berman, rising from law clerk to become one of only 16 equity partners firmwide and the founding and only managing partner of the firm's Riverside office. A cornerstone of WSHB's national employment practice, which spans 42 offices and more than 150 attorneys, Smith is recognized for his practical leadership style and deep commitment to fostering professional growth. He is frequently entrusted with leading complex, high-exposure matters and mentoring colleagues at every level, while maintaining an active presence across the firm's Riverside, Los Angeles, and Orange County offices.

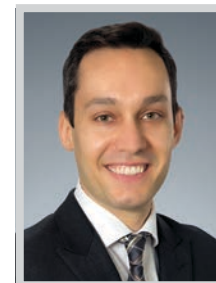
Smith defends employers in high-exposure wage and hour class actions, PAGA matters, discrimination, harassment, retaliation, and wrongful termination claims throughout Southern California.



**WILLIAM STEIN**  
Partner  
Fisher Phillips

**B**ill Stein is an accomplished trial lawyer who has led more than 50 jury trials, bench trials, and arbitrations, earning an impressive track record of victories for clients across numerous industries in all California jurisdictions. He is a strong advocate who continuously listens to clients' business goals, deftly negotiating settlements when advantageous or preparing to fight tenaciously at trial when winning is the only option—often prevailing so thoroughly that opposing counsel thinks twice before challenging his clients again.

Stein's passion for intensive litigation and courtroom advocacy makes him an invaluable asset to Fisher Phillips. As employment litigation has increased nationwide, he has risen to meet this challenge head-on, positioning himself as a go-to resource for attorneys across the firm's offices.



**ANDREW STRABONE**  
Partner  
Irell & Manella

**I**rell & Manella partner Andrew Strabone has secured more than \$1.5 billion for clients in the past 6 years and carved out a reputation as a relentless advocate who delivers results in complex, high-value disputes.

Strabone was a core member of the Irell team that secured a trial victory for Netlist in a suit against Micron, which involves patents relating to computer memory technology. The jury found both asserted patents willfully infringed by Micron, and awarded \$445 million in damages. He also helped secure a trial victory for Netlist in another suit against Samsung, in March 2025 on that same contract dispute. This was the fifth victory for Netlist in the past two years.

# YOKA | SMITH



YOKA | SMITH Congratulates Partner  
**ALICE CHEN SMITH**  
on being selected as one of the  
Top 100 Lawyers by the  
Los Angeles Business Journal.

Yoka | Smith: Excellence in Civil Defense  
[yokasmith.com](http://yokasmith.com)



TOTAL COMMITMENT®  
[thompsoncoburn.com](http://thompsoncoburn.com)

**CONGRATULATIONS to**  
**JENNIFER POST**  
for being selected among the  
**Top 100 Lawyers in Los Angeles!**





**ERIK SWANHOLT**  
*Partner*  
Foley & Lardner LLP

**E**rik Swanholt is a distinguished attorney with more than 25 years of experience advising and representing companies across a wide range of industries. His practice reflects decades of work guiding organizations through the full lifecycle of consumer and industrial products. Swanholt is widely recognized for his ability to help clients navigate complex regulatory landscapes, including product development, labeling and marketing compliance, supply-chain protocols, and interactions with key agencies such as the FDA, FTC, OEHHA, CARB, and Health Canada.

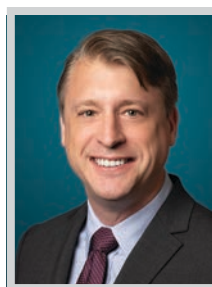
Swanholt has played a central role in numerous US and international product recalls and remediation efforts, consistently bringing steady, solutions-oriented leadership to high-pressure situations. In addition to his advisory work, Swanholt has built a strong record of success in litigation.



**DOUGLAS THOMPSON**  
*Partner*  
Snell & Wilmer

**D**ouglas A. Thompson, a partner in the Los Angeles office of Snell & Wilmer L.L.P., brings over 35 years of litigation experience, including more than a decade of in-house corporate leadership and litigation management. He has represented financial institutions and businesses in complex regulatory, class action, and commercial litigation matters, successfully defending hundreds of cases across federal and state courts. His combination of in-house and law firm experience allows him to bridge legal strategy with business insight, analyzing corporate operations, assessing risks, and communicating solutions effectively to executives and legal teams alike.

Thompson carefully observes company operations and practices to identify opportunities and defensive strategies, while proactively monitoring industry and regulatory developments.



**ZACHARY TURKE**  
*Co-Head, M&A*  
Sheppard

**Z**achary Turke is a corporate partner in the Los Angeles office of Sheppard, where he serves as co-head of the firm's Mergers & Acquisitions practice and co-leads its Aerospace, Defense & Government Services Industry Team. Over his 19 years with the firm, he has advised private equity firms, strategics and entrepreneurs on more than 250 transactions spanning buyouts, strategic acquisitions, cross-border deals, recapitalizations, and complex joint ventures. His practice sits at the intersection of sophisticated transactional execution and industry-specific regulatory complexity, particularly in aerospace and defense.

Over the course of his career, Turke has navigated clients through volatile economic cycles, evolving regulatory environments, and highly compressed deal timelines.



**DAVID WAITE**  
*Partner*  
Cox, Castle & Nicholson

**D**avid Waite is a prominent attorney specializing in real estate, land use, and environmental law. A partner at Cox, Castle & Nicholson, Waite believes that effective land use strategies and policies can address the social, economic, environmental and rebuilding challenges facing the region, including the rebuilding of the Palisades and Altadena communities and the recovery of Downtown Los Angeles.

Waite leverages his expertise in public, community and private development to provide leadership, foster community engagement, and inform public policy—helping his clients and colleagues successfully bring essential housing and infrastructure to meet community needs. With substantial real estate transactional and project development experience, Waite offers strategic counsel to developers, public entities, and corporate clients.

Congratulations to **Louis Wharton**, one of the city's "Top 100 Lawyers."

Thank you for expertly helping our clients build, scale, and succeed at every stage.



[stubbsalderton.com](http://stubbsalderton.com)



**LOUIS WHARTON**

*Partner*  
Stubbs Alderton & Markiles, LLP

Louis Wharton, partner of Stubbs Alderton & Markiles and co-chair of the firm's Venture Capital and Emerging Growth practice group, serves as expert counsel to clients in the technology, e-commerce and digital media industries, among others in the Los Angeles business community. His practice focuses on advising middle-market, emerging growth, early-stage and public companies in corporate finance, mergers and acquisitions, securities compliance and general corporate matters. Wharton also represents venture capital funds, angel networks and other professional advisors in connection with a variety of investment transactions.

Wharton serves as a strategic advisor to his clients, marshalling his decades of experience to assist with navigating the complex business issues they face. He has handled a broad range of matters on behalf of his clients.



**KATHY WUNDERLI**

*Partner; West Coast Co-Chair, Private Wealth*  
Willkie Farr & Gallagher LLP

Kathy Wunderli, a veteran attorney in the wealth management space, serves as West Coast co-chair of Willkie's Private Wealth Group, which provides best-in-class legal services to clients across the US and abroad. As practice leader, she fosters a strong culture of collaboration and mentorship across Willkie's three West Coast offices.

Wunderli is trusted to represent high-net-worth families and individuals, including in the entertainment industry, closely held business owners, business managers, accountants, and non-profits on a wide range of complex tax matters, including estate planning, probate and trust administration, and pre-marital, post-marital and transmutation agreements. Her sophisticated estate planning practice includes advising trustees and personal representatives in the administration of trusts and estates.

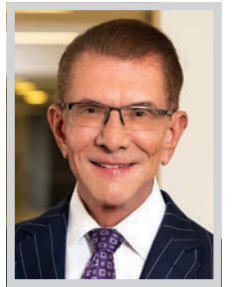


**STEPHANIE YONEKURA**

*Partner*  
Hogan Lovells

Stephanie Yonekura is one of the most trusted names in white collar defense and corporate investigations today. As the global head of Hogan Lovells' Investigations, White Collar, and Fraud practice, she leads a team of more than 150 lawyers across 20 jurisdictions, guiding global corporations through some of their most complex and sensitive challenges. A former Acting US Attorney for the Central District of California, Yonekura brings unmatched credibility, deep trial experience, and a steady hand to crisis moments – whether in the courtroom, the boardroom, or before regulators.

Her combination of technical excellence, real-world insight, and authentic leadership make her a force in her field and a role model in the profession. Yonekura has secured high-profile victories that underscore her exceptional litigation instincts.



**JAMES YUKEVICH**

*Partner*  
Yukevich | Cavanaugh

With over 100 jury trials under his belt representing Fortune 500 companies, James J. Yukevich is widely regarded as one of the best trial lawyers in the country. Augmenting his stature is his outstanding win percentage in contested civil trials. He is frequently consulted by the general counsel of Fortune 100 companies in areas involving liability issues, damages, proposed recalls, and public relations issues. Since the end of the pandemic, he has taken to trial and resolved over 20 high-exposure cases involving companies such as Lenovo, Tesla, Uber, CVS Health, Jaguar/Land Rover, Skanska, and many others.

Yukevich's 30 years of legal experience began in the Bronx, New York District Attorney's Office where he prosecuted violent felons and murderers to partner in a major New York firm.

**Partners  
in excellence.**

Angela C. Agrusa    Robert J. Sherman

DLA Piper congratulates Angela C. Agrusa and Robert J. Sherman.  
*Los Angeles Business Journal's*  
**Top 100 Lawyers 2026**

[dlapiper.com](http://dlapiper.com)

Angela C. Agrusa | ATTORNEY ADVERTISING | MRKT0045359

**Glaser  
Weil**

CONGRATULATIONS  
TO ALL OF THE  
HONOREES  
INCLUDED IN  
THIS YEAR'S

**Top 100  
Lawyers**

A special recognition to our  
Litigation Department Chair and  
firm leader, Patty Glaser.



LEGAL EXCELLENCE HONOREE

**STEVEN ELIE**

Co-Managing Partner  
Musick, Peeler & Garrett LLP

Musick Peeler co-managing partner Steven J. Elie is a seasoned litigation partner whose career reflects uncommon depth, range and resilience. Based in Los Angeles but practicing statewide, he has spent more than three decades at the forefront of complex business, insurance and environmental litigation, often in matters where the legal, regulatory and human stakes are at their highest.

Elie’s professional experience spans dozens of actions in California state and federal courts involving groundwater contamination, hazardous substances, and high-exposure tort claims, as well as disputes arising under landmark environmental statutes and local regulatory regimes. He has served as lead trial counsel in complex, multiparty litigation and administrative actions, navigating cases that demand technical mastery, strategic discipline, and credibility with courts and agencies alike. In parallel, his insurance practice, which covers primary, excess and umbrella policies, has guided insurers through high-risk coverage disputes involving environmental loss, construction defects, chemical exposure, and bad-faith claims.

The challenges Elie has overcome are inherent in the work itself: managing sprawling, multi-forum disputes; reconciling legal risk with business realities; and advising clients facing existential regulatory or financial exposure. His success stems from a rare ability to synthesize law, science and strategy, paired with calm, decisive leadership under pressure.

That leadership has had a direct and lasting impact on Elie’s organization and clients. As former general counsel of Musick Peeler, he advised and supported attorneys firmwide, strengthening risk management and institutional judgment. As outside general counsel to mid-size companies, he has become a trusted advisor, guiding organizations through regulatory compliance, remediation, governance and growth.



**Celebrating Alison Pappas – A Top 100 Lawyer**

Crosbie Gliner Schiffman Southard & Swanson (CGS3) proudly honors our partner Alison Pappas – recognized by the *Los Angeles Business Journal* as among the region’s “Top 100 Lawyers.”

A core member of our complex transactions practice group, Alison has spent 25 years shaping the landscape of commercial real estate – expertly structuring and negotiating leases spanning millions of square feet across office, life science, retail, and mixed-use developments. Her keen insight and expertise help establish CGS3 as a leader in sophisticated real estate law.

At CGS3, We are Different by Design. Visit [cgs3.com](https://cgs3.com) to learn more.



SAN DIEGO | LOS ANGELES | 858.367.7676 | WWW.CGS3.COM



**Congratulations to  
Cox Castle Partner  
David Waite**

on being named to the  
**2026 Top 100 Lawyers**  
list by the Los Angeles Business Journal.

David’s distinguished career reflects a longstanding commitment to Los Angeles—advising on transformative projects, shaping public policy, and helping communities grow and rebuild with resilience.



**140+**

ATTORNEYS

and professionals dedicated to real estate and beyond

**55+**

YEARS

servicing the real estate community

**100+**

AWARDS

firm, practice group, and individual awards for excellence



LOS ANGELES | ORANGE COUNTY | SAN DIEGO | SAN FRANCISCO



CHAMPION OF MENTORSHIP HONOREE

## SCOTT BURTON

Co-Head of Environmental and Mass Tort, United States  
Norton Rose Fulbright US LLP

Throughout his career, as well as his non-legal role in the Los Angeles community, Scott Burton has served as a strong, active mentor. While working as an economist, Burton played a lead role in recruiting and training young talent from premier national economics and econometrics programs including the University of Chicago, Cal Tech, MIT and Harvey Mudd College.

Burton served on the recruiting committee at his former firms, actively participated in the OCS legal recruitment function, and served as an associate mentor to summer associates and new first-year associates. Burton continued to serve as a strong mentor to many colleagues, including some who are now in-house at prominent clients such as Chevron, All Energy and Vigor Industries; and who now are prominent environmental practitioners and in some cases environmental team heads at competing law firms. Burton also has actively mentored many prominent lawyers coming out of government service.

Most recently, Burton has taken under his wing former FERC/OGC Environmental Justice team head Conrad Bolston, who Burton recruited to Norton Rose Fulbright mid-2025. Bolston was a promising athlete recruited to the University of Maryland football program, then played two years in the NFL as a defensive lineman for the Green Bay Packers and Minnesota Vikings. Despite a serious career-ending health issue, Bolston persevered, pivoted and attained a law degree from Georgetown University in Washington DC, then worked at other firms. Burton recruited Bolston to join Norton Rose Fulbright's environmental team and has mentored him to help supplement his strong environmental litigation experience.

WILLKIE CONGRATULATES OUR PARTNERS

## Michael Gottlieb and Kathy Wunderli



Los Angeles Business Journal's  
Top 100 Lawyers 2026

**WILLKIE**

1,300 LAWYERS | 16 OFFICES | 6 COUNTRIES

Attorney Advertisement



## AI Governance & Risk Management

Helping Law Firms Navigate AI with Confidence

As AI reshapes the legal landscape, firms face growing pressure to deploy AI responsibly — without compromising compliance, client trust, or professional ethics.

AI Policy & Compliance

Frameworks tailored to legal environments

Workflow Automation

Reduce risk in AI-assisted legal processes

Governance Readiness

Prepare your firm for evolving AI regulation

Ready to lead with responsible AI?

[www.veganext.com](http://www.veganext.com)

888-834-2550

[sales@veganext.com](mailto:sales@veganext.com)

AI Strategy · Governance · Risk Management



COMMUNITY IMPACT AWARD HONOREE

ELLEN ROBBINS

Partner, Litigation Practice Group
Akerman LLP

Ellen Robbins turns leadership into tangible impact for children, families and communities across Los Angeles. She does not simply support organizations in name; she invests her time, expertise, and personal resources to drive meaningful change. Her philanthropic commitment is especially clear through her work with Walk With Sally and Erik's Way. As a board member and mentor, she supports children impacted by cancer, offering families emotional guidance during some of their most difficult moments. She deepens this commitment by making substantial personal donations and personally funding an annual college scholarship for deserving mentees who demonstrate resilience and character.

Since 2017, Robbins has strengthened the local safety net through Sandpipers, a women's philanthropy group that supports agencies serving those in need. From 2019-2020, she co-chaired the group's summer arts program for at-risk youth, helping create opportunities for self-expression and growth. From 2021-2025, she led Sandpiper Juniors, guiding 120 high school students in hands-on philanthropic service and modeling lifelong community engagement. This year, she was appointed to the board's Nomination and Leadership Division to help identify and train future leaders.

Robbins has played an instrumental role in expanding equal access to education and opportunity for youth from underserved communities through her service on the Sandpipers Scholarship Committee and the Leadership Hermosa Beach Scholarship Committee, as well as through her personal funding of scholarships.

These and multiple other philanthropic efforts, including her sustained leadership in nonprofits, mentorship programs, and community initiatives exemplifies Robbins' status as an inspirational community impact role model.



Trusted Counsel to the Businesses Shaping Los Angeles

We partner with companies and investors on critical transactions and IP matters—helping them grow, protect value and lead.

We congratulate the Los Angeles Business Journal's 2026 Top 100 Lawyers, including our partners:



Zac Turke
Partner, Co-Head of M&A



Jill Pietrini
Partner



FIRM, CULTURE & LEADERSHIP AWARD HONOREE

### ALICE CHEN SMITH

Managing Equity Partner  
Yoka | Smith, LLP

Alice Chen Smith is the managing partner of Yoka | Smith and an experienced trial lawyer who has successfully tried many cases to verdict and obtained summary judgment wins. Her primary focus is litigating catastrophic personal injury cases, products liability and business litigation matters. She practices throughout the State of California in trial and appellate courts.

Leading by example, Smith serves on the boards of the Association of Southern California Defense Counsel (ASCDC) and will be its president in 2026, and the Association of Business Trial Lawyers (ABTL) and will be its president in 2027. Smith also serves on the Los Angeles Chapter of American Board of Trial Advocates (ABOTA) as its membership chair. She is also a member of Southern California Chinese Lawyers Association (SCCLA) and LACBA President's Advisory Committee on Women in the Legal Profession.

Smith practices throughout the State of California in trial and appellate courts. Her results-oriented work and civility has led to her recognition by a number of publications and organizations.



## 2026 Top 100 Lawyers

- LA Business Journal

Raines Feldman Littrell congratulates Miles Feldman on being recognized as a 2026 Top 100 Lawyers by LA Business Journal.



LOS ANGELES NEWPORT BEACH PITTSBURGH DELAWARE NEW YORK CHICAGO BOCA RATON

Raines Feldman Littrell LLP

www.raineslaw.com | 1900 Avenue of the Stars, 19th Floor Los Angeles, CA 90067

# LA Business Journal

2026 Top 100 Lawyers



CHRISTOPHER D. CARICO,  
PARTNER & CO-CHAIR

ESTATE PLANNING, PROBATE & TRUSTS

CCARICO@ECJLAW.COM | 424.218.3920

ERVIN COHEN & JESSUP LLP



ATTORNEY TO WATCH HONOREE

### ANDREW STRABONE

Partner  
Irell & Manella

In just his 11th year of practice, Andrew Strabone has already distinguished himself as one of the youngest leaders of an AmLaw 200 law firm, earning a seat on its five-person management team – the youngest ever selected to serve. That appointment reflects not only exceptional legal ability, but the trust of colleagues across generations.

Strabone has secured more than \$1.5 billion for clients in the past six years and carved out a reputation as a relentless advocate who delivers results in complex, high-value disputes. He was a core member of the Irell team that secured a trial victory for Netlist in a suit against Micron, which involves patents relating to computer memory technology. The jury found both asserted patents willfully infringed by Micron, and awarded \$445 million in damages in May 2024.

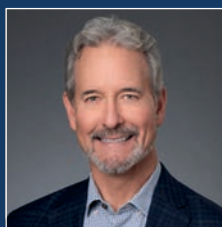
Outside of the firm, Strabone has helped secure billions of dollars in judgments for clients, delivering outcomes that require strategic discipline, courtroom credibility and sound judgment under pressure. These successes have positioned him as a go-to advocate on high-stakes matters and a steady presence when the stakes are highest.

What truly sets Strabone apart, however, is his focus on the firm's future. He is currently leading a revitalization of the firm's mentoring program, investing time and energy into developing younger lawyers and strengthening the culture of collaboration. By pairing elite client results with a commitment to leadership and mentorship, Strabone represents the next generation of law firm leadership – one whose influence is already significant and whose trajectory makes him unmistakably "one to watch."



Employee issues  
keeping you up at night?  
We'll handle it.

Innovative | Experienced | Responsive



LightGabler congratulates our  
Managing Partner **Jonathan Fraser Light**  
for being named as one of the  
*Top 100 Lawyers of LA.*

## LightGabler<sup>LLP</sup>

We Make Business Work<sup>®</sup>

EMPLOYMENT COUNSEL & LITIGATION | INTELLECTUAL PROPERTY

info@lightgablerlaw.com | LightGablerLaw.com | 805.248.7208

## Leading the Way

King & Spalding congratulates  
our partner, **Arwen Johnson**,  
for being named one of  
*Los Angeles Business Journal's*  
Top 100 Lawyers.



**Arwen Johnson**  
Managing Partner, Los Angeles



kslaw.com