

WOMEN OF INFLUENCE: ACCOUNTING



With 2025 well into its second half, and businesses and individuals focused intently on financial recovery, sustainability and protecting the bottom line, accountants are more essential than ever. There are some particularly stellar accounting professionals in the LA region – who happen to be women – and we’ve alphabetically listed some of the very best of them here, along with key information about their careers and relevant recent successes they’ve achieved.

Methodology: The professionals featured in these pages did not pay to be included. Their profiles were drawn from nomination materials submitted to the Los Angeles Business Journal. Those selected for inclusion were reviewed by the editorial department and chosen based on a demonstration of impact made on the profession and on the Los Angeles community.

WOMEN OF INFLUENCE: ACCOUNTING



JENNA AIRA-VENTRELLA
Principal
BDO USA

BDO USA principal Jenna Aira-Ventrella has over two decades of experience at the intersection of accounting, litigation, technology and global business. From leading investigations surrounding product liability and consumer class actions to guiding organizations through data challenges and cross-border risks, she has solidified her reputation as a breaker of barriers in the accounting industry.

Due to her successful leadership and positive impact on the firm, Aira-Ventrella was promoted to principal in BDO USA's Forensics practice in 2021, and currently serves as the forensics market leader for Southern California. In addition, she is the advisory leader for the firm's Southern California manufacturing and distribution industry group.



NANCY AMBROSSI
Assurance Director
Lucas Horsfall

With over two decades of experience in public accounting and nearly 20 years of dedicated service at Lucas Horsfall, Nancy Ambrossi is a director in the firm's Assurance and Accounting practice. Ambrossi works closely with a wide array of closely held corporations, offering deep expertise and insight across a range of industries including manufacturing, real estate, design, assembly, distribution and construction.

Over the years, Ambrossi has played a key role in enhancing audit methodologies, improving quality control processes and streamlining client service delivery across the firm. She brings clarity, assurance and confidence to those she works with, and has earned the trust of colleagues and clients alike through her clear communication, attention to detail and dedication to helping businesses grow and thrive.



DEBBIE CHAN
Tax Principal
BDO USA, P.C.

For nearly three decades, Debbie Chan has provided some of Los Angeles' wealthiest individuals with essential tax compliance and consulting services, establishing herself as one of its top accountants and most influential businesswomen. In 2022, she was named a principal in the Private Client Services group in BDO USA's LA office.

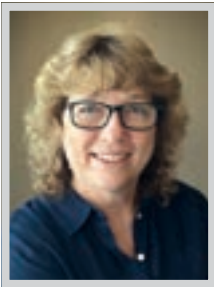
A wealth advisory expert for high-net-worth individuals, Chan is frequently sought after for her insights on emerging financial trends. Approximately 85% of her younger clients now have some form of cryptocurrency in their portfolios, and she is adept at helping clients navigate this space with prudence. Similarly, she advises clients, especially those from multigenerational families, on structuring real estate investments for optimal returns.



EVONNE CHEN
Tax Partner
Forvis Mazars

With over fourteen years of distinguished experience in public accounting, Forvis Mazars tax partner Evonne Chen specializes in corporate tax compliance and consulting services. Her expertise spans diverse industries including technology, media and telecommunications, manufacturing, and professional services.

As a growth-focused leader, Chen spearheads the expansion of Forvis Mazars' tax practice in Los Angeles while collaborating with practice leaders across California and Arizona to identify cross-selling opportunities and develop new market initiatives. She actively partners with Forvis Mazars offices throughout Asia to strengthen global branding and facilitate international market expansion. Chen is a key contributor to the firm's "Doing Business in the US" webinar series.



ENZA COHN
Managing Director
Gelfand, Rennert & Feldman LLC

Gelfand, Rennert & Feldman LLC managing director Enza Cohn started her 36-year accounting career as an IRS Agent. Through perseverance and passion, she ultimately rose to lead the GR&F tax division, earning a reputation as a successful business manager for individuals in the entertainment industry and Ultra High Net Worth clients.

By communicating, managing and understanding her clientele, Cohn effectively serves as their personal "CFO." She prepares and analyzes cash flows and budgets, directs clients through tax strategies, and in partnership with estate attorneys, has worked to create estate plans with the goal of maintaining her client's family's wealth. Cohn leads her team by sharing her experiences and expertise, often through intern seminars which facilitate growth within the firm.



A BIG CONGRATULATIONS TO
VLADA EDWARDS, MARIA NG-HUANG,
AND CAROLINE UY REILLY FOR BEING NAMED
IN THE LOS ANGELES BUSINESS JOURNAL'S
"WOMEN OF INFLUENCE: ACCOUNTING 2025"

*Their leadership, innovation, and dedication continue to inspire us all.
We're proud to have them at Citrin Cooperman!*

"Citrin Cooperman" is the brand under which Citrin Cooperman & Company, LLP, a licensed independent CPA firm, and Citrin Cooperman Advisors LLC serve clients' business needs. The two firms operate as separate legal entities in an alternative practice structure. The entities of Citrin Cooperman & Company, LLP and Citrin Cooperman Advisors LLC are independent member firms of the Moore North America, Inc. (MNA) Association, which is itself a regional member of Moore Global Network Limited (MGNL). All the firms associated with MNA are independently owned and managed entities. Their membership in, or association with, MNA should not be construed as constituting or implying any partnership between them. Published 2025.

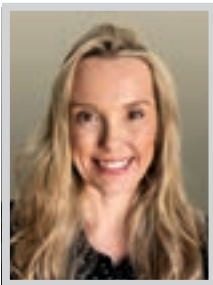
WOMEN OF INFLUENCE: ACCOUNTING



NANCY De LEON
Partner
EY

Nancy De Leon’s career at EY began as an intern more than 13 years ago, when she quickly proved herself as a stand-out talent. From day one, she eagerly absorbed every detail of the firm’s operations, and today, as an official partner, she continually demonstrates leadership and vision.

De Leon’s expertise in federal and state tax compliance for corporations and partnerships has positioned her as a trusted advisor in a critical, highly complex field. Her ability to navigate intricate tax structures and regulations has been invaluable to both EY and its clients, reinforcing the firm’s reputation as a leader in private equity tax services. Additionally, she is an active market leader, frequently meeting potential clients and spearheading key business opportunities.



KERRA DIENER
Partner
Withum

As a partner at Withum, Kerra Diener serves corporate clients with accounting for income taxes, tax planning and tax compliance, and assists multi-national and multi-state business entities including distributors, retailers and wholesalers.

Diener manages and consults on various tax topics for businesses and individuals including state income tax nexus, research and expenditures, 704(b) capital account maintenance, federal and state tax credits, clean energy tax credits and like-kind exchanges. She also has expertise in federal and state tax examinations, insolvency tax and planning for debt restructuring, reorganizations and liquidations. Diener recently implemented training simulations to create improved learning paths for new and experienced staff.



VLADA EDWARDS
Partner
Citrin Cooperman

As a partner and regional tax practice leader for Citrin Cooperman’s Southern California offices, Vlada Edwards plays a pivotal role in growing and developing the firm’s West Coast tax practice. With over 14 years of experience across private industry and public accounting, Edwards has deep expertise in compliance and consulting across a variety of complex sectors, including technology, manufacturing, consumer products and healthcare.

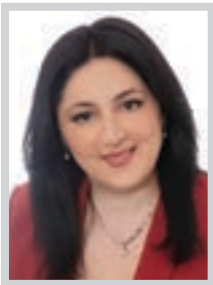
Edwards’ technical proficiencies include ASC 740 income tax accounting, international reporting, accounting method changes, IRS audit support, state nexus studies, and R&D credit calculations. Her leadership is instrumental in helping clients navigate evolving regulations, growth transactions, and cross-border tax complexities.



KAYO M. ELKNER
Partner
Prager Metis International

Kayo M. Elkner is a partner in the accounting and tax departments of Prager Metis, a member of Prager Metis International Group, and an accomplished CPA with over 20 years of experience in the accounting industry. Elkner specializes in providing accounting and tax services to individuals and closely held businesses. She has prepared individual, corporate, S corporation, and partnership income tax returns for clients in the US and internationally, including Japanese clients headquartered in Hawaii and California.

Elkner guides the Nagano Morita Division of Prager Metis to help bridge cultures between the United States and Japan. Fluent in Japanese, she is a member of Prager Metis’ Japanese Global Services Group, where she advises Japanese American businesses.



AZNIV (AZA) GHAZARYAN
Partner
Withum

Aza Ghazaryan is a Withum tax partner with over 20 years of experience in public accounting. She provides tax planning and compliance services for partnerships, high-net-worth individuals, trusts and not-for-profit organizations, and serves clients across several industries, including real estate, technology, restaurants and professional services.

Ghazaryan partners with clients in all phases of the business cycle ranging from start-up and rapid growth to mature companies and business owners seeking exit strategies and other liquidity events. Withum’s tax practice experienced significant growth in recent years, with the tax department’s revenue increasing by 30%. Ghazaryan has played a crucial role in sustaining this growth by developing recruiting and onboarding processes.



Congratulations
Frances Kallman

On being recognized as one of the
Los Angeles Business Journal
2025 Women of Influence
Accounting

“We are all women of influence!”

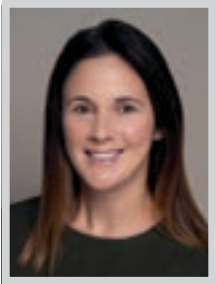


KALLMAN & COMPANY, LLP

www.kallmanandco.com
125 S. Barrington Place, Los Angeles, CA 90049
310-909-1900 • Fax 310-909-1909



WOMEN OF INFLUENCE: ACCOUNTING



NICOLE GONZALEZ
Partner
PwC LLP

Nicole Gonzalez is a partner in PwC's State & Local Tax practice. With over 17 years of experience, she has built a reputation for her expertise in multistate income tax compliance and controversy matters. She has advised clients across a wide range of sectors, including private equity, entertainment & media, engineering and construction, pharmaceutical, retail & consumer and technology.

Gonzalez leads large-scale, multistate tax compliance engagements where she oversees end-to-end compliance for multinational corporations. She has developed effective processes by leveraging the team she leads and PwC's market leading technology to drive efficiency and accuracy. Her technical skillset is not only deep, but dynamic — continually evolving to reflect changes and trends.



CATHY HYODO
Market Managing Principal, Greater Southwest Region, Grant Thornton Advisors LLC; Partner, Audit Services Grant Thornton

As the market managing principal of Grant Thornton's Greater Southwest offices, Cathy Hyodo has helped shape the direction of one of the largest professional services firms in the country — all while championing the people and industries she serves. During her 2021–2023 tenure on the firm's Partnership Board, Hyodo contributed to the selection of a new CEO and helped shape a bold new growth strategy that led to back-to-back years of record-breaking revenue for the firm.

As the leader of Grant Thornton's LA office since 2018, Hyodo oversees hundreds of tax, audit and advisory professionals while steering client service and operational strategy across Southern California.



JOAN JOH
Tax Director
Lucas Horsfall

Currently serving as a tax director at Lucas Horsfall, Joan Joh brings a strategic mindset to every engagement — delivering tailored tax planning, compliance, and consulting services to high-net-worth individuals, closely held companies, and professional service firms, with a strong focus in real estate and rental industries.

After joining Lucas Horsfall through a prior firm's merger, Joh quickly earned the respect of both clients and colleagues for her ability to simplify complex tax matters and create long-term value through proactive guidance. Her strengths lie not only in technical execution but also in building enduring client relationships based on trust, transparency and results. She is particularly known for helping younger staff develop confidence and clarity in their careers, fostering a culture of encouragement and shared success.



FRANCES KALLMAN
Managing Partner
Kallman & Company, LLP

Frances Kallman serves as managing partner of Kallman & Company, LLP (KCO). Under her leadership, the firm has successfully navigated significant periods of disruption, including the COVID-19 pandemic and more recently, the Los Angeles wildfires. Through her strategic focus on both operational continuity and employee safety, KCO maintained uninterrupted service to its clients during these times when guidance was needed most.

Under Kallman's leadership, KCO has grown from just a few professionals in 1997 to a team of nearly 45 today. The firm provides a full suite of accounting and tax services and operates in a boutique environment, offering specialized expertise across key industries such as real estate, nonprofit, entertainment, part-time CFO services, and wholesale and manufacturing.



SUSAN LEE
Partner, Tax Services
RSM US LLP

Currently a partner in RSM US LLP's (RSM) Tax Services practice, Susan Lee has more than 25 years of experience advising privately held middle market companies, business owners, and high-net-worth individuals on complex tax matters. Lee brings clients a unique blend of technical expertise, business insight and deep industry knowledge.

With over 17 years at the firm, Lee has advanced from tax manager to partner, demonstrating consistent leadership and commitment to client service excellence. She works closely with partnerships, corporations and individuals with multistate and international operations, offering strategic guidance on federal and state tax issues. She is especially valued for her ability to translate complex tax regulations into practical business strategies.

Congratulations!
Lori A. Roth &
Kayo M. Elkner

We are proud of your
spotlight in
2025 Leaders of Influence:
Women in Accounting in the
Los Angeles Business Journal



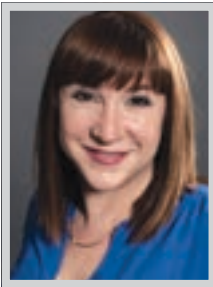
WOMEN OF INFLUENCE: ACCOUNTING



JOANNA LI
Partner, Tax Services
RSM US LLP

As a partner in RSM US LLP's (RSM) Tax Services practice, Joanna Li advises a broad range of clients, from publicly traded companies to privately held middle market businesses, on complex federal, international and multistate tax issues. She is highly sought after for her deep expertise in income tax provision under ASC 740, with advanced specialization in areas such as international tax provision, business combinations, interim reporting and stock-based compensation.

Li's leadership has been instrumental in helping multinational corporations navigate evolving regulatory environments and maintain compliance with SEC and PCAOB requirements. Additionally, she serves as an adjunct professor at Golden Gate University, where she mentors future tax professionals.



TERI LUBAROFF
Chief Operating Officer
Gelfand, Rennert & Feldman, LLC

Terri Lubaroff serves as chief operating officer of leading business management firm Gelfand, Rennert & Feldman, LLC, which specializes in full-service business management for entertainment, sports and ultra-high net-worth clients.

Lubaroff's work at Gelfand includes positioning its business managers as life-long advisors, using best-in-class technology, streamlined process and exceptional service with 700+ employees across nine offices from London to Los Angeles. Under her leadership, Gelfand is positioned for growth and scale while maintaining bespoke client service for the unique needs of the company's diverse client base. Lubaroff previously led Legion M Entertainment as COO and head of content where she produced the 2024 SXSW Audience award-winning feature film "My Dead Friend Zoe" and the thriller "The Man in the White Van."



KARLA LUNA
Tax Partner
BPM LLP

Early in her career at Gumbiner Savett (now part of BPM), Karla found herself as the only Latina Tax practice member among approximately 70 employees.

When Gumbiner Savett joined BPM in 2021, Luna took on the role of regional group leader for the Santa Monica tax team, helping integrate staff into the larger, regional firm dynamic.

As a tax partner at BPM, Luna specializes in tax planning, consulting and compliance for privately held companies and high-net-worth individuals across various industries. Her diligence in staying current with tax laws enables her to provide significant value to clients through identifying tax credits and industry-specific savings opportunities. She is also the founder and executive sponsor for BPM's Hispanic & Latinx Community Resource Group.



ALEXANDRA MARKOVICH
Partner
PwC LLP

Alexandra Markovich is an audit partner in PwC's technology and entertainment practice in Los Angeles. Over her 20 years in public accounting, Markovich has served clients large and small – including high-growth private companies and large multinationals – helping them achieve their business goals such as IPOs, significant acquisitions, complex equity compensation matters, and other unique transactions.

Whether she is working with a pre-revenue start-up or a Fortune 500 company, Markovich provides transparency into the audit process and delivers value and insights beyond the audit. Additionally, she is a member of the Board of the Center for Integrity in Forensic Science, an organization dedicated to improving the reliability and safety of criminal prosecutions by strengthening forensic science.



GINA McLEOD
Partner; Tax Practice Leader
GHJ

Gina McLeod, JD, LL.M., is GHJ's Tax Practice leader and has over 20 years of public accounting experience spanning multiple industries, including entertainment, food and beverage, manufacturing and distribution, and media and advertising. McLeod's versatility and comprehensive understanding of these sectors enhance GHJ's ability to serve a wide range of clients.

A proponent of GHJ's #BeMore culture, McLeod leads teams and serves clients in a supportive and collaborative environment. Prior to joining GHJ, McLeod was a partner at multinational accounting firm Deloitte. She holds a Bachelor of Arts degree in Literature from the University of California, San Diego, a Juris Doctor degree from Loyola Law School, and a Master of Laws degree in Taxation from Golden Gate University.



Congratulations to our Co-Managing Partner

Wendy On

for being recognized by the
Los Angeles Business Journal
as a Woman of Influence: Accountants.



Pictured from L to R: Jeffrey Hyldahl, Co-Managing Partner, Wendy On, Co-Managing Partner, and Steven Jager, Partner

AUDIT • ACCOUNTING • TAX • ADVISORY • BOOKEEPING • BUSINESS MANAGEMENT • CFO SERVICES

(213) 688-9898 • fwllp.com

WOMEN OF INFLUENCE: ACCOUNTING



MELISSA MORTON

Managing Director
Gelfand, Rennert, & Feldman LLC

Melissa Morton became the second female managing director at leading business management firm Gelfand Rennert and Feldman (GRF) in 2016. GRF specializes in full-service business management, tour accounting, royalty examinations, contract compliance and valuations, as well as publishing services for musicians, actors, writers, digital influencers and high net worth individuals.

Morton and her team have built long lasting relationships in the business management community with her peers and colleagues. She spends her days providing support and advice to her clients and staff with complex tax decisions and everyday business needs. Utilizing a hands-on approach with her clients, Morton is responsible for the business management needs of some of the world's biggest entertainment figures in music, television and film.



ANGEL NAVAL

Partner, Financial Accounting
and Advisory Services
MGO
(Macias Gini & O'Connell LLP)

As an accounting and advisory partner at Macias Gini & O'Connell LLP (MGO), Angel Naval brings deep technical expertise and a strategic mindset to every client engagement. Her work focuses on transforming financial infrastructure, strengthening internal controls and improving operational efficiency, allowing business owners to concentrate on scaling their businesses with confidence.

In her role as office managing partner for MGO's LA office, Naval fosters a culture of excellence, collaboration and inclusion. She also serves as the firm's professional services industry leader, where she spearheads initiatives tailored to the needs of law firms, architectural and engineering firms, consulting practices, and other service-based organizations.



DEBORAH NEWMAN

National Media and Entertainment
Industry Leader
Grant Thornton

As the head of industry for Media & Entertainment (M&E) at Grant Thornton, Deborah Newman has led one of the firm's most extraordinary growth stories. Under her leadership, what began as a modest segment of a broader telecom category has grown into a robust, strategic national practice with a projected revenue of \$81 million – up from \$29 million in 2019, an increase of nearly 180%.

Newman brought together disparate people and geographic locations to create a holistic M&E team that focuses on the high-growth subsectors—film, television, digital media, publishing and sports. She mapped key markets and elevated the firm's visibility through conferences, speaking engagements and active board leadership with organizations such as the Media Financial Management Association.



MARIA NG-HUANG

Partner
Citrin Cooperman

Maria Ng-Huang is a respected leader in the accounting profession with over two decades of experience delivering tax solutions to privately held businesses and high-net-worth individuals. A partner in Citrin Cooperman's Los Angeles office, Ng-Huang's career began with an 11-year tenure at PricewaterhouseCoopers LLP. She has since built a distinguished career focused on sophisticated tax strategy and client service.

Ng-Huang specializes in tax consulting and compliance for clients in real estate, restaurants, retail and entertainment, with a particular emphasis on flow-through entities and multigenerational wealth planning. Her work consistently reflects a nuanced understanding of complex ownership structures and the interconnectedness of business and personal tax strategy.



WENDY ON

Co-Managing Partner
Fineman West & Company

Co-managing partner at Fineman West Wendy On provides strategic accounting and financial leadership and consultation services to businesses ranging from early-stage startups to well-established companies in the manufacturing, consumer goods, technology, real estate, entertainment and professional services industries. With over two decades in the industry, she also has extensive experience as an outsourced CFO, and in tax structuring, business succession planning, capital advisory, mergers and acquisitions, and due diligence for buy/sell transactions.

On currently serves as chairman of the Board for the Asian Pacific Community Fund and vice chair of the California Hospital Medical Center Foundation Board. She also sits on the Advisory Board for TAG Alliance.

www.lucashorsfall.com

Lucas Horsfall



WOMEN
OF INFLUENCE



Joan Joh, CPA
Tax Director



Nancy Ambrossi, CPA
Assurance Director



Nikka Yochim, CPA
Tax Director

We're proud to **celebrate** Joan, Nancy, and Nikka for being named **Los Angeles Business Journal Women of Influence honorees!**

We are incredibly proud to see these outstanding leaders recognized for their dedication, excellence, and impact. Their work not only inspires those around them, but also reflects the values we hold at Lucas Horsfall — integrity, service, and leadership.

We are honored to have Nancy, Joan, and Nikka representing our firm and delivering exceptional value to our clients each day.
Congratulations on this well-deserved recognition.

WOMEN OF INFLUENCE: ACCOUNTING



RENEE ORDENEAUX
Partner
Armanino

From her early career at RBZ, LLP – where she played a central role in cultivating a progressive, service-driven culture – to her current position as Southern California nonprofit lead partner at Armanino, Renee Ordeneaux has consistently achieved success while uplifting others along the way. At RBZ, Ordeneaux helped grow the firm from a small West Los Angeles practice into a 175-person powerhouse, widely recognized for its employee-first philosophy and exceptional retention — achieving zero turnover for multiple years. When RBZ merged with Armanino in 2015, Ordeneaux played a critical role in guiding the transition and has since been instrumental in expanding Armanino’s nonprofit practice throughout Southern California and beyond.



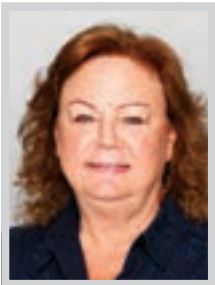
MARIA PEARMAN
Partner; Food and Beverage Practice Leader
GHJ

Maria Pearman is GHJ’s Food and Beverage practice leader and a nationally recognized expert in the beverage alcohol space. She has built her career around helping beverage companies — from startups to established producers — optimize financial performance and reach success during complex transitions. Pearman regularly teaches for organizations such as the University of Vermont’s Business of Craft Beer program and the Distilled Spirits Council of the United States Academy. She is also a highly sought-after speaker at industry conferences, where she shares financial best practices tailored to the nuances of beverage production and sales. Before joining GHJ, Pearman independently established and scaled a national accounting and advisory practice focused on beverage alcohol clients.



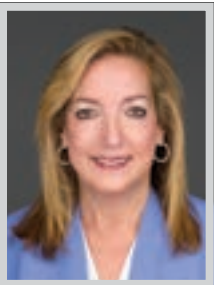
CAROLINE UY REILLY
Partner
Citrin Cooperman

Caroline Uy Reilly is a partner at Citrin Cooperman’s Los Angeles office, with more than 15 years of experience in public accounting. Reilly plays a critical role in delivering tax compliance and planning services for corporations, partnerships and high-net-worth individuals. She actively pursues higher education and ongoing technical training to stay ahead of a constantly evolving tax landscape. Her technical strength is matched by her holistic approach to client service. She builds long-term relationships grounded in trust, accessibility and a deep understanding of each client’s unique financial goals. Beyond her technical work, Reilly is deeply committed to mentoring junior professionals and supporting the advancement of women in accounting.



ANDREA ROSCHKE
Partner
SingerLewak

Prior to her current role as a partner at SingerLewak, Andrea Roschke served as a partner at Roschke & Wall, a highly regarded firm where she built a strong reputation for excellence in accounting and business advisory services. Her transition to SingerLewak has only strengthened the firm’s capabilities, especially in serving a diverse client base across multiple industries. Roschke blends technical expertise with practical guidance, focusing on business solutions for small to medium-sized businesses. Her success in the industry is driven by her deep expertise in government contractors, medical practices, manufacturing, high-net-worth individuals and real estate partnerships. Additionally, Roschke is a sought-after speaker, regularly presenting at NCMA webinars and professional events within the business community.



LORI A. ROTH
Global Managing Partner
Prager Metis International

As the global managing partner of Prager Metis – a member of Prager Metis International Group – Lori A. Roth oversees all day-to-day operations for the entire firm and provides guidance and oversight to each of its office managing partners and service line leaders. Roth holds a key role in developing firm strategic goals and policies, monitoring performance, and driving business growth. Roth has worked in accounting since 1984, specializing in audit and assurance services, litigation support and business valuations. She works with clients in a variety of industries, including closely held businesses, real estate, and the US subsidiaries of foreign banks and corporations. Roth’s expertise also includes working as a neutral accountant – either court-appointed or hired as a joint expert by either party in a dispute.

Congratulations to our esteemed employees for being recognized in

LA BUSINESS JOURNAL'S

2025 WOMEN OF INFLUENCE

MANAGING DIRECTORS

ENZA COHN

MELISSA MORTON

CHIEF OPERATING OFFICER

TERRI LUBAROFF



WOMEN OF INFLUENCE: ACCOUNTING



CHERYL TEETER-BALIN

Partner
Baker Tilly

As the Los Angeles assurance leader at Baker Tilly, and assurance people cornerstone leader for the Southern California region, Cheryl Teeter-Balin has developed deep expertise in complex accounting topics such as revenue recognition, leases, business combinations and equity instruments. Her guidance has helped numerous public and private middle-market companies across technology, manufacturing and consumer products industries navigate evolving accounting standards with confidence.

Teeter-Balin became the first female leader of the firm's Los Angeles Assurance Practice. She also led the firm's Technology Practice to industry prominence. Her visionary approach to market trends and innovation has attracted prestigious clients and solidified the firm's reputation as a leader in this fast-evolving sector.



DONELLA WILSON

Partner; Nonprofit Practice Leader
GHJ

Donella Wilson leads GHJ's nonprofit practice and serves as president and chief philanthropy officer of the GHJ Foundation. Wilson has driven significant growth and innovation by working alongside many leading charities and foundations in Southern California and helping countless nonprofits achieve their financial goals and maximize their impact.

Wilson's expertise and guidance helped establish GHJ Foundation in 2020. She regularly advises her colleagues on methods of giving back to their community through volunteerism and board membership. In 2024, Wilson joined GHJ's Executive Committee, further solidifying her role as a key leader as she shapes the future of the firm. Wilson was named a Best-in-State CPA in 2025 and a Top CPA in America in 2024 by Forbes.



TARA WILSON

Tax Partner
BPM LLP

Tara Wilson made history in 2024 as the first Black woman partner at BPM LLP. With over 17 years of public accounting experience, she is a tax specialist with deep knowledge in partnership taxation and real estate investments, serving clients across diverse industries including real estate, professional services, consumer business and manufacturing.

Wilson's recent launch and leadership of BPM's first REIT-focused tax practice represents a significant strategic expansion, providing support to real estate investment trusts throughout LA and beyond. Her recent accomplishments include counseling a client through a \$15 million commercial property acquisition, providing strategic guidance on stock option tax implications, and developing innovative tax structures for a real estate investment fund.



MELODY WU

Assurance Senior Manager
EY

Melody Wu is a seasoned audit professional with 13 years of experience in EY's Assurance practice, where she serves as a trusted advisor to both public and private companies across the real estate, hospitality and construction sectors. She has a wealth of experience successfully serving real estate investment trusts, private equity-backed ventures and real estate funds.

Wu possesses deep technical expertise in complex financial reporting and internal controls, including first-year SOX implementations, impairment assessments, asset valuations and business combinations. She is highly skilled in lease accounting, revenue recognition, consolidation and capital market transactions, and has supported clients through public offerings and the adoption of new accounting standards.



NIKKA YOCHIM

Tax Director
Lucas Horsfall

Nikka Yochim is a highly accomplished tax professional with over 20 years of industry experience and nearly seven years of dedicated service at Lucas Horsfall. She provides tax compliance, tax controversy and accounting services to family groups, including high-net-worth individuals, closely held businesses, trusts and estates.

Yochim's work often involves delicate coordination between generations as she manages the ever-changing needs of family-owned businesses, estate plans and trust administration. Her presence at Lucas Horsfall has elevated the firm's high-net-worth and trust service offerings, and her colleagues often look to her as a sounding board and mentor. Yochim remains closely involved with her alma mater, California State University, Northridge.

let's make some noise

When you're this proud, you have to get loud. Congratulations **Cathy Hyodo** and **Deborah Newman** from your Grant Thornton team!

Grant Thornton | Audit & Assurance | Tax | Advisory

© 2025 Grant Thornton Advisors LLC | All rights reserved | U.S. member firm of Grant Thornton International Ltd.

NOMINATE TODAY!

LOS ANGELES BUSINESS JOURNAL
TOP 100
ACCOUNTANTS
2025

The Los Angeles Business Journal is proud to host the 4th annual Top 100 Accountants event where we will honor the **top accounting professionals** in the Los Angeles region for their ongoing efforts as outstanding financial stewards.

NOMINATE A FINANCIAL LEADER TODAY
NOMINATION DEADLINE
FRIDAY, SEPTEMBER 5

To nominate, visit labusinessjournal.com/events/ta2025

DIAMOND SPONSORS

PLATINUM SPONSORS