

CUSTOM CONTENT

JANUARY 27, 2025

LEADERS OF INFLUENCE: LA's TOP DOCTORS

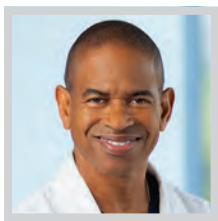


LOS ANGELES IS HOME TO MANY OF THE NATION'S BEST HEALTHCARE PRACTITIONERS AND CENTERS OF EXCELLENCE and this is our annual opportunity to shine a light on some of the finest.

For our Top Doctors profiles this year, we analyzed each of the many nominations received and pulled a few particularly outstanding medical professionals each from a broad array of disciplines of focus: Breast Surgery; Cardiology; Dentistry; Dermatology; Ear, Nose & Throat; Emergency Medicine; Endocrinology; Family Medicine; Gastroenterology; Hepatobiliary/Pancreatic Surgery; Internal Medicine; Neurology; Neurosurgery; Obstetrics & Gynecology; Oncology; Ophthalmology; Orthopedics; Otolaryngology; Pediatrics; Proctology; Pulmonology; Rheumatology; and Urology. Doctors were selected based on their good standing, reputation, thought leadership and success here in Los Angeles.

Methodology: The professionals featured in these pages did not pay to be included. Their profiles were drawn from nomination materials submitted to the Los Angeles Business Journal. Those selected for inclusion were reviewed by the editorial department. The professionals were chosen based on a demonstration of impact made on the profession and on the Los Angeles community.

LEADERS OF INFLUENCE: LA's TOP DOCTORS



DENNIS HOLMES
BREAST SURGERY

Medical Director
The Sam and Grace Carvajal
Comprehensive Breast Center at
Adventist Health Glendale

As medical director of The Sam and Grace Carvajal Comprehensive Breast Center at Adventist Health Glendale, Dr. Dennis Holmes leads an expert team of surgeons, oncologists, radiologists, and others delivering cutting-edge breast cancer care. His patients benefit from innovative treatments, including targeted intraoperative partial breast radiotherapy and cryoablation. His policy of seeing newly diagnosed cancer patients within two business days is the raising of the bar for breast cancer care standards. Currently, he is pioneering clinical trials affecting cancer treatment globally, including a clinical trial utilizing cryoablation to treat stage 0 and stage 1 breast cancer.



HARRY BALIAN
CARDIOLOGY

Interventional Cardiologist
Adventist Health Glendale

Dr. Harry Balian is the chairman of the cardiology department and directs the Structural Heart Program at Adventist Health Glendale. He specializes in the treatment of heart disease, coronary artery percutaneous interventions and pacemaker insertions. He also performs peripheral vascular interventions including carotid stents, endovascular abdominal aortic aneurysm stents, renal stents and lower extremity angioplasties. Dr. Balian helped start Adventist Health Glendale's TAVR (percutaneous aortic valve replacement) program in 2016. In December 2023, he performed the hospital's 500th TAVR procedure, marking a significant milestone for one of the leading cardiology programs in the nation.



GERALD BECKHAM
CARDIOLOGY

Chief of Medicine; Interventional Cardiologist
PIH Health

Gerald Beckham, MD is a board-certified physician specializing in interventional cardiology, currently serving as PIH Health's chief of medicine. Dr. Beckham specializes in invasive procedures, such as stenting blocked arteries, typically accessing the patient's heart through a single puncture site. During his extensive medical training, he served as chief resident in internal medicine at Kaiser Permanente Los Angeles. Since then, he has published numerous medical journal articles. Additionally, Dr. Beckham served as chair of the PIH Health By Laws Committee, currently resides on the PIH Health Medical Staff Excellence Committee, and is completing his term as health chair of the Medicine Department.



SUNNY BHATIA
CARDIOLOGY

President; Corporate Chief Medical Officer
Prime Healthcare

As a member of the Prime Healthcare Executive Leadership Team, Sunny Bhatia, MD establishes the overall direction and priorities for the company in enhancing the quality, safety, effectiveness and efficiency of healthcare delivery in 44 hospitals and more than 300 outpatient locations in 14 states. He designs and facilitates business strategies that include input, engagement and alignment of corporate leaders, C-suite leaders and physicians in achieving the mission, goals and long-term success of Prime Healthcare. Under Dr. Bhatia's leadership, Prime's hospitals have earned unprecedented accolades for quality, health equity, patient safety and performance from nationally recognized healthcare rating agencies.



NORMAN LEPOR
CARDIOLOGY

Director
National Heart Institute

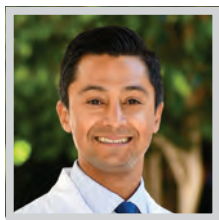
Norman Lepor has distinguished himself as an academic leader locally with Cedars-Sinai Hospital, the Smidt Heart Institute and the UCLA School of Medicine, where he has held the title of clinical professor of medicine. Dr. Lepor serves regional and national leadership roles with the Board of Governors of the internationally esteemed American College of Cardiology (ACC). He served as president of the California State Chapter of the ACC and spearheaded an initiative to partner with the Israel Heart Society and the Save-A-Heart Foundation to bring international cardiologists to train research fellows at centers of excellence including Cedars-Sinai, Stanford, and USC.



RAY MATTHEWS
CARDIOLOGY

Director, Interventional Cardiology, Keck Medicine of USC; Clinical Professor of Medicine, Keck School of Medicine of USC
Keck Medicine of USC

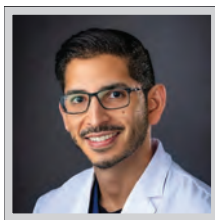
Ray Matthews, MD has a career spanning 20 years in private practice and 18 years in academic medicine. He has served as the prior division chief of cardiology at Keck Medicine of USC and has worked tirelessly to build a topflight interventional cardiology program. Dr. Matthews has built a practice performing the most challenging cardiac interventions exclusively referred by other cardiologists who cannot or will not perform them. Additionally, he has cultivated research collaborations with USC's college of engineering aimed at developing non-invasive, cell phone-based measurements of intracardiac pressures.



PARHUM NAMDARAN
CARDIOLOGY

Cardiology; Interventional Cardiology
Heart and Vascular Institute:
Adventist Health Glendale

Dr. Namdaran is a board-certified interventional, structural and endovascular cardiologist at The Heart and Vascular Institute at Adventist Health Glendale. He specializes in comprehensive cardiac assessment and management, from primary prevention strategies to the full array of cardiac interventions. Dr. Namdaran received his medical degree from the University of Washington School of Medicine, performed his internship at Stanford University, followed by fellowship training at Scripps Green Hospital and the University of Utah Medical Center. Dr. Namdaran's patient care philosophy is rooted in empathy, compassion, and a deep respect for every individual's unique journey to health.



SRIVIDHAR M. REDDY
CARDIOLOGY

STEMI Program Medical Director;
Associate Program Director,
Internal Medicine Residency Program
Centinela Hospital Medical Center -
Prime Healthcare

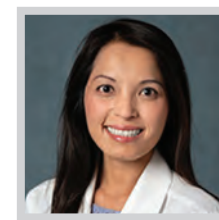
Srividhar Reddy, MD stands out as a leader and innovator in the fields of interventional cardiology and internal medicine. As the medical director of the STEMI Program at Centinela Hospital Medical Center, he has played a pivotal role in ensuring the program delivers timely and effective care for patients experiencing acute myocardial infarctions. Dr. Reddy has earned fellowships with the American College of Cardiology and the Society of Cardiovascular Angiography and Interventions. His academic contributions include assistant professorships at prestigious institutions and his current role as associate program director of the Internal Medicine Residency Program at Centinela Hospital.



JOHNNY KIM
DENTISTRY

CEO
Cal Dental USA

Beginning his journey in 1986, Dr. Johnny Kim quickly established himself as a leader by opening his own practice just two months after earning his dental license. His impact on the field is particularly evident in his specialization in dental implants. As a diplomate of the International Congress of Oral Implantologists, he has achieved one of the highest distinctions in implant dentistry. He has placed thousands of dental implants, restoring smiles and confidence for countless patients and setting a standard of excellence in implantology. Currently, Dr. Kim serves as CEO of Cal Dental USA, overseeing a network of over 23 dental offices across Southern California.



ALLISON TRUONG
DERMATOLOGY

Dermatologist
Cedars-Sinai

Dr. Allison Truong is a comprehensive dermatologist who cares for families, treating patients from newborns to those as old as 110 years. She has lectured locally and nationally and published numerous papers on topics such as skin manifestations of eczema, hidradenitis suppurativa, systemic lupus erythematosus, granuloma annulare, microbiome, skin cancers, and more. Her expertise encompasses the management of complex skin diseases. She is experienced with surgical treatment of skin cancers, as well as non-surgical methods to treat skin cancer and precancerous lesions. Dr. Truong also runs a full medical, cosmetic, and surgical dermatology practice.





UCLA Health congratulates

Los Angeles Business Journal TOP DOCTORS RECIPIENTS

as well as all of our physicians for being leaders in care delivery.

E. Dale Abel, MD, PhD
Endocrinology

Nicholas Bernthal, MD
Orthopedic Surgery

S. Thomas Carmichael Jr., MD, PhD
Neurology

Anne Coleman, MD, PhD
Ophthalmology

John Glaspy, MD
Oncology

O. Joe Hines, MD
Hepatobiliary/Pancreatic Surgery

Deborah Krakow, MD
Obstetrics & Gynecology

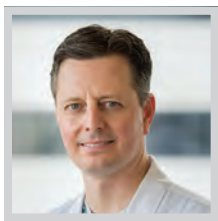
Linda M. Liau, MD, PhD, MBA
Neurosurgery

Maie St. John, MD, PhD
Otolaryngology

Michael Steinberg, MD
Radiation Oncology

WHERE DISCOVERY LEADS TO WORLD-CLASS HEALTH CARE

LEADERS OF INFLUENCE: LA's TOP DOCTORS



ALEXANDER MARKARIAN
EAR, NOSE AND THROAT
Assistant Professor of Otolaryngology - Head and Neck Surgery; Division Chief, Facial Plastic and Reconstructive Surgery Program USC Caruso Department of Otolaryngology - Head and Neck Surgery Keck Medicine of USC

Dr. Alexander Markarian is a board-certified facial plastic and reconstructive surgeon and a board certified head and neck surgeon. He has a busy private practice at USC, providing care in all aspects of facial plastic and reconstructive surgery. He specializes in facial aesthetic surgery, rejuvenation of the aging face, revision cosmetic surgery, primary and revision rhinoplasty (nasal reshaping surgery), facial paralysis rehabilitation, and reconstructive surgery of the head and neck. His research focuses on scarless wound healing, stem cell research and new treatments for facial paralysis.



SCOTT BRAUNSTEIN
EMERGENCY MEDICINE
National Medical Director Sollis Health

Dr. Scott Braunstein spent 17 years at the Cedars Sinai ER and was on the sidelines as the LA Rams airway physician for 4 years. He launched the Sollis Beverly Hills Clinic in September of 2020, and since then has added additional clinics in Santa Monica and Manhattan Beach, with plans to open a 4th LA-based clinic in 2025. Over the last five years, he assembled a team of 80 of the best emergency physicians, advanced care providers, ER nurses and radiology technicians, who provide 24/7 care in person, virtually, and at home for over 5,000 LA County residents.



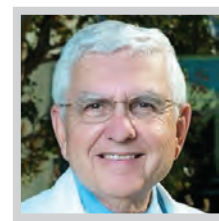
E. DALE ABEL
ENDOCRINOLOGY
Chair and Executive Medical Director, UCLA Health and David Geffen School of Medicine at UCLA UCLA Health

Since joining UCLA Health in 2021, E. Dale Abel, MD, PhD has launched an ambitious strategic plan to expand clinical care access, drive research innovation, and bolster training opportunities to develop leaders in all facets of health including care delivery and research innovation. Dr. Abel has transformed the field of endocrinology by elucidating the metabolic mechanisms that lead to heart failure in the context of diabetes and obesity. He has published more than 280 peer-reviewed publications and has been recognized by the Endocrine Society, the American Heart Association, the International Academy for Cardiovascular Scientists, and others as a leader in the field.



MAHTAB SOHREVARDI
ENDOCRINOLOGY
Physician Huntington Health

Dr. Mahtab Sohrevardi's area of interest is thyroidal disorders including hypothyroid, hyperthyroid and thyroid cancer, hormone replacement therapy for men, women and the transgender population. She has significant numbers of patient with osteoporosis in her practice. Also, there are pituitary cases and adrenal disease plus neuroendocrine tumors. She treats and manage patients with DM type 1, type 2, MODY, and those requiring insulin pump therapy and management. Sohrevardi graduated from Tehran university in Iran and completed her residency and fellowship at University of Utah. She moved to Los Angeles in 2020 and since then has worked at Huntington Health an affiliate of Cedars-Sinai.



RONALD SWERDLOFF
ENDOCRINOLOGY
Physician The Lundquist Institute

Dr. Ronald Swerdloff's research includes basic investigations, clinical trials, and translational studies. His research interests involve many aspects of basic male reproductive physiology and clinical reproductive investigation. His ongoing work is extensive, and includes regulation of spermatogenesis, regulation of the androgen receptor gene, neuroregulation of gonadotropin secretion, development of male contraceptive agents, pharmacology of androgen hormones, regulation of spermatogenesis, hormonal function in the testis, ethnic differences in the reproductive endocrine system, impaired vitality, osteoporosis and frailty in elderly men, factors influencing male fertility, the molecular basis of Klinefelter's Syndrome, and mutant mouse models in reproductive biology.



ANGELYN MOULTRIE-LIZANA
FAMILY MEDICINE
Physician PIH Health

As a family medicine physician, Angelyn Moultrie-Lizana, DO has provided healthcare services in Southeast Los Angeles County for more than 20 years. As an osteopathic medical practitioner, she has 200 hours of extra training in "hands on," or manual medicine. Dr. Moultrie-Lizana is a current member of the PIH Health Physician Satisfaction and Engagement Committee. She also served more than 20 years as a physician with Pioneer Medical Group (PMG) and was selected to the original board of directors of the Pioneer Health Association, overseeing the medical group's merger with PIH Health in 2020. She also served as department chair of family medicine at PMG.



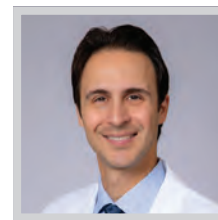
MAI-ANH VUONG-DAC
FAMILY MEDICINE
Physician PIH Health

Mai-Anh Vuong-Dac, MD is a board-certified family practice physician at PIH Health. In her role, Dr. Vuong-Dac treats patients of all ages. One of her notable career accomplishments was being elected chief resident during her family medicine residency, for which she served as a liaison between residents, attending physicians, and the residency program director. She guided and mentored residents to foster a collaborative and supportive learning and work environment and assisted with scheduling rotations to optimize learning opportunities. Dr. Vuong-Dac was also chosen to represent the Family Medicine specialty as a member of the Medical Standards and Quality Committee at PIH Health.



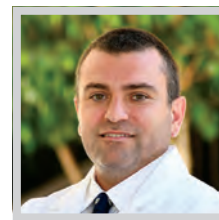
ALEXANDER KIM
GASTROENTEROLOGY
Director of Gastroenterology; Medical Director of Los Angeles Market, PIH Health Good Samaritan Hospital PIH Health

Alexander Kim, DO is a fellowship-trained, board-certified interventional endoscopist specializing in treating complex gastrointestinal diseases through minimally invasive, cutting-edge techniques. He currently serves as the director of gastroenterology at PIH Health Good Samaritan Hospital, which offers comprehensive, tertiary-level gastroenterology services. Dr. Kim strives to provide personalized and compassionate care at every step. His patients benefit from the latest innovative techniques that ensure optimal outcomes and faster recoveries. He previously served as director of a thriving endoscopy practice, where he worked successfully to elevate standards of patient care.



ARA SAHAKIAN
GASTROENTEROLOGY
Gastroenterologist Keck Medicine of USC

As a faculty member at USC's Division of Digestive and Liver Diseases, Dr. Ara Sahakian has spearheaded groundbreaking advancements in gastroenterology, combining clinical excellence, innovation, and leadership. After specialized training in advanced endoscopy at Yale-New Haven Hospital and a further fellowship at the National Cancer Center in Tokyo, he established the first submucosal/third-space endoscopy program in Southern California. This program has enabled patients to access minimally invasive, cutting-edge procedures, including endoscopic submucosal dissection (ESD) and per oral endoscopic myotomy (POEM). At Keck Hospital, he led efforts to double the endoscopy volume and oversaw the development of a new, state-of-the-art endoscopy unit.



JAMES TABIBIAN
GASTROENTEROLOGY
Gastroenterology; Advanced Endoscopy Adventist Health Glendale; Advanced Gastroenterology Center

Dr. Tabibian serves as the medical director of the Advanced Gastroenterology Center at Adventist Health Glendale. Dr. Tabibian's focus is on delivering high-quality endoscopic procedures, from screening colonoscopy to advanced procedures such as endoscopic retrograde cholangiopancreatography, endoscopic mucosal resection, endoscopic ultrasound and luminal stenting. Dr. Tabibian has served as an associate professor at the Geffen School of Medicine at UCLA. He was also the director of Endoscopy and housestaff research director for the Department of Medicine at Olive View-UCLA Medical Center. His clinical and research interests are in advanced and therapeutic gastrointestinal endoscopy.



PIH Health Congratulates Our Top Doctors

Gerald Beckham MD – Cardiology

Brendan Cerk MD – Rheumatology

Alexander Chow MD – Urology

Keith Cochran MD – Neurology

Richard Jordan MD – Internal Medicine

Alexander Kim DO – Gastroenterology

Angelyn Moultrie-Lizana DO – Family Medicine

Qui Vu MD – Ophthalmology

Mai-Anh Vuong-Dac MD – Family Medicine



PIH Health Good Samaritan Hospital



PIH Health Downey Hospital

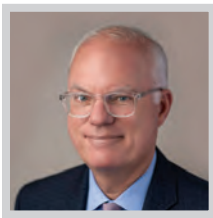


PIH Health Whittier Hospital



PIHHealth.org

LEADERS OF INFLUENCE: LA's TOP DOCTORS

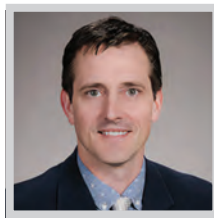


O. JOE HINES

HEPATOBIILIARY/PANCREATIC SURGERY

Chair and Executive Medical Director, Department of Surgery at UCLA Health; William P. Longmire, Jr. Chair in Surgery and Surgeon-in-Chief, Ronald Reagan UCLA Medical Center
UCLA Health

O. Joe Hines, MD, FACS leads a team of over 160 surgeons and 120 trainees caring for patients at sites across Southern California. A recognized national leader in the field of surgery and pancreatic disease, Dr. Hines makes significant contributions to both clinical practice and medical education, with research that has resulted in over 240 publications. He oversees an established research program focusing on pancreatic carcinogenesis, with emphasis on the role of diet in the development of cancer. He currently serves as president of both the Society of University Surgeons and American Pancreatic Association Foundations.

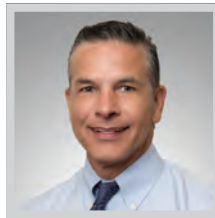


MARK L. STURDEVANT

HEPATOBIILIARY/PANCREATIC SURGERY

Professor of Clinical Surgery; Chief, Division of Hepatobiliary and Pancreatic Surgery and Abdominal Organ Transplantation, Keck Medicine of USC; Co-Director Digestive Health Institute for Liver Health; Chief, Division of Abdominal Transplantation, Children's Hospital of Los Angeles
Keck Medicine of USC

Mark L. Sturdevant, MD has made an impactful contribution in the field of living donor liver transplantation (LDLT). He developed the LDLT program at the University of Washington-Seattle and within 2 years it became the most productive pediatric LDLT program in the country. Dr. Sturdevant was asked to co-chair a national consensus conference, funded by the American Society of Transplantation, to identify and overcome impediments to broader application of LDLT in the US.



RICHARD JORDAN

INTERNAL MEDICINE

Vice Chair, Adult Medicine
PIH Health

In his role as an internal medicine specialist, Richard Jordan, MD manages and treats common health problems such as hypertension, heart disease, diabetes, and problems of the lung, brain, kidney, and gastrointestinal tract. In caring for his patients, he seeks to prevent serious, chronic, and complex illnesses in adults and the elderly. He began his career in the emergency room, but soon realized that he preferred to help patients be proactive in their health. Dr. Jordan is bilingual in English and Spanish, and he is especially interested in helping the underserved population learn more about the complications of chronic conditions.



SANJAY KHEDIA

INTERNAL MEDICINE

Internal Medicine Physician; Bioidentical Hormone Replacement Therapist
Emanate Health

Sanjay Khedia MD's patient care philosophy is an extension of our values of respect, excellence, compassion, integrity and stewardship, and he has been integral in elevating the health of the community for over 20 years. Dr. Khedia has an empathetic approach to patient care. Before recommending any treatment plans, he prioritizes listening to his patients to understand their concerns, health goals and lifestyle, and then applies his extensive experience and expertise to address his patients' needs. Dr. Khedia believes in developing a collaborative partnership with his patients to earn their trust, which helps to effectively maintain and improve their long-term health.



S. THOMAS CARMICHAEL, JR.
NEUROLOGY

Chair, Department of Neurology at UCLA Health; Professor of Neurology, David Geffen School of Medicine at UCLA
UCLA Health

S. Thomas Carmichael, Jr., MD, PhD is a neurologist and neuroscientist with active laboratory and clinical interests in stroke and neurorehabilitation, and how the brain repairs from injury. He has translated his findings in the research lab to multi-site clinical trials and led NIH and national policy summits to move his field forward. As chair of the Department of Neurology, Dr. Carmichael oversees 150 faculty, 550 staff and the annual operating budget. He is annual meeting chair of the American Neurological Association, and past president of the American Society for Neurorehabilitation.

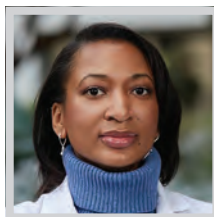


KEITH COCHRAN

NEUROLOGY

Movement Disorders Specialist; Chair, Department of Neurology
PIH Health

Keith Cochran, MD is board-certified and fellowship-trained with subspecialty training in movement disorders neurology. Dr. Cochran believes that his scientific knowledge allows him to improve the quality of life for his patients. He has cared for many patients with diverse neurologic problems and concerns, including patients suffering from Parkinson's disease. He was appointed as director of the PIH Health Neurology Clinic in 2023. In his role, Dr. Cochran seeks to improve access to neurology care for those who need it, and to find ways of using advanced treatments in the field to alleviate symptoms and to restore his patients' quality of life.

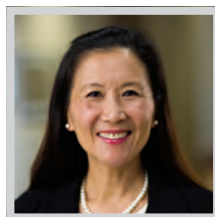


ALEXIS SIMPKINS

NEUROLOGY

Associate Professor, Neurology
Cedars-Sinai

Dr. Alexis Simpkins is a top clinician scientist who treats patients with cerebrovascular disease, educates trainees on neurology and cerebrovascular disorders and conducts cutting-edge research on novel therapeutics for stroke care. Dr. Simpkins within the Stroke Division at Cedars-Sinai, and conducts translational research on cardiovascular disease, aging, novel acute stroke treatments, stroke prevention, and advanced brain imaging, resulting in 60 peer-reviewed publications and grant funding from foundations and the NIH. She is vice chair of the History of Neurology section at the AAN and was senior author on the paper that won the 2024 AAN Lawrence C. McHenry history award.

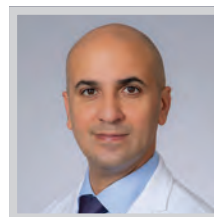


LINDA M. LIAU

NEUROSURGERY

Chair, Department of Neurosurgery at UCLA Health; Professor and Director, UCLA Brain Tumor Center; Professor of Neurosurgery, David Geffen School of Medicine at UCLA
UCLA Health

Linda Liao, MD, PhD, MBA is internationally recognized for her achievements in understanding the immunobiology of malignant brain tumors and pioneering the use of dendritic cell-based vaccines and other immunotherapeutic approaches for glioblastoma. She led the first-in-human clinical trial of a personalized cellular immunotherapy for glioblastoma, which she took for early Phase 1 studies to a large international multi-center Phase 3 trial. Dr. Liao has authored over 250 peer-reviewed research articles, along with several book chapters, and a textbook entitled Brain Tumor Immunotherapy.

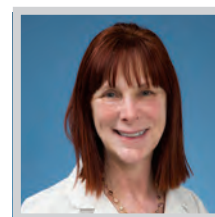


GABRIEL ZADA

NEUROSURGERY

Professor of Neurological Surgery; Surgical Director, USC Brain Tumor Center
Keck Medicine of USC

Throughout his 20-year career as a neurosurgeon, Dr. Gabriel Zada has been deeply committed to advancing patient care through minimally invasive surgical techniques, innovative technologies, and education. He has treated thousands of patients and has performed over 2,000 procedures using both minimally invasive and open cranial approaches at Keck Hospital of USC and Los Angeles General Hospital. These cases, ranging from complex skull base tumors to pituitary disorders and brain tumors, have driven him to continually refine surgical approaches that reduce recovery times, minimize risks, and improve outcomes. He has published over 150 peer-reviewed articles.



DEBORAH KRAKOW

OBSTETRICS & GYNECOLOGY

Chair, Department of Obstetrics and Gynecology; Professor of Orthopaedic Surgery, Professor of Human Genetics and Professor of Pediatrics, David Geffen School of Medicine at UCLA; Vice Chair of Clinical Affairs, Department of Human Genetics
UCLA Health

Deborah Krakow, MD is a distinguished leader whose groundbreaking contributions in human genetics and obstetrics have transformed the understanding of congenital or heritable disorders and prenatal diagnostics. With a career spanning over two decades, she has consistently pushed the boundaries of medical science, improving patient outcomes and setting new standards for excellence. Among Dr. Krakow's most significant achievements is her pioneering research into skeletal dysplasias, a group of over 750 heritable disorders affecting bone development.





With every one of our
cancer discoveries

hope is heard
around the world.



Terence M. Williams, M.D., Ph.D.
*Radiation Oncologist; Professor and Chair,
Department of Radiation Oncology*

Alex Herrera, M.D.
*Hematologist-Oncologist; Chief, Division of
Lymphoma, Department of Hematology &
Hematopoietic Cell Transplantation*

City of Hope® is one of the largest, most advanced comprehensive cancer centers in the U.S., with its National Medical Center ranked top 5 in the nation by U.S. News & World Report. In the race to beat cancer, we aren't just keeping pace, we're hundreds of novel trials and life-changing discoveries closer to reaching a cure. This is the power of hope.

Pursuing cancer cures at the speed of life.



**City of
Hope®**

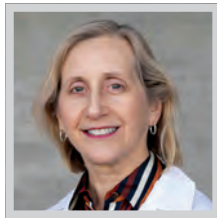
CityofHope.org

LEADERS OF INFLUENCE: LA's TOP DOCTORS



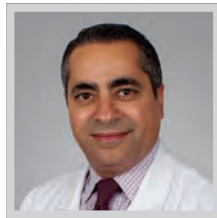
ALDENE ZENO
OBSTETRICS & GYNECOLOGY
Urogynecology Surgeon
Adventist Health Glendale

Dr. Aldene Zeno is a fellowship-trained surgeon in urogynecology, offering a wide range of OBGYN services. Dr. Zeno specializes in treating urinary incontinence, fallen bladder, uterus, pelvic pain, bladder pain, menopause, hormones, failed prior treatments, medical aesthetics for vaginal and vulval health, and many more women's health issues. She is adept at performing minimally invasive surgeries, including robotically assisted and traditional laparoscopy. As a published author, avid researcher, and certified fitness trainer, Dr. Zeno is uniquely positioned to offer treatments and surgeries that complement healthy lifestyles. She has also dedicated time and resources to supporting international surgical missions.



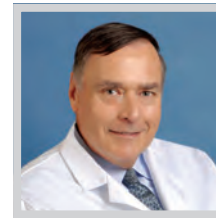
PAMELA BECKER
ONCOLOGY
Professor, Division of Leukemia,
Department of Hematology &
Hematopoietic Cell Transplantation
City of Hope

Physician-researcher Pamela Becker, MD, PhD is a highly respected clinician with expertise in acute myeloid leukemia, multiple myeloma, bone marrow failure and other diseases of the blood and immune system. She is also leader in translating research breakthroughs into health solutions, with a focus on improving therapy for blood cancers. Joining City of Hope in 2022, Dr. Becker brought with her more than 30 years of experience in patient care, research and programmatic leadership. At University of California, Irvine, she was co-leader of the Systems, Pathways & Targets Program at the Chao Family Comprehensive Cancer Center.



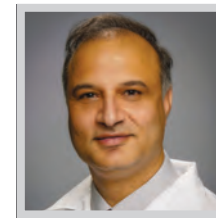
ANTHONY EL-KHOUeirY
ONCOLOGY
Associate Director, Clinical Research;
Chief, Section of Developmental
Therapeutics / Phase I Program; Verna R.
Richter Chair in Cancer Research, USC
Norris Comprehensive Cancer Center
Keck Medicine of USC

Dr. El-Khoueiry leads the phase I section of developmental therapeutics at USC Norris Comprehensive Cancer Center. He has played a critical role in developing and conducting first-in-human and first-in-class clinical trials of various agents for the treatment of solid tumors. He led the phase I clinical trial of Botensilimab, a novel innate and adaptive immune activator that has shown promising activity in refractory advanced microsatellite stable colorectal cancer. Dr. El-Khoueiry is also a recognized international expert in the treatment of hepatobiliary cancers.



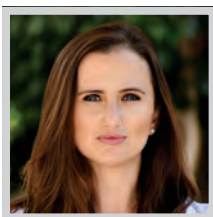
JOHN GLASPY
ONCOLOGY
Simms / Mann Family Foundation
Endowed Chair in Integrative Oncology,
UCLA; Medical Director, Simms / Mann-
UCLA Center for Integrative Oncology;
Professor of Medicine, David Geffen
School of Medicine at UCLA
UCLA Health Jonsson
Comprehensive Cancer Center

John Glaspay, MD has been instrumental in shaping UCLA Health's cancer care program throughout his career, playing a key role in its growth and evolution. When he began his career at UCLA, the oncology faculty included just six members. Today, thanks to his leadership, it has expanded into a robust team of hundreds. A pioneer in holistic cancer care, Dr. Glaspay believes in treating patients as whole individuals, not just cases of disease. He emphasizes a comprehensive approach that addresses the emotional, psychological and social needs of both patients and their families.



NAVEED KHAN
ONCOLOGY
Hematologist; Oncologist
Emanate Health

Naveed A. Khan, MD is a hematologist/oncologist at the Emanate Health Cancer Center and on its medical staffs (Emanate Health Medical Center and Emanate Health Foothill Presbyterian Hospital medical staffs). Dr. Khan has worked in the community for several years and has gained a robust understanding of those he serves. He works with patients and their families to make treatment decisions together. He is committed to helping his patients throughout their cancer journey. He believes it is important to establish relationships with patients and their families so he can be an effective guide.



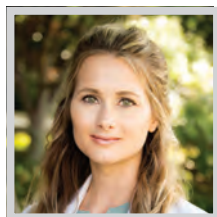
LEAH MARSH
ONCOLOGY
Gynecological Oncologist
Adventist Health Glendale

Dr. Leah Marsh is fellowship-trained in gynecologic oncology. She is passionate about identifying patients at risk for hereditary cancer. Her innovative work has been presented at multiple national conferences and published in Obstetrics and Gynecology. Dr. Marsh is skilled in complex open and minimally invasive (robotic and conventional laparoscopic) surgery. She completed her undergraduate degree in reproductive health at UC Berkeley and earned a master's degree in Global Medicine at the University of Southern California. She believes in practicing evidence-based, precise, personalized, and preventative medicine. Patients appreciate her exceptional bedside manner, her attention to detail, and her commitment to shared decision making.



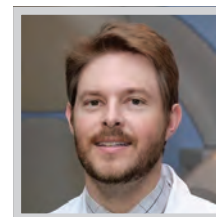
MUSTAFA RAOOF
ONCOLOGY
Assistant Professor, Division of Surgical
Oncology, Department of Surgery;
Assistant Professor, Department of Cancer
Genetics and Epigenetics
City of Hope

Talented surgical oncologist and scientist, Mustafa Raoof, M.D., M.S., joined City of Hope in 2015, where he focuses on the surgical treatment of cancers within the abdominal cavity, particularly those from the liver, bile ducts, pancreas and the gastrointestinal tract. At City of Hope, Dr. Raoof is part of one of the largest programs in the region performing complex cytoreductive surgery and hyperthermic intraperitoneal chemotherapy for cancers that have disseminated within the abdominal cavity. He also has vast experience in providing all aspects of surgical care to patients whose cancer has spread to the liver.



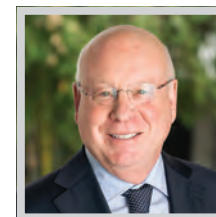
KATHERINE SCHULZ-COSTELLO
ONCOLOGY
Assistant Clinical Professor, Division of
Breast Surgery, Department of Surgery
City of Hope

Southern California native, Dr. Schulz-Costello earned her degree at Western University of Health Sciences: College of Osteopathic Medicine of the Pacific in Pomona, followed by a general surgery residency at Arrowhead Regional Medical Center in Colton where she served as administrative chief resident. Her comprehensive breast cancer surgery fellowship at City of Hope was the culmination of her expertise. A highly respected and rated surgeon, Dr. Schulz-Costello is especially interested in helping high-risk patients, such as those with the BRCA1, BRCA2 and other genetic mutations. She performs a wide range of breast cancer procedures.



CHAD SILA
ONCOLOGY
Radiation Oncologist
Advanced Oncology, Redondo Beach

Dr. Chad Sila graduated summa cum laude from UC Riverside with a degree in biological sciences. He earned his medical degree from Loma Linda University where he graduated in the top 1% of his class. He completed his residency in radiation oncology at Loma Linda University, where he also served as chief resident. During his training, he presented research on glioblastomas and arteriovenous malformations at the American Society for Radiation Oncology (ASTRO) Annual Conference. Dr. Sila also completed additional subspecialty training in MRI-based HDR brachytherapy and stereotactic radiosurgery/stereotactic body radiation therapy at UC San Diego Moores Cancer Center.



MICHAEL STEINBERG
ONCOLOGY
Chair, Department of Radiation Oncology
at UCLA Health; Professor, David Geffen
School of Medicine at UCLA; Director of
Clinical Affairs, UCLA Health Jonsson
Comprehensive Cancer Center
UCLA Health

Michael Steinberg, MD is a leader in cancer care, health policy and healthcare economics who has dedicated his career to advancing patient-centered care and addressing health disparities. Combining clinical research with effective health policy to best provide patients with state-of-the-art care, Dr. Steinberg has made lasting contributions to national health policy and economic frameworks that prioritize patient welfare. As the founding chair of the Health Policy Council for the American Society for Radiation Oncology, he spearheaded initiatives to enhance healthcare delivery, quality and equity.



**WE GO BEYOND YOUR VITALS
TO LEARN WHAT'S
VITAL TO YOU.**

At Keck Medicine of USC, our experts partner with you. Listen to you. And provide personalized care to help you live a limitless life. Because while we work to treat your body, we love to help your spirit soar. **Together we are limitless.**



**BEST
HOSPITALS**

& WORLD REPORT
U.S. News

RANKED IN
8 SPECIALTIES
2024-2025

LEADERS OF INFLUENCE: LA's TOP DOCTORS



SHANMUGA SUBBIAH
ONCOLOGY
Medical Director,
Emanate Health Cancer Center
Emanate Health

Shanmuga Subbiah, MD is the medical director of the Emanate Health Cancer Center and a hematologist/oncologist on the Emanate Health Medical Center and Emanate Health Foot-hill Presbyterian Hospital medical staffs. He is knowledgeable not only about hematology/oncology, but also about the communities that he has served for many years. Dr. Subbiah is highly respected by both his peers in the health care industry as well as his patients. He has dedicated his career to serving the members of at the community level and ensuring that they have access to the best cancer care in their own neighborhoods.



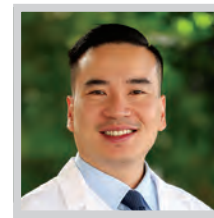
KRISTOPHER WENTZEL
ONCOLOGY
Hematologist Oncologist
The Angeles Clinic and Research
Institute, A Cedars-Sinai Affiliate

Dr. Kristopher Wentzel leads the Genitourinary Cancer Clinical Program at The Angeles Clinic and Research Institute. His clinical areas of research include immunotherapeutics and novel targeted therapies in the treatment of kidney, bladder and prostate cancer. He leads a multidisciplinary team of surgeons and radiation oncologists investigating paradigm-shifting approaches towards bladder preservation in patients with newly diagnosed muscle-invasive bladder cancer. Dr. Wentzel completed his fellowship at the Norris Comprehensive Cancer Center and his residency at the USC School of Medicine. He received his medical degree from the University of Miami.



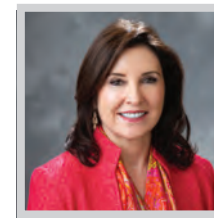
TERENCE WILLIAMS
ONCOLOGY
Chair and Professor of Radiation Oncology,
City of Hope National Medical Center
City of Hope

Dr. Terrence Williams is chair and professor of radiation oncology at City of Hope National Medical Center. In addition to his administrative efforts, he has excelled in laboratory-based research, with ongoing studies that involve elucidating oncogene-mediated resistance to genotoxic therapies, caveolae-mediated endocytosis, identifying novel DNA repair, and developing genetic and molecular signatures that predict tumor progression or response to therapies. His research endeavors have generated over 170 peer-reviewed manuscripts in leading scientific journals. He is currently a permanent member of the Radiation Therapeutics and Biology (RTB) Study Section.



JEKWON YEH
ONCOLOGY
Medical Director of Radiation Oncology
and Cancer Services
Adventist Health Glendale
Cancer Center

Dr. Jekwon Yeh is a distinguished radiation oncologist serving as medical director at Adventist Health Glendale's Cancer Center. His leadership as chairman of Elsevier's ClinicalPath Genitourinary Cancer Team highlights his expertise in the treatment of prostate, bladder, and testicular cancers. His expertise also includes other cancers including the breast, head & neck, lung, gastrointestinal, brain, and more. With a substantial background in research, Dr. Yeh has contributed to several journals and presented his research at numerous conferences. During his previous tenure as assistant clinical professor at City of Hope National Medical Center, he was elected to the Medical Executive Committee.



ANNE COLEMAN
OPHTHALMOLOGY
Chair, Department of Ophthalmology at
UCLA Health; Director, UCLA Stein Eye
Institute; Affiliation Chair, Doheny Eye
Institute at the UCLA David Geffen School
of Medicine; Professor of Epidemiology,
UCLA Fielding School of Public Health
and Charles Drew Medical School
UCLA Health

Anne L. Coleman, MD, PhD is a distinguished researcher with a focus on the public health impact, risk factors, and treatments of the main causes of blindness, including glaucoma, cataracts, and age-related macular degeneration. She has also studied sources of visual impairment and potential interventions in children. Her clinical experience with patients has afforded numerous opportunities for collaboration and large-scale, population-based studies on glaucoma and its medical surgical options, modifiable risk factors, and early disease detection.



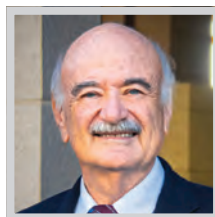
MICHAEL IP
OPHTHALMOLOGY
Professor of Ophthalmology
Doheny Eye Institute / UCLA David
Geffen School of Medicine

Michael S. Ip currently serves as the Gavin S. Herbert endowed chair for macular degeneration and as medical director of the Doheny Image Reading Center at Doheny Eye Institute. Previously, as the co-director of the Fundus Photograph Reading Center, he assisted with the collection, analysis, and dissemination of important primary and secondary outcomes in ophthalmic clinical trials. Early in his career, he focused primarily on industry sponsored trials, such as the Eli Lilly trials for protein kinase C inhibitor for diabetic macular edema (MBBK). Dr. Ip has served both as a clinical site investigator and on advisory boards and writing committees.



SRINIVAS SADDA
OPHTHALMOLOGY
Professor of Ophthalmology
Doheny Eye Institute / UCLA David
Geffen School of Medicine

Srinivas Sadda, MD is considered one of the leading experts in diseases of the retina and has published more than 800 peer-reviewed articles and 20 book chapters on the subject. Dr. Sadda currently holds the A. Ray Irvine endowed chair of ophthalmology at the Doheny Eye Institute and Department of Ophthalmology at UCLA. He is immediate past president of the Doheny Eye Institute and currently the director of artificial intelligence in imaging research at the institute. Additionally, he is president of the prestigious Association for Research and Vision in Ophthalmology (ARVO).



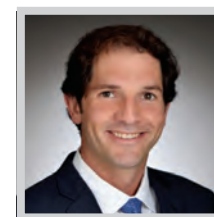
ALFREDO A. SADUN
OPHTHALMOLOGY
Flora L. Thornton Endowed Chair,
Doheny Eye Centers-UCLA; Chief of
Ophthalmology, Doheny Eye; Vice- Chair
of Ophthalmology, UCLA
Doheny Eye Institute

Alfredo A. Sadun, MD, PhD has dedicated his career to the further development and future of ophthalmology. With more than 400 peer-reviewed articles, Dr. Sadun is a world-renowned expert that has used his voice to advance the understanding of eye disease. As a leading pioneer in the field, he was one of the many researchers to help create the new science of mitochondrial neuro-ophthalmology. He has dedicated his career to the clinical, psychophysical, and laboratory studies of diseases of the optic nerve, which has changed the way ophthalmologists treat these diseases today.



QUI VU
OPHTHALMOLOGY
Ophthalmologist
PIH Health

Qui Vu, MD is an exceptional young ophthalmologist whose commitment to patient care, innovation, and continuous learning has set her apart as a rising star in the field. As a specialist with PIH Health Eye Care, Dr. Vu provides comprehensive ophthalmic care through treatments involving ocular lasers, in-office minor surgical procedures, and surgical cataract and glaucoma treatments. Throughout her career, Dr. Vu has maintained excellence and a drive to expand knowledge and medical resources to patients. She has published numerous articles in her field and has presented case studies and scientific findings during her post-doctoral training.



NICHOLAS BERNTHAL
ORTHOPEDICS
Chair and Executive Medical Director,
Department of Orthopaedic Surgery
UCLA Health

Through his clinical work, Nicholas Bernthal, MD has developed one of the most sought-after pediatric bone sarcoma practices in the United States. He leads a multi-disciplinary team of medical oncologists, radiation oncologists, pathologists, social workers, and therapists to care for patients in a coordinated, optimized fashion. As department chair, he has initiated a program in adaptive sports which addresses often overlooked equity issues for those with physical disabilities. Dr. Bernthal's research focuses on orthopaedic implant infection and immunology, translational sarcoma biology, and functional outcomes of endoprosthetic implants. He also founded the UCLA Global Orthopaedic Initiative.



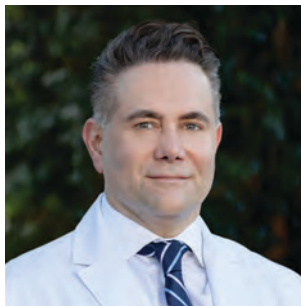
Congratulations

to our Adventist Health Glendale physicians for being selected as 2025 Top Doctors by Los Angeles Business Journal.

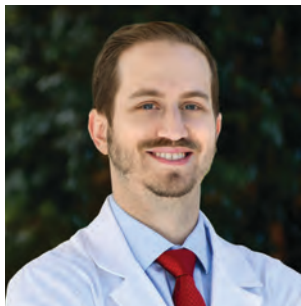
The clinical excellence they provide exemplifies our reputation as a community hospital that delivers world-class care.



Arin Aboulian, MD FCCP
Pulmonology and Critical Care Medicine



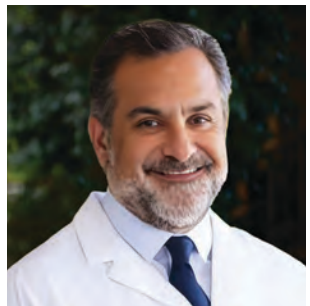
Harry Balian, MD
Interventional Cardiology, Medical Director, Cardiovascular Services



Harout Dermendjian, MD
Vascular Interventional Radiology



Dennis Holmes, MD FACS
Breast Surgeon and Medical Director, Sam & Grace Carvajal Comprehensive Breast Center



Ramyar Mahdavi, MD
Interventional Pulmonology and Critical Care Medicine



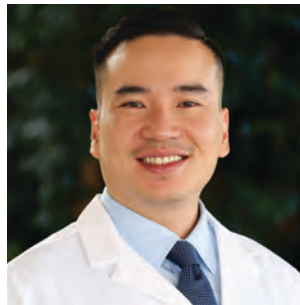
Leah Marsh, MD MS
Gynecologic Oncology



Parhum Namdaran, MD
Cardiology and Interventional Cardiology



James Tabibian, MD PhD FACP
Gastroenterology and Advanced Endoscopy, Medical Director, Advanced Gastroenterology Center



Jekwon Yeh, MD MBA DABR
Radiation Oncology, Medical Director of Radiation Oncology and Vice Chairman Radiation Oncology



Aldene Zeno, MD
Urogynecology and Gynecology



Adventist Health Glendale is a non-profit, 515-bed, tertiary care hospital, nationally acclaimed for advanced clinical programs and patient safety. As the flagship of the Adventist Health System, we have proudly served Southern California for 120 years.

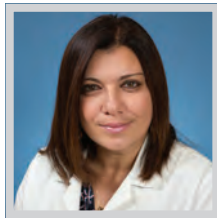
LEADERS OF INFLUENCE: LA's TOP DOCTORS



LUKE T. NICHOLSON
ORTHOPEDICS

Assistant Professor, Orthopaedic Surgery
Keck Medicine of USC

At the University of Southern California, Luke T. Nicholson, MD is the fellowship director for the Joseph H Boyes Hand and Upper Extremity Fellowship, which is the oldest hand surgery fellowship in the country. Dr. Nicholson specializes in the treatment of hand and wrist injuries, arthritis and post-traumatic reconstruction. In addition to complex surgery, he is actively involved in resident and fellow education at both the Keck Medical Center of USC and Los Angeles General County Hospital. He is also the associate residency program director for the orthopedic surgery residency program at USC.



MAIE ST. JOHN
OTOLARYNGOLOGY

Chair of the Department of Head and Neck Surgery, UCLA Health; Professor of Bioengineering; Co-Director, UCLA Head and Neck Cancer Program
UCLA Health

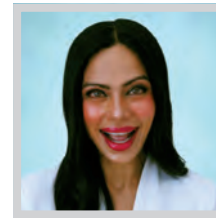
Maie St. John, MD, PhD is a highly renowned surgeon, scientist, and educator. Her clinical expertise is in intraoperative tumor margin delineation in the resection and treatment of head and neck cancers to allow for precision surgery. Dr. St John's laboratory research is translational with a focus on improving therapies and outcomes for patients with head and neck cancer. Her work has led to clinical trials and patent applications and has been consistently funded by the NIH, charitable foundations, and industry. Under her leadership, the head and neck team of specialists has been recognized as national and international leaders in their field.



SARO ARMENIAN
PEDIATRICS

Barron Hilton Chair in Pediatrics; Director, Division of Outcomes Research / Intervention
City of Hope

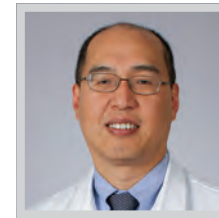
Dr. Saro Armenian is an internationally recognized physician-scientist focused on improving the health outcomes of childhood and adult-onset cancer patients. He is a Leukemia & Lymphoma Society research scholar and has been the recipient of several NIH and other prestigious peer-reviewed foundation grants. Dr. Armenian has also published extensively in high-impact journals. His clinical expertise lies in hematologic cancers. He is the immediate past chair of the Children's Oncology Group Survivorship and Outcomes Committee and has led international efforts to establish research priorities as part of the American Society of Clinical Oncology.



KAVITHA BHATIA
PEDIATRICS

President and Chair, Prime Healthcare Foundation; Chief Medical Officer, Strategy
Prime Healthcare

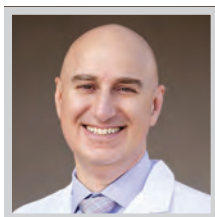
Dr. Kavitha Bhatia is president and chair of the Prime Healthcare Foundation, a not-for-profit public charity dedicated to improving healthcare through its hospitals and educational and charitable initiatives. As lead strategist, Dr. Bhatia develops and implements initiatives that advance the mission and long-term success of Prime. She works with corporate and hospital leaders to align goals, prioritize system-wide value creation, and implement strategic initiatives to ensure Prime's growth, health equity and continued operational and clinical success. She is a fellow of the American College of Healthcare Executives, and serves on the board of directors of the California Hospital Association.



SANG W. LEE
PROCTOLOGY

Clinical Professor;
Chief, Colon and Rectal Surgery
Keck Medicine of USC

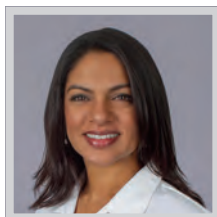
Dr. Sang Lee is one of the nation's leading experts in laparoscopic and endoluminal colon and rectal surgery. He is the lead inventor of an innovative low-cost, lightweight, wearable negative pressure surgical dressing, which has been shown to reduce surgical site infections and improve wound healing. Dr. Lee has also pioneered a non-invasive surgical technique called CELS (combined endolaparoscopic surgery), which removes complex colon and rectal polyps not amendable for colonoscopic removal while avoiding bowel resection. He specializes in organ preservation for benign colon tumors, and sphincter-saving surgery to avoid having a permanent colostomy for colorectal cancers and inflammatory bowel disease.



ARIN ABOULIAN
PULMONOLOGY

Pulmonologist; Critical Care Specialist
Adventist Health Glendale

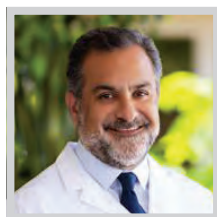
Dr. Arin Aboulian is a fellowship-trained pulmonary and critical care sub-specialist with over 15 years of experience treating interstitial and obstructive lung diseases. Dr. Aboulian helps lead the Intensive Care Unit at the 515-bed acute care hospital. He officially joined the expert care team at Adventist Health Glendale in 2012, choosing to help patients at the very same hospital where he volunteered as a teen. He has been instrumental in bringing cutting-edge technology, such as robotic bronchoscopy, to the hospital. Dr. Aboulian is fellowship-trained in pulmonary and critical care at Cedars-Sinai.



SANTHI KUMAR
PULMONOLOGY

Associate Professor of Clinical Medicine, Pulmonary / Critical Care; Interim Chief, Division of Pulmonary, Critical Care and Sleep Medicine; Vice Chair of Quality and Safety, Department of Medicine
Keck Medicine of USC

Much of Dr. Santhi Kumar's career has focused on ensuring that patients receive high-quality, reliable care through the implementation and scaling of evidence-based best practices. In her leadership roles, she has worked to expand access to expert care across diverse care settings, ensuring patients can benefit from world-class specialists within their own communities. As a frontline leader during the COVID-19 pandemic, she served as the COVID ICU director, developing and implementing protocols that enhanced patient safety and outcomes during an unprecedented global crisis.



RAMYAR MAHDABI
PULMONOLOGY

Interventional Pulmonologist
Adventist Health Glendale

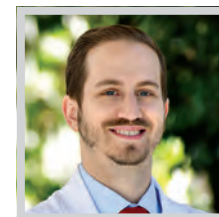
Dr. Ramyar Mahdavi is a pioneer in interventional pulmonology in Los Angeles. Prior to joining Adventist Health Glendale, he established and directed the interventional pulmonology program at Keck Hospital of USC and was the program director of interventional pulmonology fellowship at the Keck Hospital of USC. He was also an associate professor of clinical medicine at USC Keck School of Medicine. With nearly 30 years of experience in medicine, Dr. Mahdavi sees adult patients for issues such as airway diseases, severe emphysema, lung cancer and pleural effusion (water around the lungs). Originally from Iran, Dr. Mahdavi speaks English and Farsi.



PARYUS PATEL
PULMONOLOGY

Corporate Chief Medical Officer
Prime Healthcare

Paryus Patel, MD is the chief medical officer for Prime Healthcare's Region III, IV, V, and VI and corporate chief medical officer for Prime Healthcare. He is a triple board-certified physician with more than 25 years of experience in the fields of critical care medicine, internal medicine and pulmonology. Dr. Patel is a member of Prime Healthcare's senior executive team, reporting directly to the founder, chairman, and CEO. In addition to serving as chief medical officer for Prime Healthcare, Dr. Patel is currently chief medical officer for Centinela Hospital Medical Center, an award winning "100 Top Hospital" located in Inglewood, California.



HAROUT DERMENDJIAN
RADIOLOGY

Vascular Interventional Radiologist
Adventist Health Glendale

Dr. Harout Dermendjian is a board certified vascular and interventional radiologist and UCLA assistant clinical professor. He received his bachelor's degree from the University of Southern California and continued his Trojan career, receiving his medical degree from the Keck School of Medicine of USC. Dr. Dermendjian then completed an Integrated Vascular & Interventional Radiology residency at Kaiser Permanente, Los Angeles Medical Center, where he received specialty training in aortic disease, peripheral artery disease, oncology, women's health, men's health, and pain management. Dr. Dermendjian is a frequent presenter at national vascular and interventional radiology and multidisciplinary conferences.



Healthy you. Happy you.

Building healthy communities.

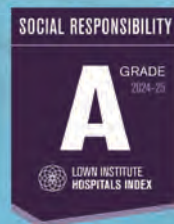
Prime Healthcare is committed to the **600+** communities we serve, enabling families to live their healthiest lives. Our commitment is evident in the more than **600 national clinical excellence, patient safety and social responsibility** awards we have garnered over the last three years - *ensuring health equity for all.*

TRUVEN HEALTH ANALYTICS

10 & 15 TOP HEALTH SYSTEMS



healthgrades.



Congratulations to Prime Healthcare's "Top Doctors" of 2025

Your dedication and commitment inspire us all.



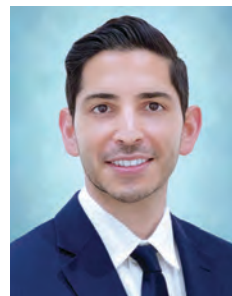
Sunny Bhatia, MD,
MMM, FACHE, FACC, FSCAI
President & Chief Medical Officer,
Prime Healthcare



Kavitha Bhatia, MD,
MMM, FAAP, FACHE
President & Chair,
Prime Healthcare Foundation
Chief Medical Officer, Strategy
Prime Healthcare



Paryus Patel, MD
Chief Medical Officer,
Prime Healthcare
Chief Medical Officer,
Centinela Hospital Medical Center



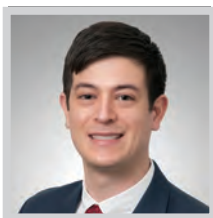
Sridhar M. Reddy, MD,
FACC, FSCAI
Interim Program Director,
Internal Medicine Residency Program
STEMI Program Medical Director,
Epic Cardiology
Centinela Hospital Medical Center



Prime Healthcare

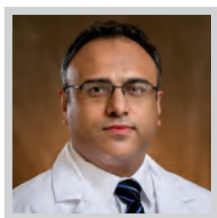
primehealthcare.com

LEADERS OF INFLUENCE: LA's TOP DOCTORS



BRENDAN CERK
RHEUMATOLOGY
Rheumatologist
PIH Health

Brendan Cerk, MD is a board-certified rheumatologist who treats patients with musculoskeletal and autoimmune diseases such as rheumatoid arthritis, osteoporosis as well as more rare conditions such as lupus, myositis, scleroderma. A firm believer that the smallest detail may be the key to making the correct diagnosis, Dr. Cerk takes time to listen to everything his patients tell him in order to accurately determine a diagnosis. As an actively contributing professional in the field of rheumatology, Dr. Cerk presented a quality control study on hydroxy-chloroquine at the American College of Rheumatology (ACR) Convergence 2021.



MONISH ARON
UROLOGY

Professor of Clinical Urology; Vice-Chair for Clinical Operations; Co-Director, Robotic Surgery and Advanced Laparoscopy; Director, Robotic Urologic Oncology Fellowship; Director, Genitourinary Disease Group, Norris Cancer Center
USC Urology, Keck Medicine of USC

Monish Aron MD, MCh, FRCSEd, MBA has dedicated his career to advancing the field of robotic surgery for urological diseases. His practice primarily focuses on robotic cancer surgery, addressing prostate, bladder, and kidney cancers. Dr. Aron's research centers on improving oncologic and functional outcomes through multimodal therapies and collaborative teamwork. He serves as the local lead for a clinical trial studying the role of surgery in improving outcomes and survival in patients with metastatic prostate cancer.

Keck Medicine
of USC



ALEXANDER CHOW
UROLOGY

Urologic Surgeon
PIH Health

Alexander Chow, MD is a board-certified, fellowship-trained urologic surgeon who specializes in advanced robotic surgery for treatment of urological cancers and upper urinary tract reconstruction. He also treats patients with general urological conditions, including benign prostate disease, kidney stones, urinary obstruction, sexual dysfunction, and vasectomies. Before joining PIH Health, he served as an assistant professor of urology and director of robotic surgery at Rush University Medical Center. As an established expert, Dr. Chow has served as a proctor for surgeons across the US in robotic surgery. He has published more than 60 peer-reviewed publications.



CONGRATULATIONS TO
THE LOS ANGELES
BUSINESS JOURNAL'S
2025
LEADERS
OF INFLUENCE:
LA's TOP DOCTORS

VISIONARY RESEARCH

Informs the work our top doctors are doing to improve how people see.

For over 75 years, Doheny Eye Institute has led the way to new treatments for glaucoma, macular degeneration and other causes of visual impairment. Our doctors, partnered with the best clinical researchers, are finding ways to conserve, improve and restore human eyesight. See what advances our doctors are making in Los Angeles.

**Doheny Eye Center UCLA
Arcadia**
622 W. Duarte Rd
Arcadia, CA
626-254-9010

**Doheny Eye Center UCLA
Pasadena**
625 S. Fair Oaks Ave
Pasadena, CA
626-817-4747

Best in the West,
Top 5 in the Nation



Donate now to continue our VISIONary RESEARCH to conserve, improve and restore human eyesight.

LEARN MORE & DONATE AT DOHENY.ORG



Affiliated with **UCLA** Stein Eye Institute

Nurses Weigh In on the Health Care Trends to Watch in 2025

As the nurse practitioner (NP) profession looks ahead to 2025, the American Association of Nurse Practitioners (AANP) has identified five key health trends that will impact the health care system in the coming years.

“As health care trends evolve, the demand for America’s 385,000 licensed nurse practitioners remains high due to their exceptional, patient-centered approach to care,” said AANP president Stephen A. Ferrara, DNP. “Patients nationwide deserve access to high-quality health care, and NPs are experts in various fields, including primary care, elder care, mental health care, substance use disorder treatment and artificial intelligence (AI) innovations. Nurse practitioners are dedicated to providing evidence-based care as the health care landscape continues to change.”

THE TOP FIVE HEALTH CARE TRENDS OF 2025

1. AI Technologies Can Improve Patient Care – Nurse practitioners are leading the way to improve health care access and outcomes for millions of patients and leveraging the potential of new technologies, including AI, to benefit their patients. In their constant pursuit of excellence in health care, NPs are exploring the capability of AI to analyze vast amounts of patient data from remote monitoring devices to allow more proactive interventions and added patient engagement in care.

The potential for AI to automate non-clinical routine tasks, like note-taking and documentation, will allow NPs and other providers to focus even more on patient interactions. Used properly, AI can make a real difference while reducing documentation and administrative burdens. Nurse Practitioners are well-positioned to evaluate and guide the implementa-



tion of safe and effective AI technologies and must be actively involved throughout the entire AI development and integration process to improve patient outcomes.

2. Growing Demand for Elder Care – As the US population ages, the rising demand for elder care requires a growing health care workforce. Every Baby Boomer will be at least 65 by 2030, with the oldest members closer to 85 – meaning one out of every five Americans will be eligible to enroll in Medicare.

At the same time, the NP profession is 385,000 strong, ensuring needed access to care for patients. NPs provide care to seniors in a wide variety of settings, including telehealth and in-home care.

3. Mental Health Integration into Primary Care – NPs and other primary care providers are increasingly integrating patients’ mental health into primary care screenings for both physical and mental health problems, during their visits. Mental health conditions have increased sharply since the COVID-19 pandemic, and more than 122 million people live in areas where access to treatment is limited due to provider shortages.

With a strong focus on whole-patient care, NPs understand the important role mental health plays in the overall well-being of their patients. In addition, increasing numbers of psychiatric mental health nurse practitioners will play a vital role in meeting the nation’s need for diagnosing, treating and managing mental

health conditions.

4. Limited Access to Primary Care Services – More than a quarter of Americans reported they are not up to date on health screenings and immunizations, according to AANP’s “State of Primary Care in America” national survey. The survey also found that nearly one-third of adults, particularly those who are younger, Hispanic or living in rural areas, reported difficulty accessing health care services. Among adults who did see a provider for primary care, nearly a third (31%) turned to telehealth or to convenient care clinics.

This survey echoes AANP’s 2023 survey, which found that more than 25% of respondents had waited more than two months for an appointment with a health care provider. Adopting Full Practice Authority policies removes barriers to care so patients can choose an NP to access preventive screenings and health services, which are essential to improving the health of the nation.

5. NPs Treating Patients with Substance Use Disorders – According to the National Institute on Drugs and Addiction’s 2024 fact sheet, more than 40 million people in the United States had a substance use disorder (SUD), and only 6.5 percent received treatment. More than 100,000 people died from an overdose in 2021. NPs who specialize in SUD and opioid use disorder (OUD) treatment are experts in this addiction crisis, prescribing medications to aid in recovery and ensuring that their patients have access to counseling, behavioral therapy, peer support and other interventions.

Information for this article was provided by the American Association of Nurse Practitioners (AANP). For more information, visit aanp.org.

The Fight to End Parkinson’s Ramps Up

With support from the US Department of Health and Human Services (HHS) Office of the Assistant Secretary for Health (OASH), the National Institutes of Health (NIH) is leading the implementation of the Dr. Emmanuel Bilirakis and Honorable Jennifer Wexton National Plan to End Parkinson’s Act, which was signed into law on July 2, 2024. This follows a delegation of authority from the secretary of the Department of Health and Human Services to the NIH director.

The act establishes a Federal Advisory Council on Parkinson’s Research, Care, and Services and calls for the creation and regular updating of a national plan to prevent, diagnose, treat, and cure Parkinson’s, ameliorate symptoms, and slow or stop progression. In addition to Parkinson’s disease, the national plan will also target other neurodegenerative Parkinsonisms, including multiple system atrophy, corticobasal degeneration, progressive supranuclear palsy, and Parkinson’s-related dementia.

The goals of the act are to coordinate Parkinson’s-related research and services across federal agencies; speed the development of safe and effective treatments; improve early diagnosis; facilitate coordination of care and treatment; reduce the impact of Parkinson’s on the physical, mental, and social health of indi-



viduals living with Parkinson’s and their caregivers and families; and increase international coordination.

In anticipation of implementing this act, NIH is seeking nominations for individuals to serve on the Federal Advisory Council on Parkinson’s Research, Care, and Services that will provide advice on Parkinson’s-related issues, including recommendations for priority actions to be included in the national plan. The council will include two patient advocates, including one individual who is living with young-onset PD; a family caregiver; a health-care provider; two biomedical researchers with Parkinson’s related expertise; a movement dis-

orders specialist who treats people with Parkinson’s; a dementia specialist who treats people with Parkinson’s; and two representatives from Parkinson’s-related nonprofit organizations. Additionally, the council will have representatives from 13 federal agencies that are involved in Parkinson’s research, clinical care, or care services.

The council will be co-chaired by the director of the NIH’s National Institute of Neurological Disorders and Stroke and the associate deputy director for the Office of Science and Medicine for HHS’ OASH.

NIH, the nation’s medical research agency, includes 27 Institutes and Centers and is a

The act calls for the creation and regular updating of a national plan to prevent, diagnose, treat, and cure Parkinson’s, ameliorate symptoms, and slow or stop progression.

component of the US Department of Health and Human Services. NIH is the primary federal agency conducting and supporting basic, clinical, and translational medical research, and is investigating the causes, treatments, and cures for both common and rare diseases.

NINDS is the nation’s leading funder of research on the brain and nervous system. The mission of NINDS is to seek fundamental knowledge about the brain and nervous system and to use that knowledge to reduce the burden of neurological disease. More information about the act as well as the nomination process can be found at ninds.nih.gov.