

CUSTOM CONTENT

JANUARY 20, 2025

# WOMEN OF INFLUENCE: Construction, Engineering & Architecture



**W**ELCOME TO THE SEVENTH EDITION OF OUR ANNUAL SUPPLEMENT HONORING LA'S MOST INFLUENTIAL WOMEN in the construction, architecture and engineering fields. The building industry offers great opportunities for advancement for women.

There are a number of particularly stellar women construction professionals in the LA region and we've alphabetically listed some of the best of them here. Congratulations to the extraordinary, trailblazing women who made this list and thank you for your contributions to the Los Angeles economy...and skyline.

*Methodology: The professionals featured in these pages did not pay to be included. Their profiles were drawn from nomination materials submitted to the Los Angeles Business Journal. Those selected for inclusion were reviewed by the editorial department. The professionals were chosen based on a demonstration of impact made on the profession and on the Los Angeles community.*

## WOI: CONSTRUCTION, ENGINEERING &amp; ARCHITECTURE

**ROSA AREVALO**

Estimating / Outreach Manager  
Webcor

Rosa Arevalo has spent the better part of the last decade cultivating crucial relationships with LA's small, local, and disadvantaged business community on behalf of Webcor at local trade partner outreach events. These events give birth to partnerships with small, local, and disadvantaged businesses for projects and pursuits, culminating in fruitful business relationships that champion LA's small, local, and disadvantaged business community and stimulate the city's economy.

Arevalo has spearheaded dozens of community outreach events throughout Southern California, particularly in LA, on Webcor's behalf. Additionally, in the last year she has volunteered with ACE Mentor Program's LA/OC chapter, Cristo Rey Corporate Work Study Program, and co-led five engineering-focused lessons for LA middle school students.

**GIOVANNA BRASFIELD**

Chief Executive Officer  
Brasfield & Associates LLC

Giovanna Brasfield is chief executive officer of Brasfield & Associates LLC and is a trailblazer in the construction industry, recognized for her transformative leadership and unwavering dedication to advancing DEIA. Brasfield has consistently driven innovation in workforce development, leveraging tools like LCTracker's Workforce Manager to address economic impacts on workforce needs, alleviate labor shortages, and support the career advancement of local communities. Her strategic initiatives have enabled organizations to build more inclusive pipelines for talent, creating sustainable opportunities for traditionally underrepresented groups.

Brasfield played an instrumental role in increasing the participation of minority- and women-owned businesses in large-scale construction projects. Through her efforts, she has fostered equitable opportunities, contributing to industry-wide growth.

**ADAEZE CADET**

Design Principal  
HOK

Over her 21-year career, Adaeze Cadet has shattered barriers and stereotypes, emerging as a trailblazer for Black women in architecture. As design principal at HOK's Los Angeles studio, she plays a pivotal role in defining the studio's creative vision and advancing its design excellence. Her ability to seamlessly transition between project designer and project architect roles ensures outstanding client service across large-scale, confidential entertainment, commercial, and science and technology projects.

Cadet is recognized not only for her technical expertise but for her visionary approach to design, with her work lauded by prominent publications including *Weherville*, *Lonny Magazine* and *Design Milk*. As member of HOK's Global Design Board, she influences the firm's international design direction, championing innovation and inclusivity.

**MIRIAM CAMPOS**

Director of Operations  
GCX

Miriam Campos is at the cornerstone of the GCX's success, seamlessly managing operations and ensuring every project meets the highest standards of efficiency and excellence. Beyond managing tasks, she anticipates challenges, devises proactive solutions, and ensures that every team member has the tools and support they need to succeed.

Campos' accomplishments include developing an innovative onboarding process that make every new hire feel welcomed and supported, as well as implementing systems that enhance transparency and accountability across all levels of the organization. She recently implemented the "Pro Core" system for the company's project management teams, which has been seamlessly adopted, enabling coordinators to enhance office efficiency and improve communication with field teams through streamlined reporting.

**NICOLE CANNON**

Principal  
NCA Studio

The founder of NCA Studio, Nicole Cannon brings over twenty years of expertise in design, construction and management to her practice. As an emerging female leader in the Los Angeles building industry, she has cultivated a community-focused ethos, prioritizing impact on the daily lives of Angelenos, clients, collaborators and staff alike.

Cannon's architectural experience spans hospitality, commercial, education, retail, broadcast and residential sectors. She is passionate about enhancing quality of life through creative problem-solving and innovative design, from initial concept to final construction. She is dedicated to creating remarkable spaces with practical, sustainable and imaginative solutions. Before founding NCA Studio in 2013, she led award-winning, multi-million dollar projects at renowned firms.

**APRIL CHANG**

Design & Project Manager  
Webcor

Design and construction professional April Chang played a major role in the SFO Harvey Milk Terminal 1 Boarding Area B (BAB) project with Austin Commercial, which became the first airport terminal in the world to achieve LEED Platinum and WELL Core certification in 2022. She went on to manage the LAX Terminal Core project and the Taiwan Semiconductor project in Arizona, before moving back to LA to join Webcor.

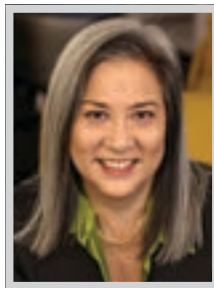
In her role, Chang integrates traditional project manager responsibilities with those of a design manager, given her extensive educational background in architecture. In December 2023, her outstanding contributions to Webcor as an assistant design manager culminated in her promotion to design manager and project manager, a dual role reflecting her vast sustainability and design expertise.

**GINA CHANG**

Principal  
CO Architects

Gina Chang has been at the forefront of healthcare design for more than 20 years. A principal and design team leader at Los Angeles-based CO Architects, she has helped healthcare providers implement innovations that improve patient outcomes and enhance staff wellness.

An in-demand industry speaker and writer, Chang is an authority on biophilic design and its impact on healing. Beyond creating patient rooms that maximize natural light and serene outdoor views of curated landscapes, she considers neuro-responses such as the soothing, mesmerizing power of wind-blown kinetic objects on building facades and neutralizing environmental impact with the nation's first all-electric hospital. She also helped pioneer Universal Patient Rooms, at which providers and equipment maximize comfort, flexibility and ease of care for the patient.

**DONNA CLANDENING**

Vice President; Principal;  
Regional Director of Growth  
AECOM

Donna Clandening's career in the design and construction industry spans over 35 years, during which she has consistently demonstrated an ability to lead complex projects, cultivate interdisciplinary teams and inspire the next generation of industry professionals.

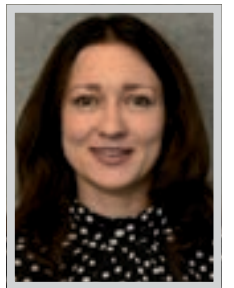
Clandening's extensive career has seen her contribute to diverse and high-profile projects that span multiple sectors, adapting to various roles, from project management to strategic growth leadership. As regional director of growth, she manages multiple markets throughout a wide geographic reach. Her hands-on expertise has consistently translated into measurable success for her clients and communities. She currently serves on the board of directors for the ACE Mentor Program, mentoring high school students to pursue careers in architecture, construction, and engineering.

**CHRISTY COLEMAN**

Senior Associate;  
Director of Design, Hospitality Interiors  
LEO A DALY

Christy Coleman is a Los Angeles-based hospitality interior designer creating integrated, timeless designs for five-star luxury hotels, resorts and restaurants around the world. She is driven by creating hospitality environments that improve and amplify the guest and travel experience in new ways. She has designed for global hotel brands including Kimpton, Ritz-Carlton and Leading Hotels of the World.

Coleman joined LEO A DALY in 2021 and was promoted from a senior interior designer in the Los Angeles studio to director of design for hospitality interiors for the firm. She has led her team in creating interiors for the Ritz Carlton Las Colinas, La Quinta Resort, Aurora Anguilla Resort, Ania Resort and Leading Hotels of the World resort.

**LAUREN COLES**

Associate Principal  
CO Architects

Lauren Coles, associate principal at CO Architects, is a senior project manager on large higher-educational and healthcare projects, including hospital campuses, medical office buildings, health education, academic, student unions, residence halls, recreation centers, and science and technology projects. She is devoted to opening channels of communication among design, regulatory and building industries to elevate and make adaptive architectural solutions to the issues facing architects and the communities they serve. Recently, she oversaw the \$1.17-billion Scripps Health Mercy Campus project in San Diego.

As one of CO Architects' primary colleague mentors, Coles leads efforts to support architecture licensure for all eligible staff. She further fosters staff growth through her involvement in CO's JEDI initiative.

WOI: CONSTRUCTION, ENGINEERING & ARCHITECTURE



**ROSA DELGADO**  
Senior Project Manager  
Clayco

Rosa Delgado began her career working in the healthcare sector, and was co-senior project manager on the team that delivered the Kaiser Permanente San Marcos Medical Center under budget during a global pandemic, drastically improving community health and transforming the patient experience for residents in the region.

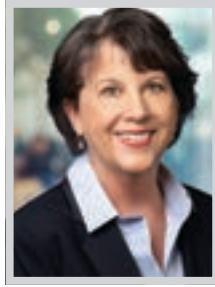
After seamlessly transitioning into the mission-critical market sector, Delgado is currently overseeing a \$400M+ hyper-scale data center project for a 4-building campus in a remote location. Under her leadership, the project has achieved the unprecedented milestone of zero-punch lists at turnovers, setting a new standard for the industry. She fostered a high-performing team, built strong relationships with clients and trade partners, and created a collaborative, positive culture on-site.



**SHEILA E. FIX**  
Partner  
Wood Smith Henning & Berman, LLP

Sheila E. Fix focuses her practice on catastrophic injury, employment, construction, professional liability and toxic tort litigation. She also frequently handles complex actions involving sureties, including claims involving payment and performance bond claims, defaults on construction projects and mechanic's lien release bonds.

Fix's expertise is highly sought after by developers and general contractors nationwide, who rely on her to navigate the intricate landscape of construction disputes. She is consulted before the shovel hits the ground, and sought after years later after projects are complete. Bringing a powerful combination of experience as a partner at WSHB and a former active duty judge advocate in the US Navy JAG Corps, she has tried over 75 cases, including 20 jury trials.



**BARBARA GADBOIS**  
Partner  
Gibbs Giden Locher Turner Senet & Wittbrodt LLP

Barbara Gadbois, is a senior partner at the Gibbs Giden law firm in Los Angeles, with over 35 years of experience in public and private construction law. She concentrates her practice in the development and management of construction projects, including drafting and negotiation of bid and contract documents, procurement issues, public works, competitive bidding requirements, bid protest issues, pre-qualification, project delivery methods, design-build projects, risk allocation in contracts, claims avoidance, and project closeout.

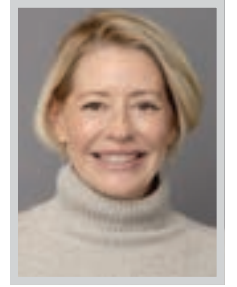
Over the past year, Gadbois' practice focused on transactional and project administration matters for residential development, hospitals, and school construction as well as dispute resolution in the hospitality sector.



**MARY JREISAT**  
Senior Project Manager  
Shawmut Design and Construction

Senior project manager Mary Jreisat has forged a reputation for completing the most complex and important sports venue and hotel renovations in the most condensed timelines. With 11 years of experience in the industry, she manages all the business aspects of preconstruction and construction, from budgeting and contracts to scheduling, logistics, and implementation.

Jreisat has built some of the most impressive projects in Southern California, from adaptive reuse hotel renovations including The Hoxton in DTLA to more than 70 ballpark renovations at Petco Park. Additionally, she dedicates time to volunteering with The Posse Foundation, a comprehensive and renowned college access and youth leadership development program. She is also a mentor for ACE Mentor Los Angeles.



**JULIANNE KNOX**  
Marketing Principal  
HOK

Julianne Knox has consistently demonstrated excellence as a transformative leader in architecture and marketing. With 24 years in the profession and five years at HOK, she has played a pivotal role in driving the strategic direction of the firm's Los Angeles studio. As marketing principal, Knox ensures alignment between local initiatives and the firm's global objectives, enabling the studio to secure landmark projects and establish a robust presence in Southern California.

A member of HOK's Global Marketing Board, Knox shapes the firm's broader marketing strategy, fostering a culture of innovation and inclusivity. She is deeply committed to advancing equity in the AEC industry, as demonstrated by her role in initiatives such as HOK Tapestry, an online platform connecting diverse, high-performing project teams.

# Here's to the game changers

When it comes to redefining the skyline, our women are leading the charge. Congratulations to our own **Kylene Oswald** on her recognition as a finalist at the Inspirational Women Forum & Leadership Awards, and here's to all the women who build.



ON BEHALF OF THE ENTIRE TEAM AT TURNER CONSTRUCTION,

## Congratulations TO BRITTNEY PARKINSON & JAIMIE TURNER

on your well-deserved recognition as Women of Influence in our industry. Thank you for your commitment to Building the Future of Los Angeles and your leadership in advancing the construction industry.



**BRITTNEY PARKINSON**  
Community & Citizenship Director

**JAIMIE TURNER**  
VP & General Manager

# LAWA WOMEN OF INFLUENCE: CONSTRUCTION, ENGINEERING & ARCHITECTURE

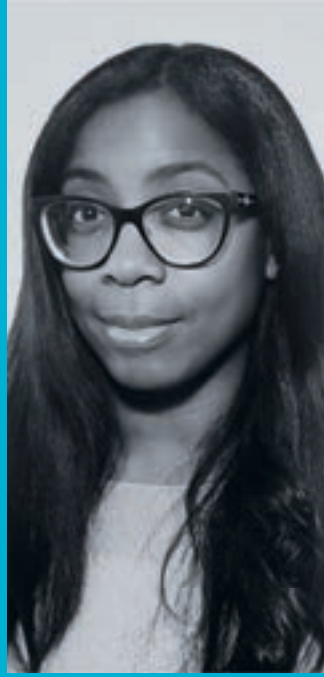
LAWA is committed to advancing diversity, equity and inclusion in aviation, especially with a reimagined Los Angeles International Airport (LAX) on the horizon as part of a \$30 billion Capital Improvement Program that will modernize terminals, provide an elevated guest experience, create a safer airfield, improve access to one of the world's busiest airports and provide the long-awaited connection to regional transportation.

**AMY IMAMURA,  
PSRHA-SCP**



- TITLE: DIRECTOR OF TRANSFORMATION
- YEARS IN THE FIELD: 26
- YEARS AT LAW: 19

**COLLEEN  
CHARLES, P.E., C.M.**



- TITLE: AIRPORT ENGINEER I
- YEARS IN THE FIELD: 14
- YEARS AT LAW: 6

**CRYSTAL LEE,  
P.E., M.S.C.E.,  
ENV-SP, SHRM**



- TITLE: DEPUTY EXECUTIVE DIRECTOR, DELIVERY AND ENVIRONMENTAL SERVICES
- YEARS IN THE FIELD: 19
- YEARS AT LAW: 1

**ROSA BRICE,  
P.E., C.M.**



- TITLE: SENIOR AIRPORT ENGINEER I
- YEARS IN THE FIELD: 33
- YEARS AT LAW: 19

**SHABNAM  
SHAHRIARI,  
P.E., M.S.**



- TITLE: CIVIL ENGINEER AIRPORTS
- YEARS IN THE FIELD: 19
- YEARS AT LAW: 1

**SOPHIE CAI,  
AIA, LEED AP, C.M.**



- TITLE: ARCHITECT
- YEARS IN THE FIELD: 13
- YEARS AT LAW: 6

Our Airport Development Group's vision is to continuously evolve as an industry leader in delivering transformative capital projects, redefining best practices and building world-class teams by attracting and engaging talented people like those we highlight here.

**DEBBIE MILLER,  
LADBS, OSHA,  
CSUDH**



- TITLE: PRINCIPAL CONSTRUCTION INSPECTOR
- YEARS IN THE FIELD: 25
- YEARS AT LAWA: 17

**EVELYN  
QUINTANILLA**



- TITLE: CHIEF OF AIRPORT PLANNING II
- YEARS IN THE FIELD: 27
- YEARS AT LAWA: 25

**GIENELLE LOPEZ,  
C.M.**



- TITLE: ARCHITECTURAL ASSOCIATE II
- YEARS IN THE FIELD: 8
- YEARS AT LAWA: 6

**WENDY DELGADO-  
CRESPO, R.A., C.P.M.**

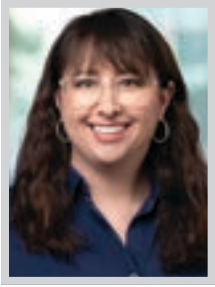


- TITLE: SENIOR ARCHITECT
- YEARS IN THE FIELD: 20
- YEARS AT LAWA: 1

**SCAN HERE TO FIND  
OUT MORE ABOUT  
THE FUTURE OF LAX**



## WOI: CONSTRUCTION, ENGINEERING &amp; ARCHITECTURE

**SARA KORNBLOTT**

*Partner*  
Gibbs Giden Locher Turner Senet  
& Wittbrodt LLP

Sara Kornblatt is a partner whose practice is concentrated in both the development and management of construction projects as well as handling claims and complex litigation matters. She is skilled in drafting and negotiating bid and contract documents for owners, contractors and subcontractors, and handling bid protest and subcontractor substitution issues for both public entity owners and bidders.

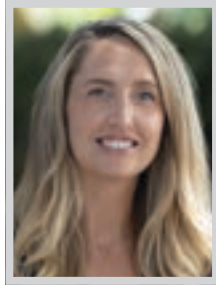
Kornblatt represents clients in both litigation and arbitration and has successfully advocated for her clients several times before the California Court of Appeal. She has served as second chair trial counsel in two multi-million dollar construction disputes, representing a national construction firm and a public entity. Additionally, she is currently serving on several committees in the ABA Forum on Construction Law.

**TARA KRAHE**

*Environmental Engineer;*  
*Section Manager in California*  
Burns & McDonnell

Recently, Tara Krahe assumed the role of operations manager for the Transmission & Distribution Group at Burns & McDonnell, where she supports utility providers and plays a critical role in ensuring reliable power to communities. Her leadership is instrumental in advancing the group's mission of providing resilient power infrastructure and driving innovation across the sector.

During her eight years in the Los Angeles area, Krahe supported a variety of local clients, including Los Angeles World Airports, Metrolink, Southern California Gas and Los Angeles County. Her projects and experience ranged from overseeing remediation systems at sites contaminated with petroleum hydrocarbons and chlorinated solvents to ensuring adherence to regulatory standards.

**KRISTIN LARSON**

*Chief Executive Officer*  
Southwest Industrial Electric

As CEO of Southwest Industrial Electric (SIE), Kristin Larson's leadership and vision has not only transformed the company but also set a benchmark for excellence in the construction and engineering sectors. During her 19-year tenure, she has built a family-owned company into a multi-million-dollar business, achieving significant milestones, including surpassing the \$10 million per year revenue mark.

Under Larson's leadership, SIE has earned recognition as a six-time Inc. 5000 award winner. She has been instrumental in developing strategic initiatives that have enhanced the company's service offerings and operational efficiency. At a time when many companies were forced to close or downsize, she led SIE to hire over 50 new employees and is actively working to grow the team even further.

**AMBER MACAULEY**

*Senior Project Manager*  
Clune Construction

Amber Macauley began her construction career in 1987, quickly advancing from field-work to office management. With experience spanning both electrical and plumbing subcontractors, she has spent the last 25 years on the general contractor side of the industry, bringing a well-rounded perspective to her work.

In 2019, Macauley took over Clune's second Mission Critical project in the Los Angeles office, where she led a team of four. Immersing herself in the field of Data Center construction, she leveraged her expertise to secure additional projects, earning a promotion to senior project manager. She now oversees a team of 11, excelling through her deep technical knowledge of mechanical, electrical and plumbing systems, combined with her ability to balance client needs and team dynamics effectively.

**BRIDGETTE MARSO**

*Architect | Designer*  
Studio UNLTD

Architect Bridgette Marso has helped curate and design some of the most significant properties with her time at world renown architecture firm SAOTA, as well as some of the more lavish restaurants and bars in Los Angeles. She has spent extensive time working with community housing projects with the City of Los Angeles, and Koning Eisenberg architects out of Santa Monica. Her contributions to design and theory have elevated and inspired other women around her to have a bigger voice in places of leadership within the field.

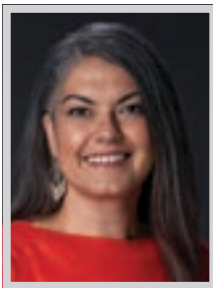
Marso strives to give back to the community through the design applied to shelters, government-assisted housing, and various urban city development projects. Additionally, she has worked with pet placement organizations around Los Angeles to help foster animals.

**JANNINE McDONALD**

*Senior Project Manager*  
Turner & Townsend Heery

Jannine McDonald brings over 32 years of experience in the construction industry. As a licensed architect and LEED professional, she has served as design manager, asset management FSD, and owner's representative responsible for the direction and management of design consultants and coordination with client departments, from the initial project district board approval through the construction and closeout phase.

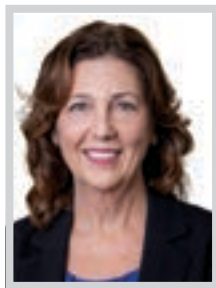
McDonald is experienced in managing large-scale new construction, seismic renovations and innovative outdoor learning projects. She also supervises a team of design professionals through the design review process. She is currently serving as senior project development manager for projects at the Los Angeles Unified School District, where she works to ensure the design process complies with LAUSD's standards and guidelines.

**CARINA MILLS**

*2025 President;*  
*AIA California Senior Associate;*  
*Senior Director, Talent Management*  
RDC-S111, Inc.

Carina Mills is a leader inside and out of the office and serves as senior associate and senior talent director for RDC-S111. Her pivot to talent director in 2019 meant creating a role to lead the career development of architects and designers at all phases of their career, from entry-level to senior management. Her influence at the firm has increased the quality of applicants in recruiting, improved retention rates of staff, and increased career satisfaction and acceleration for staff members.

Mills reignited the firm's associate program, leading an annual leadership training retreat, as well as periodic salons and learning experiences. In 2025, she is serving as the elected role of president of the American Association of Architects (AIA) California chapter.

**SUSAN O'CONNELL**

*Managing Principal*  
AC Martin

Susan O'Connell's career is marked by transformative leadership, innovative design and a deep commitment to excellence in architecture. With over 38 years of experience, she is a managing principal at AC Martin, where she oversees the Higher Education, K-14, Civic, Aviation, and Special Services markets. O'Connell joined AC Martin in 2010 and sits on the Executive Committee of the firm, shaping its strategic direction.

O'Connell's extensive portfolio includes large, complex projects that have reshaped the architectural landscape of California and beyond, including student housing, student success centers, and science and engineering buildings. She holds a leadership position on the Design-Build Institute of America Regional and National Boards, where she advances industry standards and practices for collaborative project delivery.

**KYLENE OSWALD**

*Senior Project Manager*  
Suffolk

In Kylene Oswald's seven-year career she has been promoted four times, and has managed complex mechanical, electrical and plumbing fit-outs for some of the largest and most recognizable projects in Los Angeles, including the AC + Moxy Hotels in the South Park District.

Currently, Oswald is serving as a senior project manager and team lead on a complex luxury resort redevelopment on the beach in Santa Monica. She was tasked with taking increased responsibility in overseeing the finishes, financials and team and trade partner management for the project. Her engineering background and extensive project management work has provided her with a foundation for facilitating clear communication while remaining flexible and adaptable through shifting project conditions and environments.

**BRITTNEY PARKINSON**

*Community & Citizenship Director*  
Turner Construction Company

As community & citizenship director for Turner Construction Company's Southern California region, Brittney Parkinson has advanced corporate social responsibility in the Los Angeles construction market, creating lasting impacts both on and off the jobsite. Since joining Turner in 2007, she has demonstrated a career-long commitment to community engagement, diversity and workforce development.

Starting as an engineer, Parkinson discovered her passion for empowering underrepresented communities through education and economic opportunity and made the transition to the Community & Citizenship department. In 2024, she led Turner's community engagement and UBE outreach program for the successful completion of the \$1B+ Intuit Dome project.

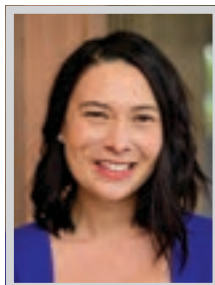
WOI: CONSTRUCTION, ENGINEERING & ARCHITECTURE



**KANAN PATEL-COLEMAN**  
Environmental Project Manager  
Burns & McDonnell

As an environmental project manager at Burns & McDonnell, Kanan Patel-Coleman plays a pivotal role in safeguarding communities' health and well-being. Her expertise in conducting health risk assessments for infrastructure sites ensures that potential risks are identified and mitigated effectively. Through her work, she ensures that companies uphold the highest standards of environmental responsibility, contributing to the safety and sustainability of Los Angeles.

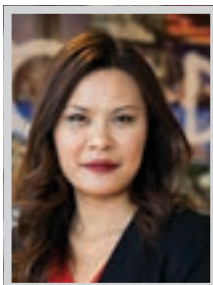
Leaving consulting for a stint in academia as researcher, program manager, and professor at UCLA reflects Patel-Coleman's passion for empowering the next generation of leaders in environmental science and public health. Beyond teaching graduate-level courses, she took the reins and grew a program to enhance environmental health capacity in Mexico and the US.



**JACQUELINE REED**  
Project Development Director  
Latitude 33 Planning & Engineering

Jacqueline Reed, DBIA, is a pioneering force in the engineering and construction industries. As project development director for Latitude 33 Planning & Engineering, she provides critical leadership in the Los Angeles office and oversees company-wide client engagement and strategy. Her 13-year career in the general contracting industry includes positions at Kiewit as a field engineer, progressing to project engineer and finally to superintendent. She transitioned to pre-construction as a senior project manager at Clark Construction.

Reed has worked on projects leveraging various delivery methods, including design-build, and has experience working in many market sector types such as higher education, healthcare, civic, and aviation. Her projects total nearly \$3 billion in development across North America.



**MICHELLE SAQUILAYAN**  
Senior Associate, Project Director  
LEO A DALY

As a senior associate and project director at LEO A DALY's Los Angeles Studio, Michelle Saquilayan, guides teams in shaping critical healthcare environments for US veterans in Southern California. She has been instrumental in one of the most important healthcare projects in Los Angeles, the Veterans Affairs West LA Critical Care Tower and Campus, which most importantly improves care for Veterans in the LA region, but also sits within a prominent, iconic and historic campus near UCLA along the 405 Freeway.

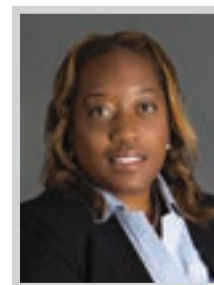
Saquilayan's work also encompasses transitional housing for homeless veterans and a new eye clinic that provides both services and community. Her dedication to advancing healthcare facilities for American veterans is emblematic of her profound commitment to serving an important community.



**BETTY LYNN SENES**  
Project Executive  
DPR Construction

A project executive at DPR Construction, Betty Lynn Senes has built an impressive 30-year career delivering complex, high-impact projects for major institutions, including the University of California, California State University and California Community College systems. Her expertise spans workplace, civic, and higher education facilities, establishing her as a trusted figure in managing the unique demands of academic and workplace environments.

Senes' experience covers every phase of project delivery, and her certifications, such as the Envision Sustainability Professional designation, Associate DBIA, and LEED AP, reflect her commitment to sustainable, high-performance building practices. She has held multiple leadership roles within the Design-Build Institute of America.



**EIMON SMITH**  
Environmental Project Manager  
Burns & McDonnell

With almost two decades of experience, including positions at small organizations and the Los Angeles Unified School District, Eimon Smith plays a crucial role in ensuring clients' compliance with federal and state environmental regulations. Her diverse background includes work with the Los Angeles County Department of Public Works, Los Angeles Metropolitan Transportation Authority, Intermountain Power Authority and Palo Verde Irrigation Water District.

Smith's passion for her work is evident in her involvement in projects ranging from hospital developments to renewable energy initiatives, all aimed at providing essential services and fostering community connectivity. She brings a wealth of knowledge and expertise to her role at Burns & McDonnell.

REGISTER TODAY!

LOS ANGELES BUSINESS JOURNAL  
COMMERCIAL  
REAL ESTATE  
AWARDS  
— 2025

The Los Angeles Business Journal is proud to announce the 30<sup>th</sup> annual Commercial Real Estate Awards.

Join us in honoring the brokers of the most notable transactions in Los Angeles and recognize the most impactful projects completed within the last 12 months.

**WEDNESDAY, FEBRUARY 19**

Biltmore Los Angeles | 6:00 - 8:30PM PST

To register, please visit  
[labusinessjournal.com/events/cre2025](http://labusinessjournal.com/events/cre2025)

PLATINUM SPONSORS



**WOMAN OF INFLUENCE IN CONSTRUCTION, ENGINEERING & ARCHITECTURE**

*Congratulations*  
**JACQUELINE REED, DBIA**

Latitude 33's Project Development Director, Jacqueline Reed, has been honored as one of the Los Angeles Business Journal's *Women of Influence in Construction, Engineering, & Architecture!*

We are incredibly proud of Jacqueline's achievements and her dedication to shaping the future of our industry!

SAN DIEGO | LOS ANGELES | SACRAMENTO | SALT LAKE

WOI: CONSTRUCTION, ENGINEERING & ARCHITECTURE

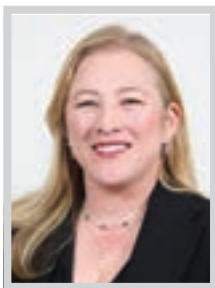


**JAIMIE TURNER**

*Vice President; General Manager  
Turner Construction Company*

Jaimie Turner is currently the vice president and general manager for Turner Construction Company’s Southern California region, and provides operational leadership, business management, and a strategic plan for sustained long-term growth throughout the region.

Turner was promoted to division manager of Turner’s Special Projects Division in 2019 and created relationships with national clients such as Johnson & Johnson, Brookfield Properties and JPMorgan Chase. She helped to triple sales in the region, while also using her knowledge of the local market and business development contacts to help Turner’s Southern California office win an \$80 million ground-up higher education project in downtown Los Angeles. Promoted to business manager in 2023, she uses her management and organizational skills to deliver high-quality projects.



**NATALIA VELASQUEZ**

*Senior Project Manager  
Turner & Townsend Heery*

Born in Colombia and raised in Miami, Natalia Velasquez immigrated to the United States at the age of seven. Despite facing numerous challenges along the way, including cultural adaptation and language barriers, she persevered with unwavering determination, and pursued her passion for design, which led to a career in construction.

Throughout her career, Velasquez has excelled in her role as a project manager, overseeing complex construction projects with finesse and precision. Her leadership style is characterized by her ability to inspire and motivate her team, foster collaboration and navigate challenges with grace and resilience. Her attention to detail, strategic thinking, and effective communication skills have earned her the respect and admiration of her colleagues and clients alike.



**LUCY VILLANUEVA**

*Vice President  
Clayco*

Lucy Villanueva joined Clayco as vice president of Healthcare for California in June 2023, and has overseen numerous large-scale healthcare projects throughout California, representing billions of dollars and millions of square feet in development. Her career trajectory, starting as a project engineer and rising through various roles of increasing responsibility, demonstrates her ability to thrive in challenging environments.

Villanueva served as project executive for Kaiser Permanente’s San Marcos Medical Center, which was completed under budget and ahead of schedule in a mere 27 months despite a world pandemic, supply chain issues, labor shortages and inclement weather. The medical center was able to begin serving patients within five months of completion and was awarded LEED Platinum status.



**BROOKE WALBUCK**

*Sr. Director, Business Development  
Webcor*

After two decades of rapid professional advancement within the AEC industry, from real estate to design to business development, Brooke Walbuck built an exceptionally strong business network that has been key to Webcor’s steady growth in LA’s massive real estate market. Since taking on her current role as senior director of business development in 2022, she dug deep into her list of industry connections to forge valuable partnerships and drive strategic business opportunities that align with the firm’s long-term vision and goals.

Walbuck also prioritizes meaningful engagement with the AEC community. She currently serves on the Board of Directors of the Los Angeles Business Council, the Urban Land Institute (ULI) LA Leadership Council and the ULI LA Innovation Product Council.

CONGRATULATIONS TO  
THE LOS ANGELES  
BUSINESS JOURNAL’S  
2025  
WOMEN  
OF INFLUENCE:  
CONSTRUCTION,  
ENGINEERING &  
ARCHITECTURE

We build spaces  
for your needs  
today and  
tomorrow.

At KPRS, we create inspirational spaces around their purpose and possibilities. From high-rise offices to creative campuses, we execute with a precision and efficiency that returns you to work more quickly and helps you stay flexible for the future. Build with us and work at the speed of our changing times.

Let’s build  
together.



License No. 751130