



A SKILLED BUSINESS PROFESSIONAL – BE IT AN ACCOUNTANT, ATTORNEY, BANKER, REAL ESTATE EXPERT, insurance professional or some other form of trusted advisor – can be one of the key ingredients for any company’s success. Working with an expert who possesses the right skill set can actually help set growth in motion for businesses in virtually any industry.

Demand for such expertise can be competitive. Fortunately, Los Angeles is home to a growing group of such established professionals – and the numbers of young people training to become leaders are up. Currently, in the Los Angeles region, there is no shortage of excellent advisors, many of whom happen to be in their 40s.

Listed alphabetically in this section, you’ll find a selection of Los Angeles’ leading professionals in their 40s, along with some insights about their careers, attributes and accomplishments.

Methodology: The professionals featured in these pages did not pay to be included. Their profiles were drawn from nomination materials submitted to the Los Angeles Business Journal. Those selected for inclusion were reviewed by the editorial department. The professionals were chosen based on a demonstration of impact made on the profession and on the Los Angeles community.

LOI: THRIVING IN THEIR 40s



ASHKAN AFSHARI
Senior Associate Project Manager
WATG

Ashkan Afshari has led a distinguished career in architecture, contributing to a wide range of projects across sectors such as hospitality, residential and education. Since beginning his 10-year tenure at the global design firm WATG, Afshari has played a key role in designing landmark luxury hospitality, residential and urban destinations worldwide.

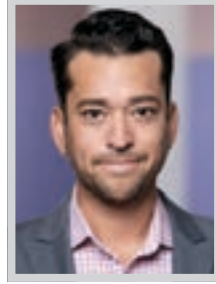
Afshari has worked on prestigious projects such as The Ritz-Carlton Xi'an and The City by Zhongda International in China, exemplifying the blending of creativity and community development. These projects are prime examples of integrating cultural context with architectural excellence, bringing modern developments to regions steeped in history and setting a new standard for hospitality design.



DAVID ALVARADO
Partner
Harvest LLP

David Alvarado is an attorney known for his dedication to excellence in both law and business. Alvarado is passionate about helping institutional owners, operators and developers make the most of their opportunities and bring their business goals to life. As one of Harvest LLP's founding partners, he continues to be the go-to lawyer for several of Southern California's leading real estate companies.

After launching Harvest in 2022, Alvarado continues to focus his practice on purchase and sale, debt and equity financing, development, construction and leasing transactions. He has successfully shepherded numerous major projects to completion with a total aggregate consideration of over \$1 billion in development projects and over \$5 billion in real property acquisition and disposition work.



CARLOS BECERRA
Partner
Nixon Peabody LLP

Carlos Becerra is a skilled and accomplished litigator, trial attorney and strategic advisor who maintains a robust practice tailored toward his clients' complex business, intellectual property, and employment-related needs. He aggressively litigates matters for a broad range of clients in state and federal courts.

Becerra focuses on high-stakes business disputes involving executive mobility, breach of fiduciary duty, labor and employment, intellectual property, and business divorce-related issues, across many industries including healthcare, entertainment and financial services. He also works with hedge funds and private equity firms. Additionally, he has been a featured speaker for healthcare, employee mobility, PAGA, and Americans with Disabilities Act matters at the Los Angeles County Medical Association.



ALEX BLECKSMITH
Associate Vice President
Colliers

Alex Blecksmith is an associate vice president specializing in the sales, leasing and investments of industrial assets within the Los Angeles Basin market. He has spent his near-20-year commercial real estate career honing his skills and building a prolific portfolio at Colliers. With expertise in national tenant expansion and representation of principals, operators and occupiers across a wide spectrum of real estate needs, he has been involved in well over 360 transactions, exceeding more than \$630 million in total consideration.

Blecksmith is part of the Colliers team that facilitated the \$209 million disposition of the 30-acre former Smithfield/Farmer John plant in Vernon, CA, in 2023. He also represented Pickup USA Fitness in their national expansion across 36 leases in 21 states.



ORI BLUMENFELD
Senior Counsel
Levinson Arshonsky Kurtz
& Komsky, LLP

Ori Blumenfeld focuses his practice in all areas of complex bankruptcy and insolvency, corporate restructuring, distressed assets, acquisition and disposition, and related litigation matters. Blumenfeld has represented debtors, trustees, and both secured and unsecured creditors in bankruptcy courts. A substantial portion of his work consists of serving as general or special counsel to federal and state receivers appointed to general equity, Family Code, rents and profits, Health and Safety Code, and regulatory receiverships, as well as bankruptcy trustees, and other fiduciaries.

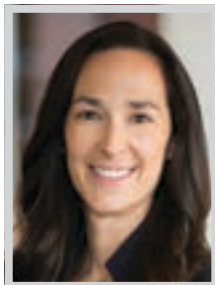
Blumenfeld has significant civil litigation experience defending and prosecuting actions on behalf of receivers and businesses. He also provides legal counsel for partition referees, successor trustees, and provisional directors.



ALI BRODIE
Partner; Co-Chair of Immigration Practice
Fox Rothschild

Ali Brodie is an experienced immigration attorney that businesses turn to when their future depends on securing key international talent, relocating executives or responding to a federal immigration enforcement action. A partner at Fox Rothschild, Brodie co-chairs the firm's Business Immigration and EB-5 Immigrant Investor Services practices. Clients rely on her forward-looking counsel to solve their current challenges and to identify risks that exist just beyond their view, over the horizon.

Brodie advises startups and established companies in connection with visa sponsorship of foreign nationals and permanent residency. She also helps companies assess immigration compliance and train relevant personnel on federal and state employer verification laws with particular focus in the hotel, restaurant, construction and gaming industries.



NICOLE BUFFALANO
Partner
Morgan, Lewis & Bockius LLP

Whether she's negotiating collective bargaining agreements covering thousands of employees or advising management on strategies when a divisive union-organizing campaign arises in the workplace, Morgan Lewis labor and employment partner Nicole Buffalano has established herself as a leading labor and employment lawyer. She represents employers across industries, including universities, global retailers, technology companies and healthcare organizations in traditional labor matters, such as collective bargaining negotiations, arbitrations and in proceedings before the National Labor Relations Board.

Buffalano led the collective bargaining negotiations for the US Soccer Federation that led to the historic equal pay agreement in May 2022. She also serves on the Law360 Sports and Betting Editorial Advisory Board.



ERIKA CANCHOLA
Partner
Ramo Law PC

A powerhouse in the entertainment legal field, Erika Canchola is a partner whose career is shaped by her deep expertise and steady solutions-oriented approach to high-stakes film and television productions. Canchola has built a career balancing her comprehensive legal knowledge with a pragmatic, forward-thinking approach that enables clients to successfully navigate the complex landscape of entertainment law.

Canchola's resume includes serving as outside production counsel for Skydance Television, where she plays a pivotal role in guiding projects from inception through distribution. She optimizes her clients' financial, legal, and business positions, advising on everything from film financing to contract negotiations for notable Skydance productions such as "Reacher," "Foundation," and "FUBAR."



CHRISTOPHER CASAMASSIMA
Partner
WilmerHale

Christopher Casamassima is a distinguished trial lawyer with a career marked by significant accomplishments and contributions to the legal field. His expertise spans complex business disputes involving environmental claims, antitrust, breach of contract, fraud, trade secrets, and other commercial issues. He has achieved notable victories for both plaintiffs and defendants across various industries, including healthcare, entertainment, financial services and aerospace.

One of Casamassima's accomplishments is his work on the Hunters Point Naval Shipyard case, which involves defending Tetra Tech EC, Inc. and its parent company Tetra Tech. Among many other career highlights, he secured total victory for the nation's largest donor-advised fund after a two-week federal bench trial.



JENNIFER CHANG
Education Rights Attorney
The Law Offices of Jennifer Chang

With over a decade of experience in the complex laws of special education, Jennifer Chang has had great success assisting students with disabilities and their families to understand and exercise their legal rights and receive the services they are entitled to under the law. The core of Chang's practice focuses on advocating for students with disabilities and helping families navigate the complexities of special education within the California public school system.

Growing up in an immigrant family, the challenges Chang thought she faced due to learning English as a second language were in fact due to dyslexia, dysgraphia and auditory processing complications. Drawing from these personal experiences, she is a staunch advocate for early assessment in schools, ensuring students with disabilities receive timely access to services.

HUESTON HENNIGAN LLP

Congratulations



PADRAIC FORAN ALISON L. PLESSMAN

Leaders of Influence: Thriving in Their 40s
—Los Angeles Business Journal

LOI: THRIVING IN THEIR 40s

**CHRISTOPHER CHATHAM**

Partner
Manatt, Phelps & Phillips, LLP

Chris Chatham is a leading Hollywood dealmaker, guiding big stars through sophisticated corporate deals and complex litigation matters. His client base operates on several digital platforms with approximately 200 million users and over 2 billion views per month, developing dozens of pilots, renewing multiple shows on network, cable, streaming, and podcasts, and selling more than 60 million books. Over the past decade, he has facilitated deals amounting to an estimated \$10 billion in value.

Recently, Chatham co-lead the Manatt team representing Megan Roup and The Sculpt Society in a lawsuit alleging copyright and Lanham Act violations, breach of contract and unfair competition. The court sided with Roup and dismissed all copyright claims and unfair competition claims in addition to granting Roup's anti-SLAPP motion.

**CHRIS CHO**

EVP; Regional Chief Banking Officer
Hanmi Bank

In the 11 years since Chris Cho joined Hanmi Bank, he has consistently grown the portfolio he manages by 50-100% annually. By 2021, he had increased that portfolio by 3000%, which led to his promotion to executive vice president, responsible for not only the Corporate Banking Center II, but with additional responsibility for overseeing the bank's eastern region, Chicago, and Virginia locations. Together with this team he has grown loan commitments, balances and deposits across all locations.

Cho grew the loan and deposit business portfolio by 50 times over the course of 11 years, despite market conditions or regional challenges. His vision has not only expanded Hanmi's services but also introduced new lines of business, such as the launch of Asset-Based Lending services.

**JP (JEFF) COGHILL**

CEO
Broadmoor Development

Jeff Coghill is a distinguished real estate professional with a 24-year track record in the industry, boasting expertise in the acquisition, repositioning, operation and disposition of distressed residential properties. Coghill's journey began in Cabo San Lucas, Mexico, where he successfully managed the acquisition and renovation of a 54-room beachfront boutique hotel.

In 2011, Coghill became the founder of Broadmoor Development, a firm dedicated to infill multi-family development in South Central Los Angeles and Denver. Under his leadership, the company has excelled in overseeing the acquisition, entitlement process, and either sale or operation of multifamily assets in both markets. His specialization in the construction of 2-10-unit infill projects for resale and operation underscores his commitment to property development and enhancement.

**KATY CONROY**

Partner
Sklar Kirsh LLP

Katy Conroy is a Partner of Sklar Kirsh LLP in the corporate and real estate departments. A former 'big law' M&A attorney, she brings a wealth of experience in complex corporate and real estate transactions. She has deep expertise in sophisticated legal areas such as real estate capital markets, corporate M&A, equity investments, and fund formation, from which she skillfully distills complex concepts into understandable, actionable advice for her clients.

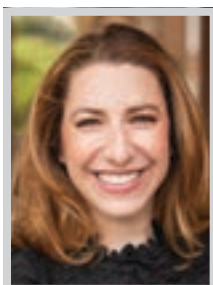
Conroy has a broad corporate practice, advising clients across a variety of industries in various corporate and transactional matters, including mergers and acquisitions, and equity and debt financing transactions. She counsels clients through all phases of the transaction process, including structuring, negotiation, implementation and ongoing post-transaction advice.

**ERIKA CONTRERAS**

Partner; Trial Attorney
Panish | Shea | Ravipudi LLP

Erika Contreras is a trial lawyer and partner at Panish | Shea | Ravipudi LLP and focuses her practice on catastrophic personal injury, wrongful death and motor carrier liability cases. Licensed in California and Nevada, Contreras has obtained millions of dollars for clients, including several eight-figure verdicts and settlements.

In 2023, Contreras was a recipient of the California Lawyer's Attorney of the Year Award for her work on *Sepulveda v. Yucaipa-Calimesa Joint Unified School District* Following, in which she and her partner were able to obtain five non-monetary terms which included increased training for employees to help prevent wrongful deaths like the one from the case. She is also a frequent speaker at a wide variety of legal education seminars and conferences.

**SHARNA DADUK**

Head of Communications
Akido Labs

Sharna Daduk is a strategic communicator with nearly 20 years of experience and a track-record for developing powerful communications campaigns. In her role as head of communications at Akido Labs, Daduk is responsible for designing and managing the company's public profile and building from scratch its media relations strategy. She leads the company's internal communications and keeps its global workforce connected.

Prior to joining Akido Labs, Daduk spent six years at Leaf Group, rising the ranks to become vice president of communications, working closely with its executive leadership team. There, she developed the company's PR process, building a bicoastal team and overseeing all communications for the publicly traded company, including corporate and investor relations and crisis communications.

**JAMES DAUGHRITY**

Co-Founder
SoCal Premier Property Management

James Daughrity is a distinguished commercial real estate broker and co-founder of SoCal Premier Property Management. With an expertise in leasing, acquisitions, dispositions, consulting, and development, Daughrity has made significant contributions to the real estate industry, having closed approximately \$89 million in transactions in the past two years alone, with an additional \$15-20 million actively in the pipeline. He also plays an integral role in the new development of Stocker Street Creatives, a state-of-the-art campus designed to fuel the creative industry through studio and sound production.

A relationship-builder and community advocate, Daughrity specializes in properties within Opportunity Zones and is deeply involved in the development surrounding the Crenshaw/LAX Transit Project.

**ALEXANDER DeGOOD**

Partner
Cox, Castle & Nicholson

Alexander DeGood is a leading California land use attorney who specializes in zoning matters, environmental compliance, and land use litigation. He works across various industries, representing residential, commercial, and industrial property owners, as well as non-profit institutions.

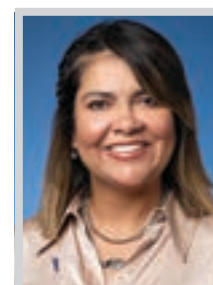
DeGood's robust land use litigation practice includes defense of all project types, from residential to alternative energy. In addition, he represents developers in advancing their rights under California's housing laws, including bringing litigation against agencies that improperly refuse to approve housing projects. Recently, DeGood secured entitlements for a large private school master plan, wrote adopted state legislation providing for by-right operation of thrift retail, and protected development rights of a property facing comprehensive historic designation.

**TYRONE DINNEEN**

Financial Advisor
Northwestern Mutual

In 2003, Tyrone Dinneen began his 12-year career with After School All Stars, an organization focused on closing the opportunity gap for students in low socioeconomic areas. Due to his expansion efforts, the program grew from four schools to over 60 by the time he left.

Dinneen's desire to find meaningful work led him to join Northwestern Mutual. His goal was to continue helping professionals working in the non-profit space who lack access to financial planning. As time progressed, he expanded his client base to begin working with business owners and tech professionals. By aligning knowledge of employer benefits with strategies around tax efficiency, wealth building, and wealth preservation, Dinneen and his team create the ultimate value for their clients.

**GLORIA DOMINGUEZ**

VP; Branch Manager
City National Bank

Gloria Dominguez, originally from Colombia, moved to the US at age eight. Today, she has more than 25 years of financial service industry experience, as vice president and recently appointed branch manager of City National's forthcoming new branch in Whittier, which is scheduled to open in January 2025. Prior to her current role, she served as the branch manager in Hollywood for three years.

When Dominguez joined City National in 2021, she had the opportunity to join the colleague resource group, Latino Community Network. She started as co-chair of the philanthropy arm of the group, and has provided educational seminars in person and virtually, on topics such as lending, access to capital, wealth building, cyber and wire fraud.

CHRISTIE'S
INTERNATIONAL REAL ESTATE
SOUTHERN CALIFORNIA

HERITAGE OF LUXURY

CHRISTIE'S INTERNATIONAL REAL ESTATE SOUTHERN CALIFORNIA

CALIFORNIA'S #1 LUXURY BROKERAGE

CHRISTIESRESOCAL.COM

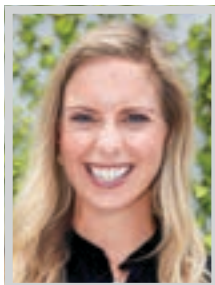
LOI: THRIVING IN THEIR 40s

**ERIN DONOVAN**

Partner
Musick, Peeler & Garrett LLP

Erin Donovan is a partner at Musick Peeler, where her principal practice areas include general civil litigation, business litigation, insurance coverage and defense litigation, and probate litigation. She has participated in civil and probate trials, and as lead counsel, has successfully obtained a defense award at arbitration. Donovan has served as counsel for a variety of businesses, academic institutions, universities and charter schools.

Recently, Donovan successfully resolved two personal injury claims against a wireless network operator and telecommunications company via mediation, one with a summary judgment motion pending in 2024. She also resolved two personal injury claims against a wireless network operator and telecommunications company without mediation in 2024 with trial dates pending in 2024.

**CHRISTY EVANS**

Obstetrician & Gynecologist;
Lead Physician
Almond OBGYN

Head physician at Almond OBGYN, Christy Evans spearheads the company's mission to address the pressing women's health crisis. She is committed to providing compassionate, accessible, and high-quality healthcare within a thoughtfully designed environment that is as welcoming as it is healing. Dedicated to empowering patients, Evans prioritizes trauma-informed care, ensuring every patient feels seen, respected and educated about their health.

Evans led the launch of innovative Group Pregnancy Care and PCOS programs, which integrate the expertise of health coaches and providers to take a root-cause approach to long-term health goals. Evans is also the co-founder of NewDAWN Africa, an organization dedicated to improving maternity care and providing gynecologic surgeries in Nairobi, Kenya.

**JEREMY EVANS**

CEO; Founder; Managing Attorney
California Sports Lawyer

Jeremy M. Evans is an award-winning attorney and industry leader based in Los Angeles and Newport Beach. He is an expert in best practices and negotiations in entertainment, media and sports. He specializes in contractual and intellectual property negotiations with a focus on dealmaking, representing clients that range from Fortune 500 corporations to entrepreneurs, advertising and production companies, studios, agencies, talent, and more.

Evans is the CEO, founder, and managing attorney for California Sports Lawyer. He writes a weekly column and hosts the company podcast, which focuses on interesting legal angles in entertainment, media, and sports law. Evans previously served as president of the California Lawyers Association, and currently serves as president of the California Lawyers Foundation.

**JONATHAN FITZGARRALD**

Chief Executive Officer
Equinox Strategy Partners

Jonathan Fitzgarrald looks to undervalued professionals, untapping their potential to grow revenue, market visibility and their practices. Fitzgarrald's proprietary approach adapts a Moneyball strategy by recognizing and coaching traditionally overlooked, highly skilled professionals in legal, financial, accounting and professional services firms.

In 2015, Fitzgarrald established Equinox Strategy Partners to advise professionals nationwide to tap into their own potential to generate revenue. He is a longtime leader of the Legal Marketing Association, and he served on the board of advisors of the Legal Sales and Service Organization, Inc. He currently serves on the board of Raise A Child, a non-profit devoted to preparing prospective parents for the foster-to-adopt program.

**PADRAIC FORAN**

Partner
Hueston Hennigan LLP

A creative and forceful litigator, Hueston Hennigan partner Padraic Foran focuses on complex civil litigation, including fraud, trade secret and professional liability matters in California and across the country. Foran has guided a wide variety of clients — from Southern California Edison, Epic Games, Bausch Health, and Endo Pharmaceuticals, to Qualcomm, SpaceX, Tesla, and GlaxoSmith-Kline — through sensitive, high-stakes litigation. He also advises corporate officers and directors in a broad range of industries, such as telecommunications, real estate and financial services.

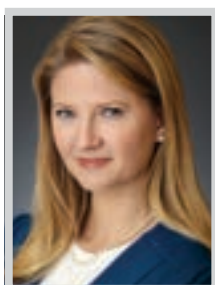
Foran is an integral member of teams on many of Hueston Hennigan's highest profile matters, including representing Epic Games in a series of suits that are testing the bounds of tort law as it applies to publishers and developers of video games.

**BRIAN FORD**

Partner
Kirkland & Ellis LLP

Brian Ford is a corporate partner at Kirkland & Ellis and co-leader of the Debt Finance practice in Los Angeles. Ford focuses his practice on complex financing transactions for private equity firms, commercial lending institutions, portfolio companies, hedge funds, asset managers, alternative capital sources and other private and public companies.

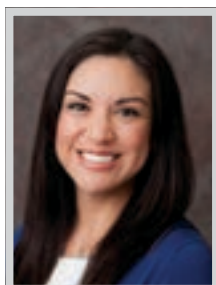
In the past year, Ford has worked on transactions totaling more than \$36 billion. Such transactions include the negotiation, structuring and documentation of secured and unsecured financings, including senior, mezzanine and subordinated debt transactions, acquisition financings, dividend recapitalizations, debtor-in-possession, exit financings and restructurings. Additionally, Ford serves on the board of trustees of nonprofit leader All4Kids, a role he has held for more than five years.

**CAMERON W. FOX**

Managing Partner; Chair, Los Angeles Office; Co-Chair, Los Angeles Region; Chair, Traditional Labor Practice Group; Employment Law Department Partner
Paul Hastings LLP

As the chair of the Paul Hastings LLP Los Angeles Office, Cameron W. Fox oversees and guides various departments, including litigation, corporate, labor & employment, and tax, as well as the office's business development, recruiting and civic responsibility initiatives. She was recently appointed the co-chair of the Los Angeles Region.

Fox is sought out by employers across the country for her expertise as a trial lawyer, traditional labor lawyer, and adviser. She has successfully defended her clients in jury and bench trials, arbitrations, and before state and federal appellate courts. She also has a passion for mentoring and training younger lawyers, and in 2020, won Paul Hastings' global award for Coach and Mentor of the Year.

**CYNTHIA FRAUSTO**

Director, Marketing and Public Relations
Antelope Valley Medical Center

Cynthia Frausto has demonstrated exceptional leadership and strategic foresight across a 28-year career in marketing, with significant achievements in economic development, healthcare and non-profit sectors. Known for her ability to transform complex marketing challenges into strategic initiatives, she has developed and executed numerous campaigns, cultivated community partnerships, and designed public relations plans with measurable impact.

Frausto joined Antelope Valley Medical Center as the marketing and public relations director during the height of the global COVID-19 pandemic, and launched the hospital's redesigned website while leading a comprehensive rebranding that redefined the 420-bed hospital's public image with a new name and visual identity. She currently oversees all aspects of the hospital's brand strategy.

**RICHARD GALOFARO**

Co-Managing Partner
Musick, Peeler & Garrett LLP

Richard Galofaro serves as co-managing partner in the Musick, Peeler & Garrett Los Angeles office. He focuses his practice on estate and gift tax planning for high-net-worth individuals and families, the administration of trusts and estates, and probate matters. Galofaro has experience structuring and implementing sophisticated transfer tax planning techniques, including sales to defective grantor trusts, grantor retained annuity trusts, irrevocable life insurance trusts.

Galofaro also advises clients with respect to business and succession planning, charitable giving, and the establishment and administration of private foundations. He recently counseled multiple sets of clients regarding the use of their remaining estate/gift tax exemption considering the 2026 tax law changes by which there will be a severe reduction of exemption amount.

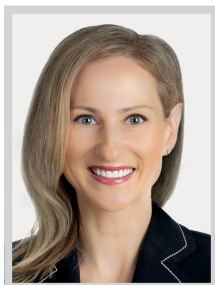
**NADIA GELLER**

Principal and Managing Director
Nadia Geller Designs

Nadia Geller is the principal of Nadia Geller Designs and founded the company in 2005. Through the past 19 years, she has formed a design firm that not only works across the full spectrum of real estate, but also cultivates a culture that supports forward-thinking, solutions-oriented female employees.

Geller's first corporate job was at design mecca ABC Carpet and Home in New York, a well-known leader in the furniture industry. For her quality of work and appreciation of interior design, she was cast on TLC's home improvement reality show While You Were Out where she appeared in 29 episodes over two years. Now, Geller has an average roster of 20 projects spanning large ground up multi-family, hospitality, student housing and residential projects.

LOI: THRIVING IN THEIR 40s

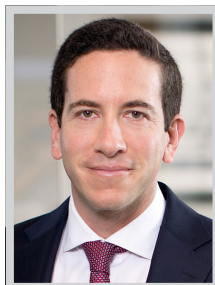


EVELINA GENTRY

Partner, Litigation
Akerman LLP

Evelina Gentry is a litigator at Akerman LLP, focusing on high-stakes commercial litigation, corporate disputes, and bankruptcy litigation, with substantial experience representing private equity firms and financial institutions. She has unique expertise in bankruptcy matters originating from her clerkship and her deep understanding of financial affairs.

Gentry skillfully assesses key facts and legal principles early on, allowing her to craft comprehensive, creative and tailored strategies. She has secured numerous victories, representing a wide range of industries, including financial services, retail, oil and gas, healthcare, and real estate, and has played a key role in bankruptcy litigation matters, including fraudulent transfers, Ponzi schemes and preference actions.



ROBERT GLASSMAN

Partner; Trial Attorney
Panish | Shea | Ravipudi LLP

Robert Glassman is a trial lawyer and the youngest partner at the nationally recognized plaintiff's personal injury law firm Panish | Shea | Ravipudi LLP. He has spent his career representing individuals and families who have suffered catastrophic injuries or the loss of a loved one.

Glassman has recovered hundreds of millions of dollars for his clients, but among his most successful career accomplishments are the non-monetary results he has obtained through his high-profile school injury cases, which led to significant reforms at the school districts where the tragedies occurred and helped to establish new child safety laws in California. He also represents survivors of sexual abuse, including 'Jane' who filed suit against her abusers in the high-profile case against Jeffrey Epstein and Ghislaine Maxwell.



NICOLE HOEKSMAGORDON

Partner
The Sohagi Law Group, PLC

Nicole Hoeksma Gordon is a partner at The Sohagi Law Group who advises public agencies on complex environmental and land use matters at the administrative, trial and appellate level. She focuses her practice on complex issues and projects under the California Environmental Quality Act, the National Environmental Policy Act, the federal and California Endangered Species Act, and Planning and Zoning Laws.

As the 2018-2019 chair of the Executive Committee of the Environmental Law Section of the California Lawyers Association, Gordon is at the forefront of the environmental law issues with which public agencies must grapple. She is also a frequent lecturer on environmental matters at various public and private workshops.

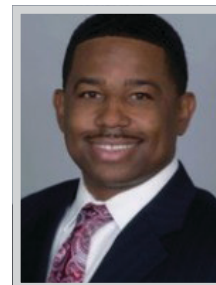


GALI GRANT

Partner
Glaser Weil

Gali Grant is an experienced trial attorney and partner in Glaser Weil's litigation department. Grant maintains a diverse practice that includes cases involving high-stakes corporate and financial disputes, complex contract disputes, intellectual property and employment disputes. She represents a range of clients, including large and small businesses, financial institutions, investment funds, high-net-worth individuals, corporate directors, hotels and municipalities.

Whether Grant is preventing litigation from ever being filed, directing settlement efforts or stepping in as lead trial counsel, her clients trust her to bring their matters to a successful conclusion. In many of her cases, she navigates not only the legal strategy but also the reputational implications of the matters.



JABARI GRANT

VP; Business Community Manager
City National Bank

With more than 25 years of experience in the financial services industry, Jabari Grant is a seasoned leader who has been instrumental in the successful launch of City National Bank's Small Business Ladder Up Program, a special purpose credit program with flexible lending and eligibility criteria. Grant serves as the business community manager in LA County and works with community partners to help small business owners connect with resources aimed at helping them grow.

Grant believes that a large barrier preventing small business owners from accessing the resources they need is a lack of awareness about lending standards and the programs available to them. He actively partners with local non-profit small business advocacy organizations to facilitate financial literacy workshops and seminars.

Holland & Knight is proud to celebrate our colleague

Vivian Lee Thoreen

for being named one of *Los Angeles Business Journal's*
Leaders of Influence: Thriving in their 40s.

We join in recognizing Vivian's exceptional leadership, dedication to her clients and remarkable achievements in the legal profession.

Holland & Knight

www.hklaw.com

Los Angeles, CA | +1.213.896.2400

Copyright © 2024 Holland & Knight LLP All Rights Reserved



LOI: THRIVING IN THEIR 40s

**CHRISTOPHER GRAVELL**

Attorney

Frاندzel Robins Bloom & Csato, L.C.

Christopher E. Gravell joined Frاندzel in 2016 in the Real Estate Transactions Group. His practice focuses on commercial and real estate loan documentation for banks, lenders, and other financial institutions. Gravell is also well versed in real estate transactions, loan restructures and real property sales. Prior to joining the company, he was a litigation attorney and legislative counsel to a United States Representative.

Gravell works with numerous large regional and national financial institutions. He is continuously interested in helping clients reach their goal in specific transactions, often through educational presentations or meetings that address significant changes in law and practice. He has secured documentation for over \$100 million in loans for refinancing apartment complexes, acquisition of properties and the construction of several warehouses.

**MICHAEL HARBOUR**

Partner

Irell & Manella LLP

Michael Harbour has been a core member of legal teams that achieved incredible results for clients and earned accolades from legal media, representing clients in precedent-setting appeals in cases before the US Supreme Court, the California Supreme Court and the US Court of Appeals for the Ninth Circuit.

Harbour has experience in all stages of litigation, with a practice that spans diverse areas of law, including antitrust, intellectual property, securities litigation, false advertising and unfair business practices, and class actions. Prior to joining Irell & Manella, he clerked for the Hon. Mary M. Schroeder of the US Court of Appeals for the Ninth Circuit. He currently serves on the firm's Hiring Committee and is co-chair of the Summer Committee.

**LAURA HARWOOD**Deputy Director, Interim Housing;
Chief Programs Officer

Hope the Mission

Laura Harwood stands out as an inspirational leader in addressing homelessness in Los Angeles County. Harwood's most successful career accomplishments to date include her rapid ascension through leadership roles at Hope the Mission, culminating in her current position as chief programs officer. In this role, she oversees all of the organization's interim sites, including Inside Safe Tiny Homes, Family, and Individual Residential programs.

Under Harwood's leadership, the Inside Safe program, a Mayor's Initiative focused on providing immediate housing solutions to encampments, has successfully transitioned more than 200 individuals off the streets in the last year. The program saw a significant increase in permanent housing transitions, from 7% in FY 2022-2023 to 35% in FY 2023-2024.

**CHRIS HENNESSY**

Senior Director

Shawmut Design and Construction

With roots in hospitality, Chris Hennessy is focused on providing the best client experience in his role as senior director of Shawmut Design and Construction's West region, leading the pursuit and execution of projects across hotels, restaurants, life science, commercial, sports venues, museums, and high-end residential. Entrenched in the Southern California hospitality industry for more than 15 years, Hennessy has worked on both the client and operations side, leveraging the two experiences to provide an approach to the construction process that not only considers all technical aspects, but the intricacies of the end user experience, as well.

Hennessy's book of business includes Nobu Hospitality, Four Seasons Hotels and Resorts, Oak View Group, Levy Restaurants and Soho House.

**BRAD HERREMA**

Shareholder; Chair,

Natural Resources Department
Brownstein Hyatt Farber Schreck

Brad Herrema, shareholder and chair of Brownstein's Natural Resource Department, brings more than 20 years of experience handling the most significant and complex water matters in California, Nevada and across the West.

Whether developing groundwater management strategies, identifying water and agricultural investment opportunities, defending water rights or securing industrial and recreational water supplies, Herrema understands how to synthesize clients' unique business needs with market realities, keeping key stakeholders' concerns in mind. He serves as special water counsel to private corporations, private equity funds, renewable energy developers, water purveyors, resorts and golf courses, mining companies, investor-owned utilities and landowners.

**JANE HINTON**

Partner

Hunton Andrews Kurth LLP

With European and global banking roots, Jane Hinton possesses keen insight into the complexities of real estate deals and the critical issues for their stakeholders. As a partner in the Los Angeles office of Hunton Andrews Kurth LLP on the Capital Finance & Real Estate Team, Hinton maintains a nationwide 360-degree real estate practice that includes representing clients in acquisitions, dispositions, leasing and portfolio property management, and joint ventures as well as lending transactions at every level throughout the capital stack, with a focus on structured debt and equity transactions.

Hinton is experienced in all types of asset classes, including office, construction, retail, mixed-use, hotels and resorts, multifamily and industrial. She advises both lenders and borrowers in complex mortgage financings.

**PHILIP HOSP**

Partner

Foley & Lardner LLP

Phillip Hosp is a distinguished partner in Foley & Lardner's business litigation & dispute resolution practice. Hosp has consistently demonstrated exceptional prowess in the legal field, securing victories in courtrooms, arbitrations, and settlement negotiations. His unwavering commitment to understanding clients' businesses and objectives has allowed him to provide pragmatic, creative and strategic advice to a diverse range of financial institutions.

For over a decade, Hosp has been at the forefront of representing clients in complex commercial litigation, handling cases involving fraud, unfair or deceptive acts or practices, securities fraud, lender liability, and consumer protection claims. He has successfully defended clients in high-stakes investigations and litigation.

**RAYMOND HUA**

Partner

Yukevich | Cavanaugh

Raymond Hua is an equity partner at Yukevich Cavanaugh and manages a team of attorneys and paralegals in his practice. Throughout his more than two decades of legal practice, Hua has become a respected leader and has achieved a strong reputation as an experienced civil litigator and trial attorney in the areas of products liability defense, high exposure defense litigation and business litigation.

Hua has represented his clients in complex litigation matters including federal multidistrict litigation and judicial council coordinated proceedings. He has handled complex and specialized practice areas including water rights and environmental contamination cases. He has also handled high exposure quadriplegic injuries, traumatic brain injuries and wrongful death cases for a vast range of clients, from manufacturers to school districts.

**BRADFORD HUGHES**Member; Leader, Transportation
Practice Group
Clark Hill PLC

A dynamic leader at Clark Hill, Bradford Hughes leads the firm's Transportation Practice Group and is deputy member-in-charge of the Los Angeles office. Hughes also serves as Clark Hill's litigation business unit leader, directly responsible for the recruitment and retention of attorneys across the firm's 31 offices.

Hughes represents clients in state and federal courts across the United States in complex litigation related to business disputes, goods transportation and catastrophic injury claims. He counsels businesses regarding California's complicated litigation and regulatory framework with a focus on helping clients identify and mitigate risk. In addition to leading a team of more than a dozen attorneys managing hundreds of active litigations, he serves as chair of the Trucking Law Committee for the Defense Research Institute.

**MALVE ILDEFONSO**Assurance Principal
BDO USA, P.C.

An assurance principal for BDO Los Angeles' Asset Management practice, Malve Ildefonso has built a reputation as one of California's leading public accountants over the course of her two-decade career. With a particular focus on alternative investment companies, she is committed to delivering high-quality audits while also demonstrating strong leadership and a dedication to mentoring within her teams.

Ildefonso oversees numerous audit engagement teams and serves a broad range of clients across different sectors, including registered investment advisers, private equity funds, real estate funds and employee benefit plans. Her technical expertise in areas such as fair value market-based measurements, financial statement disclosures, SEC filings, and financial reporting is highly valued by her clients.

LOI: THRIVING IN THEIR 40s



MOLLIE KAISER
Private Wealth Advisor
Strategic View Advisors

Mollie Kaiser has been in the wealth management industry for over 15 years, bringing extensive experience from both Bernstein Global Wealth Management and Credit Suisse, where she handled a broad range of advising, planning, investment management and client service responsibilities. Currently, Kaiser is responsible for providing clients with advice and guidance, and contributing to broad organizational strategy. She also sits on several of the company's committees, including the financial planning and investment committees.

Kaiser is a member of the South Bay Estate Planning Council, Estate Planning and Trust Council of Long Beach, C-Sweet, ProVisors, and the Financial Planning Association. Kaiser also sits on the board of Housing Works, an organization devoted to ending homelessness in Los Angeles County.



SHAWN KERENDIAN
Managing Partner
Keystone Law Group, P.C.

Managing partner Shawn Kerendian founded Keystone Law Group, P.C. in 2014 with the ambitious vision of focusing his practice solely on probate law. Recognizing a tremendous generational wealth transfer was looming and many firms specializing in probate were actually estate planning firms, Kerendian saw an opportunity to fill this gap and seized it.

Keystone is now about 10 times the size it was when it was established, and has become the largest probate firm in California. Under Kerendian's leadership, the firm has vigorously pursued claims against estates and trusts, successfully representing heirs, beneficiaries and creditors in cases involving potential recoveries exceeding \$500 million and advising fiduciaries on the protection and management of assets totaling over \$1.5 billion.



ANNE KIM
Partner
Kirkland & Ellis LLP

Anne Kim is a partner in the Los Angeles office of Kirkland & Ellis LLP. Her practice focuses on advising public and private companies in both taxable and tax-free mergers and acquisitions, divestitures, cross-border transactions, recapitalizations and the formation of joint ventures.

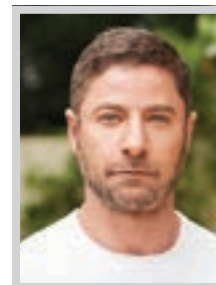
Kim has significant experience representing premier private equity firms and asset managers in all types of transactions, including secondaries transactions, liquidity solutions for private fund sponsors and asset management M&A. She also advises clients on the tax aspects of capital markets transactions and debt restructurings. She has experience with diverse industries that are on the pulse of the culture in California, including technology, energy, retail, entertainment, media and insurance.



TAISUKE KIMOTO
Partner
Covington & Burling LLP

Taisuke Kimoto co-leads Covington's Japan Practice, which advises several of Japan's largest corporations as well as individuals, trade associations and governmental agencies on their most sensitive and complex legal challenges worldwide. Drawing upon his long-standing relationships and robust business and legal networks in Japan, Kimoto serves as an ambassador of the firm to the Japanese business community and to global companies with interests in the Japanese market.

Kimoto is a corporate lawyer whose practice focuses on M&A transactions, general corporate matters, and real estate transactions. He also serves as an outside US general counsel for several Japanese companies and in that capacity provides advice in many areas, including dispute resolution and employment.



AARON KIRMAN
CEO & Founder
Christie's International Real Estate
Southern California

Christie's International Real Estate Southern California CEO Aaron Kirman credits his success to his extensive marketing and advertising techniques, partners, industry understanding, exclusive contact base, and love of luxury sales. Developers, architects and designers approach Kirman before construction and completion to use his extensive track record of success to assure the design, architecture and plan will attract high-end customers.

Kirman's black book of billionaires and expertise in selling exclusive properties have helped him achieve record prices in Beverly Hills, Bel Air, Hollywood Hills, Santa Monica and Malibu. A leading figure in the luxury real estate market for 25 years, he has set record sales in Southern California.

LOS ANGELES BUSINESS JOURNAL

2024 LEADERS OF INFLUENCE

Thriving in Their 40s



Dan Miller



Amnon Siegel



MILLER | BARONDESS LLP

Trial | Appeal | Arbitration

millerbarondess.com

LOI: THRIVING IN THEIR 40s

**BETHANY KRISTOVICH**

Partner
Munger, Tolles & Olson LLP

Bethany Kristovich is known for her ability to resolve bet-the-company cases, having led defenses against multimillion and billion-dollar claims brought against clients from various industries. A go-to lawyer in times of crisis, she represents some of the nation's largest companies, private equity firms and law firms in their most sensitive matters.

Kristovich brings a trial-lawyer's sense to developing a case strategy, and has counseled clients through appeals of adverse judgments, including arguments at the California Court of Appeal. She is co-chair of the firm's class action practice group and professional liability defense group. Since joining Munger Tolles, Kristovich has had a counsel-table role at numerous high-stakes trials and arbitrations and been called upon to defend against numerous applications for preliminary injunction.

**VERONICA LAH**

Partner
Manatt, Phelps & Phillips, LLP

Veronica Lah is a partner in Manatt's cross-industry Capital Markets and M&A practices. She is a highly sought-after adviser representing public and private companies, investors and financial institutions in corporate transactions spanning numerous industries, including financial services, entertainment, technology, consumer products and healthcare. Lah focuses her practice on capital markets, securities, mergers and acquisitions, joint ventures, corporate governance and board advisory services, and other corporate and financial transactions.

Lah also provides counsel on formation, joint venture and other corporate matters. She serves as business unit leader of Manatt's Transactional Resources Team and as a member of Manatt's Diversity Subcommittee. She also serves on the Capital Markets Editorial advisory board for Law360.

**ALEXIS LAING**

President & CEO
Laing Companies

Alexis Laing, president and CEO of Laing Companies has nearly 20 years of experience representing affordable housing developers and financiers on complex and high-profile projects. She had a pivotal role in the design and financing of the Vermont project, a mixed-use, transit-oriented affordable housing community in South Los Angeles located on a site left vacant and blighted since the 1992 civil uprising.

Laing's most significant achievement to date is arguably the launch of Laing Companies in 2022, which made her one of the few black women to own an affordable housing development and consulting firm in the country. Her dedication and care to affordable housing development is expressed through a holistic approach emphasizing collaboration, community engagement and capacity building.

**HANNAH LEE**

Partner
Spencer Fane LLP

As a partner in a typically male-dominated practice area, Hannah Lee's proven track record in defending clients on product liability, warranty, premises liability, toxic tort and construction defect matters has helped her build a reputation as a leader both inside and outside of her current firm. From high-profile catastrophic injury cases to large-scale warranty matters, Lee brings focused experience within the automotive, consumer and chemical product industries to achieve favorable outcomes in complex and consequential litigation.

Lee defends major motor vehicle and highway product manufacturers in high-exposure cases often involving catastrophic injury and wrongful death. She is highly adept at managing warranty, and well-versed in Lemon Law, entrusted with overseeing more than 150 cases.

**DAN LYNCH**

Partner
Akin

Akin partner Dan Lynch is a highly regarded leader in the firm's projects & energy transition practice. He is regularly called upon to assist leading renewable energy clients in cutting-edge, sophisticated transactions, with a particular focus on power hedges. As part of his practice, Lynch plays leading roles in many significant matters for key renewable industry players. Recent examples include leading the representations for Excelsior Energy Capital in a multiyear agreement with Fluence Energy to develop 2.2 GWh of battery energy storage system infrastructure in markets across the United States.

Lynch regularly serves as a mentor to many junior LGBTQ+ lawyers and participates in the firm's recruiting efforts at the LGBTQ+ Bar's annual Lavender Law conference.

**AMBER MALTBIE**

Partner, Government Relations
& Regulation Group
Nossaman

Amber Maltbie is a leading campaign finance and election law attorney in California and throughout the country, advising a diverse range of clients on the complex intersection between high impact advocacy and federal, state and local regulations. Her clients include elected officials, exempt organizations, corporations, political action committees, ballot measures and individuals seeking to influence the political process.

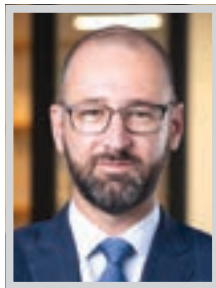
A leader in the field of campaign finance and election law, Maltbie serves on the American Bar Association's standing committee on Election Law, chairs the policy subcommittee and co-chairs the Campaign Finance Working Group. This year, she was appointed to the California Political Attorneys Association board of directors.

**SCOTT MALZAHN**

Managing Partner
Waymaker LLP

One of California's leading litigators, Scott Malzahn is managing partner of Waymaker LLP. He has a complex commercial litigation practice that spans intellectual property, fintech and class actions in the securities arena.

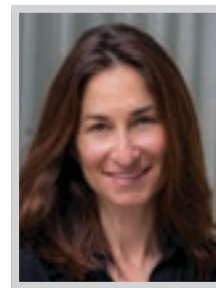
Malzahn has won cases at every level, from arbitrations to federal and state appellate courts. Earlier this year, he and the Waymaker team won a \$18.3 million award in a trade secret theft case. In addition to his trial experience, Malzahn has handled high-profile disputes through motion practice before the trial court and on appeal. He crafted the winning legal arguments adopted unanimously by the California Supreme Court in a decision that established a new legal test to govern anti-SLAPP cases under the catchall provision.

**MICHAEL MANCINI**

Founding Partner
Mancini Sherk LLP

Mancini Sherk founding partner Michael Mancini focuses on shareholder and derivative, cannabis, business and entertainment disputes. He has represented internationally recognized businesses, notable angel investors, startups, world-famous celebrities, small local businesses and private individuals.

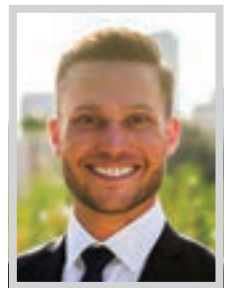
Mancini regularly spearheads complex cannabis litigation and frequently serves as advisory co-counsel to other premier firms. He has spoken on multiple expert panels regarding the ethics of representing licensed cannabis companies, emerging trends in cannabis litigation, and the need to thoroughly comprehend state and local licensing before rushing into court. Mancini has recovered tens of millions of dollars for cannabis clients and defeated millions of dollars in claims against them.

**DEBORAH MARCUS**

Executive
CAA Foundation

Deborah Marcus is an executive in the CAA Foundation, the philanthropic arm of CAA. Sitting at the intersection of entertainment and education, Marcus helps drive transformational change through private and public partnerships.

Marcus' accomplishments are reflected in the launch of Roybal Film and Television Magnet High School in Los Angeles. Stemming from client George Clooney's desire to diversify the sets of major film and tv productions, Marcus helped build out a strategy to ensure students from historically under-represented communities in entertainment graduate high school both college and career ready, turning to relationships and clients within the education space and Hollywood, including the Los Angeles Unified School District, the US Department of Education, unions, major studios, and media companies.

**MARK MASLIAH**

Wealth Management Advisor
Northwestern Mutual

Mark Masliah is a wealth management advisor with Northwestern Mutual, offering a diverse range of financial products and services to young professionals, high-net-worth families, businesses and institutions. With his extensive experience, professionalism, and access to a wide range of financial products and services, Masliah is dedicated to helping his clients meet their financial goals, estate planning and insurance needs.

Masliah's background spans several industries, including entertainment, tech and real estate. He holds real estate, life and health, series 6, 63, and 7 licenses, as well as CFP, ChFC, QFPC and CLTC designations. During his tenure with the company, Masliah has been a field Director in the Downtown LA office. He is also a founding member of NM's LGBT Field Advisory Board.

LOI: THRIVING IN THEIR 40s



ERIC MEYER

Partner

Meyer, Olson, Lowy & Meyers LLP

Eric Meyer’s most successful career accomplishments can be measured inside and outside of the courtroom. While working at a large firm, he has balanced being a valuable trial attorney on significant cases alongside senior partners with managing his own caseload and trying cases as lead counsel since early in his career.

Meyer is a unique family law attorney equally comfortable drafting prenuptial agreements, trying domestic violence cases, and consulting on mediation cases where clients would otherwise not be able to afford an experienced attorney at a large firm. He has crafted creative financial settlements and premarital agreements that have protected his clients’ unique interests, and he is most proud of the cases that have kept his clients out of trial.



WILLIAM MEYERS

Partner

Hill, Farrer & Burrill LLP

William Meyers is a trial lawyer with a proven track record of securing favorable verdicts, judgments and dispute resolutions for clients facing claims of professional malpractice, breach of contract and high-stakes business fraud. A trusted litigator and advocate both inside and outside the courtroom, Meyers has become counsel of choice for law firms defending against allegations of legal malpractice and breach of fiduciary duty.

Meyers represents a range of business clients, including individual shareholders, officers and directors, privately held medium and large-sized companies, and some of the nation’s most well-respected law firms. His clients are active in a range of industries and fields, from transportation and logistics to legal services to staffing and recruiting.



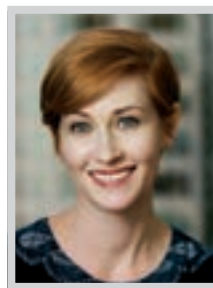
DAN MILLER

Partner

Miller Barondess, LLP

One of the founding partners of Miller Barondess, LLP, Dan Miller is an accomplished trial lawyer with a record of success in state and federal courts and in arbitrations in California and around the country. He is involved in all aspects of managing the firm, including business development, training, recruiting and strategic planning for the growth of the business.

Miller has extensive experience in the real estate sector, working with land developers, homebuilders, lenders, real estate private equity firms, and investment firms. He also has worked with banking and private equity clients and has represented some of the leading investment banks in the world, two of the largest publicly traded banks in California, a leading venture capital firm in Los Angeles, and several early-stage companies.



VIRGINIA MILSTEAD

Partner

Skadden, Arps, Slate, Meagher & Flom LLP

Virginia Milstead has a broad commercial litigation practice, with an emphasis on securities class actions and shareholder and M&A litigation, representing clients in both federal and state courts. Clients call on Milstead for her expertise about both the law and their businesses, her intensity of effort and the quality of her results.

She has also advised clients on matters involving duties of corporate directors, civil RICO, unfair business practices, and various other contract and tort claims. Currently, she is playing a leading role in representing Zillow Group, Inc. and certain of its directors and officers in securities litigation and several stockholder derivative actions asserting claims under the Securities Exchange Act of 1934 and Washington law.



DAVID MOORE

Partner

Yukevich | Cavanaugh

Moore has spent his entire career defending all types of clients – cities, major corporations, contractors, local businesses and individuals – against personal injury and wrongful death litigation. Over the years, he has solidified his reputation as a go-to attorney for defense of trucking and transportation accidents, and construction site and other workplace accidents, including product liability claims in these arenas. He is also experienced in handling property damage litigation, which includes wildfires, building fires, vehicle fires, floods, mudslides and landslides.

Moore has prevailed on summary judgment motions in serious injury cases, including a successful argument before the California Court of Appeal, whose opinion found that the evidence presented by Moore was “unequivocal” and affirmed the trial court’s judgment.



Congratulations to **Maggie Wilson** on her selection to the *Los Angeles Business Journal’s* 2024 “Thriving in Their 40s.”

It is an honor to work with you, and we could not be more proud of your accomplishments.



weinstocklaw.com

ESTATE PLANNING | WEALTH TRANSFER PLANNING | ESTATE & TRUST ADMINISTRATION | ESTATE & TRUST LITIGATION
BUSINESS SUCCESSION PLANNING | CHARITABLE PLANNING

LOI: THRIVING IN THEIR 40s

**INES NASRI**

Founder and CEO
WebPower USA LLC

Ines Nasri specializes in guiding international companies through the complexities of expanding into the US market using digital marketing, including branding, positioning, customer acquisition and lead generation. With over 16 years of experience, she has been instrumental in the success of hundreds of companies, particularly in the US, Asia and EMEA regions.

Nasri is a sought-after guest columnist, certified business mentor and workshop presenter, recognized for her dedication to mentorship and community involvement with SCORE Organization and Select USA's Department of Commerce Program that promotes Foreign Direct Investments in the USA, among many others. She is also a business advisor with Pacific Community Ventures, a mentor with the Department of Commerce, and a member of the board of advisors of the Laurel Foundation.

**ANTHONY NGUYEN**

Shareholder
Shegerian & Associates

Shareholder at Shegerian & Associates, Anthony Nguyen's career is marked by a series of accomplishments that firmly establish him as one of the top plaintiff trial attorneys. In 2021, Nguyen and his team secured a record-breaking \$155.4 million verdict in a whistleblower case against Farmers Insurance. This landmark case not only showcased Nguyen's legal expertise but also had a significant impact on whistleblower protections. In 2023 alone, he achieved three seven-figure verdicts as lead counsel, and in 2024, he secured a \$33.5 million judgment in *Rudnicki v. Farmers*.

His leadership has helped the firm recover hundreds of millions for clients over the past few years, representing individuals who have been wronged by their employers by combining legal expertise with compassion.

**ERIN NICHOLS-WALKER**

Creative Director; Senior Associate
Wimberly Interiors

Erin Nichols-Walker has dedicated two decades to the hospitality design industry, establishing herself as a leader and innovator. She approaches each project with a collaborative spirit and deep commitment to mentoring and fostering talent within design teams. Notably, she led the design efforts for the comprehensive renovation of the Park Hyatt Aviara, transforming it into one of the most significant properties in the brand's portfolio.

Nichols-Walker's portfolio spans high-profile projects, including work with Four Seasons, involvement in groundbreaking new developments in Dubai, Hard Rock Tejon in California, and Hotel Clemente. Her expertise has also extended into branded residences and multigenerational resort properties, making her a versatile designer adept at addressing the evolving needs of luxury hospitality.

**LOUISE NUTT**

Senior Counsel
Sklar Kirsh LLP

Senior counsel in Sklar Kirsh's litigation department, Louise Nutt's experience includes representing companies and individuals in various stages of civil litigation in state and federal court, including trial and appellate work. Prior to joining the firm, Nutt worked at Glaser Weil Fink Howard Avchen & Shapiro LLP where she represented companies and individuals in entertainment, finance, banking and real estate.

Previously, she was an associate at Bryan Cave LLP, where she defended banks, franchisors, and other businesses in litigation, and advised on social media policies, consumer protection issues affecting mobile apps, and emerging payment issues. She currently serves on the board of directors of St. Joseph Center, a non-profit that focuses on providing services to the homeless community in Los Angeles.

**MEGAN O'NEILL**

Founding Partner; Chair of Litigation
DTO Law

Megan O'Neill, co-founder and chair of litigation at DTO Law has made remarkable achievements in the field of litigation on behalf of her clients while demonstrating leadership in building a diverse and inclusive law firm. A fierce litigator and master strategist, O'Neill leads high-stakes class action and complex commercial cases for clients such as HP, Nutrafol, Onnit, Liquid IV, John Paul Mitchell Systems and Walgreens.

O'Neill tackles a wide range of cases, from thorny breach of contract and fraud claims to trademark infringement disputes. Nonetheless, she is most recognized for her work in the class action space, which has led her to chair several class action defense conferences and secure a position on the steering committee of the invitation-only Consumer Goods Litigation Forum, Defense Bar.

**MARIA PEARMAN**

Partner
GHJ

Maria Pearman, CPA, CGMA, was named GHJ's Food and Beverage practice leader in 2024, cementing her role as a vital leader within the firm. With over 15 years of expertise in accounting and advisory services for the food and beverage industry, her strategic approach and entrepreneurial spirit have made a substantial impact on the beverage sector.

In her leadership role this year, Pearman has focused on expanding GHJ's Food and Beverage Practice, ensuring that clients benefit from her in-depth industry knowledge and commitment to innovation. Her unique expertise spans internal accounting processes, cash flow forecasting, financial strategy and succession planning, allowing her to provide invaluable insights to beverage and food businesses. She helps her clients optimize their financial operations, positioning them for long-term success.

**CHRISTOPHER PELHAM**

Head of Litigation and Disputes,
Los Angeles
Norton Rose Fulbright US LLP

An experienced trial lawyer at one of the world's oldest and most-respected law firms, Christopher Pelham is called upon by his clients to help resolve sensitive and complex issues through commercial dispute advocacy, internal investigations, compliance counselling and representations before government agencies and regulators.

From his time as Assistant US Attorney in Los Angeles where he investigated and prosecuted cases involving racketeering, organized crime and fraud to his international work as one of only a handful of former US prosecutors working directly from mainland China, he still loves his profession as much as he did from his childhood living room, watching *Law & Order* at 13 years old. He sits on the board of the Langston Bar Association of Los Angeles.

**NOAH PERCH-AHERN**

Partner
Greenberg Glusker LLP

Noah Perch-Ahern is a distinguished environmental and energy attorney with broad-based experience representing and counseling clients in many practice areas. He maintains a national environmental and energy practice involving complex litigation, regulatory counsel and transactional matters. Throughout the last nearly two decades, he has closely managed a wide range of high-stakes matters for his clients, from high-value probate and nonprofit foundation issues to major corporate acquisitions.

Perch-Ahern has significant litigation experience and has tried jury and bench trials. He also regularly helps clients devise solutions to difficult regulatory problems, represents clients in connection with administrative proceedings and enforcement matters, assists clients with deals and development projects.

**KELLY PERIGOE**

Partner
King & Spalding

Kelly Perigoe has built a standout practice guiding clients through appeals and critical motions in state and federal appellate courts and advising trial teams on key issues and in pre-trial and post-trial motion practice. Her practice covers a wide variety of substantive areas, including complex commercial litigation, intellectual property law and class actions. A former Ninth Circuit Court of Appeals judicial clerk, Perigoe has over a decade of experience in federal and state courts, throughout the United States and internationally, and from the pre-litigation to appellate phases.

Perigoe is regularly tapped to draft dispositive motions involving thorny issues and to lead appellate strategy in her clients' most critical and impactful matters. She also counsels clients on novel and complex legal issues affecting their businesses.

**ALISON PLESSMAN**

Partner
Hueston Hennigan LLP

Alison Plessman regularly leads many of Hueston Hennigan's most significant matters and has cemented a reputation as one of the state's top litigators. Her wide-ranging practice includes matters involving wildland fire and debris flow, defamation, discrimination, copyright infringement, contract, employment, securities fraud, and trade secrets. She also advises clients on their most sensitive and confidential internal matters, including whistleblowing, discrimination, breach of fiduciary duty, trade secrets misappropriation, termination and unfair competition.

Plessman's work includes representing PacifiCorp and Pacific Power in numerous high-stakes lawsuits stemming from the 2020 Labor Day Fires that burned over 500,000 acres across eight counties in Oregon and California. Plessman has scored multiple pre-trial and trial wins.

LOI: THRIVING IN THEIR 40s



DAVID PRAGER
Partner
Nixon Peabody LLP

David Prager is a skilled litigator representing large and mid-sized employers in unfair competition, non-compete, trade secret, discrimination, and harassment cases. He also advises clients on hiring, discipline, termination, accommodations, leave policies, and wage-and-hour compliance. He also has a strong track record in resolving complex commercial litigation matters.

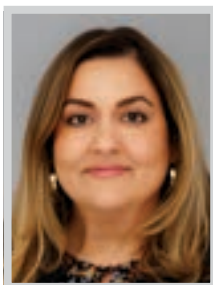
Prager secured summary judgment in federal court for a manufacturing and industrial client in a whistleblower retaliation case brought by a former officer and director. He also defeated two requests for a temporary restraining order and a motion for a preliminary injunction in a trade secret/non-compete dispute for a consulting company and its principals.



ZEV RABEN
Partner
Ramo Law PC

Zev Raben, a distinguished partner at Ramo Law LLC, specializes in financing and distribution law. Raben has consistently guided top entertainment financiers, producers and distribution companies through complex legal landscapes, ensuring they achieve financial security and maximize their impact within the film industry.

At the helm of Ramo Law's financing team, Raben's work is most notable for representing major financier clients, successfully closing high-profile deals worth tens of millions of dollars. Among his recent successes are lender-side financings totaling over \$75 million within just nine months. Raben recently made significant contributions to BondIt Media Capital's deal with Cineverse for Terrifier 3.



BEE RAREWALA
Chief Strategy Officer
AC Martin

Bee Rarewala, chief strategy officer of architecture firm AC Martin, has centered her 20-plus year career at the nexus of design thinking and business strategy, with a passion for developing the next generation. As CSO, Rarewala drives business growth through vision-led, strategic planning and acts as a change agent for firmwide transformation. She facilitates key initiatives and investments, drives continuous improvement, and oversees business development strategy, marketing and communications.

Prior to AC Martin, Rarewala was the principal and director of Corporate Brand Strategy for global architecture firm CRTKL, where she helped to steward the integration of the firm with IBI Group and parent company Arcadis. She also sits on the executive committee of the USC Architecture Guild.



WILL REED
Shareholder
Shegerian & Associates

Will Reed is a top litigator at Shegerian & Associates. Over the past year alone, he has secured two separate \$14 million employment verdicts, a \$5 million settlement, a \$9 million judgment, and the affirmation of a \$33.5 million judgment by the Court of Appeal. In addition, he has achieved numerous confidential settlements, many in the seven-figure range.

Reed represents individuals who have been wronged by their employers, combining legal expertise with genuine empathy and compassion. Beyond his impressive victories, Reed is also known for mentoring aspiring attorneys, sharing his insights on trial strategy, and advocating for systemic change in workplace practices. He is also known for mentoring aspiring attorneys sharing his insights.



ODEST RILEY JR.
Co-Founder
SoCal Premier Property Management

With nearly 20 years of real estate experience and over \$400 million in closed transactions, Odest Riley Jr. is a sought-after professional best known for his specialty in finance and property asset management. As CEO of WLM Financial and co-founder of SoCal Premier Property Management, Riley services span across residential, commercial, and mixed-use real estate, encompassing property acquisitions, financing and leasing.

Riley's journey into real estate began in the finance sector, where he handled loans on commercial real estate deals. His proficiency in understanding complex financial structures gave him a unique advantage, and quickly realized he could close deals more efficiently himself. Since 2016, he has worked extensively with professional athletes.



Congratulations!

**JEANINE
ZALDUENDO**

LEADERS OF INFLUENCE:
Thriving in their 40s

Los Angeles Business Journal

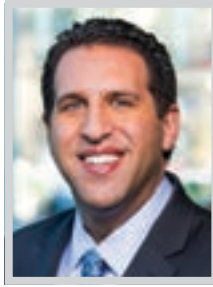
LOI: THRIVING IN THEIR 40s

**JULIA ROMANO**

Partner
King & Spalding

Julia Romano is a partner in King & Spalding's Trial and Global Disputes practice. She defends Fortune 100 and other large companies in a wide range of complex litigation matters, including medical device, pharmaceutical, automotive, toxic tort and other product liability and tort cases. She has almost two dozen high-profile jury trials under her belt.

Romano continues to serve as both trial counsel and California Coordinating Counsel for Johnson & Johnson in the widely publicized litigation involving the company's iconic baby powder and is currently serving as co-lead trial counsel in the first bellwether Zantac trial in California. Recently, she won a high-profile bad faith insurance trial for a top insurance company and obtained a defense verdict for Union Carbide in a challenging products liability case.

**JONATHAN SANDLER**

Shareholder; Managing Partner,
Los Angeles Office
Brownstein Hyatt Farber Schreck

Jonathan Sandler, a shareholder with Brownstein Hyatt Farber Schreck, is a results-driven litigator and an aggressive advocate for his clients. Companies turn to Sandler for all business-related disputes. He has advised a diverse array of clients and litigated many matters from their inception through judgment, including a variety of business and commercial disputes, consumer protection matters, class actions, hospitality disputes, real estate disputes, and health care and employment litigation.

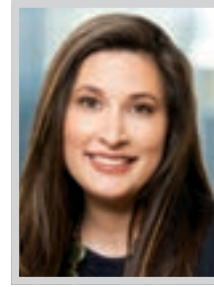
In the last year, Sandler secured dismissals for multiple cases at the pleadings stage, obtained summary judgment, won judgments and successfully resolved cases around the country. In addition to serving on various committees at the firm, he has grown his personal practice and served as the managing partner of the Los Angeles office.

**MISTY SANFORD**

Partner; Chair, Real Estate – West Coast
Willkie Farr & Gallagher LLP

Misty Sanford is the chair of West Coast Real Estate in Willkie Farr & Gallagher's Los Angeles office. Her sophisticated and broad-based real estate transactional practice involves all aspects of real estate, with an emphasis on loan workouts, public/private partnerships, real estate financing, complex mixed-use developments, purchase and sale, joint ventures, environmental issues, land use, leasing and reciprocal easement agreements, which allows her to assist with the full lifecycle of real estate assets.

Whether leading transformational real estate transactions or creating innovative diversity programs, Sanford is a mover and shaker in real estate law and the legal community. Her work includes representation of some of the world's leading institutional investors, private equity firms and developers.

**LEILA SAYEGH**

Partner
Skadden, Arps, Slate, Meagher & Flom LLP

As head of Skadden Los Angeles' Banking Group, Leila Sayegh leads innovative financing transactions that often are critical to a company's survival, enabling game-changing acquisitions and recapitalizations and facilitating her client's available credit for a variety of growth initiatives. She has advised clients in multiple industries on financings for multiple billion-dollar deals, multi-currency cross-border senior secured credit facilities, and complex restructuring financings.

Sayegh represented NGL Energy Partners LP in connection with \$2.9 billion of refinancing transactions, consisting of \$2.2 billion in senior secured notes, \$700 million senior secured term loan facility and an amendment and restatement of its \$600 million ABL credit facility.

**ANTHONY SBARDELLATI**

Partner, Litigation
Akerman LLP

As a litigation partner at Akerman LLP, Anthony Sbardellati specializes in defending class actions, FLSA collective actions, and Private Attorneys General Act lawsuits. His expertise, particularly in the staffing industry, has positioned him as a key strategist, not only in litigation but also in advising clients on best practices to avoid future claims through tighter compliance with the Labor Code.

Sbardellati has represented a wide range of clients, from privately held family companies to Fortune 100 companies, handling complex wage and hour disputes. His experience includes defending claims related to unpaid wages, overtime, meal periods, rest breaks, wage statements and other Labor Code violations. Additionally, he has extensive experience with lawsuits alleging discrimination, harassment and wrongful termination.

**JOSHUA SCHNEIDERMAN**

Partner
Snell & Wilmer

Josh Schneiderman is the managing partner of the Snell & Wilmer's Los Angeles office and a member of the firm's corporate and securities group. He advises clients on a wide range of transactional matters, including mergers and acquisitions, joint ventures and public and private offerings of debt and equity securities. He also advises public and private companies on corporate governance matters and advises his clients on matters related to franchising.

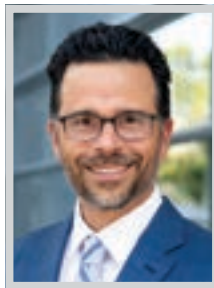
An adviser to clients in the cannabis industry, Schneiderman is familiar with unique industry demands considering the current conflict between federal and state laws and local regulations in the space. He helps clients navigate challenges that relate to licensing and registration, general corporate matters, branding, tax, banking and finance, real estate and employment.

**JOHN SHENK**

Founding Partner
Mancini Shenk LLP

Founding partner of Mancini Shenk LLP John Shenk is a litigator focused on shareholder and derivative, cannabis, and business disputes. With extensive experience in partnership disputes and the personal nature of fights within businesses, Shenk has come to refer to his specialty as "business divorce." He helps his clients understand their rights and assert them effectively, whether they be partners, shareholders in a corporation, members of an LLC, or joint venturers of any manner.

Shenk has handled some of the most prominent shareholder and investor litigation in the legal cannabis industry. He also has extensive experience with partnership and shareholder disputes, breach of fiduciary duty and fraud claims, unfair competition, trade secret misappropriation, and real estate litigation.

**AMNON SIEGEL**

Partner
Miller Barondess, LLP

Amnon Siegel is a partner with Miller Barondess, LLP, and has been instrumental in the firm's growth as a litigation powerhouse. An experienced trial lawyer and litigation strategist, Siegel handles complex disputes for both plaintiffs and defendants in a wide range of sectors, including banking and asset management, technology, real estate, consumer products, transportation, governmental regulation and insurance. He has recovered more than \$500 million for plaintiffs and has helped his defense clients avoid substantial exposure and potential liability.

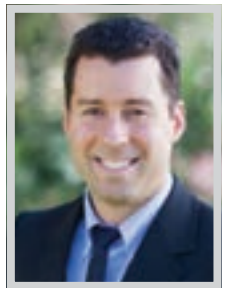
Siegel's past trial victories include a \$256 million jury verdict against defendant Nissan Motor Acceptance Corp, a \$16 million jury verdict against Toyota, and a unanimous jury defense verdict for East West Bank in a multimillion-dollar lender liability action.

**ANNE SLUSSER**

Partner
Meyer, Olson, Lowy & Meyers LLP

Anne Slusser was named a partner at the high-profile family law firm, Meyer, Olson, Lowy & Meyers in 2012. With extensive experience and expertise in all aspects of family law, today she specializes in high conflict custody disputes, cases involving domestic violence, and divorces with complex financial issues. Her representative clients include members of the entertainment industry, professional athletes, business owners and other high-net-worth individuals.

Working with people who are going through perhaps the most difficult and painful experience of their lives, Slusser brings sensitivity and intuition to the job along with an ability to connect with clients on a personal level.

**R. TYSON SOHAGI**

Partner
The Sohagi Law Group, PLC

Partner at The Sohagi Law Group, Tyson Sohagi's practice focuses upon environmental law, land use and planning law, the Coastal Act, the California Environmental Quality Act (CEQA), the National Environmental Policy Act, the Public Trust Doctrine, and Election Law. He advises public clients on complex matters such as infrastructure projects, mass transit fees, general and specific plans, specific development proposals, and other land use issues.

Sohagi has been involved in litigation matters in the California Superior and Appellate Courts involving issues pertaining to CEQA compliance, Coastal Act compliance, zoning compliance, the Public Trust Doctrine, election law and ballot measures, hydrology and water quality, water supply, geology, traffic and circulation, historic and archaeological resources, and biological resources.

LOI: THRIVING IN THEIR 40s



CHRIS SPICER
Partner
Akin

Akin partner and media, entertainment & sports practice head Chris Spicer is among the preeminent entertainment finance lawyers in the country, regularly leading some of the industry's highest-visibility deals between independent movie production companies and major financial institutions for household-name film, television and streaming projects. He also advises entertainment companies and equity providers in various music and gaming projects.

Often finding creative solutions to complex issues, Spicer has been instrumental to financial institution clients given the rapidly changing landscape for content creation and consumption. Currently, he is advising a financial institution in a \$1.1 billion senior secured library credit facility to subsidiaries of a mini-major film studio.



PETER STRIS
Founding Partner
Stris & Maher LLP

Peter Stris is the founding partner of Stris & Maher LLP, an elite litigation boutique that represents clients in difficult, high-stakes business disputes. Based in Los Angeles, he leads the firm's nationwide trial and appellate practice. Over his 20-year career, he has successfully first-chaired a wide variety of bet-the-farm business cases to verdict or judgment. He has also handled dozens of high-profile business appeals, including 10 he personally argued before the US Supreme Court.

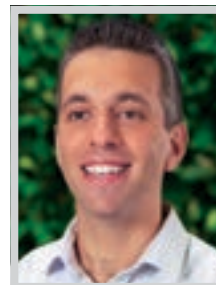
Over the past 12 months, Stris has continued to represent clients in many prominent cases. He is serving as lead trial counsel for Rhodium, an industrial-scale bitcoin miner, in truly bet-the-company litigation against Whinstone, a company that hosts industrial-scale bitcoin miners.



CYNTHIA SUN
Partner
LTL Attorneys

For the past 17 years, Cynthia Sun has been practicing law as a litigator in the areas of general liability, personal injury, product liability, breach of warranty, breach of contract, and consumer fraud. She has held partnership roles at two of the most prominent minority-owned law firms in Los Angeles, including her current firm, LTL Attorneys, in which she acts as lead counsel for consumer warranty matters.

Sun has experience with all aspects of litigation, including law and motion, discovery, taking and defending depositions, trial preparation, trial, post-judgment litigation, and appeals. Her knack for detail and ability to utilize California law allows her to aggressively defend automakers in motions to compel arbitrations, motions for judgment on the pleadings, motions for summary judgment and adjudication, and opposing fee motions.



DAVID SUTTON
Partner
GHJ

David Sutton, GHJ's transaction advisory services and private equity practice leader, brings more than 20 years of experience in finance, restructuring and mergers and acquisitions to his role. Sutton leads transaction-related projects, including quality of earnings, working capital analysis, forecasting and deal structuring. He spearheads growth initiatives and ensures high-quality insights that shape strategic decisions.

Sutton has advised on transactions ranging from \$10 million to \$2.5 billion, leveraging his expertise to support clients across various sectors, including consumer products, technology, food and beverage, manufacturing, and entertainment. Known for his thought leadership, he delivers actionable guidance for companies facing today's most pressing economic uncertainties.



ANNA TANG
Co-Chair, Corporate Group
Nossaman

Anna Tang serves as the co-chair of Nossaman's Corporate Group. She represents and advises emerging and established companies through a broad range of industries as transactional and general corporate counsel with respect to a wide variety of business transactions, including mergers and acquisitions, commercial agreements and negotiations and corporate governance.

Tang works closely with clients at all stage of the business lifecycle, from setting up and buying a business through restructuring, disposing of businesses and assets and winding down a business. Her representation includes entity formation, negotiating, drafting and reviewing all forms of commercial agreements, purchase agreements, joint venture, and other forms of equity agreements.



Spencer Fane celebrates Partner **Hannah Lee** for being named an *LA Business Journal* Leaders of Influence: Thriving in Their 40s honoree and congratulates all honorees!



SpencerFane

Spencer Fane LLP | spencerfane.com
201 Santa Monica Boulevard, Suite 550
Santa Monica, CA 90401

© 2024 Spencer Fane LLP. The choice of a lawyer is an important decision and should not be based solely on advertisements.



Congratulations Bradford Hughes and all Leaders of Influence: Thriving in Their 40s honorees

Smart results, delivered simply.



Clark Hill is an international team of legal advisors focused on delivering exceptional growth for your business.

Learn more at clarkhill.com.

This material may be deemed "Attorney Advertising."

LOI: THRIVING IN THEIR 40s



CLAY THOMAS
Shareholder
Vedder Price

Throughout his 15-year career with Vedder Price, Clay Thomas has become a pivotal member of the firm's Global Transportation Finance team. Thomas counsels a variety of clients including international banks and other financial institutions, major airline carriers, equipment manufacturers, borrowers, lenders, lessors, lessees and other debt and equity investors engaged in debt, equity and lease financings and various secured and unsecured lending transactions including capital markets and private placement transactions.

A certified public accountant, prior to joining Vedder Price, Thomas served as a tax accountant in a public accounting firm concentrating on corporate, partnership and international taxation matters. He is also a member of the firm's Associate Evaluation and Associate Hiring committees.



VIVIAN L. THOREEN
Partner
Holland & Knight

Vivian Thoreen has built a thriving career representing clients facing significant life challenges, often due to disease, divorce or death. Her law practice focuses on complex trust, estate, conservatorship and guardianship matters. She represents individuals, families, charities and financial institutions in cases including will and trust disputes, contested conservatorships and guardianships, and matters involving issues such as breach of fiduciary duty and elder abuse.

As executive partner of Holland & Knight's Los Angeles office, Thoreen has been instrumental in the firm's Southern California expansion from one office to three. Her leadership of the firm's national Private Wealth Services Dispute Resolution Team has elevated its status as a "go-to" firm for complex, high-profile family wealth disputes.



ADAM TISCHER
Senior Vice President
Colliers

Adam Tischer specializes in investment properties with value-add and redevelopment components. He represents private, corporate investment and developer clients in the Greater Los Angeles region. With proven expertise and success spanning all asset types, including office, retail, hospitality, multifamily, and land, Tischer has completed well over \$500 million in transaction value throughout his 18-year career, 14 of which he has spent at Colliers.

In December 2023, Tischer partnered with Carolwood LP on their acquisition of the iconic Aon Center. The group purchased the 1.1 million-square-foot office tower for \$147.8 million. At the time of completion, the transaction marked the largest post-pandemic office sale in Downtown Los Angeles and the only tower to trade over one million square feet since 2020.



KENNETH TRUJILLO-JAMISON
Partner
Willenken LLP

Kenneth Trujillo-Jamison, a partner at Willenken, is a highly accomplished litigator who leverages his sharply honed analytical and strategic skills to efficiently handle his clients' most complex and challenging matters. His practice spans a wide range of high-stakes, complex commercial and business litigation matters, including intellectual property disputes, class action defense, and entertainment litigation.

Trujillo-Jamison's standout accomplishments include his pivotal role in representing AbbVie in a high-profile pharmaceutical case against Takeda, one of the largest drug manufacturers globally. He also serves as national lead counsel for a prominent social media company in litigation across the country brought by users of the platform.



ERIC TUNG
Partner
Jones Day

Eric Tung is a partner in the Issues & Appeals practice group at Jones Day. Before joining Jones Day, he served as a law clerk to two US Supreme Court Justices. He also served as an assistant United States attorney in the Central District of California where he prosecuted federal crimes, as counsel in the Office of Legal Policy spearheading judicial confirmation efforts, and as a Bristow Fellow in the Office of Solicitor General in the US Department of Justice.

Tung is recognized for his versatile skills, both at the trial and appellate levels, and is often called upon to tackle difficult and complex legal questions facing the firm's clients. His practice includes healthcare, trade secrets, labor and employment, energy, products liability, construction, insurance, entertainment and financial technology.

**I am Honored to be Named Among
LA Business Journal's Leaders of Influence:
Thriving in Their 40s!**

For over 10 years, I have been protecting the rights of children with special needs in California Public Schools ensuring they receive the education and services they are entitled to by law.



JENNIFER CHANG
Special Education Attorney

915 Wilshire Blvd Ste 1775, Los Angeles, CA 90017
jennifer@jenchanglaw.com | (323) 931-5270 | EducationRightsAttorney.com
Offices in Los Angeles, Buena Park, and San Jose.

NOMINATE TODAY!



The Los Angeles Business Journal is proud to announce the 30th annual **Commercial Real Estate Awards**.

We are currently accepting nominations for the biggest, best and most notable commercial real estate deals and projects of 2024. We'll be honoring the developer, architect, and general contractor of each award-winning project. In addition, we'll recognize the most successful broker/broker teams in the market.

Winners will be announced at the Commercial Real Estate Awards and published within the Business Journal.

**NOMINATION DEADLINE
FRIDAY, JAN. 3**

To nominate, please visit
labusinessjournal.com/events/cre2025

LOI: THRIVING IN THEIR 40s



ROWAN VANSLEVE

President
Hope the Mission

Under president Rowan Vansleve's leadership, Hope the Mission has expanded to become one of the largest rescue missions in the United States, providing over 2,700 beds and serving 2.5 million meals annually.

Vansleve co-led a high-profile, 3,600-mile bike ride from Santa Monica to Washington, D.C., which raised substantial funds and garnered national attention. The campaign attracted thousands of new donors and caught the attention of Congress, resulting in \$850,000 in earmark funding for permanent housing solutions for seniors. He also spearheaded the introduction of Tiny Home Villages in Los Angeles in partnership with the local City Council members, a unique project that now provides nearly 1,000 beds.



GERRICK WARRINGTON

Attorney
Frاندzel Robins Bloom & Csato, L.C.

Gerrick Warrington is a Partner at the Frاندzel Robins Bloom & Csato, a bankruptcy lawyer and commercial litigator who specializes in representing banks, private lenders, loan servicers and other financial institutions and businesses in Chapter 11 and Chapter 7 bankruptcy cases, including appeals. He also represents businesses, commercial landlords and tenants, and others in business and insolvency-related litigation in state and federal court.

Warrington was recently named to the LA Bankruptcy Forum's executive committee as Secretary. He is a sought-after speaker on bankruptcy law at professional organizations and conferences such as the Bankruptcy Forum Insolvency Law Conference and Beverly Hills Bar Association.

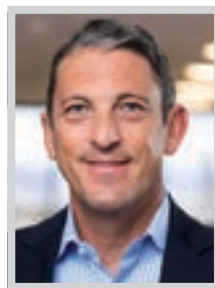


THOMAS WASKOM

Partner
Hunton Andrews Kurth LLP

As co-head of Hunton Andrews Kurth's product liability and mass tort litigation practice group, Tom Waskom provides skilled guidance to leading retail and consumer product companies across the United States. He has significant experience in trial and appellate courts across the country, and develops ongoing partnerships with his clients, proactively counseling on risk mitigation and potential regulatory pitfalls that may lead to future litigation.

Waskom is admitted to practice in the US Supreme Court, numerous federal courts across the country, and all state courts of California, New York, Pennsylvania and Virginia. His notable matters involve a range of industries, and include representation of Fortune 100 companies, startups at the forefront of innovation, and a robust pro bono practice.



MIKE WAXBERG

Private Wealth Advisor
Fortify Capital | Wealth Management & Insurance Services

Mike Waxberg is the founder and private wealth advisor of Fortify Capital, member firm of the Northwestern Mutual Private Client Group. He is a certified financial planner and is deeply rooted in the legal, entertainment and business communities advising on comprehensive retirement, investment, and estate planning strategies. He has in-depth knowledge of tax-efficient and business planning, working with both individuals and businesses helping to navigate the ever-changing financial landscape.

Waxberg and his team work closely with clients to make a comprehensive assessment of their goals, objectives, and planning needs, then use this information to create and track a financial plan.



PAUL WEEKS

Managing Director
J.P. Morgan

Paul Weeks is a managing director at JPMorgan Chase, leading the \$100mm+ corporate banking team. Weeks has over 20 years of experience in international banking having worked across London, New York and Los Angeles, and has extremely broad experience in advising companies that are public, private or backed by financial sponsors.

Weeks now responsible for JPMC's team that focuses on corporate clients headquartered in Los Angeles with revenues of \$100mm and above. He previously led HSBC's regional corporate banking team. While at HSBC, he helped the team more than triple its client revenues and add over 50 new corporate clients. He also took ownership of the region's Media/Entertainment and Healthcare strategies.

LEADERS WHO THRIVE

Congratulations

DAVID ALVARADO

on his selection to the Los Angeles Business Journal's "Leaders of Influence: Thriving in Their 40s" for 2024



HARVEST
REAL ESTATE LAW

www.harvestllp.com



PREMIER PROBATE ATTORNEYS IN LOS ANGELES

Keystone Law Group stands by you during life's most challenging moments. As the largest probate law firm in California, we help you navigate trust, estate, and conservatorship litigation and administration issues.

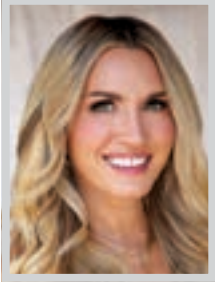


KEYSTONE
LAW GROUP, P.C.
PROBATE ATTORNEYS

keystone-law.com • 310.444.9060



LOI: THRIVING IN THEIR 40s

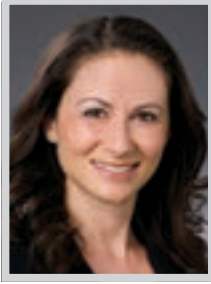


SHELTON WILDER
CEO

The Shelton Wilder Group at Christie's International Real Estate Southern California

Shelton Wilder is CEO of The Shelton Wilder Group, a top-tier luxury real estate team. With years of experience serving a clientele ranging from celebrities to first-time home buyers, her discretion and commitment to her clients are unparalleled. Wilder's nuanced understanding of the complex patchwork of neighborhoods, schools and cultures that make LA unique and her eye for style create a singular real estate experience.

In just seven years as a realtor, Wilder found her place among the top 1.5% of realtors nationwide, with over \$420 million in total sales and upwards of \$150 million in sales in 2022 alone. She and her team specialize in luxury residential and commercial properties on the Westside.

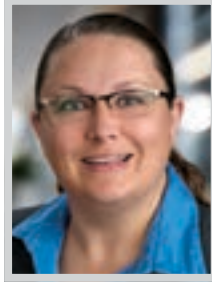


MAGGIE MOURADIAN WILSON

Shareholder; Director Weinstock Manion

Maggie Mouradian Wilson is a shareholder and director at Weinstock Manion. In her more than 15 years of practicing law, she has solidified her reputation in several practice areas including estate planning, wealth transfer planning, estate and trust administration, business succession planning, charitable planning, and family foundations. She focuses on comprehensive estate, gift, generation-skipping transfer, income and property tax planning for real estate investors, business owners and other high net worth individuals and families.

Wilson designs tax efficient strategies to meet her clients' wealth transfer and charitable goals while addressing family governance and business management concerns.



MANDY WOODS

Chief Operating Officer Objective, Investment Banking & Valuation

With over 25 years of experience across various industries, Mandy Woods is chief operating officer at Objective, Investment Banking & Valuation. Under her leadership, clear business development and career paths have been established, furthering the firm's core values of client-first commitment and collaborative success.

Woods oversees operations, financial management, human resources, IT and marketing, while steering the firm's strategic objectives. Her tenure has seen significant growth, with 2024 marking a record-setting year for both investment banking and valuation services groups. Woods' career trajectory includes leadership roles in life sciences, healthcare, and legal sectors.



JEANINE ZALDUENDO

Partner Zweiback, Fiset & Zalduendo LLP

Jeanine Zalduendo is a highly successful and razor-sharp attorney with vast experience litigating cases at all stages throughout state and federal courts across the country. She was of counsel at Quinn Emanuel Urquhart & Sullivan until early 2022, when she became a partner at Zweiback, Fiset & Zalduendo, a boutique firm specializing in white collar criminal defense, cybersecurity and complex litigation.

Zalduendo has held key roles in highly publicized litigations, bringing her unique perspective to bear on major recent victories. Recently, she personally briefed and orally argued for a victory at the California Court of Appeal, siding with her client in a published opinion affirming the disqualification of opposing counsel for the intentional use of ill-gotten attorney-client privileged information.

CONGRATULATIONS TO
THE LOS ANGELES
BUSINESS JOURNAL'S
**2024
LEADERS
OF INFLUENCE:
THRIVING IN
THEIR 40S**

REGISTER TODAY!

LOS ANGELES BUSINESS JOURNAL



PRESENTED BY



The Economic Health of Los Angeles

Join us for an Economic Insights Breakfast with Fifth Third Bank and Empowering American Cities as expert economists share exclusive data on L.A.'s labor supply, consumer demand, productivity, and growth opportunities. After the keynote, engage in a dynamic discussion with regional experts on key economic trends. Don't miss this opportunity to connect and gain valuable insights.

WEDNESDAY, FEBRUARY 12

The Biltmore Los Angeles | 8:30AM - 11:30AM PST

To register, visit labusinessjournal.com/events/economicinsights