



★ ★ ★ ★ ★ ★ ★ ★

LA's LEGAL CLASS OF 2025

PLATINUM SPONSOR

6200 WILSHIRE

GOLD SPONSORS

**Baker
McKenzie.**

**Barnes &
Thornburg**

CLUNE
CONSTRUCTION

GT GreenbergTraurig

HUESTON HENNIGAN LLP

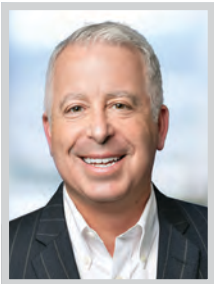
 **IRVINE COMPANY**

Lagerlof
LLP

**Miller
Barondess**
LLP

ROBINS / KAPLAN LLP

WSHB
WOOD • SMITH • HENNING • BERMAN



ANDREW APFELBERG
Partner
Greenberg Glusker

Renowned for his blend of corporate and finance experience, Andrew Apfelberg represents a “who’s who” of middle-market companies throughout the country. He has a considerable depth of experience in the branded consumer products and manufacturing & distribution industries as well as representing high-net-worth individuals and their family offices. He often acts as an outside general counsel to his clients, providing advice on a business’ significant transactions whether it’s a merger or acquisition, private equity or other financing, joint venture or licensing deal.

At Greenberg Glusker, Apfelberg previously served on the management committee and chaired the marketing department and has now led the firm’s recruitment efforts for the past five years. His strong business and finance background emanates from working in investment banking before attending law school at USC.



ROD BERMAN
Partner; Chair, Intellectual Property Group
Jeffer Mangels Butler & Mitchell LLP

Rod Berman has been on the cutting edge of intellectual property law for over 40 years. He has represented an array of clients in connection with patent, trade secret, trademark, internet and copyright issues, including the Smurf properties, Allergan, Shimano, U-Haul, Therabody, Paige and Cherokee. He represents several wine brands including the iconic Screaming Eagle, and has represented several well-known directors, a cinematographer, a symphony conductor, actors and an NBA team.

A multi-directional lawyer, Berman has handled numerous intellectual property litigations, including successful appeals before the Federal Circuit and 9th Circuit. He has also lobbied before the California Legislature regarding an amendment to the California unfair competition laws. Berman recently co-authored the article “Inconsistency and Confusion in the Judicial Treatment of Counterfeiting Claims,” published in The Trademark Reporter.



DEBBIE BIRNDORF-ZEILER
Partner
Norton Rose Fulbright US LLP

After over 20 successful years as founder and managing partner of Birndorf Law Offices, an employment counselling and litigation boutique representing California employers and executive, Debbie Birndorf-Zeiler transformed her career path to join Norton Rose Fulbright’s Los Angeles office, bringing her over 30 years of experience to help build a talented team at the firm.

Birndorf-Zeiler currently represents employers in all aspects of employment law, including defense of harassment and discrimination claims, wage claims, wage and hour class actions, Labor Code Private Attorneys General Act (PAGA) claims, disability claims and misappropriation of trade secrets. She also drafts and reviews employment contracts, severance agreements, employee handbooks and personnel policies and advises employers on day-to-day employee relations matters.



JEFF BJORK
Los Angeles Office Managing Partner; Former Global Vice Chair, Restructuring & Special Situations Practice
Latham & Watkins LLP

As managing partner of Latham & Watkins’ Los Angeles and Century City offices, Jeff Bjork coordinates the efforts of more than 250 lawyers and the professionals who support them while maintaining an industry-leading restructuring and bankruptcy practice, in which he represents public and private companies, creditors, and investors in all aspects of restructuring matters.

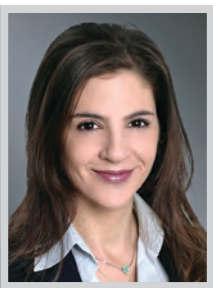
With more than 27 years in practice, Bjork advises companies on successful strategies to address mass tort and legacy liabilities, including asbestos, environmental and product related liabilities, and has represented clients in numerous mass tort bankruptcies. Among his notable practice work, Bjork served as co-lead counsel in the landmark Chapter 11 restructuring of Mallinckrodt – a multibillion-dollar biopharmaceutical company facing thousands of opioid-related lawsuits and \$5 billion in funded debt.



SUSAN BOOTH
Partner
Holland & Knight

Susan Booth is a partner in Holland & Knight’s Los Angeles office, where she has built a distinguished career as one of California’s top real estate attorneys. Focusing her practice on complex financial transactions across sectors like data centers, hotels, office buildings, shopping centers, multifamily developments and mixed-use projects, Booth represents a diverse range of clients, including commercial banks, pension funds, private equity funds, REITs, family offices and international clients.

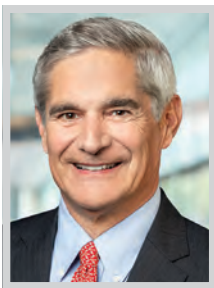
Booth has consistently closed billions of dollars in transactions each year, reinforcing her position as a leading figure in the real estate sector. This success can be attributed to her methodical, creative problem-solving approach, bolstered by a commitment to thoroughly understand her clients’ businesses and the unique challenges they face.



NINA BOYAJIAN
Shareholder; Co-Chair, Los Angeles Litigation Practice
Greenberg Traurig, LLP

Nina Boyajian stands out as an unwavering force in the legal arena, particularly in intellectual property law. As co-chair of Greenberg Traurig’s Los Angeles Litigation Practice, Boyajian exhibits a tenacious ability to tackle complex legal challenges

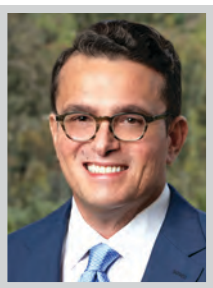
Boyajian’s litigation expertise is exemplified in her representation of Roadget Business Pte. Ltd., the owner of fashion brand SHEIN, against the operators of the Temu website. This high-stakes litigation involved serious allegations of trademark counterfeiting and copyright infringement. Boyajian secured a temporary restraining order against Temu, marking a significant victory in the digital age, where brand integrity is fiercely contested. She also represented Citizen Watch Company in a music copyright infringement case in which she prevailed on two motions, protecting her client’s interests while positioning for an extremely favorable settlement.



KEVIN BROGAN
Partner
Hill, Farrer & Burrill LLP

Trial lawyer Kevin Brogan is known for his success on eminent domain and inverse condemnation cases and other real property and business actions often involving valuation issues. Brogan’s clients range from multinational corporations to individual real property and business owners and include owners of major shopping and retail centers, distribution and industrial uses, hotels, office and apartment buildings as well as oil and gas properties and other unique uses.

Brogan has substantial trial experience in state and federal courts which he likens to playing chess — enjoying the strategy of plotting the moves ahead. He also authored and continues to update the California Chapter in the American Bar Association’s book, The Law of Eminent Domain.



MANUEL CACHÁN
Partner
Skadden, Arps, Slate, Meagher & Flom LLP

A distinguished litigation partner, Manuel Cachán’s expertise spans a wide array of legal challenges, having adeptly represented Fortune 500 companies in both federal and state courts. He handles intricate breach-of-contract disputes, complex banking litigations, high-stakes product liability lawsuits and critical professional malpractice cases. His comprehensive approach and commitment to his clients’ interests make him a standout attorney, capable of tackling even the most daunting legal obstacles with confidence and precision.

Cachán’s experience is marked by his adept handling of a spectrum of cases, from single claims for companies or individuals to navigating the intricacies of multidistrict, multiparty litigation. His prowess is particularly evident in managing consumer class actions involving thousands of putative claimants, where his meticulous preparation has consistently led to favorable outcomes.

OFFICE CONDOMINIUMS FOR SALE

Starting From
\$400,000*

as low as
0% DOWN

**VARIOUS SUITE SIZES INCLUDING
GROUND & FULL FLOORS**

6200wilshire.com

*Terms and conditions apply.
Contact our team for more information.

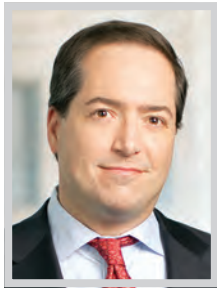


ELIZABETH CAMACHO

Partner
Loeb & Loeb

An accomplished land use lawyer and trusted advisor, Elizabeth Camacho plays an intricate role in urban development projects, helping clients navigate complex regulatory frameworks at the state and local levels. She has substantial experience on a wide range of project types and sizes, including multi-family housing, mixed-use, educational and religious institutions, hospital and medical uses, studios, and industrial uses, among others.

Camacho is frequently sought out by clients for her deep experience in successfully guiding matters involving the California Environmental Quality Act, the Subdivision Map Act, the California Coastal Act, and the Housing Accountability Act. Recently, she represented National Real Estate Development in pursuing entitlements for a 53-story residential and spearheaded a major project for Claremont McKenna College.



MARSHALL CAMP

Partner
Hueston Hennigan LLP

Marshall Camp is a skilled trial lawyer, former federal prosecutor, and co-founder of Hueston Hennigan and routinely leads the firm's highest stakes matters. His practice encompasses various complex commercial disputes, ranging from trade secret, contract, corporate control, securities and IP matters to commercial fraud, employment, professional liability, trust, bankruptcy and tax proceedings. He represents Fortune 500 companies, middle-market businesses, startups and prominent individuals in numerous industries.

A former assistant US attorney for the Southern District of New York, Camp has deep experience guiding clients through regulatory investigations and criminal enforcement actions. In his role as a federal prosecutor, he was lead or co-lead trial counsel in a range of criminal cases, including one of the largest criminal tax cases in US history.



SHIRLEY CHO

Partner
Pachulski Stang Ziehl & Jones

For over 25 years, Shirley Cho, partner at Pachulski Stang Ziehl & Jones LLP (PSZJ), has represented some of the largest companies in America to restructure billions of dollars of debt. She has also represented acquirers of assets in bankruptcy proceedings, and creditors pursuing significant claims in chapter 11.

Cho has been at the forefront of numerous high-profile restructurings as counsel for dozens of official committees of creditors across a variety of industries. Recently, she represented a multi-national biopharma company, Athenex, Inc., the Official Committee of Unsecured Creditors of Cineworld Group, and Daewoo Shipbuilding Marine Engineering in its \$1.2 billion claim in Seadrill. Cho is also a qualified US bankruptcy law expert in foreign insolvency proceedings and regularly speaks on insolvency topics around the world.

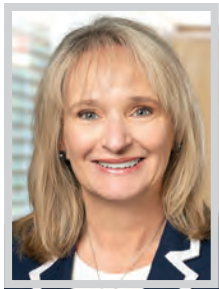


MORGAN CHU

Partner
Irell & Manella

Irell & Manella partner Morgan Chu has secured many of the world's largest — and in some cases precedent-setting — verdicts, judgments and settlements, resulting in actual payments totaling more than \$9 billion.

In April 2022, Chu co-led the team that scored a \$2.3 billion judgment for VLSI Technology in an infringement suit against Intel, which was the largest patent judgment in US history. In a separate trial, Chu obtained a \$948 million jury verdict for VLSI in a suit involving a microprocessor technology patent. Chu's legal expertise is not limited to intellectual property litigation. He, for example, argued Intel Corporation v. Fortress Investment Group before the Ninth Circuit, which resulted in a complete defense win.



ROBYN CROWTHER

Regional Managing Partner, California
Stephoe LLP

Robyn Crowther serves as the regional managing partner in California for Steptoe and has considerable first-chair trial and arbitration experience across a variety of litigation fields. She represents individuals, multinational corporations, municipalities, and small businesses. She has experience in provisional and preliminary remedies, pleading attacks, and motions for summary adjudication and summary judgment.

Crowther works frequently in employee mobility matters, particularly where they intersect with intellectual property, unfair competition, contractual and tort claims. These matters often involve high-pressure efforts to obtain preliminary injunctions or other provisional remedies, and Crowther is well-versed in the procedures and strategies relating to such matters. Her cases have involved civil trials and arbitration before various tribunals, including JAMS, AAA, FINRA and various state and federal courts.



MICHAEL De VRIES

Partner
Kirkland & Ellis LLP

Michael De Vries is a nationally recognized IP trial lawyer with substantial success representing plaintiffs in high-stakes intellectual property trials. In just the last year, he was lead trial counsel in three separate jury trial wins throughout the country and is now undefeated in nine consecutive jury trial wins as lead trial counsel over the last five years.

De Vries' unblemished jury trial win streak as lead trial counsel has led to secure more than \$2.5 billion for his clients in verdicts and publicly reported settlements since 2018. Additionally, De Vries has obtained numerous defense-side jury verdicts, including for Samsung in February 2024 in a multi-patent case seeking \$4 billion in damages — the largest defense-side patent jury verdict in US history.



PENELOPE DEIHL

Member
Clark Hill

Penelope Deihl is a superlative litigator and negotiator with over 30 years of experience representing individuals, corporations and other entities in a range of commercial and civil disputes.

A licensed real estate broker herself, Deihl has developed a noteworthy practice defending professional-services providers against allegations of professional liability and malpractice, with a particular focus on representing those in real estate-aligned trades, including mortgage brokers, accountants, financial managers, estate planners, insurance brokers, business planners, and other consultants and advisors such as architects and engineers. She regularly appears in federal and state courts, in settlement negotiations, and in arbitration and mediation, as well as before state and national licensing boards and certification entities, helping clients preserve the credentials necessary to pursue their line of work.



WILLIAM (BILL) DONOVAN

Partner
McDermott Will & Emery

As co-head of the McDermott Will & Emery's class action practice, Bill Donovan has demonstrated exceptional skill and dedication in trial and appellate litigation, particularly in the areas of accounting, consumer class actions, professional liability, and complex commercial cases.

Donovan's 34-year career is marked by his ability to handle high-stakes, bet-the-company litigations, having first-chaired multiple trials and arbitrations. His client roster includes Fortune 200 corporations, emerging companies, sharing economy clients, entrepreneurs and technology firms, all of whom have benefited from his legal representation. One of Donovan's notable recent accomplishments was serving as lead counsel and conducting a successful oral argument at the Ninth Circuit in the case of Bristol SL Holdings v. Cigna Health Life Ins. Co. (9th Cir. May 31, 2024).

ICONIC



BE WHERE PREMIER LAW FIRMS ARE MOVING

With panoramic sea-to-skyline views and engaging on-site amenities, discover why this landmark workplace is the choice of leaders in law and beyond.

2121
AVENUE OF THE STARS

FIND YOUR CENTURY CITY OFFICE AT 2121AOS.COM

 **IRVINE COMPANY**

All properties for lease by Irvine Management Company, a licensed real estate broker. Product and amenities are subject to availability. Images may not be to scale. Not all features available in all communities. Not a representation or warranty. ©2025 Irvine Management Company. All Rights Reserved. The Sunwave, Irvine Company, and Success Works Here are registered trademarks of Irvine Management Company. CA DRE LIC. #02041810



JOSHUA DRISKELL
Managing Partner
Lagerlof, LLP

Joshua Driskell is chair of the Private Client Services Department and managing partner of Lagerlof, LLP. His practice is dedicated to estate planning, wealth transfer planning, business succession planning, post-death administration and fiduciary litigation. Driskell’s clients consist predominantly of high-net-worth individuals, such as business owners, real property investors, family offices, private equity fund managers, and entertainment industry figures.

Driskell regularly counsels his clients on how to minimize their tax burdens and best transfer wealth to the next generation. Clients often consult with Driskell for charitable giving, and he has helped establish charitable trusts and many private foundations. He is a frequent lecturer and guest speaker on a variety of estate planning and tax related topics.



CHRISTOPHER DUSSEAULT
Partner
Gibson, Dunn & Crutcher LLP

A trial and appellate lawyer with 30 years of experience, Christopher Dusseault’s practice focuses on defending businesses in antitrust and other complex commercial litigation. He regularly serves as lead counsel to the nation’s leading companies in cases that attract national media attention and have exposure in the billions of dollars. He has repeatedly obtained outstanding results for his clients through dispositive motions, trial, appeals and favorable settlements.

Dusseault has spent his entire career in the Los Angeles office of Gibson Dunn and has been a leader of that office and in the community. He has supported and served on the Board of local non-profits and has been actively engaged in Los Angeles politics for 25 years.



STEVEN ELIE
Co-Managing Partner
Musick, Peeler & Garrett LLP

Steven J. Elie is a partner specializing in complex business, insurance and environmental litigation and counseling. Although based in Los Angeles, he routinely handles matters throughout the entire State. Elie has extensive experience defending and prosecuting a broad range of environmental, administrative and litigation matters. Elie has handled a wide variety of insurance, commercial litigation and white collar criminal matters as well as pre-litigation counseling for businesses, non-profit organizations and public entities.

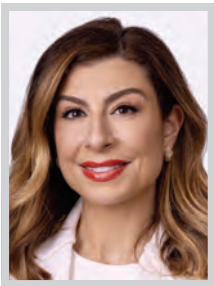
Elie has extensive experience in complex environmental, insurance and tort litigation and environmental counseling. His environmental and tort litigation experience includes dozens of actions relating to, among other things, groundwater contamination as well as actions brought under or involving CERCLA, RCRA, CEQA, NEPA, the Clean Water Act and myriad local ordinances.



WILLIAM “BILL” ELLIS
Partner, Real Estate
Akerman LLP

William “Bill” Ellis, a real estate partner at Akerman LLP, provides a comprehensive real estate perspective to clients across the United States. He represents private equity funds, global financial institutions, investment banks, REITs and private developers in various transactions such as workouts/restructurings, leasing, acquisitions, dispositions, financing, and joint ventures.

Stemming from his experience as a former general counsel for a leading publicly traded real estate developer, owner, and operator, along with decades of market experience, Ellis has decades of market experience that greatly enhanced his client relationships. His legal acumen has led to successful representation that has favorably impacted the firm’s bottom line. He has successfully led numerous high-profile transactions over the past year, demonstrating his ability to structure and close deals that drive significant value for his clients.



THEANE EVANGELIS
Co-Chair, Global Litigation Practice
Gibson, Dunn & Crutcher LLP

Theane Evangelis has spent more than 20 years honing a practice that has positioned her as one of the country’s leading litigators. She serves as co-chair of Gibson Dunn’s global Litigation Practice Group and previously served as co-chair of the firm’s Class Action Practice Group.

Among her recent accomplishments has been her work achieving a groundbreaking victory at the Supreme Court of the United States on behalf of Grants Pass, Oregon, in a landmark case addressing whether the Eighth Amendment bars local governments from enforcing public-camping regulations. In a 6-3 decision handed down on June 28, the Supreme Court held that the constitutional prohibition on “cruel and unusual punishments” does not forbid regulation of camping on public property.



MILES FELDMAN
Founding Partner
Raines Feldman Littrell LLP

Miles Feldman is a founding partner of Raines Feldman Littrell LLP. He runs the Trials, Litigation and Dispute Resolution department of the firm with more than 15 litigators. A seasoned trial lawyer, Feldman has nearly three decades of experience handling hard fought and often high-profile cases through trial and appeal, as well as in numerous arbitration forums. Prior to launching Raines Feldman Littrell LLP more than 14 years ago, Feldman was a partner with two of Los Angeles’ most prominent business litigation firms.

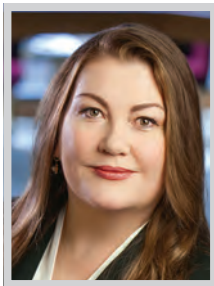
Feldman regularly gets results in cutting-edge litigation disputes for some of LA’s most forward-thinking and vanguard businesses in technology, media and finance. These include Belkin International, United Talent Agency, Julien’s Auctions, TikTok, Range Media, Fear of God and rapper Killer Mike.



ANDREW FOGG
Partner
Cox, Castle & Nicholson

Andrew Fogg is the state-wide co-chair of Cox Castle’s Land Use and Natural Resources group, which encompasses over 30 practicing lawyers that successfully help clients navigate through the permitting process for nearly every kind of real estate development project.

Fogg has extensive experience representing developers and select public entities in the land use entitlement process and related areas, including all aspects of planning, zoning, and environmental review, in cities and counties throughout California, as well as related land use litigation. He has a proven track record of successfully obtaining land use entitlements across a broad spectrum of product types, including residential, mixed-use transit-oriented developments, medical facilities, hospitality projects, industrial projects and master planned communities. He is a leading voice on land use related policy issues.



KATHERINE FORSTER
Partner
Munger, Tolles & Olson LLP

In Katherine Forster’s 22 years at Munger, Tolles & Olson, she has litigated over 100 class actions involving allegations of systemic discrimination and wage/hour violations, and she has been ranked among the top practitioners in her field by Chambers USA for the last 13 years. Her extensive experience, remarkable achievements and dedication to advancing both her clients’ interests and broader societal causes demonstrate why she is deserving of a place on the Top 100 Lawyers list.

Forster’s impressive client roster includes some of the most prominent names in various industries, such as Southern California Edison, BlackBerry, See’s Candies, Martin Luther King, Jr. Community Hospital, Planned Parenthood Los Angeles, Double-Line Capital, World Oil, NBCUniversal, Activision Blizzard, Clipboard, and the Downtown Women’s Center.

Relentlessly invested in **our clients' success.**



Kristen Richer

Barnes & Thornburg congratulates its own Kristen Richer on being named one of the Top 100 Lawyers in Los Angeles. Kristen's dedication, extensive experience and client-first approach continue to set the standard for excellence in the legal field.

Excellence isn't a milestone — it's our mindset.

**Barnes &
Thornburg**

btlaw.com



MICHAEL GARFINKEL
Partner
Venable LLP

A veteran of the entertainment and media industry, Michael Garfinkel returned to Venable in 2023, which was a pivotal moment in his long legal career in LA. Garfinkel, who previously worked at the firm from 2007 to 2011, is an entertainment and media litigator with more than 30 years of experience.

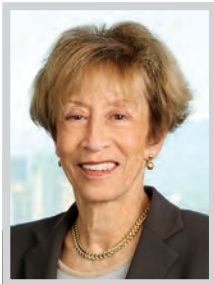
Garfinkel represents studios, production companies, talent agencies, advertising agencies and artists in matters involving intricate industry-specific agreements, trademarks, copyright and right of publicity disputes, trade secrets, and defamation. He also represents a variety of clients in commercial litigation, including limited liability company and partnership disputes and consumer class action defense. Last year, Garfinkel and his wife Stacey were once again recognized by the Anti-Defamation League as 2024 Distinguished Leader Honorees.



BOBBY GHAJAR
Partner
Cooley LLP

Cooley partner Bobby Ghajar is a distinguished trial attorney whose practice sits at the cutting edge of artificial intelligence copyright litigation. With over 25 years of experience, his landmark cases have set pivotal precedents in copyright, trademark and right of publicity law.

Ghajar is part of an exclusive group of attorneys in California who have successfully brought trademark and copyright claims to trial by jury, argued complex trademark cases before appellate courts and the United States Patent and Trademark Office, and managed global trademark portfolios for some of the world’s most iconic brands. Renowned as a thought leader and expert, Ghajar is frequently sought after to publish and speak on issues related to trademark, copyright, counterfeiting, right of publicity, and the intersection of these areas with AI technologies.



PATRICIA GLASER
Partner; Chair, Litigation Department
Glaser Weil

Patricia Glaser is head of Glaser Weil’s Litigation Department and tops the short list of trial attorneys in the nation sought after for high-stakes litigation. Respected as a business trial lawyer, she also provides general legal counsel to publicly and privately held companies across a range of industries, including entertainment, intellectual property, real estate, banking and securities. Her clients include Fortune 500 companies, major studios, real estate investors and developers, financial institutions, and high-profile entertainers and public figures.

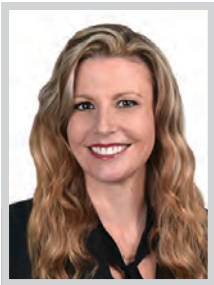
Glaser’s tenacious style of litigating, high level of personal attention to clients, and effectiveness in managing and training her teams has distinguished and defined Glaser Weil’s litigators and built the firm into what it is today – including 60+ attorneys, making up more than half of the firm.



MICHAEL GOLD
Partner; Chair, Cybersecurity and Privacy Group
Jeffer Mangels Butler & Mitchell LLP

Michael Gold is chair of JMBM’s Cybersecurity and Privacy Group. His clients include some of the best known brands in the world. He counsels clients on a wide variety of matters, including privacy law compliance, data breach and security incident responses, regulatory investigations, crisis management, development of computer-based information retention systems, and forensic investigations of computer systems.

Gold’s clients also rely on his counsel regarding emerging technologies such as AI and blockchain - and how these technologies will impact their businesses. He is known for his deep understanding of technology and has spoken at industry and professional programs about the unique privacy, governance and information security challenges presented by AI. He was also an early practitioner of “cybersecurity law.”



CHRISTINA N. GOODRICH
Managing Partner, Los Angeles Office
K&L Gates LLP

Christina Goodrich is an intellectual property litigator in the Los Angeles office of K&L Gates LLP – a fully-integrated full service global law firm. Goodrich has experience litigating complex civil cases in federal trial and appellate courts across the nation. She has trial experience in the International Trade Commission on a large patent infringement case and first chair arbitration experience in a complex and lengthy action in which she and her team secured a complete defense verdict.

Goodrich has consistently held numerous important leadership roles at the firm over the past 10 years while managing a busy litigation practice. She demonstrates dedication in all of her leadership roles, including through initiatives designed to increase the recruitment, development, retention and promotion of women and diverse individuals practicing in intellectual property.



DAVID GRAELER
Managing Partner; Chair, Management Committee
Nossaman

David Graeler serves as Nossaman’s managing partner and chair of the firm’s Management Committee. He previously served as chair of the Litigation Department and co-led the Real Estate Group. Graeler possesses more than 25 years of litigation and trial experience representing both plaintiffs and defendants. He excels at partnering with clients to identify their goals and to develop and execute winning strategies both inside and outside the courtroom.

Through the development of his civil trial practice, Graeler has honed his ability to communicate and connect with judges and juries, as well as with clients, witnesses, and other attorneys. He focuses his practice on the representation of public and private sector clients principally in the areas of real estate, eminent domain, construction and commercial disputes.



GABRIEL GREEN
Shareholder
Buchalter, APC

Gabriel G. Green is an experienced trial attorney and the firmwide co-chair of Buchalter’s Litigation Practice Group. Focusing his practice in the areas of complex business disputes, commercial real estate, intellectual property and franchising, Green is known as a problem solver who is able to win the most difficult cases. Understanding that cases are won through decisive and strategic planning, Green works in partnership with his clients to formulate plans designed to meet his clients’ objectives.

Green’s business litigation experience involves a variety of industries, including aerospace, automotive, oil and gas exploration and distribution, financing, professional services, hospitality, medical providers, commercial leasing and sales, real estate development, wholesalers and distributors of consumer products, internet based as well as brick and mortar retailers, elder care facilities and franchising.



KEITH GREGORY
Partner
Snell & Wilmer L.L.P.

Keith Gregory is a partner and leader at Snell & Wilmer, a full-service business law firm with more than 500 attorneys in 16 locations throughout the United States and in Mexico, including three offices in California. He serves as chair of the commercial litigation group in Los Angeles, co-chair of the commercial litigation group in California and as a member of the firm’s Ethics Committee.

Gregory practices in the areas of general business matters, corporate, franchise and partnership disputes, and intellectual property and commercial litigation. He is an experienced litigator, with considerable background in litigating government debarment proceedings, intellectual property issues, licensing agreements, trade secret matters and Uniform Commercial Code issues, especially within the electronic components, computer hardware and semi-conductor industries.



CONGRATULATIONS TO ALL
2025 LABJ
TOP 100 LAWYERS



OVER 18 MILLION SQUARE FEET
BUILT FOR THE
NATION'S TOP LAW FIRMS

© Eric Laignel

ABOUT CLUNE Clune Construction is an employee-owned, national general contractor that provides construction management services for some of the most respected companies in the world. With seven offices across the U.S., Clune manages over \$2.2 billion in projects annually and is ranked one of the Best Places to Work in Los Angeles.

CA License #732107





MIRA HASHMALL
Partner
Miller Barondess, LLP

Mira Hashmall is a respected trial lawyer with over 20 years of experience in guiding clients through high-stakes litigation and complex employment matters. Her trial experience in employment matters runs the gamut from whistleblower retaliation and wrongful termination cases to FEHA harassment, retaliation and discrimination claims. As a certified appellate specialist for the past decade, Hashmall combines her trial expertise with appellate knowledge, ensuring her clients receive effective representation. Her clients value the strategic advantage of having Hashmall represent them in trial and then seamlessly represent them on appeal while leveraging her deep understanding of every aspect of the case.

Among Hashmall's notable achievements has been successfully reversing an \$8.1 million ruling against the County of Los Angeles in a FEHA retaliation and harassment case.



STEPHEN J. HENNING
Founding Partner
Wood Smith Henning & Berman, LLP

As the co-founder of Wood Smith Henning & Berman, one of the largest law firms in the nation, Stephen Henning's impact on the field of law and the greater Los Angeles community cannot be overstated. The firm's exceptional track record in handling commercial litigation throughout the United States is a testament to Henning's visionary leadership – growing from a firm of nine lawyers in one office to over 500 lawyers in 42 offices in 22 states and London.

Henning is regularly retained to handle all facets of construction, real estate, employment and business litigation. His clients include Fortune 500 companies and prominent figures in the business community, some of the largest residential and commercial public and private owners, homebuilders, developers, investors, contractors and lenders.



JANE HINTON
Partner
Hunton Andrews Kurth LLP

With European and global banking roots, Jane Hinton possesses keen insight into the complexities of real estate deals and the critical issues for their stakeholders. As a partner in the Los Angeles office of Hunton on the Capital Finance & Real Estate Team, Hinton maintains a nationwide 360-degree real estate practice that includes representing clients in acquisitions, dispositions, leasing and portfolio property management, joint ventures as well as lending transactions at all levels throughout the capital stack, such as mortgage, mezzanine and preferred equity financing, with a particular focus on structuring debt and equity transactions.

Bringing a broad range of experience to commercial real estate and finance transactions, Hinton represents investors, financial institutions, investment funds and other clients in single-asset and portfolio transactions.



NICK HOBSON
Partner in Charge
Cooley LLP

Nick Hobson, the partner in charge and co-founder of Cooley's Santa Monica office, is a seasoned attorney specializing in the representation of emerging growth companies and their investors. His practice spans various areas, including venture capital and private equity financings, mergers and acquisitions, joint ventures, debt financings, equity compensation matters, and corporate governance. He works with companies throughout their lifecycle across diverse industries such as consumer products, entertainment, digital health, AI, fintech, cleantech and spacetech.

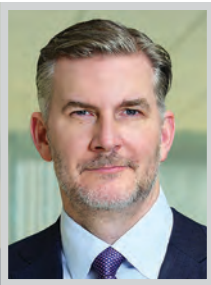
Hobson has navigated the complexities of negotiating financing transactions involving leading venture capital, growth equity, private equity and other institutional investors. He has also managed numerous sell-side transactions, joint ventures and complex partnering transactions. He is known for his comprehensive understanding of the legal and strategic needs of emerging growth companies.



MARK HOLSCHER
Partner
Kirkland & Ellis LLP

Mark Holscher is a partner in the Kirkland & Ellis' Los Angeles offices and is a member of the Commercial Litigation Practice Group. In the last five years, Holscher has obtained plaintiffs verdicts and settlements of over \$1.4 billion, with multiple nine figure recoveries. He has also successfully defended clients against multiple claims in excess of a billion dollars. His background as a former Assistant United States Attorney coupled with his successful civil trial record has established him as a "go to" lawyer for companies and individuals facing significant litigation.

Holscher is recognized as one of the few lawyers in the country who have obtained multiple dismissals of federal criminal matters post indictment, notably, four times in multiple districts.



BRIAN HORNE
Partner
Knobbe Martens

Brian Horne, managing partner of the Los Angeles office of IP law firm Knobbe Martens, is an industry-recognized leading trial lawyer who litigates headline-grabbing cases in Southern California and throughout the country. Horne's trial teams have won more than \$1 billion cumulatively and have won complete victories for defendants facing damages claims totaling more than \$750 million.

As managing partner of the firm's Los Angeles office, Horne plays a pivotal role in strategic planning and fostering a culture of excellence within the firm. Having served on the firm's litigation and executive committees, he routinely invests significant time mentoring the firm's up-and-coming litigators as well as providing direction and strategic planning for the Los Angeles office and the broader firm.



MARSHA HOUSTON
Partner
Reed Smith LLP

Marsha Houston is an equity partner with Reed Smith LLP and is an active member of the firm's Executive Committee where she acts as an advocate and fiduciary for the firm. Houston has decades of experience, and her practice focuses in the area of commercial restructuring and bankruptcy. Her clients praise her for her practical thinking, strategic advice and creative solutions.

Houston focuses her national practice on the representation of financial institutions, private equity funds, hedge funds, secured and unsecured lenders, creditors committees, entertainment clients, receivers, trustees, manufacturers and investors, primarily in litigation, enforcement, restructuring, and Chapter 11 reorganization matters, assignments for the benefit of creditors, a broad range of bankruptcy and creditors' rights matters, and the protection of intellectual property rights.



ESRA HUDSON
Partner; Leader, Employment and Labor
Manatt, Phelps & Phillips

As leader of Manatt's Employment and Labor practice, Esra Hudson has established herself as the go-to employment adviser for iconic entertainment companies, national insurance providers, well-known medical centers and leading financial services companies through her deft defense against wage and hour class and collective actions, PAGA representative matters, and trade secret and unfair competition claims. With extensive experience in crisis management and media relations, including in sensitive matters involving executives and high-profile individuals, Hudson has successfully represented employers in proceedings across a number of forums, as well as in alternative dispute resolution and arbitration, often saving her clients financial and reputational damage in claims, or even avoiding litigation altogether.

Notably, Esra is representing Blake Lively in her ongoing litigation against Justin Baldoni, Wayfarer Studios and related parties.

HUESTON HENNIGAN LLP

Congratulations



MARSHALL A. CAMP

2025 Top 100 Lawyers

—Los Angeles Business Journal



STEPHANIE HURST
Partner
Mayer Brown

Stephanie Hurst has played a key role in the expansion of the firm’s M&A practice, client roster as well as increasing the diversity of the Los Angeles office. She has worked on dozens of innovative and complex deals involving multiple jurisdictions and in evolving and emerging areas including tech and Environmental, Social, and Governance.

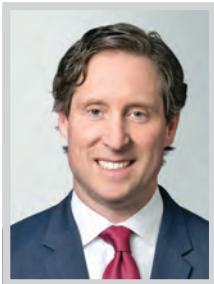
Hurst is also working with VC firms on their investments in diverse and underrepresented businesses as well as family offices identifying potential investment opportunities in start-ups located in key venture capital and growth spaces in California, including Silicon Beach and Silicon Valley. She is passionate about pro bono having logged more than 1,700 hours since she started at the firm in 2011. She also plays a pivotal role in summer associate recruiting.



TRACEY KENNEDY
Partner
Sheppard, Mullin, Richter & Hampton LLP

Tracey Kennedy is a go-to Los Angeles trial attorney in California. For over 30 years, she has represented clients in discrimination, harassment and wrongful termination cases, earning an impressive win record – including three multi-million-dollar wage-and-hour cases. Her clients describe her as “an outstanding trial lawyer; absolutely fantastic and deserving of high accolades” – praise she has continuously lived up to.

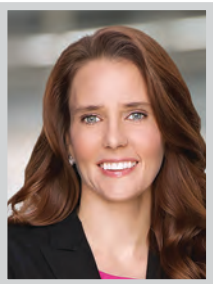
Kennedy’s recent trial successes include her recent work leading to winning a complete defense verdict for Motion Picture Association following a five-day jury trial. The plaintiff, who testified that “travel is my therapy,” despite being unemployed for seven years, had alleged her inclusion in a 2017 reduction in force was the result of gender discrimination and retaliation. Kennedy and the trial team kept their arguments simple, and the jury agreed.



GREGORY KNOPP
Partner
Proskauer Rose LLP

Over his more than 25 year career, Greg Knopp has built a strong track record of successfully defending some of the world’s most prominent companies in complex employment litigation across both state and federal courts, in California and beyond. He specializes in class action and Private Attorneys General Act (PAGA) cases and has led some of the nation’s most closely watched employment disputes – cases with outcomes that often set important precedents for employers in California and nationwide.

Knopp’s deep understanding of employment law spans wage and hour disputes, wrongful termination, discrimination, and harassment cases. His clients include major entertainment studios, leading retailers and professional sports leagues, as well as financial services firms, technology companies, transportation providers and healthcare organizations.



LORI KOZAK
Partner; Trademarks Practice Chair
Fox Rothschild

Lori Kozak is the chair of the national Trademarks Practice Group at Fox Rothschild, a full-service law firm with 1000 attorneys coast to coast. Based in Los Angeles, she strategically manages global trademark portfolios for multinational corporations, technology startups and entertainment companies.

A former US Patent and Trademark Office Trademark examining attorney, Kozak is trusted by major and up-and-coming players in the entertainment, technology, apparel, energy, computer science, food and beverage, and telecommunications industries to protect their most valuable assets: their intellectual property. She is a past chair and current board member of Court Appointed Special Advocates of Los Angeles, a nonprofit that organizes the community to take action and advocate for children and families in LA County’s overburdened child welfare and juvenile justice systems.



DANA KRAVETZ
Firm Managing Partner
Michelman & Robinson, LLP

As firm managing partner of Michelman & Robinson, LLP (M&R), Dana Kravetz has made an indelible mark across the legal landscape. Representing iconic clients such as, The Gersh Agency, Accor North America, Fairmont Hotels & Resorts, Marriott International, Riot Games, Arena Club, Sunset Tower Hotel, and San Vicente Bungalows, Kravetz’s roster of clientele reads like a who’s who of LA’s leading businesses. His solutions-driven, pragmatic approach to employment law – bolstered by deep expertise in the hospitality sector – has earned him a reputation as one of the most trusted attorneys in the industry.

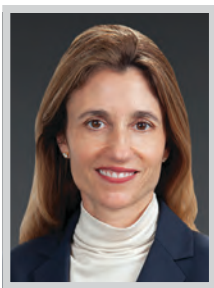
Kravetz’s legal acumen extends to addressing complex employment disputes, navigating executive compensation matters, and ensuring compliance with California’s evolving employment laws. He is known for his ability to anticipate challenges and deliver tailored solutions.



DAVID LASH
Managing Counsel, Pro Bono and Public Interest Services
O’Melveny & Myers LLP

David Lash is a leading pro bono professional in Los Angeles. He has been a litigator in private practice, focusing largely on real estate and other business disputes. He then served for nine years as the executive director of Bet Tzedek Legal Services, one of the largest legal aid organizations in the United States, providing high quality, life-affirming and life-saving legal services to thousands of low-income, elderly and disabled clients, completely free of charge and regardless of race, religion, immigration status, national origin.

For the past 20+ years Lash has been the managing counsel for pro bono and public interest services at the international law firm of O’Melveny & Myers LLP, directing one of the most decorated pro bono programs in the nations.



SUSAN LEADER
Partner
Paul Hastings LLP

Susan Leader joined Paul Hastings in May 2023, adding further depth to the firm’s Entertainment & Media litigation practice. Leader not only has experience leading complex litigations but also serving as a first chair in trying those cases in front of a judge, jury, or in arbitration. Since joining the firm, Leader has shown that her litigation capabilities also extend well beyond the entertainment industry, as she has led several successful litigation matters for the firm’s clients in the tech and energy sectors, among others.

Over the last year, Leader has solidified herself as a go-to litigator and a premier trial lawyer from coast-to-coast. Her successes of late come on behalf of both plaintiffs and defendants, and include her recent back-to-back defense verdict wins for RWE Renewables.

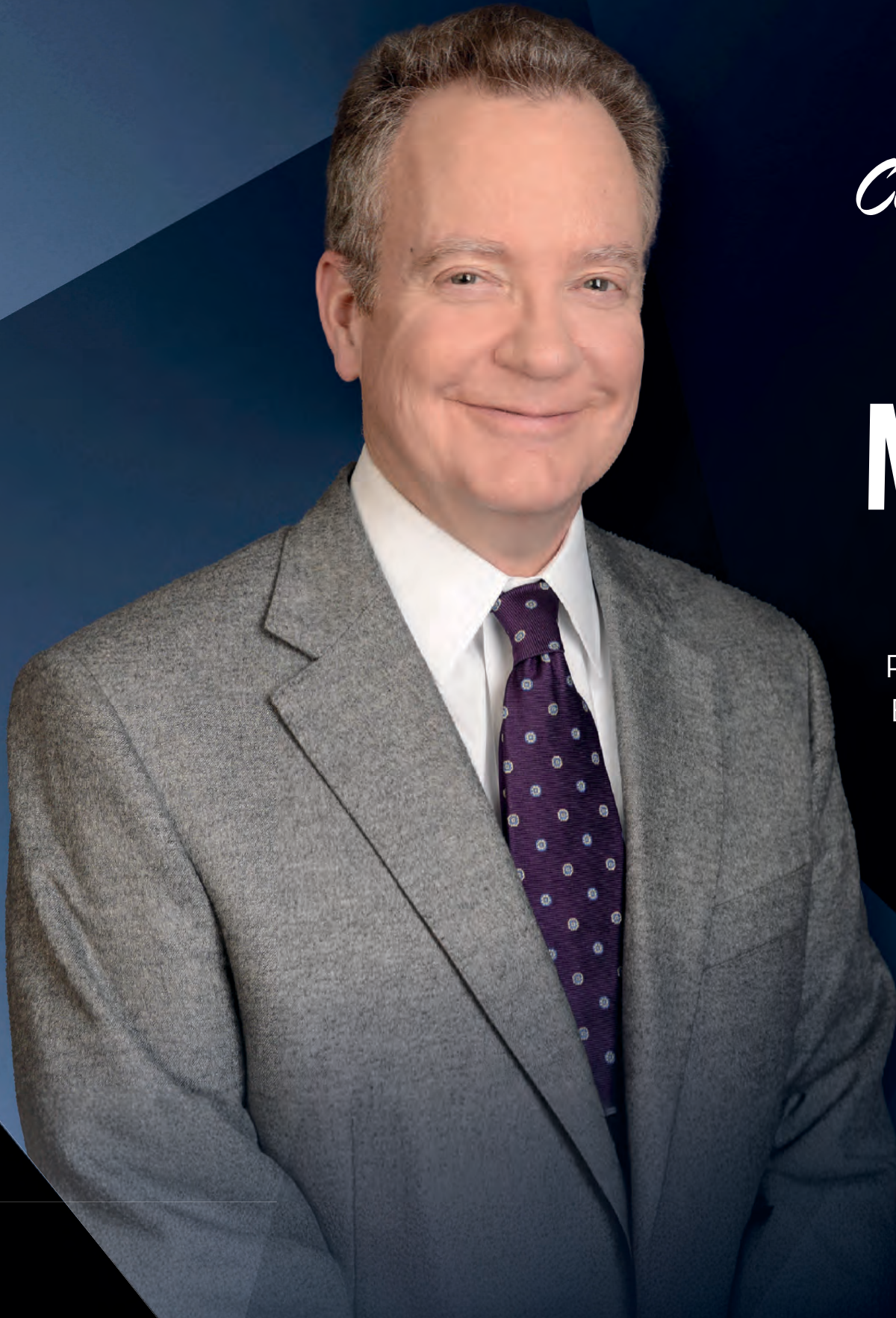


ADAM LEVIN
Partner
Mitchell Silberberg & Knupp LLP

At a time when the ability of media organizations to express themselves freely and maintain commitments to diversity face unprecedented threats, Adam Levin’s work has never been more valuable.

Twenty-five years ago, in a case against Friends writers, Levin clarified the principle that writing-room comments were protected expression – and that the First Amendment doesn’t stop at the studio gate. The litigation made Levin the preferred counsel for industry defendants in employment lawsuits, and today he is applying the defense for Bravo in several high-profile cases. Levin prevailed for Warner Bros. in a “reverse discrimination” case brought by a former camera operator in a case that could have impacted the industry’s attempts to diversify. He also continues to represent several major studios in ongoing labor and employment litigation matters.

2025 TOP 100 LAWYERS OF LOS ANGELES



Congratulations

**James
Menton**

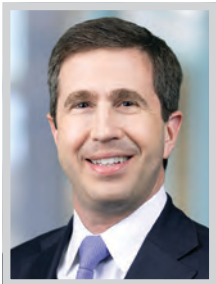
PARTNER
CHAIR, CORPORATE
RESTRUCTURING AND
BANKRUPTCY GROUP

**WE ARE PROUD TO SPONSOR THE 4TH ANNUAL LOS ANGELES
BUSINESS JOURNAL TOP 100 LAWYERS AWARD BANQUET.**

Congratulations to all honorees. We join you in celebrating the
top law professionals in the Los Angeles region.

ROBINS  KAPLAN LLP

800 553 9910 | [ROBINSKAPLAN.COM](https://www.robinskaplan.com)



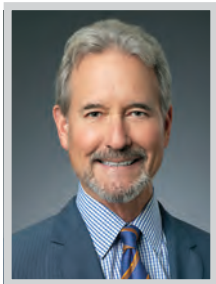
DANIEL LEVIN
Partner
Munger, Tolles & Olson LLP

Daniel B. Levin, a trial and litigation partner at Munger, Tolles & Olson in Los Angeles, possesses extensive professional experience and remarkable success. Levin’s career is marked by a wealth of experience in complex litigation, white collar defense and investigations. As a seasoned litigator and former deputy chief of criminal appeals in the US Attorney’s Office, Levin has consistently demonstrated his ability to navigate high-stakes legal challenges and complex appellate matters. His practice focuses on resolving intricate issues involving high-profile government investigations, mass torts and multidistrict litigation with substantial financial implications. Levin’s expertise extends to defending companies accused of violations under the False Claims Act, environmental regulations and government contracts, as well as criminal conduct.



AARON LEWIS
Partner; Co-Chair, White Collar Defense and Investigations Practice Group
Covington & Burling LLP

Few recent developments have had a greater impact on public companies and their boards of directors than the increasing number of shareholder proposals calling for civil rights or racial equity audits. Aaron Lewis has been a leader and innovator in this rapidly evolving frontier at the intersection of ESG and traditional internal investigations, since it first emerged in 2016. This foundation of experience includes helping to lead Covington’s work to support the first civil rights audit for Airbnb, as well as the firm’s assessments of Starbucks’ efforts to promote civil rights, equity, diversity, and inclusion, and also more recent engagements for BlackRock, Citibank, KeyCorp, Verizon, Uber, Dow, Wells Fargo and other public companies in a variety of industries.



JONATHAN LIGHT
Managing Partner
LightGabler LLP

Jonathan Fraser Light has over 40 years of experience in the field of employment law. He co-founded LightGabler in 2011. As the managing partner, Light and his 23+ attorney team members grew the firm to where it now consults with over 5,000 companies. Light has successfully tried a range of cases, including jury and court trials, arbitrations and Labor Commission hearings. Case results include the defense of employers accused of wrongful termination, sexual harassment, race discrimination, wage and hour, and other matters. He has been lead trial counsel on at least 50 class action and PAGA wage and hour cases. He has also appeared before the federal EEOC and federal Labor Department, the state Civil Rights Department, the National Labor Relations Board, and other government agencies.



JAYME LONG
Partner
DLA Piper

Jayme Long is a first-chair trial attorney who has tried cases for some of the largest companies in the world. She serves on multiple national trial teams in high profile product liability, industrial premises liability and mass tort cases around the country. She represents clients in the energy, manufacturing, medical and safety sectors globally, and in state and federal courts in the United States. With her courtroom experience and deep understanding of the science and medicine often rooted in these cases, Long successfully defends companies at every stage of a lawsuit – from the threat of litigation through appeal. She serves on multiple national trial teams for major energy companies and product manufacturers. She has taken multiple cases to verdict and has obtained at least four nonsuit judgments.

2025

TOP 100 LAWYERS

Los Angeles Business Journal

SKIP
MILLER

MIRA
HASHMALL

MILLER BARONDESS, LLP
Trial | Appeal | Arbitration



MILLERBARONDESS.COM

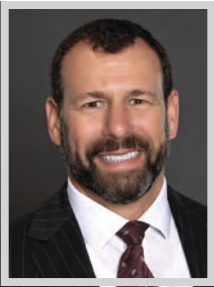


ANGELA MACHALA

Los Angeles Office Managing Partner
Winston & Strawn LLP

Since 2021, Angela Machala has been the managing partner of Winston & Strawn LLP's Los Angeles office. Winston is one of the 50 largest firms in the United States, and Machala successfully leads LA's 80-person team while also maintaining her litigation practice. Some of Machala's most striking case-related career accomplishments to date involve successfully getting criminal charges dropped against her clients before trial, against all odds. Her track record is due in part to her diligence in researching and investigating these cases, as well as her finely honed ability to use the resulting facts to educate and persuade prosecutors of her clients' innocence.

Clients trust Machala with overseeing sensitive internal investigations into allegations involving fraud, theft of trade secrets, kickbacks and other corporate impropriety.

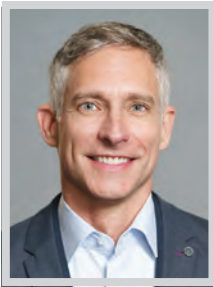


MICHAEL MALLOW

Managing Partner, Los Angeles
Shook, Hardy & Bacon L.L.P.

Michael Mallow is the managing partner of Shook, Hardy & Bacon's Los Angeles office, co-chairs the firm's class action and appellate practice group, and helps lead the firm's automotive practice, in addition to maintaining a busy litigation practice.

Mallow was instrumental in launching the Los Angeles office five years ago and through his reputation, network and growing client needs, has been able to grow the office to 27 attorneys. Mallow's goal is to keep that expansion moving forward and attract 45-50 attorneys to LA in the next five years. Mallow has defended companies in consumer litigation for more than 25 years. He has represented clients in class action and complex litigation matters, including cases related to economic product defects, unfair competition, false and deceptive advertising, and privacy.



SCOTT MALZAHN

Managing Partner
Waymaker LLP

One of California's leading litigators, Scott Malzahn is managing partner of Waymaker LLP. He has a complex commercial litigation practice that spans intellectual property, fintech and class actions in the securities arena. In 2024, Malzahn and the Waymaker team won a \$18.3 million award in a trade secret theft case and he recently tried another confidential dispute in an arbitration.

In addition to his trial experience, Malzahn has handled – and won – high-profile disputes through motion practice before the trial court and on appeal. Among others, he crafted the winning legal arguments adopted unanimously by the California Supreme Court in *FilmOn, Inc. v. Double-Verify, Inc.*, which established a new legal test to govern anti-SLAPP cases under the catchall provision.



CHRIS MANDERSON

Partner
Ervin Cohen & Jessup LLP

Chris Manderson is a partner and chair of the Corporate Department Ervin Cohen & Jessup. Manderson specializes in mergers & acquisitions, venture capital, debt and equity financing, distressed and restructuring transactions, and preserving and utilizing Net Operating Loss tax assets. He also advises public and private company boards and executives on corporate governance.

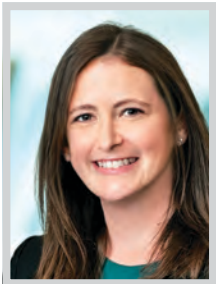
Manderson began his career as a transactional lawyer representing public companies, private equity funds, boards and executives in M&A and finance transactions at Skadden, Arps, Slate, Meagher & Flom LLP and Paul Hastings LLP. He also served as executive vice president & general counsel at Real Industry, Inc., where he guided the company through a \$525 million acquisition of an aluminum recycling business, and subsequent NASDAQ listing.

Baker McKenzie congratulates **Perrie Weiner** for his inclusion on the list of **Los Angeles Business Journal's 2025 Top 100 Lawyers.**

PERRIE WEINER

Partner-in-Charge of Baker McKenzie's Los Angeles Office
Chair of the Firm's North America Securities Litigation Group

Over the past 4 years, our Los Angeles office has grown from 4 to over 72 lawyers and professional staff.



CLAIRE MARBLESTONE
Partner
Foley & Lardner LLP

Claire Marblestone stands out in the California legal market by being at the forefront of her practice or corporate transactional and health care regulatory matters. Her practice is characterized by a keen focus on data privacy, the corporate practice of medicine, health care mergers and acquisitions, and joint ventures has positioned her as a pivotal figure in this legal landscape.

Marblestone’s work advising hospitals, health systems, physician groups, digital health providers, and health care businesses on a spectrum of regulatory and compliance issues showcases her comprehensive expertise and dedication to the sector. Her career as a standout attorney is marked by her exceptional skills as transactional counsel. She conducts meticulous health regulatory due diligence and provides advice on health care company acquisitions and investments.



GLEN MASTROBERTE
Partner
Skadden, Arps, Slate, Meagher & Flom LLP

Glen Mastroberte is an entertainment lawyer who has played a pivotal role in the development of Skadden’s Los Angeles media and entertainment practice, elevating it to both national and international acclaim. With a diverse and dynamic practice, Mastroberte boasts an impressive track record of representing a wide array of clients, including investors, private equity firms, financial institutions, studios, production and distribution companies, music labels, gaming enterprises, artists, and producers.

Mastroberte’s expertise spans all legal and business facets of the media and entertainment industries. Additionally, he adeptly manages general corporate matters related to the financing, production, licensing, distribution and utilization of motion pictures, television programs, and other intellectual property assets.



JAMES MENTON
Partner; Chair, Corporate Restructuring and Bankruptcy Group
Robins Kaplan LLP

James Menton is a partner at Robins Kaplan and chair of the Corporate Restructuring and Bankruptcy Group. His practice focuses on all types of fiduciary disputes, creditor’s rights and remedies, and corporate restructuring and bankruptcy matters. A skilled advisor and litigator, Menton draws upon his extensive professional network to provide clients with strategic resources and solutions in their cases.

Menton has decades of experience in areas that include insolvency-related matters, including complex corporate bankruptcies, distressed-debt litigation and complex collection matters. His experience with respect to distressed corporate situations, secured transactions, and the corporate bankruptcy process forms an integral part of his clients’ strategic planning.



BRIAN MICHAEL
Partner, Investigations & White Collar Defense Group; Chair, Global Ethics & Compliance Practice
Morrison Foerster LLP

Brian R. Michael is a partner in Morrison Foerster’s Investigations + White Collar Defense Group and the chair of the firm’s Global Ethics + Compliance practice. Drawing on more than 25 years of experience as an in-house leader, in private practice, and as a federal prosecutor in the Southern District of New York and the Central District of California, Michael is routinely engaged to represent entities and individuals in high-profile, high-stakes white collar criminal cases, internal investigations, securities and regulatory enforcement matters, complex litigation, and trials.

Michael’s practice also focuses on providing crisis management and compliance counseling, including on anti-corruption, cybersecurity, FinTech, blockchain technology, trade sanctions and workplace conduct.



Lagerlof LLP

LAWYERS

WE ARE A TEAM OF **TRUSTED LEGAL ADVISORS** ON A MISSION TO PROVIDE EVERY CLIENT WITH CLARITY AND UNDERSTANDING TO SUCCEED IN A COMPLEX WORLD.

Practice Areas:

Estate Planning
Corporate & Tax
Public Agency
Real Estate
Litigation
Intellectual Property
Healthcare

Insolvency
Employment
Elder Law
Private Fiduciary
Banking & Financial Services
Estate Settlement & Probate
Commercial Litigation

Locations in Pasadena, Encino, El Segundo, and Seattle, WA.



Lagerlof.com | (626)793-9400

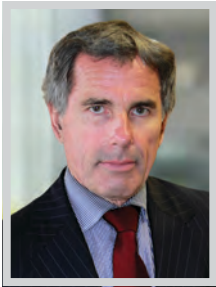




SANFORD MICHELMAN
Chairman & Co-Founder
Michelman & Robinson, LLP

As co-founder of Michelman & Robinson, LLP, Sanford Michelman has been repeatedly recognized for his outstanding achievements. As a trusted advisor to C-suite executives and business leaders, Michelman is sought after for his ability to navigate high-stakes litigation and complex business challenges.

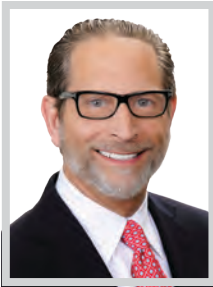
With a practice that spans industries – insurance, advertising, private equity, and more, Michelman’s strategic counsel has been instrumental in shaping M&R’s trajectory. Michelman’s leadership has propelled the firm’s measured growth to seven offices nationwide. The firm’s focus on client-centric strategies and Michelman’s ability to deliver results in “bet the company” matters have set a benchmark for excellence. His macro-economic insights make him an invaluable resource for business clients.



SKIP MILLER
Partner
Miller Barondess, LLP

Skip Miller is an experienced and prominent trial lawyer. He is also renowned for his strategic counsel in major litigation. Miller has served as lead trial counsel in more than a hundred state and federal cases, representing private and public corporations, Fortune 500 companies, individual clients including entertainers and governmental entities.

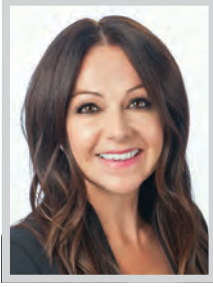
Miller defended a client in a complex criminal conspiracy and securities fraud trial in the Southern District of California. After a hung jury, he secured a full dismissal of charges. As counsel for the trustee of the Woodbridge Liquidation Trust, he resolved a \$1.3 billion Ponzi scheme case against multiple professionals for aiding and abetting the scheme. Through mediations, he secured substantial confidential settlements before discovery, saving significant expense.



ROBERT “BOB” MILLMAN
Shareholder
Littler

With 50 years of experience practicing labor and employment law, Bob Millman continues to be widely recognized as one of the deans of the management labor and employment bar in California. Employers across the nation seek out his counsel and guidance, and he is regularly featured in prominent media outlets for his vast knowledge on labor and employment issues.

Millman joined Littler in the fall of 1974 right after law school as the firm’s 18th attorney and is now a senior shareholder at the firm. As the founder of Littler’s two Los Angeles offices and former chair of its board of directors, he has been an integral part of the growth, development and success of the firm for 50 years.



TANIA MOYRON
Partner
Dentons

Los Angeles-based partner Tania Moyron, a member of the Dentons US Board, serves as chair of the US Restructuring, Insolvency and Bankruptcy (RIB) Group and US Region co-chair of the Global RIB Group. Moyron is well-known for her skill and finesse in both out-of-court and in-court restructurings spanning a variety of industries including health care, retail, entertainment, trucking and real estate. In addition, she leads Dentons’ Practice Group Diversity Partners initiative for RIB.

Through college and law school, Moyron balanced the demands of employment and academics during her self-financed education, while being a pillar of strength for her family, members of whom battled cancer, addiction and Alzheimer’s. Having surmounted such obstacles, Moyron has sought to help young women and diverse lawyers navigate similar terrain.

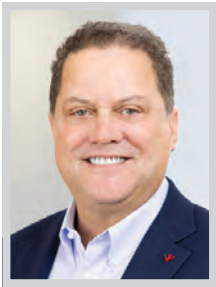
Holland & Knight congratulates our own
Susan Booth and **Vivian Lee Thoreen**
for being named Top 100 Lawyers by the *Los Angeles Business Journal*.

We join in celebrating them and all honorees for their ongoing efforts as outstanding legal stewards and their many achievements as leading lawyers within the Los Angeles business community.

Holland & Knight
www.hklaw.com

Los Angeles, CA | +1.213.896.2400



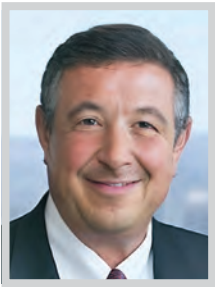


JASON MURRAY

Partner; Antitrust & Competition Group Co-Chair
Crowell & Moring LLP

Jason Murray is one of the most sought-after antitrust lawyers in the nation with a wealth of professional experience and a proven track record of success. Murray is the go-to expert for clients facing critical antitrust litigation and counseling needs. As co-chair of the firm’s Antitrust and Competition Group, his practice encompasses antitrust litigation for both plaintiffs and defendants, antitrust counseling and defense in connection with state attorneys general, and Federal Trade Commission investigations, and business advice on avoiding antitrust risks in transactions, distribution practices, and competitor collaborations.

Murray’s expertise is notable in antitrust cartel litigation, monopolization, and exclusive dealing cases across various industries, including healthcare, technology, transportation, entertainment and telecommunications.

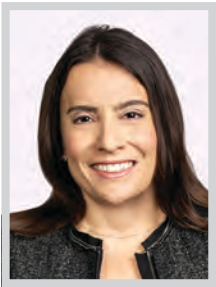


MARK NEUBAUER

Los Angeles Office Managing Shareholder
Carlton Fields

Throughout more than 45 years of practice, Mark Neubauer has achieved key litigation victories for some of the world’s most well-known companies, protecting them from multimillion-dollar claims. He has tried jury and bench trials in state and federal courts, focusing on sophisticated litigation, including commercial, securities, antitrust, real estate, employment and entertainment matters. As the founding managing shareholder of Carlton Fields’ Los Angeles office, Neubauer was instrumental in establishing and expanding the firm’s California presence.

Client service and communication are at the heart of Neubauer’s success. His client philosophy is rooted in understanding the client’s business needs and goals, and then collaborating with the client on strategy decisions and keeping the client informed of the progress of their matter.



ANDREA “ANDY” OXMAN

Principal
Jackson Lewis P.C.

Andrea F. “Andy” Oxman is a principal in the Los Angeles office at Jackson Lewis P.C., a national workplace law firm. She has a distinguished career representing employers and defending against single-plaintiff and class action litigation.

With extensive experience in state and federal courts, Oxman specializes in cases involving discrimination, reasonable accommodation, retaliation and harassment, as well as wage and hour class actions and PAGA actions. She works with clients across all industries including, but not limited to, aerospace, retail, construction, hospitality, logistics, technology and manufacturing. For each employment matter that she handles, Oxman takes the time to understand her client’s needs and business goals from the beginning and works collaboratively with them to develop a litigation strategy.



JAYESH PATEL

Partner
Norton Rose Fulbright US LLP

A trial lawyer and strategic advisor for his clients on a wide range of business issues, Jayesh Patel isn’t focused on his win-to-loss ratio or the millions of dollars in favorable judgements that he has secured over his nearly four-decade career.

Now a partner at global law firm Norton Rose Fulbright’s Los Angeles office, Patel has been practicing law since 1987, long before there was a blueprint for an Indian American litigator in Los Angeles. Following the path to law inspired by his lifelong interest in puzzles and an uncanny skillset for problem solving, Patel found his calling in law and never looked back. Today, he continues to help clients tackle and resolve complex financial, real estate and commercial matters on a wide range of business issues.

GT GreenbergTraurig

Congratulations

Greenberg Traurig congratulates the
Los Angeles Business Journal Top 100 Lawyers 2025,
including our own Los Angeles Shareholders
Mathew S. Rosengart and Nina D. Boyajian.

Thank you for your leadership, vision, passion
and advocacy.

GREENBERG TRAUIG, LLP | ATTORNEYS AT LAW | 2850 ATTORNEYS | 49 LOCATIONS WORLDWIDE° | GTLAW.COM

1840 Century Park East | Suite 1900 | Los Angeles, CA 90067 | 310.586.7700

Greenberg Traurig, LLP

GreenbergTraurigLLP

GT_Law

GT_Law

Greenberg Traurig is a service mark and trade name of Greenberg Traurig, LLP and Greenberg Traurig, P.A. ©2025 Greenberg Traurig, LLP. Attorneys at Law. All rights reserved. Attorney Advertising. °These numbers are subject to fluctuation.

42127

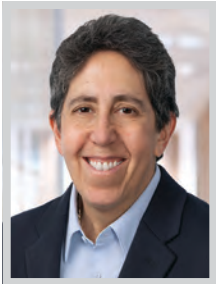
WORLDWIDE LOCATIONS
United States, Europe,
and the Middle East,
Asia, Latin America



PURVI G. PATEL

Partner (Complex Litigation, Class Actions + Mass Torts, Privacy + Data Security Groups)
Morrison Foerster

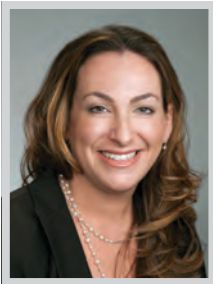
Purvi Patel represents retail, e-commerce, and other consumer-oriented businesses in significant cybersecurity, data privacy and data security matters. Patel has a defined niche that cuts across practices and is a recognized leader in defending lawsuits involving data breaches, unauthorized access, and the use and disclosure of personally identifiable information. She has built a robust practice advising household names on cybersecurity and compliance issues and defending them in complex and class action litigation in federal and state courts across the country, winning motions to dismiss, defeating class certification, and securing summary disposition in several multimillion-dollar lawsuits in some of the most plaintiff-friendly jurisdictions nationwide.



JENNIFER POST

Managing Partner, Los Angeles Office
Thompson Coburn LLP

Jennifer Post is the managing partner of Thompson Coburn LLP's Los Angeles office and co-chair of the emerging companies group, specializing in corporate law, commercial finance and securities transactions. She represents entities nationwide in venture capital, M&A, fund formation and corporate finance and securities matters. She has played a key role in shaping the strategic direction and growth of the Los Angeles office as managing partner, positioning the firm at the forefront of legal innovation in emerging areas. With deep expertise in venture debt and private credit markets, Post advises investors, lenders and emerging companies, particularly in technology, fintech, life sciences, SaaS and consumer brands. Post develops innovative financing structures that advance her clients' businesses.



AMY QUARTAROLO

Partner; Co-Chair, Litigation & Trial Department in Los Angeles
Latham & Watkins LLP

Partner Amy Quartarolo, is a powerhouse litigator establishing important legal precedent while also setting the strategic vision of Latham's LA-based disputes team as co-chair of the Litigation & Trial Department. Quartarolo has also built a premier bankruptcy litigation and creditors' rights practice, counseling both debtors and creditors in a wide range of bankruptcy-related and complex commercial litigation. She regularly argues high-profile cases in both state and federal courts as well as the Ninth Circuit Court of Appeals. Quartarolo is a member of the firm's Equal Opportunity Employment Review Board, and previously served on the firm's Recruiting Committee, Pro Bono Committee, Training and Career Enhancement Committee, and Women Enriching Business Committee.



JUSTIN RAWLINS

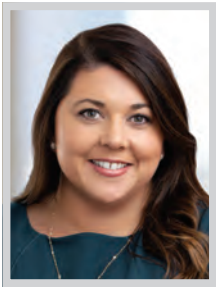
Partner
Paul Hastings LLP

Justin Rawlins is vice chair and managing director of Paul Hastings' global financial restructuring group, and a member of the Global Finance practice at the firm. Rawlins principally represents asset managers and lenders investing in private businesses with an emphasis on complex financings, special situations and restructurings. In 2024, Rawlins' high-volume practice spanned corporate bankruptcy, debt finance and special situations. He successfully orchestrated the complete recovery of Raven Capital's business, guided TCW through Navistar's out-of-court restructuring and advised Sorrento Therapeutics in a bankruptcy that stood out for its layers of complexity. He serves on the University of Southern California President's Leadership Council, and is a board member for both St. John's Hospital in Santa Monica and its foundation.

BACK-TO-BACK
BRILLIANCE!

HUGE CONGRATULATIONS TO WSHB FOUNDING PARTNER
STEPHEN HENNING FOR BEING NAMED ONE OF THE
LOS ANGELES BUSINESS JOURNAL'S TOP 100
LAWYERS TWO YEARS RUNNING!

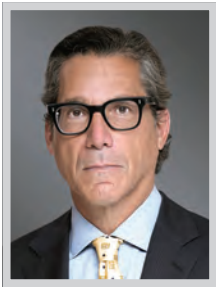
YOUR TALENT, TENACITY, AND TRAILBLAZING SPIRIT
INSPIRE US ALL.



KRISTEN RICHER
Partner
Barnes & Thornburg LLP

Kristen Richer is a distinguished litigator and trusted leader at Barnes & Thornburg, where she has earned partnership. Her impact on the legal profession is marked by her role in leading high-stakes, multi-billion-dollar litigation and her pioneering work in pharmaceutical and medical device litigation, product liability, mass torts, consumer class action defense and regulatory advisement.

Richer's legal acumen is reflected in her service as liaison counsel for more than 10 pharmacy defendants in a multidistrict litigation (MDL) involving personal injury, economic loss class claims and medical monitoring class claims. She also holds a leadership position on the Defense Executive Committee for an ongoing product liability MDL and was appointed as defense liaison counsel to the court in this high-profile case.



MATHEW ROSENGART
Shareholder
Greenberg Traurig, LLP

A former federal prosecutor and trial attorney for the United States Department of Justice, Mathew Rosengart is widely recognized as one of the nation's preeminent litigators. He received international acclaim for leading the historic fight to free Britney Spears from a 13-year conservatorship which stripped her of fundamental civil rights and liberties. Rosengart's other clients include, among others, Verizon, CAA, William Morris Endeavor, Pinterest, Steven Spielberg, Keanu Reeves, Julia Louis-Dreyfus, Lena Dunham and Michael Mann.

A former governor and current executive committee member of the Beverly Hills Bar Association, member of Tulane University's Dean's Advisory Council, and as general counsel to Sean Penn's charitable organization CORE, Rosengart continues to serve as a leader in addition to his practice.



KRISTINA ROYCE
Partner; Co-Chair, Matrimonial and Family Law Practice Group
Blank Rome LLP

For more than two decades, Kristina Royce has dedicated her law practice to advising distinguished individuals in high-stakes divorce and custody matters. She is highly regarded for complex financial valuations, tracings, cash flow analyses, pre- and post-nuptial agreements, and keen mediation skills.

In 2020, Royce was tapped by her firm Blank Rome to co-chair its bi-coastal matrimonial & family law practice – one of the largest such practices in the country with 35 attorneys. In this leadership role, she consults firm attorneys on matters, mentors younger attorneys and keeps a vigilant eye on the practice group's productivity, all while carrying her own considerable caseload. She is also a member of Blank Rome's Partners Board.



DANIEL ROZANSKY
Partner
Brown Rudnick

Throughout his nearly three decades practicing law, Brown Rudnick's partner Daniel Rozansky has earned a reputation as a go-to litigator amongst some of Hollywood's most high-profile figures. If Rozansky is unable to resolve matters either through pre-dispute discussions, settlement negotiations or law and motion practice, he routinely tries or arbitrates those disputes. Rozansky also regularly appears before state and federal circuit courts of appeals.

Rozansky represents clients across multiple platforms including film, television, music, concerts and touring, and digital media. He has prevailed in some of Hollywood's most significant cases in the areas of copyright, trademark, First Amendment, profit participation, reality television, rights of publicity, rights of privacy and breach of implied contract.

**Leadership That Moves
Our Firm and Clients Forward**



Honoring Sanford Michelman
and Dana Kravetz recognized by
the *Los Angeles Business Journal* as

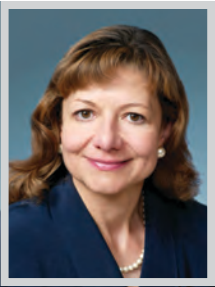
**TOP 100
LAWYERS**



SANFORD MICHELMAN
Co-Founding Partner
310.299.5500
smichelman@mrlp.com



DANA KRAVETZ
Firm Managing Partner
310.299.5500
dkravetz@mrlp.com



KELLI SAGER
Partner
Davis Wright Tremaine LLP

For nearly four decades, Kelli Sager has represented media and entertainment companies, including broadcasters, film producers and distributors, newspapers and magazines, and Web publishers, as well as individual journalists and authors. She joined Davis Wright Tremaine as a partner in 1994 to develop the firm’s media and entertainment practice in California, which has grown to include more than 30 lawyers statewide (and more than 60 nationally), who handle litigation, production work and transactional matters in the media and entertainment industry.

Sager has argued dozens of times in federal and state appellate courts, including many times in the California Supreme Court and 9th Circuit Court of Appeals, achieving results for her clients that include precedent-setting rulings protecting their rights to gather and disseminate content to the public.



ROBIN SAMUEL
Partner; Leader, US Labor & Employment Team; Co-Chair, Workforce Redesign Service Line; Steering Committee Member, North American Employment and Compensation Practice
Baker McKenzie

Robin Samuel leads a team of more than 30 attorneys and business professionals as head of Baker McKenzie’s United States Labor & Employment practice group. He also co-chairs the firm’s workforce redesign service line, which helps clients address issues with changing work dynamics and models across the globe, including the incorporation of AI into employment and recruiting, new ways and models of working, and employee mobility. As a member of the North America Steering Committee for the employment and compensation practice, he provides strategic direction for key practice groups of the firm.

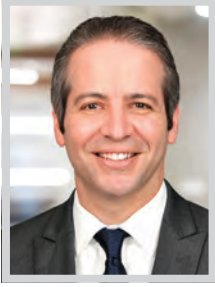
A seasoned litigator and employment attorney, Samuel handles federal and state litigation across the US.



MISTY SANFORD
Partner; Chair, Real Estate – West Coast
Willkie Farr & Gallagher

Misty Sanford is the chair of West Coast real estate in Willkie’s Los Angeles office. Her sophisticated and broad-based real estate transactional practice involves all aspects of real estate, with an emphasis on complex mixed-use developments, loan workouts, public/private partnerships (PPPs), real estate financing, purchase and sale, joint ventures, environmental issues, land use, leasing and reciprocal easement agreements, which allows her to assist with the full lifecycle of real estate assets.

Sanford’s work includes representation of some of the world’s leading institutional investors, private equity firms, developers, multinational corporations, REITs, foundations, nonprofits and individual entrepreneurs. Clients turn to Sanford with their most complex transactions.



TODD SCHERWIN
Regional Managing Partner
Fisher Phillips

Fisher Phillips’ regional managing partner Todd Scherwin is a powerful and effective advocate for Los Angeles-area business clients facing thorny employment issues and perilous lawsuits. One of California’s premier labor and employment attorneys, Scherwin’s track record victories for employers and sitting at the counsel table before the US Supreme Court. He has also led the firm’s burgeoning Los Angeles office since 2013, opened a Woodland Hills office in 2020, and founded the firm’s Sports Industry Team of which he is co-chair.

Scherwin is responsible for the firm’s strategic growth and direction, including recruiting and developing its attorneys and directing client service programs. Over the past decade, he has strategically grown the office from five total attorneys to more than 70 today.

Congratulations to our partners **Elizabeth Camacho** and **Gabrielle Vidal**, and all of our friends recognized on the *Los Angeles Business Journal’s* 2025 Top 100 Lawyers list.

We commend your outstanding professional accomplishments, dedication to your clients and the firm, and commitment to serving your community and beyond.

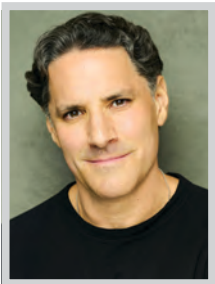




SHARDÉ SKAHAN
Partner
Seyfarth Shaw LLP

Shardé Skahan is a partner in Seyfarth Shaw's noted labor & employment department, which relies on her for counseling and handling major matters concerning employment litigation. A trusted advisor, Skahan develops client-specific strategies for her cases. Her summary judgment wins have included successes for a Fortune 500 technology company, a Fortune 500 national retailer, and a health care corporation on claims involving discrimination, harassment and retaliation.

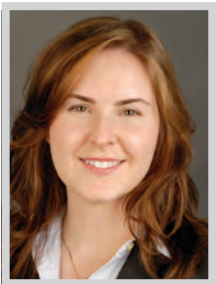
Skahan's leadership in the Southern California legal industry is further exemplified by her position as president of the Black Women Lawyers of Los Angeles (BWL). Through Skahan's leadership, BWL plays a very important role in addressing the needs and concerns of African-American women in the legal profession, helping to shape future generations.



JEFFREY SKLAR
Founding Partner
Sklar Kirsh LLP

Jeffrey Sklar is a co-chairman of Sklar Kirsh LLP, the chair of the firm's corporate department, and a member of its management committee. His clients range from individuals and early-stage companies to large corporations. Sklar advises clients in a variety of industries including advertising, alternative energy, apparel, consumer products, entertainment and media, manufacturing, medical devices, restaurants/hospitality, social media and technology. His principal areas of practice are corporate law, mergers and acquisitions, joint ventures, partner dispute resolution and executive compensation.

Sklar serves on the advisory board for the Transactional Lawyering Institute of Loyola Law School as well as the Board of Directors for Friends of the Israel Defense Forces Western Region, de Toledo High School and Stephen S. Wise Temple.



LAURA STOLL
Partner
Goodwin Procter LLP

Laura Stoll has overcome a myriad of obstacles to become a trailblazing leader at the forefront of Goodwin Procter's rapid West Coast expansion. The first female equity partner in the Goodwin Los Angeles office (of which she is also serves as chair), Stoll serves as the head of the firm's Southern California litigation practice.

Stoll specializes in complex business litigation, class action defense, and representing companies in government investigations and enforcement actions. She has represented leading financial services institutions, including FinTech companies, and represents private equity and portfolio companies, real estate companies, manufacturers and pharmaceutical companies. Additionally, Stoll currently mentors nearly 50 ascending female lawyers located in the Los Angeles area and across the country.



CHRISTOPHER TAYBACK
Partner
Quinn Emanuel Urquhart & Sullivan, LLP

Christopher Tayback is an esteemed and trusted leader within Quinn Emanuel Urquhart & Sullivan and serves as co-managing partner of the firm's Los Angeles office. Tayback's experience as a trial lawyer covers antitrust, bankruptcy, consumer class actions, criminal defense, defamation, employment matters, environmental cases, fraud, patent and intellectual property litigation, qui tam and real estate.

In the past several years, Tayback obtained a \$120 million jury verdict in an oil field property dispute on behalf of a small family owned company against Chevron; won a defense verdict in a breach of contract arbitration against a fast fashion company; and obtained a published opinion from the California Court of Appeal affirming the Academy of Motion Picture Arts and Sciences' famous "winners agreement."

WILLKIE CONGRATULATES OUR PARTNERS

Misty Sanford and Alex Weingarten



Los Angeles Business Journal's
Top 100 Lawyers 2025

WILLKIE

1,200 LAWYERS | 15 OFFICES | 6 COUNTRIES

Attorney Advertisement

Leading the Way

King & Spalding congratulates our partner, **David Willingham**, for being named one of *Los Angeles Business Journal's* "Top 100 Lawyers."



David Willingham
Partner

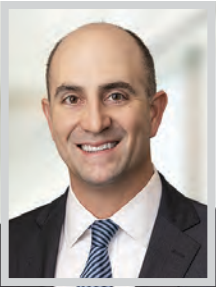
kslaw.com



VIVIAN L. THOREEN
Executive Partner
Holland & Knight

Vivian L. Thoreen is a highly accomplished attorney whose career has been defined by her ability to guide clients through some of life’s most challenging moments, including matters related to disease, divorce and death. Thoreen represents individuals, families, charities and financial institutions in complex disputes involving will and trust challenges, contested conservatorships, breach of fiduciary duty and elder abuse.

As executive partner of Holland & Knight’s Los Angeles office, Thoreen has played a pivotal role in the firm’s expansion from one to three offices in Southern California. Her leadership has fostered a collaborative and supportive environment that empowers colleagues and drives the success of the firm’s national Private Wealth Services Dispute Resolution Team.



TONY TOOTELL
Partner
Foley & Lardner LLP

Tony Tootell is a partner at Foley & Lardner LLP, specializing in energy litigation with a focus on renewable and alternative energy dispute resolution. He represents clients in both federal and state courts across the United States, as well as in national and international arbitration forums. As a member of the firm’s Energy Litigation Practice Group and energy sector, Tootell handles complex disputes involving contract and business tort claims, construction and manufacturing issues, real estate, regulatory, and tariff matters.

Tootell advises domestic and international renewable energy clients on various issues. Notably, he has managed numerous utility-scale solar project disputes concerning engineering, procurement and construction agreements, addressing challenges such as performance, delays, liquidated damages, change orders, permitting, and force majeure events.



VIOLA TREBICKA
Partner
Quinn Emanuel Urquhart & Sullivan, LLP

Viola Trebicka is a partner in the Quinn Emanuel Urquhart & Sullivan Los Angeles and New York offices and the co-chair of the firm’s data privacy and security practice. She maintains a diverse complex commercial litigation and trial practice, with particular emphasis on data privacy and security matters, antitrust litigation, intellectual property disputes and class actions.

When Trebicka became partner in 2019, the firm’s data privacy and security practice was non-existent – now it has grown to one of the most prestigious and sought-after in the US. In the last two years, Trebicka and her teams defeated multi-million and multi-billion-dollar class actions at the motion to dismiss, class certification and summary judgment stages by employing creative, precedent-setting strategies.



DANA TREISTER
Partner
Seyfarth Shaw LLP

As managing partner for Seyfarth Shaw’s Downtown Los Angeles office, Dana Treister is a leader both in the LA legal industry and the regional real estate industry, where he focuses his practice. Under his leadership, the LA office has more than doubled in size since its opening in 2009.

Treister has handled some of the most complex real estate transactions for a variety of institutional and fund clients. He leads real estate transactions across all 50 states, with an emphasis on the acquisition and sale of commercial properties, real estate finance, land use and entitlement work, and complex ground lease transactions. Clients entrust him with a variety of development projects, ranging from historic rehabs to ground-up construction, especially in the hospitality area.

Glaser Weil

CONGRATULATIONS TO ALL THOSE RECOGNIZED
AMONG LOS ANGELES BUSINESS JOURNAL'S

2025 Top 100
Lawyers

A special congratulations to Glaser Weil's
Kerry Garvis Wright and Patricia Glaser!

Kerry Garvis Wright
PARTNER AND CHAIR OF THE
EMPLOYMENT PRACTICE

Patricia Glaser
PARTNER AND CHAIR OF THE
LITIGATION DEPARTMENT

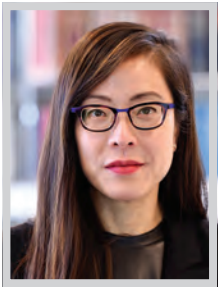
glaserweil.com

Century City | Newport Beach | San Diego | San Francisco

THOMPSON
COBURN LLP

TOTAL COMMITMENT®
thompsoncoburn.com

CONGRATULATIONS to
JENNIFER POST
for being selected among the
Top 100 Lawyers in Los Angeles!



KATE TUMA

Partner; Co-Lead, Global and US Automotive & Transportation Group
Squire Patton Boggs (US) LLP

Kate Eun Zu Tuma is a partner in the Squire Patton Boggs' Global Corporate practice in Los Angeles, providing comprehensive legal services spanning all aspects of complex local, cross-border and multi-jurisdictional corporate transactions and matters.

Tuma co-leads the firm's Global and US Automotive & Transportation Group and is one of the only female minority leaders in this role at a large international law firm. She is a trusted advisor to some of the largest car companies in the world, and she regularly advises corporate strategy teams on navigating regulatory compliance, policy, and geopolitical issues affecting the automotive industry. Tuma was an associate and partner in the firm's Tokyo and Seoul offices from 2008 to 2017.



ZACHARY TURKE

Co-Head, Mergers & Acquisitions; Corporate Partner
Sheppard Mullin

Zachary Turke is a corporate partner in Sheppard Mullin's Los Angeles office, where he serves as co-head of the Mergers & Acquisitions Department, the firm's largest practice group (with approximately 230 lawyers), and co-head of the Aerospace, Defense & Governmental Services Industry Team.

Throughout his 18 years with the firm, Turke has closed over 250 middle market M&A transactions across a variety of industries, including aerospace & defense, manufacturing, software & technology, business services and food & beverage. His clients include private equity firms and entrepreneurs in the LA area and across the country. He was recently elected to the Board of Directors of the Association of Corporate Growth, and for ten years served on the Board of Directors of LA-based charity, Partners for Potential.



GABRIELLE VIDAL

Chair, Guardianships;
Co-Chair, Trust & Estate Litigation
Loeb & Loeb

While Gabrielle Vidal is known for her success at trial in high-profile private wealth disputes, clients often turn to her to help navigate psychology and interpersonal dynamics at issue in complex and nuanced private wealth matters. This unique approach has made her a go-to lawyer in the guardianship space.

As co-chair of Loeb & Loeb's Trust and Estate Litigation practice, Vidal focusses on high-net-worth trust, probate, conservatorship and guardianship litigation. Recently, she represented rock legend Robbie Robertson's widow, Janet Zuccarini, against claims filed by his children to challenge Zuccarini's contractual rights under a prenuptial agreement and tenants in common agreement.



PERRIE WEINER

Partner in Charge, Los Angeles Office;
Chair, North America Securities Litigation Group
Baker McKenzie

Perrie Weiner is the partner in charge of Baker McKenzie's Los Angeles office, and chair of the firm's North America Securities Litigation Group. He joined the firm just over five years ago — when there were only four lawyers in the LA office — and was tasked with leading, growing and diversifying it. He also led the securities litigation practice group in North America.

Weiner's practice focuses on securities litigation, SEC enforcement matters and high stakes business litigation. He advises private equity funds, including hedge funds, broker-dealers, underwriters, placement agents and issuers in SEC and FINRA enforcement proceedings, and in white collar criminal proceedings. He also defends both underwriters and issuers in securities class actions, shareholder derivative actions, and takeover defense litigation.

HEALTH | SCIENCE | TECHNOLOGY

Critical in a crisis, creative in court®

SHB.COM

Shook congratulates our partner and friend



Michael Mallow

for being named to the LA Business Journal's Top 100 Lawyers 2025.

SHOOK

HARDY & BACON

ATLANTA | BOSTON | CHICAGO | DENVER | HARTFORD | HOUSTON | JERSEY CITY
KANSAS CITY | LOS ANGELES | MIAMI | NEW YORK | ORANGE COUNTY | PHILADELPHIA
SAN FRANCISCO | SEATTLE | ST. LOUIS | TAMPA | WASHINGTON, D.C.

THE CHOICE OF A LAWYER IS AN IMPORTANT DECISION AND SHOULD NOT BE BASED SOLELY UPON ADVERTISEMENTS.

Cox Castle congratulates

Andrew Fogg

on his selection as one of the Los Angeles Business Journal's

2025 Top 100 Lawyers!

 COX CASTLE

Expertise from the Ground Up

www.coxcastle.com

Los Angeles | Orange County | San Francisco



ALEX WEINGARTEN

Chair, Entertainment Litigation;
Managing Partner, Los Angeles Office
Willkie Farr & Gallagher LLP

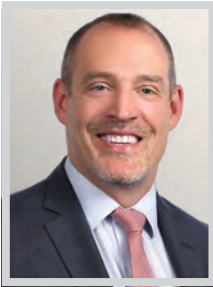
Alex Weingarten serves as managing partner of Willkie Farr & Gallagher’s Los Angeles office and chair of the firm’s entertainment litigation practice. He is a leading commercial trial lawyer who represents clients in all facets of entertainment, probate and business litigation. Weingarten spearheaded the launch of the firm’s Los Angeles office in 2021 and co-led its impressive growth from just three attorneys to over 100 today. Under his leadership, the office has attracted top-tier talent, including Doug Emhoff, former Second Gentleman of the United States, marking his return to private practice. In 2024, under Weingarten’s leadership, the firm partnered with Vista Del Mar Child and Family Services to help establish a new substance abuse disorder treatment center for children ages 12-17.



BART H. WILLIAMS

Partner; Los Angeles Office Head;
Global Chair of Litigation Department
Proskauer Rose LLP

When the stakes are high and reputations are on the line, several of the world’s leading organizations rely on Bart Williams to deliver a win. A renowned trial lawyer, Williams is chair of Proskauer Rose’s Litigation Department and head of its Los Angeles office. He has a wealth of experience across commercial litigation, white collar criminal defense and internal corporate investigations. Williams’ legal prowess has made him the trusted trial counsel for numerous Fortune 500 companies in high stakes, high-profile matters. His recent success on behalf of Gilead was highly publicized after he jumped into the \$3.6 billion antitrust trial – when the company’s lead counsel retired just three months prior to trial – and delivered a total defense verdict.



DAVID WILLINGHAM

Partner
King & Spalding

David Willingham is a seasoned litigator with a focus on white-collar criminal defense, government investigations and complex litigation matters in a variety of both high profile and highly confidential matters. Willingham is a former federal prosecutor in California and has a long history of successful representations in white-collar criminal matters. He recently achieved an impressive result after a 6-year litigation odyssey against the New York Attorney General and the Consumer Financial Protection Bureau for RD Legal Funding and its CEO. Willingham previously served as the president of the Federal Bar Association of Los Angeles, and the co-chair of the Lawyer Representatives for the Ninth Circuit Judicial Conference. He also served as an assistant US attorney for the Central District of California.



KERRY GARVIS WRIGHT

Partner; Chair of the Employment Practice
Glaser Weil

Litigation partner, trial attorney and chair of Glaser Weil’s Employment practice, Kerry Garvis Wright is widely recognized for her experience and caliber of service. Since launching the firm’s employment practice, she has been consistently named one of the top employment lawyers in California, with a portfolio of clients including household names in the entertainment elite. In 2024, she led the employment group to earn a Chambers practice ranking. In addition to her litigation practice, Wright has led noteworthy workplace investigations involving highly sensitive allegations, including sexual harassment and other workplace misconduct. Since the watershed #MeToo movement was sparked, she has handled claims by and against some of the most significant names in the entertainment, private equity and tech industries.

DENTONS

Congratulations to Dentons Partner Tania Moyron for being named a “Top 100 Lawyer” by the Los Angeles Business Journal

dentons.com

© 2025 Dentons. Dentons is a global legal practice providing client services worldwide through its member firms and affiliates. Please see dentons.com for Legal Notices.

SKLAR KIRSH

Congratulates Co-Chairman and Co-Founder Jeff Sklar

for being recognized as one of the Top 100 Lawyers of 2025 by Los Angeles Business Journal

1880 Century Park East, Ste 300
Los Angeles, CA 90067
310.845.6416
jsklar@sklarkirsh.com
www.sklarkirsh.com

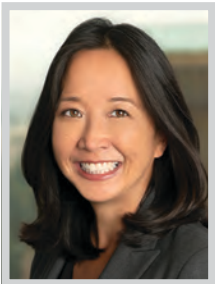
SKLAR KIRSH



JACK YEH
Partner
Sidley Austin LLP

A longtime leader at Sidley Austin and in the California legal community, Jack Yeh is called upon by clients to help them navigate challenging and enterprise-threatening conflicts. He is a seasoned trial lawyer and litigation strategist who leads experienced trial teams in complex commercial disputes, regularly representing both publicly traded companies and emerging businesses in a wide range of industries, including energy, oil and gas, real estate, media and entertainment, sports and apparel, advertising and technology.

Yeh also has deep experience representing clients in government-regulated industries and is a go-to trial lawyer for disputes involving unfair competition, environmental issues, governmental regulations, the California Environmental Quality Act, and public contracting.



STEPHANIE YONEKURA
Partner and Global Head of Investigations, White Collar, and Fraud
Hogan Lovells

Stephanie Yonekura is the global head of Hogan Lovells’ Investigations, White Collar, and Fraud practice, which is comprised of more than 150 lawyers across 20 jurisdictions globally. Having served as a federal prosecutor for over 14 years, Yonekura has specialized knowledge of the hot-button issues that are considered in every stage of any government investigation.

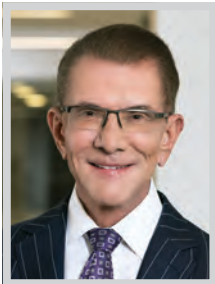
Yonekura was previously acting US Attorney in the US Attorney’s Office for the Central District of California. Under her leadership, the office investigated the hacking of one of the world’s largest entertainment companies, reportedly by a foreign government. As the Acting US Attorney, Yonekura was an active participant in the larger DOJ community.



THOMAS YOO
Partner
Polsinelli

Thomas Yoo is a litigation attorney and chair of Polsinelli national Products Liability Life Sciences practice group. Yoo’s practice includes a variety of product liability matters and commercial disputes. He serves as national, regional and trial counsel on behalf of leading companies in numerous industries, including life sciences, manufacturing, financial services, real estate, transportation and private investment ventures.

Yoo is regularly involved in some of the largest and highest profile mass tort litigations in the country involving consumer health and safety issues, including appointments to defense leadership roles in federal multidistrict litigations (MDL) and statewide coordinated proceedings such as Vioxx, NuvaRing and Zantac. He handles a wide range of complex cases, negotiations and exposures.



JAMES YUKEVICH
Partner
Yukevich | Cavanaugh

Trial lawyer James Yukevich is frequently consulted by the general counsel of Fortune 100 companies in areas involving liability issues, damages, proposed recalls and public relations issues. Since the end of the pandemic, he has taken to trial and resolved over 20 high-exposure cases involving companies such as Lenovo, Tesla, Uber, CVS Health, Jaguar/Land Rover, Skanska, among others.

Yukevich founded his law firm with a clear focus on providing a special level of highly personalized expertise to each individual client as well as outstanding results in civil litigation defense. This past year, he has secured major victories in several high-profile cases, including successfully defending American Honda Motor Corporation Inc. in Gardner v. Honda Motor Co., a precedent-setting case in which the plaintiffs demanded \$32.5 million.

Congratulations!



Gabriel Green
SHAREHOLDER

SELECTED AS A
2025 TOP 100 LAWYER
BY THE LOS ANGELES BUSINESS JOURNAL

Buchalter
www.buchalter.com

AZ | CA | CO | GA | IL | OR | TN | UT | WA

Los Angeles Business Journal’s 2025 Top 100 Lawyers

“My practice centers on high-stakes, complex transactions where strategy & execution drive success.”

Chris Manderson
Partner
Chair of the Corporate Department



ERVIN COHEN & JESSUP LLP

www.ecjlaw.com 310.273.6333



LEGAL EXCELLENCE HONOREE

SKIP MILLER

Partner
Miller Barondess, LLP

Skip Miller is an experienced and prominent trial lawyer. He is also renowned for his strategic counsel in major litigation. Miller has served as lead trial counsel in more than a hundred state and federal cases, representing private and public corporations, Fortune 500 companies, individual clients including entertainers and governmental entities.

Miller defended a client in a complex criminal conspiracy and securities fraud trial in the Southern District of California. After a hung jury (10-2 for acquittal), he secured a full dismissal of charges in December 2024. As counsel for the trustee of the Woodbridge Liquidation Trust, Miller resolved a \$1.3 billion Ponzi scheme case against multiple professionals for aiding and abetting the scheme. Through mediations, he secured substantial confidential settlements before discovery, saving significant expense. Miller also defended a \$240 million breach of a non-compete covenant claim involving a \$1.3 billion architectural hardware company sale. After multiple motions, the parties reached a confidential settlement for a small fraction of the claim.

Miller also handles significant matters for the County of Los Angeles, including federal court litigation involving homelessness and in connection with the recent devastating fires in the LA area. He also represented the County in litigation against SoCalGas over the Aliso Canyon gas leak, the largest natural gas leak in our country’s history, securing a \$119.5 million settlement. He also defended the City of Inglewood and Mayor James Butts, Jr. against Madison Square Garden’s attempts to block construction of the new LA Clippers arena, the Intuit Dome, adjacent to SoFi Stadium.



ForensisGroup®
THE EXPERT OF EXPERTS®

Trusted by more than 20,000 clients.
Hired in over 30,000 cases.
No-cost recruiting and consultations.

Nothing but the Truth®

(800) 555-5422 ForensisGroup.com



CHAMPION OF MENTORSHIP HONOREE

KEITH GREGORY

Partner
Snell & Wilmer L.L.P.

Keith Gregory is a partner and leader at Snell & Wilmer, a full-service business law firm. He serves as chair of the commercial litigation group in Los Angeles, co-chair of the commercial litigation group in California and as a member of the firm’s Ethics Committee. Gregory practices in the areas of general business matters, corporate, franchise and partnership disputes, and intellectual property and commercial litigation. He is an experienced litigator, with considerable background in litigating government debarment proceedings, intellectual property issues, licensing agreements, trade secret matters and Uniform Commercial Code issues.

Gregory demonstrates how his values are aligned with Snell & Wilmer’s commitment to do its best to understand and appreciate the unique journeys that its attorneys take before joining the firm or entering the legal profession through his leadership as co-chair of Snell & Wilmer’s First-Gen Forward program. This program endeavors to provide first-generation attorneys, some of whom are the first in their families to achieve a college degree and/or come from low-income or disadvantaged backgrounds, with additional resources to assist them in achieving professional growth and success at the firm.

Additionally, Gregory serves as a mentor providing relevant guidance and advice to both junior attorneys as well as his colleagues. He has been selected as a member of the firm’s COACH Award and Hall of Fame Mentor Award for his dedication and efforts to support and develop lawyers through mentorship, professional development opportunities and access resources and trainings designed to promote and advance first-generation professionals.

Employment law. It’s sticky.
Don’t get trapped.



LightGabler
congratulates our
founding partner,
Jonathan Fraser Light,
for being a
2025 Top 100 Lawyer.

LightGabler^{LLP}
We Make Business Work[®]

Innovative | Experienced | Responsive

EMPLOYMENT COUNSEL & LITIGATION | INTELLECTUAL PROPERTY
info@lightgablerlaw.com | LightGablerLaw.com | 805.248.7208



Scan code to
learn more
about Kristina.



Congratulations to our partner **Kristina Royce**
for being recognized as a **“Top 100 Lawyer”**
by the *Los Angeles Business Journal*.

Blank Rome is an Am Law 100 firm with 16 offices and more than 750 attorneys and principals who provide a full range of legal and advocacy services to clients operating in the United States and around the world.

BLANKROME

Boston • Chicago • Cincinnati • Dallas • Fort Lauderdale • Houston
Los Angeles • New York • Orange County • Philadelphia • Pittsburgh
Princeton • Shanghai • Tampa • Washington • Wilmington



COMMUNITY IMPACT HONOREE

STEPHEN J. HENNING

Founding Partner
Wood Smith Henning & Berman, LLP

Stephen Henning is undoubtedly one of the most influential lawyers in Los Angeles. As the co-founder of Wood Smith Henning & Berman, his impact on the field of law and the greater Los Angeles community cannot be overstated. A versatile lawyer, Henning is regularly retained to handle all facets of construction, real estate, employment and business litigation. His clients include Fortune 500 companies and prominent figures in the business community, some of the largest residential and commercial public and private owners, homebuilders, developers, investors, contractors and lenders.

Beyond his day job, Henning’s impact on non-profit organizations reflects a deep commitment to community service and leadership. Serving as chairman of the Board for the March of Dimes, he played a pivotal role in recruiting members, securing sponsors and overseeing fundraising efforts. His three-year chairmanship of one of the March of Dime’s largest fundraiser, consistently ranked in the nation’s top ten, exemplifies his dedication.

Henning was also involved as a board member of the Alzheimer’s Association Southern California Chapter. His tenure on the board and co-chairmanship of the Development Committee facilitated local grants and support for caregivers dealing with Alzheimer’s challenges. He has also been a board member at LevittQuinn, a public aid family law firm, for over two decades. This organization delivers legal services to Los Angeles residents truly in need at the most vulnerable time in their lives. A champion of WSHB’s charitable philosophy, Henning supports various non-profits, including Big Sunday, Meals on Wheels West and the Pediatric Cancer Research Foundation.

NOMINATE TODAY!



LOS ANGELES BUSINESS JOURNAL
CORPORATE
COUNSEL
AWARDS 2025

The Los Angeles Business Journal will honor the accomplishments and significant roles that In-House Counsel play in the success of a business enterprise. This event will recognize the achievements of industry-leading Corporate Counsels and their ongoing efforts to support our Community of Business™.

NOMINATION DEADLINE
FRIDAY, AUGUST 15

To nominate, visit labusinessjournal.com/events/cca2025



CHAMPION OF DIVERSITY HONOREE

SHARDÉ SKAHAN

Partner
Seyfarth Shaw LLP

Shardé Skahan has become one of the true leaders in the legal industry in Southern California, exemplified by her position as president of the Black Women Lawyers of Los Angeles (BWL). Through her leadership, BWL plays a key role in addressing the needs and concerns of African-American women in the legal profession, helping to shape future generations. This leadership role grew out of the outstanding reputation Skahan has earned from clients and colleagues at Seyfarth Shaw, where she is a partner in the firm’s noted Labor & Employment department.

The firm relies on Skahan for counseling and to handle major matters concerning employment litigation. Skahan’s clients view her as a trusted advisor and staunch advocate who approaches her work and relationships with them by developing client-specific strategies for her cases.

That thorough and thoughtful approach has enabled Skahan to win numerous motions for summary judgment on behalf of her clients and successfully negotiate resolution of complex cases for employers ranging from food and beverage companies to national retailers to California’s public agencies.

Alongside her critical client work, Skahan gives back – and pays forward – to the legal profession through her work with BWL. She has been responsible for all of the organization’s programming, which has included panels discussing issues facing women in employment, the current state of the criminal legal system, leadership with Black women bar leaders, and the history of BWL. She also dedicates her time to mentoring young lawyers and advancing and supporting the interests of Black women lawyers and the Black legal community in Los Angeles.

Pivotal Technology Partnership
Impacting the Legal Field

California Lawyers Association (CLA), the state’s largest volunteer Bar Association with 45,000 members, announced today it has partnered with Electronic Discover Reference Model (EDRM), the internationally recognized e-discovery global best practices leader. This elite group of attorneys, technical experts, AI industry leaders, universities, and others, will improve e-discovery, privacy, security and information governance for California’s justice system and legal profession.

“This is a forward looking partnership for California and the practice of law,” said Chris Nguyen, CEO, California Lawyers Association. “It is imperative that all attorneys have the most relevant knowledge and a practical understanding about issues surrounding technology and how it effects their clients and practices.”

Privacy, security and AI-enabled e-discovery technology and services will play a central role in organizations as they strive to keep their data secure. Robust e-discovery technology, supported by expertise and services, helps organizations respond to litigation, compliance and investigation demands. In the era of hybrid and remote work at scale, organizations need to securely manage information, protect confidential and privileged access, and collaborate effectively to be efficient and productive and adhere to the increasingly complex demands of security and data privacy frameworks. The ability to have trusted relationships with organizations like CLA in the legal environment is mission-critical.

EDRM is a leader in the areas of Artificial



Intelligence, e-discovery, privacy and how everything from data collection to social media may impact fair and equitable access to justice. While these issues have received national attention recently, the organization was established 20 years ago to better educate lawyers and strengthen best practices around the world.

“California attorneys, located in the epicenter of the technical world, face novel and cutting-edge issues as they navigate the bread and butter of e-discovery practice,” explained Mary Mack, CEO and chief legal technologist for EDRM. “We are thrilled by the opportunity to

learn from California Lawyers Association and to share our best practices with them.”

Shannon Bales, CLA chair, Law Practice Management and Technology Section, oversees CLA’s educational component surrounding such things as the latest innovations in law practice management and ethical concerns related to technology. “California Lawyers Association holds its principles of diversity, transparency, and fairness in the administration of justice as its mission. Our new partnership will ensure that our members are up-to-date on current trends, processes and influences.”

‘It is imperative that all attorneys have the most relevant knowledge and a practical understanding about issues surrounding technology and how it effects their clients and practices.’

CHRIS NGUYEN
California Lawyers Association

CLA’s members will now have EDRM’s connections to in-person events, webinars, video programing, podcasts and other tools available to them from around the country and the world. This helps make certain that lawyers and other legal professionals receive the most recent and accurate information regarding complex legal matters associated with generative AI, data mapping, electronic records review and a host of technology driven issues, as well as their benefits.

CLA members include state and nationally recognized judges, attorneys and legal experts.

More information about California Lawyers Association is available at callawyers.org.



ATTORNEY TO WATCH HONOREE

STEPHANIE HURST

Partner
Mayer Brown

Stephanie Hurst has played a key role in the expansion of Mayer Brown’s M&A practice, client roster as well as increasing the diversity of the Los Angeles office. She has worked on dozens of innovative and complex deals involving multiple jurisdictions and in evolving and emerging areas including tech and Environmental, Social and Governance. She is also working with VC firms on their investments in diverse and underrepresented businesses as well as family offices identifying potential investment opportunities in start-ups located in key venture capital and growth spaces in California, including “Silicon Beach,” and Silicon Valley.

Hurst is passionate about pro bono work, having logged more than 1,700 hours since she started at the firm in 2011. Her most recent project involves helping minority women entrepreneurs achieve ESG certification (formerly known as becoming a “certified B Corp”) through a partnership with B LAB US & Canada’s “Level” program, which was created to promote inclusion and support of businesses facing “systemic challenges to economic empowerment.” B Lab is the nonprofit organization that certifies businesses as B Corps based on its “B Impact Assessment,” of businesses’ social and environmental performance, public transparency and legal accountability.

Hurst is also on the firm’s Los Angeles office’s hiring committee and plays a pivotal role in summer associate recruiting. She was instrumental in increasing the diversity of the Los Angeles office, which is now considered one of the firm’s most diverse offices. She is on the firm’s Women’s Committee and Project Equity, which was launched in 2020 to fight systemic racism and promote racial equity.

Guidance on Solicitation Limits after LA Fires is Now Available

California Attorney General Rob Bonta has released information for the public and attorneys about California attorneys’ ethical obligations after a natural disaster, like the Los Angeles fires this year.

Attorneys with questions or concerns about these obligations have been encouraged to review California’s Rules of Professional Conduct (7.1-7.3) on communications concerning a lawyer’s services, advertising and solicitation.

“As the Attorney General serving Californians, I know the great honor and privilege that working in the legal field can bring. With that great privilege, also comes great responsibility,” said Bonta. “I encourage attorneys practicing in California to familiarize themselves with laws governing client solicitation after a natural disaster or catastrophe. Given the great collective damage of the Los Angeles fires, attorneys should ensure they are practicing ethically and in compliance with the law.”

The State Bar of California has also warned the public to watch out for and report potential fraud by lawyers.

“The State Bar thanks Attorney General Bonta for his leadership in protecting Californians impacted by the wildfires,” said Chief Trial Counsel George Cardona. “During times of crisis, individuals and families are particularly vulnerable. It is critical that attorneys follow the rules regarding solicitation and advertising. We urge the public to take their time when seeking legal help, avoid rushing into agreements, and immediately report any suspected misconduct by attorneys.”

The public and attorneys should know that California law prohibits lawyers or their representatives from:

- Soliciting clients in person or by telephone calls or other real-time electronic contact;
- Soliciting clients who have made known to the lawyer a desire not to be solicited or if the transmission of the solicitation involves

tisement at the beginning and end of any such communications.

Before hiring an attorney, Californians should check the State Bar website for the status of an attorney’s license to practice law and whether they have any record of discipline.

The legal processes for a disaster of this magnitude often will take place over many

possible for them and their families.

For more information, attorneys with questions about their obligations regarding advertising and solicitation, or other ethical obligations, should contact the State Bar of California’s free and confidential Ethics Hotline: 800-2-ETHICS or 800-238-4427 or visit the Ethics webpage, where attorneys can also submit their questions via an online form.

‘I encourage attorneys practicing in California to familiarize themselves with laws governing client solicitation after a natural disaster or catastrophe. Given the great collective damage of the Los Angeles fires, attorneys should ensure they are practicing ethically and in compliance with the law.’

ROB BONTA
California Attorney General

intrusion, coercion, duress or harassment;

- Mailing written communications offering legal representation unless the communication is clearly labeled as an advertisement on the outside of the envelope; and
- Sending recorded or electronic communications offering legal representation unless the communication is clearly labeled as an advertisement at the beginning and end of any such communications.

Before hiring an attorney, Californians should check the State Bar website for the status of an attorney’s license to practice law and whether they have any record of discipline.

The legal processes for a disaster of this magnitude often will take place over many

