



LOS ANGELES BUSINESS JOURNAL
HEALTH CARE
2025 **LEADERSHIP AWARDS**

**THE 2025
HONOREES
& FINALISTS**

PLATINUM SPONSORS



GOLD SPONSORS

Adventist Health Glendale | Adventist Health White Memorial | California Rehabilitation Institute
City of Hope | CO Architects | DPR Construction | EwingCole | Hospital Association of Southern California
IMA Financial Group | Keck Medicine of USC | PIH Health | Reveleer



HEALTH CARE LEADERSHIP AWARDS

EVENT RECAP

Health care leaders in our region have, in recent years, been asked to do get particularly creative while accomplishing countless essential tasks and helping pioneer innovative new technologies and treatment protocols. The leaders of this industry have had transformational decisions to make every day and we all owe them a debt of gratitude. The importance of the leaders and teams who are running health care organizations and making key decisions to help improve our communities cannot be overstated. This section of the Los Angeles Business Journal is designed to honor the particularly outstanding leaders in health care for our region. These individuals, organizations and programs have made remarkable strides helping Los Angeles (and beyond) to provide outstanding levels of care and treatment while fighting to help us navigate through uncharted waters and beyond. Included in this special section you are reading now are spotlights on the honorees we celebrated as part of our annual Health Care Leadership Symposium & Awards event on Wednesday, August 27th at the Biltmore

Los Angeles. Before launching into the virtual awards ceremony, the event brought together a diverse group of elite health industry insiders for a panel discussion about everything from providing to underserved populations to the biggest challenges the system is facing to the overall impact new protocols are having on Southern California, and much more. The discussion included insights from moderator **George Greene** (president/CEO, Hospital Association of Southern California); and panelists **Sameer Amin, MD** (chief medical officer, L.A. Care Health Plan); **Kavitha Bhatta, MD, MMM, FAAP, FACHE** (president and chair, Prime Healthcare Foundation and CMO, strategy, Prime Healthcare); **Gustavo Friederichsen** (CEO, Los Angeles County Medical Association); **Dorothy Seleski** (Medi-Cal president, Health Net); and **Johnese Spisso** (president, UCLA Health; CEO, UCLA Health System; associate vice chancellor, UCLA Health Sciences). During the award ceremony portion of the event, 13 inspirational honoree organizations and individuals were announced and are



described in this section. We applaud each of them, as well as the impactful collection of finalists, also described in these pages. A special thank you to our Platinum Sponsors: **Health Net, L.A. Care Health Plan, Los Angeles County Medical Association, Prime Healthcare and UCLA Health**, who helped make this event possible. Congratulations – and thank you – to all the great health care leaders in Los Angeles who play such an integral role in our lives and the lives of our families, friends and coworkers.

Our goal is to help patients reach theirs.



California
Rehabilitation
INSTITUTE
A Cedars/UCLA Health Partnership

To do that, we provide an exceptional rehabilitation experience by championing their progress, celebrating their success and working together to rebuild their lives with confidence.

Where a patient chooses to go for rehabilitation following a stroke, spinal cord injury, brain injury or other condition is the most important step toward their recovery.

2070 Century Park East
Los Angeles, CA 90067
californiarehabinstitute.com

CONGRATULATIONS

UCLA Health congratulates all honorees of the Los Angeles Business Journal Health Care Leadership Awards including:

WINNERS

UCLA Health

Top Hospital or Medical Center

David Geffen School of Medicine at UCLA

Educational or Institutional Program of the Year

UCLA Health/Keck Medicine of USC/One Legacy

Outstanding Collaboration

INDIVIDUAL AWARDS



HEALTH CARE EXECUTIVE OF THE YEAR **HONOREE**

KAVITHA BHATIA, MD, MMM, FAAP, FACHE

President and Chair, Prime Healthcare Foundation; CMO, Strategy, Prime Healthcare

Dr. Kavitha Bhatia is president and chair of the Prime Healthcare Foundation, a 501(c)(3) not-for-profit public charity dedicated to improving healthcare through its hospitals, education and charitable initiatives. She also serves as chief medical officer of strategy for Prime Healthcare, a nationally recognized health system with 51 hospitals and more than 360 outpatient locations across 14 states.

Eighteen of Prime Healthcare’s hospitals are part of the not-for-profit Prime Healthcare Foundation, which supports the delivery of high-quality care and community service across the country. The Foundation, under Dr. Bhatia’s stewardship, holds more than \$2 billion in assets and, together with Prime Healthcare, has provided over \$14 billion in charity and uncompensated care since 2010. It continues to support local and global efforts focused on advancing health equity and medical education.

In 2018, the Foundation contributed \$80 million to establish the California University of Science and Medicine, a private, non-profit medical school in Southern California dedicated to preparing future physicians committed to serving underserved communities.

As Prime Healthcare’s strategic lead, Dr. Bhatia works closely with system and hospital leadership to guide enterprise-wide initiatives that promote growth, operational excellence and community impact. Under her leadership, Prime has continued to achieve national recognition, including 72 “100 Top Hospitals,” awards and consistent rankings among the nation’s top health systems. Dr. Bhatia led Prime’s recognition in the Lown Institute Hospitals Index for Social Responsibility, where it ranked among the top ten health systems in the country for equity, value and outcomes.



SCOTT BRAUNSTEIN, MD FINALIST

*Chief Medical Officer
Sollis Health*

Dr. Scott Braunstein is the chief medical officer at Sollis Health, a concierge medicine provider offering 24/7 access to high-quality, ER-level care. In this role, Dr. Braunstein oversees care across Sollis’ 13 centers nationwide, serving more than 19,000 members in California, New York and Florida. He first joined the team in 2020, helping to launch the Sollis Beverly Hills Clinic that September. Since then, he has expanded Sollis’ reach in the state with the opening of clinics in Santa Monica, Manhattan Beach, San Francisco and Palo Alto.

Over the last 5+ years, Dr. Braunstein has assembled a leading team of top emergency physicians, advanced care providers, ER nurses, and radiology technicians who provide 24/7 care in person, virtually, and at home for more than 5,000 LA County residents.



SANTIAGO MUÑOZ III FINALIST

*Chief Strategy Officer
UCLA Health*

Santiago Muñoz has extensive experience in healthcare financing, health policy development and strategic positioning. As chief strategy officer for UCLA Health, Muñoz is responsible for clinical business development and growth, business transactions, industry partnerships and strategic initiatives to improve market position.

Muñoz has led transactions that have meaningfully increased the size, scale and breadth of UCLA Health to advance priorities such as expanding access to a comprehensive continuum of care and driving tertiary and quaternary business through collaborations and targeted expansions. His portfolio of work includes a diverse group of joint ventures, an organic strategic community growth plan, and a series of strategic partnerships. He played an integral role in the recent acquisition of the 260-bed West Hills Hospital and Medical Center, since renamed UCLA West Valley Medical Center.



SMITHA RAVIPUDI FINALIST

*CEO, USC Care; CEO, Keck Medicine’s
Ambulatory Care Services
Keck Medicine of USC*

Smitha Ravipudi, MPH, is chief executive officer of USC Care, Keck Medicine of USC’s network of nearly 1,400 physicians who provide outpatient services and procedures. She is also CEO of Keck Medicine’s ambulatory care services. In these roles, she is responsible for health system operations in regional outpatient locations, (which span across Kern, Los Angeles and Orange Counties and Las Vegas), hospital-based clinics, Keck School of Medicine of USC department clinics and outpatient joint-venture partnerships and community practices.

Ravipudi oversaw the following recent achievements in ambulatory care. Creation of the upcoming new 100,000 square-foot medical office complex in Pasadena that will serve the city and surrounding areas beginning in the fall of 2025. This is the largest stand-alone clinic in the health system.



JILL WELTON FINALIST

*Southern California Market President
Dignity Health Southern California*

Since Jill Welton, Southern California market president for Dignity Health, was promoted in April 2024, she now oversees six hospitals, including Dignity’s four care sites in Los Angeles County: California Hospital Medical Center in Downtown Los Angeles, Glendale Memorial Hospital and Health Center, Northridge Hospital Medical Center, and St. Mary Medical Center in Long Beach.

Previously, as CEO of Glendale Memorial since 2018, Welton spearheaded significant culture changes, improving employee engagement and patient experience. Her leadership resulted in the hospital achieving its first CMS Five-Star Quality Rating and a Leapfrog Hospital Safety Grade A. Welton’s strategic vision and dedication to quality outcomes have demonstrably enhanced healthcare delivery across Southern California. Her ability to turn vision into action ensures the highest standard of care for every patient.



Health Net is proud to be a sponsor of Los Angeles Business Journal's *2025 Health Care Leadership Awards.*

CONGRATULATIONS TO ALL THE OUTSTANDING AWARDEES
RECOGNIZED FOR THEIR LEADERSHIP AND IMPACT IN HEALTHCARE!

For more than 45 years, Health Net has been dedicated to transforming the health of our community, one person at a time. We provide for individuals, families, businesses and those that qualify for Medi-Cal and Medicare. **We're Health Net: Coverage for Every Stage of Life.**



Health Net expands access
and drives health equity.
Scan code to learn more.

INDIVIDUAL AWARDS



HOSPITAL CEO OR PRESIDENT OF THE YEAR **HONOREE**

MARTY SARGEANT

CEO
Keck Medical Center of USC

Marty Sargeant, MBA, was appointed CEO of Keck Medical Center of USC, comprised of Keck Hospital of USC and USC Norris Cancer Hospital, after serving as interim CEO. He provides executive leadership for Keck Hospital and USC Norris while maintaining strong relationships with department chairs, faculty, staff and leadership. He is committed to personally engaging with frontline caregivers and maintains a constant presence at the medical center, creating opportunities to enhance patient care and ensure that physicians and staff have the support they need to excel in their roles.

Sargeant has more than 20 years of health care leadership experience. Prior to his role as CEO, he served as chief operating officer for the medical center. In this position, he provided overall executive leadership, including quality of care, clinical operations, customer satisfaction, financial stewardship, physician relations and business growth.

Previous to his career in health care, Sargeant served for 10 years as an F-15 combat pilot in the United States Air Force, for which he received two medals of commendation and served as a flight instructor.

Sargeant has championed a mid-management leadership training based on open communication and trust, Brene Brown’s Daring Leadership program. The program has so far trained more than 50 C-suite and leaders. Due to this new program and other initiatives to improve the workforce experience, the medical center has lowered its nursing turnover to 7.1% versus the national average of almost 21%. Turnover rate of leaders at the medical center has fallen to the low rate of 8.7%.



SUNNY BHATIA, MD, MMM, FACHE, FACC, FSCAI

FINALIST
President & CMO
Prime Healthcare

Dr. Sunny Bhatia is the president and chief medical officer of Prime Healthcare and also serves as chief executive officer of Region I and Region VII, which includes hospitals and affiliated entities across California, Nevada and Illinois. He is a quadruple board-certified interventional cardiologist with certifications in Internal Medicine, Cardiovascular Disease, Nuclear Cardiology and Interventional Cardiology. Dr. Bhatia is a fellow of the American College of Cardiology, the Society for Cardiac Angiography and Interventions, and the American College of Healthcare Executives.

Under Dr. Bhatia’s leadership, Prime Healthcare hospitals have received national recognition for clinical excellence, patient safety, and quality improvement. As chief medical officer of a physician-founded, physician-led health system, Dr. Bhatia works to ensure alignment between hospital leadership and medical staff, focusing on high-quality, cost-effective care.



JOHN RAFFOUL

FINALIST
President
Adventist Health White Memorial

John Raffoul is the president of Adventist Health White Memorial, now boasting two sites. The Los Angeles site is an inner-city safety net medical center with a 353-bed acute care hospital, providing a full range of inpatient, outpatient, emergency and diagnostic services. Embracing the hospital’s legacy as a teaching hospital, Raffoul continues to pioneer physician and nurse residency programs, shaping the future of healthcare professionals. Raffoul’s leadership was also instrumental in acquiring Adventist Health White Memorial’s Montebello site in 2023, to expand the organization’s reach. This 192-bed hospital, established in 1949, is equipped with emergency services, wound care clinic and medical offices.

Raffoul began his career at White Memorial in 1984 as an accountant, working his way up through leadership positions to assume the role of president in 2015.



JOHNESE SPISSO

FINALIST
President, UCLA Health; CEO, UCLA Hospital System; Associate Vice Chancellor
UCLA Health

Johnese Spisso is a nationally recognized academic health care leader with over 40 years of experience. She was recruited to the position of president of UCLA Health, CEO of UCLA Hospital System and associate vice chancellor of UCLA Health Sciences in 2016. As CEO, she leads the UCLA Health System consisting of the UCLA Ronald Reagan Medical Center, UCLA Mattel Children’s Hospital, Resnick Neuropsychiatric Hospital at UCLA, UCLA Santa Monica Medical Center, UCLA West Valley Medical Center, and the expansive network of over 280 UCLA Health primary and specialty care clinics throughout Southern California, the UCLA Health Homeless Healthcare Collaborative and the UCLA Faculty Practice Group.

Spisso is responsible for all aspects of the health system and the regional outreach strategy in the local, state, national and international programs.



ROBERT STONE

FINALIST
CEO
City of Hope

Robert Stone is redefining what it means to lead a mission-driven, innovation-powered health organization. Since accepting the CEO role in 2014, he has guided City of Hope’s evolution from a single-site hospital in Duarte into one of the nation’s largest cancer research and treatment systems – now serving more than 160,000 patients annually across major metro areas and historically underserved communities.

Stone is addressing one of the most pressing challenges in medicine today: the growing gap between breakthrough science and patient access. Under his leadership, City of Hope has built a national network that delivers cutting-edge care in more places, including early access to clinical trials, advanced genomic testing and personalized treatments. The organization also launched AccessHope – a first-of-its-kind model that connects employers and health plans with subspecialty cancer expertise.

Leadership in Community

Prime Healthcare proudly thanks the Los Angeles Business Journal for recognizing excellence in leadership and community outreach.

Health Care Executive of the Year Honoree



Kavitha Bhatia,
MD, MMM, FAAP, FACHE

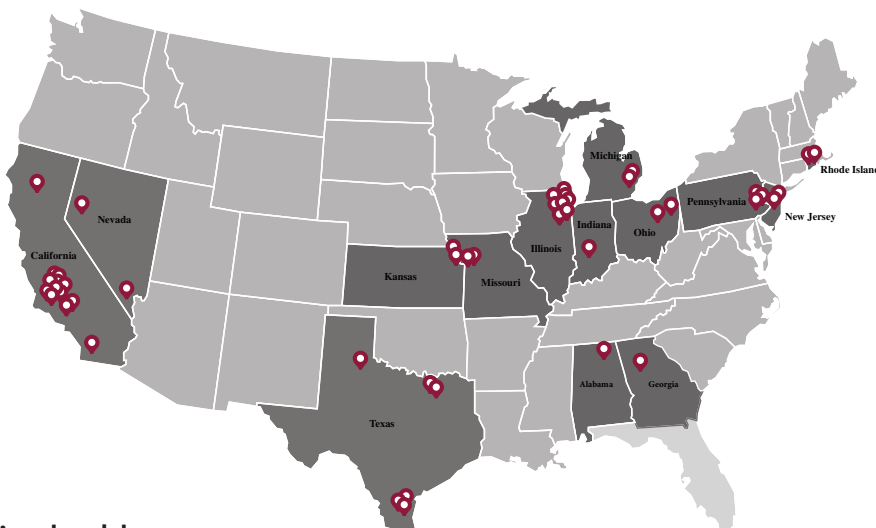
President and Chair, Prime Healthcare Foundation
& Chief Medical Officer of Strategy, Prime Healthcare

Outstanding Community Outreach Honoree



Prime Healthcare

Every award tells the story of a life touched by Prime Healthcare. Our award-winning care delivers better outcomes and brighter futures across the nation.



primehealthcare.com

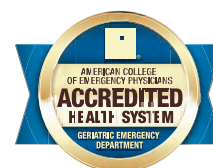


Prime Healthcare

Saving hospitals. Saving jobs. Saving lives.

TRUVEN HEALTH ANALYTICS

**15 TOP
HEALTH SYSTEMS**



Prime Healthcare by the Numbers

| | |
|---------|-------------------------------------|
| 51 | Hospitals saved |
| 14 | States with Prime hospitals |
| 18 | Not-for-profit hospitals |
| 2.5M | Patient visits annually |
| 600+ | Communities served |
| 57,000+ | Staff and affiliated physicians |
| 10,582 | Licensed beds |
| \$14B | Charitable contributions since 2010 |
| \$2.78B | Capital improvements since 2005 |

INDIVIDUAL AWARDS



HOSPITAL EXECUTIVE OF THE YEAR HONOREE

ANNETTE SY

Chief Nursing Executive
Keck Medical Center of USC

Annette Sy, DNP, RN, NE-BC, has served as the chief nursing executive for Keck Medical Center of USC, which includes Keck Hospital of USC and USC Norris Cancer Hospital, since 2012. In her position, she is responsible for all inpatient and outpatient nursing services, leading some 1,300 nurses. She plays a key role in ensuring survey readiness, clinical quality standards, patient experience and nursing competency in both inpatient areas of Keck Hospital and the cancer hospital, as well as outpatient care clinics.

Sy brings more than 30 years of nursing experience to USC, and is an advocate for safe, quality patient- and family-centered care. Sy has many accomplishments, including having led the nursing team at USC Keck Hospital to its first American Nurses Credentialing Center’s Magnet Recognition, considered the gold star of nursing excellence, awarded to hospitals possessing the highest level of care.

Sy developed and helped launch Keck Medicine’s new Nursing Institute, to promote education, leadership development, clinical expertise and research among nurses. The institute supports approximately 4,000 nurses across the health system’s four hospitals and more than 100 clinic locations to ensure nurses have access to the tools, education and training to provide exceptional patient care, facilitate collaboration and encourage career growth and leadership opportunities. She also created the hospital’s nursing professionalism program in partnership with a respected and evidence-based program, the Vanderbilt University Center for Patient and Professional Advocacy. This program provides education, research, data, tools and effective processes for promoting professional accountability throughout the United States and abroad.



JEREMY BLUMBERG, MD
FINALIST
Chief of Urology
Harbor UCLA Medical Center

Dr. Jeremy Blumberg’s peers report that “There are no words strong enough that would embody the impact Dr. Blumberg has in the field of medicine as it relates to anything urology.” Whether he is performing surgeries for kidney transplant patients or complicated kidney cancer surgeries he has earned the reputation for being a genuine leader.

Dr. Blumberg is also a professor and teaches at UCLA, is the Chief of Urology at Harbor UCLA Medical Center, and is well-known for doing it all with consistent compassion and grace. Dr. Blumberg received his MD from The George Washington School of Medicine. He completed his residency training at the Kaiser Permanente program in Los Angeles, followed by a two-year fellowship in Kidney Transplantation at UCLA.



RAMONA PRATT
FINALIST
Chief Nursing Officer, PIH Health Whittier Hospital
PIH Health

Ramona Pratt, MSN MSHCA RN, has served as chief nursing officer of PIH Health Whittier Hospital since 2019. In this position, she oversees all aspects of patient care operations, hospital growth initiatives, quality improvement and patient experience. Pratt’s dedication to PIH Health spans 45 years, during which she progressed from a nurse assistant to a nurse executive. Through her tenure, she has impacted the lives of thousands of nurses and patients who have benefitted from her compassion and innovation.

Pratt’s unwavering commitment and results-driven leadership have helped garner numerous accolades for PIH Health. Her resilience and expertise were particularly evident during the COVID-19 pandemic as she provided steadfast leadership, expert guidance and unwavering support to front-line staff and nursing leaders.

#1 CHOICE FOR MEDI-CAL IN L.A.

QUALITY HEALTH PLAN,
TRUSTED BY MILLIONS



L.A. Care
Medi-Cal

lacare.org/medi-cal



INDIVIDUAL AWARDS



OUTSTANDING HEALTH CARE INNOVATOR OF THE YEAR HONOREE

PARINI MEHTA

Principal
CO Architects

Recently elevated to Principal at CO Architects, Parini Mehta, AIA, LEED AP, is a nationally respected expert in healthcare design. She joined CO Architects in 2014, bringing over 15 years of experience in architecture, design and medical planning, and has helped the Los Angeles-based firm solidify its status as one of the country’s leading healthcare and medical-education designers.

Mehta has led complex, high-performance projects for institutions such as Cedars-Sinai Medical Center, Children’s Hospital of Los Angeles, Kaiser Permanente, Los Angeles General Medical Center (County USC), and UCLA Health. As a woman in a historically male-dominated profession, Mehta has navigated challenges of representation and leadership, breaking barriers to become a role model for the next generation of architects. She actively mentors upcoming healthcare designers, advocates for inclusive design, and fosters collaboration in an industry that demands both technical expertise and human-centered vision. She guides the planning and design of complex, high-performance buildings through an integrated and collaborative process with clients, consultants and contractors. She holds a Master of Architecture from the Southern California Institute of Architecture, and a Bachelor of Science in Architecture from the University of Michigan.

Mehta has shared her insights with the USC School of Architecture, Architectural Record Magazine Continuing Education Academy, Bisnow National Healthcare Conference, Environments for Aging Expo & Conference, and the Healthcare Facilities Symposium. Her leadership and dedication to equitable healthcare environments and commitment to lifting others make her a genuinely outstanding healthcare innovator.



MILIND GODBOLE

FINALIST

CEO and Managing Director
GeBBS Healthcare Solutions

As CEO of GeBBS Healthcare Solutions, Milind Godbole has led the development and deployment of advanced AI-enabled platforms across the revenue cycle, driving greater accuracy, reducing manual effort, improving compliance, and enhancing financial performance for both providers and payers.

Through his Automate, Innovate, Transform (AIT) strategy, Godbole has empowered clients to overcome rising costs, staffing shortages and regulatory demands with scalable, future-ready solutions that blend advanced analytics, robotic process automation, and machine learning. Under his leadership, GeBBS has launched proprietary platforms such as iCode Assurance, iCode Workflow, iAR, iCB, and iCRA – each designed to streamline complex revenue cycle processes, eliminate inefficiencies, and improve data accuracy across coding, billing, denial prevention, and risk adjustment functions. These platforms not only reduce manual dependencies but also enable real-time insights and proactive interventions.



ANDREW RITTER

FINALIST

CEO
Cairns Health

In 2022, Andrew Ritter was personally tapped by Vinod Khosla, founder of the multi-billion-dollar ventures fund, to take a breakthrough radar-based sensing technology and build a transformative solution for aging-in-place care. As CEO of Cairns Health, Ritter didn’t just commercialize the product, he built a mission.

Under Ritter’s leadership, Cairns developed Luna: a patented, voice-enabled care companion that uses ambient radar and AI to monitor vital signs like heart rate and respiratory rate, remind patients to take medications, and even engage them in meaningful conversation to combat loneliness and isolation. Luna is wearable-free, privacy-conscious and intuitive – designed specifically for older adults and their families. Cairns Health has the ability to reduce hospitalizations, ease caregiver burnout, and extend seniors’ ability to live independently.



DARSHAN SHAH

FINALIST

CEO and Founder
NEXTHEALTH

Dr. Darshan Shah is a visionary physician, scientist and entrepreneur whose contributions to health care innovation are reshaping the landscape of longevity and personalized medicine. As the founder of NextHealth, a leading health optimization and longevity clinic, Dr. Shah has transformed the delivery of proactive, preventative care – scaling his model across the nation through a rapidly growing franchise system.

A pioneer in integrating advanced diagnostics, biomarker tracking, and AI-powered medical protocols, Dr. Shah empowers patients to take control of their aging trajectory and metabolic health. His contributions are not only clinically impactful but culturally transformative – shifting the narrative of healthcare from disease treatment to optimal living. He is an inspiring leader, a powerful communicator, and a relentless advocate for a future where health care is intelligent, personalized and preventative.



YUHUA ZHANG

FINALIST

Principal Investigator, Doheny Eye Institute
Professor of Ophthalmology, David Geffen School of Medicine, UCLA Doheny Eye Institute

Yuhua Zhang, Ph.D., is a globally recognized innovator in vision research – particularly impacting the field of Oculomics, which is the study of how changes or abnormalities in the eye can reveal insights into systemic health and disease. He is not only pushing this field to new heights, but also working to drive collaboration among scientists by highlighting the impact state-of-the-art retinal imaging can have across multiple disciplines.

Dr. Zhang’s accomplishments have garnered recognition locally and internationally, and he is continuing to undertake exciting research that will continue to ripple through the scientific community and ultimately lead to positive impacts for people in Los Angeles and around the world. At Pasadena’s Doheny Eye Institute, Dr. Zhang leads the Advanced Ophthalmic Imaging Laboratory, which has developed state-of-the-art high-resolution retinal imaging instruments.

Keck Medicine of USC is proud to honor our leaders and programs recognized by the Los Angeles Business Journal at the Health Care Leadership Symposium & Awards. The outstanding work of our teams is focused on one goal — delivering world-class care tailored specifically for our patients.

Together we are Limitless



HOSPITAL CEO OF THE YEAR

Marty Sargeant

CEO

Keck Medical Center of USC



HOSPITAL EXECUTIVE OF THE YEAR

Annette Sy

Chief Nursing Executive Officer

Keck Medical Center of USC

OUTSTANDING COLLABORATION

Keck Medicine of USC / UCLA Health / OneLegacy

First In-Human Bladder Transplant



INDIVIDUAL AWARDS

TRUSTED ADVISOR OF THE YEAR **HONOREE**

GUSTAVO FRIEDERICHSEN

CEO
Los Angeles County Medical Association

Gustavo Friederichsen is a visionary leader devoted to advancing the medical community in Los Angeles through innovation, advocacy and collaboration. As CEO of the Los Angeles County Medical Association, Friederichsen’s leadership has been instrumental in uniting the collective voice of physicians across the region to drive meaningful change. In 2024, LACMA achieved record membership growth, a testament to his ability to inspire trust and build a unified community of health care professionals.

Among Friederichsen’s significant accomplishments in 2024 was his leadership in championing Proposition 35, a landmark policy initiative that directly benefits physicians and patients by securing critical resources and reducing barriers to health care access. This achievement underscores his commitment to ensuring that physicians have the support they need to deliver exceptional care while addressing systemic issues within the health care system.

Friederichsen is now known as a chief executive leader that is genuinely passionate about changing lives before changing organizations. His approach to leadership continues to evolve like people do; needs change, desires change, priorities change as trends and crisis impact even the best plan. He believes that what keeps an organization progressing towards greatness is a humble yet strong leader. He has stated that “What we can imagine propels us. What is unimaginable fuels us. What is unthinkable motivates us and what limits us is simply a detour until we find our way back to surprising ourselves.” By championing innovation, equity and collaboration, Friederichsen addresses systemic challenges, empowers health care leaders, and enhances patient outcomes.



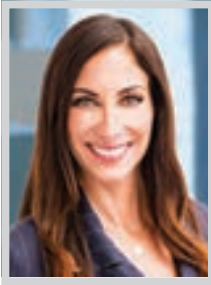
ADAM HEPWORTH

FINALIST

Partner
Foley & Lardner LLP

Adam Hepworth is known as a walking encyclopedia of health care regulations; his experience and knowledge have made him a reliable advisor to his clients. Hepworth’s practice focuses primarily on Medicaid and Medicare, administrative appeals, health privacy compliance, and navigating health care fraud and abuse laws.

Hepworth represents hospitals, Federally Qualified Health Centers (FQHCs), and other providers in Medicaid administrative appeals. He played an important role in the Tulare Pediatric Health Care Center v. State Department of Health Care Services case, which secured a ruling requiring full-cost Medi-Cal reimbursement for FQHCs that partner with external medical groups. Hepworth also advises on HIPAA, 42 C.F.R. Part 2, and privacy compliance in integrated care models addressing social determinants of health. He is also involved in shaping healthcare policy.



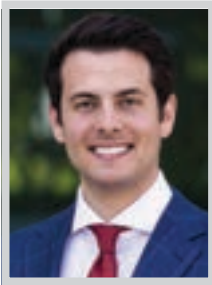
TORREY McCLARY

FINALIST

Partner, Health Care
Ropes & Gray

Torrey McClary has structured and negotiated some of the most prominent and complex health system deals in the country. She focuses on transformational projects for California and western region clients in addition to her broader national practice, advising academic medical centers, nonprofit and for-profit hospitals, and health systems in highly-regulated, deeply-scrutinized mergers, acquisitions and other transactions.

McClary leads her team on significant matters that are not only complex and unique in structure and scale, but make a large impact on the industry. Her transactions enhance health care delivery and outcomes in communities by improving quality and access to patient care and leveraging innovation, care models and technology. Her deals also incorporate preservation and enhancement of academic missions such as medical student training and education, research and innovation.



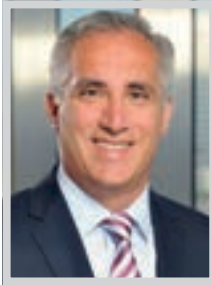
MICHAEL MORENO

FINALIST

Senior Vice President; Senior Director
Matthews Real Estate Investment Services

Michael Moreno is a driving force behind the success and growth of the Healthcare Division at Matthews Real Estate Investment Services, where he serves as senior vice president and senior director. Moreno specializes in the acquisition and disposition of healthcare real estate assets. He has played a key role in leading the firm’s Healthcare Division, which is recognized as one of the country’s most active healthcare real estate divisions.

Moreno has represented a wide spectrum of clients, including physician groups, operators, institutions, private equity firms, developers, and high-net-worth individuals. His expertise extends across both individual asset sales and complex portfolio transactions, with a strong focus on value creation and long-term client relationships. In his career, he has completed more than 932 transactions totaling over \$2.6 billion in sales volume.



GREGORY PIMSTONE

FINALIST

Partner
Manatt, Phelps & Phillips, LLP

As a trial and appellate lawyer representing California’s largest health care entities in their most significant matters, Greg Pimstone has worked on cases that have resulted in numerous precedent-setting decisions and has made new law that has transformed the health law field. He has been the lead counsel in more than 20 appellate opinions in California over the past decade, surpassing the amount published by any other health care litigator within the past 30 years.

Pimstone has been recognized by Chambers USA for more than 20 years in the field of Health Care, where he is one of seven people – and the only litigator – listed in Band 1 in California. He has been recognized by Chambers USA longer than any the other Band 1 health care attorney.

LA's Health and Wellness Partner

PIH Health is a nonprofit, regional healthcare network that serves Los Angeles County and Orange County. Our fully integrated network includes **3 hospitals, 31 outpatient facilities, 7 urgent care centers**, home healthcare services and more – **all focused on providing you with world-class, award-winning care.**

PIH HEALTH GOOD SAMARITAN HOSPITAL

CARING FOR THE COMMUNITY
FOR OVER 140 YEARS



PIHHealth.org

INDIVIDUAL AWARDS

OUTSTANDING HEALTH CARE VOLUNTEER OF THE YEAR **HONOREE**

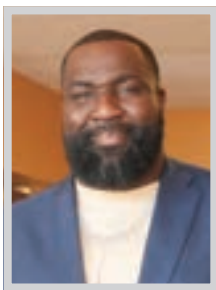
LOIS BENNETT

Music Enrichment Volunteer
PIH Health

Lois Bennett has been a dedicated volunteer at PIH Health for over 22 years, contributing nearly 6,000 hours in support of patients, staff, and the community. A former escrow officer, manager, and mother of three boys, Bennett turned to volunteering after the loss of her husband as a way to reconnect and give back. She found meaning in service, where her compassion and dedication made her an integral part of the organization. She has described her volunteer work as an opportunity to uplift others while healing herself.

Bennett began her volunteer journey at PIH Health Whittier Hospital in the Gift Shop and as a member of the PIH Health Auxiliary. In 2012, she became the first Music Enrichment volunteer. Today, her music fills the hospital lobby twice weekly as she plays the piano. Drawing from her teenage years, she curates setlists of timeless classics from the 1920s through the 1950s, captivating listeners of all ages. She closes each session with Louis Armstrong’s “What a Wonderful World,” delivering a hopeful message for those navigating difficult times.

The impact of Bennett’s music is felt throughout the hospital. Many staff say her performances help them relax and recharge before returning to work. Visitors, especially those awaiting news about loved ones, describe her music as a comforting distraction. With a personal goal to volunteer until she turns 100, Bennett is building a legacy rooted in kindness, resilience and purpose to uplift all who cross her path at PIH Health.



KENDRICK PERKINS

FINALIST
Sports Analyst
ESPN Sports

Cal Dental USA is redefining healthcare accessibility through its commitment to community outreach, innovation and affordability. With a mission to provide high-quality dental care while actively engaging in philanthropic efforts, the organization, with the support of NBA champion Kendrick Perkins, continues to prioritize service over profits, ensuring that underserved communities receive the care they deserve.

Perkins’s role has been instrumental in expanding these initiatives, utilizing his platform to forge partnerships, increase awareness and secure resources that make these outreach programs possible, so that the team, can work together to uplift communities. A voice such as Perkins’ has helped support Cal Dental USA’s dedication to community service, affordability and innovation, while also empowering it to be a standout leader in healthcare outreach – actively engaging, supporting and uplifting communities in need.



WENDY SMITH

FINALIST
Psychologist; Author; Retired Educator
(Retired)

Dr. Wendy Smith spent the first 20 years of her career in clinical practice, returning to school for her Ph.D. when her children reached school age. She loved her profession’s emphasis on both person and context, and taught child development and clinical practice to social workers earning their master’s degrees.

Because of her work with vulnerable youth, Dr. Smith was recruited by United Friends of the Children to help design a transitional housing program for foster youth. Human Rights Watch asked her to bring her expertise in adverse childhood experience and juvenile crime to workshops for juvenile offenders serving long prison sentences, and that experience inspired her to write a book about early childhood and juvenile crime.



JOIN US FOR THE 12TH ANNUAL LOS ANGELES Healthcare Awards



FORMERLY THE PATIENT CARE FOUNDATION

NOVEMBER 14 THE MAYBOURNE BEVERLY HILLS
[FUTUREMEDLA.ORG](https://futuremedla.org)



LOS ANGELES COUNTY MEDICAL ASSOCIATION

The Los Angeles County Medical Association proudly
congratulates all the honorees of the Los Angeles
Business Journal's 2025 Health Care Leadership Awards.

Your vision, dedication, and impact elevate the standard
of care, strengthen our community, and inspire the next
generation of healthcare leaders.

LACMA is honored to stand alongside you as we work
together to navigate change, champion innovation, and
protect the health of Los Angeles.

ORGANIZATION AWARDS



TOP MEDICAL CENTER OR HOSPITAL SYSTEM OF THE YEAR **HONOREE**

UCLA HEALTH

UCLA Health is among the world’s most advanced and comprehensive health care systems, with a mission to provide state-of-the-art patient care, generate research discoveries leading to new treatments and diagnoses, and train future medical professionals. UCLA Health offers an array of medical services at five medical centers: Ronald Reagan UCLA Medical Center; UCLA Mattel Children’s Hospital; the Stewart and Lynda Resnick Neuropsychiatric Hospital at UCLA; UCLA Santa Monica Medical Center; UCLA West Valley Medical Center; and a network of more than more than 280 specialty and primary care clinics across Southern California.

As an academic health system, UCLA Health – which includes the David Geffen School of Medicine at UCLA – provides access to technology and treatments that may not be available elsewhere. UCLA Health doctors and scientists are pioneering work in an astounding range of disciplines – from organ transplantation and cardiac surgery to neurosurgery and cancer treatment – and are bringing the latest discoveries to virtually every field of medicine.

A prominent aspect of UCLA Health’s five-year institutional goals for fiscal years 2024-2028 is to continue to improve patient access to UCLA Health services by providing timely, convenient and equitable access to the patients and communities it serves. In the past nine years, UCLA Health has added more than 100 clinics in Southern California and taken multiple other steps to enhance patient access, including last year’s acquisition of West Hills Hospital, now named UCLA West Valley Medical Center. This effort helped UCLA Health to immediately address the significant inpatient, emergency department and operating room capacity constraints in the health system.



ADVENTIST HEALTH GLENDALE FINALIST

Adventist Health Glendale is a 515-bed community hospital acclaimed for world-class tertiary care. Under the visionary leadership of president Alice Issai, the hospital has undergone a remarkable transformation, emerging as a regional leader in advanced clinical programs, patient safety and high-quality care.

From cutting-edge cardiovascular interventions and minimally invasive robotic surgery to advanced cancer therapies and comprehensive stroke treatment, the hospital consistently offers services typically associated with major academic centers, while maintaining a patient-centric, community-first approach. Under Issai’s guidance, the hospital has expanded access to clinical trials, invested in physician-led innovation, and enhanced patient engagement technologies. In a time of immense pressure on healthcare institutions, Adventist Health Glendale continues to set the standard for what a high-performing, community-based hospital can provide.



CITY OF HOPE FINALIST

At a time when one in three Americans will be diagnosed with cancer, City of Hope is making hope a reality for patients across the country. As one of the largest and most advanced cancer research and treatment organizations in the United States, City of Hope is transforming the future of healthcare, pushing the boundaries of science while working to ensure that lifesaving treatment reaches more people, more equitably.

City of Hope is an independent academic institution with a 110-year legacy of trailblazing discoveries – from the invention of synthetic human insulin to breakthroughs in monoclonal antibodies, precision medicine and immunotherapy. What makes City of Hope unique is its fully integrated model: From discovery to delivery, patients benefit from in-house scientific advances translated directly into care.



DIGNITY HEALTH - ST. MARY MEDICAL CENTER FINALIST

St. Mary Medical Center in Long Beach demonstrates a profound commitment to patient care and community well-being. The medical center’s dedication is evident through its numerous accolades and initiatives. The hospital has earned recognition as a High Performing Hospital by U.S. News & World Report for 2024-2025, signifying care that surpasses national averages in patient outcomes. This distinction underscores the hospital’s focus on delivering exceptional medical services. Furthermore, St. Mary Medical Center has been recognized as an LGBTQ+ Healthcare Equality High Performer by the Human Rights Campaign Foundation.

Beyond clinical excellence, St. Mary Medical Center actively engages in community outreach. The hospital’s Community Health Improvement Program has contributed over \$100 million to local health initiatives since 1991.



EMANATE HEALTH FINALIST

Emanate Health, a California nonprofit public benefit corporation, is a regional health care system comprised of three hospitals and nearly 20 ambulatory clinics that serve one million residents in the San Gabriel Valley. These locations offer comprehensive health care services guided by a mission: Emanate Health exists to help people keep well in body, mind and spirit by providing quality health care services in a safe, compassionate environment.

For example, Emanate Health Inter-Community Hospital in Covina provides specialized services which include the award-winning Emanate Health Heart Care Center (a STEMI-receiving center that offers open heart procedures, structural heart procedures, cath lab procedures and cardiopulmonary rehabilitation services), a behavioral health unit, wound care including hyperbaric therapy, and an award-winning transitional care unit.



City of
Hope®

TOP RESEARCH ORGANIZATION HONOREE

CITY OF HOPE

City of Hope is one of the world’s most respected institutions for cancer research and biomedical innovation, with a 110-year legacy of scientific discovery that continues to impact millions of people each year.

Widely referred to as “the birthplace of biotech,” City of Hope research has led to breakthrough treatments for cancer, diabetes, HIV, sickle cell disease and other serious illnesses. Its scientists helped unlock the healing potential of monoclonal antibodies, invented synthetic human insulin, and contributed to the development of game-changing “smart” cancer drugs such as Herceptin, Rituxan, Erbitux and Avastin – therapies that now benefit more than 100 million people annually.

Today, City of Hope is at the forefront of translational research, working to speed cures from lab-to-life. With more than 1,000 researchers, many of them internationally recognized leaders in their fields, City of Hope continues to push the boundaries of what’s possible in precision medicine, immunotherapy, genomics and cellular therapies. It is among the few institutions in the country to house two on-campus Good Manufacturing Practices (GMP) facilities, giving its scientists the rare ability to move novel therapeutic discoveries quickly and cost-effectively into clinical trials.

The organization leads more than 700 active clinical trials and is a global leader in CAR T cell therapy, having treated more than 1,600 patients to date. Its scientists have also pioneered outpatient delivery of CAR T treatments – making advanced therapies more accessible and more affordable. In genomics, City of Hope is pursuing the ambitious goal of sequencing every cancer patient’s tumor to tailor the most precise and effective treatment plan possible.



DOHENY EYE INSTITUTE
FINALIST

For nearly a century, Doheny Eye Institute has been a pioneer in vision research, serving as a beacon of scientific progress made possible by the enduring generosity and support of the Los Angeles community. Thanks to this support, Doheny has acquired cutting-edge equipment and resources that have enabled groundbreaking advancements in understanding and treating vision-impairing diseases such as age-related macular degeneration, glaucoma, uveitis, diabetic retinopathy, and many others. Doheny scientists are also at the forefront of exploring new technologies, such as artificial intelligence, to improve the diagnosis and management of ocular diseases.

This work is made possible by Doheny’s commitment to supporting the research of world-renowned scientists who are pushing the boundaries of discovery. Doheny researchers continue to make critical contributions that resonate across the global scientific community.



USC UROLOGY,
Part of Keck Medicine of USC
FINALIST

USC Urology has rapidly established itself as a pioneer and world leader in the most advanced robotic urologic oncologic surgeries for kidney, bladder, prostate, testicular and penile cancers, and has achieved important milestones leveraging machine learning and artificial intelligence to optimize patient outcomes.

USC Urology has long been considered a pioneer of minimally invasive and robotic surgical techniques. Each year, the prior to the American Urologic Society annual meeting, USC Urology hosts urologists from all over the world at for an educational symposium of live robotic surgery demonstrations, offering optimized techniques for ideal outcomes. USC Urology also strives to find ethical, optimal ways to implement artificial intelligence in patient care, administration and research. The Center for AI brings together interdisciplinary researchers is working toward numerous initiatives.



ORGANIZATION AWARDS



TOP SAFETY NET PROVIDER **HONOREE**

ANTELOPE VALLEY MEDICAL CENTER

Since 1955, Antelope Valley Medical Center (AVMC) has been the leading hospital in the heart of the Antelope Valley. AVMC is a facility of the Antelope Valley Healthcare District, which meets the needs of communities with severe healthcare provider shortages, uninsured Californians and underserved populations. As a 420-bed, full-service, acute-care hospital, AVMC serves a population of over half a million residents, and offers comprehensive medical services, including emergency care, advanced surgical procedures, maternity and neonatal care, cardiovascular care, and the region's only level II trauma center, pediatric and inpatient behavioral health unit.

As one of the largest employers in the area, AVMC creates a local economic impact by employing a workforce of 3,000 community members. As a Safety Net Hospital, AVMC is vital to the area, with the Antelope Valley's only level II Trauma Center and the only level IIIB NICU within a service area that spans more than 1,500 square miles, moreover, is the home to the second busiest Emergency Department in California.

AVMC successfully implemented new service lines to meet the growing medical needs of the community by developing the stroke lab for advanced care of stroke patients, adding three new heart programs: the Transcatheter Aortic Valve Replacement, or TAVR heart procedure, a minimally invasive procedure to replace diseased aortic valves without performing open-heart surgery; The Mitral Valve Clip Procedure, a non-surgical alternative to repair a damaged mitral heart valve; and the Left Atrial Appendage Occlusion Implant procedure, which is an effective way to reduce stroke risk in patients diagnosed with atrial fibrillation.

STATE *of* the HOSPITALS LOS ANGELES



The **Hospital Association of Southern California (HASC)** will host a special convening to discuss the state of Los Angeles County hospitals and the broader health care landscape. This forum brings together hospital leaders, county health agencies, elected officials, and the LA business community to address urgent financial pressures, hospitals' impact on the regional economy, and behavioral health challenges.

THURSDAY, SEPTEMBER 25, 2025
9:00 a.m. – 12:30 p.m. PT

ASU CALIFORNIA CENTER BROADWAY
1111 S. Broadway, Suite 100
Los Angeles, CA 90015



Please **RSVP** by **September 15, 2025**. Scan this QR code to RSVP.



DIGNITY HEALTH
SOUTHERN CALIFORNIA
FINALIST

Dignity Health’s hospitals are deeply embedded in their respective communities, providing essential services to diverse populations. California Hospital Medical Center, for example, has served Downtown Los Angeles for over 127 years, demonstrating a long-standing dedication to the city’s residents. Northridge Hospital Medical Center stands out as the only pediatric trauma center in the San Fernando Valley, addressing a critical need for specialized care. St. Mary Medical Center in Long Beach continues its legacy of quality medical services, upholding a commitment to the best patient experience. Glendale Memorial Hospital and Health Center focuses on improving the health and quality of life for the people they serve, and will soon celebrate its centennial in 2026, marking 100 years of healing and compassionate care.



VALLEY PRESBYTERIAN HOSPITAL
FINALIST

From emergency services to long-term health support, Valley Presbyterian Hospital continues to be a vital resource for the San Fernando Valley — ensuring access to care, fostering growth, and safeguarding the health and well-being of our community for generations to come. Valley Presbyterian Hospital’s enduring goal is to be a vital asset to the community because for the hospital’s team members, this Valley is not just an area of operation. It is their home. And its people are not just patients. They are friends, partners and community. The hospital builds the facilities and services specifically focused on the needs of those in the Valley community, helping patients manage and improve their health by providing access to a wide array of education and support.



Healthcare data can be messy.
People's care shouldn't be.

We help healthcare organizations overcome fragmented data and workflows to improve the quality of care and patient outcomes.





ORGANIZATION AWARDS



EDUCATIONAL OR INSTITUTIONAL PROGRAM OF THE YEAR **HONOREE**

UCLA HEALTH

The David Geffen School of Medicine at UCLA (DGSOM) is an internationally recognized leader in medical education, research and patient care, with a mission to heal humankind through leading-edge advancements and community engagement. The school consistently ranks among the top medical schools in the nation, according to U.S. News & World Report and other ranking organizations.

DGSOM is a leader in medical education and prepares the next generation of physicians and scientists through a curriculum that emphasizes rigorous academic training, compassionate patient care, and groundbreaking research. The school offers a variety of programs including MD, PhD, and MD-PhD programs. As one of the nation's top medical schools, students become leaders prepared to make meaningful impacts in healthcare locally and globally. As part of UCLA Health, an academic medical center, the school is affiliated with top-ranked hospitals like Ronald Reagan UCLA Medical Center and Los Angeles County-Harbor-UCLA Medical Center, offering students opportunities for hands-on learning from experts renowned in their fields. The school has more than 850 students, 3,500 clinical and basic science faculty, 1,300 medical residents and fellows, and 400 doctoral students.

The school is a hub for medical research, with faculty and trainees making significant discoveries and advancements in various fields. Since 2003 alone, research conducted at DGSOM has resulted in 21 new U.S. Food and Drug Administration-approved cancer treatments. DGSOM is among the nation's top recipients of federal funding for scientific research. In the most recent fiscal year, the medical school research program received \$1.2 billion in awards including \$570 from the National Institutes of Health.

LOS ANGELES BUSINESS JOURNAL

THE LISTS 2026

THE #1 MOST-REFERENCED BUSINESS RESOURCE IN SOUTHERN CALIFORNIA

Position your brand alongside the **top companies, executives, and decision-makers** featured in more than 100 exclusive lists — and gain access to over **2,500** of L.A.'s top companies you want to do business with.

From **real estate** and **finance** to **health care, law, tech**, and more, the **THE LISTS 2026** is the ultimate visibility platform and credibility builder for the year ahead.

WHY IT WORKS:

- Used in offices, boardrooms, and C-suites
- Trusted source by top-level decision-makers and influencers
- Aligns your brand with business excellence
- Maximum Exposure – Shared, saved, and referenced all year

Publication Date: **December 29, 2025**

Space Reservation: **August 29, 2025**

Materials Due: **November 7, 2025**

Reserve your Ad Space Now: Call **(323) 549-5225** or email **advertising@labusinessjournal.com**





CARE FOR THE CAREGIVER PROGRAM,
KECK MEDICINE OF USC

FINALIST

Caring for the caregivers is directly linked to Keck’s ability to deliver quality, innovative and compassionate care to patients. The stressors of the ongoing COVID-19 global pandemic highlighted the critical need to establish services that support the health and well-being of caregivers. Care for the Caregiver (C4C) is a comprehensive program designed to ease potential work environment stress for our dedicated health care staff.

The Care for the Caregiver program, in collaboration with the Department of Psychiatry and the Behavioral Sciences and the USC WorkWell Center, is designed to offer support during challenging times in a number of ways, from clinical referrals for mental health care needs to the Emotional Support Line and Peer Support Program to connect employees with a peer to help process emotional events.



THERAPEUTIC PLAY FOUNDATION
FINALIST

The Therapeutic Play Foundation (TPF) is redefining community-rooted healthcare and mental wellness in California. TPF has developed a model that blends clinical excellence with cultural relevance – one that’s now being adopted by schools, counties and community-based partners across the state.

At the heart of this innovation is ArtGard, a therapeutic art and gardening initiative that integrates creativity, cultural identity, and Social Emotional Learning to support whole-person mental health. The program is deeply grounded in play therapy practices and TPF’s signature Collective Care framework, which centers healing through connection, empowerment and culturally inclusive support. Participants of all ages – mothers, fathers, children, and especially youth – engage in art- and nature-based activities that help process trauma, reduce stress, and build emotional resilience.

Proud to Collaborate with City of Hope
to Advance Cutting-Edge Cancer Care



ORGANIZATION AWARDS



COMMUNITY CLINIC OF THE YEAR HONOREE

GRACELIGHT COMMUNITY HEALTH

Gracelight Community Health is a beacon of hope and an inspiration to all community health centers. The organization believes that everyone is entitled to quality healthcare, delivered with skill, compassion and dignity. The organization has deep ties to the Los Angeles community that span more than 125 years. The legacy of the organization is built on the initial vision of the Franciscan Sisters and an enduring commitment to providing care for all, regardless of patient income, insurance or immigration status.

To the Gracelight team, “there is nothing you have to do or be to deserve a healthy life.” Gracelight provides complete and comprehensive health services for all, regardless of ability to pay. Each center location is staffed with highly trained medical professionals and fees for care are always based on what each patient can afford. At Gracelight Community Health, the team has consistently worked to become Los Angeles’ home for compassionate and comprehensive health and wellness services. The healthcare philosophy is rooted in connection, compassion and quality care for all. Gracelight aims to shine a light on the best care possible that affirms and uplifts its patients.

Gracelight is a Federally Qualified Health Center with five locations throughout the communities of Los Angeles, serving the patients that have the most to gain from quality medical care. The organization advocates for improved health and wellness for all. Education and empowerment are considered important components of the care provided, and healing is considered to be not just a measure of being free from disease, but of thriving in health and in life.



ANGELS FOR SIGHT FINALIST

Angels for Sight, a prominent leader in community vision care and recognized as a 2017 Nonprofit of the Year in California, was incorporated in 2004 and officially opened its first vision clinic in Compton in February 2007. Backed by prominent civil rights and political leaders who have served in the highest offices of justice, the organization has provided thousands of children, families, seniors, veterans and those unhoused with free vision screenings, eye examinations and glasses.

In 2025, Angels for Sight will expand its impact with the opening of a new state-of-the-art vision clinic in Long Beach. This advanced facility will enable the organization to better serve the residents of Compton and Long Beach while reaching an even greater number of individuals in underserved areas throughout Los Angeles County.



BENEVOLENCE HEALTH CENTER FINALIST

Since 2005, Benevolence Health Centers (BHC) has provided quality health care and excellent educational programs to the under-served and uninsured in Southern California. The organization’s goal is to be a beacon of hope for minorities and economically disadvantaged communities. BHC regularly serves more than 5,000 families each year, providing community access to medical, dental and mental health clinics, including adult day health care centers, case management, youth programs as well as HIV/AIDS prevention and treatment.

At BHC, the team exceeds expectations with compassionate and affordable care. Benevolence Health Centers have an integrated system of care that emphasizes prevention of illnesses to an individual’s total health. The BHC team believes this is the best way to help alleviate unnecessary trips to already overextended emergency rooms.



UMMA HEALTH FINALIST

UMMA Health’s Community Clinic opened its doors in 1996 as a direct response to the Los Angeles Riots, to help heal the South Los Angeles community. The clinic’s mission is to promote the well-being of the underserved by providing access to high-quality healthcare for all, regardless of ability to pay.

UMMA Health’s Community Clinic’s services, activities and governance reflect the Islamic values and moral principles which inspired UMMA’s founders. These include the core values of service, compassion, human dignity, social justice and ethical conduct. UMMA’s services include family and internal medicine, pediatrics/childhood immunizations, on-site mammography services, on-site laboratory services, Hepatitis C testing, HIV/STI testing, family/contraceptive planning, adolescent medicine, prenatal care, women’s health, behavioral health services, direct referrals to local county facilities, and health education.



Keck Medicine
of USC

UCLA Health



OUTSTANDING COLLABORATION OF THE YEAR HONOREE

KECK MEDICINE OF USC; UCLA HEALTH;
and ONELEGACY

Surgeons from Keck Medicine of USC and UCLA Health have performed the world’s first-in-human bladder transplant. The surgery was successfully completed at Ronald Reagan UCLA Medical Center on May 4, 2025, in a joint effort by Inderbir Gill, MD, founding executive director of USC Urology, and Nima Nassiri, MD, urologic transplant surgeon and director of the UCLA Vascularized Composite Bladder Allograft Transplant Program.

Nassiri, formerly a urology resident with the Keck School and now assistant professor of urology and kidney transplantation at UCLA, and Gill worked together for several years at the Keck School to develop the new surgical technique, design a clinical trial and secure the necessary regulatory approvals.

Numerous pre-clinical procedures were performed both at Keck Medical Center of USC and OneLegacy, Southern California’s organ procurement organization, to prepare for this first-in-human bladder transplant.

The patient had been dialysis-dependent for seven years. He lost the majority of his bladder during surgery to resect cancer over five years ago, leaving the remainder of his bladder too small and compromised to function appropriately. Both of his kidneys were subsequently removed due to renal cancer.

To address these deficits, Drs. Gill and Nassiri performed a combined kidney and bladder transplant, allowing the patient to immediately stop dialysis and produce urine for the first time in seven years. First the kidney, then the bladder, were transplanted. The new kidney was then connected to the new bladder. The entire procedure took approximately eight hours.

The recovery of the kidney and bladder from the donor was performed at OneLegacy’s Transplant Recovery Center in Azusa.



OPositivHealth

AMERICAN CANCER SOCIETY
and O POSITIV HEALTH
FINALIST

In 2024, O Positiv Health, in collaboration with The American Cancer Society, were champions in the fight to end breast cancer as we know it within the Santa Monica Community and beyond. O Positiv Health, which prioritizes wellness and women’s vaginal health and is headquartered in Santa Monica, made the commitment to join forces with The American Cancer Society by becoming the Presenting Sponsor of Making Strides Against Breast Cancer of Santa Monica.

This celebration of courage and hope is a national movement uniting communities to end breast cancer. For three decades, these three- to five-mile non-competitive walks have collectively grown into the nation’s largest and most impactful breast cancer movement – providing a supportive community for breast cancer survivors and metastatic breast cancer thrivers, caregivers, and families alike.

CO ARCHITECTS



EWING COLE
ARCHITECTS
ENGINEERS
INTERIOR DESIGNERS
PLANNERS



CO ARCHITECTS; CITY OF HOPE;
EWINGCOLE; and
DPR CONSTRUCTION
FINALIST

For healthcare buildings, CO Architects has been at the forefront of sculpting the way that professionals practice at every level, with the goal of improving patient outcomes and staff experiences. CO’s latest Los Angeles-area collaboration is City of Hope’s new Hope Plaza outpatient center, the largest building on the organization’s Duarte campus. The project also includes an award-winning parking structure, and the Ted Schwartz Family Hope & Healing Park designed by Moore Iacofano Goltsman, which serves as a welcoming gateway.

Hope Plaza consolidates outpatient services previously spread among four buildings. With architecture and interiors designed collaboratively by CO Architects and EwingCole, Hope Plaza draws inspiration from the natural flow of water from the San Gabriel Mountains, symbolically serving as a sculptural boulder within an urban river wash.



seiu 2015

L.A. CARE HEALTH PLAN
and SEIU LOCAL 2015
FINALIST

Since 2017, L.A. Care Health Plan has worked in partnership with the Center for Caregiver Advancement (CCA) and the Service Employees International Union (SEIU) Local 2015 to provide training to In-Home Supportive Services (IHSS) workers in Los Angeles County. The 10-week training program covers practical skills such as CPR, first aid, infection control, nutrition, body mechanics, among other topics, to build skills and job confidence in thousands of caregivers who support the health and well-being of low-income older adults and people with disabilities – the most vulnerable populations across the County.

The collaboration between CCA, L.A. Care and SEIU Local 2015 models a durable and deep partnership that advances the caregiving workforce. It is designed to meet the needs of consumers and caregivers alike.



Anthem



THERAPEUTIC PLAY
FOUNDATION; ANTHEM;
CWC MAR VISTA;
and ST. BRIGID CATHOLIC CHURCH
FINALIST

The Therapeutic Play Foundation (TPF) is transforming what community-rooted healthcare looks like in California – and creating a blueprint that other systems are now following. As a part of these efforts, TPF utilizes an evidence-informed, culturally responsive approach that integrates clinical services, peer support, and trauma-informed wellness practices to improve access and outcomes in under-resourced communities.

When California launched its CalAIM initiative, TPF became one of the first community-based organizations to deliver Enhanced Care Management (ECM), not only aligning its operations to meet the complex demands of Medi-Cal but also helping shape how ECM is understood and implemented across the state. The work has resulted in partnerships with multiple Managed Care Plans, emerging nonprofits, and shaping policy with decision-makers.



ORGANIZATION AWARDS



OUTSTANDING COMMUNITY OUTREACH HONOREE

PRIME HEALTHCARE

Prime Healthcare is one of the largest physician-led health systems in the nation, with 51 hospitals and more than 360 outpatient locations across 14 states. Caring for over 2.5 million patients annually, Prime remains committed to delivering high-quality, patient-centered care and improving the health of the communities we serve, many of which are underserved or at-risk.

Prime’s impact goes beyond outcomes. Through strategic investments and innovation, Prime has expanded access to care, especially through partnerships like its telehealth initiative with Equum Medical. This supports timely access to physicians and specialists while enhancing clinical coverage across markets. Prime’s not-for-profit hospitals, supported by the Prime Healthcare Foundation, further a mission of care in vulnerable communities. Since its founding, Prime has reinvested more than \$14 billion into charity care and community benefits, along with more than \$2.7 billion in capital improvements. These resources strengthen care delivery and ensure sustainability for hospitals serving on the front lines.

Prime Healthcare continuously strives to advance quality, safety and equity in healthcare while supporting its patients, caregivers and communities. In celebration and support of the communities it serves, Prime Healthcare donates millions of dollars annually to improving healthcare and increasing educational opportunities. Its leadership team is inspired by a passion for healing and education. The Prime Healthcare Foundation and the affiliated Dr. Prem Reddy Family Foundation are stewards of private funds to be used for public good, and to fulfill a commitment to give back to the families, friends and surrounding neighborhoods.

Celebrating 70 Years

Honoring the Past, Innovating for the Future



Antelope Valley
Medical Center



Congratulations to the entire team for our recent nomination as **Top Hospital of the Year** and for being named the **Top Safety Net Provider** at the Los Angeles Business Journal’s Healthcare Leadership Awards.

This recognition is a testament to our legacy of excellence in patient care, innovation, and community impact. For seven decades, AVMC has remained committed to advancing healthcare through state-of-the-art technology and compassionate service, ensuring that every individual receives the highest standard of care.

Follow us @avmedicalcenter



1600 West Avenue J, Lancaster, CA 93534 / www.avmc.org / 661-949-5000



CANCER SUPPORT COMMUNITY
GREATER SAN GABRIEL VALLEY
FINALIST

For over 30 years, Cancer Support Community has provided psychosocial support and evidence-based knowledge for those impacted by cancer through counseling, community and connection alongside a patient’s oncological care at no cost. This support includes group and individual counseling led by mental health professionals, educational workshops presented by medical health professionals, healthy lifestyle classes, social activities, and resources, for patients, caregivers, survivors, families and those experiencing loss.

Since January 2022, Cancer Support Community has achieved remarkable milestones. Following the success of its groundbreaking “Be the Key” capital campaign, which raised \$3.75 million, the organization relocated to a state-of-the-art, 7,000-square-foot facility in Sierra Madre.



KECK SCHOOL OF MEDICINE
OF USC
FINALIST

While the Keck School of Medicine of USC prepares students to become the leaders of tomorrow, it also engages the local community to show kids and young adults the possibilities for fully realizing their potential.

For example, the Surgeon for a Day program brings middle-schoolers to USC for an early look at health care careers with a sneak peek into surgeons’ work. Students take part in hands-on activities that fire their imaginations about future options for working in health care and biomedical science. Also, the USC BRAIN program offers a second chance for recovering individuals and a path to a career in bioscience. BRAIN is a 12-month lab training program through the USC Norris Comprehensive Cancer Center that partners with the Beacon House Association of San Pedro.



LOVING HOME HOSPICE
FOR CHILDREN
FINALIST

Hospice is something generally thought of for older people. However, that’s not the case. Children are not immune to terminal illnesses, and they need palliative hospice care just like anyone else. That’s why there’s Loving Home Hospice for Children in California.

The organization’s number one goal is to provide each child with comfortable loving care. Not only that, but the team is there to provide emotional and physical support for the parents too. Loving Home Hospice for Children encourages parents to participate in hospice care. This helps with the emotional pain and grief. The toll a terminally ill child is a gigantic and unfathomable one. Loving Home Hospice for Children aims to help those parents comfort and love their child when they need it most.



VALLEY INTERCOMMUNITY
COUNCIL
FINALIST

The Valley InterCommunity Council’s (VIC’s) mission is to reduce food insecurity and social isolation among older adults by providing free nutritious hot meals, wellness programs, social activities, and transportation – uplifting and connecting seniors across the San Fernando Valley with compassion, dignity, and care.

Healthy meals are assembled at the organization’s three multipurpose centers, at no cost to at-risk low-income Seniors. Also provided are wellness programs, exercise courses and social activities, as well as transportation to and from the three centers for otherwise homebound seniors. For over 60 years, VIC has been bringing together and uplifting Seniors from diverse communities across the San Fernando Valley.





IMA would like to congratulate Gracelight Community Health as this year's 2025 Health Care Leadership Awards Community Clinic of The Year Honoree!

Insurance | Employee Benefits | Surety | Retirement

IMACORP.COM



ORGANIZATION AWARDS



BEST HEALTH CARE TECHNOLOGY & ADVANCEMENT
PRODUCT OF THE YEAR **HONOREE**

SPINTRAY

Dentistry had not fundamentally changed in over a century. For more than 100 years, patients endured the same fragmented process: physical impressions, outsourced lab work, multiple visits and long delays. Even with digital imaging, treatment workflows remained slow, expensive and inaccessible to many. SprintRay changed that.

Founded by Dr. Amir Mansouri, Dr. Jing Zhang, Hossein Bassir, and Liang Jin (based in China), SprintRay reimagined dentistry as a real-time, chairside experience. Its innovations brought high-quality dental design and manufacturing into the clinic itself – empowering clinicians to deliver permanent restorations in minutes, not weeks. This wasn’t an iteration of tradition. It was a full-scale reinvention. In 2024 alone, SprintRay systems produced over two million dental appliances. In 2025, the company is on track to double that number, reaching more people, in more places, through both commercial and humanitarian care channels.

SprintRay’s integrated hardware, AI software, and materials ecosystem is designed to deliver clinical-grade dentistry anywhere – from private practices to pop-up clinics in the most remote corners of the world. For example, SprintRay has developed the world’s fastest digital crown system, producing three permanent crowns in under 10 minutes. The technology, called MIDAS, uses capsule-based resins and integrates seamlessly with AI-driven workflows. It supports FDA-cleared Ceramic Crown and OnX Tough 2 resins and was named iDD 3D Printer of the Year (2024). Also, SprintRay’s flagship desktop printer, the Pro 2 3D Printer, can be used for multi-indication use: splints, dentures, aligners, surgical guides, and more.



Congratulations to All Who Are Advancing Health Care in Los Angeles

A special thank you to our partners **L.A. Care** and **SEIU Local 2015** for their shared commitment to uplifting paid caregivers and strengthening home and community-based care for older adults and people with disabilities.



advancecaregivers.org

REGISTER TODAY!



The Los Angeles Business Journal is proud to host the 19th annual CFO of the Year Awards.

Join us as we honor finance professionals in the Los Angeles region today for their ongoing efforts as outstanding financial stewards.

THURSDAY, SEPT. 25

InterContinental Los Angeles Downtown | 6:00PM - 8:30PM PST

Register at labusinessjournal.com/events/cfoawards2025

DIAMOND SPONSORS



PLATINUM SPONSORS



GOLD SPONSORS

Citrin Cooperman | City National Bank | Ernst & Young LLP | FEI | GHJ | Lucas Horsfall
Poms & Associates Insurance Brokers



CAIRNS HEALTH
FINALIST

Cairns Health is tackling one of the most urgent and complex challenges in modern healthcare: how we care for an aging population that overwhelmingly prefers to age at home, despite a national shortage of caregivers and strained health systems.

Cairns Health is tackling the challenge head-on with Luna, a patented, AI-powered digital care companion designed to transform homes into safe, smart and supportive care environments. Luna combines ambient radar-based monitoring with conversational AI to deliver proactive, personalized care (no wearables, cameras, or manual inputs required). It continuously tracks vital signs like heart rate, respiration and sleep, while learning behavioral patterns to detect early signs of health changes. Through natural, two-way conversations, Luna reminds patients to take medications, guides them through care routines, and nudges them toward healthy habits.



ONELINE HEALTH
FINALIST

OneLine Health is fundamentally reimagining how care begins, delivering the first enterprise-grade Clinical Reasoning AI Agent that works before the physician even steps into the room.

While most digital health tools focus on documentation after the visit, OneLine starts earlier – automating pre-visit clinical intake, synthesizing fragmented patient records, and generating real-time, structured clinical insights that mirror the thought process of expert physicians. By combining dynamic conversational AI, document extraction and specialty-specific reasoning, OneLine delivers comprehensive insights tailored to each physician’s specialty and scope of practice, ensuring the right context for every patient encounter, transforming inefficient, manual processes into intelligent, streamlined workflows. Deployed at major institutions such as USC, OneLine has already demonstrated significant ROI.



PRENUVO
FINALIST

Prenuvo is pioneering proactive healthcare with whole-body MRI technology. In under an hour, without harmful radiation or contrast, Prenuvo scans can detect hundreds of conditions, helping catch potential health issues early, often before symptoms even appear, so people can take action long before a crisis hits. Existing tests and scans offer only fragmented snapshots of the body.

Prenuvo changes that by delivering comprehensive whole-body health insights, screening for early-stage tumors, aneurysms, metabolic disorders, autoimmune conditions, and body composition metrics. Prenuvo was founded by Andrew Lacy to shift healthcare from reactive “sick-care” to proactive health management. The idea emerged from Lacy’s personal experience in 2008 when he sought answers about his own health and realized how difficult it was to access clear, comprehensive insights.



REVELEER
FINALIST

Reveleer is an AI-powered healthcare technology company that enables health plans and providers to operate more efficiently and deliver better care. Its platform uses machine learning and natural language processing to automatically collect, interpret and analyze complex health data, both structured and unstructured. By streamlining workflows and reducing administrative burden, Reveleer helps value-based care organizations lower costs, improve compliance, and make faster, more informed decisions. This leads to earlier identification of care needs, better coordination, and improved health outcomes for individuals. With Reveleer, value-based care organizations can scale critical programs and succeed in a value-based care environment.

Reveleer is purpose-built to solve the most pressing real-world challenges faced by providers and health-plan organizations today.



More comprehensive care starts here

**Advancing care. Expanding access.
Strengthening communities.**

Adventist Health delivers advanced, innovative, whole-person care where we live and work. From cardiovascular and stroke care to cancer, pulmonary, and digestive health, our comprehensive network strengthens the well-being — and vitality — of Southern California.



Glendale | Los Angeles | Montebello | Simi Valley

ORGANIZATION AWARDS



BEST NEW PRODUCT OR SERVICE HONOREE

SOLLIS HEALTH

Sollis Health is the only medical membership on-demand 24/7, 365. Having a Sollis membership is like having a doctor in the family. The service strives to be each patient's first call and greatest partner through any medical concern. With a focus on convenience and personalized attention, Sollis provides in-clinic, remote, and house-call visits, bridging the gap between urgent, chronic and emergency care for residents in the LA area. The patient-first model is resonating across California, with five of Sollis' 13 nationwide centers located in the state, including Beverly Hills, Santa Monica, Manhattan Beach, San Francisco and Palo Alto.

Responding to challenges of long wait times, overwhelmed providers, and lack of personal attention in the traditional healthcare system, Sollis announced the nationwide rollout of its new Family Membership, tailored to families with children under the age of 18, in October of 2024.

The new membership offers access for families of any size to Sollis' ER-boarded physicians and capabilities, virtually or in state-of-the-art medical centers in Los Angeles and Northern California. The membership also includes new offerings such as a premium allergen testing service for children under 18, as anaphylactic emergencies are among the most fear-inducing for parents; a complimentary house call for ultimate convenience; and even access to concierge pediatrics for members in Southern California through the Family+ offering.

The Family Membership is especially valuable for busy LA households, as Sollis' average wait time is just 3.5 minutes compared to 3.5 hours in a typical ER.



ASPIVIX FINALIST

Aspivix is redefining the standard of care in gynecology through its mission to make routine procedures less painful, more dignified, and more respectful for women. Its flagship innovation, Carevix, is a suction-based cervical stabilizer that replaces the tenaculum, a sharp, traumatic instrument invented over a century ago.

Carevix is FDA-cleared and CE-marked, with clinical data from IU Health and Columbia University supporting its efficacy. Over 1,300 patients have benefited from the device, with a remarkable 94% patient satisfaction. Carevix significantly reduces pain and bleeding during intrauterine procedures such as IUD insertions, endometrial biopsies, and fertility assessments. Aspivix has also led national conversations around the urgent need for innovation in gynecology. Its viral awareness campaign, reaching over 3.3 million views on TikTok, has sparked powerful dialogue.



FOLIUM PX (Subsidiary of the BAO Health Resources Corp.) FINALIST

Folium pX is a plant based nutraceutical manufactured and distributed by BAO Health Resources. Folium pX was developed in the Georgian State of the former USSR at the direction of the government following the Chernobyl disaster. The product was created and developed by local scientist in the Eastern Europe (Former USSR) to cleanse the body of free radicals by inactivating them in order to improve the health of individuals who were exposed to radiation. By combining local potent plants and herbs, Folium pX has a strong Oxygen Radical Absorbance Capacity.

Folium pX has been available in Europe in liquid form for many years. BAO Health Resources has the exclusive right to manufacture and distribute Folium pX worldwide to consumers in capsule form.



LOS ANGELES BUSINESS JOURNAL
HEALTH CARE
2025 LEADERSHIP AWARDS

Study Identifies Potential Biomarkers to Predict SIDS Risk

Researchers funded by the National Institutes of Health have linked abnormal patterns of certain metabolites in infant blood samples to a higher risk of sudden infant death syndrome (SIDS). Although further research is needed to confirm the results, the authors say that the findings could potentially lead to ways to screen infants at risk of SIDS and help identify its causes.

The study was conducted by Chad M. Aldridge, D.P.T., MS-CR, Keith L. Keene, Ph.D., Fern R. Hauck, M.D., M.S., and colleagues at the University of Virginia. It appears in *eBioMedicine*. Funding was provided by NIH's Eunice Kennedy Shriver National Institute of Child Health and Human Development and the National Institute on Deafness and Other Communication Disorders.

SIDS is the sudden, unexplained death of an infant younger than one year of age that remains unexplained after a complete investigation, including an autopsy, a death scene review, and complete family and medical histories.

To help identify potential causes and risk factors for SIDS, researchers are leveraging scientific and technological advances. For



example, metabolomics is the study of chemical processes involving metabolites, which are small molecules that play a role in metabolism. By using the latest analytical and computational techniques, researchers can identify patterns of

metabolites in tissue samples and check if these patterns are associated with SIDS. However, prior studies conducting metabolomic analysis of SIDS cases were small, and their results have not been confirmed by larger studies.

For the current study, researchers conducted a metabolomic analysis on blood samples from 300 infants, including 195 classified as SIDS cases and 105 classified as other causes of death.

The researchers identified higher concentrations of certain metabolite biomarkers in samples from infants who died of SIDS, compared to samples from the other infants. These included metabolites involved in nitrogen metabolism, lipid and fatty acid metabolism, stress response, nerve cell communication, hormone regulation, and the body's ability to detoxify free radicals (unstable oxygen compounds).

"The results of this study are very exciting. We are getting closer to explaining the pathways leading to a SIDS death," said the study's senior author, Dr. Hauck. "Our hope is that this research lays the groundwork to help identify—through simple blood tests—infants who are at higher risk for SIDS and to save these precious lives."

The authors cautioned that more research is needed to determine if the metabolite patterns discovered in the study contribute to SIDS.

Learn more at nih.gov.

Scientists Pioneer Promising Treatment for Cancer Pain

RTX is a non-addictive pain therapy derived from cactus-like plant

National Institute of Health (NIH) scientists have reported that a first-in-human clinical trial of a new therapy based on the plant-derived molecule resiniferatoxin (RTX) shows that it is a safe and effective agent for pain control in patients with intractable cancer pain.

Researchers tested a single injection of small quantities of RTX into the lumbar cerebral spinal fluid (by lumbar puncture) of advanced-stage cancer patients and found that it reduced their reported worst pain intensity by 38% and their use of pain-relieving opioids by 57%.

"The effects are immediate," said Andrew Mannes, M.D., lead study author and chief of the NIH Clinical Center Department of Perioperative Medicine. "This is a potential new therapy from a new family of drugs that gives people with severe cancer pain an opportunity to return some normality to their lives."

The trial enrolled research participants with terminal end-stage cancer who were among the 15% of cancer patients unable to find pain relief from standard of care pain interventions, including vast quantity of opiates without relief.

A single injection of RTX provided patients durable relief. Patients' need for pain-relieving opioids declined sharply, and their quality of life improved. They no longer needed to spend significant periods being sedated with opioids and after treatment were able to reengage with their family, friends and communities.

The NIH scientists believe RTX has potential to treat many other pain conditions, including other types of cancer pain, chronic pain from nerve injuries called neuromas, post-surgical pain, a facial pain condition called trigeminal neuralgia, and chronic oral inflammatory prob-

'This is a potential new therapy from a new family of drugs that gives people with severe cancer pain an opportunity to return some normality to their lives.'

ANDREW MANNES, MD
NIH Clinical Center Department
of Perioperative Medicine



lems following head and neck radiation therapy.

"Targeting specific nerves brings many pain disorders into range of RTX and allows physicians to tailor the treatment to the patient's pain problem. This interventional approach is a simple path to personalized pain medicine," said senior study author Michael Iadarola, PhD, a senior research scientist in the NIH Clinical Center Department of Perioperative Medicine.

RTX is not addictive and doesn't cause a high. Instead, it prevents pain signals from reaching the brain by inactivating a specific sub-group of nerve fibers which transmit heat and pain signals from damaged tissue. RTX is an activator of the transient receptor potential vanilloid 1, or TRPV1 ion channel and a super-potent equivalent of capsaicin, the active molecule in hot peppers. The ability of RTX to open the channel pore in TRPV1 allows an overload of calcium to flood into the nerve fiber and block its ability to transmit pain signals.

"Basically, RTX cuts the pain-specific wires

connecting the body to the spinal cord, but leaves many other sensations are intact," Iadarola said. "These TRPV1 neurons are really the most important population of neurons that you want to target for effective pain relief."

Iadarola's contributions have led decades of basic science research into the neurobiology of pain and pain control. That body of research has informed them that to effectively block pain, you must block it from getting into the spinal cord and from there having it leave the spinal cord to transit to the brain, where we perceive pain.

Unlike other current approaches that use heat, cold, chemicals, or surgery to non-selectively interrupt nerves to stop pain, RTX targets the specific sensory pathways of tissue damage pain and heat. Other sensory pathways, such as touch, pin prick, pressure, muscle position sense (known as proprioception), and motor function, remain intact. It is not a generalized numbing as occurs with local anesthetics.

"What makes this unique from all the other things that are out there is this is so highly selective," Mannes said. "The only thing it seems to take out is heat sensation and pain."

RTX is derived from the *Euphorbia resinifera* plant, a cactus-like plant native to North Africa. *Euphorbia* extract has been known for 2,000 years to contain an "irritant" substance, which NIH scientists identified how to use for patients through basic research on living cells observed through a microscope. Adding RTX to TRPV1-containing cells caused a visible calcium overload, which Iadarola and Mannes eventually translated into an early-stage human clinical trial.

The next steps include additional, larger clinical trials to move RTX toward eventual approval by the US Food and Drug Administration and clinical availability.

Learn more at nih.gov.