

CUSTOM CONTENT

JULY 29, 2024

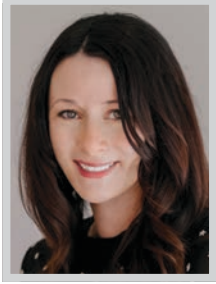
WOMEN OF INFLUENCE: ACCOUNTING



Welcome to the 2024 edition of the Los Angeles Business Journal's special section honoring the LA region's most influential women financial services professionals, Women of Influence: Accounting.

Methodology: The professionals featured in these pages did not pay to be included. Their profiles were drawn from nomination materials submitted to the Los Angeles Business Journal. Those selected for inclusion were reviewed by the editorial department and chosen based on a demonstration of impact made on the profession and on the Los Angeles community.

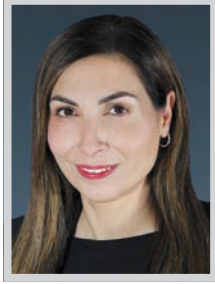
WOMEN OF INFLUENCE: ACCOUNTING

**BRIDGET AHERN**

Partner
Ernst & Young LLP

Bridget Ahern is an experienced leader with a demonstrated history of working with clients to develop innovative solutions that manage cross-functional mobility risk. She is skilled in mobility, business travel, and remote work risk mitigation and program management. Ahern is a leader in EY's People Advisory Services Tax practice, having extensive experience supporting companies with compliance as they grow internationally.

In the past three years, and in the midst of the COVID-19 crisis, Ahern spearheaded and developed EY's approach to helping companies build compliant programs around remote working, creating sustainable and scalable solutions for all shapes and sizes of companies. She has also helped develop innovative technology to help drive compliance and enhance employee experience in the remote work and business travel space. On top of this, Ahern co-leads EY's Entrepreneur Of The Year Greater Los Angeles program, which recognizes business leaders of high-growth companies.

**CLAUDIA BASSETT**

Partner
CohnReznick LLP

In 2023, Claudia Bassett achieved her most successful career accomplishment to date: making partner at CohnReznick in the firm's National Assurance practice. Bassett started her career in public accounting about 20 years ago. Throughout her career, she has focused on continuously learning and improving her technical capabilities. In 2015, Bassett joined CohnReznick as an engagement quality control reviewer for a variety of clients and industries. Over the following decade, her role expanded to include her being a learning and development instructor and content developer, both internally and externally. She worked on a variety of large-scale projects focused on audit efficiency and effectiveness that had an impact throughout her firm's audit practice.

In addition, Bassett is a frequent presenter on accounting topics and has published numerous technical accounting articles. Her perseverance and willingness to accept challenging assignments has made her stand out in her profession.

**SANDRA BURNS**

Partner
Ernst & Young LLP

Sandra Burns is a partner in EY's Real Estate, Hospitality and Construction assurance practice and has 24 years of experience providing audit and accounting services to a wide range of companies in the real estate, private equity and leasing industries. Burns is a trusted business advisor to clients with numerous capital transactions, including initial public offerings, mergers and acquisitions, divestitures, securitizations, secondary equity and debt offerings, as well as routine SEC filings and reporting. Burns has also led Sarbanes-Oxley Section 404 internal control implementations for newly formed public companies.

As an audit partner for 11 years, Burns has led audits of public and private companies in various industries. Burns was a resident in EY's West Region Professional Practice Group, serving as a firm-wide and area resource on technical accounting and auditing matters, focusing on the areas of impairment, financial instruments and fair value accounting.

**CHERYL CALHOUN**

Managing Director
CBIZ & MHM

A managing director at CBIZ & MHM Los Angeles, Cheryl Calhoun brings more than 35 years of experience and expertise to all facets of the entertainment industry. She represents talent, production companies, entertainment service companies, media service companies, publishing companies and executives in varied tax and business matters. Calhoun is also a co-leader of CBIZ's Multi-Family Office and Virtual Family Office Practices. In an effort to support and grow the future leaders of CBIZ & MHM, Calhoun has signed on as a coach of the 2024 Class of the Emerging Managing Directors Academy.

Calhoun champions the mission of organizations she supports by building strategic relationships and ensuring that the partnerships are in the best interest of each organization. She was recently named chair of the Board of Directors of the American Lung Association, an organization she's worked with for more than 15 years.

**BABETTE CAMPBELL**

Partner
Armanino LLP

Babette Campbell is a newly promoted partner at Armanino. She works with ultra-high-net-worth individuals and their families on all aspects of their lives, including asset acquisition, reporting and budgeting, investment and estate and tax planning. Campbell works in collaboration with a network of outside advisors, including attorneys, insurance and investment advisors and other family wealth specialists to serve her business management/family office clients. She cares for her team, clients, colleagues, and works hard to make people's lives better.

Campbell is seen as someone who does things with excellence, gives clients peace of mind, and helps her team grow and learn continuously. She is an advocate and is not afraid to roll up her sleeves to make sure things are done in a fair and just way. She serves in Armanino's The Bridge, and has encouraged many other women in the firm to embrace leadership roles.

**ANITA CHAN**

Partner
KPMG

Anita Chan is an audit partner at KPMG with over 16 years of experience in auditing large public and private entities across various industries including consumer products and banking. Chan also delivers sustainability reporting and attestation services to clients, for both voluntary and regulatory purposes.

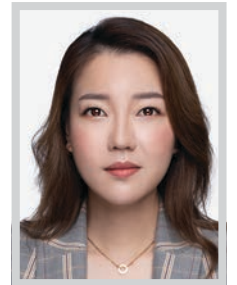
Chan recently completed a rotation in KPMG's National Office focusing on complex audit methodology and technical accounting matters. Immediately prior, Chan was a professional accounting fellow within the Office of the Chief Accountant at the US Securities and Exchange Commission from 2020 through 2022. During that time, Chan was an active member of the rulemaking team that drafted the Enhancement and Standardization of Climate-Related Disclosures for Investors proposal. She is also the USC Audit lead recruiting partner, KPMG Network of Women (KNOW) Los Angeles Board co-lead, member of the USC Leventhal Board of Councilors and mentor for the USC Career Advantage Program.

**DEBORAH CHAN**

Tax Principal
BDO USA, P.C.

Debbie Chan has solidified her reputation as a top accounting professional in Los Angeles, with nearly 30 years of experience developing and implementing essential tax compliance and consulting services for her clients. Chan's purposeful approach to accounting and emphasis on client relationship building has made her an indispensable resource for the high-net-worth individuals she serves.

In 2022, Chan joined BDO as a principal in the Private Client Services group in the firm's Los Angeles office. She is laser-focused on helping her clients overcome the potential tax risks they face and identifying opportunities for them to grow. Her experience includes federal and state tax planning and compliance, IRS and state audit support, merger and acquisition transaction support, and international tax filing issues. Chan's commitment to strong relationships extends to her PCS team, which she has focused on growing into a robust practice since joining the firm.

**EVONNE CHEN**

Tax Partner, Technology & Services
Forvis Mazars

Evonne Chen has more than ten years of experience in public accounting delivering corporate tax compliance and consulting services to a wide range of industries including technology, media, and telecommunications, manufacturing, and services. She leads the growth of the tax practice in Los Angeles and collaborate with other practice leaders to identify and cross-sell value-added services to existing clients as well as new market opportunities. She also handles all aspects of corporate tax work, including assisting large multi-national corporations with international, US domestic and multi-state tax filings.

Chen's expertise has added depth to Forvis Mazars tax capabilities in the Los Angeles market. She actively contributes to the firm's "Let's Talk Tax" webcast series, and she is passionate about mentoring junior professionals on how to provide superior services to clients. She also volunteers at the Asian Youth Center where she serves on the audit committee.

**You're not some
humdrum number
cruncher.**

**We're not your
typical professional
association.**



Our members aren't just mathematicians—they're the architects of understanding. Curiosity drives us. We challenge traditions, forging new paths. Advocates of positive change, we uncover hidden truths in numbers, spotting what's invisible to others. We value life beyond the desk and believe in charting your course upward. The future of accounting is anything but "by the numbers."

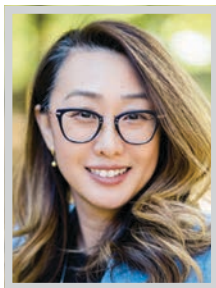
So if you think outside the ledger, come join us. We're the new CalCPA.

**The members club for California's CPAs
and financial professionals.**



calcpa.org

WOMEN OF INFLUENCE: ACCOUNTING

**PING CHOI**

Tax Partner
Deloitte

Ping Choi has over 24 years of experience in US taxation and has been with Deloitte for over 22 years. Her industry knowledge includes investment management and real estate. Her client experience includes public and private corporations, operating and investment partnerships, Real Estate Investment Trusts, UPREITs, Taxable REIT Subsidiaries, S-corporations and high net worth Individuals where she's provided tax compliance services and consulting services including, ASC 740 assistance, tax planning and restructuring, structural designs and transactional consultation.

Choi's experience also includes private equity funds, investment advisors, broker-dealers, fund of funds, open and closed-end funds and institutional investors within the investment management industry. Choi has also made significant contributions around DEI, including her leadership in firm initiatives around Deloitte's women and underrepresented professionals. Choi is also known as a strong mentor and leader to professionals within Deloitte.

**ENZA COHN**

Managing Director
Gelfand, Rennert & Feldman LLC

Over the course of her 36-year accounting career as a CPA, Enza Cohn, a managing director of Gelfand, Rennert and Feldman (GR&F), has had an impressive career journey. Starting as an IRS Agent to then leading the GR&F tax division, through hard work and perseverance she earned her reputation as an esteemed and successful business manager for individuals in the entertainment industry and clients in the ultra high net worth arena.

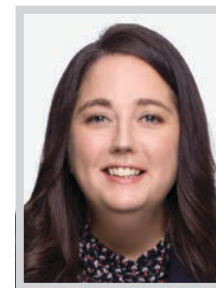
By communicating, managing, and understanding her clientele, Cohn continues to aid them and their families as their personal "CFO." This includes preparing and analyzing their cash flows and budgets, directing them through tax strategies, and in partnership with estate attorneys, has worked to create estate plans with the goal of maintaining her client's family's wealth. Cohn helps to groom her team by sharing her experiences and expertise. She also leads intern seminars to help them grow within the firm.

**JESSIE DIBLE**

Partner
Lucas Horsfall Murphy Pindroh, LLP

Jessie Dible stands as a visionary in finance and education, celebrated for her transformative leadership and razor-sharp intellect. As an esteemed adjunct professor at Loyola Marymount University, she not only imparts profound insights into corporate taxation to graduate students but also shapes the future of accounting professionals with her forward-thinking approach. Dible's dedication to mentoring and community-building underscores her commitment to nurturing excellence in her field.

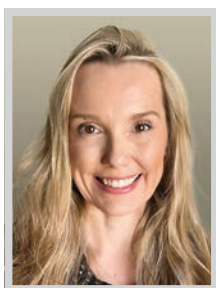
With dual Master's Degrees in Business Taxation and International Business Administration, Dible excels as a CPA, specializing in tax preparation, income tax, financial accounting, auditing, and projection analysis. Known for her strategic foresight and agility, she navigates complex tax landscapes with unparalleled acumen. Actively engaged in the Organization of Women Executives, Dible drives empowerment through advocacy and mentorship, inspiring women to achieve new heights. Dible's unwavering dedication makes her an exemplary woman of influence in her profession.

**ALANNA DIBLE**

Assurance Partner
Forvis Mazars

Alanna Dible started her career at Mazars in Edinburgh, Scotland and 15 years later is an assurance partner and one of the founding members of the Los Angeles Forvis Mazars office. One of her proudest achievements is helping grow the office from four employees to 50 in just six short years.

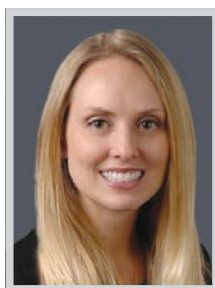
An expert in providing audit and accounting services for middle market and publicly traded multinational companies in the United States and Europe, Dible specializes in commercial products, many of which include beauty brands that are household names. She also serves clients in the hospitality and food and beverage industry, as well as the technology sector. Dible leads attest engagements under US GAAP and IFRS, preparing financial statements and presenting findings to improve internal control efficiency and risk management. Dible is a chartered accountant with the Institute of Chartered Accountants, Scotland and a CPA in California.

**KERRA DIENER**

Partner
Withum

Kerra Diener was recently promoted to partner at Withum as result of her dedication to her clients, passion for accounting, and leadership qualities. She serves corporate clients with accounting for income taxes, tax planning and tax compliance, and assists multi-national and multi-state business entities including distributors, retailers, and wholesalers.

Diener is an exceptional certified public accountant with far-reaching experience. She manages and consults on various tax topics for businesses and individuals including state income tax nexus, research and expenditures, 704(b) capital account maintenance, federal and state tax credits, and like-kind exchanges. She also has expertise in federal and state tax examinations, insolvency tax, and planning for debt restructuring, reorganizations, and liquidations. Diener is Withum's local 'go-to' expert in many of these areas. Over the last couple of years, Withum has recognized Diener with multiple awards for moving mountains to complete client projects and deliver exceptional client service.

**STACIE DROEGE**

Senior Manager, Assurance Services
RSM US LLP

Stacie Droege is a senior manager at RSM US LLP's Los Angeles office, where she has dedicated over a decade to providing top-tier assurance and risk management services to both public and privately held companies. Her extensive expertise lies in auditing financial services companies, including registered investment advisors, private equity funds, hedge funds, commodity pools, fund of funds, and small business investment companies.

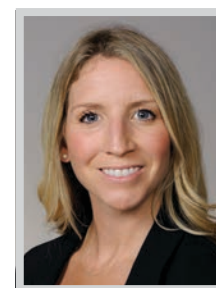
Before transitioning to the Los Angeles office, Stacie spent nine years in RSM US' Chicago office, where she developed a skill set in managing complex audits and assurance engagements. In her role as senior manager, Droege is responsible for overseeing the completion of engagements, training and developing staff, and serving as a technical resource for her clients. She has also played a crucial role in developing and presenting financial services and alternative investment trainings.

**KAYO M. ELKNER**

Principal
Prager Metis International

Kayo M. Elkner is a principal in the Accounting and Tax Departments of Prager Metis, a member of Prager Metis International Group, and an accomplished CPA with over 20 years of experience in the accounting industry. Elkner specializes in providing accounting and tax services to individuals and closely held businesses. She has prepared individual, corporate, S corporation, and partnership income tax returns for clients in the US and internationally, including Japanese clients headquartered in Hawaii and California. Elkner is fluent in Japanese and is a member of Prager Metis' Japan group.

Elkner has demonstrated versatility and grace under pressure in her role at Prager Metis. She guides the Nagano Morita Division of Prager Metis to help bridge cultures between the United States and Japan. Fluent in Japanese, she is a member of Prager Metis' Japanese Global Services Group, where she advises Japanese American businesses.

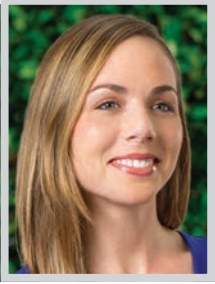
**JANE GOODMAN**

Partner
Ernst & Young LLP

Jane Goodman is a Los Angeles-based audit partner with the Ernst & Young LLP Financial Services Wealth & Asset Management practice. She has two decades in the financial services industry in EY's offices in New York, San Francisco and Los Angeles. Goodman is a member of the American Institute of Certified Public Accountants and is a certified public accountant in both New York and California. Prior to her time at EY US, Goodman spent time at the US Securities and Exchange Commission in the Division of Investment Management. Professionally, throughout her career with EY US, Goodman has served public and private asset management clients.

Goodman specializes in private equity and private credit, and she also has experience with registered funds, real estate funds and REITs, broker dealers, energy-focused funds and venture capital. In addition to her professional obligations, Goodman is a champion for diversity, equity and inclusion.

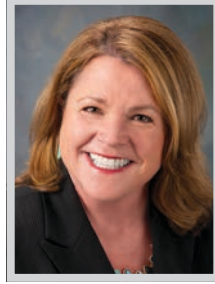
WOMEN OF INFLUENCE: ACCOUNTING



FRANCES ELLINGTON GUTIERREZ
Partner
GHJ

Frances Ellington Gutierrez, DBA, CPA, is a partner and the State and Local Tax Practice leader at GHJ. Her leadership has not only driven significant growth for the State and Local Tax Practice but has also positioned GHJ as a leading firm and established Frances as a leader in the accounting industry.

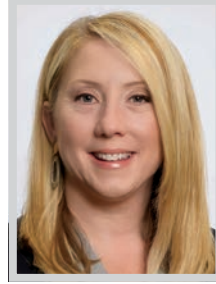
Gutierrez provides expert guidance on tax audit controversy, nexus and reporting requirements and state tax planning initiatives. She specializes in multistate income and franchise tax, indirect tax and credits and incentives. Her leadership has driven innovation and excellence within the practice. She brings over 10 years of state and local tax experience with Big Four and multinational corporations, including international rotations in Hyderabad and New Delhi, where she provided training and development to team members in India. This experience has been instrumental as GHJ has grown to become a national firm with clients around the world.



CORAL HANSEN
Managing Director
B. Riley

Coral M. Hansen, CPA, ABV, CFF, CFE, is a managing director with B. Riley Advisory Services, and has nearly 30 years of combined public accounting and private industry experience. Hansen is experienced in consulting with clients and counsel in regard to complex business disputes involving the investigation, evaluation and quantification of economic damages.

Hansen has also performed hundreds of analyses involving fraud investigation, business valuation, breach of contract, shareholder and partnership disputes, account tracings, contract analysis and has provided consulting services to businesses pertaining to best practices. Hansen has been qualified as an expert and testified in Superior, Federal and US Bankruptcy court cases. Prior to joining B. Riley, Hansen spent 14 years with one of the top ten national accounting firms where she was a managing director in its Corporate Restructuring & Litigation Support practice. Hansen began her career with Ernst & Young.



MELISSA HARMAN
Partner
Moss Adams

Melissa Harman's career is defined by transformative leadership and unwavering commitment to excellence. One of her most notable achievements is the development of the Moss Adams Southern California Not-for-Profit Practice, which she nurtured from its inception in 2001, to a thriving practice boasting over 200 professionals many of whom she brought into the fold. This accomplishment underscores her strategic foresight, meticulous planning, and steadfast leadership, elevating her to the forefront of her field and transforming what was once a vision into a thriving reality.

Over six years, Harman led the firm-wide Not-for-Profit Practice, honing her skills in guiding diverse teams towards shared objectives, fostering innovation, and delivering exceptional client service on a broader scale. A standout leader, Harman provides personalized support and opportunities for her team's growth. Renowned for her communication skills, she engages clients effectively, turning mundane discussions into captivating exchanges.



MARLA HUMMEL
Partner
Grant Thornton

In a career spanning three decades and five cities, Marla Hummel has carved out a niche as a preeminent accounting leader. Her passion and knowledge of the nonprofit industry is remarkable — and has led her firm to rely upon Hummel for major clients across the country.

Hummel was asked to relocate to New York to take the lead on an account that was vital to her firm's not-for-profit practice. She was also asked to help open the firm's Phoenix office, which was the first time Grant Thornton opened an office in a new market without acquiring another firm. Finally, Hummel's expertise brought her to Los Angeles, where she has used her nonprofit and government knowledge to continue landing and supporting major clients. She has used her ever-expanding skill set to make a difference for not-for-profit clients across the country.

LUCAS HORSFALL
Accountants and Advisors



Congratulations to Jessie Dibie and Leslie Sobol on being chosen for the Los Angeles Business Journal's **Women of Influence: Accounting** list.

With a **68%** female employee base, Lucas Horsfall is proud of our track record of helping women excel and reach their **highest potential**.

WOMEN OF INFLUENCE: ACCOUNTING

**CATHY HYODO**

Managing Partner
Grant Thornton

Cathy Hyodo is the longtime leader of Grant Thornton's Los Angeles office. Over the course of a near 30-year accounting career, she has helped the firm achieve ongoing growth in her city and throughout the country. She has helped tech start-ups and Fortune 100 companies achieve their own widespread success by knowing how to navigate current and future challenges. She is also deeply invested in supporting the next generation of accountants. She serves on multiple advisory boards for USC, and in these roles, she helps shape policies and programs that develop agile graduates.

Hyodo predicted that SPACS would gain traction in the marketplace. She created a SPAC alliance that brought ample new business to Grant Thornton and provided those clients with the in-depth knowledge they needed. She has developed similarly strong specialties in a range of ever-evolving fields, including digital media, e-commerce, software and software-as-a-service.

**MALVE ILDEFONSO**

Assurance Principal
BDO USA, P.C.

Malve Ildefonso is one of California's top public accountants in alternative investing, and has built a reputation over 20 years for delivering audits of the highest quality and serving as a trusted business advisor for fund managers. Ildefonso joined BDO in 2018 as an assurance principal in BDO's Los Angeles office. Her track record contributed to her quickly being named the leader of BDO's Southern California Asset Management group.

Ildefonso's responsibilities and experiences include leading several audit engagement teams in serving clients across a broad spectrum of public and private companies, such as public advisors, registered funds, private equity funds, broker dealers and employee benefit plans. Likewise, she leverages her technical expertise in fair value market-based measurements for clients, financial statement disclosures, SEC filings, financial reporting and more to target client growth opportunities for the larger LA assurance practice and BDO's management group as a whole.

**TOMOKO JIMBO**

Tax Senior Manager
RSM US LLP

Tomoko Jimbo is a senior manager in tax services at RSM US LLP's Los Angeles office, where she has over 19 years of accounting and finance experience. Jimbo provides business tax compliance, income tax provision, and advisory services to a diverse range of clients. Her work spans publicly traded and privately held companies, multinational corporations and middle market firms across various industries, including retail, consumer products, manufacturing, technology, media and entertainment, and restaurant and franchising.

Prior to joining RSM in 2021, Jimbo spent most of her career with a Big Four firm, where she honed her skills and developed expertise in serving both corporations and pass-through entities. Her primary focus was on middle-market outbound and inbound corporations, tackling cross-border issues and business combinations. Jimbo was responsible for managing teams that assisted with due diligence, restructuring, and M&A activities, as well as representing clients in income tax examinations.

**SHEENA LAM**

Partner
KPMG

KPMG's Sheena Lam is an audit partner with over 20 years of experience auditing companies from emerging growth private companies to multinational public issuers. Lam has a special focus on the media and entertainment industry and also serves as the engaging market leader for the media industry for the Pacific Southwest region of the firm.

Additionally, Lam serves as a SEC reviewing partner delegate since 2022 and is an Audit Quality Support Network partner. Lam has also worked on technical accounting and audit matters at KPMG's Department of Professional Practice and served as a professional accounting fellow at the US Securities and Exchange Commission. Lam is passionate about diversity, equity and inclusion and serves as an advisory board member on KPMG's Asian Pacific Islander Business Resource Group. As part of that national group, she leads the mentoring program of 200-400 professionals per year.

CBIZ | MHM
TAX | ACCOUNTING | ADVISORY

Congratulations Kelly O'Neil & Cheryl Calhoun

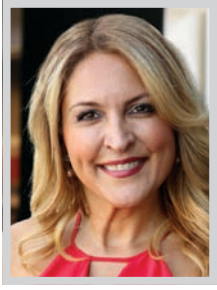
on being recognized as two of the

Los Angeles Business Journal 2024 Women of Influence: Accountants

Kelly O'Neil, Managing Director
Cheryl Calhoun, Managing Director



WOMEN OF INFLUENCE: ACCOUNTING



PAM MALEK

Co-President, Colony Business Management
The Colony Group

The Colony Group's Pam Malek, CPA is the first female managing director in the firm's California offices – nationally recognized specializing in business management, tour accounting, and royalty and publishing services for musicians, actors, writers, TV personalities, studio executives, digital influencers, and high-net-worth individuals. Prior to joining The Colony Group through a strategic decision, she was a managing director at her previous firm. Her and her team's expertise have contributed to the deep relationships they have established in the entertainment industry and also with entrepreneurs and other successful individuals and families.

Malek spends her day-to-day providing domestic and international tax advisory and accounting services to clients in the entertainment industry with an emphasis on worldwide tours and tour budgeting. She also represents clients in evaluating their publishing and master recording catalogues to help maximize their value in a sales transaction.

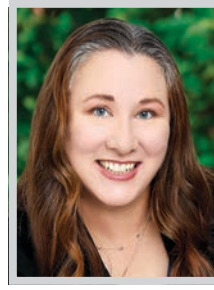


JENN McCABE

Partner, Consulting and Business Outsourcing Services
Armanino LLP

Jenn McCabe has been a pioneering force in the outsourcing industry for over 25 years, establishing her own firm during a time when outsourcing was a novel concept. Often credited with innovating outsourced finance and managerial accounting practices, she transformed traditional "book-keeping" into a sophisticated service model. Her entrepreneurial journey culminated in the successful growth of her firm, which garnered acquisition interest from multiple companies, ultimately leading to its integration into Armanino.

At Armanino, McCabe holds prominent leadership roles, spearheading the Business Outsourcing Practice in the Southern California Geographic group. She is recognized as a trailblazer in the professional services niche and plays a pivotal role on the firm's B Corp certification committee, emphasizing her commitment to corporate social responsibility. Additionally, McCabe contributes her expertise to the firm's 401k committee, ensuring robust financial planning and management for employees.



GINA McLEOD

Partner
GHJ

Gina McLeod, J.D., LL.M., is GHJ's Tax Practice leader and has over 20 years of public accounting experience spanning multiple industries, including entertainment, food and beverage, manufacturing and distribution and media and advertising. McLeod joined GHJ in 2023 and became GHJ's Tax Practice leader in 2024. Her expertise and leadership have driven innovation and excellence within the Tax Practice to support the team as it continues its exponential growth and national expansion.

Prior to joining GHJ, McLeod was a partner at Deloitte. Her tenure equipped her with deep industry knowledge and a wealth of experience, which she now brings to GHJ. McLeod's tax services have benefited clients across various industries, including entertainment, food and beverage, manufacturing and distribution and media and advertising. Her versatility and comprehensive understanding of these sectors enhance GHJ's ability to serve a wide range of clients.



SHEILA MOGHIMI-KAMRAN

Partner
Citrin Cooperman Advisors, LLC

Sheila Moghimi-Kamran is a partner in Citrin Cooperman's West Los Angeles office. She has more than 25 years of experience in public accounting, including international firm experience in the areas of tax compliance and planning for high-net-worth individuals and their related entities. In recent years, Moghimi-Kamran has focused on working with women during times of transition. During her career, she has seen many life events affecting women, such as starting and winding down a business, marriage, divorce, becoming a widow, retirement, and planning for children and grandchildren.

Knowing that it is important for women to feel supported and receive guidance from trusted advisors, particularly during times of transition, Moghimi-Kamran works to create peace of mind for all the clients she serves. Whether in or out of the office, Moghimi-Kamran takes great interest in connecting with people and cultivating long-lasting, meaningful relationships.



**Outstanding leadership.
Exceptional results.**

At KPMG, we never underestimate the power of dedicated people. That's why we want to recognize Sheena Lam and Anita Chan for their outstanding contribution to the accounting profession. You've exceeded expectations. And made a positive impact in the lives of so many.

kpmg.com/us



WOMEN OF INFLUENCE: ACCOUNTING

**MELISSA MORTON***Managing Director*

Gelfand, Rennert, & Feldman LLC

Melissa Morton became the second female managing director at Gelfand Rennert and Feldman, one of the leading business management firms, in 2016. GRF specializes in full-service business management, tour accounting, royalty examinations, contract compliance and valuations, as well as publishing services for musicians, actors, writers, digital influencers and high net worth individuals. Morton and her team have built long lasting relationships in the business management community with her peers and colleagues.

Morton spends her days providing support and advice to her clients and staff with complex tax decisions and everyday business needs. With a very hands-on approach to her clients, Morton is responsible for the business management needs of some of the world's biggest entertainers. With her guidance and mentorship, Morton has created a strong path for the next generation of female business managers.

**VICTORIA MOSS***Partner*

Citrin Cooperman Advisors, LLC

Victoria Moss is a tax partner in Citrin Cooperman Advisors' Woodland Hills office with over 30 years of experience in public accounting. She provides income tax compliance and consulting services to private equity and portfolio asset companies in various industries including real estate, entertainment and media, and professional services.

Moss has worked with asset management clients, including multinational private equity clients focused on energy, consumer products, and real estate funds. She has also worked with entertainment and media clients, and high net worth individuals who founded and/or run the funds. Her experience extends to providing review and advisory services on international and multistate tax provisions. This extensive experience showcases her ability to handle complex tax scenarios, making her a valuable asset to her clients and the firm. Moss has been with Citrin for three years and currently serves as the firm's entertainment, music, and sports industry tax leader.

**TOMOKO NAGASHIMA***Partner*

PwC LLP

Having spent 30 years in the accounting profession, PwC's Tomoko Nagashima has left her mark on the industry. She has taken on numerous roles in leading her practice as an audit partner, including leading as the Southwest Market Assurance leader and the Asset and Wealth Management West Region Practice team leader. She is recognized by clients and team members alike for her technical expertise and steadfastness in addressing challenges around financial reporting.

Nagashima has served or currently serves on a number of boards, including Ascend, the University of California Irvine Center of Investment Wealth Management and the American Red Cross of Los Angeles. She also mentors freshmen through seniors attending the University of California Irvine through the First Tee Program.

**LILIT NERSISYAN***Principal*

Withum

Lilit Nersisyan is a principal in Withum's Los Angeles Office with over 12 years of experience working with clients in the financial services industry. She specializes in financial reporting, GAAP, GAAS, and Alternative Investment Audits. Nersisyan began her career at KPMG and joined Withum in July 2023. In her current role, she supported the expansion of Withum's Financial Services niche when Withum opened on the West Coast. She has helped build up the national practice by connecting East and West Coast teams, expanding regional clientele and training new hires.

Nersisyan's key achievements since joining Withum 12 months ago include creating a streamlined audit process and designing effective internal control processes for team members to follow; and establishing a close relationship with Withum's leadership on the East Coast to ensure clients and fund administrators are matched to the best personnel for their specific needs.

Congratulations! Lori A. Roth & Kayo M. Elkner

We are proud of *your*
spotlight in
2024 Leaders of Influence:
Women in Accounting in the
Los Angeles Business Journal



PragerMetis
Advisors & Accountants

ADVISORY | AUDIT & ACCOUNTING | BUSINESS MANAGEMENT | TAX |
TAX CONTROVERSY | INTERNATIONAL

NORTH AMERICA | EUROPE | ASIA
PRAGERMETIS.COM

WOMEN OF INFLUENCE: ACCOUNTING



PATTY O'CONNELL
Chief Operating Officer
HCVT

With over 35 years of experience under her belt, Patty O'Connell initially served as a tax professional working with closely held private businesses and high net worth individuals and their related entities. While in her role working as a tax partner, the need for a chief operating officer arose, and O'Connell stepped up.

As a tax partner and now COO, O'Connell has made a tremendous impact on the overall state of the firm. She leads all strategic and operational initiatives at the firm, many of which have been transformational to the organization. As a member of the firm's Executive Committee, the advisory board of HCVT's Diversity, Equity, and Inclusion (DEI) Committee, Community Service Committee, and the Women's Initiative Committee, O'Connell has overseen and driven much of the firm's progress. In the firm's Executive Committee, O'Connell is a key decision maker, working closely with the firm's senior leadership.



BECKY YANG O'MALLEY
Managing Director
B. Riley

Becky Yang O'Malley, managing director, B. Riley Advisory Services, is a certified fraud examiner with 20 years of consulting experience in providing forensic accounting, finance and economic analyses for civil and criminal litigation matters and fraud investigations, including breach of contract, class actions, partnership disputes, fraudulent conveyances, alter-ego issues, and misappropriation of assets.

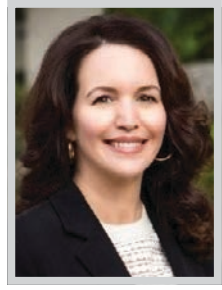
Having been involved in numerous engagements, O'Malley is knowledgeable in a wide range of industries including construction, real estate, manufacturing, healthcare, financial institutions, and entertainment. O'Malley has extensive experience conducting reactive investigations, proactive compliance engagements, and shadow investigations for public and private companies and not-for-profit entities, involving issues such as allegations of financial fraud, corruption, misappropriation, and employee misconduct. Her experience in this area includes leveraging sophisticated data analytics techniques in order to analyze large volumes of data.



KELLY O'NEIL
Lead Managing Director
CBIZ & MHM

Kelly O'Neil, CPA, stands as a beacon of leadership and expertise in the accounting field. As lead managing director at CBIZ MHM, LLC, and shareholder at Mayer Hoffman McCann P.C. (MHM), she brings over 20 years of experience to the table. Additionally, O'Neil serves as the leader of Private Equity for the West Coast. Her focus lies in providing top-notch audit and attest services to companies across various industries, with a notable emphasis on those backed by private equity and venture capital firms. She specializes in revenue recognition, purchase accounting, accounting for stock-based compensation, equity and debt instruments, and derivatives accounting.

O'Neil is a member of the California Society of CPAs, the American Institute of CPAs, and the Association for Corporate Growth. She is an executive board member of CBIZ Women's Advantage, where she directs the development of female professionals through focused leadership, mentoring, and networking.



HARRIET OBERMAN
Partner
SingerLewak

Harriet Oberman is an accomplished professional with an impressive educational background. She graduated from Southwestern University in Georgetown, Texas, with a Bachelor of Science in Biology and a minor in Mathematics. In addition, she holds an MBA from the Anderson School of Management at UCLA, demonstrating her dedication to her career. Oberman is a well-respected member of the California Society of CPAs and the American Institute of Certified Public Accountants. She is also an active member of the Rotary Club of Conejo Valley, and is involved with various philanthropic activities. She also serves as a mentor to executive MBA students, highlighting her passion for nurturing the next generation of professionals.

Oberman has worked with SingerLewak since November 2023 and has quickly proved herself as dedicated to the team and an invaluable partner always looking for ways to engage and provide the clients with the utmost impeccable service.



Leaders in Professional Services & Industry Insights

CONGRATULATIONS!

Citrin Cooperman is proud to recognize our accomplished partners, Laura Stone, Sheila Moghimi-Kamran, and Victoria Moss, on their recognition among *Los Angeles Business Journal's* "Women of Influence in Accounting."



LAURA STONE
Partner



SHEILA MOGHIMI-KAMRAN
Partner



VICTORIA MOSS
Partner

"Citrin Cooperman" is the brand name under which Citrin Cooperman Advisors LLC and Citrin Cooperman & Company, LLP, independently owned entities, provide professional services in an alternative practice structure in accordance with applicable professional standards.



WOMEN OF INFLUENCE: ACCOUNTING

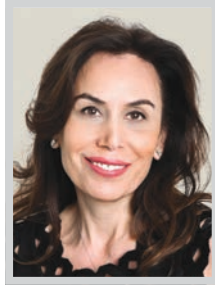


WENDY ON

Co-Managing Partner
Fineman West & Company

Wendy On has more than 20 years of experience serving clients in the consumer products, real estate, manufacturing, biotech, technology and entertainment industries. From inbound and outbound logistics to manufacturing and import/export processes, On provides business and tax planning strategies and share best practices in the industry to help companies achieve their financial goals.

On is fluent in Mandarin and Cantonese Chinese and leads the firm's Chinese practice group. Prior to joining Fineman West, On was with Deloitte for over 10 years where she served as the trusted tax advisor for her clients – both public and privately held. She has deep experience advising clients on business formation and growth strategies; tax structuring and planning; business succession planning; financial planning; obtaining financing; strategic planning; and M&A structuring and due diligence. On has recently performed significant work to expand Fineman West's bookkeeping service.

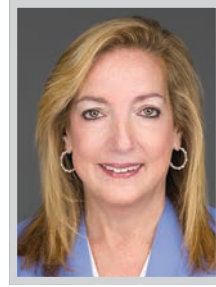


PARNIA PANDKHOU

Partner, Business Outsourcing & Consulting Services
Armanino LLP

Parnia Pandkhou has showcased expertise in interim CFO roles, successfully navigating mergers and acquisitions while integrating corporate cultures and optimizing business functions. She has spearheaded the establishment of business outsourcing services in new, challenging markets, particularly within the real estate and cannabis industries.

Throughout her distinguished career, Pandkhou has achieved notable milestones that emphasize her impact on financial management and corporate growth. She has provided crucial leadership during pivotal transitions, guiding companies through mergers and acquisitions with a sharp focus on enhancing financial stability. As a key member of Armanino's Los Angeles team, Pandkhou has been essential in expanding business outsourcing services into untapped markets, notably within real estate and cannabis sectors. Her foresight and strategic perception have enabled her to identify and capitalize on emerging opportunities, establishing the firm as a leader in financial administration and REIT consulting.



LORI ROTH

Global Managing Partner
Prager Metis International

In January 2021, Lori A. Roth, CPA, ABC, CFF was named global managing partner of Prager Metis. In this role, Roth provides leadership and guidance to partners and team members across all 26 of Prager Metis's offices. She believes in working closely with business owners in a team approach and often adds much-needed depth at the top level to these business owners. Roth is also the only female on the firm's Executive Committee.

In her position as global managing partner, Roth oversees all of the firm's day-to-day operations and provides guidance and oversight to each of the office managing partners and service line leaders. As a member of the firm's leadership team, Roth plays a key role in developing the firm's strategic goals and policies, monitoring performance, and driving business growth. She leads each office to achieve organizational goals while maintaining an environment that is flexible, transparent, and diverse.



JEANNE SAKAMOTO

Partner
SingerLewak

Jeanne Sakamoto is an accountant with 37 years of experience in public accounting. She specializes in delivering audit and other assurance services to foreign-owned domestic corporations and privately held companies. Her extensive experience in auditing and assurance services has equipped her with the expertise to guide her clients through complex financial matters with precision and efficiency. She also provides consulting services on a wide range of accounting matters and reporting issues related to small business development, merger/acquisitions, and expansion.

Sakamoto's unwavering dedication to her clients has earned her a reputation as a trusted advisor and a valuable resource. Her academic credentials and professional achievements are a testament to her unwavering commitment to excellence in her profession. With her expertise in auditing and assurance services, as well as her proficiency in diverse accounting matters, she is an invaluable asset to her clients.



GELFAND, RENNERT & FELDMAN

Congratulations to our esteemed Managing Directors

Melissa Morton & Enza Cohn, CPA

Recognized in LA Business Journal's **2024 Women of Influence: Accounting**

Congrats to all of the honorees!

grfllp.com



WOMEN OF INFLUENCE: ACCOUNTING



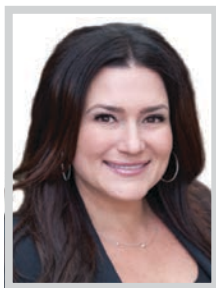
LESLIE SOBOL

Partner

Lucas, Horsfall, Murphy & Pindroh, LLP

Leslie Sobol began her financial career at Laventhol & Horwath, the ninth-largest international CPA firm, where she developed her skills in audit and assurance. She left public accounting to become controller of a multistate, multimillion dollar telecommunications company, but returned to the industry when she joined a local firm where she specialized in tax and consulting. Before joining Lucas, Horsfall, Murphy & Pindroh, Sobol earned her Master of Science in Taxation at CSUN and received a certificate in International Taxation from Golden Gate University.

Sobol utilizes her knowledge and experience to cut through confusing and inadequate information to guide enterprises through difficult transitional phases. Her clients share a common thread in that they are closely held entities, but they span many industries, including services, distribution, manufacturing, and retail. Her achievements include serving on the professional advisory board of the Graduate School of Taxation at CSUN.



LAURA STONE

Partner

Citrin Cooperman Advisors, LLC

Laura Stone brings over 15 years of experience to Citrin Cooperman's Woodland Hills office, specializing in real estate and international tax reporting. Her expertise spans both tax and audit services, advising clients with her strategic and transactional knowledge. Stone's extensive experience includes working with a wide range of clients, from small start-ups to large corporations and high-net-worth individuals. She helps clients develop strategies to mitigate tax liabilities and educates them on tax laws and accounting guidelines.

Previously, Stone was a partner at LGSLLP, one of the largest full-service accounting firms in the San Fernando Valley, which joined Citrin Cooperman in 2020. Her ability to provide comprehensive advice across various services, such as audit and attest, business management, tax compliance, and trust and estate planning, distinguishes her as a versatile and knowledgeable professional. She is known for managing diverse client needs and a commitment to delivering high-quality services.



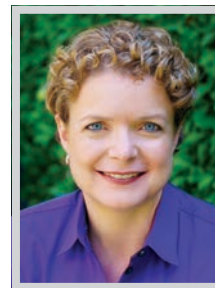
DONNA TIOCAO

Partner

PwC LLP

Donna Tiocao has deep experience as a tax partner working across numerous accounting functions. She worked in public accounting and served as a director of a major entertainment company in industry before returning to public accounting and making partner. Tiocao's expertise makes her a trusted adviser to public and private clients, helping a number of companies prepare for their IPOs and navigate the landscape of mergers and acquisitions.

Tiocao served on the board for the Rediscover Center since 2020. In addition, she also sat on the board of Habitat for Humanity in Los Angeles since 2021. Tiocao cares deeply about addressing the housing crisis in her community and has engaged her colleagues directly to volunteer alongside her to fix homes in Los Angeles.



DONELLA WILSON

Partner

GHJ

Donella Wilson, CPA, leads GHJ's Nonprofit Practice and serves as president and chief philanthropy officer of GHJ Foundation. With a commitment to excellence in both the nonprofit and accounting communities, Wilson has been recognized for her impactful contributions and leadership. She stands out as an exemplary professional whose achievements have significantly influenced her field.

Leading GHJ's Nonprofit Practice, Wilson has driven significant growth and innovation by working alongside many leading charities and foundations in Southern California and helping countless nonprofits achieve their financial goals and maximize their impact. In 2024, Wilson joined GHJ's Executive Committee, further solidifying her role as a key leader as she shapes the future of the firm. Wilson's expertise helped establish GHJ Foundation in 2020, and she has continued to seek new ways to give back. In 2023, GHJ Foundation began a partnership with Groundswell, a platform that gives GHJ employees access to firm-matching funds.

FINEMAN | WEST
& COMPANY

Congratulations to our Co-Managing Partner

Wendy On

for being recognized by the
Los Angeles Business Journal
as a Woman of Influence: Accountants.



AUDIT • ACCOUNTING • TAX • ADVISORY • BOOKEEPING • BUSINESS MANAGEMENT • CFO SERVICES

(213) 688-9898 • fwllp.com