

CUSTOM CONTENT

MAY 27, 2024

WOMEN OF INFLUENCE: ATTORNEYS



WELCOME TO THE 2024 EDITION OF THE LOS ANGELES BUSINESS JOURNAL'S SPECIAL SUPPLEMENT HONORING the region's most influential women legal professionals, *Women of Influence: Attorneys*.

There are some particularly stellar attorneys in Los Angeles who happen to be women and we've alphabetically listed some of the very best of them here, along with details about their careers, practices and relevant recent successes they've achieved.

The women covered in these pages have been recognized for exceptional legal skill and achievement across the full spectrum of responsibility, exemplary leadership as evidenced by the highest professional and ethical standards, and for contributions to the Los Angeles community at large.

Congratulations to the extraordinary professionals included this year and thank you for your contributions to the people and businesses of our region.

Methodology: The professionals featured in these pages did not pay to be included. Their profiles were drawn from nomination materials submitted to the Los Angeles Business Journal. Those selected for inclusion were reviewed by the editorial department. The professionals were chosen based on a demonstration of impact made on the profession and on the Los Angeles community.

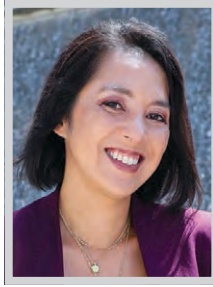
WOMEN OF INFLUENCE: ATTORNEYS



KALLEY AMAN
Shareholder
Buchalter, PC

Kalley R. Aman is a shareholder in Buchalter's Labor and Employment, Litigation Practice Group, and Hospitality, Restaurant, Food and Beverage Practice Group. Aman specializes in employment litigation and counseling, commercial litigation, and complex and class actions. She represents employers in litigation involving claims of employment discrimination, wrongful termination, sexual harassment, retaliation, wage and hour violations, unfair competition, defamation and misappropriation of trade secrets.

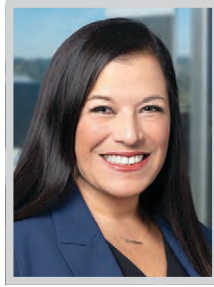
Aman regularly counsels employers on wage and hour compliance, terminations, disciplinary matters, harassment and discrimination complaints, and compliance with federal, state and local laws and regulations. She represents clients across a wide variety of industries.



MARIBETH ANNAGHEY
Managing Partner
Annaghey McCann LLP

As a founding partner of Annaghey McCann, Maribeth Annaghey is an accomplished lawyer with an impressive career. Whether prosecuting breach of contract claims, resolving high-stakes partnership disputes, defending employment claims or working with the media, Annaghey uses her 20 years of litigation strength to customize strategies that resolve each client's unique matter and concerns.

Annaghey's decades of experience at major California firms earned her a reputation as a litigator respected for her impact, civility and creative solutions. Maribeth is committed to upgrading the client-lawyer relationship. She invests time upfront with clients and emphasizes clear and frequent communication throughout her representation. Many of Annaghey's clients are entertainers and public figures.



M. CRIS ARMENTA
Partner
Ellis George LLP

M. Cristina Armenta is a strong, first-chair trial lawyer and has been praised by judges as one of the best trial lawyers, able to simplify a complex case into a compelling story. Her approach to litigation is technical, strategic, outside-the-box, with proper respect for ethics and the rule of law. Armenta is not afraid to push the envelope and takes her position as a zealous advocate seriously.

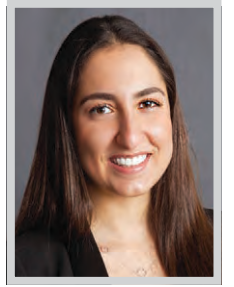
Armenta was the architect of the RICO class action case against Harvey Weinstein and initiated the lawsuit on behalf of over 100 named and unnamed women. Armenta was lead counsel in *Garcia v. Google*, a copyright case concerning the copyrightability of an actor's performance arising from the Benghazi matter.



KERI AXEL
Partner
Waymaker LLP

Keri Axel practices white-collar criminal and government enforcement defense, and civil litigation. A former federal prosecutor and SEC enforcement attorney, Axel is a first-chair trial lawyer who helps clients navigate government investigations and charges and has successfully litigated and argued many Ninth Circuit Appeals. She defends Yasiel Puig, the former Dodgers star.

Additionally, Axel draws on her extensive experience in tax, accounting and the securities industry in representing executives, financial services professionals, and hedge funds in FINRA matters and civil litigation. For the national media, she provides insight into criminal and SEC investigations and in the Elizabeth Holmes Silicon Valley fraud trial.



SAHAR AYINEHSAZIAN
Partner; Chair, Banking and Financial
Services Access Group
Vicente LLP

Sahar Ayinehsazian, a partner at Vicente LLP, has undoubtedly established herself as a pioneer in cannabis banking and financial services. Ayinehsazian has years of experience guiding multi-state operators in the cannabis industry with their expansion into new markets across the US, as well as advising businesses, investors and other law firms on the nuances of executing corporate transactions involving licensed and ancillary cannabis companies.

Ayinehsazian goes beyond simply being a cannabis attorney and adviser. Her accomplishments reflect a unique combination of skills, including the ability to navigate complex negotiations, leverage legal strategies to attract high-profile investors, and a dedication to shaping a more secure and compliant cannabis banking landscape across the nation.



MICHELE BEILKE
Partner
Hunton Andrews Kurth

For more than 25 years, Michele Beilke has represented employers on critical employment topics, racking up notable client successes at both the state and federal levels. A strategic thinker, clients seek her counsel especially when stakes are high in "bet-the-company" litigation. Beilke has extensive trial and arbitration experience including more than six arbitrations in the last two years. She has extensive experience efficiently and effectively litigating single-plaintiff and multi-plaintiff cases, handling state and national wage-and-hour class actions, and discrimination and harassment claims, and counseling clients on critical California employment topics.

Beilke has considerable national jury trial and arbitration experience. She litigates state and national wage and hour class actions, and discrimination and harassment claims under state and federal law.



KOREN (KORI) BELL
Partner, Trials, White-Collar Defense,
Complex Commercial Litigation
Willkie Farr & Gallagher LLP

Koren (Kori) Bell is a partner in Willkie's Litigation Department. A nationally recognized litigator and former federal public defender, Bell's diverse practice focuses on high-stakes trials, white-collar criminal defense, complex commercial litigation, government and internal investigations, and regulatory enforcement matters.

Bell has been lead counsel in some of the nation's most complex and highly publicized trials and appeals—including in a case she argued before the US Supreme Court. Praised by judges for her courtroom skill—Bell is known as a tenacious and creative advocate. Inside and outside the courtroom, she has handled high-stakes and sensitive matters for companies and prominent individuals across a range of industries.



SHEHNAZ BHUJWALA
Partner
Boucher LLP

Shehnaz Bhujwala is an attorney with a focus on representing people harmed by misconduct, wrongful practices, or dangerous products to obtain justice through civil lawsuits. She has focused on complex civil litigation cases involving, for example, class actions and mass torts on behalf of people against major companies and government, but also helps survivors of sexual assaults seek justice through civil litigation.

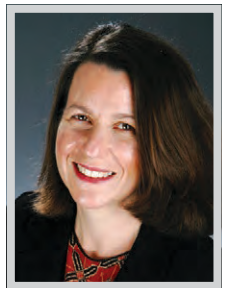
Some of Bhujwala's significant cases include the settlement on behalf of hundreds of survivors of childhood sexual abuse against the Los Angeles and San Diego Catholic Archdioceses; settlement of a civil action brought by numerous survivors of an infamous 1976 mass kidnapping against the kidnappers; and a class action settlement against a telephone company for privacy violations.



ERICA BOSE
Partner
Cox, Castle & Nicholson

Erica Bose has built a reputation in California for representing developers of all sizes, as well as various equity providers, in connection with their acquisition, disposition and development of real estate assets. She oversees nearly all of the acquisitions of land by a homebuilder in California.

Bose has also carved out a niche over the last 22 years representing capital providers and builders in the land bank financing arena. While more attorneys are trying to jump into the space today, Bose stands out amongst her counterparts due to her more than two decades of expertise in the area and the reputation she has built on a national level as one of the primary go-to attorneys for land bank finance transactions.



LAURA W. BRILL
Founding Partner
Kendall Brill & Kelly LLP

Kendall Brill & Kelly partner Laura W. Brill is one of the firm's founding and named partners who is a perennially Chambers-ranked attorney for appellate law. With a focus on complex civil litigation and appeals relating to media, entertainment, commercial and regulatory disputes, Brill has secured precedent-setting victories in numerous appearances before state and federal courts.

Brill handles a broad array of high-profile business disputes involving contracts, torts, intellectual property, governance issues; First Amendment and other constitutional issues; fine art restitution; government contracting and challenges to municipal regulation. Her appellate skills led to her election to membership in the highly regarded California Academy of Appellate Lawyers.

HUESTON HENNIGAN LLP

Congratulations

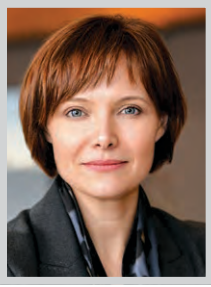


BRITTANI JACKSON CHRISTINE WOODIN

Women of Influence: Attorneys

—Los Angeles Business Journal

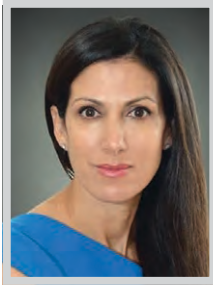
WOMEN OF INFLUENCE: ATTORNEYS

**CLAIRE CASTLES**

Partner
Jones Day

Claire Castles has developed her impressive legal career and business experience to become one of the top health care and life sciences lawyers in Los Angeles as well as a rising star in the national and international health care and life sciences legal industry. Castles' practice focuses on helping clients navigate a complex and ever-changing health care and life sciences regulatory compliance industry. As part of her work, Castles frequently assists clients on their most strategic operational issues.

Claire's longstanding experience and understanding of the variety of complex regulatory compliance, reimbursement and licensure issues facing clients helped to make Jones Day a "go-to" law firm for California health care providers and life sciences companies.

**MEREDITH CAVALLARO**

Partner
Paduano & Weintraub LLP

Meredith Cavallaro is a member of Paduano & Weintraub LLP and leads its Employment Practice. She has been with the firm since 2000. Her practice is devoted to all aspects of employment litigation and counseling. She defends employers nationally, and across various industries, in state and federal actions and arbitrations involving claims of discrimination, hostile work environment, equal pay violations, retaliation, equity and contract disputes, and violations of the Fair Labor Standards Act and state and local wage and hour laws. She is a fierce advocate and has obtained defense verdicts in every case she has tried.

Cavallaro leads a team that responds to and manages the complex issues that arise from workplace crises, including high profile sexual harassment complaints.

**CHERYL S. CHANG**

Partner; Vice Chair, Financial Institutions
Litigation and Regulatory Compliance
Practice Group; Co-Chair,
Los Angeles Office
Blank Rome LLP

As Blank Rome's first female Asian-American partner, Vice chair of the firm's nearly 50-attorney Financial Institutions Litigation and Regulatory Compliance practice group, and co-chair of the 90-member Los Angeles office, Cheryl Chang is a skilled leader and a formidable litigator.

Chang consistently achieves favorable outcomes for her clients in complex corporate matters using her creative, pragmatic approach to conflict resolution in litigation, trial, and settlement negotiations. Chang litigates for significant corporate and entertainment clients before state and local courts in the areas of intellectual property, antitrust and consumer class action defense.

**JENNIFER CHANG**

Attorney
The Law Offices of Jennifer Chang

Jennifer Chang zealously represents students with special needs in all facets of special education law through advocacy, negotiation and litigation. Chang's passion for helping others and decades of experience have led her to accomplish exceptional results for California families. Due to the delicate nature of the cases Chang handles many remain confidential. Still, the feedback and reviews she receives from clients are representative of the relief and empowerment she helps families find.

Chang's work protects students with disabilities and ensures they receive the curriculum and services required from public schools under The Individuals with Disabilities Education Act. Equally important to Chang's practice is helping families of students with special needs learn to advocate for themselves and their children.

**ANGELINE CHEN**

Senior Counsel
Clark Hill

Angeline Chen's impact extends well beyond her practice and into her LA community as she leverages her time and deep immigration knowledge in concerted efforts to help people who can't afford representation. As an immigration law leader, Chen counsels clients in developing and implementing strategies to address complex immigration matters, including obtaining family-based or employment-based permanent residency, work visas and legal status.

Chen assists families that have been separated during border crossings by providing legal advice, food, supplies and donating items for migrant shelters housing those to seek asylum in the US. In recent years, Chen has successfully represented victims of domestic violence committed by their US citizen spouses and individuals who were undocumented in receiving their permanent residency.

**JULIA CHERLOW**

Partner
Bird, Marella, Rhow, Lincenberg,
Drooks & Nessim, LLP

Former ballerina and a force in the field of plaintiff-side entertainment litigation, Julia Cherlow represents A-list celebrities and industry-leading agencies in various high-profile compensation-related disputes, including multiple active arbitrations. She also serves as trial counsel and litigates bet-the-company civil disputes across industries, succeeding for clients ranging from television producers to multinational clothing manufacturers to entrepreneurs to world-famous architects.

While succeeding in her practice, Cherlow has been a thought leader throughout the past decade. She has published six articles with topics ranging from how profit participants can protect themselves from self-dealing in television streaming distribution to advice and best practices for young attorneys arguing their first motion in court.

**KATY CONROY**

Partner
Sklar Kirsh LLP

Katy Conroy is a partner of Sklar Kirsh LLP in the Corporate and Real Estate Departments. A former 'big law' M&A attorney, she brings a wealth of experience in complex corporate and real estate transactions. Conroy has deep expertise in sophisticated legal areas such as real estate capital markets, corporate M&A and fund formation. Clients consistently seek her involvement in their matters, a testament to her ability to distill complex concepts into understandable, actionable advice.

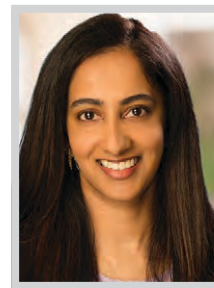
Conroy has a broad corporate practice, advising clients across a variety of industries in various corporate and transactional matters, including mergers and acquisitions, and equity and debt financing transactions. She counsels clients through all phases of the transaction process.

**ERIKA CONTRERAS**

Partner
Panish | Shea | Ravpudi LLP

Erika Contreras is an attorney at Panish | Shea | Boyle | Ravipudi LLP and focuses her practice on catastrophic personal injury, wrongful death and motor carrier liability cases. Licensed in California and Nevada, Contreras has obtained millions of dollars in awards for her clients, including many seven-figure and eight-figure verdicts and settlements throughout California.

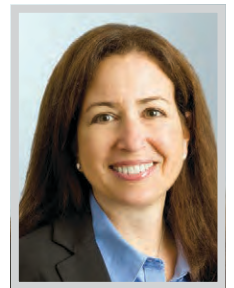
Contreras recently obtained a \$15,750,000 settlement for the wrongful death of a 13-year-old girl who died as the result of a mismanaged asthma attack at school. More importantly, Contreras was able to obtain five non-monetary terms which included more training for employees to help prevent this type of tragedy from ever happening again.

**SHILPA COORG**

Senior Associate
DTO Law

Shilpa Coorg is an experienced commercial litigator at certified minority-owned law firm DTO. She handles high-stakes cases that have earned her a distinguished reputation in intellectual property litigation and counseling, contract disputes, and other commercial litigation matters, as well as cases brought under state or federal laws such as Proposition 65, the Telephone Consumer Protection Act, the Wiretap Act, the California Invasion of Privacy Act, and the Video Privacy Protection Act.

Coorg has routinely taken a leading role in bet-the-company cases from pre-filing through trial, in both state and federal courts and alternate dispute resolution forums. Her patent expertise spans a broad range of technologies, including medical device, pharmaceutical generic product, smartphone, hardware, software, telecommunication and design patents.

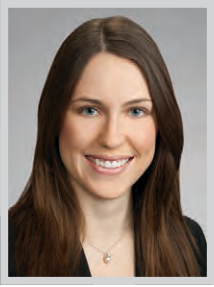
**SANDRA CRAWSHAW-SPARKS**

Partner; Chair, Copyright, Media &
Entertainment
Proskauer Rose LLP

A well-known and respected entertainment industry litigator with 35+ years of success, Sandra (Sandy) Crawshaw-Sparks represents the most iconic names in music on recording, publishing, licensing and management contracts, copyright and trademark infringement claims, unfair competition claims, and the rights of privacy and publicity.

While she fiercely fights high-profile battles for her clients and wins on some of the biggest, industry-shaping matters in entertainment, Crawshaw-Sparks also negotiates pre-litigation and pre-trial resolutions of highly sensitive and confidential personal and entertainment-related disputes, protecting her clients and their reputations from unwarranted media scrutiny and creative distraction.

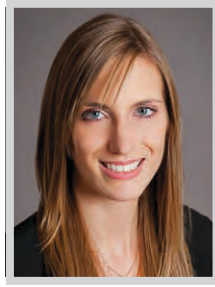
WOMEN OF INFLUENCE: ATTORNEYS

**JULIE CRISP***Partner*

Latham & Watkins LLP

Latham tax partner Julie Crisp leverages a sophisticated understanding of clients' commercial objectives and experience across a broad range of industries to develop creative solutions to the complex benefits and compensation issues that can shape market-changing transactions.

Crisp forges trusted relationships with private equity funds, public and private companies, and executives in Los Angeles and across the nation to provide practical and up-to-date market advice involving the executive compensation and employee benefits aspects of mergers and acquisitions, financings, initial public offerings, spin-offs and other corporate transactions. She also advises on compliance with ERISA and applicable tax and securities laws, as well as compensation disclosures for proxy statements and other public filings.

**MICHELE CUMPSTON***Partner*

Kirkland & Ellis

Michele Cumpston is a fierce advocate for her clients and a respected negotiator among her peers. Cumpston, a partner in Kirkland & Ellis' Los Angeles office, focuses her practice in the areas of mergers and acquisitions, private equity and corporate governance. Her clients include some of the biggest names in private equity, both in Los Angeles and globally, including Oaktree Capital Management, H.I.G. Capital and Francisco Partners, among others.

In the past 18 months, Cumpston has led or played a significant role in deals whose aggregate exceed \$10 billion. She represents buyers, sellers, private equity funds and their portfolio companies and financial institutions in a variety of complex M&A transactions.

**ALESHA DOMINIQUE***Partner*

Norton Rose Fulbright

An intellectual property lawyer with a focus on trademark, false advertising and unfair competition, copyright and patent matters, Alesha Dominique is a partner at Norton Rose Fulbright's Los Angeles office. She has represented clients before federal district courts, the US International Trade Commission, the US Court of Appeals for the Federal Circuit and the Trademark Trial and Appeal Board.

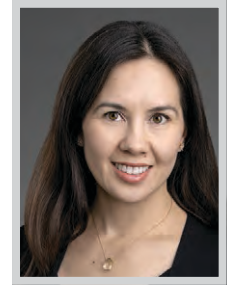
A trusted advisor to a wide range of clients, Dominique works to acquire, develop and exploit intellectual property assets and assists with comprehensive trademark clearance, prosecution and enforcement matters. Clients also rely on Alesha to conduct entertainment title searches and provide clearance analysis.

**ERIN DONOVAN***Partner*

Musick, Peeler, & Garrett LLP

Erin Donovan's principal practice areas include general civil litigation, business litigation, insurance coverage and defense litigation, and probate litigation. She has participated in five trials (three civil and two probate) and as lead counsel, has successfully obtained a defense award at arbitration. In addition to representing insurance companies and their insureds, she has served as counsel for a variety of businesses, academic institutions, universities and charter schools.

While attending Loyola Law School, Donovan worked as an extern for the Honorable Dickran M. Tevzian, Jr., United States District Court for the Central District of California. She also served as managing editor of the Loyola of Los Angeles International & Comparative Law Review.

**CHRISTINE ELLICE***Partner*

DLA Piper

Christine Ellice advises consumer financial services, banking, securities and technology companies on commercial litigation and class action defense matters. She has particular experience in the defense of securities class actions, primarily representing investment banks in '33 Act claims. Additionally, she assists individuals and growth-stage companies in partnership and LLC disputes, investor actions and general business litigation.

Ellice also is experienced in the entertainment industry, having represented clients in film finance, copyright, defamation and licensing litigation. As a licensed lawyer in both California and New York, Ellice partners with clients nationwide to resolve their disputes, and in particular, helps them navigate California's unique legal landscape.

Congratulations to our partner Safia Hussain who has been selected to the *Los Angeles Business Journal's* 2024 Women of Influence: Attorneys list!

We commend your exceptional professional achievements and unwavering dedication to the firm and your clients.



LOS ANGELES
NEW YORK
CHICAGO
NASHVILLE

WASHINGTON, DC
SAN FRANCISCO
BEIJING
HONG KONG

loeb.com

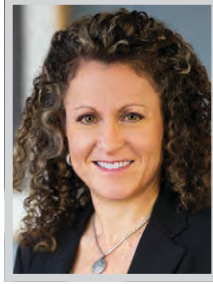
WOMEN OF INFLUENCE: ATTORNEYS

**MARTA FERNANDEZ**

Chair, Labor & Employment Department
Jeffer Mangels Butler & Mitchell LLP

Marta Fernandez has a traditional labor law practice with 38 years of experience in the representation of employers in management-labor relations, including collective bargaining in both the private and public sectors. She has negotiated well over 100 labor contracts for her clients with every major labor union in Los Angeles and in California, primarily in the healthcare and hospitality industries. The labor contracts she negotiates represent multiple millions of dollars to employers in labor costs covering wages, benefits such as health care and pension plan contributions, and work rules.

Fernandez is the chair of the Labor & Employment Law Department at Jeffer Mangels Butler & Mitchell LLP (JMBM) and is a member of the firm's Management Committee.

**DEBRA FISCHER**

Partner
Morgan, Lewis & Bockius LLP

During the last 30 years, Debra Fischer has developed a niche employee mobility practice in California and nationwide, advising on and litigating unfair competition and trade-secret issues that arise when employees change employment. She has achieved noteworthy outcomes, including back-to-back jury wins in 2023, allowing employers to realize critical business objectives related to their most valuable resource: employees.

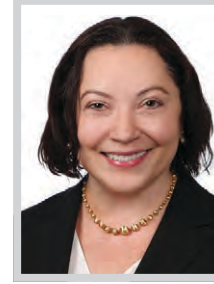
As competitive industries navigate an escalated battle for talent, clients turn to Fischer to advise and defend them as they protect their sensitive data and workforces. Fischer advises on and creates practical, enforceable measures designed to deter employee and competitor misconduct and avoid litigation.

**RACHEL FISET**

Managing Partner
Zweiback, Fiset & Zalduendo LLP

Rachel L. Fiset is a co-founder and managing partner of Zweiback, Fiset & Zalduendo LLP, a woman-owned complex litigation and white collar criminal defense law firm. Rachel's practice includes various state and federal civil and white-collar criminal matters, including government and internal investigations. She has achieved outstanding results for individuals accused of health-care fraud, political corruption, bribery, SEC violations, real estate investment fraud, environmental violations, import/export violations, money laundering, copyright infringement and theft of trade secrets.

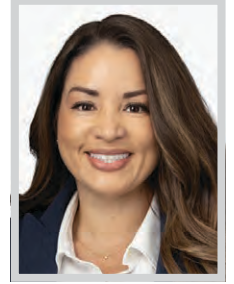
While Fiset remains active in several of the highest-profile investigations and cases in the Central District, she continues to grow an impressively diverse client base with cases that are anything but "routine."

**JEANNE FUGATE**

Partner
King & Spalding

Jeanne Fugate is a go-to partner on employee mobility issues and other complex civil litigation. A former journalist, Fugate excels at fast-paced and persuasive writing to get to the heart of the issues clearly and efficiently. In order to litigate in these high-stakes claims, lawyers are often called upon to respond quickly to demand letters and to immediately move to draft and/or defend against requests for TROs and preliminary injunctions.

A standout career accomplishment for Fugate was her role in a \$6.15 million damages award for a leading aircraft supply company following a three-week jury trial in a trade secrets case. The client Ansett Aircraft sued its former comptroller and two competitor companies for stealing trade secrets.

**YESENIA GALLEGOS**

Partner
McDermott Will & Emery

A key employment partner within McDermott's Los Angeles office, Yesenia Gallegos focuses her practice on a wide range of matters, including wage and hour law, discrimination and harassment claims, executive employment agreements, leaves of absence, and reductions in force. She represents employers in employment litigation—including class actions—pending in both state and federal court, California representative actions under the state's Private Attorneys' General Act (PAGA) and also represents employers in actions against former employees in trade secret and embezzlement actions that require immediate restraining orders, injunctions and/or liens.

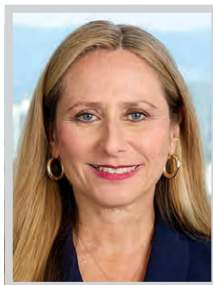
In 2023, Gallegos led an all-woman attorney team to a decisive victory for Dart by successfully opposing the plaintiff's motion for class certification.

**ELLYN GAROFALO**

Los Angeles Managing Shareholder
Carlton Fields, LLP

Veteran trial lawyer Ellyn Garofalo, boasts an illustrious legal career and is known to be a fierce advocate, successfully representing clients in complex, high-profile matters. A few notable career accomplishments include defending Sandeep Kapoor, the family doctor of Anna Nicole Smith, and securing an acquittal on all charges in a drug conspiracy case; representing actor Minnie Driver in a trial and securing a criminal contempt conviction against a defendant property owner for violating an easement agreement; and defending actor Alyssa Milano in her \$10 million fraud lawsuit against her former business manager.

Garofalo frequently defends against allegations of securities, bank, mortgage, healthcare, internet and tax fraud, often involving high-profile individuals.

**JULIE GERCHIK**

Partner
Glaser Weil

Julie R. F. Gerchik is a highly sought-after complex commercial litigator, who regularly represents an enviable roster of domestic and international financial institutions, entertainment companies, and high-net-worth individuals. Gerchik handles all aspects of litigation and trial, including investigations, and has considerable experience across various industries in all aspects of motion practice, discovery, mediation, and both trial and arbitration work in federal and state court.

Gerchik brings the exacting skill required to both effectively navigate high-profile public disputes with significant media implications and handle highly confidential personal matters. Some of her greatest client accomplishments are those that successfully avoided headlines.

**ABIRAMI (ABI) GNANADESIGAN**

Member
Dykema Gossett PLLC

Upon joining Dykema as an associate, Abirami (Abi) Gnanadesigan demonstrated remarkable acumen, making invaluable contributions to clients' success. Not only did she excel professionally, she also swiftly became an active participant in the firm. She immersed herself in the firm's culture, serving on the associate's committee and contributing significantly to a committee focused on retaining minority lawyers.

Gnanadesigan continues to uphold these commitments, demonstrating her enduring dedication to both her profession and her colleagues. She serves as a formal mentor to Dykema associates and co-leads the Los Angeles office's summer associate program.

**VALERIE GOO**

Office Managing Partner
Crowell & Moring LLP

For over two decades, Valerie Goo, managing partner of Crowell & Moring's Los Angeles office, has represented some of the world's leading companies in complex litigation involving trademark infringement, unfair competition, trade secrets, false advertising and consumer class actions. She has tried numerous cases in federal and state courts across the country and holds a successful record in representing clients in commercial litigation and intellectual property matters, including eight- and nine-figure disputes.

She currently represents several large companies in fiercely fought intellectual property, commercial disputes and trade secrets cases between competitors. Her active matters include clients that are household names in the manufacturing, beverage e-commerce and electronic industries.

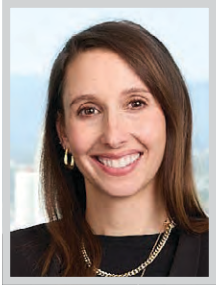
**SARAH GRAHAM**

Partner
Gibson, Dunn & Crutcher LLP

Sarah Graham's knowledge and understanding of her media and entertainment clients' businesses, as well as industry economics, provides her with valuable insight in negotiating deals for her clients. Graham regularly represents some of the leading names in film, television, music and sports, as well as private equity funds and strategic and financial investors, in a range of business transactions.

Graham's notable clients in the film, television, music and sports industries include the National Football League, Universal Pictures, The North Road Company, SpringHill Entertainment (the production company founded by LeBron James), Main Street Advisors, top sports agent Rich Paul and his affiliated entities, Drake and his affiliated entities, and preeminent talent management companies.

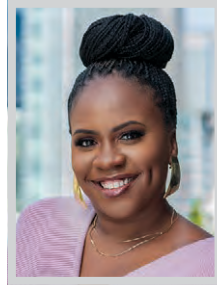
WOMEN OF INFLUENCE: ATTORNEYS



GALI GRANT
Partner
Glaser Weil

Gali Grant, a partner in Glaser Weil’s Litigation Department, handles a variety of litigation matters on behalf of a diverse range of clients, including large and small businesses, financial institutions, investment funds, high-net worth individuals, corporate directors, hotels, and municipalities. Grant’s practice has included national and international cases involving high stakes corporate and financial disputes, complex contract disputes, intellectual property, the False Claims Act, civil rights, and employment disputes.

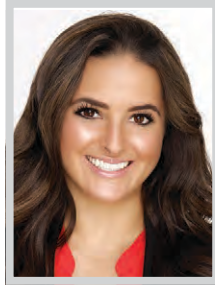
Whether Grant is artfully preventing litigation from ever being filed, directing settlement efforts or stepping in as lead trial counsel, her clients trust her to bring their matters to a successful conclusion. In many of her cases, she navigates legal strategy as well as reputational implications of the matters.



DEMETRIA GRAVES
Founding & Managing Partner;
Certified Family Law Specialist
The Graves Law Firm

Certified family law specialist Demetria Graves opened her own family law practice, The Graves Law Firm, at the age of 25 – just six months out of law school. She now has offices in both Pasadena and Beverly Hills. Graves is considered a leading Family Law attorney and has received many accolades for her dedication to the field of family law as well as to the community.

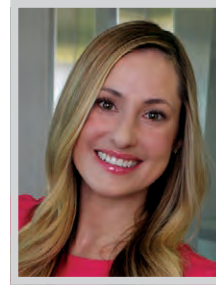
Graves is also the immediate past chair of the Family Law Executive Committee (FLEXCOM) with the California Lawyers Association. She currently co-chairs the African American Alumni Association at Loyola Law School and is a mentor to several law students and young attorneys.



FRANCESCA GRE
Partner
Fox Rothschild LLP

Elevated to partner in 2022 in her first year of eligibility, a rare accomplishment in “big law,” Francesca Grea is one of only three female partners in Fox Rothschild’s Entertainment & Sports Law Department. Based in the Los Angeles office, Grea is a dealmaker who works with the firm’s top entertainment talent, including Angela Bassett, Courtney B. Vance, Joe Pesci, Chris “Ludacris” Bridges, Da’Vine Joy Randolph and Teyonah Parris.

Clients rely on Grea’s strategic guidance to maximize revenue and exposure for their work across multiple platforms, including television, film, new media and podcasts, and to cultivate innovative and sophisticated strategies for growth.



CATHLEEN GREEN
Senior Counsel
Stubbs Alderton & Markiles, LLP

Over the course of her career, Cathleen Green has established herself as a trusted advisor in the entertainment industry with a specific expertise in corporate entertainment strategic transactions, including joint ventures, mergers and acquisitions, financing, as well as traditional entertainment transactions, e-commerce and fashion, branding and endorsement. This experience has resulted in Green’s specialized knowledge of the nuance presented when celebrities, talent, producers or other personalities pursue new business ventures.

In the past year, Green has facilitated the negotiation of several new production company joint ventures, as well as celebrity founded joint ventures and start-ups for a variety of businesses, including skincare, beauty, pet apparel/products, wine and ready-to-drink cocktails.



TAYLOR HATHAWAY-ZEPEDA
Partner
Gibson, Dunn & Crutcher LLP

Taylor Hathaway-Zepeda is a partner in the Los Angeles office of Gibson, Dunn & Crutcher. Her practice focuses on mergers, acquisitions, divestitures, joint ventures, equity investments, restructuring transactions and general corporate governance. She works with companies in a broad array of industries, and has extensive experience working with media, entertainment and technology companies and private equity sponsors.

Prior to joining Gibson Dunn, Hathaway-Zepeda served as managing law clerk to Chief Judge Sandra Lynch of the US Court of Appeals for the First Circuit. She received her law degree from Harvard Law School, where she was an editor of the Harvard Law Review and a finalist in the 100th Ames Moot Court Competition.



Marta M. Fernandez
Chair, Labor & Employment
Department
310.201.3534
MFernandez@jmbm.com

Jeffer Mangels Butler & Mitchell LLP congratulates outstanding partner

Marta M. Fernandez

on her recognition as one of the *Los Angeles Business Journal’s* 2024 Women of Influence: Attorneys



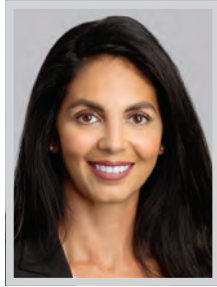
WOMEN OF INFLUENCE: ATTORNEYS

**TERESA HUGGINS**

Partner
Waymaker LLP

Teresa Huggins handles complex commercial litigation at both the trial and appellate level, with an emphasis on intellectual property, fintech and First Amendment matters. A partner at Waymaker LLP, she represents both plaintiffs and defendants, and has argued in state and federal court, achieving decisive victories in both. A Harvard Law graduate and admitted to both New York and California's bars, Huggins handles cases on both coasts.

Handling numerous fintech matters, Huggins secured a dismissal with prejudice for a complaint filed in the Southern District of New York against a cryptocurrency exchange and its founder, alleging violations of the Commodities Exchange Act based on the statute of limitations.

**SAFIA HUSSAIN**

Partner
Loeb & Loeb LLP

Safia Hussain is a commercial litigator, focusing her practice on entertainment, copyright, trademark and other intellectual property matters. She has handled entertainment and contract-based claims involving various motion picture- and television-related agreements, claims involving alleged infringement of screenplays and artwork, claims stemming from the unauthorized use of celebrity likenesses, defamation claims and the recovery of awards statuettes.

Hussain also has experience in a diverse range of business and media disputes, including breach of contract, fraud, privacy, unfair competition, regulatory violations and other complex litigation matters. She has more than a decade of experience defending class actions involving regulatory compliance, false advertising, consumer fraud, consumer privacy and wage and hour violations.

**HELEN HWANG**

Partner
Covington & Burling LLP

Helen Hwang focuses her practice on counseling clients through complex and sensitive cross-border anti-corruption internal investigations and investigations by government enforcement authorities, such as the DOJ and SEC. She also advises clients across a range of industries on the corruption risks of proposed transactions and how to build and improve their compliance programs.

Hwang recently served as co-lead counsel for a military parts manufacturer in a DOJ False Claims Act investigation of alleged failure to comply with MIL-SPEC requirements for testing and qualification. She and the Covington team successfully obtained a declination from the DOJ Criminal Division for the company and a highly favorable settlement from the DOJ Civil Division.

**BRITTANI JACKSON**

Partner
Hueston Hennigan LLP

Brittani Jackson is a nationally recognized rising star who obtains favorable results for clients in a broad range of complex business litigation and investigations conducted by the SEC and various attorneys general.

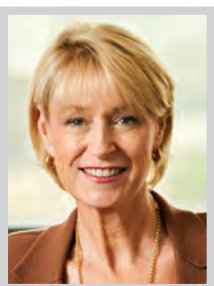
One of the firm's newest partners, Jackson has taken lead roles in several high-profile matters. In addition to the five matters included herein, she achieved a favorable settlement for CoreLogic in litigation involving trade secret misappropriation and a favorable settlement for PricewaterhouseCoopers in a complex business dispute over the FCC's Broadcast Incentive Auction. Jackson recently also obtained a settlement for Chapman University in a breach of contract case and is set to represent the country's largest integrated health care system as lead counsel in a December trial.

**BETH KAHN**

Partner
Musick, Peeler, & Garrett LLP

Beth Kahn is a partner in the Musick, Peeler, & Garrett's Labor & Employment Practice Group. She represents private and public employers in employment-related litigation including wage and hour issues, wrongful termination, retaliation, whistleblower, discrimination, harassment, ADA, negligent hiring/supervision, and violations of constitutional rights and civil rights.

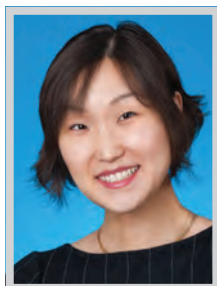
Kahn defends employers in class actions, PAGA cases, and individual matters in federal and state courts, as well as before administrative agencies. As part of her practice, Kahn advises employers, their supervisors, and human resource professionals concerning employee issues including hirings, layoffs, wage and hour compliance, terminations, and other disciplinary actions. She also drafts employee handbooks and other personnel documents.

**CHRISTIANNE KERNS**

Managing Partner
Hahn & Hahn LLP

Christianne Kerns is the first female managing partner of Hahn & Hahn LLP. Under her leadership, the firm has transitioned from being one of Southern California's elite, white shoe boutique firms to most recently earning the prestigious Women's Business Enterprise National Council's national certification as a majority Women Owned Business with more than 85% of the firm's personnel identifying as women and/or members of traditionally marginalized groups.

As managing partner, Kerns is responsible for strategy and leading the firm; developing, implementing and driving organizational goals, procedures and policies; managing all aspects of the firm's operations as well as firm lawyers and the firm's executive director; collaborating with other partners; and business development and positive client relationships.

**NARY KIM**

Partner
Kendall Brill & Kelly LLP

Kendall Brill & Kelly Partner Nary Kim is a leader inside and outside of the courtroom. As a partner and lead member of KBK's Media and Entertainment team, Kim has been an integral member of seven KBK trial teams, including the trial teams that won a favorable judgment for a prominent business client and secured multiple arbitration victories for major film and television studios.

Kim rose to be a partner in just five years, having thoroughly demonstrated the expertise needed to develop winning cases for KBK's clients. In just the past year, she played a leading role in securing the dismissal of a child pornography case filed by the person pictured on the album cover of Nirvana's "Nevermind."

**HELEN B. KIM**

Partner
Norton Rose Fulbright

Helen B. Kim is a trial lawyer with more than 30 years of experience representing clients in securities and other complex commercial litigation. She represents public and private companies, as well as their directors, officers and principal shareholders before the courts and in arbitration proceedings.

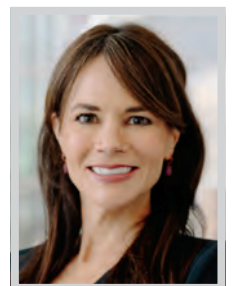
Kim brings her three decades of bi-coastal winning experience in complicated business controversies to the table, with strong business judgment gained as a result of rigorous training and development of her business litigation practice in large law firms. She has successfully defended clients in multiple shareholder derivative suits, nationwide securities class actions and securities and commodities enforcement proceedings. She also guides companies and their officers through regulatory investigations.

**LISA KOLIEB**

Partner, Real Estate, Land Use
and Development
Akerman LLP

Lisa Kolieb, a partner at Akerman LLP, holds a leadership role within the firm's Los Angeles Real Estate Practice Group. With a focus on land use and real estate development matters, Lisa guides clients through the land use entitlement process from initial site diligence to ultimate project approval, construction, and operation, and advises clients on the government and regulatory aspects of real estate transactions. She represents clients in the commercial, residential, hospitality, industrial and nonprofit sectors, highlighting her versatility and impact in diverse areas of the industry.

Among Kolieb's standout achievements is her adept counsel on numerous residential, retail, industrial, and hospitality matters for her clients, including obtaining discretionary approvals and performing land use analyses.

**BETHANY KRISTOVICH**

Partner
Munger, Tolles & Olson LLP

Bethany Kristovich is known for her ability to drive to resolution bet-the-company cases in the crisis, professional responsibility, consumer protection, product defect and personal injury contexts. She has led the defense against multimillion and billion-dollar claims in the energy, entertainment and hospitality industries, among others. As the co-chair of MTO's class action practice group and professional liability defense group, she is a go-to lawyer in times of crisis, representing PG&E, MGM, Hawaiian Electric Company and Oaktree Capital in significant matters.

Kristovich's reputation as a lawyer's lawyer, defending law firms facing professional malpractice charges, has been proven by her work for Katten Muchin, Reed Smith, Pillsbury Winthrop Shaw & Pittman, Manatt Phelps & Phillips, Willkie Farr & Gallagher and others.

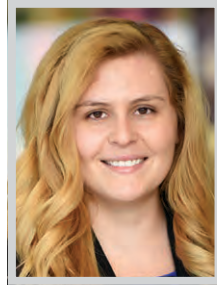
WOMEN OF INFLUENCE: ATTORNEYS

**KATHY KU***Partner*

Wilson Sonsini Goodrich & Rosati

It is typical for former Supreme Court clerks to assume a place among the country's leading litigators and academics. It is far rarer for someone like Kathy Ku, a former clerk to the late Supreme Court Justice Ruth Bader Ginsburg, to become one of the country's top deal lawyers.

Ku's has advised on transformative tech industry deals involving tech sector giants like Google, Uber and Lyft. In the last two years alone, she represented cybersecurity firm Mandiant in its \$5.4 billion acquisition by Google and Pensando Systems in its \$1.9 billion acquisition by AMD. She also advised on a \$690 million investment by Insight Ventures, GIC, and Smash Capital in Coda Payments.

**CLAIRE-LISE KUTLAY***Partner*

Greenberg Gross LLP

Claire-Lise Kutlay's abilities transcend her years of experience and this has led to her quickly gaining significant trial experience in high-stakes cases. Kutlay is frequently called upon to handle some of the firm's toughest cases and most difficult issues, including navigating PAGA claims, representing women who retaliated against or discriminated against in their employment, seeking justice for persons who survived sexual assault and harassment, and representing individuals and business entities in complex commercial cases.

Kutlay has worked on numerous high-profile matters, including representing plaintiffs in whistleblower/wrongful termination suits, gender discrimination actions, and defending an AmLaw 200 firm in a case seeking \$500 million in damages for violation of civil RICO, fraud, and other torts.

**KELLY LAFFEY***Partner*

Stubbs Alderton & Markiles, LLP

With more than a decade of experience in the legal field, Kelly Laffey's practice focuses on advising emerging growth and middle market companies on issues related to corporate governance and formation, venture capital and other financings, mergers and acquisitions, joint ventures, cross-border transactions, employee compensation, complex stockholder and operating agreements, and other general corporate matters.

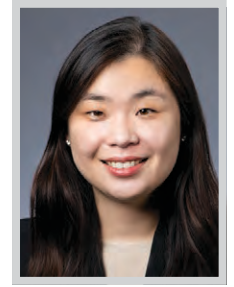
As partner in the transactional group, Laffey's clients are representative of the vibrant startup and middle market ecosystem and include companies in the technology, digital and entertainment, clean energy, healthcare, e-commerce, and manufacturing industries. She also advises investors and funds in connection with venture capital and other financings.

**IRENE LEE***Partner*

Russ August & Kabat

Irene Lee is a partner at Russ August & Kabat, where she focuses her practice on all aspects of intellectual property, including patent, trademark, copyright protection through registration, enforcement and licensing. Lee has extensive experience in trademark and copyright prosecution and litigation with an emphasis on global brand expansion and content management. As a registered patent attorney, she also counsels clients concerning patent litigation and monetization with an eye toward building value to their overall business focus.

In the past 12-18 months, Lee has managed over 5,000 brands and attendant rights as part of her role in managing IP portfolio for clients such as The Honest Company, Inc., Thor Industries, Airstream, Carroll Hall Shelby Trust, and many others.

**JENNIFER LEE***Partner*

Sheppard, Mullin, Richter & Hampton LLP

Jennifer Lee, a partner in Sheppard Mullin's corporate practice group, boasts an impressive portfolio of global clients, representing private companies spanning across various industries, including media and entertainment, food and beverage and financial services. Lee is particularly experienced in M&A transactions. In addition to US-based companies, Lee is a trusted advisor for clients based outside of the United States and regularly guides them through high-profile cross-border M&A transactions.

Among Lee's recent accomplishments has been her work representing Toho Co. Ltd, Japan's largest studio and the creator of "Godzilla," in its \$225 million acquisition of a 25% stake in producer-distributor Fifth Season. As a result of the deal, Fifth Season will be valued at \$900 million.

CONGRATULATIONS TO OUR ATTORNEYS
RECOGNIZED AMONG LABJ'S 2024

Women of Influence: Attorneys

**Julie Gerchik**

PARTNER

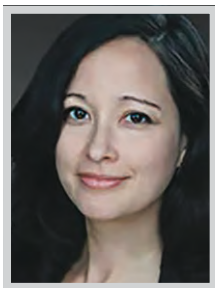
**Gali Grant**

PARTNER

glaserweil.com

Century City | Newport Beach | San Diego | San Francisco

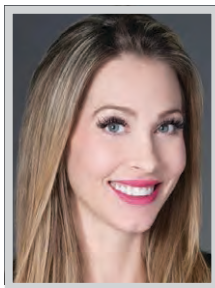
WOMEN OF INFLUENCE: ATTORNEYS

**LISIA LEON**

Partner
Paduano & Weintraub

Paduano & Weintraub partner Lisia Leon recently represented an employer (a large public company, with locations in over 100 cities across the US) in connection with a class action federal wage and hour suit brought by a former employee. Leon successfully opposed the plaintiff's efforts to certify a nationwide collective consisting of hundreds of locations and thousands of employees over a six-year period. Following a mediation, Leon obtained a favorable class-wide settlement for close to 2,000 other employees.

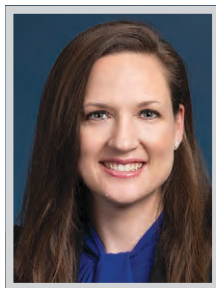
Leon also recently secured summary judgment for a real estate management group, board of a condominium building, and individual board members on claims of tortious interference with contract and whistleblower claims.

**JENNIFER LIESER**

Partner
Kaplan Marino, PC

Jennifer Lieser is a partner at Kaplan Marino whose practice primarily focuses on federal and state white collar and complex criminal litigation, including but not limited to bribery and kickbacks, fraud, money laundering, cybercrime and international extradition.

Before attending law school, Lieser worked in corporate public relations at Edelman Communications & Marketing Firm, and as marketing and public relations director for a small company. Lieser's public relations and marketing background has been an asset to her legal career. Her ability to successfully promote large companies and diverse products have given her a unique edge on crafting clever legal arguments and confidently representing her clients both in and out of the courtroom.

**CHRISTINA LINCOLN**

Partner; Co-Chair of Firm's Women of Robins Kaplan (WoRK) Resource Group
Robins Kaplan LLP

Christina Lincoln, a catastrophic loss insurance advisor and trial lawyer, specializes in high-risk coverage and bad faith disputes for domestic and international insurers nationwide. She handles cases ranging from coal mining closures to pandemic losses, volcanic eruptions, fires, floods, construction projects, and nine-figure commercial property damage claims. Lincoln also addresses the legal profession's persistent DE&I challenges by serving as a leader in supporting diverse talent pipelines and systemic programs within her firm.

An example of her current casework includes her defense of domestic insurer, Liberty Mutual Fire Insurance Company, in a lawsuit against Regal Cinemas, which seeks over \$550 million in damages it allegedly sustained across its 500+ theaters in the United States due to the presence of COVID-19.

**MEG LODISE**

Partner
Sacks, Glazier, Franklin & Lodise, LLP

In her 35-plus year career, Meg Lodise has established an impressive reputation for successfully handling some of the most complex and high-dollar trusts and estates disputes in California. Her work not only achieves important resolutions for clients, but also shapes the future of trusts and estates law.

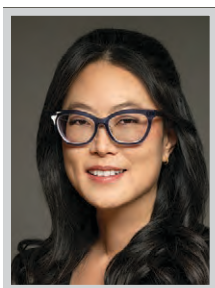
As one example, Lodise obtained a precedent-setting decision in *O'Connor v. O'Connor*, defending an appeal brought to challenge the exercise of a power of appointment. In a published decision, the Court of Appeal affirmed the probate court orders, and in doing so, clarified California law on powers of appointment. Underscoring her respect in the legal community, Lodise was appointed by the Probate Court as Guardian Ad Litem for the minor children of entertainer Michael Jackson.

**SHARRE LOTFOLLAHI**

Partner
Kirkland & Ellis LLP

Sharre Lotfollahi is an intellectual property litigation partner in the Los Angeles office of Kirkland & Ellis who represents a diverse roster of clients in disputes involving various areas of technology, including semiconductor manufacturing, microprocessor design, athlete tracking, online ad creation and customer service software, and medical devices and implants. First and foremost a trial attorney, Lotfollahi has been a member of an impressive nine trial teams, serving as first chair on two high-profile pro bono trials.

While her practice encompasses multiple areas of IP litigation including patent, trademark, copyright and licensing, Lotfollahi has of late distinguished herself as a leading practitioner on some of the most high-ticket and consequential trade secrets matters of the last few years.

**ANDREA WANG LUCAN**

Partner
Sidley Austin, LLP

Andrea Wang Lucan joined Sidley Austin's Los Angeles office with an established and highly respected reputation in the renewable energy industry. A partner in the firm's Energy, Transportation, and Infrastructure group, she advises clients in project development and financing, mergers and acquisitions, equity and debt financing, equipment purchase and sale agreements, and power purchase agreements. Her practice focuses on companies who are at the forefront of energy transition and are engaged in the development, construction and operation of solar power, wind power, energy storage, and alternative energy projects.

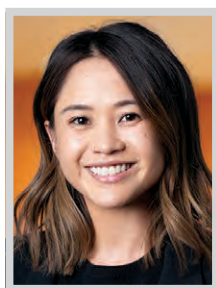
Lucan represents Southern California Edison, who she advised on a transmission project with the Morongo Band of Mission Indians to connect much-needed renewable resources with the grid.

**NICOLE LUEDDEKE**

Associate
Paul Hastings LLP

Rising star in Paul Hastings' White Collar Defense practice, Nicole Lueddeke is an associate in in the firm's Los Angeles office. Lueddeke focuses her practice on white-collar criminal defense, internal corporate investigations, and complex civil litigation.

In both state and federal courts, Lueddeke represents a broad range of domestic and international clients. With extensive experience in all stages of litigation from pre-filing through trial and appeal, and in state and federal investigations from pre-indictment and pre-disclosure through resolution, she defends individuals and companies in high-stakes civil and criminal cases. She also maintains an active pro bono practice. She was part of the trial team in the "Fat Leonard" criminal corruption scandal securing a significant jury win.

**MICHELLE MABUGAT**

Partner
Greenberg Glusker

Michelle Mabugat is a partner in Greenberg Glusker's Corporate, Finance & Securities Group. She has a broad-based corporate and transactional practice that focuses on advising entrepreneurs and high-growth companies on matters that span the business lifecycle, from start-up through exit.

Often acting as outside general counsel, Mabugat assists clients with their general corporate and day-to-day transactional needs as well as their most critical transactions, including early- and growth-stage equity and debt financings, joint ventures and strategic alliances, licensing deals, and mergers and acquisitions in both distressed and non-distressed situations. She also provides strategic advice to boards, management teams and investors on sensitive issues related to corporate governance, shareholder disputes, regulatory compliance and risk management.

**NINA MARINO**

Partner
Kaplan Marino

Nina Marino's complex litigation and white-collar crime practice is national and international. She negotiates with the US Department of Justice, state attorneys general, district attorneys, and Interpol in her defense of individuals alleged to be involved with Medicare fraud, Foreign Corrupt Practice Act violations and tax, cyber and other crimes.

Marino's unconventional combination of caring, integrity and formidable lawyering has earned her a national reputation and recognition. She discovers the shades of gray behind prosecutors' black-and-white arguments to shine new light on her clients' circumstances. Her team-driven, meticulously prepared strategies have repeatedly helped clients reach their objectives — from staying out of prison to defending allegations all the way to trial.

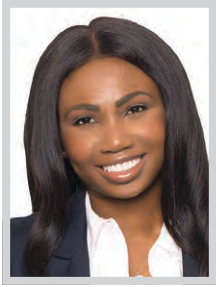
**MERCEDES MARTIN**

Shareholder
Buchalter, PC

Mercedes O. Martin specializes in real estate transactions, with an emphasis on secured transactions, tax credit finance and equity investments. Martin represents developers, borrowers, lenders and investors in the structuring and financing of projects nationwide utilizing low income housing tax credits, new markets tax credits, renewable energy credits and state certificated credits, joint venturers in the acquisition, disposition, management and financing of office, retail, commercial and multifamily projects.

Martin's areas of expertise include complex low income housing tax credit transactions involving multiple public and private funding sources, affordable housing and subsidy layering analysis, new markets tax credit funded affordable housing developments, formation of tax credit partnerships, and green energy projects.

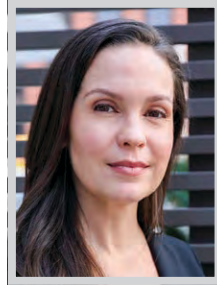
WOMEN OF INFLUENCE: ATTORNEYS



MARIE MAURICE
Director
 Ivie McNeill Wyatt Purcell & Diggs, APLC

Since Marie Maurice was admitted to the California State Bar in December of 2008, she has been committed to being an active member of her community, a mentor to all and an advocate for her clients, peers, and youth.

As a director at Ivie McNeill Wyatt Purcell and Diggs, Marie Maurice has been instrumental in the expansion of the firm, playing an integral role in opening a new branch in Las Vegas in 2022. She makes sure she is always available for the attorneys and legal support staff at the Los Angeles office, her door is always open to mentor, guide or assist someone in whatever way they need it.



KATHRYN MCCANN
Partner
 Annaguey McCann LLP

Partner Kathryn McCann helped found and launch Annaguey McCann in 2023 to shift the profession toward delivering more value to clients through closer, collaborative and responsive representation. Her litigation practice includes a range of business disputes, from fraud, contract and partnership disputes to real estate litigation and defense of consumer class actions.

McCann applies her experience in complex civil litigation, including class actions involving financial fraud and corporate torts, to represent companies and municipalities. Clients benefit from her in-depth case management skills and strategic litigation roadmaps that prioritize clients' business goals. McCann is known for her impact as an assertive and principled litigator.



KIMBERLINA MCKINNEY
Senior Counsel
 Newell Law Group

Kimberlina N. McKinney has amassed a remarkable career over the last decade with significant achievements and contributions to the entertainment industry. Her extensive experience as an entertainment lawyer, coupled with her commitment to civic engagement and DEI initiatives, sets her apart.

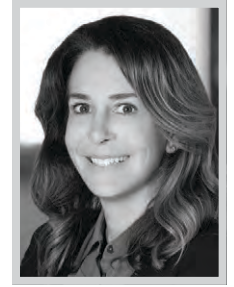
McKinney's ability to master complex entertainment law areas swiftly and streamline internal processes enhanced her client roster quickly. Over the course of her career, her efforts facilitated the successful execution of projects, including Showtime's "Fellow Travelers" and "Mosquito Coast" on Apple+ and multiple projects at Freemantle Media, where she served as vice president of business and legal affairs, a role she also played at A+E Studios.



LISA HELFEND MEYER
Co-Founder and Senior Partner
 Meyer, Olson, Lowy & Meyers

Lisa Helfend Meyer is a co-founder and senior partner at Meyer, Olson, Lowy & Meyers, LLP, a boutique family law firm located in Century City and Irvine. Founded in 2000 entirely by female partners, with the goal of representing clients in high conflict and complex divorces and custody cases, the firm now includes approximately 25 attorneys, who have expertise in all aspects of family law and are adept at both mediating and litigating cases.

For over four decades, Meyer has been a trailblazer within the legal profession and specifically the family law community, a successful businesswoman, and a passionate advocate for the rights of children and parents.



ALISSA MILLER
Partner
 Akin

A decorated finance lawyer in the entertainment industry, Akin entertainment and media partner Alissa Miller is widely recognized as one of Hollywood's leading dealmakers. She regularly handles some of the industry's highest-visibility deals between independent movie production companies and financial institutions and maintains an innovative media and entertainment-focused pro bono practice.

In 2022, Miller assumed the role of partner in charge of Akin's Los Angeles office and has served as a committed advocate for the entertainment industry, navigating challenges during a period marked by significant disruptions. She has continued handling some of the industry's highest-visibility matters representing major financial institutions in blockbuster deals.

CARLTON FIELDS

Congratulations to Ellyn Garofalo for being recognized in the Los Angeles Business Journal's Women of Influence: Attorneys list.

Ellyn Garofalo is the managing shareholder of Carlton Fields' Los Angeles office. Our LA office offers a deep and growing bench that can handle:

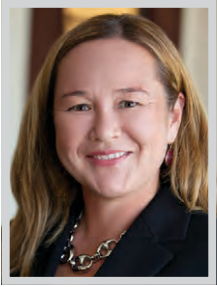
- Real estate transactions
- Commercial litigation
- Class action defense
- Mass tort and product liability litigation
- Labor and employment advice and litigation
- Corporate transactions, including fund formation and representation
- Media and entertainment law and litigation
- Intellectual property
- Cybersecurity and data privacy
- Securities Litigation and Enforcement
- Insurance coverage
- White collar criminal defense

www.carltonfields.com

2029 Century Park East | Suite 1200 | Los Angeles, California 90067-2913



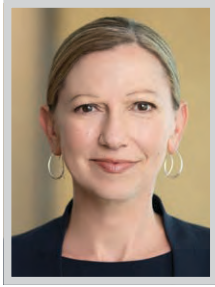
WOMEN OF INFLUENCE: ATTORNEYS

**DEANNE MILLER***Partner*

Morgan, Lewis & Bockius LLP

Deanne Miller is a respected trial lawyer and community leader within Los Angeles and the Southern California region. A litigation partner in Morgan Lewis's Los Angeles office, Miller focuses on mass toxic tort, environmental and product liability matters in California and throughout the United States.

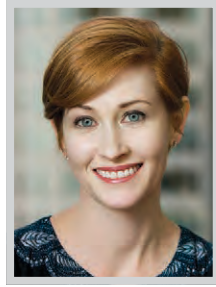
Miller serves as a litigation team advisor and lead counsel to clients in the energy, oil and gas, life sciences and pharmaceuticals, consumer products and retail, and chemical and manufacturing industries. Her recent work has led household-name energy and consumer products companies to legal victory and has further solidified her Los Angeles and Southern California bar reputation as a formidable, unyielding advocate for her clients.

**MELISSA MILLS***Partner*

Wilson Sonsini Goodrich & Rosati

Almost two years into her tenure at one of the nation's most prestigious law firms, Melissa Mills has established herself as a trial lawyer capable of parachuting into matters of the highest stakes. To her work in private practice, Mills brings a background as a federal prosecutor and military lawyer, having conducted trials everywhere from Los Angeles to a foreign combat zone.

Shortly after arriving in 2022 at the Los Angeles office of Wilson Sonsini Goodrich & Rosati, Melissa was asked to play a critical role in a case brought by Vanessa Bryant, to whom a jury ultimately awarded \$15 million on invasion of privacy and federal civil rights claims.

**VIRGINIA MILSTEAD***Partner*

Skadden, Arps, Slate, Meagher & Flom LLP

Virginia Milstead, a partner in Skadden's Los Angeles Litigation Group, is regularly sought after for her broad commercial practice, where she represents US and international clients in both state and federal courts, with a particular emphasis on securities class actions, shareholder derivative and M&A litigation.

Milstead is revered for developing shrewd, innovative arguments based on her encyclopedic knowledge of the law and thorough and precise analysis of the matters in which she is involved, as well as her remarkable track record at obtaining early-stage dismissals for her clients. She has cultivated an excellent reputation for her abilities in defending clients facing complex securities actions and derivative claims.

**SANDRA MONTGOMERY***Partner*

Proskauer Rose LLP

A well-known and respected leader in the private capital sphere, Sandra Lee Montgomery is a recognized force in the predominantly male industry of banking & finance, having closed over \$5.5 billion in transactions for first and second lien senior lenders, mezzanine investors and equity sponsors across the country in 2023 alone. In particular, Montgomery has great depth of experience in complicated finance structures for alternative lenders. Her work includes numerous cross border transactions involving Australia, Barbados, Brazil, Canada, the Cayman Islands, England, Hong Kong, Malaysia, Mexico, the Netherlands, Puerto Rico, Scotland and Singapore.

Montgomery's marketplace reputation and the quality of her work continues to be recognized by industry publications and organizations.

**ELISABETH MORIARTY***Partner; Chair, Litigation Department*

Greenberg Glusker

Elisabeth Moriarty is the chair of Greenberg Glusker's Litigation Department. She is an experienced litigator who specializes in complex, high-profile disputes.

Moriarty has represented plaintiffs and defendants in some of the entertainment industry's most significant disputes involving copyright, trademark and trade dress infringement, motion picture production and distribution, defamation, unfair competition, the licensing of intellectual property rights, and contractual disputes. She is skilled at working on high-profile matters where a confluence of issues come together to span a variety of disciplines. She has extensive experience litigating major profit participation matters on behalf of talent, artists and rights holders, including the Estate of J.R.R. Tolkien and Marvel Entertainment.

WILLKIE PROUDLY CONGRATULATES

Our partners **Kori Bell** and **Michele Mulrooney**

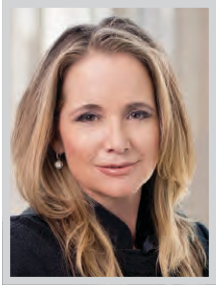
Los Angeles Business Journal's
Women of Influence: Attorneys

WILLKIE

1,200 LAWYERS | 15 OFFICES | 6 COUNTRIES

ATTORNEY ADVERTISING

WOMEN OF INFLUENCE: ATTORNEYS

**ANN MARIE MORTIMER**

Managing Partner, Los Angeles;
Head of Commercial Litigation Practice
Hunton Andrews Kurth LLP

Ann Marie Mortimer has an outstanding track record as a leading litigator attaining precedent-setting results for name-brand clients. She heads Hunton Andrew Kurth's commercial litigation practice, is the founder and managing partner of the firm's Los Angeles office and serves on her 900+ lawyer firm's executive committee. Her cross-disciplinary practice encompasses complex commercial transactions including novel cybersecurity litigation and high-profile environmental claims.

Mortimer has been named "MVP" in Cybersecurity & Privacy by Law360 two years in a row and recognized as leading one of the top verdicts in California stemming from her precedent-setting California Consumer Privacy Act victory for Walmart.

**SARAH MOSES**

Partner
Manatt, Phelps & Phillips, LLP

Sarah Moses is a prominent, entertainment litigation attorney representing clients in the media, entertainment and technology industries, including on copyright, trademark, right of publicity, First Amendment, blockchain and artificial intelligence matters. She is a go-to advisor for both talent and management in music, film and television disputes, as well as a trusted trial lawyer in general commercial litigation with an extensive track record of success.

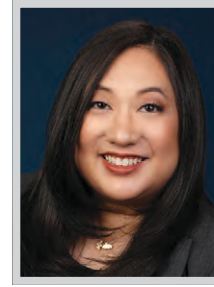
Among her recent high-profile efforts have been her work representing Megan Roup and her company The Sculpt Society in a copyright, Lanham Act, breach of contract and unfair competition lawsuit; and Logan Paul's personal manager, Jeffrey Levin and Ophir Bentov in a federal class action lawsuit related to the online NFT game CryptoZoo.

**MICHELE MULROONEY**

Partner and Chair, Private Wealth Group
Los Angeles
Willkie Farr & Gallagher LLP

Michele Mulrooney is a partner and chair of Willkie's Private Clients Group in Los Angeles. With over 30 years of experience representing high-net-worth families and individuals, Mulrooney focuses her practice on estate planning for high-net-worth individuals, including actors, directors, writers, producers, artists, sports figures, business owners and executives, and real estate investors.

Mulrooney has substantial experience in all aspects of sophisticated estate planning, including the preservation and protection of wealth for generations of families, establishing and advising private foundations, post-death administration of estates and trusts, establishing and advising conservatorships and guardianships, cross-border planning for multinational clients, and insurance issues.

**TRITIA MURATA**

Partner
Davis Wright Tremaine LLP

Leveraging her exceptional combination of skills, tenacity and integrity, Tritia Murata has built an industry-leading practice defending employers in high-stakes, bet-the-company wage-and-hour litigation. She has made a particular name for herself in successfully handling class action and PAGA suits, which carry high exposure for employers and have grown exponentially in recent years.

Murata recently came to Davis Wright Tremaine after nearly two decades at Morrison Foerster, where she rose to become co-chair of the firm's Global Employment & Labor Group, while also building and co-leading the firm's wage and hour class action practice team. Murata has established a track record of successfully defending employers across multiple industries.

**ANGEL NAKAMURA**

Partner
Arnold & Porter

Angel Tang Nakamura is the sole child of a single immigrant mother and the first in her family to enter law. She has built a life that reflects a diligent balance between her impressive legal career and her commitments to diversity, wellness and disenfranchised victims and immigrants. Nakamura has a global practice focused on the management of complex, multi-party litigation, including class actions and multi-district litigation. Her clients have included pharmaceutical and medical device companies, consumer product manufacturers, and oil and gas companies.

Nakamura also has significant experience defending data breach and privacy litigation, including those brought under the California Consumer Privacy Act, California Confidentiality of Medical Information Act, and various state and federal wiretapping statutes.

Congratulations!



Kalley R. Aman
SHAREHOLDER



Mercedes O. Martin
SHAREHOLDER

Los Angeles Business Journal

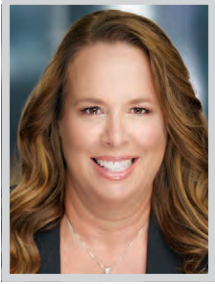
WOMEN OF INFLUENCE: ATTORNEYS 2024

Buchalter

www.buchalter.com

ARIZONA | CALIFORNIA | COLORADO | OREGON | TENNESSEE | UTAH | WASHINGTON

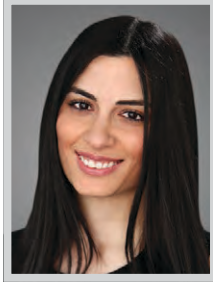
WOMEN OF INFLUENCE: ATTORNEYS


**STEPHANIE JONES
NOJIMA**

Partner
Sanders Roberts LLP

Stephanie Jones Nojima served as a member of the Independent Review Panel that investigated the structural issues within LAPD that led to the rampant corruption in LAPD's Crash Anti-Gang Unit and within the Rampart Division more broadly, which only came to light after. Nojima received a commendation from the Mayor of Los Angeles for her work on the panel.

Nojima chairs the Business Litigation Practice Group and the Recruiting Committee at Sanders Roberts LLP. She has regularly obtained outstanding results for her clients. These results include recently securing a complete defense verdict after first chairing a nine-day jury trial on behalf of her client who was alleged to have sexually harassed a subordinate employee.


RAMELA OHANIAN

Partner
Sheppard, Mullin, Richter
& Hampton LLP

Recognized as a top dealmaker, Ramela Ohanian represents Hollywood's top content producers on transactional matters related to scripted and unscripted television, digital media, short-form content, podcasts and films. Ohanian handles major first look and overall agreements, rights acquisitions and talent agreements for some of the entertainment industry's biggest players, including tech giant Meta and podcast leader Wondery, among others.

Among Ohanian's recent high-profile deals has been her work supporting Meta's in-house legal team with talent deals for the launch of AI chatbots embodying cultural icons, celebrities and influencers. She also handled negotiations for Amazon in connection with the services and rights agreements for "Candy Cane Lane."


DOREEN MARIE OLSON

Founding Partner
Meyer, Olson, Lowy & Meyers

Doreen Marie Olson is co-founder and partner at Meyer, Olson, Lowy & Meyers, a family law firm located in Century City and Irvine. Olson has been certified as a specialist in family law by the Board of Legal Specialization of the State Bar of California. Olson helped establish MOLM as one of the nation's most respected firms working in the arena of high-asset and high-conflict family law matters and is frequently appointed as minors' counsel.

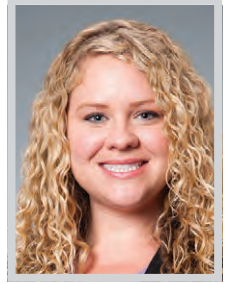
For 30 years, Olson has worked exclusively in family law. During this time, she has brought more than a hundred cases to a successful conclusion for her clients.


PALOMA PEREZ-MCEVOY

Partner & Co-Chair,
Municipal Law Practice Group
Olivarez Madruga Law Organization,
LLP

With nearly two decades of experience in the legal field, Paloma Perez-McEvoy is passionate about serving vulnerable, overlooked and underrepresented communities. Currently a partner and co-chair of the Municipal Law practice group at Olivarez Madruga Law Organization, LLP (OMLO), Perez-McEvoy brings more than 20 years of public policy, planning and land use, and government relations experience to the firm.

Perez-McEvoy advises clients on planning and zoning laws, compliance with the California Environmental Quality Act, and other municipal affairs. She also has experience drafting ordinances and negotiating development agreements.


AMY PROCTOR

Partner
Irell & Manella LLP

Amy Proctor, a partner at Irell & Manella LLP, advises clients on complex IP issues across a range of technologies, and has helped obtain hundreds of millions of dollars in actual payments for patent owners, with over \$3 billion in recent jury verdicts. She also defends clients against patent infringement claims.

Proctor works with a uniquely multidisciplinary approach that unites scientific and technical tools with legal and economic frameworks. Proctor has particular expertise in proving patent damages, making her a valuable member of teams handling high-stakes technology litigation battles. She applies innovative scientific and econometric approaches to quantify the benefits created by clients' inventions, and then distills those inventions into value that is easily recognized by judges and juries.

REGISTER TODAY!

LOS ANGELES BUSINESS JOURNAL

WOMEN'S LEADERSHIP SYMPOSIUM & AWARDS 2024



THURSDAY, JUNE 13

InterContinental Los Angeles Downtown | 8:00AM - 2:00PM PST

The Los Angeles Business Journal is excited to host the **2024 WOMEN'S LEADERSHIP SYMPOSIUM & AWARDS**.

Join us for the annual Women's Leadership Symposium & Awards, a half day event of inspiration, education, and recognition. The top businesswomen in Los Angeles will share their wisdom through a series of dynamic discussions during the breakfast symposium covering topics such as leading with authenticity, advice to the younger generations, embracing technology and innovation, and much more. Then, the awards luncheon will honor the women in Los Angeles making a difference in our Community of Business™.

Register at labusinessjournal.com/events/wlsa2024

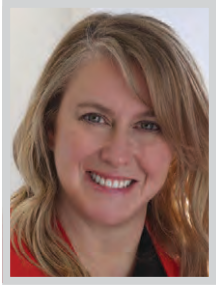
PLATINUM SPONSORS



GOLD SPONSORS

American Cancer Society | CBIZ MHM | David Nazarian College of Business and Economics at CSUN | Fifth Third Bank | IMA Financial Group
L.A. Care Health Plan | McDermott Will & Emery | PNC Bank | Withum

WOMEN OF INFLUENCE: ATTORNEYS



LAURA REATHAFORD
Partner in Charge
Lathrop GPM LLP

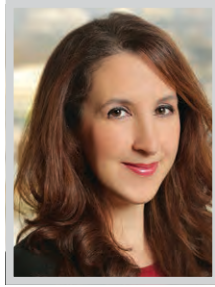
Laura Reathaford is an accomplished employment litigator who has led Lathrop GPM's California-based labor and employment group from its Los Angeles office since 2019. She was appointed partner in charge of the LA office in January 2023. Reathaford is widely respected by her peers in the legal field and is known for her impressive track record in "bet-the-company" cases, litigating hundreds of wage and hour class and collective actions with a particular emphasis on class actions and representative actions under California's Private Attorneys General Act (PAGA). Clients keep returning to Reathaford and recommending her to their peers because she takes a unique approach to California litigation.



ANGELA REDDOCK-WRIGHT

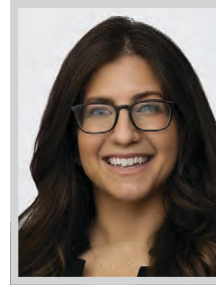
Mediator, Employment & Title IX Law
Signature Resolution / Reddock Law

Angela Reddock-Wright is a leading employment and Title IX mediator and neutral with Signature Resolution. She has practiced employment and labor law for nearly 30 years. After working as an employment litigator for 15 years, in 2011, Reddock-Wright began her path as a full-time neutral. Reddock-Wright is a graduate of UCLA School of Law and Amherst College and received her training as a mediator from the Strauss Institute for Dispute Resolution at the Pepperdine University School of Law. She is a past president of the Southern California Mediation Association and is a member of the panel of mediators with the US District Court, Central District of California. She is also an adjunct professor at USC Gould School of Law.



CHRISTINE REILLY
Leader and Partner
Manatt, Phelps & Phillips, LLP

As leader of Manatt, Phelps & Phillips' Consumer Protection and Advertising and Telephone Consumer Protection Act Compliance and Class Action practices, Christine Reilly is one of the industry's most prominent attorneys for consumer protection issues, such as false advertising law and unfair competition law as well as federal and state automatic renewal laws. She boasts an impressive record defending companies against class action lawsuits with the distinction of never having a class certified against a client (with the exception of voluntary class settlements). Reilly holds a reputation for resolving cases at early stages, but she is also sought after for her uncanny ability to resolve and/or litigate particularly tough cases that have evaded resolution.



ARIEL ROBINSON
Executive Partner, Century City Office
Holland & Knight

For 15 years, Ariel Robinson focused on "dirt law," advising clients on major commercial real estate transactions. When COVID-19 blew a hole into her clients' industry, Robinson stepped up to lead her commercial real estate boutique through the crisis. She and her counterparts on the executive committee of her prior firm eventually negotiated a merger with Holland & Knight, a full-service law firm where she now leads the 42-lawyer Century City office and continues to guide her clients through deals regularly reaching into nine figures. Robinson is now executive partner at Holland & Knight's Century City office. She is one of eight women executive partners firmwide, three of which hold this leadership role in the firms west coast offices.



AMY RUSSELL
Partner
Ervin Cohen & Jessup LLP

Amy Russell is a partner in the Litigation Department at Ervin Cohen & Jessup. Her practice focuses on general commercial litigation. Russell has represented clients from a wide range of industries in cases involving issues related to real estate, construction, employment, entertainment, professional malpractice, corporate governance and breach of fiduciary duty. She regularly works in both state and federal court and has experience representing clients at trial, in arbitration and in mediation. Russell's extensive experience and record of success have garnered her attention and accolades from her peers. In her spare time, Russell demonstrates her dedication to her field as a member of the Los Angeles County Bar Association and the Women's Lawyer Association of Los Angeles.



RACHEL FISET

*Women of Influence
Attorneys*

2024

ZFZ Law congratulates all of the esteemed honorees and our partner and colleague Rachel Fiset on being selected by the Los Angeles Business Journal.



WOMEN OF INFLUENCE: ATTORNEYS

**AMELIA SARGENT**

Partner
Willenken LLP

Amelia Sargent is a high-stakes litigator and partner at Willenken LLP, an elite, minority-owned and majority-women trial and litigation boutique, where she leads complex commercial and trade secret cases for top companies and their executives. A deep thinker and intuitive strategist, clients turn to Sargent for her steady judgment, incisive arguments and ability to weave the law and facts into a winning narrative.

Sargent's 13 years of trial and appellate experience includes stand-up roles at multiple trials, appellate briefing, an argument before the Ninth Circuit, and three Supreme Court amicus briefs. Recently, she orchestrated and led the strategy for the damages phase of a high-profile drug shortage trial for pharmaceutical company AbbVie in Delaware Chancery Court.

**SUSSAN SHORE**

Shareholder; Managing Director
Weinstock Manion

Sussan Shore is managing director and shareholder of Weinstock Manion, one of the nation's top standalone estate planning law firms. With over 46 years of experience, Shore continues to lead the firm to new heights. She and her partners represent scores of notable celebrities, executives, and other high-net-worth clients, and she designs and implements multi-generational estate plans for this high-profile roster of clientele.

Shore also has a large estate and trust administration practice, in which she represents both fiduciaries and beneficiaries. She utilizes her estate and gift tax expertise to both prepare the necessary tax returns and defend them in complex IRS examinations.

**ASHLEY SIMONSEN**

Partner
Covington & Burling LLP

As a partner in Covington's Class Action and Mass Torts practices based in Los Angeles, Ashley Simonsen has successfully represented clients in the technology, financial services and consumer products industries — including Afterpay, Aristocrat Technologies, Capital One, City National Bank, Clorox, Intuit, JPMorgan Chase, Meta, Mondelez, Navient, OpenSea and PayPal — through all stages of litigation, with a strong track record of success on early dispositive motions.

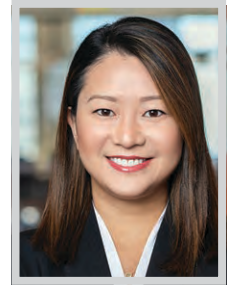
Simonsen's has represented Meta in numerous high-profile matters, including two class actions brought by former content moderators for Facebook; an advertiser class action challenging alleged "fake clicks" on Facebook; and over 1000 product liability, public nuisance, and state attorney general lawsuits.

**SHERRY SKIBBE**

Shareholder
Vedder Price

Sherry Skibbe is a shareholder at Vedder Price and a member of the Labor & Employment group in the firm's Los Angeles office. Skibbe is an experienced litigator with a strong record of success in representing global clients in the defense of complex class, collective and representative actions and high-risk lawsuits, including claims alleging misclassification of employees as exempt or as independent contractors.

Skibbe also has extensive experience in "off the clock" work including matters involving alleged unpaid training time, security checks and regular rate violations; denied reimbursements; miscalculation of commissions and bonuses; failure to pay prevailing wages; and meal and rest break violations.

**ALICE CHEN SMITH**

Managing Partner
YOKA | SMITH, LLP

Alice Chen Smith is the managing partner of YOKA | SMITH and is an experienced trial lawyer who has successfully tried many cases to verdict. Her primary focus is litigating catastrophic personal injury cases, products liability and business litigation matters. She practices throughout the State of California in trial and appellate courts.

Smith was inducted into the American Board of Trial Advocates as a member of the Los Angeles Chapter in 2019, and currently serves as the membership co-chair. She is the secretary-treasurer of the Association of Southern California Defense Counsel and will be its president in 2026. She has served on the Los Angeles County Bar Association President's Advisory Committee on Women in the Legal Profession since 2018.

Congratulations!

Partner Laura Reathaford has been selected for the Women of Influence: Attorneys list by the Los Angeles Business Journal.

Congratulation on this well-deserved honor.

Working together,
we build exciting futures.



Laura Reathaford
310.789.4648
laura.reathaford@lathrogpm.com



LATHAM & WATKINS LLP

Defining Experience and Commitment



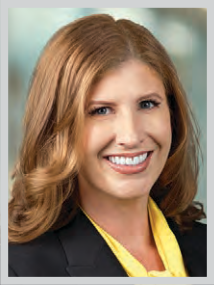
Julie Crisp
Partner, Executive Compensation,
Employment & Benefits

Congratulations to our partner **Julie Crisp** and all of this year's *Women of Influence* honorees.

Julie embodies the talent and culture of Latham, advising clients on complex employee benefits and executive compensation issues while also providing valuable leadership at our firm and in the local community.

LW.com

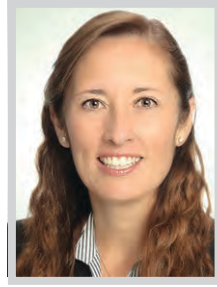
WOMEN OF INFLUENCE: ATTORNEYS

**LAURA SMOWE***Partner*

Munger, Tolles & Olson LLP

The world's most prominent companies, including Amgen, Facebook and Snap look to Laura Smolowe to guide them through their thorniest legal matters with a creative, determined and steadfast hand—leading major trials and internal investigations and negotiating favorable resolutions in complex disputes.

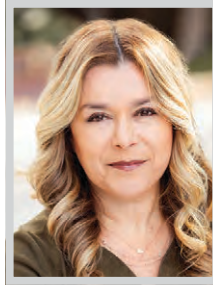
At Munger, Tolles & Olson, Smolowe co-leads the Trade Secret and Employee Mobility Practice Group, co-chairs the Recruiting Committee, and is a member of the firm's Management Committee. Her practice focuses on complex commercial litigation and trials, arbitrations and counseling clients in a wide variety of matters involving trade secrets, privacy, breach of contract, breach of fiduciary duty and fraud.

**ROSE SORENSEN***Partner*

Snell & Wilmer LLP

Rose Sorensen is a corporate and securities partner in the Los Angeles office of Snell & Wilmer. Her practice includes mergers and acquisitions, divestitures, reorganizations, commercial finance, private placements, venture capital, corporate governance, telecommunications services, joint ventures, licensing, and entity structure and formation. She has experience handling a range of large-scale mergers and acquisitions, project and corporate financings, and restructurings in a variety of industries including the technology, healthcare, food and beverage, manufacturing, retail consumer brand, business services, construction, and building materials.

Sorensen's background includes serving as general counsel of a private cable operator and internet service provider.

**RITA SOSTRIN***Founding Partner*

Sostrin Immigration Lawyers, LLP

For over 25 years, Rita Sostrin's novel strategies to the most complex immigration law cases have ensured that top international talent in a variety of fields can come to California to work, live, and help Los Angeles maintain its status as a critical center of creativity and commerce.

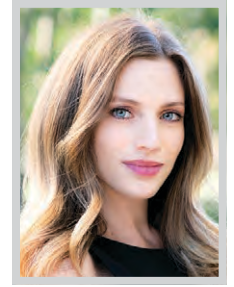
Sostrin's work has enabled thousands of gifted entertainers, doctors, academics, engineers, designers and entrepreneurs to obtain immigration benefits. Through her work focusing on visas for the immigration of individuals with extraordinary abilities, Sostrin has established an exceptional record of winning the most intricate and demanding cases. Consequently, she is frequently sought out by members of the legal community for her counsel.

**STACEY SULLIVAN***Partner*

Hill, Farrer & Burrill LLP

Stacey A. Sullivan practices as a partner in the areas of real estate law, general business and corporate law, taxation and estate planning. Sullivan provides clients with comprehensive legal advice as they negotiate and execute business and real estate transactions.

Sullivan's practice involves the representation of property owners, borrowers, lenders and tenants in a variety of commercial real estate transactions, including real estate acquisitions, dispositions, finance, leasing, land use, construction and development. Her real estate practice involves advising in tax-deferred exchanges of real property, under Internal Revenue Code Sections 1031 and 1033. She has significant experience in advising her clients concerning issues involving property contaminated by hazardous materials.

**CASEY SYPEK***Partner*

Miller Barondess, LLP

Casey Sypek is a business litigator admitted in California and New York. She has had success at every stage of litigation representing clients in a variety of commercial matters, including breach of contract, fraud, employment, copyright, trademark, entertainment and false advertising disputes.

Sypek is lead counsel for plaintiff the County of Los Angeles in a lawsuit alleging a years-long bribery and kickback scheme involving a high level public official and County employee, and several groups of major real estate developers and their corporate entities, who allegedly bilked the County out of hundreds of millions of public dollars to line their own pockets at the expense of innocent taxpayers. Sypek recently intervened in a federal qui tam action.



We applaud **Sussan Shore** on her recognition as one of the *Los Angeles Business Journal's* 2024 "Women of Influence: Attorneys."

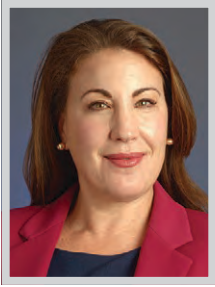
It is with great pride and heartfelt appreciation that we thank Sussan for her outstanding leadership and professionalism.



weinstocklaw.com

ESTATE PLANNING | WEALTH TRANSFER PLANNING | ESTATE & TRUST ADMINISTRATION | ESTATE & TRUST LITIGATION
BUSINESS SUCCESSION PLANNING | CHARITABLE PLANNING

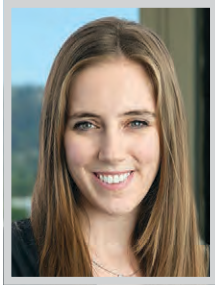
WOMEN OF INFLUENCE: ATTORNEYS



ALLYSON THOMPSON
Partner
Kaufman Dolowich LLP

Allyson Thompson’s nearly 20-year legal career and tireless service to her community are prime examples of what it means to be a woman of influence who strives to improve her community. She has a strong track record of advising employers through a wide range of employment litigation matters as a partner in Kaufman Dolowich’s Los Angeles and Torrance offices.

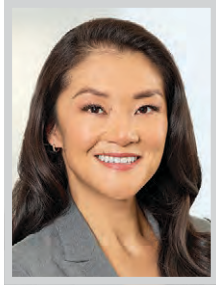
Thompson is a trial lawyer who focuses her practice on all aspects of employment litigation including the Fair Employment and Housing Act; Title VII claims including race, national origin, age, gender, sex discrimination, sexual harassment; hostile work environment and retaliation; wrongful termination in violation of public policy; whistleblower actions; and breach of contract claims.



CATHERINE VEENEMAN
Partner
Ervin Cohen & Jessup LLP

Cate Veeneman is a partner in Ervin Cohen & Jessup’s Litigation Department, specializing in complex commercial, employment and construction litigation. She has represented a broad range of clients, from individuals and rising companies in the real estate and hospitality industries to national retail companies and lending institutions. Veeneman regularly works in both state and federal court.

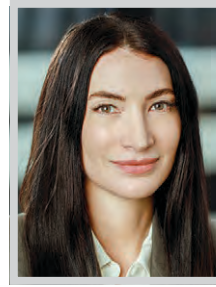
Veeneman has published several articles on class action as well as food and beverage legal issues. She has also given several presentations in the Los Angeles community regarding employment legal issues, including an analysis on the effect recent changes in California law has had on employee classification.



JENNIE WANG VONCANNON
Partner
Crowell & Moring LLP

Jennie Wang VonCannon joined Crowell’s White Collar and Regulatory Enforcement and Privacy and Cybersecurity practices in October 2022. She is a highly accomplished trial lawyer and advisor with a strong record of success in both legal and corporate arenas. With over a decade of experience as a federal prosecutor, including serving as deputy chief of the Cyber and Intellectual Property Crimes Section, she excels in corporate defense, cybersecurity, and IP matters.

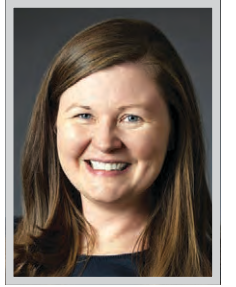
VonCannon is a resource for clients facing crises, providing guidance on litigation, internal investigations, law enforcement inquiries, cybersecurity incidents and regulatory matters.



NATALIE WEATHERFORD
Partner
Taylor & Ring

Described as having “a fire in her to protect victims,” Natalie Weatherford has entirely devoted her practice to championing victims of sexual abuse and taking on the powerful institutions that try to silence them in the process. Her work with children and adults has led to record-breaking verdicts and settlements against individuals, large corporations and school districts and administrators –people they were supposed to be able to trust and failed to act on sexual misconduct allegations.

When defense attorneys try to intimidate a victim and dig up personal history, Weatherford takes on the role of protector. She has a unique ability to control questioning, so her client has the confidence to continue, combining assertiveness with deep empathy.



EVIE WHITING
Partner
Sidley Austin LLP

Evie Whiting is a trusted adviser who brings a unique blend of complex, highly technical deal work with a deep entertainment, sports, and media knowledge base. Her practice spans debt finance (term loans, ABLs, production credit facilities, single picture financings, financing for sports and other live events, stadium financing); structured finance; collateral, security and intercreditor issues; pure-play entertainment transactions (co-financing agreements, co-production agreement, distribution agreements, content acquisition, rights sales, licensing arrangements, first looks); and stadium and arena development.

Whiting’s clients include A24 Films, Imagine Entertainment, Spyglass Media Group, Monumental Sports & Entertainment, Artists’ Equity, and The Gersh Agency, among others.

YOKA | SMITH



YOKA | SMITH congratulates our firm’s managing partner, **ALICE CHEN SMITH** on being selected as one of the Women of Influence: Attorneys by the Los Angeles Business Journal.

yokasmith.com

NOMINATE TODAY!



LOS ANGELES BUSINESS JOURNAL
HEALTH CARE
2024 LEADERSHIP AWARDS

KNOW AN OUTSTANDING HEALTH CARE LEADER?

Join the Los Angeles Business Journal in recognizing the accomplishments of the health care leaders providing better quality health care in LA.

Nominate an individual or organization for the 2024 Health Care Leadership Awards today!

NOMINATION DEADLINE
FRIDAY, JUNE 14

To nominate, please visit
labusinessjournal.com/events/hclawards

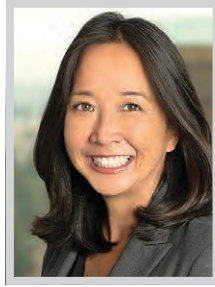
WOMEN OF INFLUENCE: ATTORNEYS

**CHRISTINE WOODIN**

Partner
Hueston Hennigan LLP

Christine Woodin focuses her active practice on intellectual property, including patent litigation and other high-stakes disputes. She has experience in all aspects of these cases, including counseling on pre-suit strategy, conducting effective offensive and defensive discovery, deposing witnesses and defending depositions, drafting dispositive and pre-trial motions, preparing for trial, presenting witnesses at trial and handling appeals. She has managed and developed the strategy for cases of all sizes in a variety of industries—from global licensing disputes to single patent assertions.

Recently, Woodin secured a series of wins for clients in technology cases. Among these was a complete defense verdict of no infringement and invalidity representing ClearOne Inc.

**STEPHANIE YONEKURA**

Global Head of Investigations,
White Collar and Fraud
Hogan Lovells US LLP

Stephanie Yonekura is the global head of Hogan Lovells' Investigations, White Collar and Fraud practice. She was previously Acting US Attorney in the US Attorney's Office for the Central District of California. Under her leadership, the office investigated the hacking of one of the world's largest entertainment companies, reportedly by a foreign government. Having served as a federal prosecutor for over 14 years, Yonekura knows the issues considered in government investigations.

In private practice, Yonekura uses her experience in the trenches, in the courtroom and as the chief law enforcement officer in Los Angeles to help clients understand key issues, investigate matters strategically and surgically, and defend clients before law enforcement agencies around the world.

**CANDICE ZEE**

Shareholder
Vedder Price

Candice Zee is a shareholder at Vedder Price and a member of the Labor & Employment practice area in the firm's Los Angeles office.

Throughout her career, Zee has represented and defended numerous multi-state and international corporations on all aspects of employment litigation, including allegations of discrimination, retaliation, harassment, defamation, and intentional infliction of emotional distress. Zee has won a number of cases on summary judgment for her clients, several of which are non-profit hospital clients. She also recently won an appeal of a summary judgment motion granted in favor of a non-profit hospital client who was sued for wrongful termination, age discrimination and retaliation.

**ANNITA ZHONG**

Partner
Irell & Manella LLP

A partner at Irell & Manella, Annita Zhong focuses on patent litigation, contested patent office proceedings and licensing in the US, the European Union and China. She has deep experience litigating before federal and state courts, the International Trade Commission, arbitral panels and the Patent Trial and Appeal Board.

Dr. Zhong's engineering and research background enables her to digest new technologies quickly and has proven valuable in delivering significant victories for clients in complex litigation. In April 2023, Dr. Zhong co-led the team that scored a \$303.15 million verdict for Netlist in a suit against Samsung involving five patents relating to computer memory technology.

**LAURA ZWICKER**

Partner; Chair,
Private Client Services Group
Greenberg Glusker

Laura Zwicker crafts the estate planning and philanthropic strategies with the highest level of technical tax expertise for high profile, ultra-high net worth individuals and families with interests, assets and family members across the globe. Her representations necessitate seamless collaboration her clients' teams of domestic and international advisers. She has special expertise in advising industry talent clients, including actors, directors, producers and writers, with a focus on the unique privacy, intellectual property and valuation issues facing these public figures.

As chair of Greenberg Glusker's nationally recognized Private Client Services Group, Zwicker advises individuals and families on cross-border and domestic tax, philanthropic and estate planning issues and business succession planning.

Congratulations to
**Paloma
Perez-McEvoy**
on her selection to the
Los Angeles Business Journal's 2024
"Women of Influence: Attorneys" list.



OMLO