

# LEADERS OF INFLUENCE: Nonprofit & Philanthropy



**T**HERE ARE MANY IMPACTFUL ORGANIZATIONS HERE IN LOS ANGELES COUNTY DOING INCREDIBLY IMPORTANT work, and the leaders behind those organizations are essential contributors to the fabric of our community. They steward their teams through a delicate balance of running a business while selflessly serving essential and worthy causes.

In this section, we acknowledge some of the leading lights of the nonprofit sector – inspirational individuals who have stepped up to provide examples of forming powerful partnerships and developing strategies to better meet the many needs of our community and beyond.

We've alphabetically compiled this lineup of superb nonprofit leaders, along with information about their careers, roles and relevant accomplishments they've achieved. Congratulations to these outstanding trail blazers who made our class of '23.

*Methodology: The professionals featured in these pages did not pay to be included. Their profiles were drawn from nomination materials submitted to the Los Angeles Business Journal. Those selected for inclusion were reviewed by the editorial department. The professionals were chosen based on a demonstration of impact made on the profession and on the Los Angeles community.*



LOI: NONPROFIT & PHILANTHROPY



**ANOUSHEH ANSARI**  
*Chief Executive Officer*  
XPRIZE

Anousheh Ansari, CEO of Los Angeles-headquartered XPRIZE, became the first Iranian and first self-funded woman to fly to the International Space Station nearly 17 years ago, and has dedicated her time since that journey to doing everything in her power to protect the blue planet she admired from space.

Ansari was co-founder and CEO of Telecom Technologies Inc. (TTI), which grew into a \$1.2 billion company, the success of which launched her family’s role as philanthropists and allowed her to turn her attention towards the stars. Ansari and her family sponsored XPRIZE’s first competition, the Ansari XPRIZE, a \$10 million competition that ignited a new era for commercial spaceflight. Since then, she has served on XPRIZE’s Board of Directors, and in 2018, became the organization’s CEO. Over her tenure at the helm, Ansari has shifted XPRIZE’s strategic vision and broadened its global impact.



**BARRY ARBUCKLE, PH.D.**  
*President and CEO*  
MemorialCare

Barry Arbuckle, Ph.D. is president and CEO of MemorialCare, a leading Southern California nonprofit integrated health care system with over 230 sites of care. Under his leadership, MemorialCare has experienced unprecedented growth, financial performance and is leading health care through innovative partnerships to deliver best practice medicine and improve community health. Today, MemorialCare has more than 12,000 employees, affiliated physicians and volunteers, serving several award-winning hospitals and facilities.

Under Arbuckle’s stewardship, MemorialCare has become a leader in value-based contracting; integration of ambulatory care, behavioral health, and oral health; and the advancement of healthcare reform. He is also a strong advocate for employers seeking high value health benefit options. In addition, he serves as chair of the MemorialCare Innovation Fund, a healthcare innovation investment company.



**ERICA ARIAS**  
*Executive Director*  
Los Angeles Police Museum

Los Angeles Police Museum executive director Erica Arias founded two successful nonprofit and business development consulting firms with targeted focus on governance, business planning, strategic planning, and board development. She has been a champion for small businesses and nonprofits instructing business management and leadership courses in partnership with the University of Southern California. She became the first Mexican American woman to lead one of the four LAPD nonprofit affiliate organizations.

Arias secured \$1.2 million dollars in highly specialized research project funding for special projects under the dean of the faculty’s office at Claremont McKenna College. She successfully reconstructed the Los Angeles Police Museum’s fiscal planning and business structure through innovative budget revisions and thoughtful partnerships. She has lead successful campaigns for consulting clients resulting in a collective \$2.5 million raised in two years.



**MICHELE BROADNAX**  
*President & CEO*  
Los Angeles Education Partnership

Michele Broadnax came to Los Angeles Education Partnership (LAEP) in 2019 as the organization’s first African American president and CEO. She has over 30 years of experience in nonprofit leadership. As a 6th generation community builder, Broadnax comes from a long line of activists and educators, including her great-great grand aunt Winnie Shenkle who became a teacher after being the first person in her family to get a college degree.

Under Broadnax’s stewardship, LAEP’s mission is to advance educational equity. Together with families, schools, and the community, LAEP facilitates access to and opportunities for quality educational and wellness practices so that children thrive from diapers to diplomas. Over her four-year tenure at LAEP, Broadnax has doubled the organization’s operating budget from \$6 million to over \$17 million. As a result of her fundraising efforts, LAEP has significantly increased its service reach.



 **DOHENY  
EYE INSTITUTE**  
*Proudly affiliated with*  **Stein Eye Institute**

Doheny Eye Institute is at the forefront of advancing vision science and improving lives.



doheny.org



# LIFE READY THROUGH SPORT

Thank you to our community partners for helping bring kids the lifelong benefits of sport & play.

Sport & play build pathways to success and well-being. Join the **Play Equity Movement**.



**PLAY EQUITY**<sup>TM</sup>  
**FUND**

established by **LA84**<sup>TM</sup>  
Foundation

📷 X [playequityfund.org](https://playequityfund.org) #PlayEquityNow



LOI: NONPROFIT & PHILANTHROPY

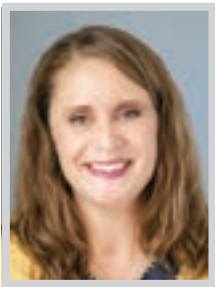


JUDITH BROOKS

Executive Director, Called to Renew Campaign;  
Director, Office of Archbishop's Special Services  
Archdiocese of Los Angeles

Judith E. “Judy” Brooks serves as the director of the Archbishop’s Office of Special Services for the Archdiocese of Los Angeles. Brooks works in concert with the Archbishop of Los Angeles to plan, design and implement a variety of special programs and projects, international pilgrimages, development activities, special events, and connections to those whose time, talents and treasure ensure the vitality of the Archdiocese. She oversees planning of the annual Priest Convocation, Presbyteral Day, the Chrism Mass Dinner and many other clergy-related events and activities.

Brooks has been instrumental in the annual Cardinal’s Awards Dinner, which honors and celebrates extraordinary Catholic lay leaders who are committed to serving the communities and world in a myriad of ways. This annual event helps raise funds that benefit many organizations such as Catholic Charities, food banks, family and homeless shelters, Catholic education, the mentally ill, pregnancy help centers and much more.

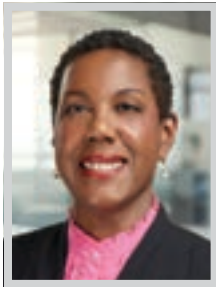


JULEE BROOKS

Chief Executive Officer  
Woodcraft Rangers

Julie Brooks’ commitment to creating positive impact in the lives of those she serves infallibly guides her decisions at the helm of the institutions she has served, including Woodcraft Rangers. Founded on the pillars of access and inclusion, Woodcraft Rangers has sought to provide youth of all backgrounds with the quality experiences that support holistic development.

Brooks’ tireless leadership of Woodcraft Rangers has propelled the organization from a \$10 million operating budget when she joined the agency in 2019 to \$21,162,000 in 2022 to over \$32 million in FY24, enabling it to maximize impact for the families and communities most impacted by pandemic-induced school closures. While post-pandemic challenges have faced LA’s lowest-income communities, Brooks’ dedication, foresight, and keen ability to leverage resources has allowed the organization to greatly expand its service offerings and better serve the increasingly complex and significant needs of children, youth and families.



KIMBERLY BROWN

Principal Broker  
IMPACT Realty Advisors, Inc.

Kimberly Brown, principal broker at IMPACT Realty Advisors, Inc., is personally branded as a catalyst around bridging the equity gaps in commercial real estate and urban communities like South Los Angeles - including social, health, wealth, capital, housing, environmental, climate and energy. Professionally, she’s a broker of people, access to capital, land and rooftops. Brown has utilized her broad skill set and network to facilitate delivery of platform services for institutions, private equity investors and global occupiers.

Her leadership as president of the African American Real Estate Professionals Los Angeles Chapter (AAREPLA) and the forward face of the AAREP National Network of chapters reflects the intersection of the CRE industry and historically overlooked communities. She also brings 20 years of extensive experience in the supplier diversity space and her commitment to ESG initiatives is reflected in her extensive involvement in local and national trade and social impact organizations.



SAUNDR A BRYANT

Executive Director  
All Peoples Community Center

Saundra Bryant has overseen many changes and forward progression, made lifelong friends, and changed numerous lives during her storied tenure at All Peoples Community Center. She was hired by the Center in 1983 as the first African American woman to serve as executive director. She is proud of her commitment to continue to foster community leadership—62% of the staff of 40 are South LA residents, and 84% speak Spanish. She is perhaps most proud of the fact that 43% of staff are former participants.

Bryant will retire from her lifetime of service (40 years as All Peoples Community Center’s executive director), following a September 28 gala and celebration. Bryant has spent her 40-year career being intensely involved with both community and industry associations and nonprofits while concurrently serving as executive director of the Center, which is a nonprofit that supports the Vernon Central community of South Los Angeles.

LEADERS of INFLUENCE: NON-PROFIT and PHILANTHROPY

Congratulations

Michael Sullivan

Vice President  
Luskin Orthopaedic Institute for Children

Your dedication and leadership have helped secure resources to provide high-quality orthopaedic care to many underinsured children. Thanks to your efforts, these children face a brighter, healthier future.

THE LUSKIN Orthopaedic Institute for Children

IN ALLIANCE WITH UCLA Health

To learn more about LuskinOIC’s mission and work, please visit [LuskinOIC.org](https://LuskinOIC.org)

LOI: NONPROFIT & PHILANTHROPY



CRAIG CARBONNIERE

President

Hospitality Sales & Marketing Association  
International, Los Angeles Chapter

Craig Carbonniere’s unwavering commitment to advancing the hospitality industry through education and networking events has been truly impactful. Under his guidance, HSMAI Los Angeles has flourished into a dynamic and influential nonprofit organization, serving as a valuable resource for professionals and businesses in the hospitality sector. His strategic vision and ability to motivate and engage others have elevated the organization’s profile and positioned it as a leader in the industry.

One of Carbonniere’s greatest strengths is his ability to foster meaningful connections among professionals. Through HSMAI Los Angeles, he has created a vibrant and inclusive community where individuals can unite, exchange ideas, and collaborate on initiatives that drive growth and excellence. His passion for fostering personal and professional development in others has empowered countless individuals to reach their full potential, resulting in a stronger and more connected hospitality industry in Los Angeles.



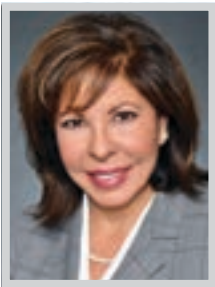
CHRISTOPHER CLINTON CONWAY

Chief Executive Officer

Dr. Susan Love Foundation for  
Breast Cancer Research

As a foundation CEO and program officer at three high-profile Los Angeles not-for-profit organizations over the past two decades, Christopher Clinton Conway has had a profound impact across the arts, health and sciences.

Over the past five years, Conway has provided leadership in every aspect of the work of the Dr. Susan Love Research Foundation at a time when the acceleration of technology has made it possible to realize much of the visionary work of the founder to end breast cancer. He is the director of a \$20 million dollar campaign to support studies demonstrating the use of AI and advanced imaging in the detection of breast cancer, both now being realized with next-generation life-saving imaging for diagnosing breast cancer launched here in Los Angeles. The debut of the first-in-class QT imaging center here in LA is possible because of Conway’s management of the rigorous FDA process.



CHARLENE DIMAS-PEINADO

President & CEO

Wellnest

Charlene Dimas-Peinado, L.C.S.W., E.M.L., joined Wellnest in 2016 as its new president and CEO, to lead the nationally recognized trauma informed behavioral health organizations in Los Angeles into its next phase. Throughout her career, Dimas-Peinado has been inspired by the communities and people she serves. Her objective is to make a positive impact on those Wellnest serves and to improve individual lives as well as the life of the community.

Dimas-Peinado holds a Master of Leadership from University of Southern California, and a Master of Social Work from California State University, Long Beach. In 2022, she was appointed to the California Interagency Council on Homelessness Advisory Committee by the Business, Consumer Services and Housing Agency Secretary and California Health and Human Services Agency Secretary. In 2015, she was appointed to the Board of Governors for the Natural History Museum by Los Angeles County Supervisor Hilda L. Solis.



MICHAEL FLOOD

President, CEO

Los Angeles Regional Food Bank

Under Michael Flood’s visionary leadership, the LA Regional Food Bank has addressed immediate hunger and focused on providing healthier and more nutritious food options to those in need. Throughout his tenure, Flood prioritized the distribution of fresh produce, healthy proteins, and other nutritious items, significantly increasing the Food Bank’s capacity to provide balanced meals to vulnerable populations. By ensuring access to healthy food, Flood has profoundly impacted the well-being and long-term health outcomes of countless individuals and families in the Los Angeles community.

Flood’s commitment to providing healthy food options is particularly significant when addressing food insecurity during times of crisis. His strategic initiatives during the COVID-19 pandemic exemplified his dedication to serving the community, as he inspired and mobilized the Food Bank’s staff, volunteers, and partners to tackle the surge in food insecurity head-on, serving approximately 900,000 people monthly.



So more kids  
find their  
greatness.

Think Together partners with schools to provide academic and enrichment programs so that students have the opportunity to discover their talents, unleash their possibilities and envision their brightest future.

For more information visit [thinktogether.org](https://thinktogether.org)  
Or scan the QR code below





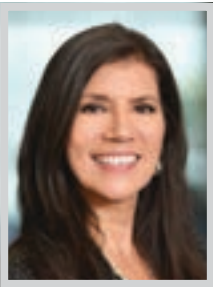
LOI: NONPROFIT & PHILANTHROPY



**MINDY FREEDMAN**  
*Founder*  
The SAM Initiative

The SAM Initiative’s objective is to educate and engage donors by investing in community-based organizations that address the most pressing needs in our community. As a giving circle, we pool our financial resources and expertise to drive social change and nonprofit sustainability. The SAM Initiative serves as a catalyst to improve the lives of women, children, and families in Los Angeles through engaged philanthropy.

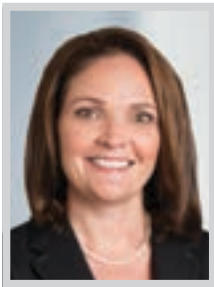
Founded in 2013 by social entrepreneur and philanthropist Mindy Freedman, SAM has evolved into a strong, supportive and responsive community, committed to learning and working together to make a difference. Freedman and team’s fundamental belief is that through collaborative giving we can do far more together than we can do alone. As of 2023, The SAM Initiative has given over \$3 million in grants to the community, and its influential collective spirit and network reaches far beyond the grants.



**MARISSA GOLDBERG**  
*Chief Executive Officer*  
Doheny Eye Institute

As CEO of Doheny Eye Institute, Marissa Goldberg has made an indelible mark in vision care throughout the Los Angeles area, and in affiliation with UCLA’s Stein Eye Institute, helps lead Doheny’s mission to further the conservation, improvement, and restoration of human eyesight.

During her 30 year career at Doheny, Goldberg held a variety of roles including human resources director, quality improvement coach, CAO, vice president, COO, and executive director before being named CEO. Through her business guidance, she and the Doheny Board of Directors worked tirelessly to forge a new, powerful alliance and ensure a smooth union between Doheny and UCLA, combining the strength, reputation, and distinction of two of the nation’s top eye institutions. Today, Doheny Eye Institute continues to attract top vision scientists in large part due to Goldberg’s leadership. With her guidance and support, the team of physician scientists continue to make transformative discoveries.



**COLLEEN HART**  
*Partner*  
Proskauer

Colleen Hart stands out in the legal profession as a partner in the Tax Department and a member of the Employee Benefits & Executive Compensation Group, where her work has made a significant impact on businesses, executives, and boards.

Beyond her professional accomplishments, Hart’s service to the community through the LA County Bar Association’s Counsel for Justice (CFJ) board since 2016, including two terms as president in 2021-2023, has been exceptional. Also, Hart’s advocacy for veterans, drawn from her own experience as a U.S. Navy veteran, is a shining example of her dedication to making an impact beyond her day-to-day work. She has engaged in multiple military discharge upgrade cases and record clearing clinics for veterans. These actions have resulted in the contribution of more than \$62,500 to CFJ and sponsorship of the “Who Are You Remembering” campaign since its inception.



**HERTZEL ILLULIAN**  
*Rabbi; Founder*  
JEM Community Center

Hertzell Illulian is a successful real estate investor and Rabbi. Back in the 1970s he saved more than 3000 minority-group children from the violence and political turbulence occurring in Iran and at great personal risk. Today many of those children have American families of their own and are highly accomplished pillars of the American community.

Since these heroic actions, Illulian has found other ways to support the community and do good. He saved the Beverly Hills YMCA and established the JEM Community Center, an athletic center and educational institute for all faiths and ethnicities to look after their mind, body and spirit. Illulian provides mentorship to teenagers, runs a suicide prevention program, a drug prevention program and multiple recreational activities. The JEM Center boasts a basketball court, arcade games room, kids playroom, indoor swimming pool, arts and crafts rooms and a yoga and martial arts studio.



**COLLABORATIVE  
COMPASSIONATE  
& CATHOLIC**

**Date:** February 2, 2024  
**Time:** 11:30 AM - 1:30 PM  
**Location:**  
Cathedral of Our Lady of the Angels  
555 W. Temple Street  
Los Angeles, CA 90012

**Rick Caruso**  
CARUSO

**Fr. Greg Boyle**  
HOMEBOY  
INDUSTRIES

**Maria S. Salinas**  
LA CHAMBER OF COMMERCE

**TO LEARN MORE PLEASE VISIT [ELLUNCH.ORG](http://ELLUNCH.ORG)**

LOI: NONPROFIT & PHILANTHROPY



**LEE ANN KLINE**  
*President & Founder*  
STEM Advantage

Lee Ann Kline began her career as a programmer at IBM. As a mathematics and computer science major and first-generation college student, she was keenly aware of the lack of women in her field and the need for role models and mentors. As her career progressed and she became a consultant at EY, she observed firsthand the lack of gender and racial diversity in technology organizations she served. Inspired to create change, Kline leveraged her network to create STEM Advantage in 2012. She left her corporate role at EY in 2020 and is focused on STEM Advantage full-time providing in-kind professional services. STEM Advantage “levels the playing field” by empowering talented students, who are mostly first-generation college students from low-income families, with access to networks, employment, and economic mobility that is overwhelmingly limited to students attending private or elite public universities.



**STEPHANIE LOMIBAO**  
*Philanthropy Program Executive*  
Bank of America Charitable Foundation

For more than 20 years Stephanie Lomibao has followed her passion for helping others through her career leading philanthropic initiatives and programs, fundraising, and overseeing employee volunteerism across public, private and nonprofit sectors in Southern California. Currently, she is philanthropy program executive for Bank of America, one of the world’s largest corporate philanthropies, which awarded over \$360 million in grants to nonprofits and charities last year alone. Lomibao helps ensure hundreds of millions of dollars annually gets deployed to nonprofits on the frontlines of serving the most vulnerable and impoverished communities through economic mobility focused programs addressing food insecurity and providing workforce development and job placement opportunities. She helped create the company’s framework around hunger relief, including leading the Give a Meal program, resulting in over \$20 million donated to a network of more than 200 food banks nationwide.



**LESLEY MARTIN**  
*General Manager, Southeast Los Angeles*  
Think Together

Lesley Martin’s journey with Think Together began in 2009 when she joined as a program leader in Ontario. Her dedication to supporting students and making a difference in their lives quickly became evident, leading to her promotion as a site coordinator in Covina after just two years. In this role, Martin emerged as a strong leader, providing guidance and support to her staff while collaborating with partners to ensure the success of Think Together’s programs. After her impactful tenure in the Inland Empire, Martin transitioned to the Southeast Los Angeles region, where she served in various capacities, including quality assurance coach, director of program and operations, and most recently as general manager. Throughout her time with Think Together, Martin has consistently demonstrated exceptional leadership qualities and an unwavering commitment to the organization’s mission, passionate about the social and emotional well-being of the students, staff, and communities she serves.



**KRISTIN MCGUIRE**  
*Executive Director*  
Young Invincibles

As executive director of Young Invincibles, the nation’s largest young adult policy and advocacy organization, Kristin McGuire leads the charge to amplify the voices of young adults in the political process and expand their economic opportunity. She is a bold change maker who has dedicated her life to ensuring that the most disadvantaged populations have a place in our democracy. McGuire’s accomplishments include shaping policies that protect young Californians as they enter adulthood, such as the College Student Hunger Relief Act of 2016, the California Student Borrowers’ Bill of Rights of 2019 and the Student Civic and Voter Empowerment Act of 2019. Through her work with the LA County Department of Public Health’s Project TRUST, McGuire organized residents to demand that the City Council mandate smoke-free housing and curb secondhand smoke at parks in communities such as Compton. She’s also worked to reduce recidivism of young parolees in LA.

Leaders of Influence:  
Non-Profit and Philanthropy

Greg Sinaiko, and his family, have been one of the most impactful families our non-profit has had the pleasure of engaging with for some time. The Leukemia & Lymphoma Society is one of the leading cancer non-profits in the country, and like others in the community, we rely on the passion, generosity and expertise from our volunteers and donors. Over the last four plus years, it’s safe to say we have relied on Greg immensely. His mission connection to our work runs deep and his insistence that better treatments, better patient support and better access to cutting-edge therapies should be made available to all patients and caregivers.

**Did you know September is Blood Cancer Awareness Month?** LLS does more than fund pioneering research. We’re here to support patients and families through every part of their blood cancer experience — from diagnosis through treatment and beyond. We provide the reassurance, free personalized information and financial assistance they need. And we advocate for policies that break down barriers to care, so it’s more accessible and affordable for those in underserved communities. Please help us raise awareness of blood cancer this month. With your help, we are creating a world where cancer patients not only survive their blood cancer but thrive in their lives after treatment. **#BloodCancerAwarenessMonth #CancelBloodCancer**



The mission of The Leukemia & Lymphoma Society (LLS) is to cure leukemia, lymphoma, Hodgkin’s disease and myeloma, and improve the quality of life of patients and their families. Find out more at [www.LLS.org](http://www.LLS.org).



LOI: NONPROFIT & PHILANTHROPY



**DELORES DRUILHET MORTON**  
*Chief Executive Officer*  
Step Up

Delores Morton is CEO of Step Up, the nonprofit that guides girls, and those who identify with girlhood, to their success. Under Morton's leadership, Step Up supports high school girls and young women through age 29 in becoming confident, connected and career-focused through free mentorship programs.

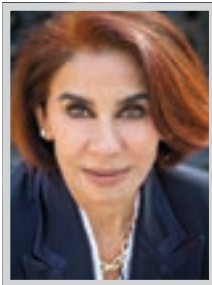
Morton has more than 25 years of experience designing and leading creative enterprises that make a lasting difference. In her first year as Step Up's CEO, Morton masterfully navigated the nonprofit through pandemic challenges to adopt a new five-year strategic vision and expand Step Up's mentorship programs to girls nationwide. She also unveiled programs for young women ages 18-29, marking the first time the organization offered services for those who already graduated from high school. A new program for young women is Power Talks, a multi-year partnership with Kérastase designed to close the confidence gap through mentoring.



**IFUNANYA NWEKE**  
*Executive Director & Founder*  
Jazz Hands For Autism

Ifunanya Nweke began Jazz Hands For Autism in 2014 after seeing the wonderful talent of one of her students on the autism spectrum playing the piano to the rest of his classmates.

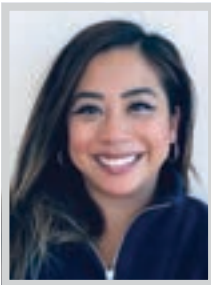
Nweke has since grown the nonprofit to provide musicians on the autism spectrum with 98 classes, opening Jazz Hands for Autism's own music library to provide musicians with direct royalties, growing her team to have multiple coaches that are industry professionals training musicians to be ready to work in the music industry, providing musicians with a job placement coordinator to provide equity opportunities, and coordinating annual concerts for the musicians to showcase their skills to the community. As a leader with vision, Nweke branched out of her role to bring this vision to life for many more talented musicians to have the creative space and support to bring their skills and talent into the music industry.



**ANOOSHEH OSKOUIAN**  
*President and CEO*  
Ship & Shore Environmental, Inc.

Over 22 years since its formation, Ship & Shore Environmental is now one of the leading providers of clean air technologies, which clean our air and environment. As president and CEO, Anooosheh Oskouian directs the corporate strategy for engineering, product development, sales, and fabrication.

Oskouian believes there is a balance between keeping the manufacturing industry alive and keeping the air and environment clean. As a leader in the industry, she is a first in many professional endeavors, setting new standards, implementing new ideas, and constantly thinking of ways to offer innovative solutions for clean air. As a result, Ship & Shore has received numerous awards and has been recognized for many clean air and sustainability initiatives. Using her earned spotlight and recognition to shed light on those who need it the most, Oskouian has also served on the board for Orange County Community Foundation for nine years.



**MICHELLE PAGTAKHAN**  
*Founder*  
You Run This Town Foundation

Michelle Pagtakhan is a dedicated philanthropist and founder of the You Run This Town Foundation, which has impacted the lives of approximately 2,000 youths across Los Angeles. Pagtakhan's commitment to empowering underserved communities has been demonstrated through her numerous programs, including enrichment workshops, work study opportunities, scholarships, and more.

Pagtakhan's You Run This Town Foundation has been able to provide access to education, mentorship, and resources for youth in underprivileged communities throughout Los Angeles. Pagtakhan's programs have helped bridge the gap between low-income communities and educational opportunities, allowing youths to realize their full potential. Pagtakhan has committed her life to improving the lives of young people and has gone above and beyond to provide them with the resources they need to succeed. Her ability to connect with youths, understand their needs, and provide them with the support they need is remarkable.

LOS ANGELES BUSINESS JOURNAL

NONPROFIT SPOTLIGHT

ALIGN YOUR BUSINESS WITH OUR EXTENSIVE **NONPROFIT** PORTFOLIO

The **Los Angeles Business Journal** reaches a high net worth, philanthropic audience that offer the opportunity to dedicate their time and money to your organization. These dedicated Lists, Special Reports and Custom Content offer your organization the opportunity to reach the Primary Donors.

**LISTS**  
Top Gifts  
Highest Paid CEO's & Executives  
Corporate Philanthropy  
Charitable Foundations  
Nonprofits  
Fastest Growing Private Companies

**SPECIAL REPORTS**  
Law Firms  
Corporate Philanthropy  
Who's Who In Real Estate  
Philanthropy  
Fastest Growing Private Companies

**SPECIAL EDITIONS**  
Money  
LA 500  
Wealthiest Angelenos  
2024 Book of Lists

**BRANDED CONTENT**  
Leaders of Influence:  
Nonprofit & Philanthropy  
Giving Guide  
National Philanthropy Day Logo Cover

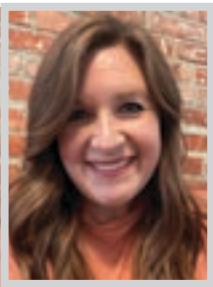
**EVENTS**  
DEI Symposium & Awards  
Nonprofit & Corporate Citizenship Awards  
Women's Leadership Symposium & Awards

For more information and to secure space, please contact [advertising@labusinessjournal.com](mailto:advertising@labusinessjournal.com)





LOI: NONPROFIT & PHILANTHROPY



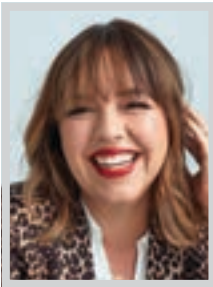
**LAUREN PLICHTA**  
*President & Chief Executive Officer*  
Big Brothers Big Sisters of Greater Los Angeles

Lauren Plichta leads Big Brothers Big Sisters of Greater Los Angeles (BBBSLA) with intention, integrity, and grit. A thoughtful strategist with a heart for youth, Plichta’s service is undergirded by the belief that every child should be equipped to actualize their full potential. BBBSLA’s mission is to create and support one-to-one mentoring relationships that ignite the power and promise of youth, is a foundational part of equipping the youth for the future ahead. BBBSLA has had an exceptional year of accomplishments under Plichta’s leadership. BBBSLA saw an 8% increase in the amount of new youth served; approval by the City of Long Beach to facilitate a new citywide mentoring program, which will connect 100 middle school students (at five middle schools) with City employees during 2023-2024 school year; and BBBSLA was the first nonprofit organization to have a post-pandemic MOU approved by the Los Angeles Unified School District.



**GARY L. POLK**  
*Co-Founder and CEO*  
Polk Institute Foundation

In 2016, Gary Polk became the founder and first executive director of the Innovation Incubator at Cal State University Dominguez Hills. He created a business incubator that not only helped the students, but also entrepreneurs throughout the Los Angeles region. In 2017, Polk created a new course at CSUDH called Entrepreneurship for Everyone. For the next three years, he taught almost 200 students. In 2019, after a successful three and one-half years as ED, Polk resigned and returned to his true passion, teaching full-time. Then, in March 2020, everything seemed to change for the worse with the pandemic. In July 2020, Polk decided to finish the job that was started with the Innovation Incubator, by creating the Polk Institute Foundation. Here, social entrepreneurship companies are endeavors that are purpose-driven. They focus on “People, Planet and Profit” (the “Triple Bottom Line”) and the belief that behaving ethically and generating profits are not conflicting concepts.



**FATIMA DJELMANE RODRIGUEZ**  
*Chief Executive Officer*  
Ronald McDonald House Charities of Southern California

Upon graduating from UT Austin, Fatima Rodriguez began her search for work in the nonprofit sector. She wanted to work for a grassroots organization focused on community building and empowerment. Her search led her to Proyecto Pastoral where she helped build the organization’s infrastructure and established unprecedented financial stability. Rodriguez then transitioned to work as the development director for Camp Ronald McDonald for Good Times in January 2013. She was drawn to the mission of building healthier lives for children with cancer and their families. She was promoted to executive director in 2017, and continued the fundraising success as development director and work with the Camp community to deepen its impact across the board. She was promoted to CEO and on January 18th, 2022. She’s excited to be at the helm of RMHCSC, with a deep passion for the organization’s mission and deepening our impact throughout Southern California.



**RENATA SIMRIL**  
*President & CEO, LA84 Foundation;*  
*President, Play Equity Fund*

Renata Simril has a longtime commitment to leadership and service. She was appointed the president & CEO of the LA84 Foundation in 2016, a legacy of the 1984 Summer Olympics, and later she founded the play equity movement and became president of the Play Equity Fund. She pursues mentorship opportunities with The Alliance, a collaboration between the Play Equity Fund and all 12 pro sports teams in the region that has created leadership programs and career pathways in the sports industry for local students in communities of color. In 2022, Simril was appointed to Governor Gavin Newsom’s Advisory Council on Physical Fitness and Mental Well-Being. This year, she was appointed to the Board of Commissioners of the City of Los Angeles Department of Recreation & Parks, where she serves as president. Simril was also invited to serve as a Regents’ lecturer in the UCLA Department of Sociology.

**YC YUKEVICH | CAVANAUGH**  
Los Angeles | Irvine | San Diego | San Francisco

**Yukevich | Cavanaugh** is proud to congratulate our Founding Partner, **James J. Yukevich**, for his efforts to eliminate hunger in **Los Angeles**. **Jim** who is an **Emeritus Board Member** of the **Los Angeles Regional Food Bank**, has raised more than \$2,000,000 to help eliminate food insecurity in **Los Angeles**. In the last year alone, he and his circle of friends contributed the equivalent of 1.1 million meals to feed our fellow Angelenos. In 2019, he received the **Los Angeles Regional Food Bank’s** prestigious **“Fighting Hunger Giving Hope Award”**.

See Jim’s story at: <https://www.yukelaw.com/resources/publications/>





LOI: NONPROFIT & PHILANTHROPY



**GREG SINAIKO**  
*President*  
10 West Partners

Greg Sinaiko and his family have been one of the most impactful supporters of the nonprofit Leukemia & Lymphoma Society (LLS). LLS is one of the leading cancer nonprofits in the country, and relies on the passion, generosity and expertise from volunteers and donors such as Sinaiko. His mission connection to LLS' work runs deep and is based on his insistence that better treatments, better patient support and better access to cutting-edge therapies should be made available to all patients and caregivers.

Through personal support, the Sinaikos' philanthropy has surpassed half a million dollars over the last three years—ensuring that necessary funding for new treatments get activated to better understand and improve patient outcomes. Volunteering has also become a family affair as his daughters, wife and parents have all participated in LLS campaigns to expand awareness, raise funds and celebrate in the successes of our peer-to-peer fundraising initiatives.



**MICHAEL SULLIVAN**  
*Vice-President*  
Luskin Orthopaedic Institute for Children

Michael Sullivan has spent the last 30 years in healthcare management, overseeing philanthropy, marketing and business development from remote locations such as Nantucket Island Hospital to Harvard Medical hospitals. He joined LuskinOIC in 2013 and has transformed the Institute's image, raised record amounts of support, and deepened community engagement initiatives.

Under Sullivan's leadership, LuskinOIC has raised funds to build a state-of-the-art surgery center, the largest pediatric fracture clinic in the nation, the most advanced pediatric orthopaedic urgent care center in California, a new Border Clinic in Calexico, and more. LuskinOIC is the largest provider of pediatric orthopaedics on the west coast, Sullivan has spearheaded the Institute's efforts to diversify and most of the staff he has hired fall within minority groups such as the disabled, LGBTQ+, LatinX, seniors, and African Americans. Through extraordinary work, he's earned the affection of patient families, respect of colleagues, and admiration of the faculty.



**FRANCO VEGA**  
*Founder/CEO*  
The RightWay Foundation

Franco Vega founded The RightWay Foundation in 2011 in recognition of the unresolved trauma and barriers negatively impacting job retention for foster youth. Vega began his career in employment services 28 years ago teaching 'Rites of Passage' to transition age foster youth with the Department of Children & Family Services. He also created an employment center on Skid Row at the Midnight Mission, working with recovering addicts and the homeless population.

From providing case management and supervision for 5-12 year-olds to creating a Job Development Component for the Youth Opportunity Movement in Watts and Boyle Heights with the Community Development Department for the City of Los Angeles, Vega has years of experience working with struggling foster youth, helping him recognize that it was time to develop a program that combines mental health services and job readiness training for transition-age foster youth in Los Angeles County.



**MELISSA YEAGER**  
*Executive Director & Co-Founder*  
Claire's Place Foundation

Melissa Yeager's lost daughter Claire Wineland to cystic fibrosis (CF) in 2018 when Claire was only 21, but Claire's legacy will live on forever in the cystic fibrosis community, thanks to her mother. Today, Yeager, co-founder and executive director of Claire's Place Foundation, never stops fighting for the CF community. She co-founded the foundation with her daughter Claire when she was just thirteen and coming out of a coma. Claire's Place Foundation provides heartfelt support to the families of children and to individuals diagnosed with CF. The foundation works to heighten awareness and provide education, skills, and financial and emotional support.

As the executive director and board member, Yeager is responsible for the organization's consistent achievement of upholding its mission and financial objectives. Recently, she founded the "Work Proudly Program," which helps CF patients and caregivers live proudly through fulfilling careers.



**CONGRATULATIONS TO SAUNDRA BRYANT**  
**EXECUTIVE DIRECTOR OF**  
**ALL PEOPLES COMMUNITY CENTER SINCE 1983**

So deserving of being named a nominee for  
Leaders of Influence: Nonprofit and Philanthropy  
We celebrate you!  
Tommy Bourgeois, Seth Walworth, and  
the Board of All Peoples





Partner with the

**Jazz Hands Musicians Academy**

to bring music education to students with IEPs in your local school district.

Most people don't know that 1 in 36 American are the autism spectrum. Most People don't know that over 85% of individual on the autism spectrum are unemployed or underemployed.

**Jazz Hands For Autism** exist to help break stigmas, to empower neurodivergent creatives and to create pathways to inclusion through expression, education, and employment.

**GIVE THE GIFT OF MUSIC TO THE STUDENTS OF THE JAZZ HANDS MUSICIANS ACADEMY**

For more information call (424) 209-7190  
or visit [jazzhandsforautism.org](http://jazzhandsforautism.org)

10880 Wilshire Blvd., Suite 800 | Los Angeles CA



Play Day at Soboroff Field, June 2023



# Modernizing Olympism Through Play Equity

By RENATA SIMRIL

In a world where access to sports and physical activities remains uneven, the LA84 Foundation stands as a shining example of how play equity can modernize the very essence of Olympism. Founded on the principles of fostering fair play, education, and access to sports for all, the foundation has left an indelible mark on the landscape of sports and social development.

Established with a portion of the surplus funds from the 1984 Los Angeles Olympic Games, the LA84 Foundation has been a catalyst for change by investing in youth sports programs and initiatives that reach underserved communities. This unique approach aligns seamlessly with the concept of Olympism – the philosophy that aims to blend sport with culture, education and social progress.

## PLAY EQUITY: A NEW PERSPECTIVE ON OLYMPISM

Olympism has always been about more than just the Games themselves. It's about fostering a sense of community, encouraging personal development, and promoting the values of respect and fair competition. However, these noble principles are often constrained by barriers of access, economics, gender, ability and geography.

The LA84 Foundation recognized the need to expand the definition of Olympism. We have done so by addressing the root causes of these disparities by championing the concept of play equity, which emphasizes the importance of providing opportunities and resources to all individuals to participate in physical activities.

This includes access to facilities, equipment, coaching and programs that promote inclusivity and diversity. Our goal is to create an environment where everyone can experience the benefits of sports and play, to improve physical health, mental well-being, social connections, and personal growth.

Play equity puts a name to a crisis hiding in plain sight. How can all kids have access, when neighborhoods of color have access to 44% less park acreage than predominantly white neighborhoods, when PE in public schools is an unfunded mandate, when many public schools

have defunded enrichment programs including sports, or a vast majority of public schools don't offer recess?

Play equity is a new narrative about why sports and play matter – how these forms of joy can unite us, and how they make society better. Most importantly, play equity is a movement we can all participate in to ensure sports and play are available to all at a moment when it's never been more important, particularly for those among us who have the least.

## EMPOWERING COMMUNITIES THROUGH SPORT

The impact of the LA84 Foundation is visible in the lives and communities our work has touched. Despite training nearly 100,000 coaches, supporting 2,500 sport-based youth development organizations and impacting the lives of nearly four million young people, there is more work to be done to level the playing field. The play equity gap is growing. This gap is caused by systemic issues, poor policy decisions and a lack of funding that leaves millions of young people on the sidelines or out of the game entirely.

One of the foundation's most notable initiatives, the Play Equity Fund, was created as a vehicle to explore systemic issues that cause inequities. The Play Equity Fund creates opportunities for deeper engagement and long-term investments in sport and play.

The Play Equity Fund, a 501(c)3 public charity, is built on the theory that change plus charity is required to create real progress. We are guided by Martin Luther King Jr., who reminds us, "Philanthropy is to be commended but it ought not cause the philanthropist to overlook the [economic] inequities that caused philanthropy to be necessary in the first place."

Through our initiatives, research, partnership, capacity building, and with a keen focus on advocacy, we've dismantled the notion that participation in sports is a privilege reserved for a select few. By doing so, we're renewing the ideals of Olympism as a force for positive societal change.

In four short years, play equity has grown into a powerful movement. We've formed a partnership with Nike, 'Made to Play LA,' focused on the Boyle Heights and Watts neigh-

borhoods to address the gender gap. We have awarded \$770,000 in grants to 13 organizations, reached 1,000 girls, and developed a community of practice that facilitates peer learning and collaboration centered on increasing access.

In partnership with LA County Parks & Recreation, Playworks, the NFL Foundation and the Los Angeles Sports and Entertainment Commission, we launched the "Park On The Move" program to bring sport and play to three of the most park-poor communities in LA County. This year, over 1,000 children have participated, and over 1,200 pieces of sports equipment have been given to kids to take home. Activations held at schools, churches and libraries have increased community cohesion and well-being.

We created a historic partnership with 12 professional sports teams in Southern California after the murder of George Floyd to address inequities in communities of color. The Alliance: Los Angeles helps high school students build pathways to careers in the sports industry, as well as teaches leadership and advocacy skills as these young people address inequities in their communities.

With our Youth Development and Diversion Through Sports and Play proposal, we unlocked a \$15 million public investment over three years to support sport-based youth development organizations throughout LA County via the Care First Community Investment Fund, pending a final Board of Supervisors vote.

## A VISION FOR THE FUTURE

Peter Ueberroth once said of the Games, "We had a good fix on the complexities involved and the magnitude of the task that lay ahead: to cut through all boundaries – geographical, political, religious and cultural – and to create bridges that would join all the participants of the Games."

The LA84 Foundation's commitment to modernizing Olympism through play equity doubles down on this notion and it sets a precedent for the future of sports and social development. Our model for play equity proves what we can achieve when we work together. It's a reminder that the true spirit of Olympism is realized when everyone is given the opportunity to participate, to learn, and to grow.

As we move forward, let us draw inspiration from the LA84 Foundation's remarkable journey. Let's recognize that by prioritizing play equity, we uphold the essence of Olympism – this unending pursuit of excellence, camaraderie, and a better world through sports.

Let our legacy serve as a beacon, guiding all towards a future where sports and play truly belong to everyone, regardless of who they are or where they come from. A future with play equity.

*Renata Simril is President & CEO of the LA84 Foundation, and President of the Play Equity Fund. Learn more at [la84.org](https://la84.org).*



Olympic Day, June 2016



LOI: NONPROFIT & PHILANTHROPY

# Leading a United, Unstoppable Force for the Future

Imagine a world where every child's potential is unleashed, where dreams are nurtured, and possibilities are limitless. Think Together is dedicated to creating just that world. Its afterschool and expanded learning programs are designed to empower students with the knowledge, skills, and confidence they need to succeed in school and beyond.

Think Together believes in the power of education to shape young minds and pave the way for a brighter future.

Caring staff and trusted leaders are what set Think Together apart, allowing Think Together's afterschool and expanded learning programs to go beyond the ordinary, sparking curiosity and igniting a passion for learning.

Lesley Martin, general manager of Think Together's Southeast Los Angeles Region, steps up day after day to create meaningful education experiences for students by working together with our esteemed school partners to align with the school day and foster a love of learning.

The entire Think Together organization is proud to applaud Martin for being named a nominee for the Los Angeles Business Journal's Leaders of Influence: Nonprofit and Philanthropy list. Her steadfast leadership in creating a unique culture centered around trust, collaboration and service above self is evident throughout the programs she leads.

For over 14 years, Martin has dedicated her career to changing the odds for kids. Her work with Lynwood Unified School District, Compton Unified School District and Paramount Unified School District has had a profound impact on the lives of countless students, leading a team that works in and

For over 14 years, Martin has dedicated her career to changing the odds for kids. Her work with Lynwood Unified School District, Compton Unified School District and Paramount Unified School District has had a profound impact on the lives of countless students.

around the traditional school day to ensure students receive the academic and enrichment support they need to succeed.

**SCHOOLS. STUDENTS. COMMUNITIES. FAMILIES. VOLUNTEERS. THINK TOGETHER.**

Think Together unites educational communities with our expertise and resources to offer programs and services for all kids, so that they get the education, guidance, and opportunities they deserve to unleash their full potential.

For more than 25 years, Think Together has partnered with educators. What started as a single afterschool program provider in Costa Mesa has since grown to be one of the state's most impactful education nonprofit providers of afterschool, expanded learning, and school improvement services.

From Compton to Palm Springs, the Bay

Area to Orange County, Think Together delivers programs to more than 200,000 students statewide.

In Los Angeles alone, that impact equates to nearly 30,000 youth. From STEAM (Science, Technology, Engineering, Arts, and Mathematics) activities to hands-on projects that spark student agency and collaboration, Think Together provides a safe and nurturing environment where students can explore, experiment, and flourish.

**INVEST IN TOMORROW, TODAY**

Anyone can help Think Together serve more students, train staff to deliver high quality programs, and purchase curriculum and materials needed to provide robust academic and enrichment content.

Your support has the power to shape the future. By contributing to Think Together, you're investing in a generation of educators



Martin

like Lesley Martin and her team of dedicated regional leaders and program leaders who drive positive change in our communities.

Your generosity ensures that every child, regardless of their background, has access to high-quality education and a chance to shine.

Think Together asserts that "when we unite, we become an unstoppable force for the future."

Learn more at [thinktogether.org](https://thinktogether.org).

# Profile of the Archdiocese of Los Angeles

The Archdiocese of Los Angeles is a family of families. It is also a city of saints. LA Catholics today, in fact, are over four million strong.

The Archdiocese dates from the Spanish missionaries who arrived in the late 1600s and the 1700s to explore the region and under the leadership of Fray Junipero Serra, then established the early missions.

With the pastoral leadership of Archbishop José H. Gomez, the Archdiocese of Los Angeles collaborates to live and proclaim the gospel. Throughout its five Pastoral Regions (Our Lady of the Angels Region; Santa Barbara Region; San Fernando Region; San Gabriel Region; and San Pedro Region), the Archdiocese of LA cares for millions of children, elderly, families, men and women, immigrants, homeless and other vulnerable populations at nearly 600 locations across Los Angeles, Ventura, and Santa Barbara Counties, covering over 8,762 square miles.

Our Archdiocese has 288 parishes, 30 missions and chapels and 16 Eastern Rite Catholic Churches. It has 214 elementary schools and 51 high schools, serving over 73,750 students and their families. It is, in total, made up of 4,349,267 Catholics, residing in 120 cities. Every weekend, Mass is celebrated in over 42 languages.

For more information, please visit [lacatholics.org](https://lacatholics.org).



Cathedral of Our Lady of the Angels

RICH VILLACORTA



# A Nonprofit Dedicated to Preserving Human Eyesight for All

Southern California’s Doheny Eye Institute has been at the forefront of vision research for over 75 years, driven by a mission to conserve, preserve, and restore human eyesight. Today, the world-class researchers and clinician-scientists at Doheny are actively investigating diabetic retinopathy, uveitis, age-related macular degeneration, and the use of artificial intelligence in helping to diagnose ocular disease. The groundbreaking research to develop treatments and cures continues to gain attention on national and international levels.

In the last few years, Doheny scientists have developed novel eye imaging equipment and computer-based retinal image analysis, identified retinal biomarkers for Alzheimer’s Disease, and developed multiple animal models of ocular disease – with pioneering research continuing every day.

As a nonprofit, the team at Doheny depends upon grants and donors to continue forging ahead in its world-class research. Through the generous contributions of supporters, Doheny scientists and physicians are able to continue leading their field in the advancement of vision research, education, and patient care.

Supporting the future of vision for everyone can be made with a gift by visiting [doheny.org/donate](https://doheny.org/donate). Doheny also offers information and resources around planned giving at [doheny.giftlegacy.com](https://doheny.giftlegacy.com) where your legacy can continue through your estate plans. It only takes a few minutes to give the gift of sight.

Furthermore, people across Los Angeles County can experience first-hand the top-notch innovative approach to care at the Doheny Eye Center UCLA in Pasadena and Arcadia. The facility’s experts offer a range of clinical specialties, including cataract surgery, corneal transplantation, glaucoma, neuro-ophthalmology, oculoplastics, optic nerve and optic neuropathies, pediatric ophthalmology including pediatric cataract and lens disorders, pupillary disorders, retinal and macular diseases, thyroid eye disease, uveitis, vitreoretinal surgery, and more.

In affiliation with UCLA’s Stein Eye Institute, Doheny is ranked #5 for Best Ophthalmology Hospitals by U.S. News and World Report. Additionally, Doheny is ranked in the Top Ten by Ophthalmology Times.

The Doheny Eye Institute headquarters is located at 150 N. Orange Grove Blvd. in Pasadena. Also, its experienced staff is available to help you achieve your philanthropic goals.

For further information or questions, please contact Molly Ann Woods, Chief Development Officer, at [mwoods@doheny.org](mailto:mwoods@doheny.org).

*To learn more about the groundbreaking research at Doheny Eye Institute, visit [doheny.org](https://doheny.org).*



LOS ANGELES BUSINESS JOURNAL

THE LISTS 2024

Leverage your brand with the Los Angeles Business Journal’s most prestigious special edition

The annual special edition of **The Lists** is an invaluable business tool for many CEOs, business owners and decision-makers across the country and in Los Angeles. It catalogs and ranks the top companies in the greater L.A. area according to different criteria, such as revenue, percentage growth, assets under management and number of employees.

**The Lists 2024** includes a compilation of the lists published weekly in the Los Angeles Business Journal throughout 2023.

**MAXIMIZE YOUR EXPOSURE**  
CEOs, business owners and other key decision-makers with tremendous purchasing power refer to **The Lists** 13.9 times per year.

**TAKE ADVANTAGE OF HIGHLY TARGETED PLACEMENT**  
Position your name, image and message prominently with a sponsorship or advertisement adjacent to your desired industry or list.

**ENHANCE YOUR BRAND**  
Position your company among industry leaders and L.A.’s top-ranked businesses.

Publication Date:	Space Reservation:	Materials Due:
<b>December 25, 2023</b>	<b>November 3, 2023</b>	<b>November 13, 2023</b>

For more information and pricing, please email [advertising@labusinessjournal.com](mailto:advertising@labusinessjournal.com)

ANNIVERSARY  
LOS ANGELES  
EDUCATION  
PARTNERSHIP

Celebrating 40 years of transforming education for the community, with the community, from diapers to diplomas

**LAEP.ORG**