

# WOMEN OF INFLUENCE: HEALTH CARE



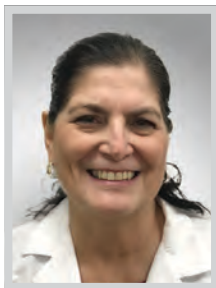
**T**HERE ARE SOME PARTICULARLY STELLAR HEALTH INDUSTRY STEWARDS IN THE LA REGION WHO HAPPEN TO BE women and we've alphabetically listed some of the best of them here, along with key details and information about their careers, recent successes and stand-out moments they've achieved.

The health care leaders listed in these pages were chosen by the Los Angeles Business Journal to be recognized for exceptional stewardship and achievement across the full spectrum of responsibility, exemplary leadership, the highest professional and ethical standards, and for contributions to the health and wellbeing of Los Angeles.

*Methodology: The professionals featured in these pages did not pay to be included. Their profiles were drawn from nomination materials submitted to the Los Angeles Business Journal. Those selected for inclusion were reviewed by the editorial department. The professionals were chosen based on a demonstration of impact made on the profession and on the Los Angeles community.*



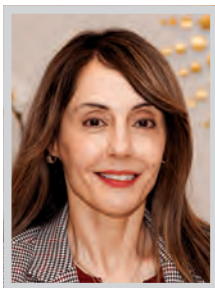
## WOMEN OF INFLUENCE: HEALTH CARE

**JEANETTE ABUNDIS**

Senior Director, Emergency and Critical Care Services  
PIH Health

Jeanette Abundis MSN RN CNS is the senior director of Emergency and Critical Care Services at PIH Health Whittier Hospital and PIH Health Downey Hospital. In her current role, Abundis is responsible for the successful operations at PIH Health Whittier Hospital including its 65-bed emergency department including paramedic base station, ST-elevation myocardial infarction and Comprehensive Stroke receiving center(s), a 48-bed Critical Care Unit (CCU)/Intensive Care Unit (ICU), as well as the Vascular Access team. She also oversees the operations at PIH Health Downey Hospital including its 33-bed ED, basic stroke receiving center and a 22-bed CCU/ICU.

An innovative nurse leader with a strong clinical and administrative background in emergency, trauma services, critical care, emergency preparedness, behavioral health, medical-surgical and service line development, Abundis possesses an expertise in staff development, regulatory compliance and program design and implementation.

**KERRY AYAZI**

Chief Administrative, Compliance and Legal Officer  
HRC Fertility

Kerry Ayazi has worked in healthcare management and leadership for almost two decades. She has held various executive positions where she has shown herself to be an exceptional example of women's leadership. Ayazi is a fierce advocate for reproductive health access parity. She worked for 13 years as the senior vice president and general counsel of a renowned nonprofit reproductive healthcare provider. She has also worked in cancer care before returning to reproductive health with HRC Fertility. She is passionate about equity in healthcare access and advancing reproductive medicine.

Ayazi's leadership path took a parallel but distinct track as she continued to grow through the corporate path, increasingly taking on more corporate, administrative and governance responsibilities. This corporate journey has continued over the last 18 years or so, which led her to the position she has now, chief administrative, compliance & legal officer for HRC Fertility.

**YASMEEN BARAKAT**

Medical Planner  
Perkins&Will

Yasmeen Barakat, AIA, LEED AP BD+C, NCARB, is a licensed architect in California and a medical planner with Perkins&Will's Los Angeles studio. Joining Perkins&Will in 2022 as a medical planner, she's already making a mark, having demonstrated her ability to handle a range of projects with various clients simultaneously as well as roles, whether as a medical planner, interior designer, or project architect with technical knowledge. She's collaborated with both national and international clients on schematic design, design development and construction administration of healthcare facilities. Barakat understands how to work with and implement a client's facility standards, while bringing new and creative solutions to a project.

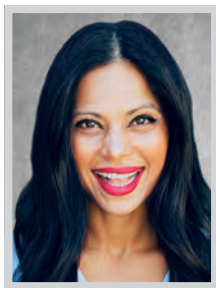
Since moving to the US six years ago, Barakat has dedicated her career to healthcare planning and design. Her exceptional contributions to the field of healthcare design and her commitment to creating patient-centered, healing environments.

**ELAINE BATCHLOR**

Chief Executive Officer  
MLK Community Healthcare

Elaine Batchlor, MD, MPH is the chief executive officer of Martin Luther King, Jr. Community Hospital, which opened in 2015. Dr. Batchlor was the driving force behind the effort to open the new, state-of-the-art, community-oriented, safety-net hospital providing compassionate, quality care and improving the health of the South Los Angeles community.

Throughout her career, Dr. Batchlor's priority has been to improve access and quality of care for underserved communities utilizing innovative and collaborative approaches. Her work to increase access for underserved populations has been recognized as an example of leading best practices and adopted throughout California. Before assuming the helm of Martin Luther King, Jr. Community Hospital, Dr. Batchlor served on the executive leadership team of L.A. Care Health Plan, the nation's largest public health plan. She was instrumental in developing a care delivery model that expanded access and resources to more than a million individuals throughout the county.

**KAVITHA BHATIA**

President and Chair, Prime Healthcare Foundation;  
Chief Medical Officer of Strategy,  
Prime Healthcare

As the chief medical officer of strategy for Prime Healthcare, Kavitha Bhatia, MD, MMM, FAAP, FACHE prioritizes systemwide value creation and implements strategic initiatives ensuring health equity and Prime's continued operational and clinical success.

Dr. Bhatia champions healthcare excellence with the vision and ability to design strategies for health equity, growth, long-term success, operational and clinical excellence. Dr. Bhatia leads teams toward transformative change in nearly every area of the organization. During a time when Prime tripled in size, Dr. Bhatia led initiatives and strategic planning to support the growth of Prime, implementing processes and recruiting leadership. Her strategic vision has led Prime in the expansion of its network of care through urgent care, rural health and ambulatory surgery centers, enabling Prime to reach more patients and providing patients care when and how they choose.

**ALEXANDRA CARTER**

Senior Vice President; Chief Development Officer  
Children's Hospital Los Angeles

Alexandra (Alex) Carter, MBA, CFRE, serves as senior vice president and chief development officer at Children's Hospital Los Angeles (CHLA). She provides strategic leadership in fundraising to support CHLA's mission to create hope and build healthier futures for children. Additionally, she is responsible for developing and launching the institution's fundraising campaigns and events and is liaison to its Board of Trustees.

Carter has served as a fundraising leader and counsel to a variety of nonprofit organizations. For over two decades, she has devoted her career to leading philanthropic efforts for prominent healthcare entities. Since 2017 when her tenure began at CHLA, fundraising records have been exceeded repeatedly. Under Carter's leadership, CHLA has garnered substantial gifts to support hospital priorities, the Jackie and Gene Autry Orthopedic Center and the newly-launched Chuck Lorre Research Scholars Program—which supports research education for high school and college students from under-resourced communities throughout LA.

**TIFFANY CAVALLARO**

Executive Director, Supply Chain  
Amgen

Tiffany Cavallaro is executive director of external planning and delivery (EPD) within the Global Supply Chain Organization at Amgen. In her current role, Cavallaro leads global raw material planning for Amgen and product planning for Amgen's external manufacturing network across the globe. In both roles, she constantly navigates the team(s) thru complex supply constraints to ensure Amgen's goal of supplying "Every Patient Every Time."

Cavallaro's recent accomplishments include optimization of raw material procurement strategies, successful integration of external supply chains associated with multiple large-scale integrations, and significant efforts to advance automation and supplier collaboration in the digital space. Cavallaro has successfully led multiple organizations within Supply Chain, from raw materials to finished goods, and across site, regional and global settings. Prior to joining EPD, Cavallaro held roles of increasing responsibility including an assignment in the Netherlands leading the European Union Regional Planning and Supply Management team.

**GINA CHANG**

Principal  
CO Architects

Gina Chang, AIA, EDAC, has been at the forefront of healthcare design for more than 20 years. A principal and design team leader at Los Angeles-based CO Architects, Chang has helped healthcare providers implement innovations that improve patient outcomes and enhance staff wellness. An in-demand industry speaker and writer, Chang is an authority on biophilic design and its impact on healing. Beyond creating patient rooms that maximize natural light and serene outdoor views of curated landscapes (with purposely designed nature walks, where possible), Chang considers neuro-responses such as the soothing, mesmerizing power of wind-blown kinetic objects on building facades and neutralizing environmental impact with the nation's first all-electric hospital.

Other innovations Gina has helped pioneer include Universal Patient Rooms and Units, where providers and equipment come to the patient to maximize comfort, flexibility and ease of care, as well as minimize patient movement and hospital-acquired infections.

# PIH Health Congratulates **Jeanette Abundis MSN RN CNS**

Recognized as one of *Los Angeles Business Journal's*  
**2024 WOMEN OF INFLUENCE: HEALTHCARE**

PIH Health honors women in healthcare leadership and appreciates their exceptional contributions. PIH Health is a nonprofit, regional healthcare network that serves Los Angeles County, Orange County and the San Gabriel Valley. Our fully integrated network includes 3 hospitals, 31 outpatient facilities, 7 urgent care centers, home healthcare services and more—all focused on providing you with world-class, award-winning care.



**Jeanette Abundis MSN RN CNS**  
Senior Director  
Emergency and Critical Care Services  
PIH Health Whittier Hospital



[PIHHealth.org](http://PIHHealth.org)



**PIH Health Whittier Hospital**

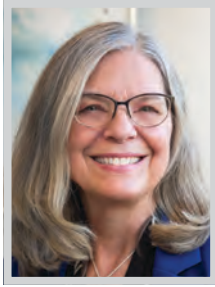
## WOMEN OF INFLUENCE: HEALTH CARE

**ZOILA D. ESCOBAR**

*Executive Vice President &  
Chief Administrative Officer, AltaMed;  
President, AltaMed Foundation*

**H**ealth Services, the nation's largest independent federally qualified health center. Zoila Escobar oversees several critical administrative areas shaping nearly every dimension of the AltaMed experience to ensure that everyone AltaMed serves receives patient-centered care.

Dedicated to leveling disparities in health care for underserved Latino communities, Escobar has spent more than three decades in community health leadership, spearheading everything from grassroots initiatives to major policy changes at a national level to improve access to healthcare services. Escobar helps design innovative culturally competent programming to meet the complex health needs of the communities AltaMed serves. Escobar raises \$40-46 million annually for AltaMed to fulfill its mission to provide quality health care, regardless of the ability to pay. Escobar also steers an employee-giving effort that engages AltaMed's 3,000 employees to support patients with emergent non-medical needs.

**DEBORAH FERRINGTON**

*Chief Scientific Officer  
Doheny Eye Institute*

**D**eborah Ferrington, PhD, is Doheny Eye Institute's chief scientific officer (CSO) and holds the Stephen J. Ryan - Arnold and Mabel Beckman Foundation Endowed Presidential Chair. Dr. Ferrington's illustrious career includes more than 20 years of experience in academic research, and she is internationally recognized for her ground-breaking research on age-related macular degeneration (AMD), the leading cause of blindness among the elderly.

With an aging global population, it is estimated that approximately 290 million individuals will suffer from AMD by the year 2040, imposing heavy burdens on health care systems worldwide. With limited and largely ineffective treatment options available to most AMD patients, there is an urgent need for new therapeutic strategies, which has been the focus of Dr. Ferrington's research. Her laboratory's investigations in human donor eyes led to the novel finding that defects in the mitochondria are an early pathological event in AMD.

**PENELOPE GALLEGOS**

*Director of Business Development  
Executive Mental Health*

**S**upporting older American's mental health and identifying best ways to work in the challenging skilled nursing facility setting have given purpose to the life work of licensed vocational nurse, Penelope Gallegos, director of business development at Executive Mental Health. Over the past 10 years with the company, Gallegos has worked to develop an \$8 million-dollar mental healthcare operation, which has served thousands of patients a year as a key clinical partner to over 250 skilled nursing facilities throughout California and Nevada.

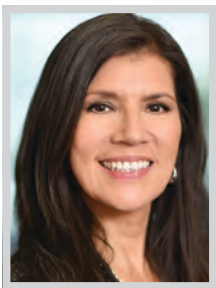
Gallegos has a deep understanding of the unique needs of the skilled nursing setting having worked prior to joining EMH as a quality assurance nurse and case manager, gathering acute, telemetry, ER, medical and surgery experience. Over the past seven years, and while challenged with the uncertainties of the pandemic, Gallegos grew the clinical psychology partner agreements by 600%.

**DEANNA GARCIA**

*CFO  
Jones & Sons Enterprises Inc.*

**D**eanna Garcia's strategic financial planning and management led to a remarkable 33% growth in 2023, solidifying Jones & Sons Enterprises' financial position and ensuring sustainable success. Garcia orchestrated the successful securing of financing through Capital One, demonstrating her adept negotiation skills and financial acumen in navigating complex financial arrangements. She has played a pivotal role in forging strategic partnerships with key organizations and individuals, expanding the company's reach and influence in the business landscape.

Under Garcia's guidance, Jones and Sons Enterprises expanded its portfolio beyond healthcare into the lucrative realms of sports memorabilia and commercial real estate, diversifying revenue streams and maximizing growth opportunities. Garcia also implemented streamlined financial processes and cost-saving measures, enhancing operational efficiency and maximizing profitability across all business sectors. Garcia ensured regulatory compliance and fiscal responsibility across all aspects of the company's operations.

**MARISSA GOLDBERG**

*CEO  
Doheny Eye Institute*

**A**s CEO of Doheny Eye Institute, Marissa Goldberg has made an indelible mark in vision care throughout the Los Angeles area, and in affiliation with UCLA's Stein Eye Institute, helps lead Doheny to uphold its mission to further the conservation, improvement and restoration of human eyesight.

During her 30 year career at Doheny, Goldberg has held a variety of roles including human resources director, quality improvement coach, CAO, vice president, COO and executive director before being named CEO. Through her business guidance, she and the Doheny Board of Directors worked tirelessly to forge a new, powerful alliance and ensure a smooth union between Doheny and UCLA. Doheny's affiliation with UCLA Stein Eye Institute combines the strength, reputation and distinction of two of the nation's top eye institutions. Today, Doheny Eye Institute continues to attract top vision scientists in large part due to Goldberg's leadership.

**IKRAM GUERD**

*Managing Director US; VP of Global Marketing  
Aspivix Corporation*

**A**s the VP of global marketing and managing director US at the FemTech ASPIVIX, Ikram Guerd spearheads a mission to modernize gynecology with "gentle" in mind through innovation. Her leadership extends beyond boardrooms, as she actively engages with communities, championing causes that uplift women and young girls. Through her involvement with non-profit organizations like Inspiring Girls USA and Women in Healthcare, she aims to inspire and empower women and young individuals.

Currently, she leads the Aspivix Corporation she built in 2023 with a strong business and marketing strategy to raise awareness around innovative solutions to finally reduce pain for women in gynecology. Her activities and commitment have made her a game changer in women's health as she's dedicated to shaping this field that been historically undervalued and underestimated in terms of research, innovation and funding.

**ILEANA HERNANDEZ**

*Health Care Litigation Leader  
Manatt, Phelps & Phillips, LLP*

**I**leana Hernandez has a stellar reputation as a true trial lawyer, known for guiding some of the most recognizable names in health care through every stage of litigation in state and federal courts, mediations, arbitrations and administrative hearings. As leader of Manatt's Health Care Litigation practice, Hernandez is the go-to counsel for health insurance and managed care organizations facing the gamut of complex litigation issues through her experience successfully guiding clients through the trial and appeals process.

Hernandez successfully defended a major health care insurance company in a lawsuit brought by a group of treatment providers that alleged that the company owed them millions in unpaid or underpaid claims associated with hundreds of insureds. The case raised important legal and public policy questions, including the extent to which health care providers can offer items of value to third parties and patients to get the patients in the door.

**CHI HUYNH**

*Partner  
Sheppard, Mullin, Richter & Hampton LLP*

**C**hi Huynh, a partner in Sheppard Mullin's Healthcare industry team, is a seasoned legal advisor to Fortune 500, middle market and start-up companies, specializing in healthcare transactions and compliance matters, mergers and acquisitions, and corporate governance matters. She's been recognized as a dealmaker rising star for leading healthcare companies through complex deals, including one which earned the title "Private Equity Deal of the Year" from both Global M&A Network and The M&A Advisor. In addition to her transactional expertise, she helps client identify and address complex healthcare-related regulatory issues, including information privacy, corporate practice of medicine, anti-kickback and federal Stark issues.

In addition to her practice, Chi serves as corporate lead of Sheppard Mullin's Women in Healthcare Leadership Collaborative, an exclusive national leadership initiative committed to supporting women who are currently in or are advancing into leadership positions within the healthcare and life sciences industries.

Keck Medicine of USC is proud to honor its leaders recognized by the Los Angeles Business Journal as Women of Influence: Health Care. These outstanding individuals work together to advance one goal — providing world-class care sparked by our patients' potential.



**Tarina Lee Kang, MD**  
Chief Medical Officer  
USC Verdugo Hills Hospital



**Smitha Ravipudi, MPH**  
CEO  
USC Care Medical Group



**Joi Torrence-Hill, MHA, FACHE**  
Chief of Operations  
USC Norris Cancer Hospital

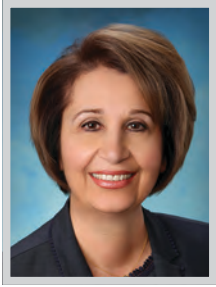


**Veronica Vasquez-Montez, MD**  
Medical Director, Emergency  
USC Arcadia Hospital

## TOGETHER WE ARE LIMITLESS



## WOMEN OF INFLUENCE: HEALTH CARE

**ALICE ISSAI**

President  
Adventist Health Glendale

**A**lice Issai is the first woman president of Adventist Health Glendale, the non-profit, 515-bed flagship hospital of the 26-facility Adventist Health System. In her first CEO role, she joined Adventist Health Glendale in July 2018 with a vision to grow the medical center into a true tertiary center, creating a hub for “destination medicine” with world-class services in oncology, cardiovascular medicine, neurosciences, orthopedics and more. Year after year, she continues to do just that; evolving and enhancing the clinical excellence and quality medical care for the community.

Under Issai's leadership in 2023, Adventist Health Glendale had 17,895 discharges, 1,466 births, 7,045 surgeries, 55,020 emergency visits and 107,956 outpatient visits. Issai has elevated the caliber of care to patients in Glendale and surrounding communities by creating or growing high-quality, comprehensive service line offerings and attracting physicians to the community who are leaders in their specialties.

**TARINA KANG**

Chief Medical Officer  
USC Verdugo Hills Hospital

**T**arina Kang, MD, MHA serves as chief medical officer of USC Verdugo Hills Hospital (USC-VHH), part of Keck Medicine of USC. In this role, she oversees patient care coordination, technology implementation, process improvement and regulatory compliance. She works closely with the USC-VHH executive leadership team to ensure the highest quality of service for patients and their caregivers.

Kang also serves as clinical associate professor of emergency medicine at the Keck School of Medicine of USC. She has fostered alliances to expand key service lines for the hospital. By strategically cultivating relationships with both community and academic physicians, Kang was able to grow and enhance the hospital's offerings, demonstrating dedication to the hospital's vision for advancing healthcare services. She has also implemented more transparent monitoring systems for physician services, fostering a culture of collaboration and continuous improvement.

**LARA KHOURI**

Executive Vice President; Chief Operating Officer  
Children's Hospital Los Angeles

**S**ince joining the leadership team of Children's Hospital Los Angeles (CHLA) in 2015, the organization has benefited immeasurably from Lara Khouri's dynamic leadership, visionary communication style and unwavering approach to holistic problem-solving. She is known for bringing groups of experts together to address problems and opportunities and combines her compassion and commitment to support and advance the fulfillment of CHLA's mission—to create hope and build healthier futures.

Khouri is responsible for overseeing operational performance across the CHLA enterprise. Khouri works alongside clinical and administrative leaders to develop and improve processes, procedures and systems while addressing patient care needs, patient and team member experience and CHLA's impact in the broader community. Overseeing clinical growth efforts across the organization, she has led the development of dozens of pediatric programs that bring together world-class, multidisciplinary experts to care for the most complex of patients.

**IRENE KIM**

Director, Comprehensive Transplant Center;  
Surgical Director, Kidney Transplant Program;  
Professor of Surgery; Director, Division of Transplant;  
Esther and Mark Schulman Chair,  
Surgery and Transplantation Medicine  
Cedars-Sinai

**I**rene Kim, MD, is director of the Comprehensive Transplant Center at Cedars-Sinai, one of the largest transplant programs in the US. Dr. Kim—who holds the Esther and Mark Schulman chair in Surgery and Transplantation Medicine—also is surgical director of Cedars-Sinai's Kidney Transplant Program, professor of Surgery and director of the Division of Transplant. She joined Cedars-Sinai after earning a bachelor's degree in biology from the Massachusetts Institute of Technology and her medical degree from the University of California, San Francisco, followed by a residency in general surgery at Tufts Medical Center and a fellowship in abdominal transplantation at Stanford University.

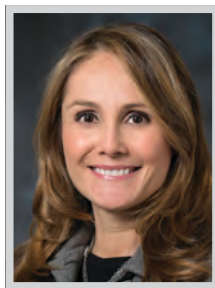
Over the past 12 years at Cedars-Sinai, Dr. Kim has cemented the Comprehensive Transplant Center's reputation for accepting the most complex, high-risk patients.

**NICOLE ANDERSON LEONARD**

Vice President; Vice Dean of Academic Affairs  
Cedars-Sinai

**N**icole Anderson Leonard, JD, MBA, had always dreamed of helping people as a doctor, but that dream took a transformative pivot and today, Leonard is helping reshape healthcare and healthcare delivery through her work as an executive leader in academic medicine. As vice president and vice dean of Academic Affairs at Cedars-Sinai, Leonard oversees a \$500 million portfolio and multiple teams, including the Office of Research Administration, the Department of Comparative Medicine, Research Facilities and the Office of Research Compliance & Quality Improvement.

Leonard's broad professional background—spanning the entire research spectrum—coupled with the dynamic environment that is Cedars-Sinai, gives her a 30,000-foot view of healthcare that allows her to inform strategy and direction, as well as execute on it, so that the team's work has the greatest impact with the least amount of disruption.

**LISA MAQUEIRA**

Vice President of Finance; Chief Revenue Cycle Officer  
Cedars-Sinai

**L**isa Maqueira is vice president of finance and chief revenue cycle officer at Cedars-Sinai, overseeing revenue cycle functions for Cedars-Sinai Medical Center; Cedars-Sinai Marina del Rey Hospital; Cedars-Sinai Medical Network; Huntington Health, a Cedars-Sinai Affiliate; and Huntington Health Physicians medical group.

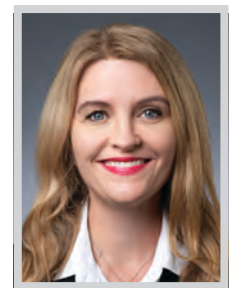
Maqueira creates and implements a strategic vision centered around the patient experience while maximizing revenue through organizational policy, innovation and implementing workflows designed to support a single, patient-centered revenue cycle. Maqueira joined Cedars-Sinai in 2011 as executive director of Professional Billing and Revenue Cycle Services for the Cedars-Sinai Medical Network, faculty and emergency physicians. She was promoted to vice president of Revenue Cycle and Managed Care Operations for the Medical Network in 2016, and her leadership and innovation are significant factors in its success. Among her career achievements is successfully integrating four separate hospital and professional billing teams into one integrated revenue cycle team.

**STEPHANIE MEDINA**

Chief People Officer  
24 Hour Home Care

**S**tephanie Medina's humble beginnings from being the sixth entry-level employee at 24 Hour Home Care in 2010 to assuming the role of chief people officer — epitomize her leadership abilities, influence and unwavering dedication to the organization's mission to 'impact people's lives by making a difference every day.' With over 14 years of tenure, she brings a wealth of experience and a deep understanding of every facet of the business.

In Medina's previous role as President of Disability Services, Stephanie launched the department's exponential growth across the five years she led the division. She grew the department revenue from \$20 million in 2017 to \$96 million in January 2022 — a 380% growth. Under her leadership during the pandemic, the division ensured that more than 8,000 families with developmentally disabled adults and children had continuity of care.

**LYNSEY MITCHEL**

Partner  
Sheppard, Mullin, Richter & Hampton LLP

**L**ynsey Mitchel is a partner in Sheppard Mullin's Healthcare industry team and a leader of the Health Plan practice. Clients turn to her specifically for her expertise in managed care, including HMO regulatory matters. She has represented a substantial number of currently licensed restricted Knox-Keene HMO license holders in California in their licensure processes. She has worked on HMO licensure and other matters for Medicare Advantage, commercial and Medicaid health plans, including dental and vision plans.

In the managed care sector, Mitchel represents payors and providers participating in accountable care organizations (ACOs), direct-to-employer arrangements and other risk-sharing arrangements. Mitchel works with national and regional health plans as well as large health systems and physician groups on population health management strategies, provider employment, risk-based, performance-based and value-based payor and provider contracting, compliance, acquisitions and physician alignment strategies.

WOMEN OF INFLUENCE: HEALTH CARE

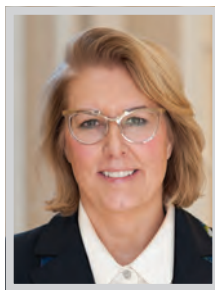


**VERONICA VASQUEZ MONTEZ**

*Medical Director*  
USC Arcadia Hospital

Veronica Vasquez Montez, MD is a pillar of the Los Angeles community. She grew up in Los Angeles and, after graduating from Weill Cornell Medical College of Cornell University, she completed her residency at Los Angeles General (formerly LAC+USC). She held multiple leadership positions at LAC+USC, PIH Health and Good Samaritan Hospital and joined the faculty at the Keck School of Medicine of USC.

Most recently, Dr. Montez was named medical director of the emergency department at USC Arcadia Hospital, formerly Methodist Hospital of Southern California. She redesigned the flow of the department by walking through the patient journey and assessing any points where a patient might have additional needs. For example, a nurse is now stationed in the lobby to immediately meet patients and assist those who need assistance from their vehicle, as well as triage especially critical emergency patients.

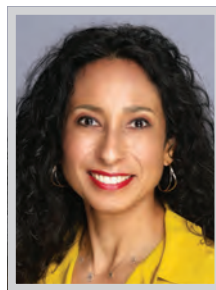


**LORI J. MORGAN**

*President and CEO*  
Huntington Health, an Affiliate of Cedars-Sinai

Huntington Hospital is home to the largest emergency department and only level-II trauma center, as well as the only level IIIB NICU, in the San Gabriel Valley in Southern California. Lori Morgan MD, MBA's leadership around the recent affiliation with Cedars-Sinai further strengthens Huntington's ability to provide the community with accessible, coordinated, high-quality care, close to home. The affiliation enables many different types of collaborations between Cedars-Sinai and Huntington Health on clinical services, research, clinical trials and education.

Dr. Morgan has also had a major focus on setting physician strategy and expanding clinical programs and led a major construction project for new operating rooms, cardiac catheterization labs and earthquake retrofitting. She is currently leading initiatives to expand diversity, equity and inclusion, and create and implement leading-practice caregiver wellness resources to address burnout and foster greater professional satisfaction and professional billing teams into one integrated revenue cycle team.



**CLAUDIA MUÑOZ**

*Neurologist and Epileptologist*  
Emanate Health

Emanate Health has elevated and expanded its services and programs to bring top-tier care to patients closer to home, especially to aging populations, which will be increasing in the coming years. Claudia Muñoz, MD, MPH's specialty and skills as a neurologist and epileptologist are integral in helping the organization provide compassionate care to older patients, and also in addressing the health needs of more than one million patients across the San Gabriel Valley.

Dr. Muñoz's patient care philosophy is to help her patients stay healthy and strong, and to live their lives to their fullest potential, which is an extension of our mission to help keep patients stay well in body, mind and spirit in a safe, compassionate environment. She lends her expertise and knowledge to the Emanate Health community by participating in seminars and panels that bring health information directly to them, whether virtually or in person.



**JINHEE NGUYEN**

*Patient Care Executive*  
Adventist Health Glendale

As the patient care executive at Adventist Health Glendale, Jinhee Nguyen emphasizes the triple "Es" – employee engagement, physician engagement and patient engagement. Nguyen provides nursing leadership for approximately 900 registered nurses at the 515-bed hospital – the flagship of Adventist Health's 26-hospital system.

Nguyen strives to cultivate an environment where the healthcare workforce can thrive and perform at their best to deliver outstanding care to every patient, every time. Under her leadership, Adventist Health Glendale has earned the Healthgrades Patient Safety Excellence Award six years in a row (2019-2024). In 2020, Nguyen and her nurse leaders embarked on a journey to achieve Magnet designation from the American Nurses Credentialing Center – an extensive process that typically takes four to six years. This program recognizes excellence in nursing and patient care as well as innovation in professional nursing practice. Under Nguyen's direction, Magnet designation was achieved last year, in just three years.



Congratulations to **Stephanie Medina**

For being selected for Los Angeles Business Journal's 2024 Women of Influence:

★ ★ ★ **HEALTH CARE** ★ ★ ★

Thank you for your hard work and dedication in carrying out 24 Hour Home Care's mission of "impacting people's lives by making a difference every day"

Your unwavering commitment to cultivating a people-first culture fuels our drive to deliver compassionate care to underserved communities throughout Los Angeles.



[www.24hrcares.com](http://www.24hrcares.com)

WOMEN OF INFLUENCE: HEALTH CARE



**MIRNA ORIHUELA**  
Regional Manager  
Kaiser Permanente

Mirna Orihuela is a first-generation Latina college graduate who has emerged as a trailblazer in healthcare leadership. She is the regional DME manager at Kaiser Permanente for Southern California. Her strategic acumen shines through in navigating healthcare intricacies as evidence by her transformative impact in Post-Acute Care, Transitional Care and Detox Services. At a remarkably young age, Orihuela has already become a catalyst for change by creating initiated solutions, developing strategic initiatives and restructuring teams and workflows to positively align with operational goals. Her unique leadership style, grounded in ethics and transformation, positions her as an invaluable asset for profound organizational restructuring.

Orihuela also stands out for her comprehensive understanding of the health care continuum spans acute, post-acute and behavioral health entities. Her commitment to community education is evidenced through her role as a speaker for the Southern California Healthcare Executives, notably addressing critical issues in post-acute care.



**SMITHA RAVIPUDI**  
Chief Executive Officer, USC Care  
Keck Medicine of USC

Smitha Ravipudi, MPH, is chief executive officer of USC Care, Keck Medicine of USC's network of physicians who provide outpatient services and procedures. She is also CEO of Keck Medicine's ambulatory care services. In these roles, she is responsible for health system operations in regional outpatient locations, (which span across Kern, Los Angeles and Orange Counties and Las Vegas), hospital-based clinics, Keck School of Medicine of USC department clinics and outpatient joint-venture partnerships and community practices. Ambulatory care includes approximately 720,000 annual outpatient encounters.

Ravipudi has overseen a number of recent achievements in ambulatory care, including achieving record performance in patient experience, hitting the top decile as measured by the CG-CAHPS survey. She also expanded Keck's regional oncology footprint by opening and successfully licensing the new medical-oncology and treatment center at Henry Mayo; and successfully trained caregivers on the sensitive health exam policy, procedures and expectations.



**SUNITHA REDDY**  
Chief Revenue Officer / VP Operations  
Prime Healthcare

Sunitha Reddy, MBA, MPH, FACHE is the chief revenue officer and vice president of operations for Prime Healthcare, the fifth largest for-profit health system in the United States with 44 hospitals in 14 states, more than 300 outpatient locations and nearly 50,000 employees and affiliated physicians. In her leadership role, Reddy drives innovation throughout Prime Healthcare through the planning and directing of its operational and financial strategy and initiatives. She is responsible for the attainment of short- and long-term financial and operational goals and collaborates with other leaders to guide the development of Prime Healthcare's future growth.

Reddy works closely with local leadership and chief medical officers to strengthen case management departments and streamline hospital clinical workflows. She spearheaded the development of a strategic vendor outsourcing program, the implementation of new technologies and platforms, optimization of revenue cycle IT systems and improved point-of-service collections, yielding a multi-million-dollar bottom line improvement.



**SHERRIL RIEUX**  
Physician  
Sherril Rieux, MD

Dr. Sherril Rieux is not only a highly respected MD but also a compassionate advocate for the well-being of the community as a whole. In addition to her exemplary medical practice, Dr. Rieux generously donates her time and expertise to various community initiatives. As a board member of the Alzheimer's nonprofit organization, *Who's Gonna Take Care of Me?*, she plays an integral role in advancing programming and education about Alzheimer's disease throughout LA County and surrounding areas. Her leadership and commitment have significantly contributed to the success and impact of the organization's efforts in raising awareness and supporting individuals and families.

One of Dr. Rieux's most notable contributions is her leadership in spearheading the "Elves for Alzheimer's" Christmas program. Through this initiative, she and her team of dedicated volunteers have raised and donated over 40,000 adult briefs (diapers), toiletries and essential items to members of the community who are often overlooked and underserved.



**Alice Issai**  
President



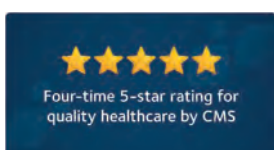
**Jinhee Nguyen**  
Chief Nursing Officer

## Congratulations to our Women of Influence!

Thank you for your leadership and commitment to delivering world-class care to our community.

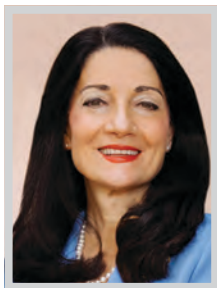
Adventist Health Glendale is a nonprofit, 515-bed, tertiary-care hospital, nationally acclaimed for clinical excellence and patient safety. As the flagship of the Adventist Health system, we have proudly served Southern California for nearly 120 years.

[AdventistHealthGlendale.org](http://AdventistHealthGlendale.org)





WOMEN OF INFLUENCE: HEALTH CARE

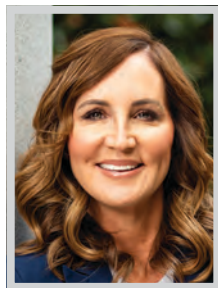


**JOHNESE SPISSO**

*President, UCLA Health;  
CEO, UCLA Hospital System;  
Associate Vice Chancellor, UCLA Health Sciences*

Johnese Spisso assumed the position of President of UCLA Health, CEO of UCLA Hospital System and associate vice chancellor of UCLA Health Sciences in 2016. She is a nationally recognized academic healthcare leader with more than 40 years of experience. As CEO, she leads the UCLA's Health System consisting of the UCLA Ronald Reagan Medical Center, UCLA Mattel Children's Hospital, Resnick Neuropsychiatric Hospital at UCLA, UCLA Santa Monica Medical Center, the expansive network of over 260 UCLA Health primary and specialty care clinics, the UCLA Health Homeless Healthcare Collaborative and the UCLA Faculty Practice Group.

Spisso is responsible for all aspects of the health system and the regional outreach strategy in the local, state, national and international programs. Spisso received a master's degree in health care administration and public administration from the University of San Francisco, and a bachelor's degree in health sciences from Chapman College.

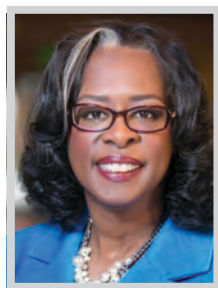


**JULIE J. SPRENGEL**

*President & Chief Executive Officer  
CommonSpirit Health, California Region*

Julie Sprengel is the president and chief executive officer for CommonSpirit Health's California Region, providing executive leadership to healthcare delivery systems spanning 650 miles statewide. Sprengel oversees nearly 40,000 dedicated employees and 10,000 physicians, encompassing 31 acute-care hospitals, a dozen Graduate Medical Education programs and hundreds of ambulatory care sites.

Sprengel helped pave the way for historic partnerships with Charles R. Drew University School of Medicine and Science, where she serves on the executive board and she was recently appointed secretary/treasurer on the Executive Board of Trustees for the California Hospital Association (CHA).

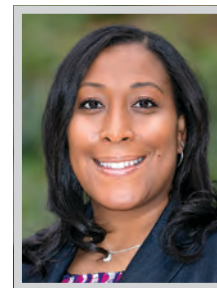


**ANGELA TALTON**

*Senior Vice President; Chief Diversity,  
Equity and Inclusion Officer  
City of Hope*

Angela L. Talton, MBA, is City of Hope system senior vice president and chief diversity, equity and inclusion officer. In this role, Talton leads the development of City of Hope's vision and strategy for advancing diversity, equity and inclusion (DEI), improving health equity and community benefit, and ensuring measurable DEI progress across administrative, clinical and research functions. Talton's broad expertise in diversity and inclusion encompasses leadership development, recruitment and retention of talent, communication strategy, community alliances, philanthropic giving, supplier diversity and analytics.

In her two years with City of Hope, Talton has created a holistic and integrated DEI vision, strategy and implementation roadmap, leveraging scenario-based training and diversity scorecards to mitigate bias and change behaviors to focus on conscious inclusion throughout the system. Under her leadership, City of Hope has improved its ranking on DiversityInc's list of Top Hospitals and Health Systems from #8 to #6.



**JOI TORRENCE-HILL**

*Chief of Operations  
USC Norris Cancer Hospital*

In her three years at the USC Norris Cancer Hospital, Joi Torrence-Hill has overseen many advancements and innovations. Under her leadership, the hospital has continued to be ranked among the top cancer centers in the nation and been named a 'Top Teaching Hospital' nationally by The Leapfrog Group, recognizing the organization's quality and patient safety for the third year in a row. The hospital has also expanded access to CAR-T cell therapy, a newer class of treatment for cancer patients; and grown its bone marrow transplant program exponentially.

Torrence-Hill and her team implemented a pathway to safely treat COVID-19-positive patients in a hospital with significantly immune-compromised patients. She also launched a multidisciplinary patient-facing oncology care model pilot that optimizes patient speed to access and journey through cancer services across the hospital and many disciplines. Under her stewardship, the hospital has also experienced exponential growth in ambulatory and infusion volumes.

**WOMEN OF INFLUENCE**

**HEALTH CARE**



**Congratulations, Johnese Spisso, MPA**

*President, UCLA Health  
CEO, UCLA Hospital System  
Associate Vice Chancellor, UCLA Health Science*

for being recognized as one of L.A.'s Women of Influence.

Your vision and compassionate leadership inspire the entire UCLA Health family and the communities that it serves throughout Southern California and the world.



## WOMEN OF INFLUENCE: HEALTH CARE

**TU TRAN**

*Nursing Director of Operations  
Advanced Hair Restoration*

**A**s nursing director of operations at Advanced Hair Restoration, Tu Tran has played a pivotal role in fortifying, stabilizing and expanding the organization's medical team across six states. Her unwavering commitment to the success of our hair restoration company is evident in her tireless efforts to nurture and develop medical professionals.

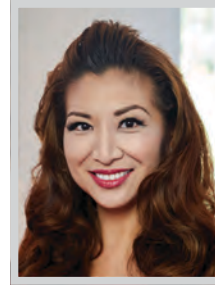
Tran is known for leading by example, working shoulder to shoulder with her team, and embodies the true essence of dedication to the hair restoration medical craft. Her relentless pursuit of excellence has not only strengthened our team but has also set a standard for commitment and professionalism. In the dynamic and challenging field of hair restoration, Tran stands out as a beacon of inspiration. Her contributions have been instrumental in the growth and success of our organization. Her peers and colleagues consider her a guiding force, a mentor and a symbol of excellence in the organization's leadership.

**MURIELLE VÉNIANT-ELLISON**

*Scientific Vice President of Research,  
Cardiomatabolic Disorders  
Amgen*

**M**urielle Véniant-Ellison heads a group in Amgen's Department of Cardiomatabolic Disorders, Discovery Research, with a focus on early-stage drug development for obesity and heart failure indications. She previously played a central role in developing Amgen's diabetes program. Since 2000, Véniant-Ellison has been a key member in the Cardiomatabolic Disorders leadership team and has guided large and small molecule candidates from basic research to Phase 1 clinical trials.

Véniant-Ellison's interest in science originated from her childhood experiences in a small village in France. She earned a Ph.D. in Pharmacology from the University of Dijon. Following a post-doctoral fellowship and research, Véniant-Ellison joined Amgen in 2000. Her team focused on discovering effective weight loss molecules, leading to potential therapies for obesity in Amgen's clinical pipeline. In 2021, Véniant-Ellison, made history as the first industry-based scientist to give the Havel Lecture at the Deuel Conference on Lipids, an esteemed event in lipid research.

**PANNEY WEI**

*Chief Empowerment Officer  
See the Way Consulting*

**P**anney Wei is an award-winning motivational speaker and certified hypnotherapist, specializing in the power of the mind to reach its potential, overcome obstacles, and empowering people to achieve their personal and professional dreams. She is the chief empowerment officer of See the Way Consulting, helping individuals – especially women – to unleash their potential through hypnotherapy, motivational speaking, leadership training, keynotes and workshops.

Wei has been practicing in the behavioral science and mind body psychology field for over 17 years. Through her workshops, speaking engagements and podcast, "See the Way with Panney Wei," she has helped countless of women and men maintain inner strength and optimism in their lives, heal their past traumas and move forward to heal their past, so they can move more boldly in the future and achieve ultimate happiness in life.



# Congratulations!



**Claudia Muñoz, MD, MPH**  
Medical Director of Neurosciences

Emanate Health congratulates Dr. Claudia Muñoz on being named to the 2024 list of Women of Influence in Health Care. Dr. Muñoz is among our team of dedicated, highly-skilled physicians who lead the charge in providing world-class care to the San Gabriel Valley region. Our top-tier physicians provide inspiring stewardship in living our mission to help patients keep well in body, mind and spirit by providing quality care in a safe and compassionate environment.

**Your Community. Your Hospitals.  
Your Doctors.  
Bringing Care Closer to Home.**

Learn more at [EmanateHealth.org](https://EmanateHealth.org)  
or  
Follow us for our most recent news



# AMA Urges Public to Get Vaccinated Amid Growing Measles Outbreaks

With an increasing number of measles cases reported across the US and globally, vaccination rates declining and spring break travel beginning, the American Medical Association (AMA) last month issued a statement urging individuals to get vaccinated against the measles if not already immune.

“As many Americans begin spring break travel, the AMA urges everyone who isn’t vaccinated to get themselves and their families vaccinated against the measles,” said Jesse M. Ehrenfeld, MD, MPH, president, American Medical Association. “Measles is extremely contagious and can cause life-threatening illness. Vaccination not only prevents infection, measles-related complications and even death, but also helps prevent further spread to loved ones, neighbors, co-workers and others in close contact.”

“As evident from the confirmed measles cases reported in 17 states so far this year, when individuals are not immunized as a matter of personal preference or misinformation, they put themselves and others at risk of disease—including children too young to be vaccinated, cancer patients and other immunocompromised people,” Dr. Ehrenfeld added. “The overwhelming scientific evidence shows that vaccines remain among the most effective and safest intervention to both prevent individual illness and protect the health of the public.”

When immunization rates are high, people



who cannot be protected directly by vaccines are protected because they are not exposed to the disease. However, according to the Centers for Disease Control and Prevention (CDC), the rate of vaccinations against measles in the US has declined since 2019—putting more people at risk of illness, disability and death. The reduction in measles vaccination threatens to erase many years of progress as this previously eliminated vaccine-preventable disease returns. In fact, with lower vaccination coverage among kindergarteners during the 2022–23 school year, the CDC estimates that approximately 250,000 kindergartners are at risk for measles infection.

“We are reminding physicians to talk with their patients about the health risks associated with not being vaccinated and to make a strong recommendation for vaccinations, unless medically inadvisable,” said Dr. Ehrenfeld. “We also urge physicians to educate patients on the signs and symptoms, severity and complications of measles given that many people are unfamiliar with the impact of the disease.”

The American Medical Association is the physicians’ ally in patient care. As the only medical association that convenes 190+ state and specialty medical societies and other critical stakeholders, the AMA represents physi-

**‘The overwhelming scientific evidence shows that vaccines remain among the most effective and safest intervention to both prevent individual illness and protect the health of the public.’**

cians with a unified voice to all key players in health care. The AMA leverages its strength by removing the obstacles that interfere with patient care, leading the charge to prevent chronic disease and confront public health crises and, driving the future of medicine to tackle the biggest challenges in health care.

The AMA will continue to support evidence-based vaccines to help prevent measles infection and protect public health.

For more information about the measles, current outbreaks and resources for talking to parents about vaccines, visit [CDC.gov](https://www.cdc.gov).

## OPEN YOUR EYES to Doheny Eye Institute

Women leading the way to restoring human eyesight.

For over 75 years, Doheny Eye Institute research has found new treatments for glaucoma, macular degeneration and other causes of visual impairment.

Blinded at age 69, philanthropist Carrie Estelle Doheny began what became Doheny Eye Institute. Today it’s led by outstanding women in healthcare and is one of the top 5 ranked Ophthalmology programs by US News & World Report.

**Meet Marissa Goldberg**

Chief Executive Officer

Leading and expanding our research initiatives, having worked for 20 years alongside the late Dr. Steven Ryan, visionary and former Doheny President

**Meet Deborah Ferrington, PhD**

Chief Scientific Officer

Internationally recognized for ground-breaking research on age-related macular degeneration (AMD)

**Open Your Heart...**

And donate to continue our research to conserve, improve and restore human eyesight.

**LEARN MORE & DONATE AT DOHENY.ORG**



Best in the West, Top 5 in the Nation

At the forefront of vision science through research, we lead the way in finding cures.

Affiliated with **UCLA** Stein Eye Institute

WOMEN OF INFLUENCE: HEALTH CARE

# Health Researchers Identify Brain Connections Associated with ADHD

Large study finds atypical interactions between the frontal cortex and information processing centers deep in the brain

Researchers at the National Institutes of Health (NIH) have discovered that symptoms of attention-deficit/hyperactivity disorder (ADHD) are tied to atypical interactions between the brain's frontal cortex and information processing centers deep in the brain. The researchers examined more than 10,000 functional brain images of youth with ADHD and published their results in the American Journal of Psychiatry. The study was led by researchers at NIH's National Institute of Mental Health (NIMH) and National Human Genome Research Institute.

Luke Norman, PhD, a staff scientist in the NIMH Office of the Clinical Director, and colleagues analyzed brain images supplied by more than 8,000 youth with and without ADHD sourced from six different functional imaging datasets. Using these images, the researchers examined associations between functional brain connectivity and ADHD symptoms.

They found that youth with ADHD had heightened connectivity between structures

The findings from this study help further our understanding of the brain processes contributing to ADHD symptoms.

deep in the brain involved in learning, movement, reward, and emotion (caudate, putamen, and nucleus accumbens seeds) and structures in the frontal area of the brain involved in attention and control of unwanted behaviors (superior temporal gyri, insula, inferior parietal lobe, and inferior frontal gyri).

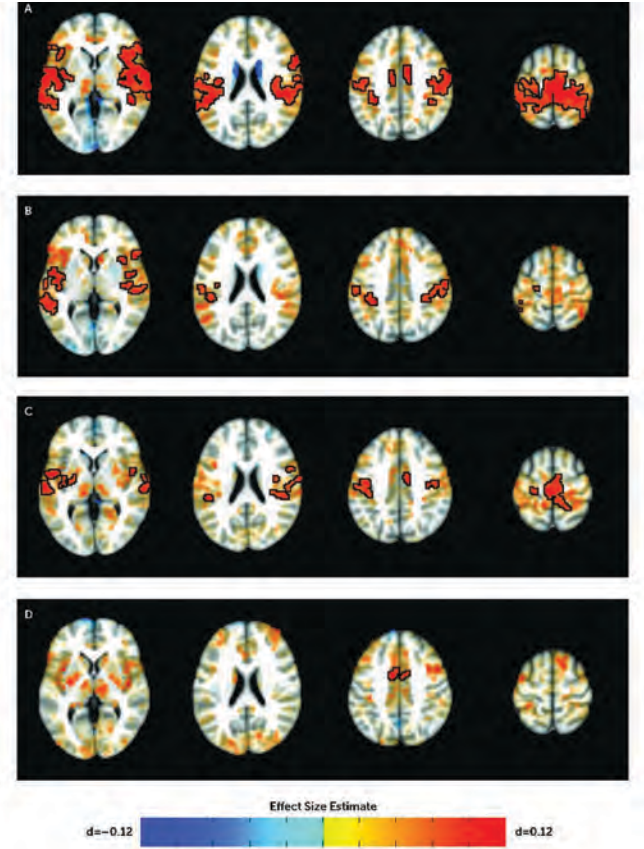
While neuroscience researchers have long suspected that ADHD symptoms result from atypical interactions between the frontal cortex and these deep information-processing brain structures, studies testing this model have returned mixed findings, possibly due to the small nature of the studies, with only 100 or so subjects. Researchers suggest that the smaller studies may not have been able to reliably detect the brain interactions leading to the complex behaviors seen in ADHD.

The findings from this study help further our understanding of the brain processes contributing to ADHD symptoms—information

that can help inform clinically relevant research and advancements.

The mission of the NIMH is to transform the understanding and treatment of mental illnesses through basic and clinical research, paving the way for prevention, recovery, and cure.

NIH, the nation's medical research agency, includes 27 Institutes and Centers and is a component of the US Department of Health and Human Services. NIH is the primary federal agency conducting and supporting basic, clinical, and translational medical research, and is investigating the causes, treatments, and cures for both common and rare diseases. For more information about NIH and its programs, visit [nih.gov](http://nih.gov).



This image of brain scans shows differences in subcortico-cortical connectivity in youth with and without ADHD.

## NOMINATE TODAY!



### LOS ANGELES BUSINESS JOURNAL **HEALTH CARE** 2024 **LEADERSHIP AWARDS**

#### KNOW AN OUTSTANDING HEALTH CARE LEADER?

Join the Los Angeles Business Journal in recognizing the accomplishments of the health care leaders providing better quality health care in LA.

**Nominate an individual or organization for the 2024 Health Care Leadership Awards today!**

NOMINATION DEADLINE  
**FRIDAY, JUNE 14**

To nominate, visit [labusinessjournal.com/events/hclawards](http://labusinessjournal.com/events/hclawards)