

BRANDED CONTENT

JUNE 10, 2024

LOS ANGELES BUSINESS JOURNAL

WOMEN'S LEADERSHIP SYMPOSIUM & AWARDS 2024

The Nominees



PLATINUM SPONSORS



GOLD SPONSORS

American Cancer Society | Arizona State University | Boys & Girls Club of the West Valley | CBIZ MHM
David Nazarian College of Business & Economics at CSUN | Doheney Eye Institute | Fifth Third Bank | IMA Financial Group
L.A. Care Health Plan | McDermott Will & Emery | The New Mart | Optiv | PNC Bank | We Rock the Spectrum Kids Gym
Withum | Youth With A Purpose

LOS ANGELES BUSINESS JOURNAL
WOMEN'S
 LEADERSHIP SYMPOSIUM
 & AWARDS 2024

THE WOMEN'S LEADERSHIP SYMPOSIUM & AWARDS

Thursday, June 13 | Intercontinental Los Angeles Downtown

Join us on Thursday, June 13th as we honor and celebrate the terrific women business leaders in the Los Angeles community with our awards ceremony, the 2024 Women's Leadership Awards.

With 333 nominees (appearing in the pages of this issue), there are clearly many accomplished and impactful leaders to draw inspiration from. This year, we will name honorees in the following categories:

- CEO of the Year
- Champion of Women
- Community Impact Advocate
- Emerging Woman-Owned Business Leader
- Executive of the Year
- Innovator of the Year
- Mentor of the Year
- NextGen Woman of the Year
- Woman to Watch

It's an event you won't want to miss!

SYMPOSIUM BREAKFAST

8:00AM REGISTRATION, NETWORKING & BREAKFAST

9:00AM WELCOME & INTRODUCTIONS

PANEL DISCUSSIONS

9:10AM DEVELOPING TOMORROW'S NEXTGEN LEADERS

9:50AM ADVICE TO MY 25-YEAR-OLD SELF

10:30AM WOMEN EMBRACING TECH & INNOVATION

11:10AM LEADING WITH AUTHENTICITY

AWARDS LUNCHEON TO FOLLOW

To register, visit labusinessjournal.com/events/wlsa2024

CBIZ | MHM
 TAX | ACCOUNTING | ADVISORY

CONGRATULATIONS TO OUR COLLEAGUES,
Cheryl Calhoun, Kelly O'Neil, Betty Liu & Shannon Pearce

on being nominees for the Los Angeles Business Journals' **2024 WOMEN LEADERSHIP AWARDS**



Cheryl Calhoun
 Managing Director



Betty Liu
 Director



Kelly O'Neil
 Managing Director



Shannon Pearce
 Senior Manager

[CBIZ.COM/LOSANGELES](https://cbiz.com/losangeles) | [MHMCPA.COM/LOSANGELES](https://mhmpca.com/losangeles)

LOS ANGELES BUSINESS JOURNAL
WOMEN'S
 LEADERSHIP SYMPOSIUM
 & AWARDS 2024

The Nominees



Adelara Adekoya
 CEO; Founder
 Fleurs et Sel



Claudia Afshar
 Principal; Founder
 Claudia Afshar Design



Susie Albin-Najera
 Director of Leisure Travel &
 Strategic Partnerships, US Market
 Los Cabos Tourism Board



Marissa Alguire
 Deputy Chair, Labor and Employment
 Practice Group
 Akerman LLP



Natalie Alvarez
 Realtor
 The Agency



Cindy Ambuehl
 Executive Director, Luxury Estates
 Christie's International Real Estate



Belva Anakwenze
 Entertainment Business Manager
 Abacus Financial Business Management



Arielle Anderson
 Partner; Senior Advisor
 Westmount Partners



Hayley Antonian
 President; Co-Founder
 Scenario Communications



Cassy Aoyagi
 President; Co-Founder
 FormLA Landscaping



Rosa Arevalo
 Estimating / Outreach Manager
 Webcor



Rainy Austin
 President
 The Agency



Nicole Auyang
 Head, Business Community Banking
 City National Bank



Kiki Ayers
 CEO
 Ayers Publicity



Erica Balin
 Principal
 Lee & Associates- LA North/Ventura



Carol Bates
 Private Wealth Advisor
 Strategic View Advisors



Allegra Batista
 Manager, Communications
 Applebee's



Shameka Beaugard
 Founder
 Youth with a Purpose



Theresa Becerra
 Partner
 Spencer Fane LLP



Carrie Bell
 Director, Culver City Safe Sleep Village
 Urban Alchemy



Patrice Bening
 Wealth Advisor
 Morton Wealth



Chante Bernard
 Founder & CEO
 Cakes By Chante



Barbara Bernstein
 Wealth Management Advisor
 Fortuna Wealth Management, Legacy
 Strategies and Insurance Solutions



Michele Bernstein
 Owner; President
 Michi B, Inc



Kavitha Bhatia, MD, MMM, FAAP, FACHE
 President; Chair
 Prime Healthcare Foundation
 Chief Medical Officer, Strategy
 Prime Healthcare



Tania Birker
 Booking Manager
 VOX DJs



Deborah Birndorf-Zeiler
 Partner
 Norton Rose Fulbright



Kara Boccella
 Partner
 Certuity



Giovanna Brasfield
 CEO
 Brasfield & Associates LLC



Charlotte Bruner
 Senior Vice President,
 Los Angeles Brand Lead
 Edelman



Lisa Buckley
 Managing Director
 VaynerMedia LA



Cheryl Calhoun
 Managing Director
 CBIZ, Inc.



Mary Craig Calkins
 Partner, Insurance Recovery
 Blank Rome LLP



Kaitlynn Campbell
 Catering Sales Manager
 Jonathan Club



Nicole Cannon
 Principal
 NCA Studio



Judy Carpenter
 Head, Medical Network Operations
 Akido Labs



Jessica Carrera
 Director of AmeriCorps - Seniors RSVP
 L.A. Works



Allison Carroll
 Design Director
 Nadia Geller Designs



Diana Ramos Santiago Carter
 CEO; Founder
 Panther Trail Films Production



Rachel Castillo
 Transaction Manager
 Avison Young



Alisha Cathirell-Tanzer
 Director, AmeriCorps VISTA -
 State and National
 L.A. Works



Meredith Cavallaro
 Partner
 Paduano & Weintraub LLP

LOS ANGELES BUSINESS JOURNAL
WOMEN'S
 LEADERSHIP SYMPOSIUM
 & AWARDS 2024

The Nominees



April Chang
 Design & Project Manager
 Webcor



Cheryl S. Chang
 Partner & Vice-Chair, Financial Institutions
 Litigation and Regulatory Compliance;
 Co-Chair, Los Angeles Office
 Blank Rome LLP



Cyndie M. Chang
 Managing Partner, Los Angeles Office
 Duane Morris LLP



Felicia Chang
 Head of Wealth Strategy
 Westmount Partners



Shawna Charles
 Media Relations Specialist
 Charles Communications Group



Julisa Chavez
 Development Manager
 DIY Girls



Kitty Chen
 Senior Managing Director,
 Head of Retail & Business Banking
 East West Bank



Sandra Cho
 President and Founder
 Pointwealth Capital Management



Andrea Choe
 Co-Founder and CEO
 Holoclara



Leigh Christy
 Principal
 Perkins&Will



Anna Chung
 Executive Vice President & Chief Small
 Business Administration Lending Officer
 Hanmi Bank/ Hanmi Financial Corporation



Nicole Clark
 CEO & Co-Founder
 Trelis



Hillary Cohen
 Co-Founder & CEO
 Every Day Action



Randi Cohen
 Vice President
 Beta



Moira Conlon
 Founder & CEO
 Financial Profiles



Katy Conroy
 Partner
 Sklar Kirsh LLP



Lauren Corugedo
 Head of Marketing
 Chef Merito



Megan Creecy-Herman
 President, West Region
 Prologis



Adrianna Cruz
 President
 U-FRAME-IT GALLERY



Jane Davidson
 Litigation Associate
 Munck Wilson Mandal



Alexa Delahooke
 Senior Associate
 Cushman & Wakefield



Rosa Delgado
 Senior Project Manager
 Clayco



Melissa Demirci
 Principal
 Transtech Engineers, Inc.



Shaina Denny
 Co-Founder and CEO
 Dogdrop



Amanda Depierro
 Senior Associate
 Colliers



Christine Deschaine
 Senior Vice President
 Kennedy Wilson Brokerage



Christine Devine
 News Anchor
 KTTV Fox 11 News



Michelle Diamond
 CEO
 Elevate Diamond Strategy &
 Diamond Executive Resumes



Kelli Dillon
 Founder; Executive Director
 Back to the Basics, Los Angeles



Alesha Dominique
 Partner
 Norton Rose Fulbright



Erin Donovan
 Partner
 Musick, Peeler, & Garrett LLP



Rosemarie Chiusano Drohan
 Executive Vice President, Business Development
 Judicate West



Ava DuVernay
 Founder
 Array



Kathryn Edgerton
 Member
 Mintz



Amber Estorga
 Founder
 Fore Gals Golf



Leslie Evans
 Associate Consultant
 Turner & Townsend Heery



Ariel Fan
 Founder & CEO
 GreenWealth Energy



Susan Fries
 CEO
 Ecola Termite & Pest Control



Melissa Fulmer
 Regional Sales Manager
 Wells Fargo



Penelope Gallegos
 Director of Business Development
 Executive Mental Health



Sheenika Gandhi
 Chief Marketing Officer
 Greenberg Glusker LLP



Meredith Gee
 Product Design Lead
 Akido

LOS ANGELES BUSINESS JOURNAL
WOMEN'S
 LEADERSHIP SYMPOSIUM
 & AWARDS 2024

The Nominees



Nadia Geller
Principal and Managing Director
 Nadia Geller Designs



Mitchella Gilbert
Founder
 Oya Femtech Apparel



Kathleen Gilmore
Chair; President; Principal
 Clifford Swan Investment Counselors



Tina Giorgadze
Associate Principal
 Perkins&Will



Marissa Goldberg
CEO
 Doheny Eye Institute



Kristina Goldman
Realtor
 Equity Union Real Estate



Susana Gomez
Associate Director, Marketing and Communications
 DIY Girls



Corrina Grabis
Director, Client Relations
 RAM Construction



Simona Grace
Vice President
 Commission on the Status of Women,
 Los Angeles



Michelle Graci
Agent
 The Beverly Hills Estates



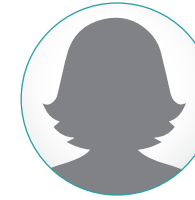
Anneke Greco
Executive Vice President
 Colliers



Ashley Grizzle
Portfolio Management Officer
 Bank of America



Erin Hallissy
Partner
 SCHONBUCH HALLISSY LLP



Danielle Hari
Chief of Oncology Surgery
 Harbor UCLA



Lucy Hartford
Vice President
 NAI Capital Commercial



Sarah Hartman
Partner
 Jeffer Mangels Butler & Mitchell LLP



Michele Havens
President, West Region
 Northern Trust



Elva Hernandez
Vice President of Accounting
 CIRE Equity



Jane Hinton
Partner
 Hunton Andrews Kurth LLP



Gwendolyn Hogans
Board Member
 Women of Blue and White



Ileana Holguin
Vice President



Cathy J. Hood
President; CEO
 Pristine Initiative



Lisa Hsiao
Partner
 Musick, Peeler, & Garrett LLP



Neela Hummel
Co-CEO
 Abacus Wealth Partners



Kristin Hundley
Director of Operations
 Limousine Connections



Carolyn Hunt
Partner
 Barnes & Thornburg LLP



Maria Hunter
SVP, Relationship Manager Team Lead
 Enterprise Bank & Trust



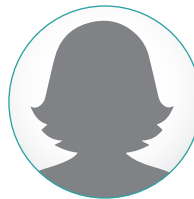
Serena Hwong
Controller
 Avison Young



Shadi Jahangir
Partner, Finance
 Blank Rome LLP



Kat Janowicz
CEO
 3COTECH, Inc.



Connie Jensen
Assistant Superintendent
 Long Beach Unified



Mei-Lon Jimenez
Co-Founder & CEO
 Chica Beauty



Toni Jimenez
Co-Founder & CEO
 Chica Beauty



Amy Johnson
VP
 Perennial Financial Services



Arwen Johnson
Partner
 King & Spalding



Ginger Jonas
Vice President, Employee Benefits
 USI Insurance Services



Liz Juarez
Assistant Controller
 Dine Brands Global



Beth Kahn
Partner
 Musick, Peeler, & Garrett LLP



Rosalyn Kahn
President
 A&R Media



Sonia Smith Kang
CEO
 Mixed Up Clothing



Alice Kao
Co-Founder, CEO
 Sender One Climbing



Jenna Kaplan
Associate Broker
 Aon

LOS ANGELES BUSINESS JOURNAL
WOMEN'S
 LEADERSHIP SYMPOSIUM
 & AWARDS 2024

The Nominees



Eliza Karagezian
*Real Estate & Customer Experience,
 Senior Manager*
 Prologis



Nurit Katz
Chief Sustainability Officer
 UCLA



Lisa Kaup
Vice President Relationship Manager
 Banc of California



Cindy Keefer
CEO
 Fashion Tech Works LLC



Kacy Keys
Principal & CEO
 Praxis Development Group



Helen Kim
Partner
 Norton Rose Fulbright



Julia Kim
CEO
 Allmerits HealthCare &
 Insurance Services, Inc.



Dina Kimmel
CEO
 We Rock the Spectrum Kid's Gym



Smriti Kirubanandan
Managing Director
 Accenture



Stacey Klein
Senior Community Relations Specialist
 Logix Federal Credit Union



Lee Ann Kline
President & Founder
 STEM Advantage



Jenna Knudsen
Managing Principal
 CO Architects



Lisa Kolieb
Partner, Real Estate, Land Use and Development
 Akerman LLP



Sara Kornblatt
Partner
 Gibbs Giden Locher Turner Senet
 & Wittbrodt



Linda Kornfeld
*Partner,
 Co-Chair, Insurance Recovery Practice*
 Blank Rome LLP



Tara Krahe
*Environmental Engineer;
 Section Manager, California*
 Burns & McDonnell



Supriya Kulkarni
Sr. Project Consultant
 Turner & Townsend Heery



Deborah La Franchi
CEO
 SDS Capital Group



Anderson Lafontant
Managing Director
 Miracle Mile Advisors



Marie LaMolinara
Partner
 Meyer, Olson, Lowy & Meyers



Tina LaMonica
Executive Vice President
 NAI Capital Commercial



Diane Luby Lane
Founder; CEO
 GetLit



Lisa Laurent, MD
Chief Medical Officer
 Providence Saint Joseph
 Medical Center



Monique Lawshe
Partner
 GHC Housing Partners LLC



Cheryl Lee
Executive Director, Media and Analytics
 Intertrend Communications



Eunice Lee
Chief Operating Officer
 Scopely



Jaime Lee
CEO
 Jamison Realty Inc.



Josie Leinart
Co-lead of NIL Practice
 Munck Wilson Mandala



Lisia Leon
Partner
 Paduano & Weintraub



Julia Leonard
VP of Operations
 Matthews Real Estate
 Investment Services



Marissa Lepor
*Director, Head of Beauty &
 Personal Care*
 The Sage Group



Barbara Levine
Director
 Los Angeles Economic
 Development Corporation



Jamie Lewin
Client Relations Manager
 Art Lewin Bespoke



Chenxi Li
Associate, Real Estate
 Akerman LLP



Jennifer Lieser
Partner
 Kaplan Marino, PC



Rhiana Lindsey
Director, Leasing Services
 Primistor



Betty Liu
Director
 CBIZ, Inc.



Nicole Lueddeke
Associate
 Paul Hastings LLP



Brooke Lykins
Deputy Chief Executive Officer
 Heart of Los Angeles (HOLA)



Catherine MacAdam
Project Manager
 Clune Construction



Karen Mack
CEO
 LA Commons



Mahru Madjidi
Shareholder
 Shegerian & Associates

LOS ANGELES BUSINESS JOURNAL
WOMEN'S
 LEADERSHIP SYMPOSIUM
 & AWARDS 2024

The Nominees



Rochelle Atlas Maize
 Executive Director, Luxury Estates Division
 Nourmand & Associates



Dr. Narineh Makijan
 Assistant Vice President; Chair
 Los Angeles Regional Consortium



Leslie Margolin
 Head, Healthcare Networks
 Akido Labs



Nina Marino
 Partner
 Kaplan Marino



Sheila Marmon
 Founder; CEO
 Mirror Digital



Marianne Martin
 Partner
 Jeffer Mangels Butler & Mitchell LLP



Laura Mason
 Senior Associate
 Kayne Anderson Growth Capital



Maja Matarifa
 Chan Soon-Shiong Chair and
 Distinguished Professor of Computer
 Science, Neuroscience, and Pediatrics
 University of Southern California



Katrina Matthews
 Founder; Principal Agent
 Katrina Matthews Real Estate
 Investment Group, Inc.



Kiesha McCann
 DEI & Engagement Manager
 Kinecta Federal Credit Union



Laura McHolm
 Co-Founder; Marketing Director
 NorthStar Moving Company



Kimberlina McKinney
 Senior Counsel
 Newell Law Group



Stacey McKinnon
 Chief Operating Officer;
 Chief Marketing Officer
 Morton Wealth



Nella McOsker
 President & CEO
 Central City Association



Jacquelinne Mejia
 CEO; Founder
 My Resume Squad



Sheri Messerlian
 Executive Vice President
 NAI Capital Commercial



Lisa Helfend Meyer
 Founding Partner
 Meyer, Olson, Lowy & Meyers



Felicia Meyers
 Founding Partner
 Meyer, Olson, Lowy & Meyers



Christina Miller
 President; CEO
 Mental Health America of Los Angeles



Janice Miller
 Managing Partner
 Miller Haga Law Group LLP



Nancy Miret
 General Manager
 Lincoln Property Company



Kayoko Mitsumatsu
 Founder
 Yoga Gives Back



Erica Moore-Burton, Esq.
 Founder & President
 Round Hill Legal Search



Alina Moran
 President and CEO
 Dignity Health - California Hospital
 Medical Center



Tania Moyron
 Partner; Chair, US Restructuring,
 Insolvency and Bankruptcy Group, US
 Region; Co-Chair, Global Restructuring,
 Insolvency and Bankruptcy Group
 Dentons



Lisa Murgia
 Regional Sales Manager
 Wells Fargo



Jaime Nack
 President
 Three Squares Inc.



Ekta Naik
 SVP, Development
 SOLA Impact



Alenoosh Giragousian Namagerdi
 Director, Revenue Cycle Management
 HRC Fertility



Farzana Nayani
 Founder; CEO
 Farzana Nayani,
 Consulting & Training



Lizbeth Nevarez
 Managing Director
 GHJ



Vicki Newnam
 Chief of Staff
 DrinkPAK



Shandrea Niblett
 Chief Operating Officer
 Spectrum Commercial Real Estate, Inc.



Lauren Nielsen
 Director of Client Experience
 GCX



Myra Nourmand
 Principal and Agent
 Nourmand & Associates



Antonia O'Hara
 Founder
 Indigo by Boutin



Kelly O'Neil
 Lead Managing Director
 CBIZ, Inc.



Rose O'Sullivan
 Executive Vice President
 NAI Capital Commercial



Connie Orlando
 Executive Vice President of Specials,
 Music Programming & Music Strategy
 BET Media Group



Jessica Orlando
 Associate Principal, Higher Education
 Practice Leader, Los Angeles
 Perkins&Will



Carissa Ortega
 Co-Owner
 CO Creative Cartel, LLC



Joslyn Osborn
 Co-Managing Partner
 Vaco Los Angeles

LOS ANGELES BUSINESS JOURNAL
WOMEN'S
 LEADERSHIP SYMPOSIUM
 & AWARDS 2024

The Nominees



Crystal Osejo
 Senior Vice President, Production
 Services Operations
 Hudson Pacific Properties



Anoosheh Oskouian
 President and CEO
 Ship & Shore Environmental, Inc.



Candice Paik
 CEO
 Tallywell



Paulette Pantoja
 CEO; Founder
 Blu Digital Group



Alison Pappas
 Partner
 Crosbie Gliner Schiffman Southard &
 Swanson LLP (CGS3)



Tami Pardee
 Founder; CEO
 Pardee Properties



Grace Park
 CEO
 Nuleep



Soo Park
 Partner
 Barnes & Thornburg LLP



Prital Patel
 Vice President; Design Director
 PBS Engineers, Inc



Kanan Patel-Coleman
 Environmental Project Manager
 Burns & McDonnell



Shannon Pearce
 Senior Manager
 CBIZ, Inc.



Emily Pincin
 Partner
 Kent | Pincin, LLP



Diedra Porché
 National Head, Community and
 Business Development
 JPMorgan Chase



Heather Quinn
 Wealth Management Advisor
 Fortuna Wealth Management, Legacy
 Strategies and Insurance Solutions



Brenda Radmacher
 Partner, Litigation, Construction
 Akerman LLP



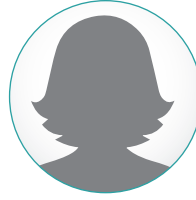
Caroline Raffi
 Vice President, Enterprise
 Ducere Global Business School



Geovanny Ragsdale
 Chief Executive Officer
 Boys & Girls Club of the West Valley



Elisa Ramos
 Regional Director of Operations
 HRC Fertility



Judy Ranan
 Executive Director
 Cystic Fibrosis Foundation



Bee Rarewala
 Chief Strategy Officer
 AC Martin



Kimberly Ravenell
 Partner
 Withum



Lauren Ravitz
 Luxury Director
 Berkshire Hathaway HomeServices
 California Properties



Angela Reddock-Wright
 Mediator, Employment & Title IX Law
 Signature Resolution / Reddock Law



Lisa Reddy
 Vice President, Leasing Officer
 Prologis



Sunitha Reddy, MBA, MPH, FACHE
 Chief Revenue;
 Vice President of Operations
 Prime Healthcare



Tracy Redmond
 Director of Product Marketing &
 Management
 IHOP



Kristen Richer
 Partner
 Barnes & Thornburg LLP



Heather Rim
 Chief Marketing Officer
 Optiv



Sarah Roberts
 President
 Ballantines PR



Ellen Robbins
 Partner, Litigation
 Akerman LLP



Elisa Rodriguez
 Social Media Coordinator
 L.A. Works



Yansy Rolan
 Vice President
 Avison Young



Ally Rooney
 Associate Broker
 Aon



Linda Rosenberg
 Strategic Business Advisor
 California Manufacturing Technology
 Consulting (CMTC)



Erin Ross
 CEO
 Girls Inc. of Los Angeles



Patty Ross
 CEO
 Golden State Marketing LLC



Miri Rossitto
 Founder; CEO
 Cowe Communications



Jacqueline Roth
 President, Employee Benefits
 IMA Financial Group



Lori Roth
 Global Managing Partner
 Prager Metis



Schenae Rourk
 President; CEO
 Redwood Resources



Danielle Roy
 Founder
 Morale Matters



Amy Russell
 Partner
 Ervin Cohen & Jessup LLP

LOS ANGELES BUSINESS JOURNAL
WOMEN'S
 LEADERSHIP SYMPOSIUM
 & AWARDS 2024

The Nominees



Lara Saab
 Managing Director, CBRE Property Management, Greater Los Angeles
 CBRE



Maria Salinas
 President; CEO
 Los Angeles Area Chamber of Commerce



Diana Samuels
 Director of Operations
 HRI



Kristina Sawyer
 Vice President, Lending
 Arixa Capital



Jen Saxton
 Founder & CEO
 Tot Squad



Kathleen Schaffer
 Founder & Creative Director
 Schaffer LA



Carol Schary
 President; Owner
 Nathan Kimmel Company, LLC



Katelyn Schmidt
 Audit Manager
 gishSEIDEN LLP



Lara Schmoisman
 CEO; Founder
 The Darl



Sherry Sedighi
 Partner
 Baker Tilly



Carmel Sella
 Senior Vice President; Senior Director,
 Government Relations
 Wells Fargo



Anabel Serrano
 Risk Management Specialist
 Shawmut Design and Construction



Erin Severson
 Executive Vice President, Los Angeles
 Health Lead
 Edelman



Laurie Sewell
 CEO
 Servicon



Felecia Fisher Shamu
 CEO; Co-Founder
 Vitality Furniture



Shaama Sharada
 Associate Professor of Chemical Engineering
 and Materials Science and Chemistry
 University of Southern California



Sharon Sharp
 Director, Strategic Operations,
 Implementation and Training
 Dine Brands Global



Kathi Sharpe-Ross
 CEO; President
 The Sharpe Alliance



Shawn Sheffield, MBA, MHSA
 Chief Strategy Officer
 Keck Medicine of USC



Gillian Sheldon
 Founder; CEO
 Sheldon Strategy and Consulting



Ivelisse Simon
 Managing Partner
 Avante Capital Partners



Danone Simpson
 Founder, CEO
 Montage Insurance Solutions



Martine Singer
 President & CEO
 Children's Institute



Eimon Smith
 Environmental Project Manager
 Burns & McDonnell



Jacqueline Smith
 Associate Project Manager
 Turner & Townsend Heery



Dr. Stacy Smith
 Founder; Director
 USC Annenberg Inclusion Initiative



Wendy Smith
 Psychotherapist; Retired Clinical Professor
 of Social Work; Associate Dean of
 Curriculum Development & Assessment
 USC Suzanne Dwarak-Peck
 School of Social Work



Johnese Spisso
 CEO, UCLA Hospital System
 UCLA Health



Jessica Sprague
 Tax Director
 gishSEIDEN LLP



Lexi St. John
 Executive Vice President, QYOU +
 General Manager, QYOU Studios
 QYOU Media



Tema Staig
 Executive Director
 Women In Media



Daisy Stall
 EVP, Head of Entertainment Finance
 California Bank & Trust



Paula Stamp
 CEO; Principal
 Geaux Consulting Group



Emily Steenwyk
 Director
 ForensisGroup



Michele Stein
 Chief Operating Officer
 NAI Capital Commercial



Marty Stevens-Heebner
 Founder; Owner
 Clear Home Solutions



Rebecca Strom
 Managing Director
 Hines



Stacey Sullivan
 Partner
 Hill, Farrer & Burrell LLP



Aisha Summers-Burke
 Executive Vice President;
 General Manager, BET Studios
 BET Media Group



Paula Sweis
 Founder and Principal
 SILVERWEISS International



Iliana Tavera
 CEO
 Haven Hills



Julie D. Taylor
 Principal
 Taylor & Company

LOS ANGELES BUSINESS JOURNAL
WOMEN'S
 LEADERSHIP SYMPOSIUM
 & AWARDS 2024

The Nominees



Marie Taylor
 Executive Vice President
 NAI Capital Commercial



Dr. Sara Terheggen
 Founder & CEO
 The NBD Group, Inc.



Vanessa Terzian
 Partner
 Lagerlof, LLP



Olivia Theroux
 Chief Financial Officer, Global Studios
 Hudson Pacific Properties



Julie Ting
 Vice President, Counsel
 Herbalife



Camelia Tourje
 Co-Founder
 Breezeway Air Duct Cleaning



Linda Tulchin
 Founder & President
 The Promotions Dept.



Michell Tutor
 Sales Manager
 CBRE



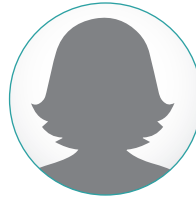
Julie Uhrman
 Co-Founder & President
 Angel City Football Club



Amber Vaatete
 Director, Social Media
 Elev8 New Media



Ana Valdez
 President & CEO
 The Latino Donor Collaborative



Suzette Valladares
 Executive Director
 Little Steps of Faith



Estefany Varela
 Project Coordinator
 Turner & Townsend Heery



Susan Vargas
 Partner
 King & Spalding



Catherine A. Veeneman
 Partner
 Ervin Cohen & Jessup LLP



Natalia Velasquez
 Senior Project Manager
 Turner & Townsend Heery



Carlota Venegas
 Investment Counselor
 Clifford Swan Investment Counselors



Emily Villalba
 Software Engineer
 Sony Pictures Entertainment



Lucy Villanueva
 Vice President
 Clayco



Alexandra Von Tiergarten
 District Director
 Robert Half



Barbara Voss
 Deputy City Manager
 City of El Segundo



Smita Wadhawan
 Chief Marketing Officer
 SimplePractice



Diane Wagner
 Senior Vice President; Project and
 Information Technology Manager
 Republic Business Credit



Brooke Walbuck
 Sr. Director, Business Development
 Webcor



Jenifer Wallis
 Partner; Chair, Entertainment Practice
 Munck Wilson Mandala, LLP



Panney Wei
 Chief Empowerment Officer
 See the Way Consulting



Christine Weil
 Director of Development
 The Wallis Annenberg Center for the
 Performing Arts



Angie Wells
 Makeup Department Head;
 Singer / Songwriter
 SayWhyNot, Inc



Nicole Wilkinson
 Project Management Director
 Turner & Townsend Heery



Lynn Williams
 Vice Chairman
 CBRE



Rayni Williams
 CEO & Founder
 The Beverly Hills Estates



Amanda Wolin
 Partner
 Cox, Castile & Nicholson



Lloyd Wong
 Principal, Investment Counselor
 Clifford Swan Investment Counselors



Anita Wu
 Managing Director
 GHJ



Danielle Yamane
 Lead Staff Information Security Engineer
 The Trade Desk



Emily Yukich
 Partner
 Fox Rothschild



Sally Zesut
 Vice President
 Avison Young



Rosie Zilifyan
 Trial Attorney
 Shegerian & Associates



Katie Zinn
 Senior Vice President, Los Angeles Group
 Strategy Director
 Edelman