

WOMEN OF INFLUENCE: CONSTRUCTION, ENGINEERING & ARCHITECTURE

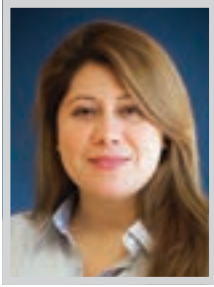


WELCOME TO THE SIXTH EDITION OF OUR ANNUAL SUPPLEMENT HONORING LA'S MOST INFLUENTIAL WOMEN in the construction, architecture and engineering fields. The building industry offers great opportunities for advancement for women. In fact, the industry has managed to avoid any gender pay gap, with women actually making about 1% more than men in average income.

There are a number of particularly stellar women construction professionals in the LA region and we've alphabetically listed some of the best of them here. Congratulations to the extraordinary, trailblazing women who made this list and thank you for your contributions to the Los Angeles economy ... and skyline.

Methodology: The professionals featured in these pages did not pay to be included. Their profiles were drawn from nomination materials submitted to the Los Angeles Business Journal. Those selected for inclusion were reviewed by the editorial department and chosen based on a demonstration of impact made on the profession and on the Los Angeles community.

WOI: CONSTRUCTION, ENGINEERING & ARCHITECTURE

**YOLANDA ANDAS**

Senior Project Manager
W.E. O'Neil Construction Co. of California

With a drive that stems from a deep sense of responsibility and integrity, Yolanda Andas is an exemplary woman of the construction industry who manages numerous fast paced projects over multiple sites. She has been an instrumental part of the growth of W.E. O'Neil's Special Projects Group. She has grown from an assistant project manager to a senior project manager.

Andas has led the firm's Aerospace Special Project Group teams and has led success in that market. In addition to aerospace, she is actively leading projects throughout Southern California for big corporations including Disney, Amazon and Toyota. Where challenges occur, Andas has stood as a leader. She investigates issues, lays out a path to success, and executes these plans with her teams. For example, she took over a recent project manager role after all buyout was complete and turned around the financial forecast of the project to be profitable.

**CASSY AOYAGI**

President; Co-Founder
FormLA Landscaping

Cassy Aoyagi's qualifications include the profound environmental and aesthetic impact of her work, as well the way in which she has raised the bar for the industry. Aoyagi co-owns and leads FormLA Landscaping and is one of the few women leading landscaping companies with construction and maintenance divisions, and on a short list of LA landscaping professionals that hold both Leadership in Energy and Environmental Design (LEED) and Sustainable SITES certifications.

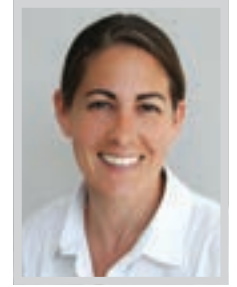
Aoyagi's dedication to sustainability, brought to life through the business, has made a profound impact on LA's resilience to climate change, wildfire and water positivity. She and her team have replaced more than 200,000 square feet of thirsty lawn with lush, leafy, wildlife-supporting habitats. As a result, each year, the company now saves LA well over 10 million gallons of water and reduces air pollution equivalent to eliminating 59 annual commutes from LA roads.

**JENNESYS AVILES**

Project Manager
Suffolk

Throughout her time with Suffolk, Jennesys Aviles has led teams as a direct resource and collaborator for project managers. She runs day-to-day project management operations and ensures safety and quality measures are implemented throughout the lifespan of a construction project while keeping it on time and under budget. Aviles has also stepped into a position of oversight, quality management and technology integration throughout her projects.

Within Los Angeles, Aviles was a hands on leader throughout the development of affordable housing buildings at 6th & San Julian and 3552 Whittier Boulevard, among others. Both projects implemented methods that are revolutionizing the construction industry, specifically through modular construction. In addition to building infrastructure for communities across the country and in Los Angeles, Aviles has received her OSHA 30-Hour Certification and is National Safety Council Advanced First Aid, CPR and AED Certified, further ensuring safety is at the forefront of her work.

**COURTENAY BAUER**

Principal
Verse Design Los Angeles

Courtenay Bauer is a co-founder and principal at Verse Design Los Angeles, an award-winning full-service architectural and planning studio. With more than 20 years of experience in the profession, Bauer's passion for design began at an early age. Today, at Verse Design, Bauer leverages more than 20 years of focused experience in architectural planning, design and contract administration on a variety of projects between the US and China.

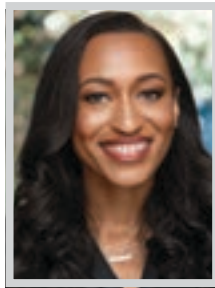
Bauer considers herself an ambassador for her developer clients. She thoroughly researches and leverages all entitlement and zoning opportunities to maximize REI ROI. Bauer is a role model for women in architecture, ensuring that female voices are heard throughout the building design and construction process. She is a talented designer, strong leader and dedicated mentor committed to making a positive difference through her work and is passionate about the education of young architects, helping them to reach their full potential.

**GIOVANNA BRASFIELD**

CEO; Principal Consultant
Brasfield & Associates

Dr. Giovanna Brasfield, commonly known as "Dr. G," has many significant highlights in her career in construction leading diversity & inclusion for large general contractors, both in commercial and civil construction. Dr. G recently served as the highest ranking African American in the US and Canada for Flatiron's Southwest Division as the vice president of project diversity & inclusion leading contract commitments for the Los Angeles World Airport's Automated People Mover Project for small business engagement, local workforce inclusion and youth education.

In October 2021, Dr. G took her knowledge and experience to relaunch her consulting firm Brasfield & Associates. As a consultant, Dr. G now serves more firms within the construction industry with her expertise in DEI and aiding companies with project pursuits in meeting contractual requirements that engage women, diverse businesses, local workforce and youth engagement.

**ADAEZE CADET**

Design Principal, Los Angeles
HOK

Adaeze Cadet's architectural career breaks barriers and misperceptions about the capability of Black women in architecture. Over the past 18 years she overcame discrimination, successfully performed in multiple leadership positions, and produced exceptional designs praised by experts and continuously adds strength to her design teams and mentees.

As design principal at HOK Los Angeles, Cadet shapes the design culture and framework at the Los Angeles studio. In addition to being a talented designer, she is also a registered architect, which allows her to effortlessly switch between project designer and project architect to provide outstanding service for clients for various large-scale confidential entertainment, commercial and science & technology projects. The HOK Los Angeles studio is comprised of 75% female leadership and Cadet is currently the first female design principal at HOK firmwide, opening the door for future female design leaders.

**MABLE CHUNG**

Senior Associate; Project Manager
TCA Architects, Inc.

Mable Chung believes that her most successful career accomplishments to date are providing a place that individuals, families and veterans who have experienced homelessness can call home. Her experience in affordable housing and her contributions to getting people in need off the streets and into housing, have had an altruistic impact to her career in architecture. As a senior associate and project manager at TCA Architects, Inc., Chung has managed the ground-up construction of several affordable, subsidized and workforce housing multifamily projects ranging from 40 to 95 units throughout Southern California.

In a challenging economic climate, Chung is honored that in her profession of architecture, she can make a difference. She believes the success of one's career is not only what one has accomplished, but how one is able to use their knowledge and abilities to help those around them, for a better community, and for a better future.

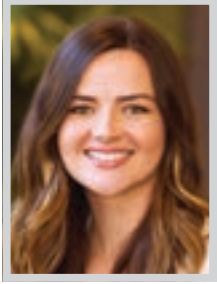
**TALIN ESPINOZA**

Vice President, Business Development, West
Flatiron Corporation

Talin Espinoza is vice president of business development, leading Flatiron's business development efforts for the Southern California, Northern California, Washington and Colorado districts. She has 20 years of experience in the architecture, engineering and construction industry. Espinoza brought to Flatiron knowledge, expertise and industry contacts — but most importantly an enthusiasm for long-term success through sustained relationships with clients.

Espinoza is responsible for developing strong client relationships and a pipeline of work throughout the western United States. She is on the board of directors for Associated General Contractors of California, International Partnering Institute and WTS Los Angeles. She is past president of the Southern California Chapter of the Construction Management Association of America. Espinoza is a co-founder of the Beavers' Women in Heavy Civil. She was recently recognized by the San Diego Chapter of the Women's Transportation Seminar, which honored Espinoza with its 2023 Rosa Parks Diversity Leadership Award.

WOI: CONSTRUCTION, ENGINEERING & ARCHITECTURE

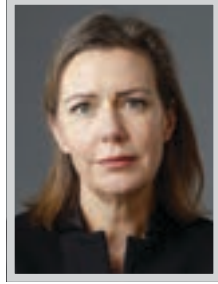


MEGAN FAIRLEY

Senior Integrative Design Manager
McCarthy Building Cos, Inc.

Megan Fairley is highly regarded by her clients, project partners and colleagues for her impressive track record of success and accomplishment. As an integrated design manager at McCarthy Building Companies, Inc. Fairley has a passion for bringing a creative approach to all components of a project. Over her nine-year career, she has successfully delivered large, highly technical multi-million-dollar projects that were long-term complex endeavors. She leads the integrated design pursuit processes through the permitting phase, working closely with the pre-construction, operations and design teams to provide insightful feedback when evaluating, developing and implementing constructible solutions from the documents prepared by the design and engineering teams.

Currently, Fairley is responsible for managing design risks and opportunities, working with the estimating team to maintain budget and design throughout the project, developing and monitoring expectations for schedule and quality, and working with the business development team to form narratives and strategy.

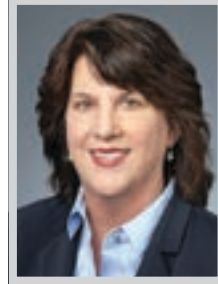


ANNE FLETCHER

Managing Principal, HOK Los Angeles
HOK

It is not the norm for a woman to be the managing principal at one of the largest architecture and engineering companies in the world. Yet, during her five years in Los Angeles, the practice has been delivering over \$5 billion dollars' worth of projects in planning, design or construction across the commercial, corporate, science & technology, healthcare and aviation sectors. Firm-wide, Fletcher sits on the HOK Global Board of Directors and the Management Board.

Under Fletcher's tenure, HOK Los Angeles is designing projects for clients such as Sony Pictures and Television, Brookfield, Air Lease Corporation and Longfellow Real Estate Partners along with numerous other confidential life science, media and tech clients. The practice has also delivered in other sectors including the MRT Behavioral Health Center, USC's first LEED Platinum building (The Ginsburg Human-Centered Computation Hall), and the City of Hope Orange County at Five Point Gateway Hospital.

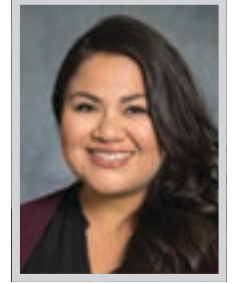


BARBARA GADBOIS

Partner
Gibbs Giden Locher Turner Senet & Wittbrodt

Barbara R. Gadbois is a senior partner at the Gibbs Giden law firm, with over 35 years of experience in public and private construction law. She concentrates her practice in the development and management of construction projects, including drafting and negotiation of bid and contract documents, procurement issues, public works, competitive bidding requirements, bid protest issues, pre-qualification, project delivery methods, design-build projects, risk allocation in contracts, claims avoidance and project closeout.

Gadbois represents municipal clients, private developers and general contractors in all aspects of major multi-million dollar projects. Her clients value her experience, insight and practical advice, in design and construction contract negotiation, administration and dispute resolution. Over the past year, her practice focused on transactional and project administration matters for residential development, hospitals, and school construction as well as dispute resolution in the hospitality sector.



VIENNA GONZALES

Project Manager
PCL Construction

Vienna Gonzales is project manager for the construction of Sankofa Park, the centerpiece of the 1.3-mile outdoor cultural museum, Destination Crenshaw. Celebrating the history and culture of Black Los Angeles, Destination Crenshaw will stand as a cultural hub for years to come and a beautiful visual from LA Metro's K Line.

Sankofa Park is a unique project with a goal to leverage construction spending to invest in the economic development of the local community. Gonzales and the project team executes on ambitious local hire goals that aim to remove barriers and create equitable access to high-paying construction careers, contracts certified firms and supports the local community through outreach and engagement. The Destination Crenshaw project stands as a shining example of an innovative approach to critical infrastructure development. Simply put, Gonzales' role is a unique one in which she is paving the way for a better future.

ON BEHALF OF THE ENTIRE TEAM AT TURNER CONSTRUCTION,

Congratulations
to Brittney Parkinson
and Jaimie Turner

on your well-deserved recognition as Women of Influence in our industry. Thank you for your commitment to Building the Future of Los Angeles and your leadership in advancing the construction industry.

Turner would also like to congratulate all of the Women of Influence in the A/E/C industry. Your vision, dedication, and leadership play a pivotal role in shaping the future.



BRITTNEY PARKINSON
Community & Citizenship Director

JAIMIE TURNER
Business Manager

WOI: CONSTRUCTION, ENGINEERING & ARCHITECTURE



KIRSTIN HARPER-SMITH

Project Executive
Shawmut Design and Construction

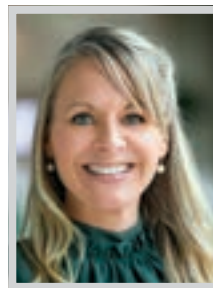
Kirstin Harper-Smith is building the skyline, community and future leaders of Los Angeles and its AEC community. Her resume spans sectors and project types, from a campus expansion for a leading tech company to ground-up apartment towers to the project credited with initiating the revitalization of DTLA—LA Live! Nokia Theatre (now Peacock Theater) and Plaza. Harper-Smith recently completed the \$24 million renovation transforming the historic Crest Theatre into the new UCLA Nimoy Theater, reviving a dormant building to create a community gathering place and restoring a valuable cultural asset in the Westwood neighborhood. Working with UCLA's Center for the Art of Performance, the team rehabilitated the building as a 299-seat, 10,500 square-foot venue while celebrating its legacy, carefully preserving and restoring the historic Art Deco-inspired marquee, light fixtures, decorative columns, wall-mounted interior decorative pylons, and 230-foot-long auditorium mural.



SARAH JACOBSON

President
Lamar Johnson Collaborative

As a founding member of the Lamar Johnson Collaborative (LJC), Sarah Jacobson was integral in growing the architectural design firm from a start-up of six people to nearly 40 in just a year and a half. When LJC was acquired by Clayco in 2019, she served as a core member of the transition team leading the merger between LJC's design practice with Clayco's existing design-build partner, BatesForum. LJC is now the full-service architecture and design arm of the Clayco enterprise with 350 professionals in five cities. Jacobson relocated to LA to establish and lead LJC's West Coast office in 2021. In an industry that counts only about 20% of its leadership as women, it was notable when she was named the first female president of LJC in 2022. Responsible for the overall leadership of the firm, Jacobson manages the delivery of design, staff development, revenue growth and profitability.



EMILY KAY

Vice President of Operations, California
Balfour Beatty

With more than 29 years of experience in the construction industry, Emily Kay serves as Balfour Beatty's vice president of operations where she builds on the company's commitment to meeting the expanding needs of clients and partners in high-growth markets throughout California. She has led teams in providing operational excellence in the delivery of county facilities as well as K-12 additions, modernizations and new construction projects for clients from Los Angeles, Torrance, Culver City, Redondo Beach, Santa Monica, Malibu, Manhattan Beach and Wiseburn USD and north through Oxnard USD. These efforts have successfully grown and enhanced community and educational facilities valued at more than \$1 billion. Kay has also spearheaded the expansion of Balfour Beatty's special projects operations in the Los Angeles area which encompasses a wide variety of market sectors including corporate tenant improvement, aviation, building repositioning, core and shell, entertainment, hospitality, medical and biotechnology.



BRANKA KNEZEVIC

Principal
Plana Architects

Branka Knezevic, an accomplished architect, stands as a beacon of inspiration in her field. Her career is marked by a fusion of architectural excellence and a commitment to social justice, setting her apart from her peers. Perhaps Knezevic's most notable accomplishment lies in her dedication to using architecture as a catalyst for social change. By focusing her practice on projects that address societal challenges, such as the Special Needs Network Center, she demonstrates a fusion of creativity and compassion. Her designs not only shape physical spaces but also contribute to the improvement of deeper social outcomes within the communities where these projects are situated. Beyond her architectural success, Knezevic extends her influence through education. As a LinkedIn Learning expert, she has empowered over 200,000 industry professionals with her knowledge. Her commitment to education showcases her desire to uplift others within her field, creating a ripple effect of positive change.

CONGRATULATIONS!

Perla Hernandez Lastra



S.L. Leonard & Associates would like to recognize our outstanding principal and senior project manager Perla Hernandez Lastra on being voted one of the 2024 Women of Influence in Construction, Engineering & Architecture. Perla has contributed immensely to the development of several high-level projects, to ensure the organizations she works with achieve more, serve more, and save more. Some of Perla's notable projects include:

California Community Foundation's 55,000 sf headquarters and conference center building, DTLA

Redtail Crossing by CCSM, 102-units of the first affordable housing in Westchester

Villa Esperanza campus expansion in Pasadena

Multiple LAUSD and OSHPD projects

Casa Pacifica Centers for Children and Families in Camarillo

Jordan Downs Plaza Regional Shopping Center

Gateways Hospital & Mental Health Center, 37 bed Adolescent Behavioral Health Unit, HCAI 5 in Echo Park

Great Wolf Lodge in Garden Grove

Terranea Resort in Los Angeles



(805) 445-4668 | www.sleonard.com

CO ARCHITECTS

www.coarchitects.com



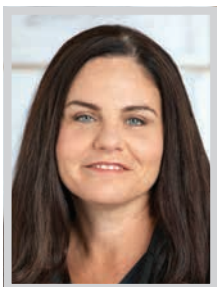
CONGRATULATIONS

Jenna Knudsen

On being named one of LABJ's Women of Influence: Construction, Engineering & Architecture.

CO Architects congratulates all of the Women of Influence nominees.

WOI: CONSTRUCTION, ENGINEERING & ARCHITECTURE

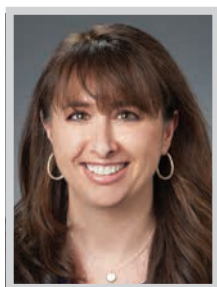


JENNA KNUDSEN

*Managing Principal
CO Architects*

In 24 years of practice, the past three as managing principal of 160-person firm CO Architects, Jennifer “Jenna” Knudsen has focused on engaging diverse perspectives and transforming architectural design and construction by elevating collaboration, resulting in improved outcomes. An early adopter and industry beta-tester of digital design and building tools, Knudsen has applied Building Information Modeling (BIM) in an integrated project environment to unify design vision and accelerate build-team productivity. Knudsen’s innovations accelerated widespread industry adoption of BIM, and she continually pushes for improvement in integrated processes, resulting in leading-edge benchmark projects that are recognized around the country.

As both architectural team leader and hands-on doer, Knudsen demonstrates to clients and design/construction teams the potential and successful application of highly sustainable project strategies. As a result, she is recognized in the profession as ground-breaker in collaborative project delivery.

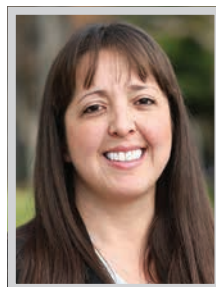


SARA KORNBLOTT

*Partner
Gibbs Giden Locher Turner Senet & Wittbrodt*

Sara H. Kornblatt is a partner whose practice is concentrated in both the development and management of construction projects as well as handling claims and complex litigation matters. She is skilled in drafting and negotiating bid and contract documents for owners, contractors and subcontractors, and handling bid protest and subcontractor substitution issues for both public entity owners and bidders.

Kornblatt represents clients in both litigation and arbitration, and has successfully advocated for her clients a number of times before the California Court of Appeal, including the published opinion *Lydig Construction, Inc. v. Martinez Steel Corporation*, which was a matter of first impression regarding writs of attachment. She has served as second chair trial counsel in two multi-million dollar construction disputes, representing a national construction firm and a public entity. Kornblatt’s unique experience in both contract drafting and litigation is an advantage for clients at all stages of a project.



PERLA HERNANDEZ LASTRA

*Principal; Senior Project Manager
S.L. Leonard & Associates, Inc.*

Perla Hernandez Lastra came to the USA from Mexico with her family when she was twelve and a half, not speaking any English. Her parents instilled a work ethic that helped her excel in school and earn her B.Sc. & M.ENG. engineering degrees from Cornell University. After being recruited by the largest general contractor in the country and rising to the position of project manager with projects such as the Marciano Art Foundation, Great Wolf Lodge, Terra-nea Resort and hospitals, schools and sports facilities, Hernandez Lastra joined project management firm S.L. Leonard & Associates in 2017 and in late 2022 was promoted to principal.

Hernandez Lastra manages teams of architects, engineers, consultants and contractors on behalf of owners such as California Community Foundation, Gateways Hospital, Casa Pacifica Centers for Children & Families, Villa Esperanza Services, Community Corporation of Santa Monica and Primestor (Jordan Downs Plaza).



KARIN LILJEGREN

*Founder + Principal
Omgivning Architecture + Interiors*

Karin Liljegen, FAIA, has dedicated her career to community building, sustainability and advocacy by embracing adaptive reuse as a powerful means to revitalize our cities. For over 24 years, Liljegen has focused on adaptive reuse projects and advocates for policy reform to make the repurposing of older buildings more financially viable and cornerstones of their communities.

For Liljegen, adaptive reuse represents the potential to solve four challenges: address the housing shortage, combat climate change, preserve cultural heritage and tackle the oversupply of vacant office buildings. She is engaged at a local and national level in leading real estate organizations and has led City of Los Angeles task forces on topics such as ordinance reform and adaptive reuse policy. She founded Omgivning Architecture + Interiors in 2009 and has built a reputation for uncovering potential in underutilized buildings by transforming them into multifamily housing, hotels, restaurants and workspace.



EMPOWERING WOMEN IN CONSTRUCTION

Congratulations to **Lia Tatevosian** for being named one of the Los Angeles Business Journal’s most influential women of 2024! We applaud her remarkable contributions as a dedicated leader in Southern California’s construction industry. In an industry where women constitute only 10% of the workforce, Swinerton wholeheartedly supports Lia’s mission to inspire and empower more women to break barriers and encourage them to join the construction field.



Lia Tatevosian - Senior Vice President and Regional Manager

WOI: CONSTRUCTION, ENGINEERING & ARCHITECTURE



YVONNE MARCHAND

Senior Project Manager
DPR Construction

Yvonne Marchand is a senior project manager at one of Los Angeles County's leading self-performing general contractors, DPR Construction. With more than 20 years of experience in construction operations on major projects, Marchand has a proven track record of successfully delivering significant hospitality, mixed use, life-science, education and luxury residential projects in both Southern California and South Florida.

Marchand's background in architecture coupled with strong field operations experience provides her with the foundation to facilitate clear communication, lead high-performing teams, and deliver a high-quality finished product. She achieves these results by seamlessly bridging the gap between design and construction and building an environment of trust and collaboration with the project team and key stakeholders. She has extensive experience with virtual design and construction, lean construction and LEED principles, utilizing these methods on her projects.



ARMINE MOVSESYAN

Principal; Studio Director
TCA Architects, Inc.

Over the past decade at TCA Architects, Armine Movsesyan has ascended from a junior designer to the esteemed position of studio director and principal. Throughout this transformative journey, she has accumulated extensive knowledge of both the company and the multifamily industry, specializing in affordable projects geared towards Veterans and formerly homeless individuals and their families.

Movsesyan derives satisfaction and humility from personally touring the final projects with the occupants, especially those who are in dire need and others who are experiencing positive life changes with a newfound sense of security under their roofs. One of her primary focuses involves staying abreast of newly released state bills aimed at promoting affordable housing development and construction. Movsesyan continually refines her insight into the specific needs and desires of tenants with each project. She dedicates herself to discerning what resonates for each unique property and what these diverse populations require to thrive.



HALEY NELSON

Associate Vice President; Senior Interior Designer;
National Interior Design Expertise Leader
HGA

Haley Nelson, IIDA, ASID, LEED AP, WELL AP is an associate vice president and senior interior designer in the Los Angeles office of HGA. With her expertise as a workplace designer and strategist, Nelson focuses on the cultivation of original insights that support the creation of places for people and organizations to thrive. Her experience includes a range of project types with solutions that explore the connection between the human experience and design, promoting future-facing solutions.

Nelson has focused her career on corporate interiors, feeling particularly drawn to this sector and the impact it can have. She has a passion for design that supports people and their well-being. Using materiality and craft, she always celebrates the story in her work and creates spaces that allow people to thrive. Haley joined HGA in 2019, which was expanding their West Coast presence with a new Public | Corporate Practice Group in LA.



LAUREN NIELSEN

Director of Business Development
GCX

In the past three years, Lauren Nielsen turned a successful summer internship into a full-time career in the construction industry. Now being the director of business development at GCX, Nielsen is dedicated to advancing not only her career and company, but the industry and the relationships she's built.

Nielsen has not only engaged with multi-million-dollar projects and clients but is seen as an ally and resource amongst her peers. Nielsen is constantly helping industry colleagues such as designers, brokers and developers, by answering construction questions and teaching them about the construction process so they can better educate their clients. She understands the connection between her role as a contractor and the information she can bring to the table. She is always prepared to identify a requirement from brokerage and is quick to provide critical data and bring her teams' knowledge and experience.

Balfour Beatty
f @ in t

EMILY KAY
VP, Operations

2024 Women of Influence

Your contributions to the construction industry in the Los Angeles community are inspiring.

CONGRATULATIONS ON AN OUTSTANDING ACHIEVEMENT!

CONGRATS JULIE TAYLOR HON. AIA

On being named one of LABJ's Outstanding Women in Construction, Engineering, & Architecture.

Taylor & Company, the PR agency for AEC, also commends our clients Jenna Knudsen of CO Architects, Courtenay Bauer of Verse Design, and Clara Tregallo of Relativity Architects. We wish them and all of the 2024 honorees a hearty congratulations.

TAYLOR & COMPANY
WWW.TAYLOR-PR.COM

WOI: CONSTRUCTION, ENGINEERING & ARCHITECTURE



BRITNEY PARKINSON
Community & Citizenship Director
Turner Construction Company

As community & citizenship director for Turner Construction Company's Southern California region, Brittney Parkinson is committed to making positive changes within the local construction industry and the communities in which the company builds.

Parkinson started her construction career as an integral member of the New York Business Unit, involved in various projects and roles since joining Turner in 2007. After years of leading an Employee Resource Group, she realized her passion for the impact Turner makes in the community. This prompted a transition to be a leader in the Corporate Social Responsibility space. Parkinson's commitment to community and educational outreach is rooted in the belief that service is an essential part of good corporate citizenship. After two years in the Community & Citizenship department, Parkinson was offered an opportunity to relocate to Turner's Southern California business unit.



RACHEL ROSENBERG
Associate Principal
Lamar Johnson Collaborative

Rachel Rosenberg is an associate principal and senior interior designer with Lamar Johnson Collaborative (LJC). She is a global, award-winning designer with multi-discipline, multi-market design experience. Throughout her career, Rosenberg has prioritized collective teamwork and success. She places a strong emphasis on acknowledging that the team is always stronger than the individual. Her leadership style revolves around ensuring there is a level playing field, where every team member's contribution is valued, regardless of level of experience. She creates an environment where mistakes are viewed as opportunities for growth and the collaborative journey is as rewarding as the end product.

Rosenberg believes mentorship and leadership of young talent in the industry contributes to the growth and development of the next generation of designers, and therefore the industry as a whole. Her commitment to mentorship extends beyond guiding new colleagues – she actively seeks inspiration and insights from emerging designers.



NATALIE RUIZ
Associate Principal, Luxury Multifamily Residential and Senior/Later Living
WATG and Wimberly Interiors

Natalie Ruiz is recognized as a leader in senior living design with roots in multi-family and urban, mixed-use projects. She has taken numerous projects from concept and entitlements through construction.

For example, Ruiz transformed an unsafe, unlicensed and structurally unsound 1966 structure, originally designed as a dormitory adjacent to UCLA, into a safe and licensed senior living community, now known as The Watermark at Westwood Village. By stripping the building down to its structure and recreating a state-of-the-art senior living community, the results establish a prominent landmark in the Westwood community that adds to the diversity of the community's demographic. Ruiz was responsible for leading and navigating the challenging entitlement and approvals process, and ensuring the design is thinking about the future of senior living, exploiting potential connections to the community in its urban setting, and placing emphasis on creating a sense of purpose and belonging for its residents.



MAGALY SANCHEZ
Project Manager
Howard Building Corporation

Magaly Sanchez has always been fascinated by construction. After dedicating herself to a lifelong career of working hard and constantly learning, Sanchez is now managing multi-million-dollar projects at Howard Building Corporation. Her resilience and dedication in a position mostly dominated by men is marked by her calm leadership, making her an asset to every project. In fact, she has been instrumental in the success of several recent projects by utilizing her proactive and inquisitive nature to navigate the current volatile market. This has led to an emphasis on item procurement and project tracking, which has ultimately resulted in minimized schedule impacts and cost-efficient solutions.

Sanchez's productive relationships with staff, subcontractors and clients have yielded impressive results, and her attention to detail and practical nature have made her an asset in projects such as Pluto TV, Syska Hennessy Group, CoreTrust, American Legion and Nossaman LLP, to name a few.



BEYOND THESE WALLS...

To do more than build. To **create**. To **innovate**. And to do it with a holistic, intelligent balance of **art and science** that's unmatched anywhere.

We see our work through the **eyes of the people** who will use them every day. Through their eyes, we see places of entertainment, education, innovation, technology, healing and research.

The result? Powerful structures with impacts that reach far beyond these walls.

CLAYCO

THE ART & SCIENCE OF BUILDING

claycorp.com



WOI: CONSTRUCTION, ENGINEERING & ARCHITECTURE

**AMY SIMS**

Founder
Helmerson Sims

Amy Sims, founder of Helmerson Sims, a prefab design and consulting firm, is a pioneer in prefab housing design and construction. She has ushered in new standards of building efficiency and sustainability through her innovative work at the intersection of architecture and manufacturing with Plant Prefab.

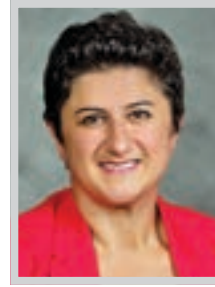
In launching Helmerson Sims, she aims to assist clients determine the best prefabrication method, the right factory, and the most efficient design solution for their project goals, leveraging experience from over 60 modular and factory-built housing projects. The goal is helping developers, architects and builders access modular and other innovative methods of construction to execute successful projects. With clear communication, high quality standards, innovative ideas, and deep problem-solving expertise she helps clients maintain responsible budgeting, critical path scheduling, team accountability, and optimal project outcomes. Sims helps advance industry adoption of prefabrication techniques through education and outreach.

**PAULA STAMP**

Vice President, Economic Development
Clayco

Paula Stamp, PhD, MBA, FSMPS, CPSM, is professionally unique and accomplished in the construction industry. Her informed perspective was crucial in developing and implementing educational curriculum for sales and operations teams to effectively impact revenue generation—her educational background playing a major role in the process.

In a career that has seen such accomplishments as securing over \$6.5 billion in new work procurement, Stamp has worn many hats. She's worked as the primary lead for Los Angeles World Airports pursuits—including the LAX West Gates at Tom Bradley International Terminal (\$1.4 billion), and the Consolidated Car Rental Facility (\$1.1 billion). She has worked on myriad higher education projects for clients such as UCLA, Cal State Dominguez Hills, UC Riverside, UC Irvine, Glendale Community College District, Cal State Fullerton, Pitzer College and Claremont McKenna College to name a few.

**LIA TATEVOSIAN**

Senior Vice President and Regional Manager
Swinerton

In January 2024, Swinerton announced the appointment of Lia Tatevosian as Swinerton's senior vice president and regional manager to lead Swinerton's Southern California and Hawaii operations. Tatevosian brings three decades of industry experience, including 27 years with Swinerton, to her new role. Since beginning as a project engineer, Tatevosian has held various positions with the company. In 2019, she became vice president and division manager of the Orange County and Los Angeles Special Projects Division. In her tenure, Tatevosian has overseen \$1 billion in projects, including indelible achievements such as the LAX Gateway, the UCLA Broad Art Center, and NASA's first LEED Gold building—the Jet Propulsion Laboratory Flight Projects Center.

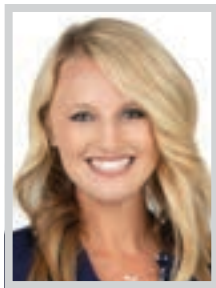
During her three-decade career, Tatevosian's total commitment and dedication to developing the best people, creating a thriving culture and establishing a strategic vision for the future has been her mission as a leader at Swinerton.

**JULIE D. TAYLOR**

Principal
Taylor & Company

For the past 35 years, the mission of Los Angeles "design evangelist" Julie D. Taylor, Hon. AIA, has been to educate the public about the benefits and importance of professional design and architecture. For 30 of those years, she has led the successful public relations and communications agency Taylor & Company, which she founded during the early 1990s recession. Taylor built the firm based on her background as a design writer, magazine editor, and director of public relations at the iconic Pacific Design Center in West Hollywood, bridging the gap between design professionals and the media.

Taylor & Company represents organizations engaged in ways to help people live, work, heal and learn in healthy and responsible buildings, interiors, cities and landscapes. Mindful of Los Angeles' severe homelessness crisis, the firm has dedicated much of its talents toward promoting quality affordable and permanent supportive housing.

**SILVIA THEMUDO**

Commercial Core Market Leader
DPR Construction

Silvia Themudo is an accomplished business development professional and currently serves as Southern California commercial core market leader at DPR Construction, a self-performing general contractor and construction manager specializing in technically complex and sustainable projects. Since joining DPR in 2020 to support the Southern California business unit, she has played a significant role in its growth. In her role, she oversees the commercial business through relationship building, pursuit leadership and active participation in core market operations.

Bringing over 15 years of experience in the AEC industry, Themudo collaborates within a team to support higher education, healthcare, commercial, advanced technology and life science projects throughout Los Angeles, Ventura, Orange and Riverside counties. Themudo plays a key role in executing the Get Work strategy, achieving a sales volume of more than \$1 billion in 2022 and 2023. Major accounts she has contributed to include Hackman Capital and Lincoln Property Company.

**CLARA TRESGALLO**

Director of Special Projects
Relativity Architects

Clara Tresgallo grew up in Puerto Rico, where she worked at her family's construction company, surrounded by contractors and engineers. Watching and learning about design and buildings early on, she took an interest in architecture and design as she witnessed the effect that well designed spaces can have on people. She later joined The Design Partnership, designing hospitals and clinics.

As director of special projects at downtown Los Angeles firm Relativity Architects, Tresgallo has dedicated much of her focus to increasing accessibility and inclusion for a variety of projects throughout the US and abroad. From affordable housing and studios to hotels and timeshare properties, Tresgallo provides oversight and design leadership on a variety of typologies. Working in Los Angeles but serving clients all over the US, Tresgallo is forging a significant mark on contemporary architecture with her attention to space, light and natural materials.

**JAIMIE TURNER**

Business Manager
Turner Construction Company

Jaimie Turner is currently the business manager for Turner Construction Company's Southern California region. She provides operational leadership, business management and a strategic plan for sustained long-term growth throughout the Southern California region. Combining her prior experience in project management and engineering, Turner understands the importance of the carefully executed plans for complex projects.

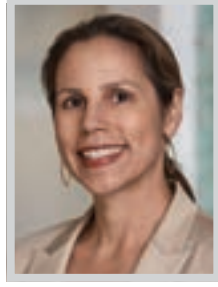
Less than a year after taking the position of Turner SPD division manager, Turner helped triple sales in the region, while also using her knowledge of the local market to help Turner's Southern California office win an \$80 million ground-up higher education project in downtown Los Angeles. Under her leadership, Turner SPD delivered 20 highly successful projects in just four years. Promoted to business manager in 2023, Turner uses her management and organizational skills to deliver high-quality projects to clients. Her proactive approach has earned her an excellent reputation with owners and design firms.



LUCY VILLANUEVA
Vice President, Healthcare
Clayco

Lucy Villanueva joined Clayco as vice president of healthcare for California in June 2023. Her career in construction spans 26 years. Villanueva has successfully overseen numerous large-scale healthcare projects throughout California, representing billions of dollars and millions of square feet in development. Her ability to deliver world-class work has been evident in her track record of completing major, high-quality healthcare projects that significantly impact communities in Southern California.

Villanueva served as project executive for Kaiser Permanente’s San Marcos Medical Center, which was completed under budget and ahead of schedule in a mere 27 months – five months ahead of the scheduled 32 months – despite a world pandemic, supply chain issues, labor shortages and inclement weather. The project represents 433,233 square feet of hospital space and a 25,700 square foot central utility plant. Thanks to Lucy’s leadership, the medical center was able to begin serving patients within five months of completion.



SERENA WINNER
Studio Director; Senior Project Manager; Principal
Gensler

As a studio director of the Gensler Los Angeles commercial office building studio, Serena Winner oversees a diverse range of projects. She is passionate about space, space-making and having a positive impact. She has overseen the design and construction of many prominent buildings in Southern California, including the Hyundai Corporate Headquarters in Fountain Valley, and several prominent office buildings in Culver City and West Los Angeles. She also led the team converting the Westside Pavilion Shopping Center to a single tenant office space for a prominent technology company.

From creating spaces for traditional office users, to technology companies, to entertainment companies, to creating life science lab and office spaces, Winner’s contributions have helped shape much of the working environment experienced by people in Southern California. As a project manager with over 25 years of experience, Winner plays a central role, leading responsibility for the day-to-day administration of projects.

CONGRATULATIONS TO
THE LOS ANGELES BUSINESS JOURNAL’S
2024
WOMEN OF INFLUENCE:
CONSTRUCTION,
ENGINEERING
& ARCHITECTURE

REGISTER TODAY!



LOS ANGELES BUSINESS JOURNAL
**COMMERCIAL
REAL ESTATE
AWARDS**
2024

The Los Angeles Business Journal is proud to announce the 29th annual **Commercial Real Estate Awards.**

This event will honor the brokers of the most notable transactions in Los Angeles and recognize the most impactful projects completed within the last 12 months. In addition, each award-winning project’s **developer, architect and general contractor** will be honored.

AWARDS PROGRAM

WEDNESDAY, FEB. 28

InterContinental Los Angeles Downtown
6:00 - 8:30PM PST

To register, please visit labusinessjournal.com/events/creawards2024

PLATINUM SPONSORS



GOLD SPONSOR

