

THRIVING IN THEIR

40s

LA's Leaders of Influence

A SKILLED BUSINESS PROFESSIONAL – BE IT AN ACCOUNTANT, ATTORNEY, BANKER, REAL ESTATE EXPERT, insurance professional or some other form of trusted advisor – can be one of the key ingredients for any company's success. Working with an expert who possesses the right skill set can actually help set growth in motion for businesses in virtually any industry.

Demand for such expertise can be competitive. Fortunately, Los Angeles is home to a growing group of such established experts – and the numbers of young people training to become such professionals are up. In our region there is no shortage of excellent advisors, many of whom happen to be in their 40s.

Listed alphabetically in this section, you'll find a selection of Los Angeles' leading professionals in their 40s, along with some insights about their careers, attributes and accomplishments.

Methodology: The professionals featured in these pages did not pay to be included. Their profiles were drawn from nomination materials submitted to the Los Angeles Business Journal. Those selected for inclusion were reviewed by the editorial department and chosen based on a demonstration of impact made on the profession and on the Los Angeles community.

LOI: THRIVING IN THEIR 40s

**JENI ABRAMSON***Business Broker & President*

Transworld Business Advisors of Beverly Hills

After over 15 years in enterprise sales and commercial real estate, Jeni Abramson recognized that Los Angeles has been historically under-served by business brokers, which has caused many businesses to shutter without finding a buyer. She decided to change that reality and dedicate her career to helping small business owners in LA get the most for selling the businesses they've nurtured for years. In 2021, Abramson launched the Los Angeles office of Transworld Business Advisors in Beverly Hills and brought the world's largest and most dynamic business brokerage brand into the LA market.

Abramson holds an MBA from Columbia University and an MA in Investor Relations from the University of San Francisco. Her business brokerage team has worked with dozens of LA small business owners on exit planning, franchising and business sales.

**RYAN ADAMS***President & Chief Operations Officer*

GeoLinks

Ryan Adams is the president and chief operations officer of GeoLinks, a leading enterprise-level telecommunications company. He oversees major projects and the daily operations, working directly with the executive leadership team and department managers. Under his leadership, GeoLinks has become one of the fastest growing internet and voice providers in America. His leadership and inherent ability to both establish and cultivate long-lasting rapport, both within the company and with outside partners, has also been instrumental in GeoLinks becoming a nationally recognized leader in network construction, service quality, product innovation and closing the US digital divide.

Adams began his career in public affairs at the age of 18, quickly rising to become the director of operations for two global manufacturing and distribution companies. Despite the success he found in those positions, Adams sought out an opportunity to help build a company from the ground up.

**BLAKE ALSBROOK***Partner*

Ervin Cohen & Jessup LLP

Ervin Cohen & Jessup's Blake Alsbrook is currently acting as the court appointed receiver in 19 matters pending before the Los Angeles Superior Court, Orange County Superior Court, San Bernardino Superior Court, San Francisco Superior Court, and United States District Court for the Central District of California. For example, he recently acted as court appointed receiver for over \$250 million in real estate empire in contentious Orange County divorce action and acted as lead counsel in the largest cannabis receivership in California history. He also acted as court appointed receiver over \$20 million of retail and multifamily real property in West Los Angeles in a contested foreclosure proceeding brought by a secured lender.

Alsbrook has also acted as receiver in numerous cases on behalf of cities throughout Southern California over "problem properties" where remediation, demolition and correction of municipal and Health & Safety Code violations are needed.

**MARIBETH ANNAGHEY***Founding Partner*

Annaghey McCann LLP

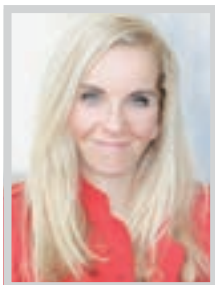
After moving up the ranks in private law firms, Maribeth Annaghey was elevated to name partner at trial firm Browne George Ross Annaghey O'Brien & Ellis LLP (now known as Ellis George Cipollone O'Brien LLP) in 2020 – just shy of her 42nd birthday. During her tenure there, the law firm grew to a bi-national midsize law firm. Although her former firm's growth was exciting, Annaghey decided it was time to branch out with longtime friend and law partner Kathryn McCann to start their own boutique firm, Annaghey McCann LLP, a woman and minority-owned law firm.

Although there are many wins through the life of a case and throughout her career, Annaghey has been able to leverage her trial and litigation experience to find resolutions before clients are forced to endure the cost, disruption to business, public scrutiny and risk of trial.

**SANTIAGO ARANA***Principal*
The Agency

Ranked the #6 real estate agent in the country, Santiago Arana has closed billions of dollars of real estate across Los Angeles, taking his place among the most distinguished professionals in the industry. Arana joined The Agency in 2014 as principal and partner, specializing in high-end residential real estate and new construction across the region's most coveted neighborhoods. Arana spearheaded the company's Westside expansion as managing partner of the Brentwood and Pacific Palisades offices. To date, he has closed over \$4.6 billion in real estate.

No stranger to representing high-profile clients such as Ben Affleck, Lady Gaga, LeBron James, Larry David, Rick Caruso, Tom Barrack, Anthony Hopkins, "Bond King" Jeffrey Gundlach and Alessandra Ambrosio, among others, Arana is artfully discreet and carefully tailors his marketing strategies to fit each individual property while protecting his clients' privacy.

**JO ARDALAN***Partner; Chair, Internet Law Practice Group*
One LLP

As a partner at One LLP, an intellectual property and entertainment law firm, Jo Ardalan chairs One LLP's Internet Law Practice Group, where she represents businesses, inventors and artists across many industries, from life sciences to rock bands to security innovators to photographers to film producers to AI visionaries to restaurateurs, in their copyright, trademark, trade secret, patent, defamation, right of publicity disputes and general business disputes.

In the courtroom, Ardalan recently successfully argued for the reversal of a \$1.4 million punitive damage award in a case involving the rights to a television series, first-chaired a trial for a breach of contract dispute and received a defense verdict despite being retained on the eve of trial, and won a defense verdict in a right of publicity trial, among many other winning summary judgment motions and seven-figure settlements in favor of her clients.

**L. ASHLEY AULL***Partner*

Munger, Tolles & Olson LLP

L. Ashley Aull is an experienced trial lawyer and former federal prosecutor in the Los Angeles office of Munger, Tolles & Olson.

A seasoned trial and appellate attorney, Aull litigates business-critical and crisis cases, including commercial and intellectual property disputes. She has led numerous trials, arbitrations, or other high-stakes evidentiary hearings, and has argued 45 cases at the Ninth Circuit Court of Appeals. She is also a proven leader and strategist, guiding teams through complex, high-pressure litigation—and previously served as the chief of a section of the US Attorney's Office for the Central District of California. Having served as a federal prosecutor for nearly a decade, she also counsels clients through government investigations and defends those charged with white-collar crimes. She recently achieved a complete defense victory for a Fortune 100 technology company as co-lead trial counsel in an over \$1 billion arbitration involving contract and accounting disputes.

**SERINEH BAGHDASARIAN***Partner*

Sklar Kirsh LLP

Serineh Baghdasarian is a partner at Sklar Kirsh LLP in the Real Estate Department. Her practice experience includes extensive representation of real estate private equity funds, developers, and institutional and non-institutional investors in all areas of transactional real estate and real estate finance, including: construction, permanent, securitized and mezzanine financing; the acquisition and disposition of vacant land, office buildings, apartment complexes and other commercial, residential and mixed-use properties; the formation and representation of limited liability companies, general partnerships and other joint ventures; the syndication of real estate investments; and the representation of commercial tenants and landlords in commercial transactions.

Baghdasarian also has an entrepreneurial background. Prior to joining Sklar Kirsh, Baghdasarian was an associate in the Real Estate Practice Group of Gibson, Dunn & Crutcher, LLP, where she represented real estate private equity funds, lenders and other institutional clients in cutting-edge real estate and real estate finance transactions.

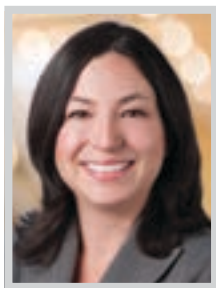
Congratulations



**SELENA GALAVIZ
BRANDON MARSH**

Leaders of Influence: Thriving in Their 40s
—Los Angeles Business Journal

LOI: THRIVING IN THEIR 40s

**SEDINA L. BANKS**

Partner, Environmental Group
Greenberg Glusker LLP

As partner in the Environmental Group at California's largest single-office law firm, Greenberg Glusker, Sedina Banks serves as a trailblazer for the legal community and broader Los Angeles community. Over the course of her two decades of practice, Banks has counseled and represented a broad array of clients including property owners, municipalities and companies in a wide range of environmental compliance and litigation matters. Her work regularly involves state and federal agencies and regulations including the United States Environmental Protection Agency, the California Regional Water Quality Control Boards, California air districts, the California Department of Toxic Substances Control, the California UST Fund, the Federal Trade Commission, and the Food and Drug Administration.

Banks has also been helping companies understand and comply with consumer product and labeling matters, including writing on the new requirements pertaining to per- and polyfluoroalkyl substances, known as PFAS or "forever chemicals," in their products.

**BURÇIN BECERIK-GERBER**

Department Chair, Civil and Environmental Engineering; Dean's Professor, Civil and Environmental Engineering
University of Southern California

A highly accomplished researcher, educator and advocate for student success, Burçin Becerik-Gerber has made significant contributions to engineering and engineering education. She is currently professor and chair of the Astani Department of Civil and Environmental Engineering at the University of Southern California and the founding director of the Innovation in Integrated Informatics LAB and the Center for Intelligent Environments (CENTIENTS).

Becerik-Gerber's research focuses on the intersection of technology and the built environment, with particular emphasis on the use of sensing and data analytics to improve the performance and sustainability of buildings and infrastructure, not only from an engineering perspective but also from a user point of view. She has pioneered Human-Building Interaction (HBI), an emerging field that examines how people interact with the built environment. Becerik-Gerber's work has been widely recognized for its innovative approach and impact on the field.

**ANN MARIE BEDTKE**

Executive Director
Griffith Observatory Foundation

As the executive director of the Griffith Observatory Foundation, the exclusive non-profit development partner for the iconic Griffith Observatory, Ann Marie Bedtke is highly regarded for her unwavering commitment and bold leadership. In partnership with Griffith Observatory and the City of Los Angeles, Recreation and Parks Department, Bedtke ensures the Foundation supports and promotes the Observatory as an unparalleled destination that provides free public access to inspire curiosity and science literacy through one-of-a-kind astronomical experiences for generations to come.

Bedtke always looks for ways to innovate and create opportunities to bring Griffith Observatory's mission to life. Her recent achievements include the development of a strategic plan for the Observatory and Foundation through when the Olympics will be hosted in Los Angeles in 2028 and a collaboration between Hollywood animators, visual effects professionals and tech organizations to produce and launch the new "Signs of Life" Planetarium experience.

**KOREN (KORI) BELL**

Partner, Litigation; Member, White-Collar Defense, Strategic Motions & Appeals, Investigations & Enforcement Practices
Willkie Farr & Gallagher LLP

Koren (Kori) Bell is a partner in Willkie's Litigation Department, where she is a member of the White-Collar Defense, Strategic Motions & Appeals, and Investigations & Enforcement Practices. A nationally recognized litigator and former federal public defender, Bell's diverse practice focuses on high-stakes trials (including last-minute trials), white-collar criminal defense, complex commercial litigation, government and internal investigations, and regulatory enforcement matters.

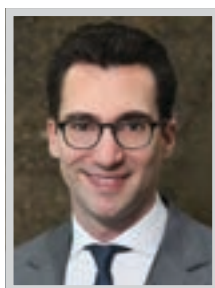
Bell has been lead counsel in some of the nation's most complex and highly-publicized trials and appeals—including in a case she argued before the US Supreme Court. She has handled high-stakes matters for prominent individuals, public entities, and private companies across a range of industries—from entertainment to finance, technology, pharmaceutical and sports. Her successful representations span cross-border business disputes to crisis management and all manner of criminal matters.

**WARREN BLEEKER**

Partner
Lewis Roca

Warren Bleeker, a partner in Lewis Roca's Intellectual Property Practice Group, has amassed a highly successful career marked by his exceptional expertise in resolving complex intellectual property (IP) disputes.

Perhaps Bleeker's most notable attribute is his ability to tailor strategies to fit the unique aspects of each IP case, be it design and utility patents, copyrights, trademarks, trade secrets, or unfair competition claims. His versatility extends to employing various approaches, including litigation in federal and state courts, cancellation and opposition proceedings before the Trademark Trial and Appeal Board, and assistance in patent reexamination proceedings. This adaptability demonstrates his deep understanding of IP matters and his commitment to delivering results aligned with his clients' specific needs. Bleeker's experience extends beyond strategy formulation. He possesses trial experience and has argued before the US Court of Appeals for the Ninth Circuit.

**ELAN BLOCH**

Partner
Sklar Kirsh LLP

Partner at Sklar Kirsh, Elan Bloch's recent representative matters include recently obtaining the full dismissal of an action brought in Federal Court against a water cooler products seller by its competitor for Lanham Act claims, including false advertising, violation of unfair competition law and breach of contract. Bloch also represented a client against a former board of directors advisor in prosecuting claims for intentional interference with prospective economic advantage, diversion of corporate opportunities and unfair business practices, involving complex issues of international law, resulting in a favorable client settlement.

Bloch also represented a founder and owner of a nightclub against his institutional partner, resulting in an advantageous buy-out that restored full ownership to the client. He also obtained dismissal of an action brought against a national franchisor by a franchisee association, resulting in the validation of numerous business practices and preventing future litigation by successfully challenging associational standing.

**MERRELL BOTELLO**

Employee Benefits Consultant
Burnham Benefits Insurance Services, LLC

Merrell Botello's career has taken her from her humble beginnings as an HR professional at a local waterpark to the position of a renowned "Benefits Consultant Butterfly" who crafts out-of-the-box benefits programs for clients. Always positive, resourceful, present, creative and a connector at heart, Botello is dedicated to advocating for clients, employees, colleagues and peers in the best possible way.

At Burnham Benefits, Botello shines as part of a team that provides consultancy services focused on a personalized, proactive and thoughtful approach. With Botello at the helm, clients can rest assured of the highest standards in terms of benefits programs, experience, empathy, and innovative solutions that put their health, family, and finances first. Botello's active engagement with industry associations and community nonprofits also reflects her outstanding leadership, empathy, and contributions to the community beyond her day-to-day work.

**LIZ BUDD**

Senior Vice President, Influencer Marketing
Edelman

Liz Budd is a senior vice president on Edelman's Influence team based out of the Los Angeles office. Budd started at Edelman in 2013 on the digital team and now oversees the Consumer Packaged Goods, Retail, and Financial Services Influence teams. She leads multiple high-performing teams in integrated influencer programs for clients, across all tiers of talent, from micro-influencers to top-tier creators and celebrities. By leveraging key cultural drivers to help deliver strategy and achieve established goals, Budd has helped build successful influencer programs for large global clients including PayPal, Del Monte, Microsoft, Xbox, Adobe, HP and many more.

Budd currently oversees more than \$10 million worth of business and serves on Edelman Southern California's senior leadership team (SLT). As a member of SLT, Budd plays a key role in shaping an inclusive and professionally rewarding workplace for over 200 team members.

LEADERS OF INFLUENCE: THRIVING IN THEIR 40s



CONGRATULATIONS MICHAEL NOURMAND

FOR RECOGNITION IN LA BUSINESS JOURNAL'S 2023
LEADERS OF INFLUENCE: THRIVING IN THEIR 40s

**Nourmand
& Associates**

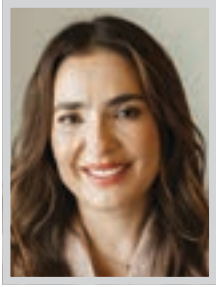
BEVERLY HILLS
Howard Lorey | VP/Manager
office line: 310.274.4000
421 N Beverly Dr. Suite 200

BRENTWOOD
Gavin Fleminger | Manager
office line: 310.300.3333
11999 San Vicente Blvd Ste 100

HOLLYWOOD
Kimberly Turner | Manager
office line: 323.462.6262
6525 Sunset Blvd Suite G2



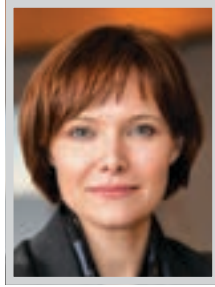
LOI: THRIVING IN THEIR 40s

**NORAYMA CABOT**

Chief Executive Officer
A Place Called Home

Norayma Cabot has over 18 years of experience leading successful organizations with expertise in spearheading strategic initiatives, driving organizational growth, working with vulnerable communities, and diversifying funding sources. In her first year as CEO, Cabot elevated APCH's business operations, eliminating an operating deficit and maximizing programmatic success. The organization, which annually serves more than 700 of Los Angeles' most at-risk youth and their families with state-of-the-art programs in the arts, mental health counseling, food insecurity, career pathways, college scholarships, and more, is now poised to launch a long-desired Technology Transformation program that will bring new educational opportunities to South Central youth and substantially increase the agency's technological capacity.

Prior to APCH, Cabot was one of a handful of non-attorney executive directors of a legal services organization, leading the Los Angeles Center for Law and Justice through the pandemic resulting in a more financially robust and innovative organization.

**CLAIRE CASTLES**

Partner
Jones Day

Claire Castles has developed her legal career and business experience to become one of the top health care lawyers in Los Angeles and a rising star in the health care legal industry. Castles' practice focuses on helping clients navigate the complex health care and life science regulatory compliance industry. She frequently assists on international matters with significant regulatory enforcement issues and potential reputational concerns for clients. Castles frequently serves as lead regulatory counsel when acquisitions or litigation trigger consideration of complex regulatory licensing and payment strategies that impact operations.

Castles' longstanding experience and understanding of the variety of complex regulatory compliance, reimbursement and licensure issues facing clients has helped to make Jones Day a "go-to" law firm for California health care providers and life sciences companies. She is known as a lawyer's lawyer with command and understanding of the health care regulatory landscape.

**ALEX CHAN**

Partner
Devlin Law Firm/DataNovo

Alex Chan leads patent owners to maximize their chances inside and outside the courtroom. Inside the courtroom, Alex Chan's most successful career accomplishments focus on individual startups and inventors who have limited financial means to protect their intellectual property against patent infringers. As a plaintiff's lawyer, Chan gave small IP owners a voice to protect and enforce intellectual property licensing in a legal sector where financial resources often dictate success. In the past year, Chan has litigated two dozens of cases in the Central District of California and more than 40 across the country.

Outside the courtroom, Chan founded a legal analytics company called DataNovo, a company named as the "one to watch" by the Financial Times and awarded with several legal technology accolades. With DataNovo, Chan uses AI, machine learning, and neural network to automate patent landscape analysis, prior art searching, and invalidity contentions preparation.

**SIMON CLOSE**

President, Community Supports
24 Hour Home Care

Simon Close serves as president of 24 Hour Home Care's Community Supports Division, which prioritizes care for underserved Los Angeles communities by providing access to in-home care for Medicaid subscribers and other low-income people. Close joined the team in 2020 as vice president of sales, bringing with him more than 20 years of experience in the pharmaceutical and life sciences industries across three continents.

Transitioning to the home care sector, an entirely new field for him, presented unprecedented challenges, but Close's resilience and adaptability shone through. He not only navigated the intricacies of the industry but also led his team through the COVID-19 pandemic, ensuring the continued provision of essential in-home care services to vulnerable populations. Close is motivated, in part, by his personal connection to 24 Hour Home Care's mission: to impact people's lives by making a difference every day.

**LARA COMPTON**

Member
Mintz

Mintz member Lara Compton is a trusted advisor to clients ranging from traditional health care providers to disrupter digital health platforms as they navigate the practical and regulatory challenges in health care. Her unique depth of knowledge across HIPAA privacy and other regulatory issues governing the use of data, state and federal fraud and abuse laws, business planning and operational issues has led colleagues to describe Lara as the "Swiss Army knife" of health care problem-solving.

As a successful health care attorney, Compton has recently worked on some noteworthy matters including serving as the lead health care regulatory counsel to Fulgent Genetics, Inc., a technology-based genetic testing company focused on transforming patient care in oncology, infectious and rare diseases, and reproductive health, in its \$170 million acquisition of Inform Diagnostics and a portfolio company of Avista Capital Partners. Compton led the healthcare regulatory due diligence team for the deal.

**HATEM DHIAB**

Founding and Managing Partner
Gerber Kawasaki Wealth
and Investments Management

Hatem Dhiab's clients are mostly accomplished executives, professionals, and entrepreneurs. They require modern, unbiased, independent financial advice aligned with their goals and tolerance for risk. Dhiab's strength lies in working closely with them to develop customized investment strategies that meet their evolving needs. He then aligns those investment strategies within the broader wealth management architecture while constantly identifying new opportunities.

Dhiab is often a guest on major TV networks discussing financial trends and his views on media, technology and innovation. He founded the popular Gerber Kawasaki podcast Future Money and is deeply involved in the Los Angeles Technology and start-up scene. He's also a member of the Entrepreneurs Organization Los Angeles chapter. Within Gerber Kawasaki, Dhiab leads both the Technology, High Net Worth, and International groups where he works with ex-pats and foreign nationals on cross-border planning, international investments, and complex strategies.

**RITA DIAZ**

Partner
Hahn & Hahn LLP

Rita Diaz is a member of Hahn & Hahn's litigation, employment and trust and estates practice groups. She has significant experience handling contentious trust and estates litigation, as well as advising trustees and beneficiaries through trust administration issues. She is also skilled at advising companies on employment matters, including discrimination, leaves of absence, and wage and hour issues, and reviewing and drafting employee handbooks.

Diaz's recent matters have included trust administrations; preparing estate plans (both new and updated) for numerous families; assisting trustees with administration of trusts, including trusts with difficult beneficiaries and complex assets such as business interests, valuable artwork, firearms, and high-end vehicles; assisting executors with probate administrations; preparing and successfully prosecuted objections to an overreaching trustee's accounting; and many other challenging processes on behalf of clients. Diaz also makes a point to invest her time and energy to give back to her communities.

**NATHAN DICK**

Assurance Principal and Market Leader, Los Angeles
BDO USA P.C.

Nathan Dick's expertise in managing complex client portfolios, leading the team amid a global pandemic and providing mentorship to professionals across the firm solidified his reputation and set the standard for local audit and assurance leaders. Dick's entrepreneurial spirit initially drew him to the assurance and audit profession 18 years ago. Starting his career at BDO as an intern, his curiosity motivated him to dive headfirst into the firm's breadth of services and complexities behind each unique sector. Since then, Dick has remained committed to the advancement of LA's accounting industry, setting the bar high for assurance expertise, strategic consulting and company culture.

Dick's remarkable journey from an intern to a market leader is a testament to his operational acumen and ability to develop a thriving practice. His leadership played a key role in the firm's ability to grow its local market share during the pandemic.



THE AGENCY CONGRATULATES

Gina Michelle

FOR BEING AWARDED ONE OF
LABJ'S LEADERS OF INFLUENCE:
THRIVING IN THEIR 40S

WE'LL LET HER NUMBERS DO THE TALKING

Over \$1 Billion in Career Sales

18 Years of Experience

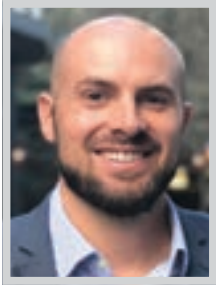
\$185 Million in YTD Sales Volume

Named Top 1% in The Nation by Real Trends 5 Years in a Row

GINA MICHELLE | DIRECTOR, ESTATES DIVISION

GINA.MICHELLE@THEAGENCYRE.COM | 818.850.1458 | LIC. #01503003

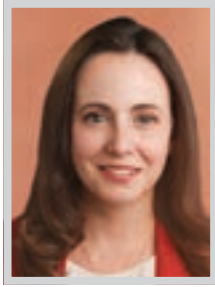
LOI: THRIVING IN THEIR 40s

**TYRONE DINNEEN**

Financial Advisor
Northwestern Mutual

Tyrone Dinneen's mission is to provide professionals, families and business owners with goal-based, wealth-building financial plans that will stand the test of time. By aligning knowledge of employer benefits with strategies around tax efficiency, wealth building, and wealth preservation, Dinneen and his team create the ultimate value for their clients.

When Dinneen joined Northwestern Mutual, his goal was to continue helping professionals working in the non-profit space who typically lack access to financial planning. As time progressed, Dinneen expanded his client base to begin working with business owners and tech professionals. Not only does Dinneen serve clients, but he also serves as a formal mentor and leader for new advisors joining the firm. Since the beginning of Dinneen's time at Northwestern Mutual, his practice has grown from a one-man team to a team of seven professionals who are uniquely placed to provide clients with the highest level of service.

**KATHRYN EDGERTON**

Member
Mintz

Mintz member Kathryn Edgerton is known for providing practical, business-focused guidance to health care providers and businesses who serve them, including hospitals, physician organizations, behavioral health providers, telemedicine providers, laboratories, home health providers, and medical spas. With a focus on addiction treatment and behavioral health, Kathryn has counseled over 100 addiction treatment providers on day-to-day health care operations.

In addition, Edgerton counsels clients on compliance with the Eliminating Kickbacks in Recovery Act of 2018, the federal Anti-Kickback Statute, the physician self-referral and payments law (Stark Law), California unfair competition law, and other health care regulatory laws and regulations. Edgerton applies her deep healthcare regulatory knowledge when representing clients in state and federal government investigations and in response to investigations by insurance companies.

**STUART EISLER**

Partner; E-Discovery Counsel
Hanson Bridgett LLP

Stuart Eisler has extensive experience representing award-winning heavy civil, industrial, commercial, and residential developers and general contractors in complex construction disputes. His expertise has been utilized in a wide range of bet-the-company matters that include contract issues, strict products liability, project delay and disruption, loss of use, deficient quality, redevelopment matters, LEED green building construction complications, personal injury, and negligent supervision claims.

Eisler successfully resolved a litigation matter short of trial for one of the top 10 contractors in the country on a design-build freeway project with a difference in the parties' position of nearly \$15 million. Eisler recovered a multi-million dollar settlement for his client. He has also successfully resolved litigation matters related to levees, data centers, distribution centers, industrial and chemical complexes, assisted living facilities, residential structures, high-end single family dwellings, mixed-use buildings, and sports and entertainment complexes.

**AARON ESTRADA**

Marketing Director
Horowitz Agency

Aaron Estrada is a senior team member at Horowitz Agency, a leading integrated marketing and public relations agency representing entertainment and corporate professional services firms and production companies. Estrada has been at the forefront of the agency's tremendous growth. He joined Horowitz in early 2019 after a decade-long stint orchestrating the marketing functions at the Los Angeles County Bar Association (LACBA), and has since seen the Horowitz Agency team double in size and expand its footprint to New York and, more recently, Vancouver, B.C.

As marketing director, Estrada partners with agency clients to develop and implement comprehensive marketing and PR strategies. He relies on his strong account and project management background to help professional services firms achieve their strategic marketing objectives. Central to his work is his role advising top national and regional firms in an effort to increase their bottom line.

**DEBORAH FESTA**

Partner
Akin

Arecognized leader in her field, Deborah Festa is a highly regarded corporate partner in Akin's Los Angeles office with deep experience at the critical nexus of investment management and institutional credit markets. With two decades of targeted experience, she spearheads the firm's global structured credit practice and is regularly called upon by leading institutional investment managers and global investment firms in highly complex finance transactions, particularly collateralized loan obligation (CLO) issuances, structured finance investments, warehouse financings and asset manager M&A transactions.

Despite the recent challenges impacting the CLO market, Festa's practice thrived, and she remained a stalwart for clients. Among her achievements has been her work for investment advisory company KKR Credit (US), LLC and its affiliates in over a billion dollars in issuance of CLO transactions, in which she led the negotiation of and drafting of disclosure and transaction documents as well as related warehouse financing arrangements.

**AMBER FINCH**

Partner
Reed Smith LLP

Amber Finch is partner at Reed Smith and is managing partner of the firm's Los Angeles office. Since joining the firm in 2011, Amber has quickly become a go-to lawyer for creating effective risk management solutions. With her litigation background, she has helped her commercial policyholder clients recover hundreds of millions of dollars in insurance proceeds.

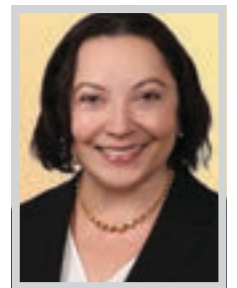
Finch's legal practice focuses on insurance recovery matters and she represents a litany of clients from start-up businesses to middle market and Fortune 500. She helps companies manage risk by negotiating broader insurance coverage on the front end, negotiating insurance and indemnity provisions in deal contracts, assisting with tender and collection on insurance and indemnity claims, and litigating insurance and indemnity disputes. She has significant experience in standard first party and third party insurance policies, as well as specialty policies, emerging industries and disruptive technologies.

**JONATHAN FITZGARRALD**

Managing Partner
Equinox Strategy Partners

Jonathan Fitzgarrald is a results-driven professional catalyst with a laser focus on unlocking the potential of undervalued individuals, propelling them towards unprecedented revenue growth, heightened market visibility and optimized practices. His unique approach has consistently led to remarkable outcomes, with many of the firms he advises experiencing substantial revenue increases, some up to 20 percent within the first year.

Drawing inspiration from the Moneyball strategy, Fitzgarrald employs a proprietary approach that involves identifying and coaching traditionally overlooked yet highly skilled professionals in legal, financial, accounting and professional services firms. As a fellow of the College of Law Practice Management, Fitzgarrald is deeply connected to the issues that resonate with professionals. His leadership programs cover a range of critical topics, including navigating cross-generational tensions, succession planning from the Next Gen's perspective, using culture for effective team management, optimizing partner compensation, and building emotional connections with clients.

**JEANNE FUGATE**

Partner
King & Spalding

Jeanne Fugate is a go-to partner on employee mobility issues, from drafting enforceable employment agreements, to advising clients on appropriate on-boarding and off-boarding practices, to litigating any disputes that may arise from the termination of an employer/employee relationship. In order to litigate employee mobility claims, lawyers are often called upon to respond quickly to demand letters and to immediately move to draft and/or defend against requests for TROs and preliminary injunctions.

Fugate's successes in these matters includes representing financial technology company Sidetrade as a defendant in a suit by competitor HighRadius, which sued two former employees and Sidetrade, their new employer, claiming those employees were violating their post-employment restrictive covenants. After weeks of litigation and discovery and a full evidentiary hearing, the court denied HighRadius' request for a temporary injunction, refused to enforce one employee's non-compete, and only required that the other employee's non-compete be enforced for five days.



ARASHKHORSANDI
INJURY LAWYERS



CONGRATULATIONS TO ARASH KHORSANDI

On being recognized by the Los Angeles Business Journal's "Leaders of Influence: Thriving in Their 40s"



CALIFORNIA'S POWERHOUSE INJURY LAW FIRM



Car Accidents



Uber/ Lyft
Accidents



Pedestrian
Accidents



Truck
Accidents



Motorcycle
Accidents



Dog bites



Bicycle
Accidents



Brain Injury
Accidents



Trip & falls



Catastrophic
Workers'
Compensation



Premise
Liability



Hit & Run
Accidents



(877) 702-7274

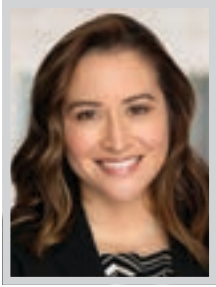


AKLAWYERS



WWW.ARASHLAW.COM

LOI: THRIVING IN THEIR 40s

**SELENA GALAVIZ**

Attorney
Hueston Hennigan LLP

Selena Galaviz concentrates her practice on all aspects of complex civil litigation, including environmental litigation, complex business disputes and class actions. Galaviz's current clients include Southern California Edison, the Navajo Nation, an aerospace manufacturer and a pharmaceutical company, to name a few.

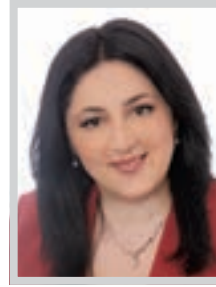
Galaviz is a key member of the team representing Southern California Edison and Edison International in litigation arising out of the 2017 Thomas Fire, the 2018 Woolsey Fire, and the and the 2018 Montecito mudslides. She works on dispositive motions, preparing and responding to discovery, and discovery disputes. Galaviz has also evaluated plaintiffs' claims and worked with the client to make settlement recommendations and resolve numerous cases through alternative dispute resolution. Galaviz is also advising an aerospace manufacturer in a dispute involving unfair competition and misappropriation of trade secrets claims, and a pharmaceutical company in a putative class action suit alleging false advertising claims.

**ANGELO GHAILIAN**

President
AJG, Inc/Astrologie California

Angelo Ghailian's success as the owner and founder of Astrologie a testament to his strategic vision and adaptability in the ever-changing fashion industry – and also to his adept use of technology to navigate and enhance the apparel production landscape. Ghailian's leadership has propelled Astrologie from a cut-and-sew manufacturing operation in 2003 to a vertically integrated, complete-package garment-production company. This evolution is a demonstration of embracing technology to streamline and optimize production processes. Integration of technologies like computer-aided design and computer-aided manufacturing speaks to Ghailian's commitment to precision and efficiency throughout the design-to-manufacture workflow.

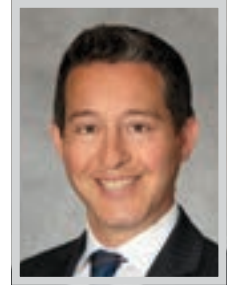
Ghailian's commitment to quality, reliability, and speed-to-market, essential in the fast-paced fashion industry, is complemented by technology-driven solutions. In response to challenges such as tariffs on Chinese goods, Ghailian's forward-thinking approach involves the strategic use of digital tools for real-time supply chain monitoring.

**AZA GHAZARYAN**

Tax Partner
Withum

Aza Ghazaryan is an entrepreneur, a business leader and an exceptional CPA. She started as a junior accountant, then morphed into the tax partner role before starting to develop into a business development partner.

Ghazaryan has taken responsibility for leading the team through the implications of tax regulation changes. Over the last few years, she has guided Withum's accountants through numerous complex transformations, including the Tax Cuts & Jobs Act and several COVID-19 relief programs. As a result of her research, training and determination, all of the firm's clients were consulted about the wide variety of implications and, where applicable, received the maximum level of relief from schemes such as the Paycheck Protection Program and the Main Street Lending Program. Ghazaryan cares deeply about her clients and strives for optimal outcomes when providing tax compliance and consulting services.

**DAVID GOLDBERG**

Partner
Armbruster Goldsmith & Delvac LLP

A prominent land use lawyer with extensive experience working with local jurisdictions and state, regional and federal agencies to secure regulatory approvals, David Goldberg has played a key role in helping many high-profile clients navigate planning and zoning regulations and environmental challenges, allowing projects up and down the state to be brought to a successful conclusion. He also is one of the state's foremost experts in the California Coastal Act, representing clients on complicated permitting and enforcement matters before the California Coastal Commission.

Goldberg currently is working to create a transit-oriented mixed-use development at the LA County Metro North Hollywood station comprised of 1.5 million square feet of residential, office and retail/restaurant uses, through his representation of Trammell Crow in its joint development with LA County Metro. In September 2023, he assisted in obtaining the Los Angeles City Planning Commission's recommendation that the City Council approve the project.

**JUSTIN GOODWIN**

Partner
DTO Law

Justin Goodwin, partner at DTO Law, has earned a reputation as the go-to litigator for his Fortune 500 clients' most complex and challenging cases. His ability to distill complex matters down to a simple set of manageable problems sets him apart from his peers.

Goodwin understands that identifying the simplest, most elegant solution to a problem often requires thinking outside the box. In some instances, this means ignoring the prevailing framing of an issue by courts and litigants in other cases in favor of a novel argument derived from first principles. In other instances, it means forgoing conventional litigation strategies altogether. In a recent trade-secrets arbitration, for example, Goodwin understood that the parties' unresolved emotions would prevent any conventional settlement. Rather than simply forging ahead with a costly evidentiary hearing, Goodwin laid the groundwork for the parties to resolve their differences through an asset acquisition.

**NICOLE GORDON**

Partner
The Sohagi Law Group, PLC

Nicole Gordon, a partner at The Sohagi Law Group, advises public agencies on complex environmental and land use matters at the administrative, trial and appellate level. She focuses her practice on complex issues and projects under the California Environmental Quality Act, the National Environmental Policy Act, the federal and California Endangered Species Act, and Planning and Zoning Laws.

As the 2018-2019 chair of the Executive Committee of the Environmental Law Section of the California Lawyers Association (formerly a division of the State Bar), Gordon is at the forefront of the environmental law issues with which public agencies must grapple. Gordon has also served as frequent lecturer on environmental matters at various public and private workshops, including courses and conferences sponsored by UCLA, Continuing Legal Education, the Association of Environmental Professionals, and the American Planning Association.

**MICHELLE GRACIE**

Commercial & Residential Specialist
The Beverly Hills Estates

Michelle Gracie's journey has been one of constant evolution and enduring success. In 2023 America's Best Rankings, she has been part of the ranked top 1.5% of 1.6 million real estate professionals in the United States.

Gracie has honed a unique set of qualities and strategies, including a profound understanding of the market, built upon years of experience, forms the bedrock of her achievements. She holds client confidentiality in the highest regard, and her unwavering commitment to their best interests is the cornerstone of her real estate ethos. Clients know they can trust Gracie to prioritize their best interests, and she has built relationships that endure beyond individual transactions. Advocating for her clients with clarity and empathy, she strives to ensure their needs are not just met but truly understood.

**MATTHEW GRUENBERG**

Partner
DLA Piper

Matt Gruenberg is an experienced transactional lawyer who devotes his practice to the franchise and distribution industry, where he represents and provides counsel to clients in matters involving franchise and distribution law, mergers and acquisitions, joint ventures, licensing and strategic partnerships, debt and equity financings, and real estate issues. Gruenberg counsels companies in all aspects of franchise and distribution law, including structuring and restructuring franchise programs, navigating difficult issues with franchisee associations, and establishing expansion and acquisition strategies. Gruenberg also is able to lead mergers and acquisitions involving franchise companies.

Gruenberg's clients include public and private companies, private equity institutions and portfolio companies, and high-profile individuals in such industries as manufacturing, textiles, healthcare, sports and fitness, restaurants and food service, fashion and apparel, hospitality, real estate, entertainment, advertising and media, financial services and technology.

MICHELLE GRACI

Thriving in Her 40's

Michelle Graci is a shining example of influence in the quick-paced real estate industry, where dedication and creativity meet to create unmatched success. Michelle, who is a **renowned agent at The Beverly Hills Estates** and the **President of Sports and Entertainment Division**, is not only a real estate expert but also a trailblazer who is changing the scene as she gracefully approaches her 40s.

Reaching Brand-New Heights

Michelle's path is distinguished not only by her accomplishments but also by her skill in navigating the ever-changing real estate landscape. She was named among the **Top 1.5% of 1.6 Million Real Estate Professionals** in the United States by the esteemed 2023 America's Best Rankings.

Building Connections, Not Transactions

Michelle views real estate as a communication art where each transaction tells a tale of participation. Her capacity for effective communication guarantees that clients' requirements are fully comprehended. Michelle not only flourishes in her forties, but she sets a bar for excellence that appeals to others and draws them back again and time again.

Beyond Sales: A Commitment to Social Impact

Michelle goes above and beyond the typical Realtor responsibilities. Beyond transactions, she actively supports the community's welfare by participating in neighborhood events and charity. To foster a feeling of purpose among her clients, she pledges to contribute a percentage of her commission in their honor to the charity of their choice.

A Powerhouse Among Influential Leaders

Michelle is a visionary leader who redefines success in her 40s. Among the Leaders of Influence honored by Los Angeles Business Journal, Michelle is an undeniable force due to her exceptional path and dedication to the greater good. She continues to lead the way as the real estate industry changes; she is a true maverick with a significant influence.

CONTACT MICHELLE

✉ mgracirealestate@gmail.com

🌐 www.michellegraci.com

📞 818-967-8295

📷 [michellegracie](https://www.instagram.com/michellegracie)



LOI: THRIVING IN THEIR 40s

**JOSEPH GUARDARRAMA**

Attorney
Kaufman Legal Group

Joseph Guardarrama joined Kaufman Legal Group in 2011, bringing a unique blend of private practice experience and service as a public official to the firm's Governmental Ethics, Campaign Finance, and Election Law practices. At Kaufman Legal Group, Guardarrama advises candidates, officeholders, political action committees, independent expenditure committees, major donors, lobbyists and corporations regarding all legal aspects of their involvement with the political process at the state and local levels.

Prior to joining the firm, Guardarrama served as a planning commissioner in the City of West Hollywood for over seven years. During his tenure on the Commission, he presided over its meetings as both chair and vice chair, and dealt with complicated land use policy matters such as the creation of a new General Plan, the Red Building expansion of the Pacific Design Center and multiple affordable housing developments. He has extensive experience with land use, zoning, and planning issues.

**CHRISTIAN HARIOT**

Employee Benefits Consultant
Burnham Benefits Insurance Services, LLC

Christian Hariot possesses an exceptional ability to inspire trust and confidence in those around him. His empathetic understanding of others forms the foundation of his strong client and carrier relationships, built on trust and mutual respect. His colleagues rely on him for his expertise and tireless work ethic, intuition, graciousness, and kindness. His career journey, starting at ING Financial where he successfully handled critical 401K cases, reflects his resilience in navigating challenges, including the 2008 market crash and subsequent workforce reductions. Transitioning to PEO, he excelled in managing various employer responsibilities and benefit administration. His growth led him to The Leavitt Group, where he delved into the complexities of benefit management.

In his current role at Burnham Benefits, Hariot leads with strategic planning, account management and new business sales. His responsibilities include renewal negotiation, marketing analyses, and ensuring compliance, demonstrating his dedication to high standards.

**TIAUNIA HENRY**

Partner
Gibson, Dunn & Crutcher LLP

Tiaunia N. Henry is a partner in Gibson, Dunn & Crutcher's Los Angeles office where she is a member of the firm's Litigation Department with a diverse practice that focuses primarily on complex business litigation, including antitrust, breach of contract and transnational cases. As an experienced litigator and trial attorney, she has represented clients in various industries including the oil and gas, medical device, media and entertainment, semiconductor, and information technology consulting industries.

Henry has extensive experience representing multinational corporations, both foreign and domestic, in disputes that involve litigation pending in multiple jurisdictions, including the development of legal strategies to avoid inconsistent rulings, preclusion of claims, and/or waiver of defenses in subsequent litigation. Henry has also been an active member of the LA Area Diversity Committee since joining the firm in 2007. She has served as co-chair of Gibson's LA Area Diversity Committee since 2012.

**MATTHEW HEYN**

Vice Chair
Colliers

Matthew Heyn is a vice chair at Colliers, based in the Greater Los Angeles region. He leads the Integrated Advisory Services Team, a group comprised of industry-leading professionals who specialize in agency leasing and tenant representation, multimarket occupier, and account-led business, advising a lauded global portfolio of law firms, private equity investment firms, mid-cap and Fortune 500 companies, and many of the industry's top institutional owners.

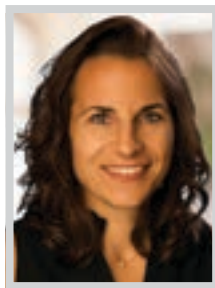
Heyn and the Integrated Advisory Services Team offer their clientele a dynamic service experience through elevated real estate solutions and a boutique approach. Heyn is known for his innovative and deliberate transactional approach. Valuing long-term partnerships above short-term gains, he seeks to build individualized client relationships with a tailored service approach to meet the specific needs of each business endeavor. Leading a team of 12 professionals, Heyn is responsible for ensuring quality, consistency, and continuity through Colliers' integrated service delivery model.

**KAYLA HORACEK**

Of Counsel
Hahn & Hahn LLP

Kayla Horacek has extensive experience in dissolution matters, including but not limited to child custody, property division and support. Horacek also has a deep understanding of paternity matters and domestic violence issues. She also handles transactional family law matters such as prenuptial agreements, postnuptial agreements, and cohabitation agreements.

As a Certified Family Law Specialist and accredited Minor's Counsel, Horacek is an accomplished and compassionate attorney who challenges herself to earn credentials that ultimately benefit her clients. She was also a behavioral technician for children with autism. She is a trusted resource and thoughtfully advises her clients during complicated and challenging situations. Horacek has also been recognized in various publications throughout her career. She contributes her perspective on the Appellate Court's decision on adjustments made to support agreements and how the ambiguity of the ruling affects future modifications.

**LAUREN HUDECKI**

Partner
DTO Law

Lauren Hudecki is a seasoned litigator whose practice focuses on complex commercial and employment litigation matters, including arbitration, mediation, and trial. She has represented commercial clients in various areas, including those involving contracts, consumer class actions, mass torts, and intellectual property. Hudecki is representing American Honda Motor Co., Inc. in three nationwide automotive class actions. Earlier this year, she successfully secured dismissal of a false advertising class action at the pleading stage on behalf of Target. She was also a member of the DTO team representing State Farm Fire and Casualty Company in a putative class action case, which was dismissed without leave to amend.

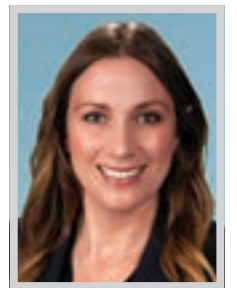
Prior to joining DTO, Hudecki developed her practice at Cole Pedroza LLP, Quinn Emanuel Urquhart & Sullivan, LLP, and Young Conaway Stargatt & Taylor, where she garnered a vast array of experience, including first and second chairing multiple trials and successfully arguing dispositive motions.

**JAELYN EDWARDS JUDELSON**

Partner
Akin

Jaelyn Edwards Judelson is a highly regarded partner in Akin's renowned international trade practice where she advises the world's leading technology companies on complex export controls and sanctions compliance matters, voluntary disclosures and internal investigations in an increasingly dynamic regulatory landscape. Judelson regularly leads clients through high-stakes engagements on novel trade issues at the intersection of advanced technology, national security and evolving geopolitics, including her clients in the software, semiconductor and electronics manufacturing space. Within the firm, Judelson co-chairs the Black Firmwide Resource Group and serves on both the firmwide and Los Angeles office diversity, equity and inclusion committees.

Judelson regularly advises clients about complex and quickly changing legal and business concerns for engagements involving Russia, Ukraine and entities based in the People's Republic of China. She takes a coordinated and multidisciplinary approach to support clients in navigating new developments.

**NICOLE KAMM**

Partner
Fisher Phillips

Fisher Phillips' Nicole Kamm represents a broad range of clients, from small businesses to national companies, in a variety of industries, including healthcare, technology, manufacturing, retail, hospitality, construction, transportation and professional services. Kamm defends employers and provides dispute resolution counsel against individual and class claims of discrimination, harassment, retaliation, wrongful termination, and wage and hour violations before state and federal courts and administrative agencies.

Kamm also provides strategic counsel and management training on employment issues that arise in the workplace, including hiring, discipline and termination decisions, leaves of absence, reductions in force and compliance issues arising under Title VII, the California Fair Employment and Housing Act, the California Family Rights Act, the Americans with Disabilities Act, the Fair Labor Standards Act, the California Labor Code and Industrial Welfare Commission wage orders, and the federal and California Worker Adjustment and Retraining Notification Act.



GRIFFITH OBSERVATORY FOUNDATION CONGRATULATES EXECUTIVE DIRECTOR

ANN MARIE BEDTKE

ON BEING NOMINATED FOR *LABJ'S LEADERS OF INFLUENCE: THRIVING IN THEIR 40S*



Griffith Observatory Foundation is the exclusive non-profit partner of Griffith Observatory supporting science literacy, education, and public astronomy.
www.GriffithObservatoryFoundation.org

LOI: THRIVING IN THEIR 40s

**EMILY UYEDA KANTRIM**

Interim Executive Director
Safe Parking LA

Emily Uyeda Kantrim, the interim executive director of Safe Parking LA, has a career characterized by remarkable achievements in addressing homelessness and leading a groundbreaking response to the COVID-19 pandemic. In 2016, Kantrim began her journey as an advocate for safe parking strategies to address the rapidly growing number of people and families in Los Angeles County whose only source of shelter is their vehicle. Collaborating with Safe Parking LA's founders, she played a pivotal role in effecting local policy changes that allowed community-based agencies to provide safe parking services.

Kantrim's commitment to addressing homelessness extends beyond her role at Safe Parking LA. She temporarily stepped away to serve as the Director of COVID Response for LA County. In this role, she oversaw a workforce of 350 multidisciplinary staff, delivering crucial services like testing, vaccinations, quarantine support, and guidance to over 66,000 homeless individuals across Los Angeles County.

**DANILO KAWASAKI**

Vice President and COO
Gerber Kawasaki Wealth and
Investments Management

Danilo Kawasaki started his career in the financial services industry at SunAmerica Securities in 2002, where he was quickly promoted to the branch manager position of the West Los Angeles branch by the age of 24. After he tripled branch revenues in only three years, his branch became the top office in the company.

However, after the 2008 financial crisis, Kawasaki felt that clients deserve modern, impartial, independent financial advice in line with their goals and tolerance for risk. Aiming to challenge the status quo, he partnered with Ross Gerber to found Gerber Kawasaki Wealth Management. Currently, Kawasaki is the co-founder, vice-president and COO. He oversees the compliance and day-to-day operations of the firm while serving his individual clients. He is also a member of the Gerber Kawasaki Board of Directors and the Investment Selection Committee.

**ARASH KHORSANDI**

Chief Executive Officer and Owner
Law Office of Arash Khorsandi

In the bustling world of Los Angeles business, some leaders stand out not just for their professional achievements but for the indelible impact they leave on those around them. One such luminary is Arash Khorsandi, the heart and soul of Arash Law. Khorsandi's immigrant roots instilled in him a work ethic and a passion for justice that have been the cornerstone of his remarkable journey. These qualities not only led him to graduate from USC Marshall School of Business but also to blaze a trail in the legal profession, becoming an attorney at 24.

Khorsandi has led Arash Law from a fledgling entity to a statewide juggernaut with over 50 committed professionals. This success is the result of Khorsandi's visionary leadership, his knack for assembling an elite team, and an unyielding commitment to justice.

**EUGENE KIM**

Principal
Lee and Associates
Los Angeles North / Ventura Inc.

Eugene Kim, a principal at Lee & Associates-LA North/Ventura, specializes in representing tenants and landlords involved in the sale and leasing of office properties across the greater Los Angeles region. With a wealth of experience in real estate, Kim brings a diverse skill set to the table, assisting tenants in negotiating lease transactions and crafting optimal and productive workspaces. He has managed operations for over 4.5 million square feet of commercial assets, overseeing capital improvements, renovations, and tenant improvement projects, while facilitating leases, acquisitions, and dispositions valued at over \$200 million.

Kim is a resourceful problem solver and adept negotiator who advises clients to remain flexible and adaptable in the face of unexpected challenges, known as Black Swan risks. He and his team have adeptly responded to unique events that have impacted both real estate landlords and tenants, tailoring their strategies to meet the specific needs of each client.

**JASON KIM**

Counsel
Hunton Andrews Kurth LLP

Global brands count on Jason Kim, litigation counsel at Hunton Andrews Kurth's Los Angeles office, to navigate their most high-profile cybersecurity and privacy class actions in California. He counts among his clients Meta Platforms Inc. (fka Facebook), Bath & Body Works, Inc., Walmart, Neiman Marcus, Flurry, Rite Aid, Checkers Drive-In Restaurants, MGM and Verizon. Kim has litigated multiple highly publicized data breach class actions, financial services class actions and consumer class actions for a broad spectrum of companies. Kim has served as litigation counsel to one of the largest online services in the world in class actions involving the largest reported data breach in history.

Last year, Kim won a significant victory for Bath & Body Works, Inc. in a high-stakes class action involving multiple prominent retailers. Kim ultimately obtained a complete dismissal of Bath & Body Works from the lawsuit through a successful challenge to the court's jurisdiction.

**LIZ KLEBANER**

Partner; Co-Chair, Pro Bono Committee
Nossaman

Liz Klebaner advises private and public agency clients on a variety of complex land use and environmental matters, including California Environmental Quality Act, National Environmental Policy Act, California Coastal Act, Williamson Act, Subdivision Map Act, planning and zoning law, and federal and state environmental regulatory compliance. Klebaner also litigates in state and federal court. Her coverage of new CEQA legislation and other CEQA-related developments has appeared in trade publications and in online and print environmental law news outlets. Klebaner also frequently speaks on CEQA, NEPA and coastal law matters.

Klebaner is co-chair of Nossaman's Pro Bono Committee. Her work as committee co-chair includes mentoring junior attorneys, fostering partnerships between Nossaman and pro bono legal services organizations, and overseeing charitable contributions to organizations that deliver pro bono legal services. She also handles pro bono immigration and asylum matters.

**RUDY LIRA KUSUMA**

CEO
Carsten Phillips Inc.
(dba Your Home Sold Guaranteed Realty)

Rudy Lira Kusuma, CEO of Your Home Sold Guaranteed Realty, helped his team of agents complete the sales of over 5,000 homes more than \$1 billion in transactions without following industry norms and standards related to prospecting and marketing in 2022. Your Home Sold Guaranteed Realty opened two new offices and was included in the INC 5000 Fastest Growing Companies in America. In addition, the company donated over \$100,000 to Children's Hospital Los Angeles, World Harvest and other local causes.

Kusuma says he is most proud of "empowering, equipping and elevating the lives of many real estate agents and their families to achieve their hearts' desires...." As an example, he pointed to a team member who joined the company at age 22 and in seven years was able to help her parents financially and open a family restaurant.

**YAN KRYMSKY**

Design Director
Perkins&Will

Originally from Ukraine, Yan Krymsky, design director of Perkins&Will's Los Angeles Studio, has lived in Los Angeles since the age of three and has over 20 years of experience designing iconic international projects. He has led the studio through a wide range of project typologies, including multi-family residential, institutional, healthcare, workplace and higher education. His work has received numerous honors and recognitions.

Krymsky's vital influence has established studio-wide design processes under the idea that architecture has a civic duty to represent the culture and heritage of the people it serves. This ethos is a guiding force of his design philosophy and has led the studio to great success. His work in Destination Crenshaw, a 1.3-mile-long outdoor gallery highlighting the arts and cultural contributions of African-Americans in Los Angeles captures much of the intentionality of his design approach, an approach that captures the spirit and identity of a community.



Santiago Arana

Proud To Be Recognized By Los Angeles Business Journal Leaders Of Influence: Thriving In Their 40s

Career Highlights

20+ Years
IN THE INDUSTRY

Closed Over \$4.6 Billion
WORTH OF REAL ESTATE

The Agency MVP
2021 & 2022



2021 GOLDEN I CLUB
AWARD WINNER

TOP LUXURY AGENT
IN THE COUNTRY



#3 AGENT IN CALIFORNIA
#10 AGENT IN USA

RANKED AMONGST THE TOP AGENTS
FOR 11 CONSECUTIVE YEARS



2021 PHILANTHROPIC
IMPACT AWARD

TOP 30 AGENTS IN HOLLYWOOD
FOR 11 CONSECUTIVE YEARS



SHOWBIZ REAL ESTATE ELITE
FOR 11 CONSECUTIVE YEARS



MOST INFLUENTIAL PEOPLE IN REAL
ESTATE FOR 5 CONSECUTIVE YEARS



1028 Ridgedale Drive

BEVERLY HILLS | \$85,000,000 | 12 BEDS | 18 BATHS | 24,325 SQ. FT. | 55,455 SQ. FT. LOT



8201 Bellgave Place

LOS ANGELES | \$28,500,000 | 4 BEDS | 6 BATHS | 9,052 SQ. FT. | 23,307 SQ. FT. LOT



1741 Correa Way

BRENTWOOD | \$26,500,000 | 6 BEDS | 7.5 BATHS | 35,868 SQ. FT. LOT



1156 San Ysidro Drive

BEVERLY HILLS | \$15,950,000 | 7 BEDS | 11 BATHS | 11,369 SQ. FT. | 26,026 SQ. FT. LOT

*Are you looking for positive results in challenging times?
Let experience do it.*



SANTIAGO ARANA
PRINCIPAL AND MANAGING PARTNER
SANTIAGO@THEAGENCYRE.COM
310.926.9808 | LIC. #01492489



THEAGENCYRE.COM

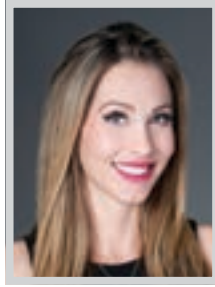
LOI: THRIVING IN THEIR 40s

**JOSHUA LEE**

Founder & CEO
Ardius / Gusto

Joshua Lee started his career at EY and eventually helped lead its west coast practice in tax credits during his tenure there. After leaving EY, he helped pioneer a venture model known as “venture building” (now more popularly known as “venture studio”), and founded Two Coins Group, which invested in more than 23 seed stage start-up, with nine exits. He still serves as a venture scout for many venture capital groups in Silicon Beach. Lee took on several board positions and began looking into ways to help many of the companies he helped start. This led to the forming of Ardius.

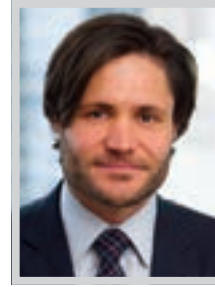
Lee started, built and orchestrated an acquisition by Gusto in just 18 months. Because of the timing, speed and nature of this venture, Lee owned the majority of the company, but found a way to give almost half of the “exit” to his team / early note-holders.

**JENNIFER LIESER**

Partner
Kaplan Marino, PC

Jennifer Lieser handles white collar and complex criminal matters with a holistic and team approach – surrounding herself with a team of experts prepared to achieve each client’s objective, whether through litigation or behind-the-scenes negotiations with government agencies. She practices at the national level, focusing on federal and state bribery and kickback matters, fraud, money laundering, cybercrime, cryptocurrency regulatory issues, international extradition and other white collar and complex criminal matters.

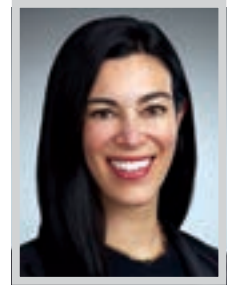
Lieser’s ability to articulate complex legal principles and successfully argue on behalf of her clients has garnered her national attention. After a fellow US District Court judge ruled against dismissal of property fraud counts in the infamous college admissions case, Lieser managed to achieve a different result on behalf of her client in front of another District Court judge, who granted the defense’s motion to dismiss those counts and significantly curtailed the government’s ability to proceed on others.

**PETER MAIR**

Partner
Skadden, Arps, Slate, Meagher & Flom LLP

Peter Mair is head of Skadden’s Los Angeles Real Estate Group. He is an accomplished dealmaker, experienced in a remarkable range of public and private real estate, private equity and M&A transactions. Clients consider Mair a “one-stop shop” for large, complex, multi-faceted deals where he is called upon to provide not just legal counsel, but also commercial advice geared toward maintaining and creating sustainable value. He thrives in leading transactions that are extremely complicated and typically involve addressing and resolving diverse key business, legal, real estate, tax, employment and liability issues.

Most recently, Mair represented Cosm, Inc., a global technology company that delivers immersive experiences for sports and entertainment, science and education, and parks and attractions, in connection with the development, construction and operation of its first immersive public entertainment venue in Hollywood Park, the retail district located adjacent to SoFi Stadium.

**LEEANNE MANCARI**

Partner
Covington & Burling LLP

Leeanne Mancari is a standout leader in the eDiscovery field. She is a true eDiscovery litigator, a category not many eDiscovery attorneys belong to. Not only that, eDiscovery is a technology-driven industry and Mancari brings a wealth of knowledge on AI and cutting-edge eDiscovery technologies to her clients. She built a practice group focused on eDiscovery and is bringing her experience to expand the group at Covington.

Mancari is relied upon by clients to represent their interests when disputes arise regarding data in litigations and investigations, even including accusations of spoliation. Mancari has successfully handled these disputes before judges numerous times and frequently has negotiated with opposing counsel. Her comfort and experience with litigation absolutely sets Mancari apart, as so many eDiscovery attorneys contribute only behind the scenes. Mancari is well-known for finding creative, efficient and effective processes for handling complex data in legal matters.

**BRANDON MARSH**

Associate
Hueston Hennigan LLP

Brandon Marsh’s practice is focused on complex, high-stakes business litigation, including securities litigation, intellectual property litigation, contract disputes and employment matters. He has represented both plaintiffs and defendants in all phases of litigation in federal and state courts, at both the trial court and appellate levels.

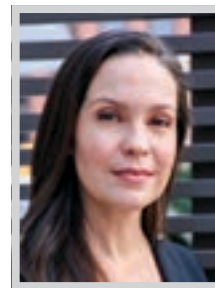
Marsh was a key member of the team that won the largest-ever US trademark awards for Monster Energy Company against rival beverage company Vital Pharmaceuticals, Inc. Following a two-week trial, the arbitrator held that VPX’s Bang Energy does not contain advertised muscle-building creatine and infringed on “Bang” trademark. In the significant ruling, the arbitrator awarded Monster and Orange Bang \$175 million in damages, nearly \$10 million in attorney’s fees and costs, and a 5% royalty on all future sales of Bang Energy (with over \$1.5 billion in annual sales).

**HEMAL MASTER**

Managing Shareholder
Frاندzel Robins Bloom & Csato, L.C.

Hemal Master serves as the Frاندzel Robins Bloom & Csato’s managing shareholder. He maintains a robust practice focusing on all aspects of lender representation, including representation of commercial banks, private equity funds, commercial finance companies, hedge funds and other lenders in real estate and commercial loan transactions, commercial and real estate loan workouts, lender liability defense, and exercise and enforcement of all types of lender remedies.

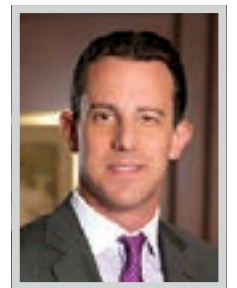
In addition to his experience with the firm, Master completed a three-year-long secondment to a major regional bank in which he advised on hundreds of matters involving distressed debt and supervised litigation on matters in 45 different states. Master regularly speaks at both industry events and to clients on timely topics involving finance. In addition, he currently serves as the general counsel for the Western Independent Bankers and on the Event Planning Committee for the Special Assets Management Association.

**KATHRYN McCANN**

Founding Partner
Annaguey McCann LLP

After 17 years of working at mid-size bi-coastal firms, Kathryn McCann and her friend and law partner, Maribeth Annaguey, decided to strike out on their own with the goal of engaging in a smaller, more client-focused practice. Along with another partner and two long-time staff members, in May 2023, they founded Annaguey McCann LLP, a minority and women owned litigation boutique. Since opening, the firm has grown to five attorneys and three full-time staff, all colleagues from previous firms.

McCann has focused her legal career on representing national and global companies in large, complex and class action litigation in the areas of business, real estate, contracts, employment and entertainment. She has handled cases in California federal and state courts, the California Court of Appeal, the US Court of Appeals for the Ninth Circuit, as well as before various arbitral tribunals and administrative hearing boards.

**JON McNUTT**

Partner
Musick, Peeler & Garrett, LLP.

Jon McNutt is a partner in Musick, Peeler & Garrett’s Los Angeles office. He represents hospitality, higher education, healthcare, manufacturing, retail, transportation, gaming, entertainment, financial services and many other industries in all aspects of employment and labor law. His practice primarily involves traditional labor on behalf of management, including union campaigns, collective bargaining, defending union grievances, arbitrations, representation cases, and unfair labor practice charges before the National Labor Relations Board.

McNutt also counsels employers on a wide variety of employment and labor issues, including employee terminations, workplace investigations, management training, reduction-in-force planning, and conducts wage and hour and employer practices’ audits. McNutt also has broad experience and knowledge in federal and California individual privacy regulations pertaining to sensitive personal information and data, including HIPAA, the California Consumer Protection Act, the Consumer Privacy Rights Act, and the California Consumer Records Act.

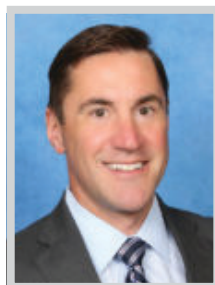
LOI: THRIVING IN THEIR 40s



SELINA MEERE
Chief Operating Officer
Trevanna Tracks

In 2018, Selina Meere moved from New York City where she had an established career as a book publishing executive to Los Angeles where she had to form a professional network and establish herself within the entertainment industry. While working for two years to launch and build the brand for an award-winning women-founded and run fintech, she continued to make connections in the media industry.

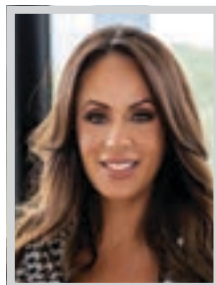
When Meere met Jennifer Freed, the founder and CEO of Trevanna Tracks – a SaaS platform in which media companies track, execute and report on the business activities required to use music in productions - they forged an instant connection at a time when the company needed a new managing director. A non-tech leader, but one who relies on instincts, curiosity, a level head and a positive outlook, Meere was able to prove that she could help forge Trevanna Tracks to a new level.



WILLIAM MEYERS
Partner
Hill, Farrer & Burrill LLP

William A. Meyers is a trial lawyer specializing in complex business litigation, trade secret disputes and legal malpractice defense. Meyers has extensive trial, arbitration and appellate experience. He has also advised an array of corporate clients on transactional matters, including the selection and formation of business entities and the negotiation and drafting of various commercial contracts.

Meyers was admitted to the California Bar in 2009. He has spent his entire legal career with Hill, Farrer & Burrill, and manages the firm's accounting and finance operations. Meyers received his JD/MBA degree in 2009 from USC Gould School of Law and Marshall School of Business. He graduated from the University of Virginia's McIntire School of Commerce in 2003 with a Bachelor of Science degree in Commerce and a concentration in finance, along with a second major in Psychology.



GINA MICHELLE
Director, Estates Division
The Agency

Atop-producing broker, designer and trained negotiator, Gina Michelle has achieved over \$1 billion in career sales. Michelle brings 18 years of real estate experience and a reputation for integrity, transparency and intelligence to The Agency. Ranked for four consecutive years among the top 1% of agents nationwide, she was The Agency's Top 5% 2022 Chairman Award recipient.

Michelle joins The Agency from Gina Michelle Project, the acclaimed design and real estate firm she founded in 2009. Specializing in home renovations and design, Michelle takes a unique approach to how real estate is bought and sold, driven by the belief that every property can and should, be sold as a renovated property. Through her exclusive partnership with PriceLift, Michelle's clients benefit from home and property upgrades and renovations before listing their homes for sale, which in most cases dramatically increases the selling price of a property.



DAN MILLER
Partner
Miller Barondess, LLP

Dan Miller is one of the founding partners of Miller Barondess, LLP, a Los Angeles-based firm specializing in litigation, trials, and appellate work. Miller is skilled at crafting a case strategy to accommodate each client's interests and objectives. He has tried and won cases before juries and arbitration panels in California and around the country.

Miller secured over \$3 million in settlements from the City of Los Angeles on behalf of victims of sexual assault by two former LAPD officers (Miller worked closely with the DA, and the former narcotics officers ultimately pled guilty and were sentenced to 25 years to life in prison); obtained an \$11 million award for an affiliate of a LA-based global private equity firm against two telecommunication companies and their parent company based in Lebanon for breach of a reseller agreement while also defeating a \$30 million counterclaim brought by the companies in Lebanon.

2023 LEADERS OF INFLUENCE

– Los Angeles Business Journal

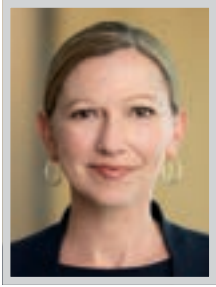


Congratulations to our partners
DAN MILLER and JASON H. TOKORO
and all other honorees who are
Thriving in Their 40s



Litigators | Trial Lawyers | Appellate Law
millerbarondess.com

LOI: THRIVING IN THEIR 40s

**MELISSA MILLS***Partner*

Wilson Sonsini Goodrich & Rosati

Little more than a year into her tenure at one of the nation's most prestigious law firms, Melissa Mills has established herself as a trial lawyer capable of parachuting into matters of the highest stakes. To her private practice, Mills brings a background as a federal prosecutor and military lawyer, having conducted trials everywhere from Los Angeles to a foreign combat zone.

Shortly after arriving last year at the Los Angeles office of Wilson Sonsini Goodrich & Rosati, Mills was asked to play a critical role in a case brought by Vanessa Bryant, the widow of Kobe Bryant. The August 2022 jury trial arose from the emotional distress caused by Los Angeles County employees who used their personal smartphones to take and gratuitously disseminate graphic photographs of the site of the helicopter crash that killed Kobe Bryant and his daughter Gianna.

**KATIE MORAN***Special Counsel*

WilmerHale

Katie Moran has over a decade of experience representing companies around the world in a wide range of industries—including telecommunications, technology, social media, transportation, entertainment, healthcare, pharmaceutical, commodities trading and financial services—in high-profile and high-stakes criminal and administrative matters involving federal and state government investigations.

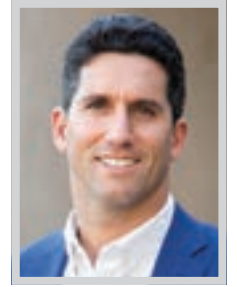
Moran represents corporate clients in multi-regulator investigations, including involving the Department of Justice, Securities and Exchange Commission, Commodity Futures Trading Commission, FINRA and the National Transportation and Safety Board. She has experience in matters related to the Foreign Corrupt Practices Act, crisis management, market manipulation, securities fraud, financial and accounting fraud, insider trading, wire fraud, anti-money laundering, and commercial disputes. Among her impactful matters was her work representing a global energy trading company in parallel DOJ and CFTC investigation concerning alleged corruption and market manipulation.

**EDWARD MOYZES***CEO*

Strategic View Advisors

Originally a solo financial advisor, Ed Moyzes was a leader among his peers from day one, finishing first in the country among new advisors during three of his first four years. As his practice grew, he saw an opportunity to expand his impact beyond his own ability to meet with clients, and over the last five years, his team – Strategic View Advisors – has more than doubled from five to thirteen team members, including eight certified financial planners.

As Moyzes built his business, he saw that most advisors focus on products and sales instead of people and advice. Believing that there is a better way to partner with clients, Strategic View Advisors coalesced around a simple idea: “Achieve Financial Peace of Mind.” With this focus, Strategic View Advisors retained over 98% of their clients in 2022 despite having nearly tripled in size over a five-year period.

**MICHAEL NOURMAND***President*

Nourmand & Associates

As president of Nourmand & Associates, Michael Nourmand leads a team of realtors with integrity and is considered one of the foremost authorities on residential real estate. Over the past 18 months, Nourmand & Associates did nearly 900 sales and approximately \$1.5 billion in sales volume with Nourmand himself handling more than 30 sales and in excess of \$125 million in sales volume. Since he took over the helm of the company in 2008, the company's sales volume has grown exponentially.

Top tier local and real estate trade publications frequently rely on Nourmand to provide a unique perspective, a wealth of statistics, and thorough research on the Los Angeles real estate market. He focuses on selling estates, condos, and income properties throughout Los Angeles. He knows the local inventory because he makes a concerted effort to view as many properties as possible.

**ROXIE NUNNALLY***VP of Marketing*

4D Marketing Business Solutions

Roxie Nunnally stands as a beacon of inspiration, a name synonymous with excellence across a multitude of domains. Her achievements and community awards are not mere accolades but a testament to a life dedicated to creating positive change. With a keen acumen for marketing and business, Nunnally's innovative strategies have shattered boundaries and set new standards. Her campaigns are not just advertisements; they're conversations that spark connection and loyalty. She has woven a tapestry of success that spans continents through strategic partnerships.

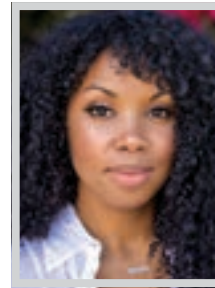
Beyond the boardroom, Nunnally's heart beats for humanity. Her non-profit initiatives ripple through communities, bringing smiles to faces that have long yearned for hope. Her commitment to sustainable practices transforms wastelands into oases of growth. Through her, the world sees the true power of compassion in action. As an educator, she nurtures young minds, instilling wisdom and values that prepare students to conquer the evolving world.

**ERNIE OCAMPO***Partner*

Reed Smith LLP

Ernie Ocampo is a partner at Reed Smith. As office managing partner of the firm's Century City office, he oversaw the reopening of that office and drove successful adoption of the firm's return-to-office policies. As partner chair of the Asian American Pacific Islander (AAPI) group, he develops programs to celebrate and educate others on AAPI matters, including US firm-wide celebrations of AAPI Heritage Month.

Ocampo's legal practice covers a broad range of transactional matters, including equity and debt financings, formation and corporate governance, mergers and acquisitions, joint ventures, and day-to-day legal matters. In addition to acting as outside corporate counsel for his clients, Ocampo advises entertainment clients in connection with investments, joint ventures and business launches. He represents start-up and emerging growth companies in venture finance and M&A transactions, with an emphasis on the life sciences industry.

**CODIE ELAINE OLIVER***Founder & Chief Creative Officer*

Black Love

In her roles at Black Love, Codie Oliver has made significant strides in upholding the company's dedication to fostering a community centered on Black love and meaningful conversations. This is exemplified by the annual Black Love Summit, recently hosted in Atlanta for the sixth consecutive year. The summit celebrates diverse forms of Black Love with thought-provoking workshops, inspiring panels, and a rich array of programming designed to resonate with those in committed relationships, still searching for the right one, looking to strengthen their bonds with family and friends, and many others.

One of Oliver's standout achievements is the impactful docuseries, Black Love, which she co-created and directed. This trailblazing series, honored with five NAACP Image Awards nominations, broke records by becoming the most-viewed unscripted series in OWN's history. The series, spanning six seasons, portrays the complexities of Black love and relationships, leaving an undeniable mark on television and society.

**KEITH ORSO***Partner*

Irell & Manella LLP

As partner with Irell & Manella LLP for more than a decade, Keith Orso balances his role in firm leadership with a thriving patent law practice in the firm's litigation and intellectual property groups. Orso sits on the firm's Executive Committee and is one of three partners on Irell's Management Committee, which fulfills the function of a managing partner. He also serves as hiring chair of the firm's Los Angeles office, and chairs Irell's Mentoring Committee.

Orso regularly represents large technology and life sciences companies in highly complex IP matters. He is experienced in a wide range of technologies from pharmaceuticals and biotechnology to computer architecture and communications. He has leveraged his education (he holds a graduate degree in chemical engineering) and background to navigate the complex scientific and technological nuances involved in such matters, helping him secure significant victories for clients.

LOI: THRIVING IN THEIR 40s



CHRISTOPHER PASSMORE

Partner-in-Charge, Encino Office
Withum

Chris Passmore’s accounting career has been extraordinary. Before joining Martini Partners as a senior accountant in 2006, he spent several years working with publicly and privately held businesses while at PricewaterhouseCoopers. He understands both the accounting firm and client side of the business, having served as a corporate controller for a publicly held manufacturing company. At Martini Partners, Passmore progressed quickly through supervisory and management positions and became managing partner before age 40. He went on to spearhead 30% growth in revenue while revitalizing the brand, which took the firm from a local accounting firm to a regional player. In early 2022, Martini Partners was ranked as one of the 15 largest firms in the San Fernando Valley.

In February 2022, Passmore led the firm through an exceptionally successful merger into a top 25 national accounting firm, and currently serves as Withum’s partner-in-charge of the Encino office.



MARIA PEARMAN

Partner
GHJ

Maria Pearman, CPA, CGMA, serves as GHJ’s Beverage Practice leader. She is a food and beverage industry leader, shown leadership in the growing client accounting services space and has written two books on essential business principles for entrepreneurs in food and beverage.

Pearman’s accounting career started in an unexpected place, beginning with a career in arts management and radio before she realized her interests would be applicable to public accounting. After preparing tax returns for several breweries, she realized her clients spent more money getting their books clean at the end of the year than they spent on tax returns. Inspired by this need in the marketplace, she founded an accounting firm offering a wide range of outsourced accounting services for the beverage alcohol industry and expanded her expertise to comprise the larger food and beverage market. She has even authored two books on the subject.



CHRISTOPHER J. PETERSEN

Partner
Blank Rome LLP

Christopher Petersen’s practice focuses on trials of complex business disputes, primarily in the real estate sector. Although he focuses on real estate disputes, Petersen handles all areas of litigation including trusts and estates and disputes related to California charter schools. Over the last several years, he has tried (jury and bench) or arbitrated three-four business disputes per year—a significant volume. Since joining Blank Rome ten years ago, he has tried or arbitrated more than 30 cases, including as lead counsel in several jury trials and arbitrations.

Petersen is part of a Blank Rome team that represents many of the largest non-classroom-based charter schools in California. In the last several years, these schools have faced many legal challenges to their operations, and Petersen has litigated several issues of first impression under the Charter Schools Act on their behalf, including issues impacting the locations where schools are permitted to operate.



EMIL PETROSSIAN

Partner
Glaser Weil

Emil Petrossian is a leading litigation partner and trial attorney with a successful practice that entails all facets of complex commercial litigation in federal and state courts and arbitral forums. Petrossian is co-resident in Glaser Weil’s Los Angeles and San Diego offices.

Petrossian has extensive first-chair experience litigating high-stakes, eight- and nine-figure commercial disputes for major businesses throughout the country. In addition to having significant jury trial experience in both state and federal courts, Petrossian had handled numerous arbitrations and has substantial appellate experience in federal Courts of Appeals and the California Court of Appeal. While tenacious in the courtroom, Petrossian understands the nuances of big-ticket litigation. He tailors a litigation strategy for each client, in each matter, that’s designed to formulate the best possible outcome. At every stage, he zealously protects and promotes the client’s business interests while working toward resolving disputes, not prolonging them.



astrologie
CALIFORNIA

WWW.ASTROLOGIECA.COM
SHOPASTROLOGIE.COM

INFO@ASTROLOGIECA.COM

7220 E. SLAUSON AVE
COMMERCE CA, 90040.
323.346.0101

FOUNDED IN 2003

LOI: THRIVING IN THEIR 40s

**ERIC PETTIT**

Partner
King & Spalding

Eric Pettit is a trial lawyer and former federal law clerk with nearly two decades of experience litigating a broad range of complex commercial matters, including partnership, real estate, employment and intellectual property disputes, securities actions (both civil and regulatory), and construction defect, environmental and professional negligence cases. In addition to his extensive experience before state and federal trial and appellate courts throughout the country, Pettit has arbitrated many cases with AAA, JAMS and FINRA.

Over the course of his career, Pettit has represented a diverse roster of clients, including real estate developers and investors, senior executives, A-list celebrities, music labels, movie studios and Fortune 500 companies. As part of his commercial litigation practice, for the last several years, Pettit has represented numerous investors in the Low Income Housing Tax Credit program, which provides billions of dollars in federal tax credits to help incentivize capital investment in affordable housing.

**ALEXANDER PORTER**

Partner
Davis Wright Tremaine LLP

By the time he turned 40, Alexander Porter had already earned the distinction of belonging to a small group of trial lawyers with real first-chair trial experience, handling litigation matters from inception, through trial and appeal.

Prior to joining his current firm of Davis Wright Tremaine, Porter served as an assistant United States attorney in the Major Frauds Section of the US Attorney's Office in Los Angeles and trial attorney with the Fraud Section of the US Department of Justice, establishing his reputation as one of the leading white-collar and government fraud lawyers in the country. He has led enforcement matters from the investigation phase, bringing them in front of juries and handling appeals in the US Court of Appeals for the 9th Circuit. Today, Porter represents clients across various industries, including healthcare, financial services, media and technology industries, in high-stakes government investigations and complex litigation matters.

**DOUG PRAW**

Partner
Holland & Knight

Doug Praw, a partner at Holland & Knight and its West Coast Real Estate Practice Group leader, has built a thriving career by establishing and nurturing lasting relationships. He places trust at the top of the list when identifying the attributes necessary for success. His ability to instill trust in his clients, colleagues, family and friends has been the key to a brilliant career.

Praw's greatest achievement is the practice he's built over the past 20 years. As practice group leader, he is responsible for growing and managing Holland & Knight's commercial real estate business in eight Western states. His team of 35 attorneys serves a full range of legal needs for clients engaged in the development, construction, operation and financing of real estate projects around the country. Since 2006, Praw has represented financial services giant Morgan Stanley in its real estate work for investors.

**DANIEL PRINCE**

Partner
Paul Hastings, LLP

Daniel Prince is a partner in the Litigation Department of Paul Hastings. After nearly two decades with the firm, the last 12 months may have been his most successful yet. First, Prince led the Paul Hastings team to a complete victory for Rear Admiral Bruce Loveless (Ret.) in what has been described as the "worst corruption scandal" in the history of the US Navy.

Paul Hastings represented Adm. Loveless pre-trial and at trial, having reviewed approximately 14 million documents, prepared key motions, and participated in an evidentiary hearing during trial on the government's withholding of exculpatory material (the court concluded that the lead prosecutor engaged in "flagrant misconduct"). The government obtained more than two dozen guilty pleas in this matter. Following a 15-week trial and approximately three weeks of deliberations, the jury returned convictions on four defendants but reached no verdict against Adm. Loveless.

USC
Viterbi

THE USC VITERBI SCHOOL OF ENGINEERING
celebrates

Burcin Becerik-Gerber

Dean's Professor and Chair of the Sonny Astani Department
of Civil and Environmental Engineering

◦ *for her recognition as a* ◦

"Leader of Influence: Thriving in their 40's"



LOI: THRIVING IN THEIR 40s



RAHUL RAVIPUDI

Partner

Panish | Shea | Boyle | Ravipudi LLP

Panish | Shea | Boyle | Ravipudi LLP partner Rahul Ravipudi and has spent his legal career handling catastrophic injury and wrongful death cases involving commercial vehicles, pedestrians, industrial or construction accidents, utility negligence, dangerous conditions of public and private property as well as cases of sexual abuse and sexual assault. He also represents consumers in class actions against businesses who engage in unfair/illegal business practices and public entities in cases where corporations have endangered the safety, health, property or comfort of the public.

Ravipudi currently serves as public entity plaintiffs' co-lead counsel in the JUUL Labs Product Cases, representing school districts and other public entities in California involved in litigation against the electronic cigarette manufacturer. Has also serves as plaintiffs' co-lead counsel in the Southern California fire cases litigation arising out of the 2017 Thomas Fire and subsequent debris flows in Montecito.



JASON REESE

Shareholder

Vedder Price

Vedder Price shareholder Jason Reese is based in the firm's Los Angeles office and is a member of its Finance & Transactions group. His practice is focused on M&A, venture capital, joint ventures, private equity investments and general corporate matters.

Reese is actively involved in the management and expansion of Vedder Price. He was an initial founding partner of the Los Angeles office and is the managing shareholder of the office as well as a member of the Board of Directors of the firm, also serving on a number of important management committees. Since the office opened in 2014, he has helped the firm build a significant full-service practice serving Los Angeles and all of Southern California. Reese typically represents family businesses and other area enterprises with venture capital and growth financing and is known to have a practical, business friendly approach to his practice.



LISA REIBOLD

Member; Co-Member-in-Charge, Los Angeles Office

Clark Hill

Promoted to Clark Hill member in January 2022 and just a year later assuming the duties of co-member-in-charge of the firm's Los Angeles office, Lisa Reibold maintains a high-profile practice in labor and employment law, advising some of the state's largest employers.

Reibold has successfully defended clients in multi-million-dollar wage-and-hour cases, either defeating the cases entirely or settling them favorable on terms for clients. In recent years, she has been lead counsel on multiple class action lawsuits in California, often securing release for her clients from ongoing litigation before the cases went to trial. In 2023, Reibold successfully completed representation of Star Pro International Security and Training in a Fair Labor Standards Act case by adeptly removing the bulk of the case from California to Michigan, saving the client millions of dollars. She then settled the remaining 30 California claims on terms favorable to the client.



SARAH REZNICK

Financial Advisor

Edward Jones

Working the cash register of her parents' small business at eight years old, Sarah Reznick quickly learned the steps to secure a strong financial future: work hard, live within your means and save. She also learned it took a lot of work and sacrifice. Those early experiences sparked her desire to empower business owners to feel confident about their own financial outcomes. That path led her to join Edward Jones as a financial advisor in 2011.

Reznick has built her business with compassion, mentorship and energy working directly with many trusted advisors in various fields to be a true Sherpa for her clients in the local community. She has done this while raising three young boys, being a group leader for many organizations including Provisors and building one of the most impactful practices for Edward Jones.



CONGRATULATIONS TO OUR COLLEAGUES Karl Seitz & Jing Shen

on being selected by the *Los Angeles Business Journal* as two of

Los Angeles' Leading Professionals in their 40s

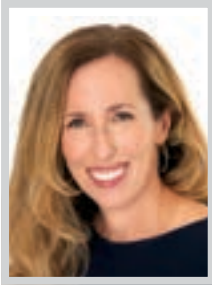


CBIZ.COM | MHMCPA.COM

Karl Seitz, Senior Manager | Jing Shen, Senior Manager

CBIZ is a business consulting, tax and financial services provider and works closely with MHM (Mayer Hoffman McCann P.C.), an independent CPA firm providing audit, review and attest services. CBIZ and MHM are members of Kreston Global, a worldwide network of independent accounting firms.

LOI: THRIVING IN THEIR 40s

**SUSAN ROHOL**

Partner, Privacy, Cybersecurity & Data Strategy
Willkie Farr & Gallagher LLP

Susan Rohol is a partner in Willkie's Privacy, Cybersecurity & Data Strategy, AI & Emerging Technologies, and Investigations and Enforcement practice groups in Los Angeles. She is a leading privacy and data strategy lawyer with experience in the communications and entertainment sectors and on Capitol Hill. As a part of Willkie's Privacy, Cybersecurity & Data Strategy and AI & Emerging Technologies groups, her practice is focused on advising clients on legal issues and regulations spanning technology, privacy, cybersecurity, artificial intelligence, intellectual property, regulatory investigations and global government affairs.

Prior to joining Willkie, Rohol served as senior vice president and chief privacy officer for Warner Bros. Discovery. She helped build and manage a global team of more than 60 legal, technology and compliance professionals responsible for operations, data governance, brand engagement, data mapping and project management.

**SHLOMI RONEN**

Founder; Managing Principal
Dekel Capital

Shlomi Ronen is a managing principal and founder of Dekel Capital where he heads the company's JV Equity, Capital Advisory and Correspondent Lending platforms. During his more than 20-year career in real estate, including the last 18 years working in a real estate capital advisory role, Ronen's impact on the commercial industry landscape is well documented. In the past 20+ years, he has invested or advised on more than \$5 billion in equity, mezzanine, and debt financing for investors and developers throughout the US, positioning himself as an industry leader.

Ronen is also managing principal of Dekel Strategic Investors (DSI), a proprietary equity fund that fills the gap in the capital markets for equity investment between \$3 and \$10 million. Ronen is fully engaged with everything that DSI is doing as the firm invests JV-Equity with developers focused on development of senior housing properties throughout the US.

**MICHELLE SAQUILAYAN**

Senior Associate; Senior Project Manager
Leo A Daly

As a senior associate and project director at Leo A Daly's Los Angeles studio, Michelle Saquilayan, RA, LEED AP BD+C, brings over 17 years of experience as a project manager and project architect, demonstrating exceptional proficiency in all facets of healthcare projects. Saquilayan's role encompasses the critical task of communicating with healthcare clients to conceptualize designs that address their unique needs, followed by the meticulous development of these designs into comprehensive contract documents, seamless construction administration, and ultimately, project completion.

For the last ten years, Saquilayan's dedication to advancing healthcare facilities for America's veterans is emblematic of her profound commitment to serving an important community. Her expertise in this realm has culminated in building much-needed VA clinics and hospitals, directly impacting the lives of veterans and their accessibility to healthcare. Her work on the VA Loma Linda Eye Clinic stands as a testament to the depth of her influence.

**TODD SCHERWIN**

Regional Managing Partner
Fisher Phillips

Fisher Phillips' Todd Scherwin is a powerful and effective advocate for Los Angeles-area business clients facing thorny employment issues and perilous lawsuits. One of California's premier labor and employment attorneys, Scherwin has blazed a trail in the ever-evolving world of California employment law through highly successful advocacy – including a track record of victories for employers and, recently, sitting at the counsel table before the US Supreme Court. He has also led the firm's burgeoning Los Angeles office since 2013, opened a Woodland Hills office in 2020, and founded (and co-chairs) the firm's Sports Industry Team in 2021.

Scherwin recently won summary judgment in Los Angeles Superior Court for a leading restaurant chain against a former employee's wrongful termination, harassment and discrimination claims and served as Counsel of Record in the US Supreme Court for amicus curiae Restaurant Law Center, a public policy organization affiliated with the National Restaurant Association.

A Place Called Home congratulates our CEO, Norayma Cabot, for being named among LA Business Journal's Leaders of Influence: Thriving in Their 40s!

For 30 years, A Place Called Home has served our community — inspiring, encouraging, and supporting the young people in South Los Angeles to achieve social, emotional, and economic success.

apch.org | [@apch2830](https://twitter.com/apch2830)



LOI: THRIVING IN THEIR 40s



LAUREN SCHNEIDER
 Managing Partner, California Offices
 Lewis Roca

Lauren Schneider, a partner at Lewis Roca specializing in intellectual property, is the office managing partner for Lewis Roca’s California offices, where she oversees more than 40 lawyers and 50 staff members, demonstrating her exceptional leadership within the field.

Schneider’s experience spans US and international patent procurement, portfolio development, licensing, and opinion work. Her profound impact is evident in her provision of patent strategy and portfolio management to major clients across diverse technical disciplines, ranging from biotechnology to polymer chemistry to medical devices. This extensive range of contributions distinguishes her as an exceptional figure in her field. What truly sets Schneider apart is her commitment to fostering diversity in the predominantly male-dominated realm of intellectual property. Being only the third female patent attorney to attain partnership status within her firm showcases her dedication to breaking barriers. She also actively mentors diverse patent attorneys and advocates for gender diversity.



JOSHUA SCHNEIDERMAN
 Managing Partner, Los Angeles Office
 Snell & Wilmer

Joshua Schneiderman is a corporate and securities partner in the Los Angeles office of Snell & Wilmer. Schneiderman advises clients on a wide range of transactional matters, including mergers and acquisitions, joint ventures and public and private offerings of debt and equity securities. He advises clients on matters related to franchising. He also advises public and private companies on corporate governance matters.

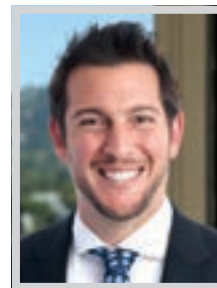
Schneiderman is an instrumental member of the corporate and securities practice group who was voted into the partnership after just two years with the firm. He has served as lead counsel on sophisticated mergers and acquisitions and financing matters, assisting clients with access to much needed capital in turbulent financial markets. He is excellent at managing a deal team and serving as the point person to coordinate the flow of work and responsibilities among investment bankers, accounting firms, public relations firms and legal specialists.



KARL SEITZ
 Senior Manager
 CBIZ & MHM

Karl Seitz is a senior manager with CBIZ & MHM in the firm’s Tax and Advisory Group. Seitz has more than 20 years of public accounting experience. His technical expertise is in international planning, succession and estate planning, tax consulting, tax return preparation, financial analysis and consulting, and mergers and acquisitions. He works with high-net-worth individuals, trusts, partnerships, corporations and S-corporations in a variety of industries, including architecture, entertainment, real estate, wholesale and retail.

In the last year, Seitz has successfully completed CBIZ & MHM’s rigorous Emerging Managing Director Academy which develops multiple skillsets and enables Seitz to be a more well-rounded business leader. Seitz is a member of the firm’s International Taxation Committee, as well as the Diversity & Inclusion Task Force as a member of the Building Diversity & Inclusion Network Committee. He is also currently one of CBIZ & MHM’s Employee Retention Tax Credit champions.



RUSTY SELMONT
 Partner
 Ervin Cohen & Jessup LLP

Rusty Selmont is a partner in Ervin Cohen & Jessup’s Litigation Department, specializing in intellectual property, real estate, partnership disputes and complex commercial litigation. Selmont believes that optimal legal decisions are not made in a vacuum. He makes a point to learn and understand each client’s business early on to ensure that the litigation approach is aligned with and reinforces the client’s overarching goals and needs. His clients normally approach him to collaborate on customized strategies for high-stakes business disputes and tactical lawsuit avoidance.

Selmont’s practice spans across the business sectors of health care, virtual reality, technology and entertainment, concentrating his focus on intellectual property litigation and licensing, as well as representing numerous healthcare facilities and physicians in a variety of complex business matters throughout California. He also has considerable experience and success litigating real estate matters and more generalized commercial disputes.

Congratulations to
Aaron Estrada

on being named to the
Los Angeles Business Journal’s
**“Leaders of Influence:
 Thriving in Their 40s.”**



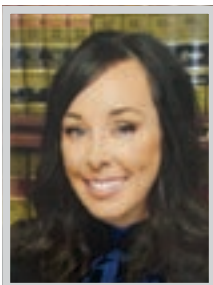
LOI: THRIVING IN THEIR 40s

**CHRISTEN SEWELL**

Partner
Covington & Burling LLP

In her current role as a partner in Covington's Los Angeles office, Christen Sewell counsels private and public companies and executives on all aspects of employee benefits and executive compensation. She has a particular focus on benefits issues for early stage and emerging companies, including advising on the design, compliance, and administration of stock options and equity-based plans and arrangements as well as drafting and negotiating executive compensation arrangements, including, employment, retention, change in control and separation agreements.

Among her recent work, Sewell recently represented Flexbase Technologies, a financial platform for small businesses, on the equity and executive compensation aspects of \$120 million equity and debt financings. She also represented Betr, a direct-to-consumer sports micro-betting company and new media venture launched by Jake Paul and Joey Levy, on the equity and executive compensation aspects of \$50 million in financings.

**CHRISTINA SHAFFER**

Family Law Attorney
Shaffer Law

Christina Shaffer has been practicing family law since 2004, during which time she has received numerous awards for her family law advocacy, including the 2018 Ventura County Star Reader's Choice for the Best East County Law Firm. Shaffer has also received the Conejo Valley Chamber of Commerce 40 Under 40 Award based on her advocacy for victims of domestic violence and complex family law issues. Shaffer's volunteer experience includes assisting litigants at the local Self Help Center and Free Legal Clinic, and providing the local judiciary with assistance as a Settlement Officer.

Shaffer is skilled and experienced at representing cases ranging from mediation to high conflict litigation. As a certified collaborative family law attorney, she assists clients in reaching out of court settlement agreements. Shaffer's mediation training and compassionate, yet down to earth, attitude give her the ability to effectively represent clients through extremely turbulent times.

**JING SHEN**

Senior Manager
CBIZ & MHM

Jing Shen is a senior manager with CBIZ. She has 20 years of experience providing tax services to her clients in a variety of industries, including manufacturing, real estate, wholesale distribution, fixed income portfolios management, professional services and entertainment. She assists her clients with complex tax matters, including tax compliance, planning and consulting services to business partnerships, C Corporations and S Corporations as well as high-net-worth individuals.

Shen participates in CBIZ's Women Founders Network (WFN) events and has presented to WFN during the Female Founders Workshop on the topic of "Startups: Pitching, Fund Raising & Survival," which provided legal, IP and financial advice to female founders of early-stage startups. Shen has also presented on the topic "Hidden Taxes: Avoiding Pitfalls." Shen also participates in many Asian-American networking events in the Los Angeles area to educate Asian investors and immigrants regarding the US tax laws.

**JOHN SHENK**

Founding Partner
Mancini Sherk LLP

Mancini Sherk founding partner John W. Sherk is a litigator focused on shareholder and derivative, cannabis, and business disputes. With extensive experience in partnership disputes and the personal nature of fights within businesses, Sherk has come to refer to his specialty as "business divorce."

Shenk helps his clients understand their rights and assert them effectively, whether they be partners, shareholders in a corporation, members of an LLC, or joint venturers. This often requires diplomatic negotiation or out of court arbitration. In others, it may demand bare-knuckled litigation. In all cases it is a strategic process he navigates with agility, finesse, and force when needed. Sherk has handled some of the most prominent shareholder and investor litigation in the legal cannabis industry. His successes on behalf of clients confronting managers intent upon self-dealing and, at times, outright fraud, place him at the forefront of litigation in the legal cannabis industry.



**Leaders of Influence:
Thriving in Their 40's**
– Los Angeles Business Journal, 2023

Congratulations to

**Maribeth Annaguey, Esq. &
Kathryn L. McCann, Esq.**

Annaguey — McCann

Established in 2023, Annaguey McCann LLP combines decades of legal experience with a modern approach to business disputes.

10880 Wilshire Blvd., Suite 1101

Los Angeles, CA 90024

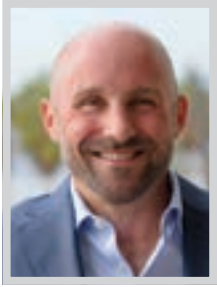
Phone: 424.431.0078

Email: info@annagueymccann.com

www.annagueymccann.com

This material may be deemed "Attorney Advertising."

LOI: THRIVING IN THEIR 40s

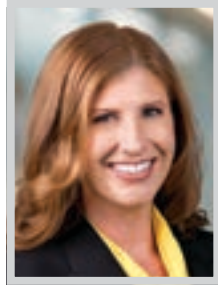


GREG SKALASKI

Executive Vice President, West Region
Shawmut Design and Construction

Just passing the five-year mark as executive vice president of Shawmut Design and Construction's West region, Greg Skalaski has led the Los Angeles team in diversifying its offerings and increasing its average project size. With a focus on growing its education, ground-up commercial, and life science portfolio, the team completed major projects in the past year: UCLA's Nimoy Theater; one of the largest cross-laminated timber buildings in the city at 843 N Spring Street; and 50,000 square feet of lab space (repurposed from a warehouse and office building).

With more than 20 years of experience working on Los Angeles projects, Skalaski understands the unique impact of supply chain volatility and labor challenges on construction in Southern California, and has built out a skilled preconstruction team to identify and resolve issues before a project begins, providing certainty of outcome for clients.



LAURA SMLOWE

Partner
Munger, Tolles & Olson LLP

The world's most prominent companies, including Amgen, Facebook and Snap, look to Laura Smolowe to guide them through their thorniest legal matters with a creative, determined and steadfast hand—leading major trials and internal investigations and negotiating favorable resolutions in complex disputes.

At Munger, Tolles & Olson, Smolowe co-leads the Trade Secret and Employee Mobility Practice Group, co-chairs the Recruiting Committee, and is a member of the firm's Management Committee. Her practice focuses on complex commercial litigation and trials, arbitrations, and counseling clients in a wide variety of matters involving trade secrets, privacy, breach of contract, breach of fiduciary duty and fraud. An expert in her field, Smolowe publishes and speaks regularly, including co-authoring the chapter on trade secrets and restrictive covenants in multiple editions of the California Business Litigation handbook and numerous articles on related topics in legal journals, and appearing on panels at conferences around the country.

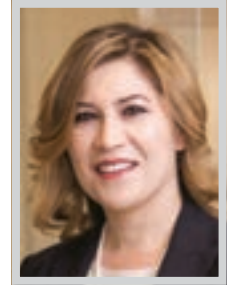


TYSON SOHAGI

Partner
The Sohagi Law Group, PLC

Tyson Sohagi's practice focuses upon environmental law, land use and planning law, the Coastal Act, the California Environmental Quality Act, the National Environmental Policy Act, the Public Trust Doctrine and election law. Sohagi received a B.S. in Mechanical Engineering from UC Berkeley that assists with SLG's review of issues involving complex legal and technical issues. He advises public clients on complex matters such as infrastructure projects (transmission lines, port facilities, airport facilities, intermodal and on dock railroad facilities, utility plants), mass transit fees, general plans and specific plans, specific development proposals, and other land use issues.

Many of Sohagi's projects have involved complicated issues pertaining to historic resources, water supply, sea water intrusion, groundwater, water quality, stormwater, wastewater, cultural resources, air quality, greenhouse gases, hazardous materials, noise and geology. Sohagi also has substantial experience related to transportation analysis.



ELIZABETH SPERLING

Partner
Glaser Weil

Elizabeth Sperling is a litigation partner in Glaser Weil's Los Angeles and San Diego offices. Sperling focuses her practice on the representation of financial institutions and other consumer-facing businesses (including in the food and beverage, products, retail and gaming spaces), real estate companies, property owners and high net worth individuals.

Sperling has extensive trial, arbitration and appellate experience in class actions, business torts, shareholder litigation, unfair business practices and related consumer protection actions (Fair Credit Reporting Act, Equal Credit Opportunity Act, Truth in Lending Act, Consumer Legal Remedies Act, Electronic Fund Transfer Act), unfair debt collection practices, loan workouts, state attorneys general investigations and litigation, and products liability and complex toxic tort cases. She is also actively involved in diversity and inclusion efforts at the firm level and within the broader legal community.

GEOLINKS

**BUSINESS
INTERNET
& VOICE**

GeoLinks congratulates Ryan Adams for being recognized as a 2023 Leader of Influence: Thriving in Their 40s



Connectivity You Can Count On

GEOLINKS.COM / (888) 225-1571

Clark Hill

Congratulations to Lisa Reibold, a 2023 Leader of Influence: Thriving in Their 40s.

Lisa Reibold
+1 213.417.5330
lreibold@clarkhill.com

clarkhill.com



LOI: THRIVING IN THEIR 40s



PETER STRIS
Founding Partner
 Stris & Maher LLP

Peter Stris is the founding partner of Stris & Maher, a 20-lawyer litigation boutique that represents clients in difficult and high-stakes business disputes. Based in Los Angeles, Stris leads the firm’s nationwide trial and appellate practice. Over his 20-year career, he has successfully first-chaired a wide variety of bet-the-farm business cases to verdict or judgment. He has also handled dozens of high-profile business appeals, including 10 he personally argued before the US Supreme Court.

Stris’ pathbreaking work has led both himself and Stris & Maher to nationwide prominence. Stris has delivered a number of major wins for clients, including, for example, prevailing in emergency proceedings before the US Supreme Court on behalf of client HEC Pharma, allowing generic manufacturers to enter the market for fingolimod, a drug for which Novartis had held a patent (invalidated in this case).



DAVID SUTTON
Partner
 GHJ

David Sutton is a partner at GHJ and leads the firm’s M&A projects. He also leads GHJ’s Private Equity Practice. Motivated by the work he does for clients, Sutton is passionate about the advisory services he provides and how they can positively shape his clients’ futures. He brings a wide depth of experience in mergers and acquisitions.

Sutton advises clients on their M&A strategies and objectives and executes transactions. Prior to joining GHJ, he advised on transactions ranging from \$10 million to \$1 billion across a variety of industries. He has provided performance improvement, restructuring and turnaround advice to companies and their stakeholders. His advisory experience includes work in the retail, technology, manufacturing and real estate sectors. In January 2023, Sutton was promoted to partner at the firm. He was instrumental in launching GHJ’s Private Equity Practice in early 2023.



ANA TAGVORYAN
Partner; Co-Chair, Corporate Litigation Practice Group and Class Action Defense Team
 Blank Rome LLP

Ana Tagvoryan has more than 16 years of experience defending and managing risk involving high-stakes consumer class action claims in and out of the courtroom related to rapidly evolving areas such as consumer privacy, data handling, advertising and marketing for e-commerce and traditional commerce, healthcare, and goods and commodities for publicly traded and household name clients, securing orders of affirmation or reversal from courts of appeals and the US Supreme Court, among others. She has a reputation for strategically disposing of cases early and efficiently.

In a recent putative class action case under the Magnuson-Moss Warranty Act, Tagvoryan and her team secured a victory before the Eighth Circuit Court of Appeals. This victory was critical for retailers like Target to continue to defend against plaintiffs’ claims in federal court, leading the way for more than 15 similar putative class action cases being stayed pending the outcome of Target’s appeal.



SKYLAR TAYLOR
Founder; CEO
 Taylor Melrose Cosmetics

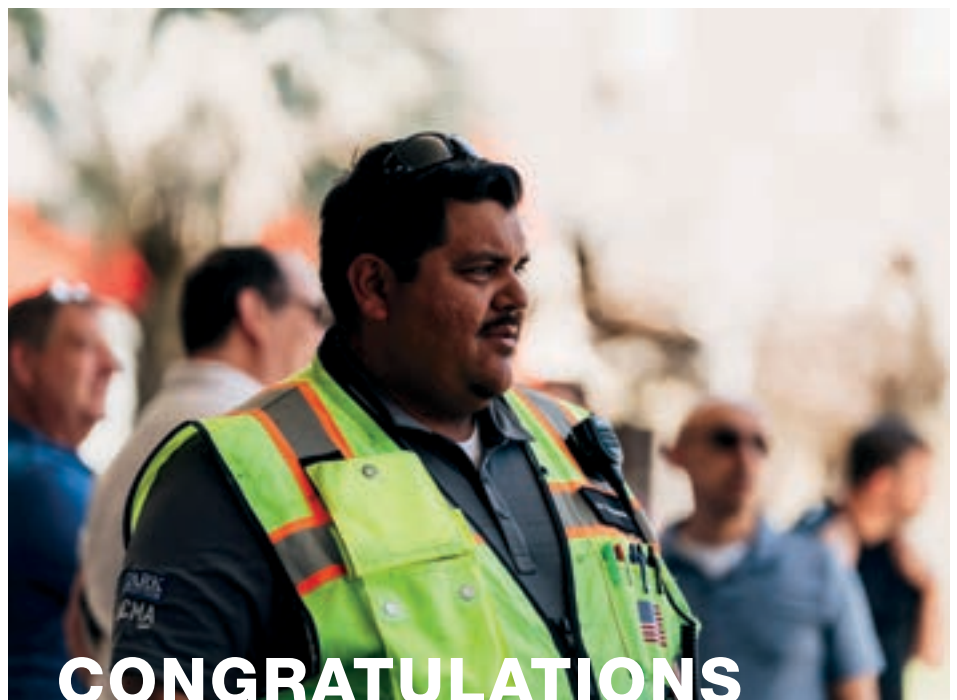
Taylor Melrose, founded by Skylar Taylor, represents a beacon of inclusivity, diversity and innovation in the beauty industry. Taylor’s remarkable journey as the driving force behind this black, gay and disability-owned brand is characterized by a series of outstanding career accomplishments, making him worthy of exceptional recognition in his field.

One of Taylor’s most significant achievements is the rapid and substantial recognition Taylor Melrose has garnered within the beauty industry. The brand’s presence in esteemed international mainstream media outlets such as Vogue, GQ, and House & Garden is a testament to its impact. This recognition is not just a mere nod but a strong affirmation of the quality and authenticity of Taylor Melrose’s products and the brand’s ethos of celebrating diversity and intersectionality. Taylor’s commitment to crafting high-quality, genderless skincare products made from natural and performance-based ingredients is making waves.

Willkie congratulates partners **Kori Bell** and **Susan Rohol**



Los Angeles Business Journal’s
2023 Leaders of Influence:
 Thriving in Their 40s



CONGRATULATIONS ART VASCONCELOS!

At Clark, our people are as exceptional as the projects we build. We’re continuously inspired by the talented individuals who shape our company, industry, and communities.

Congratulations to Art Vasconcelos and all of the other nominees recognized with the Los Angeles Business Journal’s Leaders of Influence: Thriving in their 40s Award!



LOI: THRIVING IN THEIR 40s



JASON TOKORO
Partner
Miller Barondess, LLP

Jason Tokoro, a partner with Miller Barondess, LLP, is an accomplished trial lawyer with significant victories for both plaintiffs and defendants. He is outside counsel for the County of Los Angeles and its Board of Supervisors.

Tokoro defended the County as 2nd chair in an 11-day federal jury trial involving photographs taken by County personnel following the tragic helicopter crash that killed nine individuals, including Kobe Bryant and his daughter; won a 9th Circuit Court of Appeals ruling vacating a preliminary injunction ordering that the County and the City of Los Angeles house skid row's homeless population within six months and deposit \$1 billion into an escrow account to ensure the funds were being used appropriately; and won summary judgment on behalf of the County in a FLSA class action lawsuit relating to the State's IHSS program, in which plaintiffs sought nearly \$50 million.



JULIA TRANKIEM
Partner
Hunton Andrews Kurth LLP

Fortune 100 companies count on Julia Trankiem, labor and employment partner at Hunton Andrews Kurth LLP's Los Angeles office, to navigate the challenges of California regulations as well as federal employment law issues. She is known for extensively collaborating and providing counsel to companies to solve complex employment issues, including the challenges to California employers brought on by the COVID-19 pandemic, and the ramifications of business shutdowns and workforce reductions. Trankiem is involved in significant, high-stakes employment class actions and single and multi-plaintiff litigation, where she develops and sets a strategic charge, striving to position matters for an effective and efficient outcome.

Trankiem also regularly speaks, writes and presents on topics of interest to employers, diligently providing valuable insight and guidance to companies confronted with challenging employment laws. She has garnered distinctive recognition among her peers.



KENNETH TRUJILLO-JAMISON
Partner
Willenken LLP

Willenken partner Kenneth Trujillo-Jamison is an award-winning and result-driven litigator, who leverages his sharply honed analytical and strategic skills to efficiently handle his clients' most complex and challenging matters. His practice focuses on complex commercial litigation, including intellectual property, copyright, class action defense and entertainment-related disputes. Trujillo-Jamison has built a reputation of consistently delivering outstanding results for his clients.

Trujillo-Jamison has achieved many successes in the courtroom, including as a member of AbbVie's 100%-diverse trial team in a high-profile, nine-figure pharmaceutical lawsuit in Delaware Chancery Court against Takeda. In that case, Trujillo-Jamison helped convince the Court to find Takeda liable for breaching the parties' drug supply agreement. At both the liability and damages trials, Trujillo-Jamison examined and defended multiple expert witnesses. The court found that Trujillo-Jamison's client AbbVie suffered damages in excess of \$448 million.



JENNER TSENG
Partner
Hill, Farrer & Burrill LLP

Jenner C. Tseng practices in the areas of employment litigation, commercial litigation, real estate litigation, intellectual property litigation, insurance brokerage litigation, insurance recovery and complex insurance disputes. Tseng also advises and assists clients in non-litigation matters such as regulatory compliance, contract review and negotiation and corporate governance.

Tseng has experience representing and advising a broad array of corporate and individual clients in the resolution of their complex business and employment disputes. He is skilled in the development of cost-effective litigation strategies to attain favorable results for his clients, including law and motion practice, utilizing focused discovery and alternative dispute resolution. Tseng is a member of the litigation sections of the State Bar of California and the LA County Bar Association. Tseng has represented major universities negotiating sponsorship deals with national brands and has negotiated venue license agreements for concerts and nationally televised sporting events.

LOS ANGELES BUSINESS JOURNAL

CONGRATULATIONS
to All of the 2023 Thriving
in their 40's Nominees!

We are so proud of
24 Hour Home Care
President of Community Supports
Simon Close for earning
this recognition!

24hour home care www.24hrcares.com



LOI: THRIVING IN THEIR 40s

**STEVE TSONEFF**

Partner
Gibson, Dunn & Crutcher LLP

Steve Tsoneff has more than two decades of experience advising content producers, distributors and financiers in a variety of media and entertainment transactions, with a focus on the production, licensing and distribution of audiovisual content and various approaches to the financing of such content, including single-project, slate, corporate and co-financing transactions.

In January 2022, Tsoneff returned to Gibson Dunn after serving as general counsel and head of business affairs for the entertainment production company Madison Wells Media, where he was a member of the core management team leading the company's development, production and financing activities across film, television, live stage, video games/VR, podcasting and digital media. He previously served as the co-chair of Gibson Dunn's Media, Entertainment and Technology Practice Group. Since rejoining Gibson Dunn, Tsoneff has leveraged his unique insight into the inner workings of the entertainment business to provide specialized and pragmatic advice to his industry clients.

**YONI TUCHMAN**

Partner
DLA Piper

Yoni Tuchman focuses on representing sponsors of leading venture capital, private equity and real estate fund products in their global fundraising activities, investments, operations and exits. Tuchman has built a leading emerging manager fund formation practice, which includes a sizable component of diverse and underrepresented managers, having advised upward of a dozen such firms in their initial fund formations this past year.

Tuchman's emerging manager practice includes sponsors that are founded by seasoned investors spinning out of more established firms, groups that are led by founders who have come together from disparate other successful backgrounds to build an investment management firm, and dozens of other no less noteworthy sponsors who are building first generation investment management platforms and are reshaping the investment fund landscape. This past year, Tuchman has advised more than 35 emerging managers in their fund formations.

**ART VASCONCELOS**

Construction Executive
Clark Construction

Construction executive Art Vasconcelos has devoted his career to shaping Los Angeles' most notable structures, including the LA LIVE and Nokia Theater; the Los Angeles and Long Beach Courthouses; and three schools for the Los Angeles Unified School District. He is now overseeing the construction of the LACMA expansion, turning the vision for the new \$750 million building for the Permanent Collection into reality.

Vasconcelos grew up with construction in his blood – both grandfathers worked in the industry. Upon graduation from USC, he joined Clark Construction as a young engineer on the LA LIVE project and witnessed how it revitalized the downtown area. Since then, he has not looked back, proud to build projects that help to transform his hometown. Over his 15-year career, Vasconcelos has tackled increasingly complex projects in Los Angeles worth over \$1.9 billion and totaling over five million square feet.

**JENNIE WANG VONCANNON**

Partner
Crowell & Moring LLP

Jennie Wang VonCannon joined the Crowell White Collar team in October 2022. She is a highly accomplished trial lawyer and advisor with a strong record of success in both legal and corporate arenas. With over a decade of experience as a federal prosecutor, including serving as deputy chief of the Cyber and Intellectual Property Crimes Section, she excels in corporate defense, cybersecurity and intellectual property matters. VonCannon is a trusted resource for clients facing crises, providing guidance on litigation, internal investigations, law enforcement inquiries, cybersecurity incidents and regulatory matters. A certified information privacy professional, she has substantive expertise in the cybersecurity, data privacy, forensics and artificial intelligence spaces, which she marries with her advocacy skills.

VonCannon prioritizes building strong relationships with her clients, recognizing the unique challenges faced by corporations. She adopts a collaborative approach, working closely with in-house legal teams to provide comprehensive and strategic legal solutions.



We proudly congratulate our colleague, Jennie VonCannon, on being named among the *Los Angeles Business Journal's* "Leaders of Influence: Thriving in Their 40's."

crowell.com

©2023 Crowell & Moring LLP | Attorney Advertising

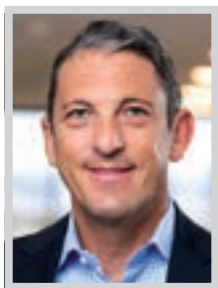


**IAN WASHBURN**

Partner
Irell & Manella LLP

With a focus on intellectual property and complex business litigation, Ian Washburn has been a leader or principal member of teams securing Irell & Manella's biggest victories. In the past two years alone, he has helped secure over \$3.3 billion in verdicts and judgments for clients in some of the most complex patent battles in the US.

Washburn's experience spans a range of industries including the biomedical, pharmaceutical, semiconductor and semiconductor packaging and computer networking sectors. He has represented clients in numerous federal courts as well as before the US Patent and Trademark Office, the ICC International Court of Arbitration and the Delaware Court of Chancery. He also assists companies in developing and managing IP portfolios and advises them during patent license negotiations. Washburn recently served as a principal member of the team that obtained a \$2.3 billion final judgment for VLSI Technology in a suit against Intel.

**MICHAEL WAXBERG**

Private Wealth Advisor
Fortify Capital

Michael Waxberg is a private wealth advisor and founder and CEO of Fortify Capital Wealth Management & Insurance Services. Waxberg is a certified financial planner and has spent over two and half decades building a nationally recognized investment and financial planning practice. He is deeply rooted in the legal, entertainment and business communities advising on comprehensive retirement, investment and estate planning strategies. He has in-depth knowledge of tax and business planning, working with both individuals and businesses helping to navigate the ever-changing financial landscape.

Waxberg's team of eight, including four CFP professionals and one J.D. CFP, is committed to bringing simplicity and clarity to those individuals and businesses whose finances can be complex and multi-layered. Waxberg leads his team with values of growth and personal responsibility, meaning that clients benefit from a team whose depth of commitment allows clients to thrive, feel heard and feel cared for.

**MATHEW WRENSHALL**

Managing Attorney, Pasadena
RMO LLP

Mathew Wrenshall's subject matter expertise, legal prowess and ability to get recognized results efficiently while holding his clients' hands through what often are emotionally charged disputes make him a leading attorney in his field. Joining RMO LLP in 2020, Wrenshall showed his leadership qualities from the outset and last year was tapped to lead the firm's Pasadena office. Since then, he has continued to raise his and the firm's profiles both in the Pasadena and greater Los Angeles legal communities.

Driven to provide relief to people grieving the loss of a loved one or coming to the aid of a compromised loved one, Wrenshall has earned a reputation for his keen ability to manage family dysfunction while securing real-world results. His clients are typically embroiled in inheritance disputes, trust contests, will contests, breach of fiduciary duty, financial elder abuse, undue influence, incapacity, accounting disputes, fraud and similar claims.

**JASON YU**

Partner
Snell & Wilmer

Jason Yu is a labor and employment and commercial litigation partner in the Los Angeles office of Snell & Wilmer, a full-service business law firm with more than 500 attorneys practicing in 16 locations throughout the United States and in Mexico, including three offices in California. His practice focuses on a broad spectrum of employment liability, commercial litigation, intellectual property and transactional work.

Yu has significant experience in cases involving debt collection, labor and employment law matters, and trade secret misappropriation. His clients are individuals and corporations, including major manufacturers, banking and financial institutions, transportation and shipping companies, import and export logistics companies, clothing manufacturers and retail clothing businesses, professional partnerships, and technology companies. As a labor and employment litigator, Yu offers his clients comprehensive advice relating to labor and employment law matters. He counsels clients regarding state and federal regulations affecting employers.

Keeping At-Risk Youth Safe

South Los Angeles youth organization A Place Called Home (APCH) started with a dozen kids in a local church basement in 1993 in the aftermath of the Rodney King uprising. Meant to keep the city's most at-risk youth safe and off its most dangerous streets, the organization has flourished over the past 30 years into an oasis in South Central Los Angeles that has nourished over 15,000 underserved youth, along with 75,000 family members and 125,000 community members.

Now occupying two corners at the intersection of 29th Street and Central Avenue, as well as running multiple community gardens throughout the neighborhood, APCH offers its young members (ages 8-21) state-of-the-art programs in music, dance, theater, fine arts and technology, as well as mental health counseling, career pathways, academic support, college advisory programs, and more.

APCH currently serves more than 1,000 meals to kids every week and their Family Resource Depot provides thousands of meals to families every week. The organization also charters The South Central Sports League, a partnership with dozens of local organizations to provide free competitive sports for 1,000 underserved youth who have little access to organized sports in their schools and community.

With a reach far beyond its 90011 zip code, APCH is helping to foster well-rounded, resilient kids. Through its APCH Shaheen Scholarship Program, the organization has successfully sent more than 500 first-generation students to top colleges and universities across the country with many returning home to make a difference in their community and the greater city of Los Angeles. One such scholar and APCH alumni



is Edgar Morales, who has now returned to serve on the organization's Board of Directors.

"There are no words to express the impact that A Place Called Home has had on my life," Morales reflected. "APCH helped me overcome many social barriers – learning English as a teenager, adopting a new culture in the U.S., and becoming more social and confident in myself. Through APCH, I was blessed with the opportunity to focus on my studies and became the first in my family to graduate from college."

Morales joined the APCH Board of Directors in 2022. He is just one of the many incredible young people to walk through the doors of APCH. Other alumni of the program currently hold positions in Mayor Karen Bass' Office of Housing and Homelessness, the Los Angeles City Attorney's Office and the Los Angeles Police Department.

For the hundreds of youth who come to the center every day, APCH is a safe haven where they can break through barriers and overcome life's challenges. Through APCH's holistic programs, members are empowered to find their voices and chart their own paths forward. Take it from APCH member Angel Rubin who, since joining over a decade ago, has discovered her passion for music and is now enrolled at the world-class Berklee College of Music with support through the APCH Shaheen Scholarship Program.

"[At APCH] it felt like I was being taken seriously for the first time in my life," said Rubin. "The motivation and encouragement the staff showed me over the years helped me build my confidence and understand that my passions are something I am able to pursue."

APCH CEO Norayma Cabot is herself the daughter of immigrants who grew up in East

LA and was a first-generation college graduate, much like the kids and teens she now serves.

"When we set out to find a new CEO for APCH in 2022, we knew it wouldn't be easy, but upon interviewing Norayma, her expertise, curiosity, and passion for the community we serve let us know she was the one," shared Gareth Schweitzer, APCH Board chair. "Since then she has hit the ground running, developing a new organizational strategic plan to guide us into the coming decades. Norayma has also championed the launch of our long-desired technology program which will bring new educational opportunities to South Central youth and substantially increase the agency's technological capacity. We are excited for the future of APCH with Norayma at the helm."

Learn more about A Place Called Home at apch.org.

LOI: THRIVING IN THEIR 40s

A Public-Private Partnership that Delivers Impact

Griffith J. Griffith gifted the land that became Griffith Park to the City of Los Angeles because he believed a great city needed a great park. Inspired by a profound experience looking through the 60-inch telescope at Mount Wilson in the San Gabriel Mountains – then the largest telescope in the world – Griffith later left a substantive gift in his will to build a public observatory, a new concept at the turn of the 20th century.

This vision became Griffith Observatory, the jewel atop Mount Hollywood with sweeping views of the basin from the sparkling coast to DTLA and beyond. After 88 years, the building still features Griffith's requirements: a telescope for free public viewing (the historic Zeiss telescope, now the most-looked-through telescope in the world), a Hall of Science with astronomical exhibits, and an educational theater. This last feature evolved into the planetarium (now Samuel Oschin Planetarium), a technology not invented until 1923, situating Griffith Observatory on the cutting edge of its time. This tradition of innovation continues today thanks to private support from Griffith Observatory Foundation, the Observatory's exclusive non-profit partner.

Chartered 45 years ago, Griffith Observatory Foundation has become a preeminent non-profit organization in the field and a stellar example of a high-performing public-private partnership.

"From monumental feats like the \$93 million renovation and expansion to ongoing technological upgrades, specialized staff support, and unique projects, Griffith Observatory Foundation ensures the Observatory is well-resourced and serves as its steady support, advisor, and amplifier," said Ann Marie Bedtke, the Foundation's executive director. "The Founda-

tion is Griffith Observatory's greatest ally and advocate."

The Observatory is owned and operated by the City of Los Angeles Department of Recreation and Parks and, as such, subject to competition for limited public resources.

In Downtown Los Angeles News, Michael Shull, general manager of the Department from 2013-2022, made the urgent case for private support to sustain public facilities like Griffith Observatory, "Los Angeles faces increasing challenges in how to provide more publicly accessible open space in the most cost-effective and timely fashion." Shull continued, "The necessity of collaboration has driven much of the work undertaken by the Department of Recreation and Parks in recent years with a continued focus toward strong partnership building to create affordable and accessible facilities and programs for city of Los Angeles residents."

The Foundation has seen the Observatory through all seasons and Bedtke, in her position since 2018, was at the helm through the COVID pandemic. Always one to find the opportunities in a challenge, she led the organization toward technology solutions and projects that didn't require regular operations of the building for success. Through fundraising, innovative tools, and staff support, she ensured Griffith Observatory had the resources to transition long-standing programs to virtual engagements. Since reopening, the Observatory continues to leverage digital channels, extending its global reach and serving an ever-growing audience with authentic and inspiring science content and programming.

Most notably, Griffith Observatory's beloved signature School Program was transformed into

a live, virtual experience and served students without interruption. Once the In-Person School Program resumed, its Online counterpart continued to operate. Together, the programs now serve tens of thousands more students than previously possible, overcoming even the barriers of geography. This increase in

to observe, ponder, and understand the sky. The Foundation believes this has the power to change the world.

Regarding his initial gift, Griffith J. Griffith said, "I consider it my obligation to make Los Angeles a happy, cleaner, and finer city. I wish to pay my debt of duty in this way to the com-

'From monumental feats to ongoing technological upgrades, specialized staff support, and unique projects, Griffith Observatory Foundation ensures the Observatory is well-resourced and serves as its steady support, advisor, and amplifier.'

ANN MARIE BEDTKE
Griffith Observatory Foundation

capacity has yielded great impact and opened the possibility of expanding the program across the country and around the world.

What makes all this possible?

Bedtke said, "The relationship between the Observatory, the Department of Recreation and Parks, and the Foundation is substantive, collaborative, and goes beyond mere financial support. It's people-powered."

She acknowledged the team of passionate supporters – donors, business partners, elected officials, board members, volunteers, sponsors, grantmakers, members, and staff – who constitute a philanthropic community unified by the Observatory's mission to inspire everyone

community in which I have prospered."

For Bedtke, everyone is a potential partner. She uses her business acumen to network and source the most innovative solutions to meet public service needs and scale programs to deliver increasingly meaningful and impactful results. The next chapter at Griffith Observatory Foundation is going to be one of great growth and expanded reach. With Bedtke at the helm, the sky really is the limit.

To become part of this legacy and this iconic Los Angeles institution, contact development@GriffithObservatoryFoundation.org or visit GriffithObservatoryFoundation.org

A Symphony of Style, Family Values and Sustainability

In the vibrant tapestry of the Los Angeles fashion scene, Astrologie California emerges not just as a brand but as a profound testament to the harmonious fusion of style, family values, and an unwavering commitment to sustainability. Founded by Angelo Ghailian in September 2003 and celebrating its 20th anniversary, this fashion journey unfolds with a unique blend of academic excellence, familial legacy, and a vision for a more sustainable future.

Angelo Ghailian, the luminary at the helm of Astrologie California, brings a distinctive academic background into the realm of fashion. An alumnus of the University of Southern California's Marshall School of Business, Ghailian immersed himself in the world of Entrepreneurship under the guidance of the Lloyd Greif Center for Entrepreneurial Studies during his undergraduate years. This foundational period ignited his passion for entrepreneurial pursuits and paved the way for a profound understanding of the intricate dynamics of the business world. Building upon this, Ghailian pursued an MBA from the University of Southern California's Marshall School of Business, solidifying his strategic vision and leadership skills.

At the core of Astrologie California's success is a dedicated team that mirrors the brand's commitment to excellence. The coworkers at Astrologie California are not just employees; they are the architects of the brand's success story. They too are a family having been with Astrologie California since near inception, including Janine Blain, Stephen Cox, Kenny

Doo, Marbella Moreno, Jennifer Kang, Annie Kim, Sandra Luz, and Shane Yamamoto. Their collaborative spirit, marked by diligence and an unyielding commitment to quality, echoes the brand's ethos.

Customer satisfaction is paramount for Astrologie California, evident in the meticulous crafting of each garment to meet the diverse preferences of its clientele. The brand has earned its stripes as a preferred choice for esteemed retail partners, including Nordstrom, Lane Bryant, Cracker Barrel, Altr'd State, LLR, and Anthropologie.

A strategic move in Astrologie California's recent expansion journey involved introducing its label to boutique retailers, marking a significant milestone. This step not only showcases the brand's evolution but also invites fashion enthusiasts to engage with its distinctive blend of innovation, style, and quality.



Beyond the realms of fashion, Angelo Ghailian's commitment extends to environmental stewardship through a robust sustainability mission. Sustainability is ingrained in Astrologie's operations, from minimizing the carbon footprint to ensuring fair treatment across the supply chain. The brand is dedicated to making a positive impact on both the fashion landscape and the planet.

Adding depth to Angelo Ghailian's narrative is a peek into his family life. His wife, Lori, brings a legal perspective to the table as an attorney who graduated from USC Gould School of Law. Together, they form the nucleus of a family that values both professional achievement and personal fulfillment. The Ghailians are proud parents of three children—Alexander, Julian, and Victoria.

Further enriching the familial narrative is Ghailian's father, Charles Ghailian, serving as the President of Monarch Apparel Group—a

testament to the family's enduring legacy in the industry. Additionally, his brother, Carlo Ghailian, President at East 8th Group, further solidifies the family's footprint in the fashion landscape.

As Los Angeles evolves, Astrologie California stands not just as a fashion icon but as an inspirational symphony. It illustrates that fashion success transcends beyond aesthetics—it is about the meaningful connections woven into each thread. The brand's story, anchored in Angelo Ghailian's vision and buoyed by familial support, is a collective journey. It is a journey of Astrologie California crafting excellence in fashion, one thread at a time.

Notably, Ghailian's community contributions extend to fostering unity and shared purpose within the Armenian community of Los Angeles. This commitment reinforces Astrologie California's dedication to making a positive impact beyond the fashion realm, contributing to the cultural tapestry of the city.

Astrologie California, through the vision and leadership of Angelo Ghailian, is a celebration of style, family values, and a commitment to sustainability. As the brand marks its 20th anniversary, it continues to weave a narrative of excellence, uniting fashion, family, and environmental responsibility into a compelling symphony.

For a closer look at Astrologie California's designs and commitment to sustainability, visit the website at astrologieca.com.