

CUSTOM CONTENT

OCTOBER 12, 2020

# WOMEN OF INFLUENCE: ACCOUNTING



**armanino**

**B | RILEY**  
Advisory Services

**BESSOLO | HAWORTH**

**CBIZ | MHM**  
Accounting | Tax | Advisory

**CohnReznick**  
ADVISORY • ASSURANCE • TAX

**Green  
Hasson  
Janks**

**GUMBINER  
SAVETT INC.** 70  
ASSURANCE • TAX • BUSINESS ADVICE

**GS**  
Gurnsey | Schneider LLP  
CERTIFIED PUBLIC ACCOUNTANTS & ADVISORS

**HCVT**  
HOLTHOUSE | CARLIN | VAN TRIST LLP

**KPMG**

**mgo**  
TYPE ATYPICAL  
A new breed  
of professional  
services firm

**MILLER  
KAPLAN**

**MOSSADAMS**

**RSM**

**WINDES**  
AUDIT | TAX | ADVISORY

WOMEN OF INFLUENCE: ACCOUNTING



# Letter from the Publisher

The 2020 Accounting MOVE Project Report took a look at the inroads women accountants — and the firms that benefit from their work — have made toward equality in the accounting field.

- Among the statistics in this year’s report:
- 90% of firms (up from 71% in 2014), have partners and principals review the results of internal pay equity surveys
  - 59% of firms (up from 48% in 2019), prepare managers for pay equity discussions
  - 52% of firms rotate emerging women leaders into client-facing roles (an all-time high)
  - 48% of firms conduct internal pay equity surveys that include base pay and bonuses
  - 38% of firms offer rotations onto executive task forces (an all-time high)
  - 34% of firms offer rotations into operating positions (an all-time high)

While there is still room for improvement, we are pleased to see progress is being made.

As noted in the report, “Accounting firms nationwide are growing in multiple directions. Women lead much of that growth with unexpected combinations of experience, skills and aptitude.”

Nowhere is that more true than in Southern California.

We’ve compiled a group, listed alphabetically, of some of the most impressive women leading the accounting industry here in Los Angeles. We’ve provided short backgrounds on their careers, practice areas and some recent accomplishments.

Congratulations to these superb Women of Influence in Accounting — and thank you for working to keep Angelenos and businesses financially stable.

Best regards,

Josh Schimmels  
Publisher & CEO



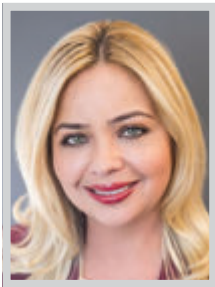
## CONGRATULATIONS ALEXANDRA CHERNYAK

At Miller Kaplan, we know that it’s about so much more than just numbers. We are honored to recognize Alexandra for her exceptional dedication, leadership, and contribution to the accounting industry, and proud to congratulate her for her inclusion among the Los Angeles Business Journal’s Women of Influence: Accounting.





WOMEN OF INFLUENCE: ACCOUNTING



**SASHA BALUKA**

Partner  
Bessolo Haworth CPAs LLP

Sasha Baluka has more than 15 years of experience in public accounting and is a partner with Sherman Oaks-based CPA firm, Bessolo Haworth LLP. In 2018, she joined the firm as a principal and was promoted to partner earlier this year. As a partner, she is responsible for leading and mentoring many of the firm’s staff members and leading audit engagements for some of the firm’s largest clients.

Baluka has technical and leadership qualities that are easily identified and utilized at Bessolo Haworth. As a CPA who also owned her own business, she has a unique understanding of the professional and personal needs of entrepreneurs. Baluka is currently leading the audit of a client with revenues of more than \$1 billion dollars. These types of engagements allow Baluka to hone her leadership skills as she mentors and leads a team of staff accountants through large and complex processes.

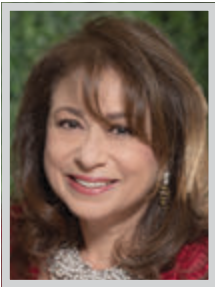


**CHERYL CALHOUN**

Managing Director  
CBIZ MHM

As managing director in the CBIZ MHM Los Angeles office, Cheryl Calhoun brings more than 30 years of experience and expertise to all facets of the entertainment industry, with a particular emphasis in filmed entertainment. She represents entertainment industry talent, production companies, entertainment service companies, media service companies, publishing companies and executives in varied tax and business matters. Calhoun is also a co-leader of the firm’s Multi-Family Office (MFO) and Virtual Family Office (VFO) Practice. The MFO Practice manages the wealth and finances of high-net-worth families and their closely-held businesses and investments. The VFO Practice employs the experience, expertise, contacts, and connections from the MFO Practice to create a collaborative group of professional advisor services.

Calhoun also specializes in assisting not-for-profit organizations and charitable foundations — combining her talent for business and tax issues with her desire to contribute and support causes in the community.



**POLINA CHAPIRO**

Partner  
Green Hasson Janks

Polina Chapiro is a member of Green Hasson Janks’ Executive Committee, International Tax Practice leader and has more than 35 years of tax experience. She is a well-known leader in tax on an international level. She has deep expertise in the areas of corporate reorganizations, mergers and acquisitions, taxation of multinational companies (foreign tax credit, structuring, repatriation planning), partnership and S-corporations taxation, income tax provisions, tax audits at the federal and state level and negotiations with the IRS, state and foreign tax authorities.

Chapiro has been instrumental in the firm’s eminence both domestically and internationally. Known as a preeminent international tax specialist, Polina has been able to service clients with multinational operations allowing Green Hasson Janks the opportunity to work with companies and industries that have expanded along with the globalization of the economy. She routinely advises companies in the private equity, manufacturing, technology and entertainment space.



**ALEXANDRA CHERNYAK**

Partner  
Miller Kaplan

Alexandra (Alex) Chernyak has 20 years of public accounting experience, focusing primarily on labor organizations and employee benefit plans. Her expertise includes audit and accounting services, Agency Fee/Financial Core Payer/Beck Reports. She is responsible for a full range of services, including managing Department of Labor Reports, and Federal and State Information Returns. She handles engagements with many of our larger, more complex labor organizations.

Chernyak’s ability to continue serving her clients – without interruptions – during a global pandemic is just the latest example of the continuity of service she has always provided. Over the years, clients have come to know that they can count on her to deliver results – on time – and this year has been no different. Internally, Chernyak’s leadership is equally valued. As co-chair of the firm’s HR committee, she helps promote an effective work/life balance and mentors staff on how to simultaneously and successfully manage their responsibilities to their clients, the firm, and themselves.

The Partners & Associates of Bessolo Haworth CPAs  
Are honored and proud to congratulate our partners,  
**PEGGY CLARK & SASHA BALUKA**  
On being named among the Los Angeles Business Journal’s  
Influential Women in Accounting of 2020.



PEGGY CLARK



SASHA BALUKA

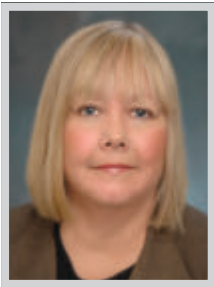
**BESSOLO | HAWORTH**

LOS ANGELES | SAN FRANCISCO | SEATTLE

Accounting & Auditing | Tax Planning & Preparation | Financial Planning | Business Advisors

MAIN OFFICE: 15060 Ventura Blvd., Suite 240, Sherman Oaks, CA 91403 • bhcpagroup.com • (818) 493-6650

WOMEN OF INFLUENCE: ACCOUNTING



PEGGY CLARK

Partner  
Bessolo Haworth CPAs LLP

Peggy Clark has more than 30-years of experience as a public accountant. She is a founding partner of Sherman Oaks-based CPA firm, Bessolo Haworth LLP, which formed in 2007. As a partner with Bessolo Haworth, Clark is responsible for leading the firm's operations, administration, staff recruitment, firm growth and is also responsible for managing her own audit and tax clients.

Clark has numerous unique qualities. She has a passion for the profession and is client-centric. As a founding partner of Bessolo Haworth, her banking experience proved invaluable as the firm planned its start-up and its many operational considerations. While still managing her own client base, she was instrumental in setting up the firm's administration and operational functions. These functions included setting up processes for financial operations, bank relationships, human resources, obtaining business insurance and also introduced the other partners to an alliance with a large national firm for additional resources.



VALERIE COLIN

CPA, MST, Executive Vice President  
Gumbiner Savett, Inc.

Valerie Colin joined Gumbiner Savett Inc. in 1994. She took over the position of Tax Department leader in January 2020 and is a senior tax shareholder with over 30 years' experience in tax, accounting and business consulting. She helps her clients optimize their tax situations with an emphasis on recognizing income, maximizing deductions and available employment credits and other incentives such as R&D credits and manufacturing deductions. Her specialties include estate planning, tax compliance, management and financial consulting, personal financial planning, and financing of businesses and mortgages.

Colin's recent successes for her clients include saving an estate over \$2.5 million in GST tax. She also helped a client with the structure and negotiation of the sale of their business. Her advice saved the acquirer over \$4 million in depreciation and amortization deductions and the seller hundreds of thousands in employment taxes and income taxes.



BRANDY DAVIS

Partner in Charge - Entertainment Sports & Media  
MGO

Brandy Davis has over two decades of managing the financial and business needs for high net worth individuals in entertainment. Past and current clients include Academy Award, Golden Globe and Emmy award winners in the top 3% of film and television. She has been named a Top Elite Business Manager for several years by both The Hollywood Reporter and Daily Variety.

Specializing in business management and taxation needs for entertainment and high net worth individuals, Davis has been in the top ranking of industry wealth management for several years and her clients rank among the top tier in entertainment. While helping achieve their personal financial goals, Davis is an advocate of financial literacy and guides her clients in making informed investment decisions and managing their day to day financial affairs. She is an expert in tax planning, estate planning, budgeting, and risk management and consulting for high net worth individuals.



CRYSTAL DO

Director  
Armanino LLP

Crystal Do serves as a director in Armanino LLP's Business Management and Family Office Services Group. Do brings to Armanino and its clients more than 10 years of experience and specializes in taxation of high net worth individuals and their closely held entities. She brings distinction to the firm and serves the business and financial needs of high net worth families on all aspects of their lives including financial reporting, cash planning, divorce support and assistance, as well as wealth preservation, estate and trust planning and administration, and tax planning.

Earlier this year, Do was tapped to serve as a key leader to help Armanino develop, launch and recruit staff for its Center of Excellence (COE), located in Boise, which is staffed by 35 tax professionals. Armanino's COE is an organizational structure designed to promote standardization and governance in order to provide scalable operational support across the organization.



Gursey | Schneider

LLP

CERTIFIED PUBLIC ACCOUNTANTS & ADVISORS

Century City ■ Irvine ■ South Bay ■ Encino ■ San Francisco

Congratulations on being a woman of influence

Tracy Farryl Katz, Esq., CPA

Proudly leading us into the 21st Century as  
the only Top 100 Firm\*  
with a majority of female partners!



Alex Peais



Kristen Gillespie



Christina Humason



Tina Fujisaki



Tracy Katz



Natalie Murvin



Marie Ambrosino

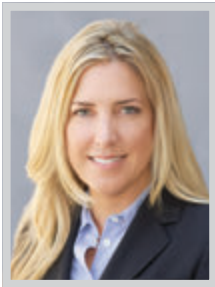


Naz Afshar

\* Gursey | Schneider LLP is ranked a U.S. Top 100 Firm per Inside Public Accounting (IPA)



WOMEN OF INFLUENCE: ACCOUNTING



**KELLEY GASTINEAU**  
*Director*  
B. Riley Advisory Services

Kelley Gastineau has 20 years of experience consulting clients in the areas of forensic accounting, fraud investigations, litigation consulting and corporate bankruptcy and restructuring. Over the course of her career, Gastineau has become a leading professional in damages and lost profit analysis, internal investigations, forensic accounting, royalty audits, fraud investigation, Ponzi schemes, white collar crime, intellectual property disputes and litigation support.

Also contributing to Gastineau’s breadth of knowledge is her experience quantifying data breach damages where she conducts dark web research and analyzes data to value various types of personal identifying information.



**JENNIFER HANG**  
*Senior Manager, Assurance Services*  
RSM US LLP

Jennifer Hang is a senior manager for assurance services at RSM in Los Angeles. With over 13 years of accounting experience, Hang provides services to a number of private companies in various industries including consumer products, restaurants, apparel, manufacturing, distribution and logistics services. She has extensive experience with developing the audit strategy and timeline, including, planning and performing financial audits, including the supervision of training of personnel in completing these engagements.

In her role, Hang manages the entire audit process, including the development and implementation of the strategy, reviewing accounting policies and controls, as well as advising management of any accounting and internal control issues identified. She has been the lead for financial statement audits, including managing the international coordination for audits of subsidiaries overseas and for companies with numerous domestic entities.



**CORAL HANSEN**  
*Managing Director*  
B. Riley Advisory Services

Coral M. Hansen is a CPA with over 29 years of combined public accounting and private industry experience, specializing in providing accounting expertise in engagements involving forensic accounting, litigation support, expert witness testimony, and fraud investigations. She is experienced in consulting with clients and counsel on complex business disputes involving the investigation, evaluation and quantification of economic damages.

Over the course of her career, Hansen has performed hundreds of analyses including probate and estate disputes, post-acquisition claims, breach of contract, royalty disputes, lost profits, bankruptcy and insolvency, intellectual property, real estate and construction, personal injury, professional malpractice, alter ego, account tracing, fraud and internal investigations. Hansen has been designated as an expert witness and has testified in numerous trials, depositions and arbitrations and has been qualified to testify in Superior, Federal and U.S. Bankruptcy court cases.



**KAREN JONG**  
*Partner, Tax Services*  
RSM US LLP

Karen Jong is a tax partner in the Los Angeles office of RSM. She has more than 30 years of experience in providing federal and state tax consulting and compliance services to both privately and publicly held middle market companies. Jong works with the middle market leaders to learn about their business operations and challenges to identify tax opportunities to increase profits to their bottom line. She serves clients in a wide range of industries including manufacturing, wholesale distribution, aerospace, logistics, consumer products, technology, and media.

Jong has developed a reputation for being a master of juggling many activities and making it all look easy. In a given day, she expertly serves clients, develops RSM’s talent, dedicates her time to the community, works on practice development and makes time for her family.

Appraisal & Valuation Services

Forensic Accounting & Litigation Support

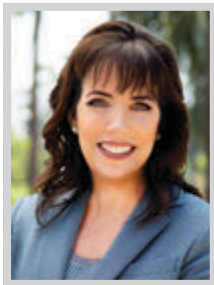
Restructuring & Turnaround Management

Transaction Support

that Kelley Gastineau and Coral Hansen were named to the Los Angeles Business Journal’s 2020 Women of Influence: Accounting. Our professionals - here in California and around the country - are proud to be recognized as leaders and experts in our industry. We’re thrilled to count Kelley and Coral among the esteemed group of women being honored. Congratulations to you both.

**GLASSRATNER IS NOW B. RILEY ADVISORY SERVICES**  
New Name. Broader Platform. Same Exceptional Team.

WOMEN OF INFLUENCE: ACCOUNTING

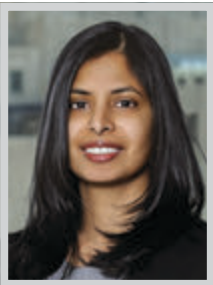


TRACY KATZ

Partner  
Gursey | Schneider LLP

Tracy Katz is a partner at Gursey | Schneider LLP (Gursey) and is the practice leader in the firm's litigation support department. Katz has enhanced the firm's reputation in a specialty started by the firm's founder; today Gursey is the leading family law forensic accounting firm in California. Her clients include high-net worth individuals and well known celebrities in the film, television and music industries.

Katz has been a leading contributor to the firm's growth and success. Through her focus on technical expertise and long-term relationships, she has established herself as one of the most sought-after forensic accounting expert witnesses in family law. In 2014, the American Academy of Matrimonial Lawyers (AAML) Foundation's Forensic & Business Valuation Division admitted Katz as one of only 28 Charter Members from across the nation and only one of two from the state of California.

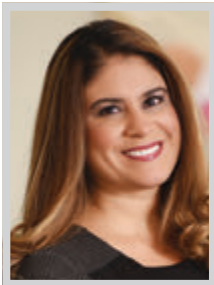


GIBI LAPPIN

Managing Director, International Tax  
KPMG LLP

Gibi Lappin is a managing director in KPMG's Los Angeles International Tax practice. Her 16+ years of both Big 4 and industry experience includes advising multinational clients on U.S. outbound and inbound transactions, international reorganizations, and attendant compliance matters. Lappin regularly advises clients in the technology, retail, engineering and construction, medical device, and life science industries. She has led a number of multinational tax consulting projects, including assisting clients with effective tax rate and cash tax planning, supply-chain and intellectual property planning, cross-border M&A, tax efficient financing and refinancing, Income tax treaty analysis, and foreign tax credit and foreign source income planning.

In addition to her work for clients, Lappin has also taught International Tax for Loyola Marymount University's MS in Accounting program, and lectured at various internal KPMG Seminars as well as with various education providers such as Tax Executives Institute and the LA Treasurer's Club.



KARLA CHAVEZ LUNA

CPA, MST, Shareholder  
Gumbiner Savett, Inc.

Karla Chavez Luna joined Gumbiner Savett in 2000 and has steadily risen through the ranks of the tax department to become the firm's first Latina shareholder as of January 2019. Luna works extensively with high-net-worth clients to guide them through the process of optimizing their income tax positions and decreasing their tax liability to help preserve the wealth that they have worked for. Her specialty lies in the areas of tax planning, consulting and compliance for privately held companies (corporations, S corporations, and partnerships), trusts and estates, and high-net-worth families and their entities.

Luna is heavily involved in the tax department's operational and culture-building activities. Since becoming a shareholder at the firm, she has been working diligently to grow her tax practice and has an 80% close rate with new clients. She enjoys guiding junior staff in their careers and currently mentors six individuals and advises many other practitioners at the firm.



JENN MCCABE

Partner  
Armanino LLP

Jenn has more than 25 years of business outsourcing experience, with a particular expertise in startups and the advertising and creative production industries. She is passionate about helping small and mid-size companies scale by utilizing a team of specialists focused on the clients' long term success.

An advocate for women in accounting her whole career, she plays a central role in the firm's Women's Advancement Network and helped found the Executive Access Program (EAP). The program provides high-potential female account professionals with access to firm executives earlier in their careers to help them understand the path to partnership and recognize the benefits of partnership. In four of the past five years, nearly a third of all new promoted partners are women, and McCabe is proud to have played a part in that trend. While these are significant gains, she continues to ensure her team will always strive to do better.

The power of you.  
Empowered by us.

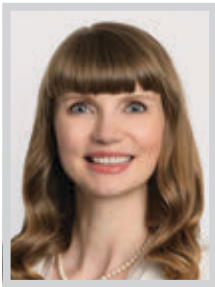
We are proud to support the powerful contributions made by Brianne Wiese, Gibi Lappin, and Sally Wong, and congratulate all the Women of Influence in Accounting.

kpmg.com





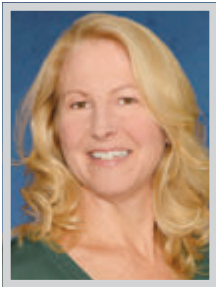
WOMEN OF INFLUENCE: ACCOUNTING



**TANYA NELSON**  
*Senior Manager*  
Moss Adams

Tanya Nelson is a senior manager at Moss Adams and has practiced public accounting since 2007. She provides assurance services to companies in the technology, manufacturing, consumer products, retail, and professional services industries. She has extensive experience serving multinational clients, executing multi-location audit engagements, and conducting Sarbanes-Oxley Act 404 audits. Her experience also includes complex debt restructuring, convertible debt, stock-based compensation, and multiple-element arrangement revenue recognition.

As an expert in the technology field, Nelson leads the firm's Southern California Technology, Communication and Life Sciences industry training programs. Driving the selection of content, design, and execution of the program, she invests in new team members by instilling skills that intersect what is unique in the technology industry and the accounting standards that follow. She also serves as the leader of the firm's technology safety committee.



**PATRICIA O'CONNELL**  
*Partner and Chief Operating Officer*  
Holthouse Carlin & Van Trigt LLP

As COO of Holthouse Carlin & Van Trigt LLP, Patricia O'Connell leads many of the firm's strategic and operational initiatives, including many that are transformational to the organization. In leading these projects, she identifies the root causes of process inefficiencies and welcomes ideas and solutions from team members regardless of tenure. As a collaborative, pragmatic, and approachable leader, she sets the right tone at the top.

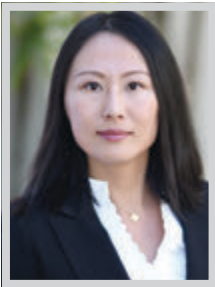
As a member of the firm's executive committee, O'Connell is helping to shape the future of HCVT, addressing technology, virtual/remote work arrangements, privacy, security, attracting, developing, and retaining the right people, continuing to provide value to clients and providing a work environment where all can thrive. O'Connell is a member of the Women @ HCVT, the firm's initiative that is building a work environment that helps to empower, promote, and retain the women of HCVT.



**KELLY O'NEIL**  
*Lead Managing Director and Shareholder*  
CBIZ MHM

Kelly O'Neil is a lead managing director at CBIZ MHM, LLC and a Shareholder at Mayer Hoffman McCann P.C. (MHM). With more than 20 years of experience, O'Neil's expertise is providing audit and consulting services to life sciences, technology, manufacturing and distribution, construction and real estate, and defense contractors for both public and large, privately-held companies (including many backed by private equity and venture capital firms).

O'Neil has a strong understanding of business processes and has been instrumental in developing solutions for corporate management on various accounting matters, with a significant focus on compliance, operations and internal control environments and the related financial statement impacts. She specializes in revenue recognition, business combination and purchase accounting, accounting for stock-based compensation, equity and debt instruments, derivatives accounting, and general business consulting, enabling her clients to make informed decisions on financial reporting matters.



**HELENA SONG**  
*Principal*  
Gumbiner Savett, Inc.

Helena Song has been with Gumbiner Savett Inc. for 12 years and was promoted in July 2019 to audit and accounting principal. With over 14 years of experience, she works with both privately held entities and SEC registered companies in various industry and sectors. Song assists her clients in addressing their accounting issues and auditing needs and values the relationships built and the experiences gained along the way.

Song has extensive experience in leading financial statements audits, due diligence and special reports. She specializes in the real estate industry and handles large audit engagements for real estate investment funds, residential and commercial real estate builders and operators. She also works with many clients in other industry sectors such as private equity, technology, manufacturing and distribution. Song is a sought-after mentor among the younger staff who view her as a source for honest and thoughtful career advice.



We are honored and proud to congratulate our Managing Directors, Cheryl A. Calhoun and Kelly O'Neil, on being named among the *Los Angeles Business Journal's* Women of Influence: Accounting!

ACCOUNTING | TAX | ADVISORY  
www.cbiz.com | www.mhmcpa.com | 310.268.2000

MHM (Mayer Hoffman McCann P.C.) is an independent CPA firm that provides audit, review and attest services, and works closely with CBIZ, a business consulting, tax and financial services provider. CBIZ and MHM are members of Kreston International Limited, a global network of independent accounting firms.



**Cheryl A. Calhoun**  
Tax & Business Management  
Managing Director



**Kelly O'Neil**  
Managing Director &  
Attest Practice Leader



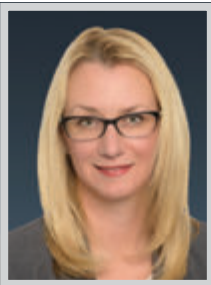
WOMEN OF INFLUENCE: ACCOUNTING



**NICOLE STAN**  
*Director*  
CohnReznick

Nicole Stan is a director in CohnReznick’s Los Angeles office with more than 15 years of experience in public accounting. Her clients, who come from many different industries, rely on Stan for her deep audit and accounting knowledge. But what makes her a truly influential woman is her commitment to her communities – both inside and outside of CohnReznick.

Stan is passionate about advancing the careers of women in the field of public accounting and in the broader business community. In the past year, she was appointed co-leader of CohnReznick’s Executive Women’s Forum (EWF) program in the Los Angeles metro area. EWF is a committed platform created to help women inside and outside of CohnReznick connect with other business women, expand their networks, and improve their professional knowledge and skills. She is also a leader for the firm’s Southern California WomenCAN program.



**NATALIE TRONKINA**  
*Principal*  
CohnReznick

Natalie Tronkina is a principal in CohnReznick’s Transactional Advisory Services practice, based in the Los Angeles office. She has more than 15 years of experience serving private equity funds, lenders, and strategic buyers and sellers, focusing primarily on the due diligence process that is a critical component of any major business transaction.

Early on, Tronkina was identified as an emerging leader within CohnReznick and was elected to the firm’s partnership in February of this year. She is a past winner of the Firm’s PYRAMID award which celebrates the core values of CohnReznick and recognizes those employees who embody these values in their service to the firm, to its clients, and to the community at large. She is committed to initiatives that drive value for her clients and her co-workers and has developed strong, lasting relationships with many different private equity firms based on the consistent quality of her work.



**BRIANNE WIESE**  
*Managing Director, Audit*  
KPMG LLP

Brianne Wiese is a managing director in KPMG’s Public Sector practice. She has over 17 years of experience providing financial statement and compliance audits primarily in the not-for-profit and government industries. Wiese is the lead managing director in KPMG’s Los Angeles Public Sector Audit Practice, and serves as a resource to all of our practice members on accounting, reporting and auditing matters impacting the public sector. Most recently, Wiese has worked with her clients to implement the CARES Act, helping them navigate through the rules and secure funding during these unprecedented times.

Wiese has multiple leadership roles within KPMG, including the co-chair of KPMG’s Network of Women (KNOW) Business Resource Group in Los Angeles. In this role, she oversees training and development initiatives for KPMG’s female professionals, hosts support groups for working mothers, and provides a community for KPMG’s female clients to connect.



**DONELLA WILSON**  
*Partner*  
Green Hasson Janks

Donella Wilson leads Green Hasson Janks’ Nonprofit Practice and has more than 20 years of public accounting experience providing audit, accounting and special project services and works exclusively in the nonprofit sector. A leader in both the nonprofit and accounting communities, Wilson is an outspoken leader of women in the community, both at GHJ and in her philanthropic efforts.

Wilson also serves as the President and Chief Philanthropy Officer of the recently launched GHJ Foundation. She is also an active member of GHJ’s Women’s Empowerment Committee, focused on bringing mentorship events, programs and thought leadership to her colleagues and the community. She is a strategic partner in shaping Green Hasson Janks’ formal mentoring program with the firm’s Human Resources Department. To lead by example, she systematically mentors those at the firm with more difficult career issues ranging from first-time leaders struggling with work/life balance, to those with questions on technical specialization.



Join the Community of Business™

Your exclusive membership will give you access to comprehensive news and analysis of the local business community, through our weekly print issue and with online digital access – any time, any place.

SUBSCRIBE TODAY

[labusinessjournal.com/subscribe](http://labusinessjournal.com/subscribe)

LOS ANGELES BUSINESS JOURNAL  
Reaching more than 250,000 Los Angeles Business Leaders

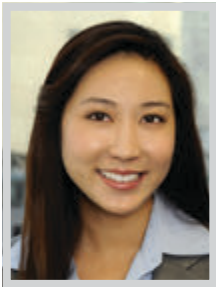


WOMEN OF INFLUENCE: ACCOUNTING



**DARCY WILSON-JONES**  
*Partner, Media and Entertainment*  
*National Sector Leader*  
**RSM US LLP**

With over 20 years of experience, Darcy Wilson-Jones is an Assurance Services partner in the Los Angeles office and the National Media and Entertainment practice leader for RSM. Her audit experience includes serving clients in the broadcasting, media and entertainment, manufacturing and distribution services. As partner and relationship leader, she has extensive experience addressing various accounting issues, including revenue recognition, share-based compensation and business combination accounting. She is primarily responsible for the overall audit quality and assuring that professional standards are being complied with through the audit engagement. Her private clients are generally private equity or venture capital-backed companies at varying stages, from pre-revenue to mature global companies. Wilson-Jones is a member of the firm's Client Experience national advisory group charged with leading the firm's First-Choice Advisor Journey to enable engagement teams to build strong client relationships.



**SALLY WONG**  
*Director, Accounting Advisory Services*  
**KPMG LLP**

Sally Wong is currently a director in KPMG's Accounting Advisory Services practice with 13 years of experience in assurance and advisory. Wong provides accounting and financial reporting advisory services under U.S. GAAP and IFRS focusing on accounting change, merger & acquisition transactions, complex capital raising and financing structures, financial instruments and derivatives across all industries with a focus on technology and emerging growth companies. Wong has worked on numerous global and cross-functional project teams in a variety of roles, including project coordination, staff supervision, workstream leader and technical advisor. While she serves a global client base of various institutions across varying industries, her focus has been on clients in the technology and emerging growth companies. She is the Venture Capital Advisory leader for Los Angeles, and leads recruiting efforts for the Deal Advisory practice.



**CHRISTY WOODS**  
*Partner-in-Charge, Tax & Accounting Services -*  
*Long Beach*  
**Windes**

Christy Woods began her public accounting career in 2006, after graduating Cum Laude from The University of Arizona with a Bachelor of Science in Accounting. She joined Windes in 2011, earning her Master of Science in Taxation while working full-time. In 2018, Woods was promoted to partner in the firm's Tax & Accounting Services Department and is currently the partner-in-charge of tax and accounting operations for the firm's Long Beach headquarters. Woods serves a wide variety of clients in the real estate, construction, and professional services sectors, as well as high-net-worth individuals. Her practice focus is tax planning, consulting for large, mid-size and small businesses, as well as tax compliance for corporations, partnerships and LLCs. She has extensive expertise with Opportunity Zone programs, 199A Rental Income Deduction, and cost segregation. She also assists clients in mergers and acquisitions with tax efficient structure planning, along with tax due diligence and post-transaction services.



**ANITA WU**  
*Principal*  
**Green Hasson Janks**

Anita Wu has more than 20 years of auditing experience, with a specialty in profit participation audits. An experienced accountant in the entertainment industry, she is a regular speaker and writer and was a co-author for the firm's entertainment and media whitepapers. Additionally, Wu enjoys working with innovators and pioneers in the entertainment industry and collaborating with clients as a means towards getting the best results. She is also a leader of Green Hasson Janks' Women's Empowerment Initiative and a mentor and role model for younger members of the firm. As a pillar of strength and respected leader both in and outside of the Firm, Wu is a leader within the firm's Entertainment and Media Practice and has both served as a speaker at industry events as well as written blogs and other thought leadership on industry trends.

RSM celebrates the power of great people.  
Congratulations Darcy Wilson-Jones, Jennifer Hang, and Karen Jong.

It gives us tremendous pleasure to recognize the achievements of **Darcy Wilson-Jones, Jennifer Hang, and Karen Jong**. Congratulations for being named to the Los Angeles Business Journal's 2020 Most Influential Women in Accounting list.

[rsmus.com](https://rsmus.com)

THE POWER OF BEING UNDERSTOOD  
AUDIT | TAX | CONSULTING

