

CUSTOM CONTENT

APRIL 17, 2023

# WOMEN OF INFLUENCE: ATTORNEYS



**W**ELCOME TO THE 2023 EDITION OF THE LOS ANGELES BUSINESS JOURNAL'S SPECIAL SUPPLEMENT HONORING the LA area's most influential women legal professionals, *Women of Influence: Attorneys*.

There are some particularly stellar attorneys in Los Angeles who happen to be women and we've alphabetically listed some of the very best of them here, along with details about their careers, practices and relevant recent successes they've achieved.

The women covered in these pages have been recognized for exceptional legal skill and achievement across the full spectrum of responsibility, exemplary leadership as evidenced by the highest professional and ethical standards, and for contributions to the Los Angeles community at large.

Congratulations to the extraordinary women included this year and thank you for your contributions to the people and businesses of our region.

*Methodology: The professionals featured in these pages did not pay to be included. Their profiles were drawn from nomination materials submitted to the Los Angeles Business Journal. Those selected for inclusion were reviewed by the editorial department and chosen based on a demonstration of impact made on the profession and on the Los Angeles community.*

## WOMEN OF INFLUENCE: ATTORNEYS

**ELIZABETH (BETH) ACEVEDO**

Shareholder / Director  
Weinstock Manion

Elizabeth (Beth) Acevedo applies a broad background in estate planning, estate and trust administration and tax law to develop customized, multi-generational estate plans for high-net-worth individuals and families. Through the careful crafting of trusts, wills, powers of attorney and health care directives, Acevedo identifies and addresses potential conflicts before they occur while maintaining the clients' interpersonal and wealth transfer goals. Acevedo's compassionate and detailed approach to estate and trust administration matters brings beneficiaries and fiduciaries peace of mind during what can be an emotionally stressful time.

Acevedo has been practicing since 2010 and joined Weinstock Manion in 2017. She earned her Juris Doctor from the University at Buffalo School of Law, and her Executive LL.M. in taxation from New York University. While in law school, she served as note and comment editor on the Buffalo Law Review, and as submissions editor for the Buffalo Public Interest Law Journal.

**KALLEY AMAN**

Shareholder  
Buchalter

Kalley R. Aman is a shareholder in Buchalter's Labor and Employment, Litigation Practice Group, and Hospitality, Restaurant, Food and Beverage Practice Group. Aman specializes in employment litigation and counseling, commercial litigation, and complex and class actions. She represents employers in litigation involving claims of employment discrimination, wrongful termination, sexual harassment, retaliation, wage and hour violations, unfair competition, defamation and misappropriation of trade secrets. Aman regularly counsels employers on wage and hour compliance, terminations, disciplinary matters, harassment and discrimination complaints, and compliance with federal, state and local laws and regulations.

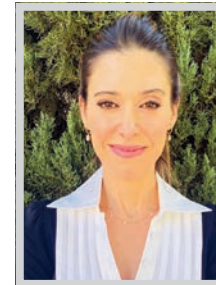
Aman represents clients across a wide variety of industries, including mortgage lending and banking, national restaurant chains, retail, apparel, beauty, manufacturing, artificial turf and real estate. She practices in state and federal courts across the country, and before state and federal agencies.

**SHIVA AMINIAN**

Partner  
Akin Gump Strauss Hauer & Feld LLP

Shiva Aminian is an established leader in Akin Gump's renowned international trade practice—one of only a few such practices in the Western U.S. Renowned for her creative approach to work, she also co-heads the firmwide technology industry group and recently developed an award-winning innovative legal services platform.

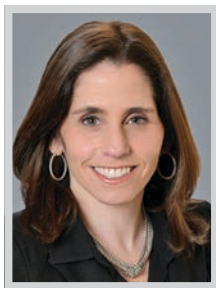
In recognition of her strong leadership qualities, Aminian was called upon to move from Washington, D.C. to Los Angeles in 2016 to play a central role in the firm's trade practice and spearhead the development of the firm's technology industry group. The firm's technology effort marshals the knowledge and skills of the firm's lawyers to navigate a quickly developing legal and regulatory landscape at the intersection of technology, regulation and capital. Aminian is known for her creative solutions, and clients often rely on her to dissect and solve problems and devise and execute effective action plans for their most sensitive matters.

**JESSICA ANVAR**

Founder and Managing Partner  
The Lemon Law Experts

Jessica Anvar's career as a lemon law attorney started when a friend experienced car trouble. Jessica realized through research that there were state and federal laws to protect consumers from being stuck with defective products with no recourse. She started her own lemon law firm to help those who may be in the same situation as her friend.

Anvar is very active in the day to day work of every department of her lemon law firm, even handling all of the marketing up until a few years ago. In addition to her law firm, Anvar is an experienced entrepreneur with various other businesses. Her dedication to consumer protection sets her apart. Her passion for protecting consumer rights is especially evident in her role as the only lemon law attorney on the Consumers Association of California Board of Directors. She uses her platform to advocate for consumers and raise awareness.

**LORYN ARKOW**

Partner  
Stroock & Stroock & Lavan LLP

Loryn Arkow is a partner in Stroock's national Real Estate Group. She has extensive experience handling acquisition, disposition and development transactions; joint ventures, lending and other finance transactions; recapitalizations; and workouts. Clients turn to her for counsel on structuring complex transactions and entities, and in finding creative strategies to get deals done.

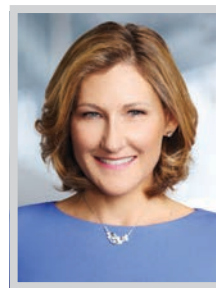
Arkow's representations include matters for JPMorgan Asset Management, Clear Capital, Benedict Canyon Equities, Columbia Property Trust Inc., Fox Corporation, Samsung SRA Asset Management, Hana Alternative Asset Management, Daol Asset Management, Tejon Ranchcorp, Columbia Property Trust and Beach Point Capital Management. She also handled workouts of varying size, including a significant workout on behalf of an institutional landlord involving multiple office buildings and a high-profile tenant relinquishing an entire building. The transaction was complicated by the threat of potential bankruptcy. Arkow also helped clients in several matters with construction projects gone bad.

**L. ASHLEY AULL**

Partner  
Munger, Tolles & Olson LLP

An experienced trial and appellate strategist, L. Ashley Aull spent nearly a decade in the largest U.S. Attorney's Office in the country—leading the office's Criminal Appeals Section—before returning to private practice to litigate business-critical and crisis cases. During her time in government, Aull rose to national prominence, ultimately receiving the Department of Justice's highest award for prosecutors for her work coordinating the national response to the COVID-19 crisis.

Aull now represents companies—particularly technology companies—in their highest-stakes trials, including patent and other intellectual property cases. Immediately after returning to private practice, Aull successfully represented a Fortune 100 technology company in a billion-dollar arbitration. She served as co-lead trial counsel. She has also represented PNC Bank, one of the largest banks in the United States, in high-stakes patent litigation in the Eastern District of Texas—successfully limiting damages awarded in multiple patent-infringement lawsuits filed by another bank.

**KERI CURTIS AXEL**

Partner  
Waymaker LLP

Keri Curtis Axel practices white-collar criminal and government enforcement defense, and civil litigation. A former federal prosecutor and SEC enforcement attorney, Axel is a first-chair trial lawyer who helps clients navigate government investigations and charges and has successfully litigated and argued many Ninth Circuit Appeals. Axel also draws on her extensive experience in tax, accounting, and the securities industry in representing executives, entrepreneurs, and financial services professionals and companies in FINRA matters and civil litigation. She regularly provides insight into criminal and SEC investigations for the national media.

Among Axel's recent matters, she represents former Dodgers outfielder Yasiel Puig who faces federal charges arising out of a sports gambling investigation. In December 2022, Puig withdrew from an agreement to plead guilty to a single count of lying to federal authorities. Axel said in November that "significant new evidence" had prompted Puig's withdrawal. The case has received significant media coverage.

**SABRINA A. BELDNER**

Partner; Labor & Employment Department Chair  
McGuireWoods LLP

Sabrina A. Beldner's influence is evident in the results she delivers for her clients, the reputation of the national labor and employment practice she chairs and the impact of her leadership in McGuireWoods' diversity and inclusion initiatives. She has chaired McGuireWoods' Labor & Employment Department since 2020. Under her leadership, the firm has consistently earned Tier 1 nationwide rankings for employment law and litigation.

All the while, Beldner earned national acclaim for her own work representing employers in high-stakes discrimination, wage-and-hour, and traditional labor litigation. In addition to her class action practice, she has obtained favorable results representing management in collective-bargaining negotiations, grievance arbitrations, unfair labor practice proceedings, and at trial before the National Labor Relations Board. She has represented clients in dozens of grievance arbitration matters involving employee discipline and contract issues and represented employers in single-plaintiff litigation in court and in employment arbitration proceedings.



---

# HUESTON HENNIGAN LLP

---

**Congratulations**



**VICKI CHOU**  
**SARA HAJI**

**Women of Influence: Attorneys**  
*—Los Angeles Business Journal*

---

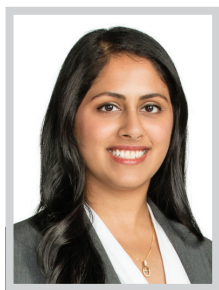
## WOMEN OF INFLUENCE: ATTORNEYS

**KARLA BERENTSEN**

Partner; Chair, Trust & Estates Department  
Hahn & Hahn LLP

**K**arla Berentsen is a partner and chair of Hahn & Hahn's Trust and Estates practice group and handles complex estate planning and trust and estates administration. She has over 20 years of experience.

Berentsen's most successful career accomplishments have come from the connection she has with her clients and the peace of mind that she provides. She takes great pride in her ability to make estate planning concepts palatable and relatively painless. Her clients have sighed in relief when the process is complete, and often share how she made the experience easy on them. Berentsen cares for her clients deeply and loves helping them get their estate plans off of their "to do" lists so they can get back to enjoying their lives. Berentsen is a member of the firm's Executive Committee and is also an active member in the community. She has been on the Board of Directors at Pasadena Humane for more than 10 years and recently rotated off as secretary and member of the Executive Committee.

**JASMIN B. BHANDARI**

Principal; Co-Chair, Labor & Employment Department  
Scali Rasmussen, PC

**J**asmin Bhandari maintains a regulatory and litigation practice primarily focused on labor and employment law. She provides advice and counsel to clients on compliance with state and federal employment laws, including termination and on-boarding issues. She also represents businesses in a broad range of disputes, including discrimination, harassment, wrongful termination, wage and hour, and trade secret matters. Her experience further includes defending companies in wage and hour class actions against meal and rest break, overtime, and timely payment of wage claims, including extensive experience with PAGA cases in both litigation and arbitration.

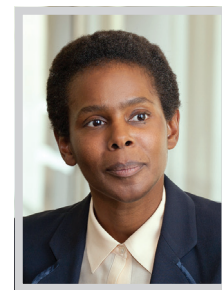
Bhandari has obtained a dismissal of class claims in arbitration, drafted briefs for cases at the California Court of Appeal and successfully brought a motion to dismiss the appeal. Jasmin also has significant experience drafting and revising handbooks, pay plans, break and leave policies, employee surveys and confidentiality agreements.

**IVY KAGAN BIERMAN**

Chair, Entertainment Labor Group  
Loeb & Loeb

**I**vy Kagan Bierman, chair of Loeb & Loeb's Entertainment Labor Group, is among the few entertainment industry labor experts who represent film, television and digital companies, broadcasting and cable networks, public broadcasting companies, distribution companies, brands, advertisers and advertising agencies in guild and union and other labor matters and employment matters.

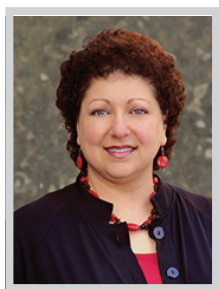
Bierman is passionate about ensuring that clients have good work cultures where everyone feels safe, respected and included. She handles cultural assessments for companies and organizations and strategizes with them regarding developing and maintaining good cultures where everyone can thrive. She also continues to be a "go to" for high profile sexual harassment, discrimination and bullying investigations and trainings. She is also committed to fostering better management and union relations and is setting ground rules for negotiations that require that everyone treat each other respectfully and with civility during negotiations.

**KIM BORAS**

Partner  
Latham & Watkins LLP

**K**im Boras leads the Real Estate Practice at Latham & Watkins in Los Angeles, drawing on over three decades of experience to advise clients on real estate financings, acquisitions and dispositions, as well as major leasing transactions. She represents clients on all sides of commercial real estate matters, including lenders and borrowers, purchasers and sellers, landlords, and tenants in matters involving a variety of asset classes.

Among Boras' long record of achievements with positive impact in Los Angeles, her work to advance the restoration of Exposition Park stands out. Her efforts over more than a decade began with work on the LA Memorial Coliseum ground lease and related documents for USC with the State, the Coliseum Commission, and other Exposition Park stakeholders – and continued through the Coliseum renovations and naming rights agreement, and the temporary license for the Rams use of the Coliseum while SoFi Stadium was being constructed.

**JENNIFER BOROW**

Partner  
Sklar Kirsh LLP

**J**ennifer L. Borow is a partner in the corporate department of Sklar Kirsh LLP with more than 30 years of broad transactional law experience. Borow has represented a wide range of businesses and business owners, including those involved in financial services, media, entertainment and telecommunications, restaurants and hospitality, retail, industrial manufacturing and supply chain, agriculture, and commercial and residential real estate.

Borow has extensive expertise in the structuring and negotiation of complex strategic transactions, including the acquisition and disposition of business assets and the formation, capitalization and governance of joint ventures, partnerships, limited liability companies and other business entities. She has particular expertise in counseling high net worth individuals and family offices in connection with their closely held operating businesses, real estate holdings and other investment assets, including transitioning businesses between generations and sales to third parties, equity recapitalizations and financings.

**SARAH BROOKS**

Partner  
Venable LLP

**S**arah Brooks is a partner in Venable's Intellectual Property Litigation Practice and focuses her practice on intellectual property disputes, including patent and trademark disputes in U.S. District Court and before the USPTO. She also serves as Venable's Los Angeles office hiring partner and, through her work as chair of the hiring committee, enjoys mentoring young lawyers.

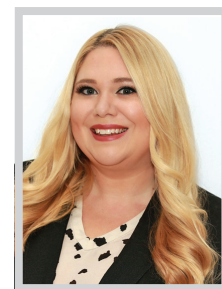
Brooks also volunteers for Public Counsel and provides pro bono work in children's rights, immigration, and guardianship matters. She was on the board of the Los Angeles Intellectual Property Association for eight years and served as its president from 2019 to 2020. She currently serves as judge pro temp in LA Superior Court through the LA County Bar Association. Brooks also led the Venable team that co-counseled with the ACLU and Civil Rights Corp., achieving a historic settlement in a litigation pending in the Eastern District of Louisiana against District Attorney Leon Cannizzarro.

**PATRICIA BRUM**

Partner  
Snell & Wilmer

**P**atricia Brum is a partner in the Los Angeles office of Snell & Wilmer, a full-service business law firm. Brum, a Brazilian native, is a business litigator with extensive experience in representing companies (both large and small) in cross-border disputes and consumer class action matters. She is a strong advocate for the advancement of women attorneys in the legal profession and was recognized for her mentorship of women attorneys by receiving Snell & Wilmer's Mentor Award in 2021.

Brum is also prominent leader in her community. Through her work in several nonprofit organizations, she advocates for LGBTQ+ rights and art education for children in underserved communities. Prior to becoming a lawyer, Brum worked for more than 15 years as an international trade specialist with a variety of public organizations including the United Nations and Ernst & Young, as well as several private companies.

**SAVANNAH BRUTTO**

Senior Attorney  
RMO LLP

**S**avannah Brutto is an attorney in the Westlake Village and Los Angeles offices of RMO. With extensive experience in trusts and estate litigation, Brutto brings an empathetic and results-oriented approach in representing heirs, beneficiaries, fiduciaries, creditors and other interested parties in litigated probate, contested conservatorship, and financial elder abuse cases at RMO.

Brutto attended California State University Northridge. She studied law at Southwestern Law School, where she received the Witkin Award for Academic Excellence. She is a member of the Beverly Hills Bar Association, Trust and Estates Section; a member of the Los Angeles County Bar Association, Trust and Estates Section; and a member of the Conejo Valley Estate Planning Council.





CORTNEY SHEGERIAN, ESQ



HEATHER CONNIFF, ESQ

# CONGRATULATIONS

To all of the winners of the Los Angeles Business Journal Most Influential Women Attorneys!

**SHEGERIAN CONNIFF LLP**

**LEADING EMPLOYMENT & PERSONAL INJURY LAWYERS**

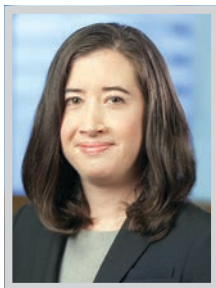
Cortney Shegerian, Esq.  
cs@ShegerianConniff.com  
310-322-7500

25550 Hawthorne Blvd. Suite 310 Torrance, California 90505  
433 N. Camden Dr. Suite 1100 Beverly Hills, California 90210  
8050 N. Palm Ave. Suite 100, Fresno CA 93711

Heather Conniff, Esq.  
hc@ShegerianConniff.com  
310-322-7500



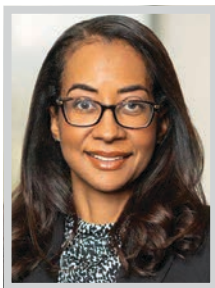
## WOMEN OF INFLUENCE: ATTORNEYS

**JENNIFER BRYANT**

Partner  
Munger, Tolles & Olson LLP

**A** litigation partner based in Los Angeles, Jennifer L. Bryant focuses on high-stakes complex commercial litigation with an emphasis on legal challenges faced by the entertainment and technology industries, including First Amendment, copyright, trade secret and privacy issues. Over the course of her career, Bryant has received several accolades, including being named one of the 500 Leading Litigators in America by Lawdragon and a Best LGBTQ+ Lawyer Under 40 by The LGBTQ+ Bar.

Most recently, Bryant served as co-trial counsel for Vanessa Bryant in her high-profile, landmark civil rights victory against the L.A. County Sheriff's and Fire Department for their improper photographs of the victims of the helicopter crash that killed her husband and daughter, Kobe and Gianna Bryant, as well as seven others. She is also representing Netflix in trial court in securing dismissal under California's anti-SLAPP statute of a putative class action.

**TAMARA BUSH**

Member; Leader, Product Liability and Class Action Litigation Practice Group  
Dykema Gossett

**T**amara Bush is the leader of Dykema's nationally ranked product liability and class action litigation practice group. She is a proficient trial lawyer, representing clients in products liability matters, commercial disputes over contract performance, business torts and trade secrets. Tamara handles matters in federal and state courts across the country, both at the trial and appellate levels. She is a skilled litigation strategist, managing the defense of large-scale class, collective, and multidistrict actions involving high-value product liability, breach of warranty, and statutory claims.

Included in Bush's experience is a substantial amount of work in the defense of product liability actions on behalf of manufacturers, distributors and/or designers of automobiles, trailers, forklifts and other consumer products. She has a strong, active practice with the firm's Automotive Industry Group, which has been recognized as one of the strongest in the nation by The Legal 500.

**MARY CRAIG CALKINS**

Partner, Insurance Recovery  
Blank Rome LLP

**M**ary Craig Calkins has more than 35 years of high-profile insurance coverage experience representing policyholders exclusively in some of the nation's most significant headline-grabbing disputes ranging from directors and officers liability, entertainment/media, wildfires and natural disasters, intellectual property, cybersecurity, and other coverage areas. Often "behind the curtain," she has recovered hundreds of millions of dollars from her clients' insurers.

Calkins was lead coverage counsel for a high-altitude aerospace company in litigation brought by the company's insurer to avoid coverage for an accident. After a suit by the capsule manufacturer, the company's insurer filed a separate lawsuit seeking to avoid duties to defend and pay settlements or judgments. The matters successfully settled in 2022. Calkins is also lead coverage counsel for a multi-media communications company on various matters, including coverage for the highly publicized election machine fraud cases alleging defamatory news reports.

**CHERYL S. CHANG**

Partner & Vice Chair, Financial Institutions Litigation and Regulatory Compliance;  
Co-Chair, Los Angeles Office  
Blank Rome LLP

**A**s Blank Rome's first female Asian-American partner and vice chair of the firm's nearly 50-member Financial Institutions Litigation and Regulatory Compliance practice group, Cheryl Chang is a skilled leader and a formidable litigator. She consistently achieves favorable outcomes for her clients in complex corporate matters.

Chang litigates for significant corporate and entertainment clients before state and local courts in the areas of intellectual property, antitrust, and consumer class action defense. She is recognized by co-counsel and opponents alike for her keen ability to see legal issues and business decisions from her clients' point of view. Fluent in spoken Mandarin Chinese, Taiwanese, and French, she often communicates with her clients, and negotiates with adversaries, in multiple languages. Last year, a team led by Chang successfully defended a global software provider and its foreign parent company in an arbitration action brought by a reseller seeking nearly \$8 million in damages.

**JENNIFER CHANG**

Founder  
Law Office of Jennifer Chang

**J**ennifer Chang is an education rights attorney who is a staunch advocate for the rights of children with special needs in the California public school system. With over a decade of experience in the complex laws of special education, she has had great success assisting students with disabilities and their families to understand and exercise their legal rights and receive the services they are entitled to under the law. Equally important to Chang's practice is helping the families of students with special needs learn to advocate for themselves and their children, and hold the school system accountable when it comes to providing equal educational opportunities.

While the core of her practice focuses on special education law and protecting students with disabilities, Chang is also passionate about educating Korean American families and helping them navigate the complexities of advocating for their children while language poses a barrier.

**CANDICE CHOH**

Co-Partner in Charge of the Century City and Los Angeles Offices  
Gibson, Dunn & Crutcher LLP

**C**andice Choh, co-partner in charge of the Century City and Los Angeles offices of Gibson, Dunn & Crutcher, is a highly talented, impactful and in demand deal lawyer. She has a broad-based practice encompassing mergers and acquisitions across a wide variety of industries and other private equity transactions, including investment fund formation, co-investments, secondary transactions, and investments in sponsors.

Choh regularly counsels private equity sponsors on firm structuring and internal governance matters. Her recent notable transactions include advising Stone Canyon Industries Holdings in the acquisition by Stone Canyon and Kissner Group Holdings minority owner and CEO Mark Demetree of K+S Aktiengesellschaft's Americas salt business, including Morton Salt, for \$3.2 billion. She also advised Hackman Capital Partners in its partnership with Square Mile Capital Management, LLC to acquire CBS Studio Center and its associated operating business from ViacomCBS for \$1.85 billion.

**VICKI CHOU**

Partner  
Hueston Hennigan LLP

**V**icki Chou is a key member of the White Collar and Investigations team. A seasoned trial and appellate attorney, she previously served as a deputy chief in the U.S. Attorney's Office for the Central District of California. Chou secured a unique plea agreement for one of the highest-profile criminal defendants in the "Varsity Blues" college admissions case, a declination for Southern California Edison in the criminal investigation of the deaths caused by the California wildfires, and secured a favorable plea agreement for the former dean of USC's School of Social Work in connection with federal corruption charges in an alleged bribery scheme involving a public official.

Chou is also currently serving as trial counsel in a criminal case alleging that former Outcome Health CEO Rishi Shah and other executives ran a \$1 billion fraud scheme at the Chicago-based company.

**CARLA CHRISTOFFERSON**

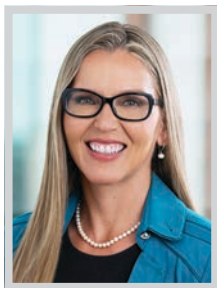
Partner  
King & Spalding LLP

**C**arla Christofferson is an accomplished lawyer with a long and successful record as a leading trial lawyer and litigator. Experienced in all facets of complex business litigation, Christofferson's practice focuses on commercial litigation, consumer class actions, Proposition 65, unfair trade practices, natural resources, environmental matters, and contract disputes. Her clients have included major players in retail, entertainment, energy, real estate, and accounting.

Christofferson previously served as chief legal officer and a member of the executive leadership team for an international engineering and construction company with 92,000 employees in 72 countries. She was responsible for all legal functions as well as all risk management functions, including ethics & compliance, safety, quality, IT security, security & resilience and government affairs, managing 800 professionals world-wide. She is easily able to put herself in her clients' shoes and help them manage their legal risks and meet their business goals.



WOMEN OF INFLUENCE: ATTORNEYS

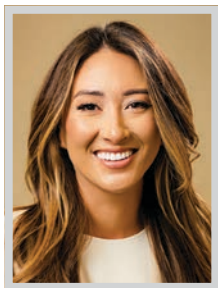


**LARA COMPTON**

Member  
Mintz

Mintz Member Lara Compton is a trusted advisor to clients ranging from traditional health care providers to disrupter digital health platforms as they navigate the practical and regulatory challenges of health care innovation. Her unique depth of knowledge across HIPAA privacy and other regulatory issues governing the use of data, state and federal fraud and abuse laws, business planning and operational issues has led colleagues to describe her as the “Swiss Army knife” of health care problem-solving.

Working at the intersection of health care and technology, Compton loves to counsel telemedicine and other digital health clients on business plan strategy and implementation, state-specific telemedicine regulation, corporate practice of medicine, the scope of practice, fee splitting, anti-kick-back, reimbursement, and other complex health care regulatory issues. Leveraging her prior in-house experience at two nonprofit health systems, she also advises health care providers on the incorporation of telehealth and other technology infrastructures.



**HEATHER CONNIFF**

Partner  
Shegerian Conniff, LLP

Heather Conniff has drafted appellate briefs and argued in front of both Ninth Circuit Court of Appeals and California Court of Appeals. Her practice focuses on employment law and includes all aspects of case management from initiation through trial, with particular emphasis in law and motion, litigation, and appeals. Conniff started a women-owned law firm with business partner Cortney Shegerian in 2018. Shegerian Conniff currently has three employees and has handled hundreds of cases, including the highly publicized sexual assault/harassment case of Doe v. City of Bakersfield.

A magna cum laude graduate of Whittier Law School, Conniff worked for the United States Ninth Circuit Court of Appeals, Staff Attorneys Office, as well as the Department of Justice, Office of the United States Trustee during her law school tenure. Conniff recently arbitrated a pregnancy discrimination case currently pending the arbitrator’s decision.



**DIANE DE FELICE**

Shareholder  
Brownstein Hyatt Farber Schreck

Diane De Felice offers her clients – developers, investors, cities and other private sector clients – land use and environmental law counsel, with proven litigation skills that get results. She stands out in her field because of her deep understanding of public agency administrative processes allowing her to streamline complex environmental issues entwined with land use and planning matters. This ensures her clients’ projects get built utilizing her industry-leading experience with the California Environmental Quality Act, National Environmental Policy Act and Subdivision Map Act as well as the Coastal Act critical to a project’s viability in California’s extremely complex regulatory environment.

De Felice’s successful career accomplishments highlight her expertise in topics at the forefront of land use, public policy and housing equity and climate change issues. This includes representing a nonprofit affordable housing organization in Southern California against a homeowners association challenging a 40-plus-unit affordable housing complex.



**JAN DODD**

Shareholder  
Carlton Fields

In a career spanning more than three decades, Jan Dodd has tried lawsuits throughout the country in both state and federal courts with an emphasis on litigation surrounding products causing catastrophic injury or death. In one significant defense verdict, she represented the maker of an over-the-counter cold medicine, In Re PPA. In two cases consolidated for a single trial, the plaintiffs asserted they had suffered devastating strokes and sought millions in compensatory and punitive damages. After nearly five months of trial, the jury found in favor of the drugmaker on all counts.

In one recent matter, a global diversified manufacturing company, asked Dodd to defend the company less than 90 days before trial in a case involving a personal injury. She took the lead and was able to convince the jury to return a full defense verdict for Dodd’s client.

ERVIN COHEN & JESSUP LLP

WWW.ECJLAW.COM

9401 Wilshire Boulevard  
12th Floor  
Beverly Hills, CA 90212

310.273.6333

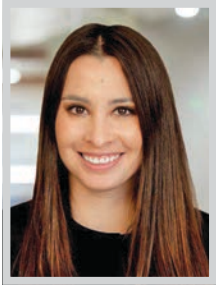
CONGRATULATIONS TO OUR PARTNERS

Joan Velazquez & Pantea Yashar

Los Angeles Business Journal 2023 Women of Influence



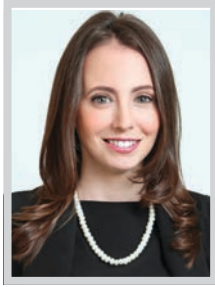
## WOMEN OF INFLUENCE: ATTORNEYS

**ANET DRAPALSKI**

Partner  
Fisher Phillips LLP

Anet Drapalski serves as a key advisor to employers across California in a diverse group of industries, including technology, hospitality, fashion, financial services, music, and emerging companies. She defends employers against a wide range of employment law claims, including disability, race, age, and gender discrimination, sexual harassment, retaliation, and unlawful termination of employment. She also defends employers against wage and hour class action claims and representative claims under the Private Attorney General Act.

Drapalski serves as the go-to source for Fisher Phillips' Southern California attorneys to assist Latin American clients seeking to enter the U.S. market. She works tirelessly to prevent litigation by providing preventative counseling for employers. This includes updating and providing advice regarding the status of California's many changing laws, sound personnel policies, sexual harassment and human resources training, implementation of leave policies, employee defection and trade secrets, employee classification, and compliance with workplace regulations.

**KATHRYN EDGERTON**

Member  
Mintz

Mintz member Kathryn Edgerton is known for providing practical, business-focused guidance, to health care providers and businesses who serve them, including hospitals, physician organizations, behavioral health providers, telemedicine providers, laboratories, home health providers, and medical spas. With a focus on addiction treatment and behavioral health, she has counseled over 100 addiction treatment providers on day-to-day health care operations.

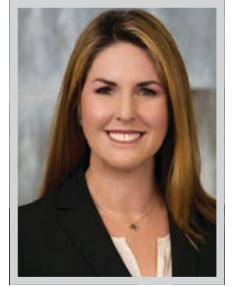
Edgerton counsels clients on compliance with the Eliminating Kickbacks in Recovery Act of 2018, the federal Anti-Kickback Statute, the physician self-referral and payments law, California unfair competition law, and other health care regulatory laws and regulations. Edgerton applies her deep healthcare regulatory knowledge when representing clients in state and federal government investigations and in response to investigations by insurance companies. Her transactional experience includes serving as health care regulatory counsel to private equity firms and other investors in mergers, acquisitions, and other transactional matters.

**ELINOR EIZDI**

Partner, Real Estate Group  
Nossaman

Elinor Eizdi specializes in real estate transactional law. She has extensive experience representing government agencies, real estate developers and independent oil and gas companies in all phases of real estate acquisitions and dispositions as well as construction, leasing and financing. She assists them with myriad issues pertaining to real property, right-of-way, the Surplus Land Act, oil and gas assets and mineral rights.

Eizdi handles all aspects of real estate negotiations. She drafts and negotiates purchase and sale agreements, leases, deeds, easements, access agreements, and related documents. She performs due diligence and extensive title review. She also advises on unusual real estate issues as they arise, including utility relocations and wells, and she researches and analyzes environmental constraints and impacts on future development. Previously, Eizdi was a law clerk at a Los Angeles-based law firm and served as a judicial extern to the Honorable Ellen Carroll.

**RACHEL FISET**

Managing Partner  
Zweiback, Fiset & Zalduendo LLP

Rachel L. Fiset is a co-founder and managing partner of Zweiback, Fiset & Zalduendo LLP. Her practice includes various state and federal civil and white-collar criminal matters, including government and internal investigations. She has achieved outstanding results for individuals accused of healthcare fraud, political corruption, bribery, SEC violations, real estate investment fraud, environmental violations, import/export violations, money laundering, copyright infringement and theft of trade secret.

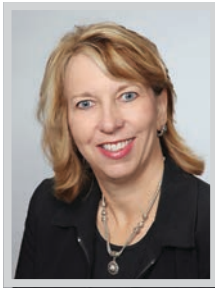
Since forming Zweiback, Fiset & Zalduendo LLP in 2018, Fiset has been involved in several of the highest profile government investigations in the Central District of California and, in her civil litigation practice, succeeded at trial, on appeal, on dispositive motions and through settlement on behalf of her clients. She recently obtained a full dismissal during trial on behalf of the inventor of a payment ring technology in a patent assignment case alleging fraudulent dealings defeating claims by the plaintiff of approximately \$30 million.

**SHEILA FIX**

Defined Equity Partner  
Wood Smith Henning & Berman LLP

Sheila Fix is a defined equity partner in Wood, Smith, Henning & Berman Los Angeles office. She concentrates her practice on toxic tort litigation, toxic injury, catastrophic injury, employment, and construction. Fix also manages complicated actions involving sureties, such as claims involving payment and performance bonds, defaults on construction projects, and bonds for the release of mechanic's liens. She has tried over 75 cases, including 20 jury trials, as a partner at WSHB and in the United States Navy Judge Advocate General (JAG) Corps.

Fix has been successful with cases that have gone to trial in the field of construction involving public works initiatives, residential construction, claims involving landslides and subsidence, premises liability, and toxic torts. Additionally, Fix provides advice to owners, builders, and contractors on risk management concerns throughout the entire construction process as well as post-construction commercial property management.

**DEBORAH FOX**

Principal; Chair, First Amendment and Trial & Litigation Practice Groups  
Meyers Nave

Deborah Fox, a member of Meyers Nave's Executive Committee and the founder and leader of the firm's Trial & Litigation and First Amendment practice groups, is one of California's leading experts on First Amendment issues. She has expertise with cases involving the convergence of First Amendment, land use, and zoning laws. She is highly sought-after for high-impact litigation and crisis management and her constitutional work typically involves complex cases with overarching social justice components.

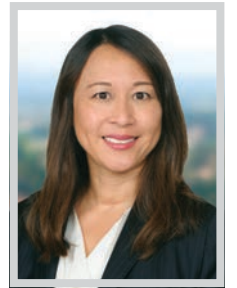
Fox has recently been at the epicenter of several California cases with statewide ramifications. She recently obtained the dismissal of two high-stakes federal lawsuits brought by AT&T and Verizon, respectively, asserting claims against the City of Los Altos under the Telecommunications Act. While the matter was ongoing, Fox led a team of experts to devise a state-of-the-art wireless ordinance for Los Altos that achieved the City's policy objectives while avoiding provisions that were being challenged.

**ELLYN GAROFALO**

Shareholder  
Carlton Fields

Known as a fierce adversary, Ellyn Garofalo focuses on the defense and prosecution of complex civil matters including breach of contract claims, partnership disputes, securities and investor fraud claims, real estate litigation, and other business disputes. In her three decades of courtroom experience, she has tried a wide variety of cases in state and federal courts across the country.

In one notable case, Garofalo obtained a defense verdict as lead trial counsel for multiple defendants in a \$100 million partnership dispute arising from the acquisition of a wellness resort. In another matter, she obtained a \$32 million judgment for cyber theft by a former officer of a digital advertising company. She also obtained a settlement in an international breach of contract dispute involving one of the world's largest produce suppliers. In a recent matter, Garofalo successfully represented the California DUI Lawyers Association challenging the DMV's administrative hearings process.

**VALERIE GOO**

Partner  
Crowell & Moring LLP

For over two decades, Valerie Goo, managing partner of Crowell & Moring's Los Angeles office, has represented some of the world's leading companies in complex litigation involving trademark infringement, unfair competition, trade secrets, false advertising, and consumer class actions. She has tried numerous cases in federal and state courts across the country and holds a successful record in representing clients in commercial litigation and intellectual property matters, including eight- and nine-figure disputes.

Goo currently represents several large companies in fiercely fought intellectual property, commercial disputes, and trade secrets cases between competitors. One example of her recent success is her work on behalf of Lockheed Martin. Goo led the Crowell team in a commercial and trade secrets litigation matter, with rulings constituting a complete defense victory in a lawsuit in which plaintiffs sought over \$500 million in alleged damages.



WOMEN OF INFLUENCE: ATTORNEYS

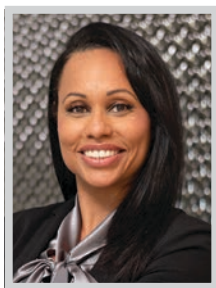


**DEMETRIA GRAVES**

*Founding & Managing Partner;  
Certified Family Law Specialist  
The Graves Law Firm*

Certified family law specialist Demetria Graves opened her own family law practice, The Graves Law Firm, at the age of 25, just six months out of law school. She has offices in both Pasadena and Beverly Hills and is today considered a leading family law attorney and has received many accolades for her dedication to the field of family law as well as to the community.

Graves assists individuals who wish to amicably dissolve their family law matters. She handles custody and visitation, child support, spousal support, property division, the dissolution of same-sex marriages, mediation, all while paying close attention to her clients' needs and concerns in order to achieve the most desirable outcomes. Graves works to ensure that her clients' rights and interests are protected. Graves hosts a weekly podcast, 'Legally Uncensored with Demetria L. Graves' which is available on Apple Podcasts.

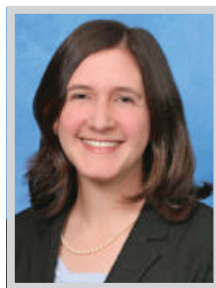


**TANYA GREENE**

*Partner  
McGuireWoods LLP*

McGuireWoods partner Tanya Greene is a respected litigator, an innovative diversity and pro bono champion, and an influential mentor. She works on high-profile, complex litigation for some of the most prominent corporations in the world and manages consumer class actions and complex multi-plaintiff litigation in heavily regulated industries, including finance, technology, aerospace and petroleum. She has led successful legal challenges for homeless and displaced Los Angeles residents. She has also dedicated herself to recruiting and mentoring the next generation of women and minority lawyers.

Greene's achievements include a string of extraordinary successes defending Costa Mesa-based fashion and footwear maker Vans and its iconic "OLD SKOOL" trademark from infringement. In April 2022 she represented Vans in a trademark and trade dress infringement and unfair competition lawsuit against Walmart which granted Vans' motion for a preliminary injunction.



**ELISSA GYSI**

*Partner  
Hill, Farrer & Burrill LLP*

Hill, Farrer & Burrill LLP partner Elissa Gysi specializes in litigation and arbitration of employment, labor, and contract disputes, including the defense of wage and hour, discrimination, harassment, wrongful termination, and accommodation claims. She also represents employers in matters before the Department of Fair Employment and Housing, the Equal Employment Opportunity Commission, the Workers' Compensation Appeals Board, and other federal and state administrative agencies. In addition, Gysi counsels employers on their handbooks and policies, discipline and separation procedures, workplace privacy issues, and compliance with state and federal leave laws.

Gysi received her J.D. from Stanford Law School and was admitted to the California Bar in 2011. During law school, Gysi served as a member editor of the Stanford Law Review and completed a summer externship for the honorable Alex Kozinski, Chief Judge of the Ninth Circuit Court of Appeals.



**SARA HAJI**

*Counsel  
Hueston Hennigan LLP*

Sara Haji focuses on positioning high-stakes business disputes for trial. From pre-filing investigation to post-trial appeals, clients trust Haji to develop effective strategies based on deep familiarity with the federal and state courts. Haji has been key in securing favorable pre-litigation and litigation outcomes for Monster Energy Company, Amazon, Ring, the Navajo Nation and a variety of high-profile individuals.

Haji was a key member of the team that won a record \$293 million verdict for Monster Energy against rival beverage company Vital Pharmaceuticals — the largest Lanham Act award ever — with findings in Monster's favor on every claim asserted. She also served as trial counsel for a real-estate investment executive in an action for breach of fiduciary duty in Los Angeles Superior Court. During law school, Haji was an editor for the California Law Review and a research assistant in the areas of information privacy and civil rights.

MEYER · OLSON  
LOWY · MEYERS  
FAMILY LAW



Congratulations to our esteemed, dynamic partner

**Lisa Helfend Meyer**

for being selected

**2023 Women of Influence: Attorneys**  
by the Los Angeles Business Journal

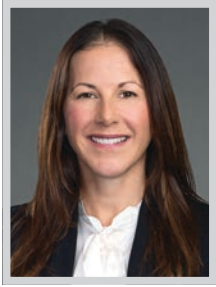
High-Asset Divorce • Complex Marital Estates  
High-Conflict Child Custody • Move-Away Cases  
Prenuptial/Postnuptial Agreements • Cohabitation Agreements

Los Angeles  
10100 Santa Monica Boulevard  
Suite 1425  
Los Angeles, California 90067  
Phone: 310.277.9747

Orange County  
3161 Michelson Drive  
Suite 1160  
Irvine, California 92612  
Phone: 949.397.3977

**MOLMFamLaw.com**

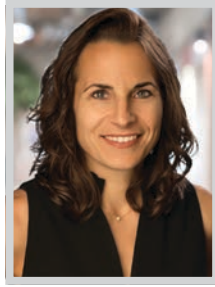
## WOMEN OF INFLUENCE: ATTORNEYS

**CLAIRE HALL**

Partner; Co-Head of Derivatives Group  
DLA Piper

Claire Hall focuses her practice on structured finance and derivatives. Hall represents issuers, underwriters and investors across a broad range of domestic and cross-border structured, warehouse and asset-backed finance transactions covering both public deals and private placements. In recent years, Hall's ABS experience has focused on esoteric transactions such as solar, trade receivables, PACE, management fee cashflows, property developer fees, cashflows from multifamily housing assets and music royalties backed securitizations.

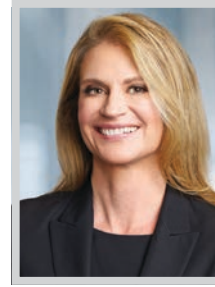
Hall has significant experience representing financial institutions, hedge funds, asset managers, dealers and end users in a variety of derivatives transactions. She advises on regulatory issues affecting derivatives under Dodd-Frank and EMIR. Hall also advises on matters related to the California cap and trade scheme. Hall is currently a co-chair of DLA Piper's LIBOR Transition Practice and co-head of the Derivatives Group. She is admitted to practice in New York, California and England and Wales.

**LAUREN HUDECKI**

Partner  
DTO Law

Lauren Hudecki is a seasoned litigator whose practice focuses on complex commercial and employment litigation matters, including arbitration, mediation, and trial. She has represented commercial clients in various areas, including those involving contracts, consumer class actions, mass torts, and intellectual property. Hudecki is representing American Honda Motor Co., Inc. in three nationwide automotive class actions. Earlier this year, she successfully secured dismissal of a false advertising class action at the pleading stage on behalf of Target. She was also a member of the DTO team representing State Farm Fire and Casualty Company in a putative class action case, which was dismissed without leave to amend.

Prior to joining DTO, Hudecki developed her practice at Cole Pedroza LLP, Quinn Emanuel Urquhart & Sullivan, LLP, and Young Conaway Stargatt & Taylor, where she garnered a vast array of experience, including first and second chairing multiple trials and successfully arguing dispositive motions.

**TERESA HUGGINS**

Partner  
Waymaker LLP

Teresa Huggins handles complex commercial litigation at the trial and appellate level, with an emphasis on intellectual property, fintech and First Amendment matters. A partner at Waymaker LLP, she represents plaintiffs and defendants, and has argued in state and federal court, achieving decisive victories. A Harvard Law graduate and a member of New York's and California's bars, Huggins handles cases on both coasts.

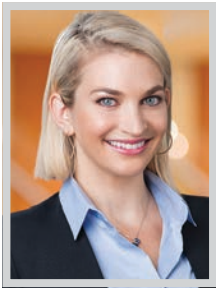
Among her recent matters, Huggins argued successfully before the Ninth Circuit that her client's case should be stayed pending appeal of the underlying foreign judgment in the Cayman Islands. She also successfully defended against a motion to dismiss the complaint of her client, a cryptocurrency investor pursuing claims against a former partner in the Southern District of New York. Huggins handles numerous fintech matters. She recently got another complaint against a cryptocurrency exchange and its founder dismissed with prejudice based on the statute of limitations.

**ROBBIN ITKIN**

Partner  
Sklar Kirsh LLP

Robbin Itkin is a partner in Sklar Kirsh's Bankruptcy practice group. Her experience restructuring billions of dollars of debt includes insolvency resolutions in Chapter 11 cases and numerous restructurings outside the courtroom. As a mediator, Itkin uses her problem-solving strength to advise both healthy companies and those in distress, leading them to negotiate effectively with their own creditors and counterparties who are in fragile economic straits.

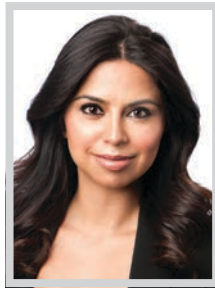
Experienced at representing a range of parties in the bankruptcy process, Itkin has protected the claims and interests of debtors, creditors', equity and bondholders' committees, purchasers, and trustees in corporate restructurings and bankruptcies. Her industry experience spans real estate, entertainment, sports, retail, transportation, manufacturing, and hospitality. Many of Itkin's clients are high-profile individuals in entertainment, sports, and business. She discreetly guides them through out-of-court workouts and financial transactions, often advising at all stages of business growth and on early signs of distress.

**SALLY JAMES**

Partner  
Greenberg Glusker LLP

Sally James handles high-level corporate financing transactions alongside deals for A-list talent. James represented actor Chris Hemsworth in connection with HighPost Capital's acquisition of his Centr business and reorganization of the company with Inspire Fitness for a go-forward combined company (transaction value of \$200 million); represented Scriber in connection with their launch and deal with the Jonas Brothers for a smartphone video subscription service; Ubisoft Entertainment in its high-level, unique content deals with Netflix to develop live-action/animated/anime series based on the video game "Assassin's Creed," as well as a feature adaptation of the game "Beyond Good and Evil."

James closed multiple feature film deals for actress Alice Braga, including as lead in the film "Hypnotic" and "Dark Matter," and closed numerous talent deals for client Adewale Akinnuoye-Agbaje, including on HBO's "His Dark Materials," Showtime's "King Shaka," and Netflix's "Our Man From Jersey."

**BETTY JAVIDZAD**

Partner  
Dentons US LLP

Betty Javidzad is a partner in Dentons' Litigation and Dispute Resolution practice, widely recognized for navigating her national and international clients through complex multimillion and multibillion-dollar matters using the most direct and efficient route to victory. Her practice has a particular emphasis on false advertising, breach of contract, business fraud, unfair competition, trademark and copyright infringement, and various other consumer protection law claims – representing clients in the eCommerce, fashion and retail, advertising, media and digital media, fintech, financial services, blockchain, food and beverage, dietary supplement and other consumer product industries.

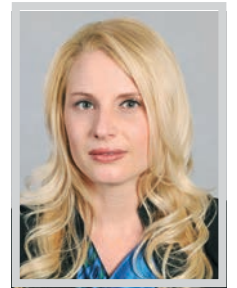
Javidzad is also focused on diversity and inclusion initiatives, including via mentorship of other diverse associates and partners. She defends many organizations in the US and globally against multibillion-dollar and multi-million dollar competitor suits involving claims of false advertising, unfair competition, defamation, trademark and copyright infringement, breach of contract, and business fraud.

**ASHLEY JORDAN**

Partner  
Reed Smith LLP

Ashley B. Jordan is a partner in Reed Smith's Insurance Recovery Group. Jordan has recovered more than \$200 million in insurance proceeds for Fortune 500 and middle market businesses. Jordan is a leading member of a team acting as global counsel to emerging markets investment manager Gramercy Partners, and was instrumental in securing a landmark February 2022 win for the client from the Puerto Rico Supreme Court in a case of first impression involving coverage for more than \$400 million in damages from Hurricanes Maria and Irma.

Jordan also led two lawsuits for a high-profile Kuwait client arising from the more than \$20 million in damage to its G550 business jet, and secured global settlements from property and liability insurers in November 2021 and February 2022 that resulted in a near full recovery for the client.

**PERLETTE JURA**

Partner; Co-Chair, Transnational Litigation Practice Group and Environmental Social Governance Group  
Gibson, Dunn & Crutcher LLP

Perlette Jura co-founded Gibson Dunn's Transnational Litigation Practice Group in 2010, which was the first U.S.-based transnational litigation group in the country. She was also one of the first female chairs of such a group. She has been at the cutting edge of the transnational litigation that is shaping the law around the country. Her work has included high-profile disputes like the hotly contested Chevron Ecuador battle, and representing the world's largest food and beverage companies in transnational supply chain and human rights litigation that has gone all the way to the U.S. Supreme Court.

Jura routinely handles cutting edge cross border disputes for the world's leading corporations. In the past 18 months, Perlette and the Gibson team secured a victory for Meta, which was wrongly blamed for the atrocities carried out by the military in Myanmar.



WOMEN OF INFLUENCE: ATTORNEYS

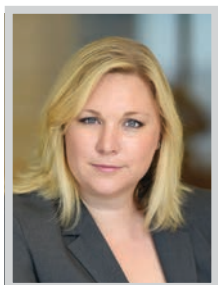


**NISHA KANCHANAPOOMI**

Partner  
Kirkland & Ellis LLP

Nisha Kanchanapoomi is a corporate partner and an integral piece of Kirkland & Ellis' Los Angeles Corporate Debt Finance Practice Group. Her diversified practice includes representing private equity funds, hedge funds, direct lending and other credit funds as well as corporate borrowers and investors in connection with a wide variety of complex transactions. Key clients include Los Angeles-based Ares Management, Brentwood Associates, Coral Tree Partners, and Shamrock Capital; as well as Fortress Investment Group, Gryphon Investors, Industrial Growth Partners, and Luminate Capital Partners.

Kanchanapoomi is recognized as one of the leading finance lawyers in California and has advised on more than 20 financings totaling in excess of \$9.5 billion in the last 18 months. Her work ranges from high-profile multibillion-dollar transactions for global firms and businesses to deals for smaller companies and firms relying on her strategic expertise and business acumen to navigate the shifting market conditions.

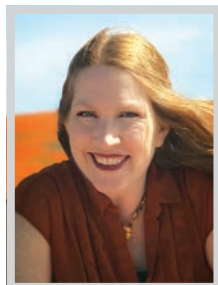


**SARAH KELLY-KILGORE**

Managing Partner Los Angeles Office  
Greenberg Gross LLP

Managing partner of Greenberg Gross LLP's Los Angeles office, Sarah Kelly-Kilgore has built a reputation as a highly skilled and innovative trial and appellate lawyer with the ability to persuade judges and juries in cases with the highest stakes. Clients have come to know Kilgore for her ingenuity, skill and leadership, with one of the firm's most high-profile clients praising her as a "Platinum attorney who performs well beyond [her] experience."

Kelly-Kilgore is co-lead counsel in landmark lawsuits filed for the Trustee of the PG&E Fire Victim Trust to pursue assigned claims against former PG&E vegetation management contractors and major management consulting firms for their responsibility in contributing to the causes of deadly wildfires in Northern California. The Fire Victim Trust will distribute the funds to the 70,000 victims who lost their homes and businesses in the fires.



**CHRISTIANE KINNEY**

CEO and Founder  
Kinney Law, PC

Christiane Kinney is a recognized leader in the music space. She primarily represents artists and producers, assisting her clients in negotiating label and publishing deals, selling music catalogues, creating partnerships for future royalty streams, and helping legacy artists terminate transfer rights and restore ownership over their compositions and master recordings.

Additionally, Kinney has been on the forefront of innovation, handling complex legal issues pertaining to projects within the metaverse and NFT space, and helping strike a balance for her clients and tech companies, and a win-win approach when it comes to these often competing interests. She is also a community leader in many respects. She mentors law students from Pepperdine and Loyola Law Schools, and is a mock trial coach for Mater Dei High School, and she co-founded a 501c3 non-profit organization that provides music and art programs to kids free-of-charge in underprivileged and underserved communities.



**YUKIKO KOJIMA**

Partner, Infrastructure Group  
Nossaman

Yukiko Kojima offers clients unique experience with highly innovative alternative delivery strategies for large-scale infrastructure projects in the U.S. because of her deep knowledge of national best practices as well as Canada's mature P3 market. She primarily advises public agencies in the use of methods such as P3 and design-build, but also represents private-sector participants on select projects.

Kojima takes an active role in Nossaman's P3 practice initiatives in the social infrastructure area, and co-authored the firm's model social infrastructure P3 legislation. She served on the national board of Design Build Institute of America and chaired its P3 Committee from its inception. Before joining Nossaman, she was a partner in the leading P3 practice of a Canadian law firm in Vancouver and Tokyo where she assisted successful and shortlisted bidders on numerous award-winning P3 projects in Canada.

**BUCHALTER CONGRATULATES**

**Tanya Viner and Kalley Aman**

**Women of Influence: Attorneys**

*Los Angeles Business Journal*

**Buchalter**



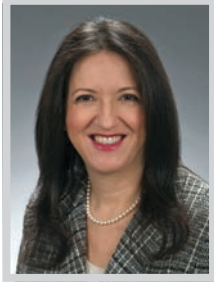
**Tanya Viner**  
Shareholder



**Kalley Aman**  
Shareholder



## WOMEN OF INFLUENCE: ATTORNEYS

**AMY LALLY**

Partner  
Sidley Austin LLP

As global co-leader of Sidley's Consumer Class Action practice, Amy Lally represents consumer products and services industries clients in class action litigation arising under California's Unfair Business Practices Act, False Advertising Law, the Consumers Legal Remedies Act, labeling laws, Proposition 65, the California Invasion of Privacy Act and other statutes. She has been extraordinarily successful in bringing creative and aggressive strategies to bear at an early stage to cut off litigation before time-consuming and expensive discovery, and has an impressive track record of dismissals — especially in California courts where this can be challenging — in cases where other defense lawyers have not succeeded.

Lally currently co-leads a team representing PetSmart in connection with a putative consumer class action filed against Hill's pet food company and PetSmart, challenging the sale and labeling of Hill's Prescription Diet brand pet food.

**JAMIE LANG**

Partner  
King & Spalding LLP

Jamie Lang focuses on white-collar criminal defense, corporate internal investigations, and complex civil litigation. She represents companies and individuals in prosecutions and investigations by the U.S. Department of Justice and other federal and state law enforcement agencies involving the False Claims Act, the Anti-Kickback Statute, and a variety of fraud statutes. Lang also provides compliance analysis and advice to companies, including relating to FCPA, anti-kickback, and fraud-related issues.

Lang served as an assistant United States attorney in the Central District of California for more than six years. During her tenure, she was lead counsel on dozens of felony investigations and prosecutions involving a wide array of federal crimes, including organized crime and racketeering, money laundering, structuring, transnational narcotics trafficking, firearms offenses, tax fraud, mail fraud, and identity theft. She successfully represented the US in numerous jury and bench trials, as well as dozens of contested matters.

**KATE LAQUAY**

Partner  
Munck Wilson Mandala

Kate LaQuay has more than 18 years of experience representing clients in both commercial litigation and employment and labor matters. LaQuay has extensive experience in business litigation, regulatory matters, and resolving employment disputes on behalf of employers. She is highly successful in resolving matters for employers facing claims of wrongful termination, discrimination, harassment, wage/hour disputes, whistleblower claims, and other employment law matters. Her practice also encompasses breach of contract claims, corporate director/officer liability issues, and unfair competition disputes.

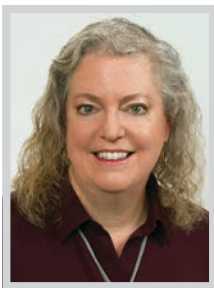
A prolific writer, LaQuay frequently presents on employment law issues, and she writes articles on the evolving employment and labor law landscape to help her clients stay informed. She has earned a position as one of MWM's leading employment litigators on the west coast. LaQuay received her J.D. from the University of California Davis School of Law and holds a degree in political science from Stanford.

**LORIE LAZARUS**

Partner  
Stroock & Stroock & Lavan LLP

Lorie Lazarus has more than 32 years of real estate finance experience, having led hundreds of transactions, including more than 100 loans totaling more than \$5.6 billion over the last five years. She has overseen and guided transactions worth more than \$2.5 billion in California and across the nation within the last 24 months.

Clients rely on Lazarus' experience to handle complicated, unique and valuable real estate transactions that bring maximum gain and minimize risks such as Beach Point Capital Management, Farmers and Merchants Bank, a global real estate investment management firm with over \$140 billion AUM, and a real estate investment trust company that has invested over \$40 billion over the last 20 years. Among her most significant achievements has been her work representing a regional bank lender in more than 34 real estate loans secured by properties throughout California.

**MEG LODISE**

Partner  
Sacks, Glazier, Franklin & Lodise LLP

In her 30-plus year career, Meg Lodise has established an impressive reputation for successfully handling some of the most complex and high-dollar trusts and estates disputes. Among her high-profile work and underscoring her respect in the trusts and estates community, in November 2021, Lodise was requested by Mark Klaver, counsel for the Government of Canada's Trade Law Bureau, to act as an expert and testify. She produced a comprehensive written report and, testified in a five-day arbitration on California trust law in connection with a NAFTA Chapter 11 dispute where the parties' standing to make a multimillion-dollar claim centered on whether an oral trust was validly formed under California law. The opposing expert was a retired California appellate court justice.

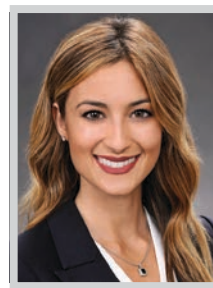
As former secretary and current treasurer of the American College of Trust and Estate Counsel, Lodise works to improve laws, procedures and professional responsibility in connection with trust and estate law.

**KAREN LORANG**

Partner  
Willkie Farr & Gallagher LLP

Karen Lorang has built a notable practice representing investors and developers in connection with complex real estate developments. Her transactional practice includes purchase and sale, finance, leasing, land use and environmental issues. She also advises clients in connection with large-scale, complex development projects. She recently joined the Los Angeles office of international law firm Willkie Farr & Gallagher LLP. The office was launched in September 2021 and has rapidly expanded to approximately 80 attorneys.

The broad scope of Lorang's experience allows her to assist with the full lifecycle of a real estate asset. Her work includes international, national and local representation of a wide range of institutional investors, private equity firms, developers, multinational corporations, REITs, investment banks, foundations, nonprofits and individual entrepreneurs. She has extensive experience with a variety of real estate assets, including mixed-use developments, full-service resorts, industrial facilities, office buildings, retail developments and multifamily properties.

**NICOLE LUEDDEKE**

Associate  
Paul Hastings LLP

A rising star in Paul Hastings' globally renowned White Collar Defense practice, Nicole Dania Lueddeke defends corporations and high-profile individuals in civil and criminal cases and advises on Foreign Corrupt Practices Act, State Attorney General consumer protection statutes, and regulatory proceedings in government investigations involving US DOJ and SEC enforcement.

Lueddeke had a significant trial victory in the "Fat Leonard" corruption and bribery scandal. She represented retired U.S. Navy Rear Admiral Bruce Loveless in the highly-publicized "Fat Leonard" corruption scandal regarding alleged conspiracy, bribery and fraud charges involving entanglements with Singapore-based military contractor. During trial in San Diego, Lueddeke concurrently managed other major international investigations and traveled to DC to handle time-sensitive DOJ, SEC and Board of Directors briefings for clients in Asia. She also currently represents a \$4.6 billion multinational medical technology company involving ongoing DOJ and SEC investigations into potential FCPA violations.

**ANGELA MACHALA**

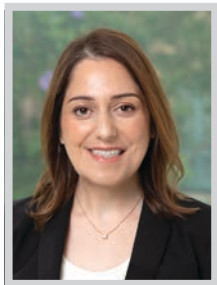
Los Angeles Managing Partner  
Winston & Strawn LLP

Some of Angela Machala's most striking case-related career accomplishments to date involve successfully getting criminal charges dropped against her clients before trial, against all odds. Her track record is due in part to her diligence in researching and investigating these cases, as well as her finely honed ability to use the resulting facts to educate and persuade prosecutors of her clients' innocence.

In one representative case, Machala helped to successfully secure a rare post-indictment dismissal of all criminal charges against her client in a closely watched theft of trade secrets case in the Northern District of California. The US Department of Justice described its decision to drop the charges as a "serious step," especially more than a year since the indictment. Prior to that case, on the eve of trial, Machala obtained a dismissal from the California Attorney General's Office of all charges against her client, a registered nurse.



WOMEN OF INFLUENCE: ATTORNEYS



**MAHRU MADJIDI**  
*Managing Associate Attorney*  
 Shegerian & Associates

**M**ahru Madjidi is a managing associate attorney at Shegerian & Associates. She has strong trial experience and has played a role in many cases which have resulted in record-breaking verdicts and settlements. Her skills and ability in the courtroom are what set her apart from other trial lawyers. She is one of the top litigators at Shegerian & Associates and has recovered hundreds of millions on behalf of her clients.

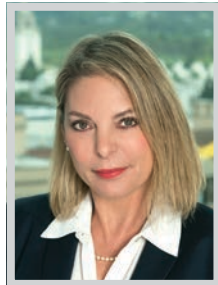
Madjidi and her team settled over \$20 million in cases in 2022 alone. Among her career accomplishments include a case that ended in a \$10 million settlement which resolved before any motion for summary judgment was opposed or ruled on. It was a significant accomplishment, both because of the settlement amount, but also, because defense was not offering seven figures prior to our firm signing on as co-counsel.



**KATE MANGELS**  
*Partner*  
 Kinsella Weitzman Iser Kump Holley LLP

**K**ate Mangels, partner at litigation powerhouse Kinsella Weitzman Iser Kump Holley LLP, represents companies and individuals in extremely high-stakes and complex civil and criminal matters, including white collar criminal matters. She has significant experience handling a variety of cases, including federal criminal insider trading trials, civil and criminal government contracting fraud charges, and breach of contract and malpractice arbitration.

On the criminal side, Mangels has made numerous court appearances and drafted successful motions for clients to participate in diversion programs to avoid criminal prosecution. In one case involving a former professional basketball player, Mangels drafted a successful motion to suppress evidence collected during an unconstitutional search of the client's vehicle. In May 2019, all charges against the firm's client were dismissed. Additionally, Mangels successfully obtained numerous restraining orders for high-profile clients, drafting the papers and arguing the merits in court.



**NINA MARINO**  
*Founding Partner*  
 Kaplan Marino

**N**ina Marino oversees a complex litigation and white-collar crime practice that is national and international. She negotiates with the U.S. Department of Justice, state attorneys general, District Attorneys, and Interpol in her defense of individuals alleged to be involved with Medicare fraud, Foreign Corrupt Practice Act violations and tax, cyber and other crimes.

Marino likes to save people. Right from the start, clients understand that she takes their cases as personally as they do. Her presentations before US Attorneys introduce new perspectives, compelling context and workable paths to resolution. Marino's unconventional combination of caring, integrity and formidable lawyering has earned her a national reputation and recognition. She discovers the shades of gray behind prosecutors' black-and-white arguments to shine new light on her clients' circumstances. Her team-driven, meticulously prepared strategies have repeatedly helped clients reach their objectives – from staying out of prison to defending allegations all the way to trial.



**LISA HELFEND MEYER**  
*Co-Founder and Senior Partner*  
 Meyer, Olson, Lowy & Meyers, LLP

**L**isa Helfend Meyer is a co-founder and senior partner at Meyer, Olson, Lowy & Meyers, LLP, a boutique family law firm. Meyer has been certified as a Specialist in Family Law by the Board of Legal Specialization of the State Bar of California since 1989. Founded in 2000 entirely by female partners, with the goal of representing clients in high conflict and complex divorces and custody cases, the firm now includes approximately 25 attorneys, who have expertise in all aspects of family law and are adept at both mediating and litigating cases.

For over four decades, Meyer has been a commanding force within the legal profession and specifically the family law community, a successful businesswoman, and a passionate advocate for the rights of children and parents. Meyer recently litigated a highly publicized case of a woman seeking a domestic violence restraining order against a former Los Angeles Dodgers pitcher.

Congratulations to our partner **Ivy Kagan Bierman** and all of our friends recognized in the *Los Angeles Business Journal's* 2023 Women of Influence: Attorneys list!

We salute your outstanding professional accomplishments and wholehearted commitment to the firm and your clients.



LOS ANGELES  
 NEW YORK  
 CHICAGO  
 NASHVILLE  
 WASHINGTON, DC  
 SAN FRANCISCO  
 BEIJING  
 HONG KONG

loeb.com

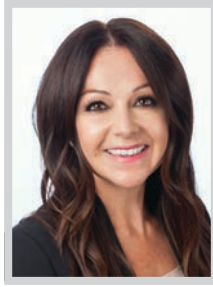
## WOMEN OF INFLUENCE: ATTORNEYS

**JOI MORRIS**

Senior Counsel  
Freeman Freeman & Smiley, LLP

Joi Morris is an experienced trusts and estates lawyer and nonprofit leader with over 30 years of combined legal and nonprofit experience. Her dedication to social justice and community service is evident in her work, which has been recognized with numerous awards, including the Public Counsel Pro Bono Award, the Spirit of Empowerment Award, and an American Medical Writer's Association Award.

Morris' early career involved working as part of a team of attorneys that recovered what was at that time the largest verdict against a slumlord in Los Angeles. Throughout her career, she has been committed to helping families and communities, especially in her advocacy for families facing inherited breast and ovarian cancer. She served on the board of Facing Our Risk of Cancer Empowered and is an advocate in science with Susan G. Komen for the Cure.

**TANIA MOYRON**

Partner; Chair, US Region Restructuring,  
Insolvency and Bankruptcy Group  
Dentons US LLP

Tania Moyron is well-known for her skill in both out-of-court and in-court restructurings spanning a variety of industries including health care, retail, entertainment, trucking, and real estate. She currently leads a Dentons team in Chapter 11 cases filed by home mortgage originator First Guaranty Mortgage Corporation. The team negotiated and obtained approval of two debtor in possession facilities; one providing financing for FGMC's cash flow for operations, and one, with Barclays, providing financing to fund loans in the pipeline. Moyron obtained first-day relief allowing FGMC to continue in business.

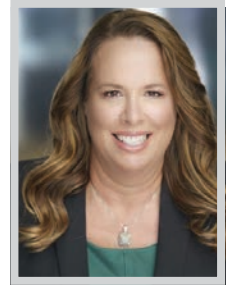
Moyron was also the attorney primarily responsible for representation of Verity Health System of California and 16 related entities, including six acute care operating hospitals, in their chapter 11 cases—the second largest hospital bankruptcy case in American history. Court approved sale of Verity's hospitals and senior living facility, and confirmed joint plan of liquidation, which resolved complex litigation.

**MICHELE MULROONEY**

Partner; Chair, Private Clients Group Los Angeles  
Willkie Farr & Gallagher LLP

Michele Mulrooney is a leading trusts and estates lawyer with over 30 years of experience representing high-net-worth families and individuals, including actors, directors, writers, producers, artists, sports figures, business owners and executives, and real estate investors, both domestically and internationally. She has substantial experience in all aspects of sophisticated estate planning, including the preservation and protection of wealth for generations of families, establishing and advising private foundations, post-death administration of estates and trusts, establishing and advising conservatorships and guardianships, cross-border planning for multinational clients, and insurance issues.

Mulrooney's experience and insight into the unique legal needs facing individuals in the entertainment industry have led her to develop a broader service offering for her clients. This includes counseling on general business and personal matters, including serving as an advisor to family law counsel in complex divorce situations.

**STEPHANIE JONES NOJIMA**

Senior Counsel  
Sanders Roberts LLP

Stephanie Jones Nojima served as a member of the Independent Review Panel that investigated the structural issues within LAPD that led to the rampant corruption in LAPD's Crash Anti-Gang Unit and within the Rampart Division more broadly. She received a commendation from the Mayor of Los Angeles for her work.

Immediately following the 9/11 terrorist attacks on the World Trade Center, Nojima worked with some former law school colleagues and the Association of Trial Lawyers of America to develop the framework for the compensation fund for the families of 9/11 victims, and after Congress authorized and funded the program, Nojima represented a family, on a pro bono basis, who lost a loved one in the Twin Towers collapse. It took almost three years to secure the reward, but the compensation received from the Victim's Compensation Fund provided a secure financial future and mental health services for the family.

Bro//nstein

DIANE DE FELICE

You're  
All In!

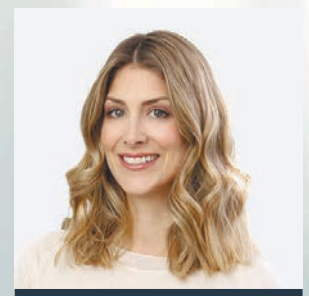
Congratulations on being selected as one of the Los Angeles Business Journal's Women of Influence.

VISIT BHFS.COM TO LEARN MORE >



Where great work  
and great people  
come together.

Congratulations to  
**September Rea** for being  
featured as one of the  
*Los Angeles Business  
Journal's Women of  
Influence: Attorneys!*



Leaders stand out.

**September Rea**  
Employment Litigation,  
Arbitration & Dispute  
Resolution Vice Chair  
Los Angeles

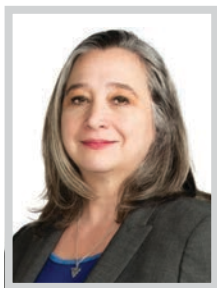
**POLSINELLI**  
What a law firm  
should be.™

Am Law 100 firm with  
1,000 attorneys nationwide  
22 offices from LA to NY  
170+ services/industries  
[polsinelli.com](http://polsinelli.com)

The choice of a lawyer is an important decision that should not be based solely upon advertisements. Polsinelli PC, Polsinelli LLP in California, Polsinelli PC (Inc) in Florida.



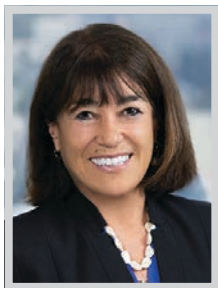
WOMEN OF INFLUENCE: ATTORNEYS



**COLLEEN O'BRIEN**  
Principal  
Scali Rasmussen, PC

Trial attorney and litigator Colleen O'Brien tries and resolves lawsuits and challenges related to toxic torts, catastrophic injury and complex employment matters. Her experience includes leading a range of civil litigation, from consumer fraud to defamation to chemical exposure and personal injury claims. O'Brien defends companies against plaintiffs' sophisticated claims involving long-term occupational injury, infectious disease, property damage and groundwater contamination. A former military prosecutor, O'Brien guides business clients as first chair, lead counsel in bench and jury trials in state and federal courts throughout the United States.

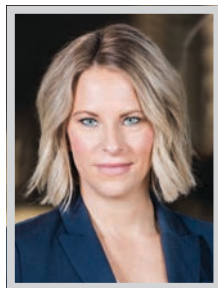
O'Brien has successfully tried more than 30 matters to verdict for her clients, both as a government attorney in criminal contexts and in private practice. She is known for her skillful preparation and examination of medical and technical experts at deposition and trial. Her keen attention to detail and commitment to cases have helped clients settle their disputes efficiently and quickly.



**FRANCES O'MEARA**  
Defined Equity Partner  
Wood Smith Henning & Berman LLP

Frances O'Meara is a defined equity partner in Wood, Smith, Henning & Berman's Los Angeles office. Practicing law since 1998, she is nationally known as a powerhouse litigator in the professional liability area for the results she secures in and out of trial involving complex civil litigation. Beyond her substantial trial experience, O'Meara is a frequent speaker on all aspects of professional liability and is often sought out by professionals who need her sage advice and representation in the most private of matters, including lawyers, accountants, architects, insurance agents, real estate brokers, appraisers, doctors, and nurses.

O'Meara is especially admired for keeping a finger on the pulse of current affairs and consistently makes a difference by serving as a role model for professional women, shattering glass ceilings wherever she goes as a woman of color, and serving as an inspiration to the conglomerate of female attorneys.



**ELIZA LANGDON OLIVER**  
Senior Attorney  
Hudock Employment Law Group

Senior attorney Eliza Langdon Oliver is a litigator with more than ten years of experience, much of it focused on employment law. She joined the firm full-time in 2018 and has become an integral part of the client service litigation team. Oliver handles motions, including arguing motions for summary judgment; pleadings and discovery; and depositions. She also handles mediations for clients, attends case conferences, and makes other court appearances. Her experience includes wage and hour cases, FEHA discrimination, harassment and retaliation cases, and class actions.

Oliver practiced in several large international firms before joining HELG. She enjoys the close contact she has with clients, and the opportunity to brainstorm strategy. Among her recent matters includes *Bowen v. Allan D. Singer, M.D., Inc. et al.*; pre-filing claim for age discrimination, disability discrimination, race discrimination and harassment, by a former employee against medical partnership and its owners; settled.



**CATHERINE OWENS**  
Counsel  
Larson LLP

Calm and levelheaded in depositions, yet a sheer force in the courtroom, Catherine Owens is guided by her intuitive strategy in every litigation situation. While she is often opposing litigators far her senior, Owens has led depositions, cross-examined witnesses, and developed creative litigation strategies that led to significant client wins. Like all great litigators, Owens listens to her clients, and then does everything in her power to achieve their desired outcomes. She routinely becomes personally involved with the business interests of her clients.

Owens' practice focuses on all aspects of complex commercial litigation and white-collar defense, and she represents clients in a variety of industries, including social media, technology, and pharmaceutical companies. She has obtained notable litigation wins over the review period, including representing another law firm in a breach of contract case which resulted in a settlement that saved the client hundreds of millions in potential damages.

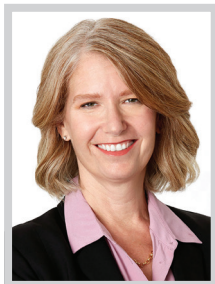


We proudly congratulate our colleague, Valerie Goo, on being named among the *Los Angeles Business Journal's* "Women of Influence: Attorneys."

[crowell.com](http://crowell.com)



WOMEN OF INFLUENCE: ATTORNEYS



**HILARY POTASHNER**

*Partner  
Larson LLP*

A fellow of the prestigious American College of Trial Lawyers and the twice-selected former Federal Public Defender for the Central District of California, Hilary Potashner is continually recognized throughout her 30-year career as being among the top trial lawyers in California and the nation.

Since joining Larson in 2019 after serving for years as the Federal Public Defender, Potashner has taken on many of the firm’s top white collar defense matters, investigations, and complex civil cases, as well as achieving appellate victories—drawing upon her deep familiarity and impressive credibility with state, federal, and appellate courts to serve the advantage of her clients. She successfully defends individuals facing charges in both state and federal court. In her civil practice, she represents both plaintiffs and defendants in intellectual property and contract disputes, civil forfeiture, misrepresentation, negligence, civil theft, and garnishment cases.



**SEPTEMBER REA**

*Employment Litigation, Arbitration and  
Dispute Resolution Vice Chair  
Polsinelli*

September Rea is a seasoned litigator in Polsinelli’s Employment Litigation practice and vice chair of the Employment Litigation, Arbitration and Dispute Resolution team with a creative, business-focused approach to conflict resolution. She has experience in all employment-related litigation forums including administrative, state, federal and arbitration. She routinely partners with clients as a trusted advisor to defend against employment-related action including age, religion, gender, race, national origin, disability, harassment, wrongful termination, discrimination, retaliation and FMLA.

A skilled mediator and negotiator, Rea works closely with clients to resolve employment matters swiftly and cost-effectively. Her practice is particularly focused on advising employers in the entertainment, start-up, technology and hospitality sectors. She counsels clients in all aspects of employment including executive compensation and litigation.



**ANGELA REDDOCK-WRIGHT**

*Employment Mediator  
Reddock Law/Signature Resolution*

Angela Reddock-Wright is an employment mediator, arbitrator, workplace, and Title IX investigator. A graduate of UCLA School of Law and Amherst College, Reddock-Wright received her training as a mediator from the Strauss Institute for Dispute Resolution at the Pepperdine University School of Law. She has been a distinguished fellow with the Coro Foundation of Los Angeles, the German Marshall Fund, and the Jewish Federation of Los Angeles.

Reddock-Wright has practiced as an employment and labor law attorney for 26 years. After working as an employment litigator for 15 years, in 2011, she opened the Reddock Law Group and transitioned to becoming a full-time neutral. In addition to having her own firm, Reddock-Wright is a member of the panel of mediators and arbitrators at Signature Resolution, a private dispute resolution firm with offices throughout California.



**KATHERINE A. ROBERTS**

*Partner; Co-Chair, Labor,  
Employment and Immigration Group  
Sidley Austin, LLP*

Kate Roberts has an unusually wide range of accomplishments including her team’s recent complete victory at trial in a major employment wage and hour lawsuit and her work leading the employment and labor team on numerous major transactions and union negotiations. This record of achievement combined with her leadership of one of the nation’s top employment practices and her high-level pro bono and philanthropic work make her a strong candidate for this honor.

The recent trial win came when Roberts served as trial counsel for Liberty Mutual Insurance Company in one of the very few misclassification cases to go all the way to trial. Working with co-counsel Mark Campbell and William Martucci of Shook Hardy, the team won a complete defense verdict in November 2021 against nine plaintiffs in a wage/hour action in which Liberty Mutual argued it had correctly classified its adjusters as administratively exempt under California law.

**YOKA | SMITH**



YOKA | SMITH congratulates our firm’s managing partner, **ALICE CHEN SMITH** on being selected as one of the Women of Influence: Attorneys by the Los Angeles Business Journal.

yokasmith.com

**Congratulations**



**Hilary Potashner  
Catherine S. Owens**

**Women of Influence:  
Attorneys**

**LARSON**  
larsonllp.com



WOMEN OF INFLUENCE: ATTORNEYS



**ANN LA MORENA ROHLIN**

*Partner*  
Norton Rose Fulbright US LLP

**A**nn La Morena Rohlin has spent over two decades with Norton Rose Fulbright, serving her clients on public finance matters. Since joining the Los Angeles location in 2001, she has handled both short-term and long-term financings for K-12 schools, community college districts, hospital districts, cities, counties, joint powers authorities and other public agencies.

Rohlin has represented clients on tax and revenue anticipation note financings, general obligation bond elections and financings, certificates of participation, teeter plan obligation notes and lease revenue bond transactions. Her wide range of clients include school districts, community colleges, hospital districts, cities, counties, joint powers authorities and investment banking firms. As a trusted professional in her field, Rohlin has a prolific resume of speaking engagements, including events for The Association of Chief Business Officials, Los Angeles County Office of Education and California Latino School Boards Association.

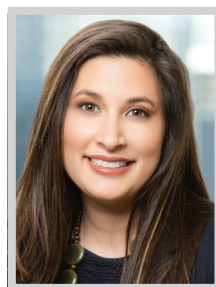


**NEEMA SAHNI**

*Partner; Co-Chair, Music Industry Group; Vice Chair, Sports Industry Group*  
Covington & Burling LLP

**N**eema Sahni, partner, co-chair of Covington’s Music Industry Group, and vice chair of the firm’s Sports Industry Group, has built one of the most diverse legal practices serving the sports, media, and entertainment industries and has become a go-to counsel for some of the industry’s biggest names. Through her work at Covington & Burling, and her prior experience in-house at The Walt Disney Company, Sahni has developed a sophisticated understanding of the legal issues facing clients in the sports, media, and entertainment industries.

Alongside an active litigation docket, Sahni maintains a robust counseling and advisory practice, assisting sports teams and leagues, television networks, and film studios to assess and mitigate their litigation risk in the context of high-stakes business transactions. Her clients include Disney and Paramount Global, major sports leagues like the NFL, professional sports teams, media properties like the Pac-12 Network, and major music companies like Sony Music.



**LEILA SAYEGH**

*Partner*  
Skadden, Arps, Slate, Meagher & Flom LLP

**A**s a newly named partner in Skadden’s Los Angeles office, Leila Sayegh leads innovative financing transactions that are critical to a company’s survival, enabling game-changing acquisitions and recapitalizations and facilitating their available credit. She has advised clients in multiple industries on financings for multiple billion-dollar deals, multi-currency cross-border senior secured credit facilities and complex restructuring financings, among others. The more complicated the financing need, the more frequently she is called on.

Among Sayegh’s significant transactions has been her work representing Convera. Sayegh led the financing for the acquisition of Western Union Business Solutions by Goldfinch Partners and The Baupost Group for \$910 million in an intense effort navigating tax, regulatory and multiple international jurisdictional issues. Also, for Dole Plc, Sayegh led the \$1.44 billion financing in connection with the merger of Total Produce PLC and Dole Food Company, Inc. and the initial public offering of the combined company.



**CHERYL SCHRECK**

*Partner*  
Fisher Phillips LLP

**F**or more than 30 years, Cheryl L. Schreck has made a name for herself in the Los Angeles business community and state-wide by handling workplace investigations and other sensitive issues for employers. A partner in Fisher Phillips’ Los Angeles office, she regularly defends employers in complex employment litigation including class and collective wage and hour and discrimination actions, as well as single and multi-plaintiff actions involving employment discrimination, harassment and retaliation, wrongful termination and wage and hour claims.

Schreck represents employers from case inception through trial or arbitration. She has represented clients in multiple jury and bench trials and arbitrations that have resulted in defense verdicts or awards in favor of her clients. She not only knows how to handle high-stakes litigation but strategically partners with her clients both before litigation ensues and after a matter resolves to ensure that compliance issues are remedied proactively to avoid future litigation.

*Congratulations!*



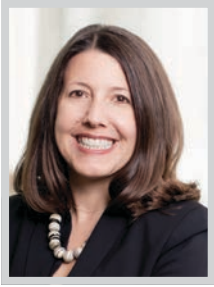
*ZFZ Law congratulates all of the esteemed honorees and our partner and colleague on being selected by the Los Angeles Business Journal.*

**Rachel Fiset**  
**Women of Influence**  
**Attorneys**



zfzlaw.com

WOMEN OF INFLUENCE: ATTORNEYS

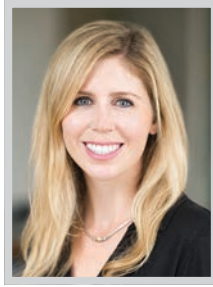


**DAWN SESTITO**

Partner; Managing Partner, Los Angeles Office  
O'Melveny & Myers LLP

From securing landmark decisions in a same-sex marriage case, to defending the world's most recognizable technology companies (Apple, Samsung, Belkin) in IP matters, to handling sensitive Title IX matters for colleges and universities, Dawn Sestito provides trusted counsel to companies and individuals across practice lines and geographies.

Sestito has extensive experience defending ExxonMobil Corporation in various matters, including representing the company in litigation against the Santa Barbara Board of Supervisors for refusal to approve a permit allowing ExxonMobil to truck oil across the county while a pipeline is repaired. Also, in Tortilla Factory, LLC v. GT's Living Foods, LLC, a recent bench trial, Sestito served to defend GT's Living Foods against Lanham Act and unfair competition claims regarding the labelling, marketing, and sale of its kombucha products. She also represented BlueTriton Brands, Inc., in multiple suits. Sestito has won motions to dismiss in two separate cases.



**JESSICA SGANGA**

Partner  
Knobbe Martens

Jessica Sganga focuses on domestic and international trademark, unfair competition, copyright, data privacy, advertising, and internet law. Sganga is a certified data privacy specialist by the International Association of Privacy Professionals.

Among the notable recent matters in which Sganga played an integral role has been her work on the Monster Beverage Corporation Acquisition of CANarchy Craft Brewery Collective. In January of 2022, Sganga played a key role in client Monster Beverage Corporation's acquisition of craft beer and hard seltzer company CANarchy Craft Brewery Collective for \$330 million. This strategic transaction enables Monster to enter the alcoholic beverage sector. Sganga was instrumental in the IP due diligence. Sganga also plays an integral role in the trademark clearance, filing strategy, and foreign opposition strategy for Monster Energy. Sganga is also a part of the trademark team that handles all aspects of trademark protection and enforcement for Fox Corporation.

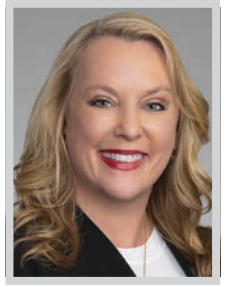


**CORTNEY SHEGERIAN**

Partner  
Shegerian Conniff, LLP

Cortney Shegerian started a women owned law firm with business partner Heather Conniff in 2018. Shegerian Conniff currently has four employees and has handled hundreds of cases, including highly publicized sexual assault/harassment cases such as Doe v. City of Bakersfield.

Throughout her career as an attorney, Shegerian has argued in front of the California Supreme Court as well as the Court of Appeal and has secured settlements and judgments in excess of \$150 million for her clients, including an \$8.3 million verdict for a fatal bus crash suit along with a \$352,083 verdict for a wrongfully terminated employee. Shegerian has served as a speaker and panelist in the area of employment law for the Women Lawyers Association of Los Angeles, the Beverly Hills Bar Association and the Los Angeles County Bar Association.



**MONICA SHILLING**

Partner  
Kirkland & Ellis LLP

Monica Shilling has always taken full advantage of the changing transactional playbook. Her vast experience in corporate, mergers and acquisitions and securities law, along with her unique legal insight to navigate the changing deal market and identify opportunities that create value, has made her a go-to adviser for clients eyeing complex deals. Shilling's diverse practice and her understanding of the financial markets and industry expertise have propelled her as one of the leading women attorneys steering private equity's entertainment boom.

Understanding that entertainment platforms do not have limitations to how much content that they can hold, and content is king, Shilling's distinctive skill set and experience with deal structures and innovative partnerships have helped her create new investment opportunities in the industry. Recently, she represented Creative Artists Agency in its strategic partnership with Primary Wave Music, the leading independent publisher of iconic and legendary music.

大成 DENTONS

**Dentons congratulates Tania Moyron and Bety Javidzad on being named Women of Influence by Los Angeles Business Journal.**

We benefit every day from Tania and Bety's leadership as partners, where they are committed to shaping a culture of diversity, client service, career fulfillment and collegial trust.

Grow | Protect | Operate | Finance

**Dentons, the law firm of the future is here.**

dentons.com

© 2023 Dentons. Dentons is a global legal practice providing client services worldwide through its member firms and affiliates. Please see dentons.com for Legal Notices.

**Fisher Phillips**

**Fisher Phillips is proud of our trailblazer winners and Congratulates all the 2023 Women of Influence: Attorneys**

Fisher Phillips celebrates the advancement of women both within the firm and within the community.

**Anet Drapalski**  
Partner  
Los Angeles  
213.330.4476  
adrapalski@fisherphillips.com

**Cheryl L. Schreck**  
Partner  
Los Angeles  
213.330.4452  
cschreck@fisherphillips.com

444 South Flower Street | Suite 1500 | Los Angeles, CA 90071  
21600 Oxnard Street | Suite 650 | Woodland Hills, CA 91367

..... fisherphillips.com

With more than 500 attorneys in 37 offices across the United States, Fisher Phillips is a national labor and employment firm providing practical business solutions for employers' workplace legal problems.



WOMEN OF INFLUENCE: ATTORNEYS



**STACEY SHIN**

Attorney  
Kaufman Legal Group

Stacey Shin joined Kaufman Legal Group in 2010. Shin advises candidates, office-holders, labor unions, ballot measure committees, major donors, independent expenditure committees and other political organizations on compliance with federal, state and local campaign finance, election and governmental ethics laws. She also counsels lobbying organizations and lobbying firms on compliance with lobbying laws.

Shin previously served as legal counsel to then-Chairman Steven T. Walther of the Federal Election Commission, where she advised on policy and enforcement matters coming before the Commission. Before that, she spent two years as policy counsel at the Commission, drafting federal campaign finance regulations and advisory opinions implementing the Federal Election Campaign Act and the Bipartisan Campaign Reform Act of 2001. During her time in Washington, D.C., Shin also worked as a legal intern for the U.S. House Judiciary Committee, U.S. Senator Tom Harkin, and in the Civil Rights Division of the U.S. Justice Department.



**LARA SHORTZ**

Firm Recruiting Partner; Employment Advice, Counsel & Executive Litigation Chair  
Michelman & Robinson, LLP

Lara Shortz has become one of the city's most influential female lawyers. Given the work she continues to do on behalf of her clients and law firm—Michelman & Robinson, LLP, where she serves as the firm recruiting partner. Shortz is a modern-day employment attorney for forward-thinking clients and an indispensable, straight-talking advisor to executives across industries looking for new-school representation. No matter the issues confronting them, occupants of the C-Suite can count on Shortz to cut through the noise and get them to first position by connecting as she counsels.

In terms of her work product, Shortz's employment practice is thriving. She represents some of the most admired companies in L.A. and has been involved in a several notable employment-related matters. In 2022, she guided major tech companies through multiple WARN Act layoffs and rehires pursuant to applicable right of recall laws.



**ALICE CHEN SMITH**

Managing Partner  
YOKA | SMITH, LLP

Alice Chen Smith is the Managing Partner of YOKA | SMITH, LLP and is an experienced litigator who has successfully tried many cases to verdict. Her primary focus is litigating catastrophic personal injury cases, products liability and business litigation matters. She practices throughout the State of California, including Los Angeles, Orange, Riverside, San Bernardino, Santa Barbara, San Diego, San Francisco, Alameda, San Mateo, Fresno, and Santa Clara Counties in trial and appellate courts.

Smith was inducted into the American Board of Trial Advocates as a member of the Los Angeles Chapter in 2019, and was appointed as an Executive Committee member in 2022. She is an elected member of the Board of Directors for Los Angeles County for Association of Southern California Defense Counsel. She has served on the Los Angeles County Bar Association President's Advisory Committee on Women in the Legal Profession since 2018.



**MARGARET SOHAGI**

Managing Partner  
The Sohagi Law Group, PLC

Margaret Sohagi's practice for the last 30 years has focused on assisting cities, counties, and other public agencies navigate the legal complexities of land use, California Environmental Quality Act (CEQA) and the National Environmental Policy Act. Sohagi provides constructive, practical legal advice, working directly with lead agency counsel, staff, appointed elected officials. When necessary, she zealously defends lead agencies' land use approvals and environmental determinations in judicial proceedings, and frequently heads mediation teams in settlement discussions.

As a longstanding CEQA instructor for California's Continuing Judicial Studies Program, Sohagi has the unique opportunity to instruct Superior Court judges, appellate justices and court attorneys. Her land use and environmental law expertise, and ability to keep public agencies informed about the latest legal developments and trends, is also demonstrated through her frequent planning and legal conference presentations and extensive UCLA and USC teaching experience.

Willkie congratulates partners  
**Michele Mulrooney** and  
**Karen Lorang**




Los Angeles Business Journal's  
2023 Women of Influence:  
Attorneys




Brussels Chicago Frankfurt Houston London  
Los Angeles Milan New York Palo Alto Paris  
Rome San Francisco Washington  
Est. 1888 | 1,200 lawyers worldwide

Willkie is headquartered in New York City at 787 Seventh Avenue | Tel: 212.728.8000

LATHAM & WATKINS LLP

**Defining Leadership**

Experience. Commitment. Talent.



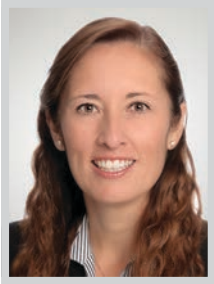
**KIM BORAS**  
Partner, Corporate

Congratulations to our partner **Kim Boras** and all of this year's *Women of Influence* honorees.

We're grateful for Kim's leadership and all her contributions to our firm and our community. Kim embodies the talent and culture of Latham & Watkins.

LW.com

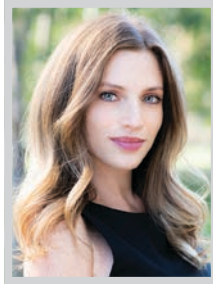
## WOMEN OF INFLUENCE: ATTORNEYS

**ROSE SORENSEN**

Partner  
Snell & Wilmer

Rose B. Sorensen is a corporate and securities partner in Snell & Wilmer's Los Angeles office whose practice includes mergers and acquisitions, divestitures, reorganizations, commercial finance, private placements, venture capital, corporate governance, telecommunications services, joint ventures, licensing and entity structure and formation. She has experience handling a range of large-scale mergers and acquisitions, project and corporate financings and restructurings in a variety of industries including the technology, healthcare, food and beverage, manufacturing, retail consumer brand, business services, construction and building materials.

Sorensen's background includes serving as general counsel of a private cable operator and internet service provider with operations throughout California, Arizona, and Texas, which helped shape her unique and balanced pragmatic approach in advising businesses on the complexities and functional considerations of their operations.

**CASEY SYPEK**

Partner  
Miller Barondess, LLP

Casey Sypek is a business litigator admitted in California and New York. She has had success at every stage of litigation representing clients in a variety of commercial matters, including contract, fraud, employment, copyright, trademark, entertainment, and false advertising disputes.

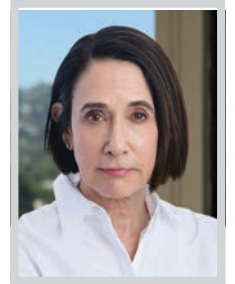
Among her notable work, Sypek represents 1.1 million Prius owners in federal court class action against Toyota. Plaintiffs defeated Toyota's motion to dismiss and motion to compel arbitration. The court recently granted final approval of a proposed settlement significantly benefitting Prius owners. She also defended LA County in an 11-day federal jury trial involving photographs taken by County personnel following the tragic helicopter crash that killed nine individuals, including Kobe Bryant and his daughter. She also successfully defended the City of Inglewood and Mayor James Butts in multiple lawsuits instigated by Madison Square Garden-Forum and its attempts to block construction of the new L.A. Clippers arena in Inglewood.

**JANE USHER**

Partner  
Musick, Peeler & Garrett LLP

Jane Usher is a partner in the Musick, Peeler & Garrett's Los Angeles office. She represents private, public, and non-profit entities in their regulatory affairs. Her work commonly arises out of the use of land and natural resources. For 30 years, Usher has advised clients on issues of planning, zoning, permitting, subdivisions, title, easements, covenants, real estate development, soil, air, water, energy, recycling, remediation, and the California Environmental Quality Act. Her expertise includes the companion fields of the Brown Act, Public Records Act, ethics, ordinances, legislation, community outreach, public hearings, and general municipal and administrative law.

Usher guides her clients from the inception of a matter, through agency hearings and determinations, to the conclusion of any litigation that might result. Prior to joining Musick Peeler in 2014, Usher served the City of Los Angeles in a series of appointed roles, including counsel to Mayor Tom Bradley.

**JOAN B. VELAZQUEZ**

Partner; Chair, Real Estate Department  
Ervin Cohen & Jessup LLP

Joan Velazquez is a partner and chair of Ervin Cohen & Jessup's Real Estate Department. She is a creative problem solver and proven deal maker who never loses sight of her clients' business goals. She understands that her job is to mitigate her client's legal risks while letting them realize the business opportunity in every deal.

Velazquez represents real estate owners, developers, investors, lenders, contractors and asset managers in connection with a wide range of projects, including the acquisition, financing, development, leasing, management and sale of major real estate projects. She is experienced in the formation of partnerships, joint ventures, limited liability companies and arranging complex capital structures, including highly leveraged mezzanine financing, subordinated lending arrangements and other creative solutions. Having structured, documented and closed more than one billion dollars of financing transactions over the past years, she guides clients with distressed properties successfully restructuring existing debt.

Congratulations to  
**Elizabeth Acevedo**  
on her selection to the  
*Los Angeles Business Journal's 2023*  
"Women of Influence: Attorneys."

It is an honor to work with you, and we are proud of your accomplishments.



ESTATE PLANNING | WEALTH TRANSFER PLANNING

ESTATE & TRUST ADMINISTRATION | ESTATE & TRUST LITIGATION

BUSINESS SUCCESSION PLANNING | CHARITABLE PLANNING

**Weinstock  
Manion**

[weinstocklaw.com](http://weinstocklaw.com)



WOMEN OF INFLUENCE: ATTORNEYS



**EMILY BURKHARDT VICENTE**

Partner; Co-Chair, Labor & Employment;  
Co-Chair, Diversity & Inclusion  
Hunton Andrews Kurth LLP

Emily Burkhardt Vicente is co-chair of the firm’s national labor and employment team and diversity and inclusion committee. Vicente was selected as co-chair of the national labor and employment practice of an American Lawyer 100 firm after only eight years as a partner. This is no small feat and a testament to her leadership abilities.

Vicente has defended some of the large Fortune 100 companies in high-stakes employment litigation and is one of few lawyers to take hybrid class and collective action cases to jury trial. She has helped clients navigate sexual harassment claims fraught with legal and public relations challenges in the #metoo era, equal pay challenges, implementation of AI and emerging technologies in the workplace, and most recently COVID-19 related employment issues. She has helped Fortune 100 companies develop and implement ESG programs around diversity and inclusion that balance legal, business and social interests.

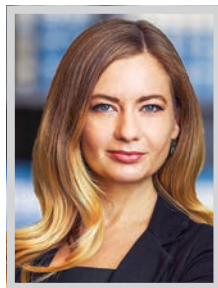


**TANYA VINER**

Shareholder  
Buchalter

Tanya Viner’s practice focuses on mergers and acquisitions, representing both the buyer and seller in large complex transactions ranging from the sale of closely-held family businesses to transactions in excess of a billion dollars.

In addition to her mergers and acquisitions practice, Viner provides day-to-day counseling on a broad range of transactional and governance matters advising emerging growth companies on formation, venture capital financing, licensing, and employment issues, often acting as outside general counsel, and trusted advisor throughout every aspect of growth. Viner advises clients on matters in nearly every major business sector, including consumer products, apparel, food and beverage, technology, beauty, financial services, manufacturing and retail. Currently, she is serving on the board of The Professional Club. Working with a close-knit and dedicated team of professionals, Viner’s clients appreciate her practical approach in offering legal and business advice to ensure goals are met and deals get done.

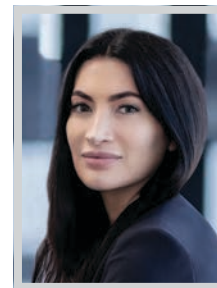


**JENIFER WALLIS**

Co-Managing Partner, LA office  
Munck Wilson Mandala, LLP

Jenifer Wallis is the co-managing partner of MWM’s Los Angeles office and she is a partner in the firm’s intellectual property/technology practice. She brings more than 17 years of legal experience to the firm and her unique practice positions her to represent clients in business litigation and entertainment law. Her commitment to growth and professional excellence has helped her firm expand through business development and recruiting efforts, adding 12 attorneys to the LA office in the past two years.

Wallis’ knowledge of LA culture and her commitment to improve business processes has placed the firm’s LA office in the lead, ahead of other firm offices in both attorney headcount and DEI initiatives. This past year, she helped the firm recruit a senior lateral partner with a significant book of business who will bring extensive litigation and real estate services to the LA market.



**NATALIE WEATHERFORD**

Partner  
Taylor & Ring

Early in her legal career, Natalie Weatherford made a decision to focus her practice on representing victims of sexual abuse and assault, and taking on the institutions that try to silence them. Her decision to dedicate her practice in this area has helped many abuse and assault victims find closure and healing, and has held accountable sexual predators who engage in abuse and the institutions who ignore their misconduct.

Since joining Taylor & Ring 12 years ago, Weatherford has represented hundreds of abuse victims and obtained several multi-million-dollar verdicts and settlements including: a \$102 million verdict for victim who was abused by a music teacher over a period of three years; \$25.3 million verdict for a client who was sexually abused at the Westerly School in Long Beach; and a \$14 million settlement for two women who were victimized by their middle school teacher in Moraga.

**CONGRATULATIONS**  
**LARA SHORTZ**

Our Employment Advice, Counsel & Executive Disputes Chair, M&R’s Firm Recruiting Partner, and a *Los Angeles Business Journal* Woman of Influence once again. We couldn’t be prouder of the extraordinary work Lara does for the firm and on behalf of our clients. No matter the issues confronting them, occupants of the C-Suite can always count on Lara to cut through the noise and get them to first position by connecting as she counsels.

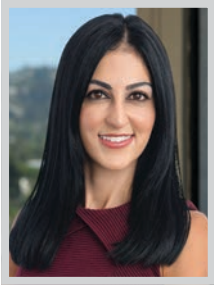


Where bona fide industry expertise meets unsurpassed advisory and practice area know-how

310.299.5500 | lshortz@mrlip.com

mrlip.com

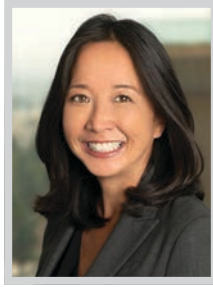
WOMEN OF INFLUENCE: ATTORNEYS



**PANTEA YASHAR**  
Partner  
Ervin Cohen & Jessup LLP

**P**antea Yashar advises on, litigates, and resolves a wide range of real estate and business disputes, with a focus on real property and projects in Southern California for large-scale commercial and residential landlords and developers. From protecting their rights to negotiating resolutions to contentious challenges involving developers, property owners, commercial lease holders, and buyers and sellers in the nation's most expensive property markets, Yashar adds tremendous value with her strategic handling of complex matters.

Yashar manages the full spectrum of her clients' legal needs and obligations. Yashar's creatively assertive resolution style centers around positioning clients purposefully from the outset and powerful client advocacy. Appreciated for her market savvy and big-picture vision, She has experience with all property types—shopping centers, mixed-use, retail, residential, industrial, and office buildings.



**STEPHANIE YONEKURA**  
Global Head of Investigations, White Collar and Fraud  
Hogan Lovells US LLP

**S**tephanie Yonekura is the global head of Hogan Lovells' Investigations, White Collar, and Fraud practice, comprised of more than 150 lawyers across 20 jurisdictions globally. Yonekura was previously acting U.S. attorney in the U.S. Attorney's Office for the Central District of California, the largest U.S. Attorney's office outside Washington D.C. Under her leadership, the office investigated the hacking of one of the world's largest entertainment companies.

Yonekura brings a unique perspective to internal investigations. Having served as a federal prosecutor for over 14 years, she knows the hot-button issues that are considered in every stage of any government investigation. In private practice, Yonekura uses her substantial experience in the trenches, in the courtroom, and as the chief law enforcement officer in Los Angeles to help clients understand the key issues, investigate matters strategically and surgically, and negotiate with and defend clients before law enforcement agencies around the world.



**ALICE YUAN**  
Partner  
Massumi + Consoli LLP

**A**lice Yuan is currently a partner of Massumi + Consoli LLP, where she counsels private equity and corporate clients in acquiring and investing in a wide range of public and private and domestic and international companies, as well as in other transactional and corporate matters. Yuan plays a pivotal leadership role as the firm continues to grow, serving as chair of the firm's Operations Committee, where she leads initiatives related to the firm's business operations. Alice also makes significant contributions to the firm's recruiting efforts.

Yuan stands out for her ability to provide exceptional legal counsel on complex transactions in a manner that enables her clients to quickly make key business decisions. She draws on her prior experience as a corporate development vice president at j2 Global. Her ability to balance legal decisions in the transactional context with business needs makes her an invaluable partner to clients and colleagues.



**ANNITA ZHONG**  
Partner  
Irell & Manella LLP

**A** partner at Irell & Manella LLP, Annita Zhong focuses on patent litigation, contested patent office proceedings and licensing in the U.S., the European Union and China. She has deep experience litigating before federal and state courts, the International Trade Commission, arbitral panels and the Patent Trial and Appeal Board.

Before law school, Dr. Zhong was a senior research scientist at General Electric's Global Research Center in Niskayuna, New York. Her engineering and research background enables her to digest new technologies quickly and has proven valuable in delivering significant victories for clients in complex litigation. She is well versed in technical areas such as semiconductor fabrication and packaging, computer architecture, telecommunications, artificial intelligence, renewable energy, and chemicals and materials. Among recent victories, Dr. Zhong was a principal member of the team that secured a \$300 million jury award for PanOptis in a patent suit against Apple.

LOS ANGELES BUSINESS JOURNAL

LAW SPOTLIGHT

ALIGN YOUR BUSINESS WITH OUR EXTENSIVE LEGAL PORTFOLIO

The **Los Angeles Business Journal** recognizes the crucial role that the Legal industry provides to help strengthen our business community. The Business Journal provides extensive coverage of the legal industry through custom supplements, industry lists and special events throughout the year. Reach our affluent business readers by strategically positioning your firm in the following issues:

**LISTS**

- Fastest Growing Private Companies
- Investment Banking Firms
- Largest Employers
- Largest Public Companies
- Law Firm
- Private Equity Firms
- Venture Capital Firms

**SPECIAL REPORTS**

- Largest Private Companies
- Legal & Professional Services

**LEADERS OF INFLUENCE**

- Labor & Employment Attorneys
- Litigators & Trial Attorneys
- Women Attorneys
- Minority Attorneys
- Most Admired Law Firms to Work For

**EVENTS**

- Top 100 Lawyers
- Corporate Counsel Awards
- Women's Leadership Symposium & Awards
- Real Estate Trends



For more information and to secure space, please contact [advertising@labusinessjournal.com](mailto:advertising@labusinessjournal.com)