



PROJECT NOMINEES

| DEVELOPER

| GENERAL CONTRACTOR

| ARCHITECT



15601 S. AVALON

- | Rexford Industrial
- | Pacific Construction Group
- | RGA Architects



6TH AND SAN JULIAN

- | Mercy Housing California
- | Suffolk
- | TCA Architects



2130 VIOLET ST.

- | Lowe
- | Swinerton
- | Ware Malcomb



800|900 CULVER POINTE

- | Northwood Investors LLC
- | Morley Builders / Benchmark Contractors, Inc.
- | RIOS



3516 SCHAEFER ST.

- | Redcar Properties, Ltd.
- | Del Amo Construction
- | RAC Design Build



821 TRACTION AVE. ADAPTIVE REUSE

- | 821 FM LLC.
- | Swinerton
- | Loescher Meachem Architects, Inc.

GROW

Choose a team that can help you achieve your goals

Powerful financial solutions tailored to your unique business needs

cbbank.com |



A Financial Services Company

Equal Housing Lender | Member FDIC

03.22



PROJECT NOMINEES

| DEVELOPER

| GENERAL CONTRACTOR

| ARCHITECT



843 N. SPRING ST.

- | Redcar Properties
- | Shawmut Design and Construction
- | LEVER Architecture



ALAMEDA INDUSTRIAL

- | PIMA
- | CEG Construction
- | OC Design & Engineering



900 WILSHIRE RENOVATION

- | Sterling Real Estate Group, LLC
- | Cal-City Construction
- | Struere



ATLAS HOUSE

- | Jamison Properties LP
- | Philmont Management Inc
- | Corbel Architects



9000 WILSHIRE

- | Skanska USA Commercial Development
- | Skanska USA Building Inc.
- | Neil M. Denari Architects & HLW



BMI

- | Cushman & Wakefield
- | Howard Building Corporation
- | HLW International



SHARPE
INTERIOR SYSTEMS
DRYWALL CONTRACTORS

**Congratulations to all the winners in this year's
Los Angeles Business Journal Commercial Real Estate Awards**





BMW DESIGNWORKS

- | Colliers International
- | GCX
- | Kevin Daly Architects



CALIFA FARMS

- | Hudson Pacific Properties
- | RAM Construction
- | The S/L/A/M Collaborative, Inc.



BRIDGE POINT GARDENA I AND II

- | Bridge Industrial
- | Oltmans Construction Co.
- | RGA Office of Architectural Design, Inc.



CASTLE ARGYLE APARTMENTS

- | Beacon Development Group / Human Good
- | Walton Construction
- | Relativity Architects



BRIDGE UNIVAR SANTA FE SPRINGS

- | Bridge Development Partners
- | Millie and Severson
- | Herdman Architecture + Design



CATHERINE SANTA MONICA PHASE II

- | Fifield Companies
- | Milender White Inc.
- | KFA Architecture



CLUNE
CONSTRUCTION

2023 LABJ AWARDS
CONGRATULATIONS TO THE
Winners and Nominees

©Genster / Benny Chan

CA License #732107

- CHICAGO
- DALLAS
- LOS ANGELES
- NEW YORK
- PHOENIX
- SAN FRANCISCO
- WASHINGTON, DC

ABOUT CLUNE

Clune Construction is an employee-owned, national general contractor, providing construction management services for some of the most respected companies in the world. With seven offices across the U.S., Clune manages over \$1 billion in projects annually and has been ranked as a Best Place to Work across the nation.



PROJECT NOMINEES

| DEVELOPER

| GENERAL CONTRACTOR

| ARCHITECT



CEDARS-SINAI LOS FELIZ URGENT CARE

- | Cedars-Sinai Health System
- | Pankow
- | Abramson Architects



CITIBANK LA FAIRFAX

- | Regency Centers
- | DEB Construction, LLC.
- | Gensler



CEDARS-SINAI MEDICAL CENTER / TORRANCE MEMORIAL MEDICAL CENTER AND MEDICAL OFFICE BUILDING

- | Cedars-Sinai Medical Center
- | Millie and Severson
- | c|a Architects



CO/RELATE WEST HAUSER

- | Canfield Development Inc.
- | Westside Contractors
- | Hochhauser Blatter Architecture & Planning



CHILDREN'S INSTITUTE, INC. WATTS CAMPUS

- | Children's Institute, Inc.
- | Oltmans Construction Co.
- | Gehry Partners, LLP.



CONFIDENTIAL PROJECT

- | Cushman & Wakefield
- | Clune Construction
- | Gensler



CONGRATULATIONS TO ALL THE 2023 COMMERCIAL REAL ESTATE AWARD NOMINEES



We Listen | We Care | We Collaborate | We Deliver



CONFIDENTIAL PROJECT

- | CIM Group
- | GCX
- | Harley Ellis Devereaux (HED)



THE DOHENY

- | Lenmar Doheny LLC
- | Duke Development
- | Albert Group Architects



THE DAIRY

- | The Luzzatto Company
- | GCX
- | HLW



THE ENCLAVE

- | The Ruth Group
- | GS Construction
- | 5+ Design



DEBBIE ALLEN DANCE ACADEMY

- | Debbie Allen Dance Academy
- | Build Group
- | Gensler



ENTRADA

- | LPC West
- | KPRS Construction Services, Inc.
- | Gensler



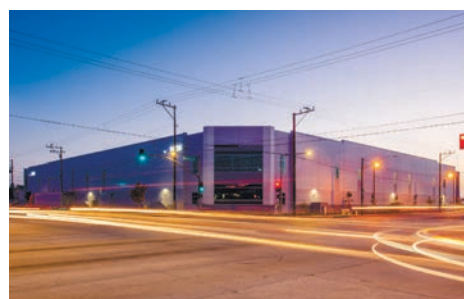
**CHILDREN'S INSTITUTE, INC.
WATTS CAMPUS WATTS, CA**

Nominated Categories
Community Impact &
Tenant Improvement



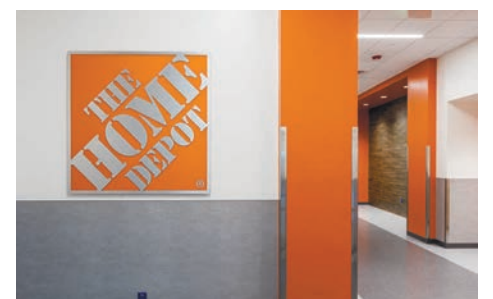
**TOYOTA LOGISTICS VEHICLE
DISTRIBUTION LONG BEACH, CA**

Nominated Categories
Sustainable & Industrial



**BRIDGEPOINT GARDENA
GARDENA, CA**

Nominated Categories
Industrial & Redevelopment



**HOME DEPOT
IRWINDALE, CA**

Nominated Category
Tenant Improvement



PROJECT NOMINEES

| DEVELOPER

| GENERAL CONTRACTOR

| ARCHITECT



ESPERANZA AT DUARTE STATION

- | MBK Rental Living
- | R.D. Olson Construction
- | AO Architects



FRIEDKIN GROUP – EUCLID CREATIVE OFFICE

- | The Friedkin Group
- | C.W. Driver
- | BA Collective



FEDORA & TRILBY APARTMENTS

- | CGI Plus
- | Frymer Construction
- | KFA Architects



THE GEORGIAN HOTEL

- | BLVD Hospitality + ESI Ventures
- | BCCI Construction
- | HLW International



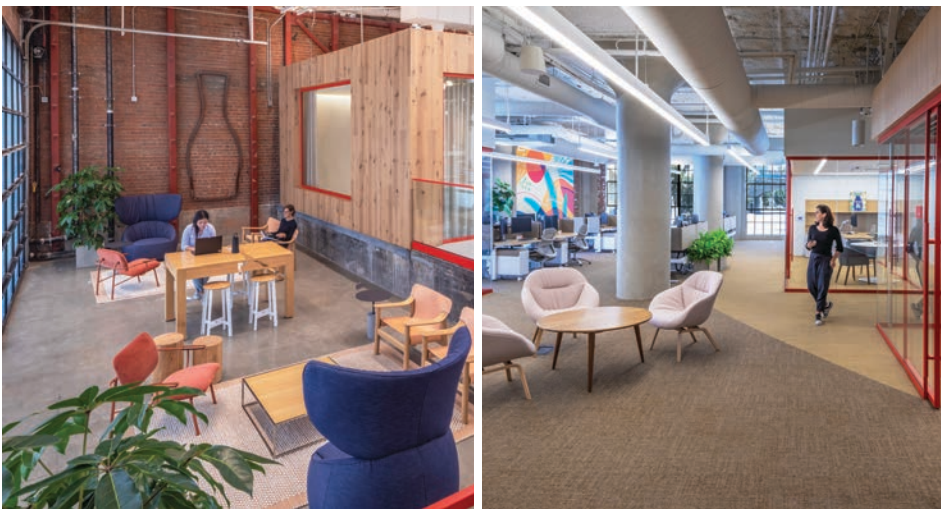
FIG + PICO

- | The Lightstone Group
- | Suffolk
- | Gensler



THE GRAND LA

- | Related Companies
- | Tishman Construction (AECOM)
- | Gehry Partners



CA CO CT FL GA IA MA PA RI

www.slamcoll.com



Congratulations RAM Construction

2023 Commercial Real Estate Awards

Los Angeles Business Journal

Los Angeles | Orange County | San Diego

www.ramconstruction-us.com



HOLLYWOOD ARTS COLLECTIVE

- | Thomas Safran & Associates
- | Morley Builders / Benchmark Contractors, Inc.
- | BSB Design (formerly Withee Malcolm Architects)



HYPEROBJECT

- | HyperObject Industries
- | GCX
- | Wolcott Architecture



HOME DEPOT IRWINDALE

- | Prologis
- | Oltmans Construction Co.
- | RGA, Office of Architectural Design



JASPER

- | Cityview
- | WPIC Construction
- | AC Martin



THE HUNTINGTON

- | The Richman Group of California, LLC
- | Milender White Inc.
- | DesignArc



LARCHMONT MERCANTILE

- | Christina Development Corporation
- | Del Amo Construction
- | Gensler




Thank you

To all our partners who contributed to Topgolf El Segundo - we could not have done it without you!

Topgolf
City of El Segundo
Aria Group Architects, Inc.
DRC Engineering, Inc.
John A Martin & Associates, Inc.
Telios Corporation
Leighton Consulting, Inc.
American Landscape
Anning Johnson
Assa Abloy
Berg Electric

CA Signs
Coast Insulation
Controlair
Courtney, Inc.
Crown Fence
Elite Glazing
Frank Smith Masonry
Miller Environmental
ISEC Incorporated
KONE
McCandless Tile

McWhirter Steel
MS Rouse
Partition Specialties
Pacific Decorative Concrete Incorporated
Pfeiler & Associates
QPS
Qwest Engineering
Rebar Engineering
San Diego Paint Pros
Standard Drywall

Southwest Doors
Stumbaugh
Southwest Fire Protection
Trademark Concrete
US Smoke & Fire
Van Diest Bros
VNSM
Western Paving

Topgolf El Segundo
A finalist in the Los Angeles Business Journal's 2023 Commercial Real Estate Awards



PROJECT NOMINEES

| DEVELOPER

| GENERAL CONTRACTOR

| ARCHITECT



LAS FLORES APARTMENTS

- | Community Corp of Santa Monica
- | R.D. Olson Construction
- | DE Architects



MGAC LA OFFICE

- | N/A
- | HITT Contracting
- | SOM (Skidmore, Owings & Merrill LLP)



LONG BEACH CITY COLLEGE - MULTI-DISCIPLINARY ACADEMIC FACILITY

- | Long Beach City College
- | C.W. Driver
- | HPI Architecture



THE MIDAS

- | Mason Yoon, GRCLA, LLC
- | Wilshire Construction, LP
- | Lahmon Architects



MAGNOLIA VILLAS

- | EAH Housing
- | Walton Construction Inc.
- | DE Architects, AIA



MR. T

- | Park Lane Projects
- | GCX
- | Studio Como

YAIR HAIMOFF, SIOR



RANDY CUDE



ANDREW GHASSEMI



MATT SREDEN



BARRY JAKOV



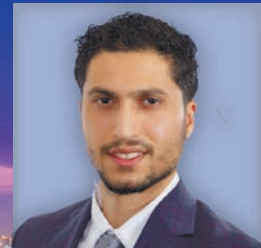
ZACHARY RABINOWITZ



CONNOR QUAN



DANIEL HAKIMPOUR



Congratulations

TO OUR 2023 LA BUSINESS JOURNAL CRE AWARD NOMINEES



MUSEUM OF TOLERANCE

- | Simon Wiesenthal Center, Inc.
- | Sierra Pacific Constructors
- | Yazdani Studio of CannonDesign



OVATION HOLLYWOOD

- | DJM Capital
- | W.E.O'Neil Construction
- | Gensler



NINE THOUSAND ONE

- | GPI Companies
- | Build Group Construction Company, Inc.
- | Steinberg Hart



POMONA COLLEGE - CENTER FOR ATHLETICS, RECREATION AND WELLNESS

- | Pomona College
- | C.W. Driver
- | SCB Architects



ONE LEGACY CAMPUS

- | One Legacy
- | PNG Builders
- | LA-Architects, Inc.



THE RISE KOREATOWN

- | Rescore Property Corp.
- | Rudolph and Sletten, Inc.
- | Nadel Architecture and Planning



Cedars-Sinai Medical Center/
 Torrance Memorial Medical Center
 Developer: Cedars-Sinai Medical Center
 Architect: cja ARCHITECTS

CONGRATULATIONS on being **NOMINATED** for a
LABJ 2023 Commercial Real Estate Award

Bridge Point Santa Fe Springs IV
 Developer: Bridge Industrial
 Architect: Herdman Architecture + Design





PROJECT NOMINEES

| DEVELOPER

| GENERAL CONTRACTOR

| ARCHITECT



ROCNATION

- | 953 N. Sycamore (LA), LLC
- | Sierra Pacific Constructors
- | GP Architecture



SP7 / SAN PEDRO HOUSE

- | Skid Row Housing Trust
- | Snyder Langston Residential
- | KFA Architecture



SAFFY'S

- | Bestia
- | GCX
- | NCA Studios



TOP GOLF EL SEGUNDO

- | Top Golf USA, Las Vegas, LLC
- | McCarthy Building Companies, Inc.
- | Aria Group Architects, Inc.



SILICON VALLEY BANK

- | Colliers International
- | GCX
- | Studios Architecture



TOYOTA LOGISTICS SERVICES VEHICLE PROCESSING AND DISTRIBUTION CENTER (VDC)

- | Toyota Motor Sales, USA Inc.
- | Oltmans Construction Co.
- | Lionakis



FOR YOUR **MEDICAL CONSTRUCTION** NEEDS

Parker Brown Inc. has created a specialty in building medical clinics. Talk to us about your needs

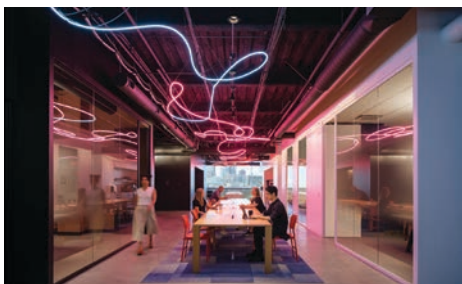


Parker Brown Inc

21116 Vanowen St. Canoga Park, CA 91303
info@parkerbrowninc.com www.website.com



Contact for any support
818-999-5078



TWITCH LOS ANGELES

- | Twitch Interactive, Inc.
- | HITT Contracting Inc.
- | Gensler



WALTZMAN INSTITUTE PLASTIC SURGERY AND AESTHETICS

- | Mike Bardi
- | Parker Brown Inc.
- | GPA Architecture



UCLA GAYLEY HEIGHTS APARTMENTS

- | University of California, Los Angeles
- | PCL Construction
- | STUDIOS Architecture



THE WATERMARK

- | Gelt Reseda Development, Llc
- | WPIC Construction, LLC
- | Albert Group Architects



VOX AT CUMULUS

- | Carmel Partners
- | Carmel Partners
- | TCA Architects



YAAMAVA' RESORT AND CASINO AT SAN MANUEL

- | San Manuel Band of Mission Indians
- | Penta Building Group
- | Gensler



OneLegacy Headquarters | Azusa



Armenian American Museum | Glendale



AES Fluence BESS | Long Beach



URM Angeles House | Los Angeles



PICASSO BHOWMIK Vice President
p.bhowmik@pacnatgroup.com | 626.256.9595 | www.png.builders

Building Value. Building Trust. Building People.