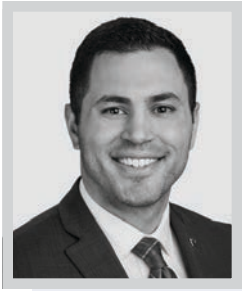




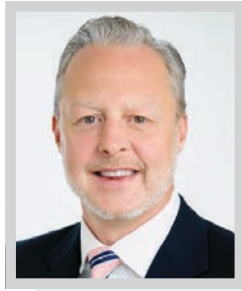
BROKER NOMINEES



JEFF ABRAHAM
Newmark



ERIC ADAMS
Newmark



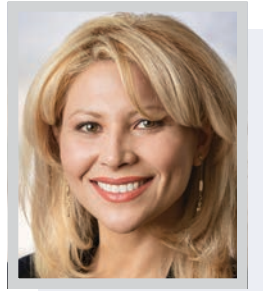
MARTIN D. AGNEW
Marcus & Millichap



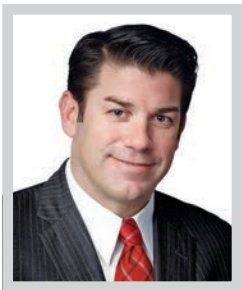
PATRIC AMOS
CBRE



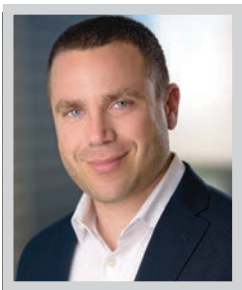
JOHN ANTHONY
Kidder Mathews



BARBARA ARMENDARIZ
SharpLine



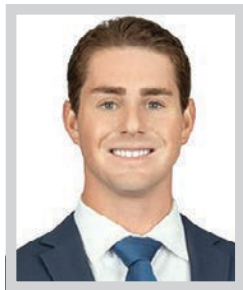
MICHAEL ARNOLD
NAI Capital Commercial



DAVID ASCHKENASY
Commercial Asset Group



SHANE AVERA
Mathews Real Estate
Investment Services



ALEX BANKS
Coldwell Banker Commercial



FRANK BARBANO
Barbano Realty, Inc.



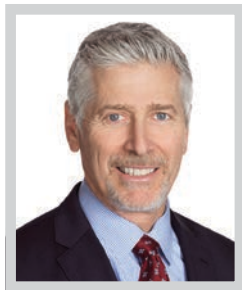
JOHN BARGANSKI
Brookfield Properties



BILL BAUMAN
Newmark



MAXX BAUMAN
Mathews Real Estate
Investment Services



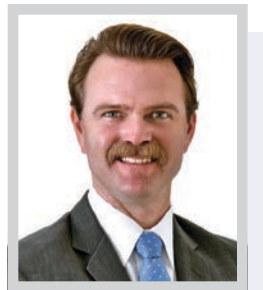
HARVEY BEESEN
Kidder Mathews



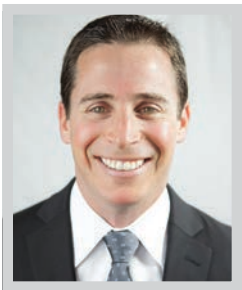
KEVIN BENDER
JLL



JOHN BENETTI
Commonwealth Partners



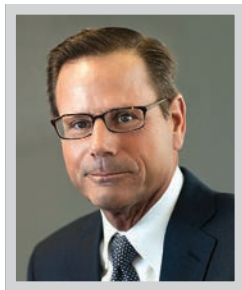
CHRIS BENTON
Newmark



WARREN BERZACK
Lee & Associates –
LA North/Ventura



PETE BETHEA
Newmark



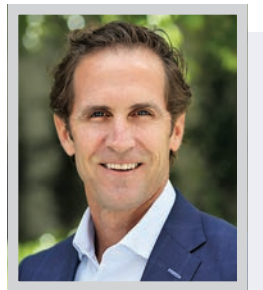
DAVID BLACK
Marcus & Millichap



ROBERT BLACK
Kidder Mathews



BILL BLOODGOOD
Newmark



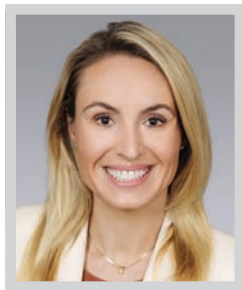
STEVE BLUE
Swift Real Estate Partners



MICHAEL BOGLE
CBRE



STEVE BOHANNON
Cushman & Wakefield



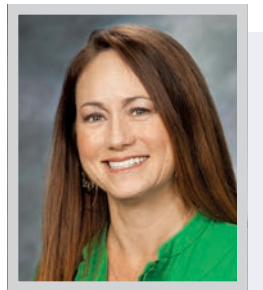
KRISTEN BOWMAN
Colliers



DRAGANA BOZILOVIC
ili Commercial Real Estate



ANDREW BRINER
Newmark



VALERIE BRUNNER
CBRE

Our expertise. Your bottom line.

In 2022, CBRE consistently delivered outcomes that drive business and bottom-line performance for our clients across Los Angeles County. We congratulate the following *LABJ Real Estate Award* finalists for setting the bar and being exemplary in the industry.

DOWNTOWN LA OFFICE

Phillip Ruhl & John Zanetos

Finalists
Best Office Lease of the Year

John Zanetos

Finalist
Best Office Lease of the Year

WEST LA OFFICE

Dean Zander & Stew Weston

Finalists
Best Multi-Family Deal of the Year

GLENDALE OFFICE

Michael Bogle

Finalist
Best Industrial Sale of the Year

Doug Marlow

Finalist
Best Office Lease of the Year

Steve Nelson

Finalist
Best Retail Lease of the Year

SOUTH BAY OFFICE

Tres Reid

Finalist
Brokerage Executive of the Year

Finalist

Best Industrial Lease of the Year



Lewis C. Horne

President,
GLA-OC-IE
lew.horne@cbre.com
+1 213 613 3305

Robert Peddicord

Executive Managing
Director, South Bay
robert.peddicord@cbre.com
+1 213 613 3346

Andrew D. Ratner

Executive Managing
Director, West LA
andrew.ratner@cbre.com
+1 213 613 3320

Jessica Lall

Managing Director,
Downtown LA
jessica.lall@cbre.com
+1 213 613 3560



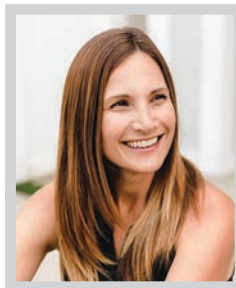
BROKER NOMINEES



RICK BUCKLEY
NAI Capital Commercial



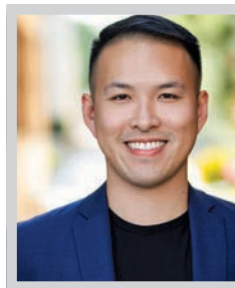
NANCY BUSH
Lyon Stahl Investment
Real Estate



AMANDA CALOF
CBRE



RYAN CAMPBELL
NAI Capital Commercial



RICHARD CHENG
Urbanlime Real Estate



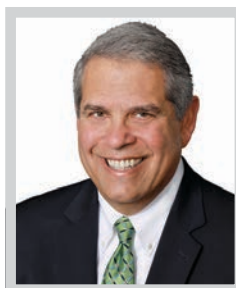
JAYSEN CHIARAMONTE
Kennedy Wilson



TOMMY CHRISTMAN
Swift Real Estate Partners



MICHAEL CONDON, SR.
Cushman & Wakefield



CHRISTOPHER COOPER
Avison Young



KEVIN COOPER
Delphi Business Properties Inc.



FREDERICK CORDOVA
Corion Enterprises



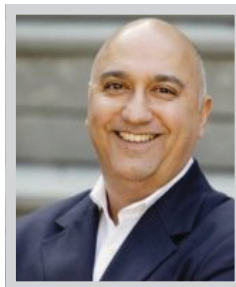
TIM CRISSMAN
Re/Max Crissman
Commercial Services



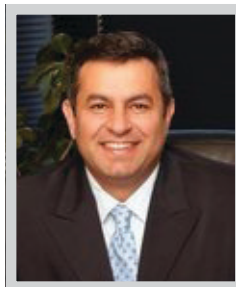
RANDY CUDE
Spectrum Commercial
Real Estate



JACK CULLEN
Swift Real Estate Partners



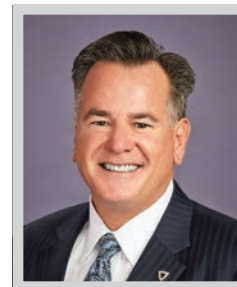
SIMON DARVISH
Westbrook Advisors Inc.



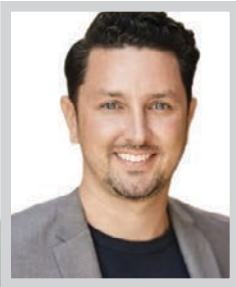
SEAN DARYANI
Re/Max of Valencia



REMY DAVARENNE
CBRE



JOHN DEGRINIS
Newmark



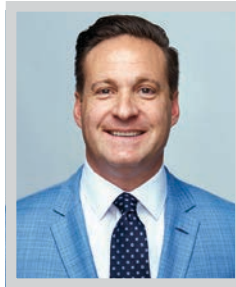
TYLER DEL RE
Urbanlime Real Estate



LALO DIAZ
JLL



ANDREW DILFER
Kidder Mathews



NICK DIPAOLO
Newmark



SANDY DUNKLEY
Equity Real Estate



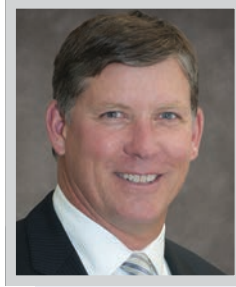
DEMARCO DURAN
Savills



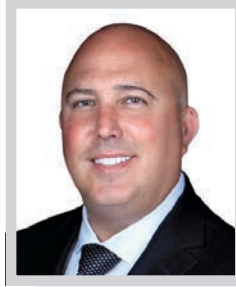
PATRICK DUROSS
Newmark



BILL DURSLAG
CBRE



TOM DWYER
CBRE



MATT EHRLICH
NAI Capital Commercial



JOHN ERICKSON
Colliers



DAN FAGAN
Urbanlime Real Estate



Accounting | Tax | Advisory

Scaling TO NEW HEIGHTS

Don't wait for the future:
PLAN FOR IT.

Take a proactive approach to your business with CBIZ's commercial real estate services.

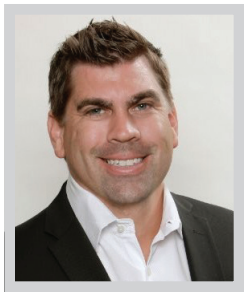
Our team of experts understands the changing regulations and local market trends affecting the real estate industry. We will assist you in meeting them while giving you tailored financial solutions to focus on what really matters: building success.

TO LEARN MORE ABOUT WHAT'S ON THE HORIZON
CONTACT US TODAY: CBIZ.COM/LOSANGELES

MHM (Mayer Hoffman McCann P.C.) is an independent CPA firm that provides audit, review and other attest services, and works closely with CBIZ, a business consulting, tax and financial services provider. CBIZ and MHM are members of Kreston Global, a worldwide network of independent accounting firms.



BROKER NOMINEES



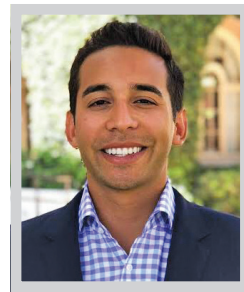
GRANT FULKESON
Lee & Associates –
LA North/Ventura



SEAN FULP
Colliers



DAWN FUQUA
illi Commercial Real Estate



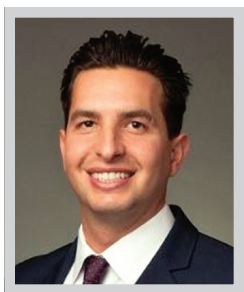
JAVI GALVAN
Delphi Business Properties, Inc.



GREG GERACI
Colliers



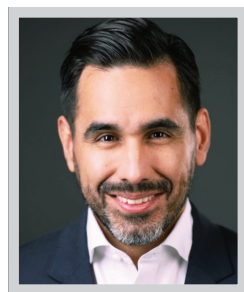
ANDREW GHASSEMI
Spectrum Commercial
Real Estate



IAN GILBERT
Brookfield Properties



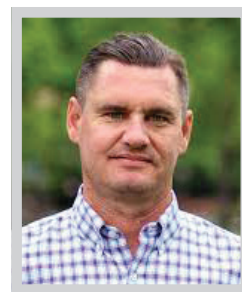
CHRISTOPHER GIORDANO
Kidder Mathews



RODRIGO GONZALEZ
DEODATE



JOE GRABIEC
Institutional Property Advisors



RYAN GRANITO
Fundrise



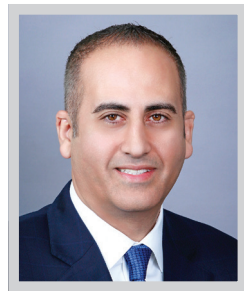
JB GREEN
Colliers



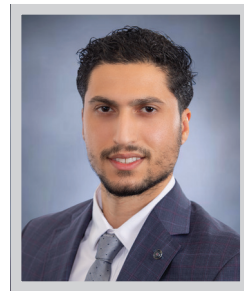
KEVIN GREEN
Institutional Property Advisors



GEORGE GROSS
Coldwell Banker Commercial



YAIR HAIMOFF
Spectrum Commercial
Real Estate



DANIEL HAKIMPOUR
Spectrum Commercial
Real Estate



ROB HANNAN
Newmark



RYAN HARDING
Newmark



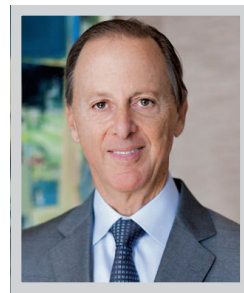
BRET HARDY
Newmark



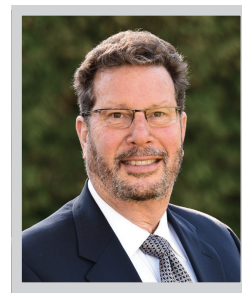
DAVID HARRINGTON
Mathews Real Estate
Investment Services



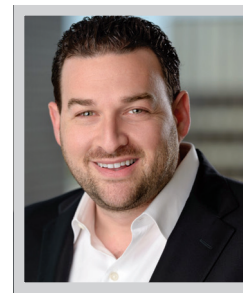
GREG HARRIS
Institutional Property Advisors



ROBERT HELD
Held Properties



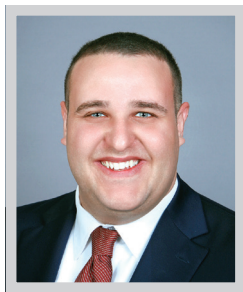
DAVID HOFFBERG
Delphi Business Properties, Inc.



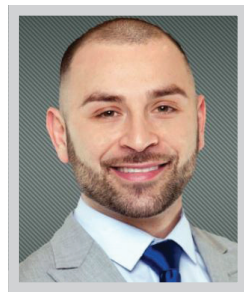
DAVID ICKOVICS
Commercial Asset Group



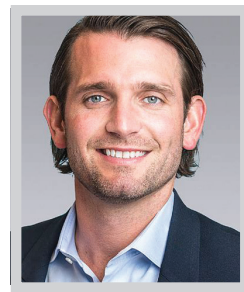
ROB IPPOLITO
Newmark



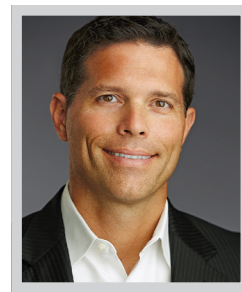
BARRY JAKOV
Spectrum Commercial
Real Estate



SEVAK KESHISHIAN
Marcus & Millichap



TERENCE KIRK
Colliers



CRAIG KISH
Newmark



MICHAEL KOLCUM
Newmark



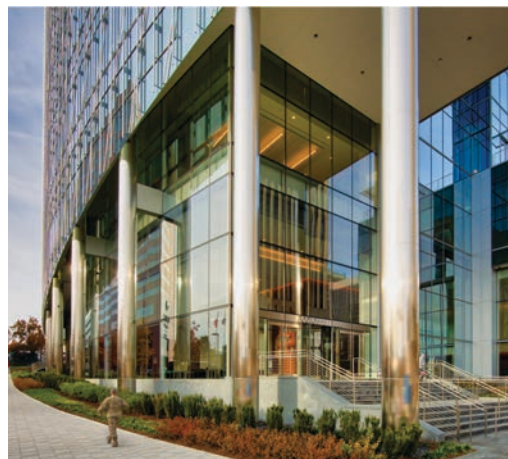
BEYOND THESE WALLS...

To do more than build. To create. To innovate. And to do it with a holistic, intelligent balance of art and science that's unmatched anywhere.

We see our work through the eyes of the people who will use them every day. Through their eyes, we see places of entertainment, education, innovation, technology, healing and research.

The result? Powerful structures with impacts that reach far beyond these walls.

CLAYCO
THE ART & SCIENCE OF BUILDING
claycorp.com





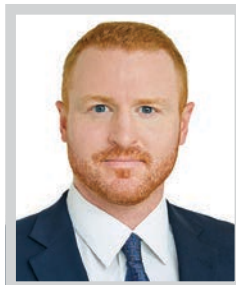
BROKER NOMINEES



LARRY KOSMONT
Kosmont Realty



JIM KRUSE
Kidder Mathews



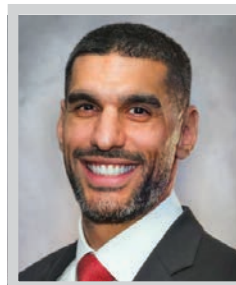
JOHN LALLY
Marcus & Millichap



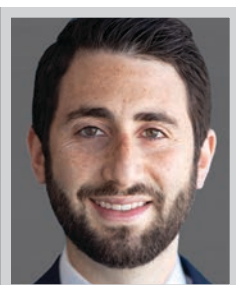
JONATHAN LARSEN
Avison Young



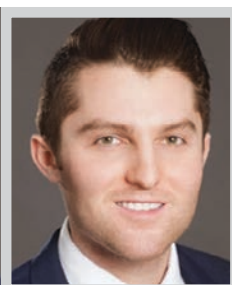
ERIC LASTITION
Newmark



ANDREW LEFF
Marcus & Millichap



SAM LIBEROW
Marcus & Millichap



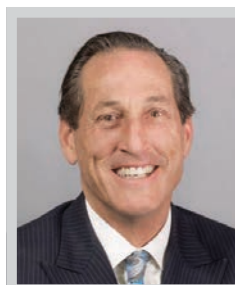
RYAN LIN
CBRE



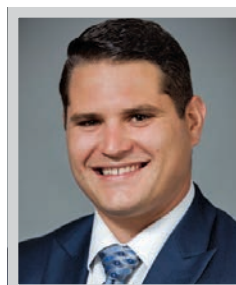
JIM LINN
Newmark



CASEY LINS
Kidder Mathews



JEFF LOUKS
Marcus & Millichap



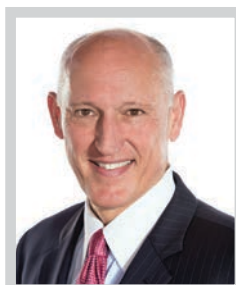
MATTHEW LUCHS
Marcus & Millichap



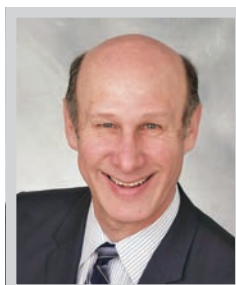
GEOFFREY LUDWIG
Newmark



BRETT LYON
Lyon Stahl Investment
Real Estate



DAVE MACKENBACK
Cushman & Wakefield



MIKE MALICK
Marcus & Millichap



TOM MALONEY
Newmark



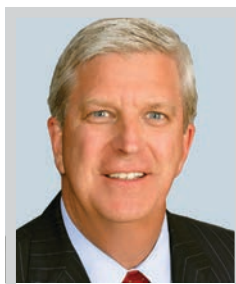
DOUG MARLOW
CBRE



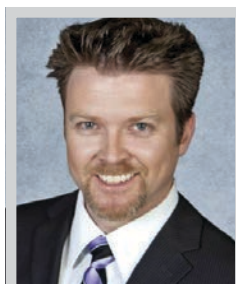
LAWSON MARTIN
Cresa



SIMON MATTOX
CBRE



PAT MCCROSKEY
CBRE



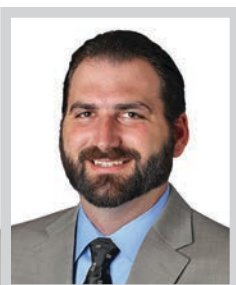
LONNIE MCDERMOTT
Marcus & Millichap



MIKE MCKINNEY
Lyon Stahl Investment
Real Estate



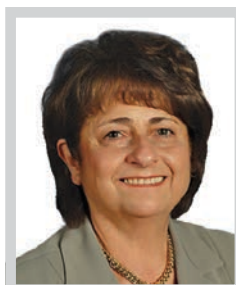
JOHN MCMILLAN
Newmark



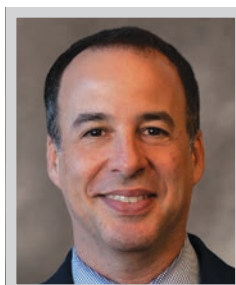
SEAN MCNEE
Kidder Mathews



JOAQUIN MEDRANO
Fundrise



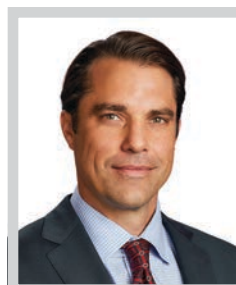
SHERI MESSERLIAN
NAI Capital Commercial



KEN MEYERSON
CBRE



BRANDON MICHAELS
Marcus & Millichap



KYLE MILLER
Newmark



The market is shifting, but the opportunities remain endless.

In this dynamic climate, Colliers continues to cultivate an environment of growth. Our robust platform and entrepreneurial spirit allow us to harness the potential of every market and every opportunity.

Join us and accelerate your success.



Amanda Spangler
Managing Director
Inland Empire & Orange County



Jodie Poirier
Executive Managing Director
Greater Los Angeles



Ricardo Pacheco
Managing Director
Los Angeles



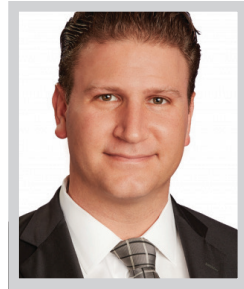
BROKER NOMINEES



BRENDAN MONAGHAN
Barbano Realty, Inc.



TONY MORALES
JLL



ANTHONY MUHLSTEIN
Newmark



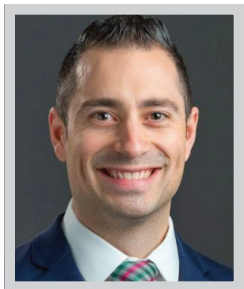
TODD NATHANSON
illi Commercial Real Estate



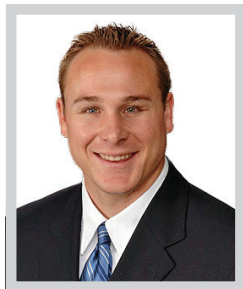
STEVE NELSON
CBRE



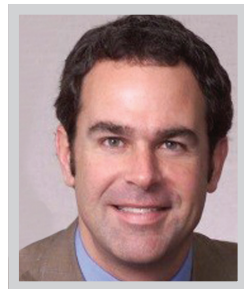
EDDY NEVAREZ
Marcus & Millichap



FILIP NICULETE
Marcus & Millichap



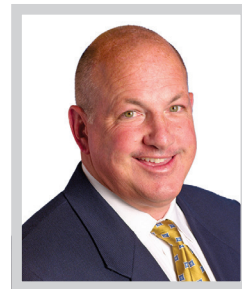
BRIAN NIEHAUS
JLL



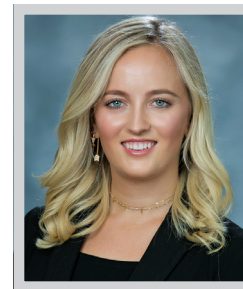
DAVID NORIE
CBRE



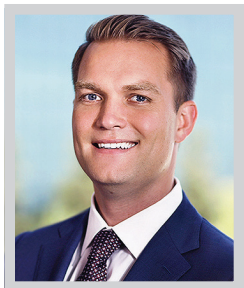
GREG OFFSAY
illi Commercial Real Estate



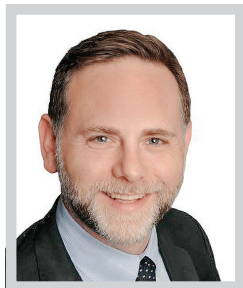
JOHN OLLEN
Newmark



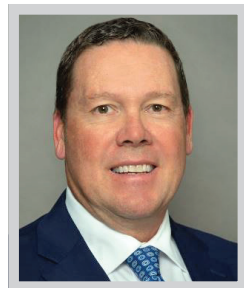
LAUREN PEDDICORD
CBRE



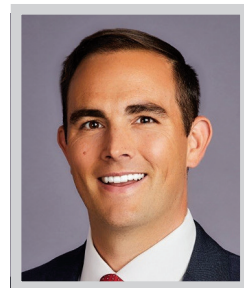
BILL PEDERSEN
Matthews Real Estate
Investment Services



ASHER PERGAMENT
illi Commercial Real Estate



KEITH PHILLIPS
Marcus & Millichap



RYAN PLUMMER
Colliers



GERALD PORTER
Cresa



JACK POSTHAUER
JLL



JEFF PUFFER
Delphi Business Properties, Inc.



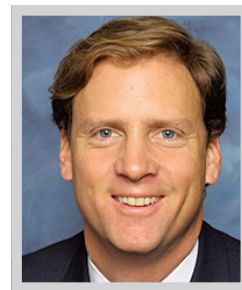
CONNOR QUAN
Spectrum Commercial
Real Estate



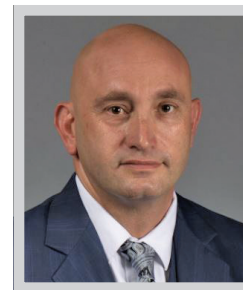
ZACK RABINOWITZ
Spectrum Commercial
Real Estate



DANIEL RAINER
JLL



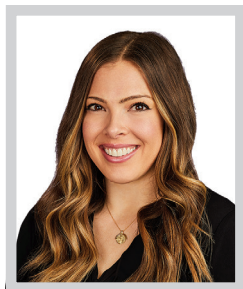
ART RASMUSSEN
CBRE



LIOR REGENSTREIF
Marcus & Millichap



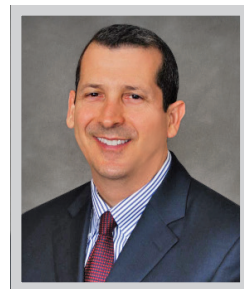
TRES REID
CBRE



KELLY REINKER
Newmark



DAN RILEY
CBRE



BENNETT ROBINSON
CBRE



RYAN ROTHSTEIN-SERLING
Marcus & Millichap



ROB RUBANO
Cushman & Wakefield



Before we build a workplace, we build a relationship.

At KPRS, we create modern workplaces where people thrive. Whether it's making flexible structures for future growth or including features that promote work-life balance to attract and retain talent, we listen to our clients' needs and realize their visions. Build with us and build on a foundation of trust.

**Let's build
together.**



BROKER NOMINEES



GLENN RUDY
Newmark



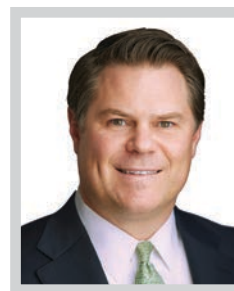
PHILLIP RULH
CBRE



STEVEN SALAS
Newmark



JULIANA SAMPSON
CBRE



JEFF SANITA
Newmark



BRETT SANSON
Marcus & Millichap



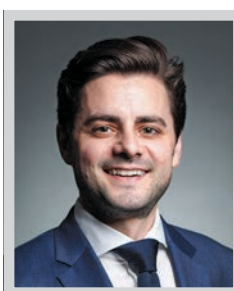
GLEN SCHER
Marcus & Millichap



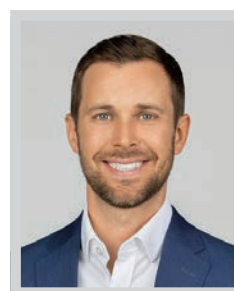
SCOTT SCHINDLER
JLL



SCOTT SCHUMACHER
Newmark



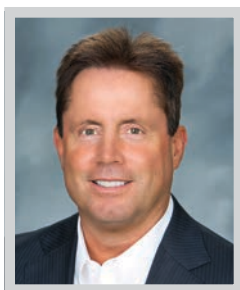
NICK SCRIBANI
Newmark



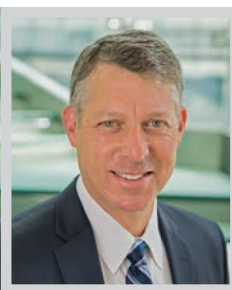
JOHN SCRUGGS
Newmark



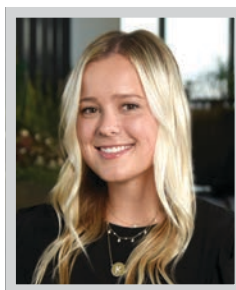
TOM SEXTON
NAI Capital Commercial



KEVIN SHANNON
Newmark



LEE SHAPIRO
Kennedy Wilson



KELLI SNYDER
CBRE



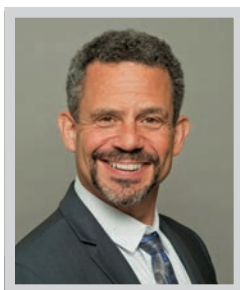
FRANK SOBOLESKE
Vincovinc Realty Group (VVRG)



MANVEL SOLAKIAN
Coldwell Banker
Hallmark Realty



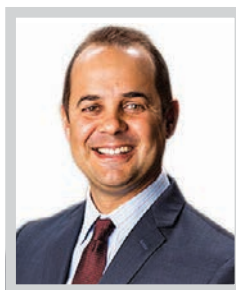
STEVE SOLOMON
Colliers



TONY SOLOMON
Marcus & Millichap



MATT SREDEN
Spectrum Commercial
Real Estate



WOODY STAHL
Lyon Stahl Investment
Real Estate



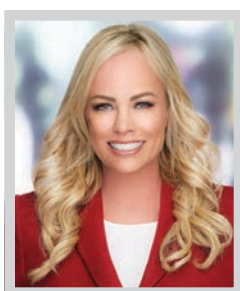
KYLE STANICH
Colliers



LUKE STAUBITZ
Kidder Mathews



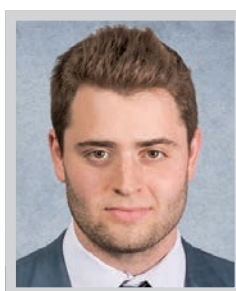
CHRISTOPHER STECK
Kidder Mathews



KIMBERLY STEPP
Stepp Commercial



ROBERT STEPP
Stepp Commercial



MICHAEL STERMAN
Marcus & Millichap



TIM STEURNOL
NAI Capital Commercial



DUSTIN STOLLY
Newmark



GREG STUMM
Newmark



BRIDGE POINT GARDENA I & II

**NOMINATED FOR LABJ'S
PROJECT OF THE YEAR**



**THANK YOU TO CHRIS SHEEHAN,
MIKE FOLEY, AND CONNER REEVES**
of Colliers International for representing
Bridge in the marketing and leasing of
the project.

LOS ANGELES/SAN FRANCISCO | CHICAGO | NEW JERSEY | NEW YORK | MIAMI | SEATTLE | LONDON

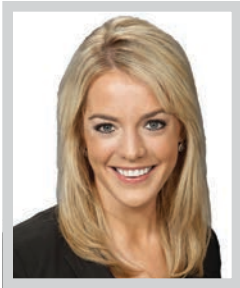
LOS ANGELES/SAN FRANCISCO OFFICE

11100 Santa Monica Blvd., Suite 700, Los Angeles, CA 90025

WWW.BRIDGEINDUSTRIAL.COM



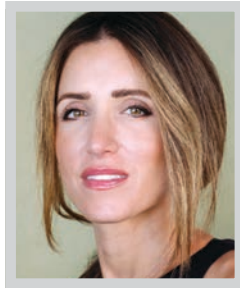
BROKER NOMINEES



LAURA STUMM
Newmark



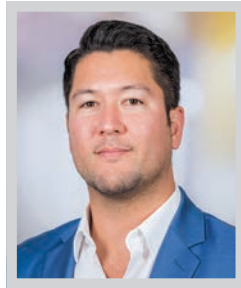
MIKE TINGUS
Lee & Associates –
LA North/Ventura



LORENA TOMB
Urbanlime Real Estate



JAMES TRAVERS
Cresa



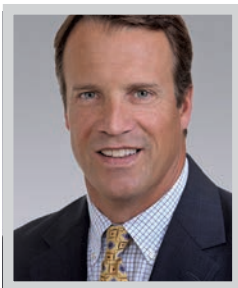
LUKE TROEDSON
Savills



BILL UKROPINA
Coldwell Banker Commercial



ROB URY
Beta



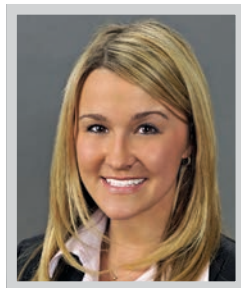
JOHN WADSWORTH
Colliers



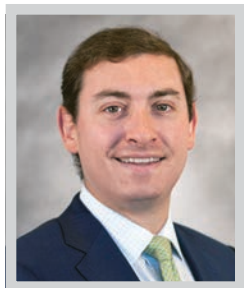
TIM WALLACE
Cushman & Wakefield



ROB WALLER
CBRE



JACLYN WARD
JLL



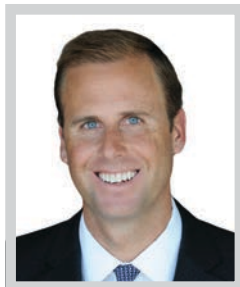
ZACHARY WEIL
CBRE



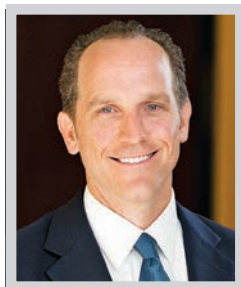
STEW WESTON
CBRE



KEN WHITE
Newmark



DANNY WILLIAMS
Newmark



DANIEL WITHERS
Matthews Real Estate
Investment Services



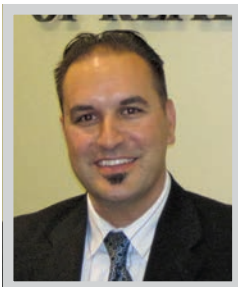
AUSTIN WOLITARSKY
CBRE



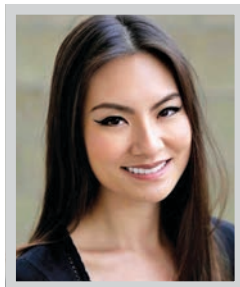
JOSH WROBEL
JLL



JOSH YARIS
Marcus & Millichap



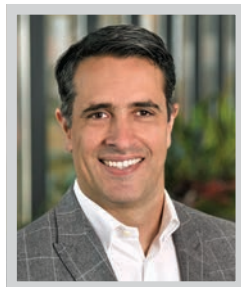
JOHN YERESSIAN
John Yernessian & Associates



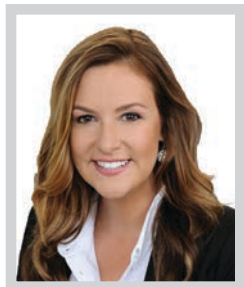
JENNIFER YIP
JLL



DEAN ZANDER
CBRE



JOHN ZANETOS
CBRE



SALLY ZESUT
Avison Young



MATTHEW ZIEGLER
Marcus & Millichap

CONGRATULATIONS TO OUR 2023 BROKER NOMINEES