

WOMEN OF INFLUENCE: CONSTRUCTION, ARCHITECTURE & ENGINEERING



WELCOME TO THE FOURTH EDITION OF OUR ANNUAL SUPPLEMENT HONORING LA'S MOST INFLUENTIAL WOMEN IN the construction, architecture and engineering fields.

The women who make their way to become standouts in these historically male-dominated fields are truly pioneers. There's still a way to go for representation in the building game, but the needle is moving, and the industry offers great opportunities for advancement for women.

There are some particularly stellar construction professionals in the LA region who happen to be women and we've alphabetically listed some of the best of them here, along with information about their careers.

Congratulations to the extraordinary, trailblazing women who made this list and thank you for your contributions to the Los Angeles economy ... and skyline.

Methodology: The professionals featured in these pages did not pay to be included. Their profiles were drawn from nomination materials submitted to the Los Angeles Business Journal. Those selected for inclusion were reviewed by the editorial department and chosen based on a demonstration of impact made on the profession and on the Los Angeles community.

CONSTRUCTION, ENGINEERING & ARCHITECTURE

**CASSY AOYAGI**

*President and Co-Founder
FormLA Landscaping*

Cassy Aoyagi has built a reputation based on the profound environmental and aesthetic impact of her work, as well the way in which she has raised the bar for the industry. Aoyagi co-owns and leads FormLA Landscaping. She is one of the few women leading landscaping companies with construction and maintenance divisions, and on a short list of LA landscaping professionals that hold both LEED and Sustainable SITES certifications.

Aoyagi's dedication to sustainability, brought to life through the business, has made a profound impact on LA's resilience to climate change, wildfire, and water positivity. She and her team have replaced more than 200,000 square feet of thirsty lawn with lush, leafy, wildlife-supporting habitats. As a result, each year, the company now saves LA well over 10 million gallons of water and reduces air pollution equivalent to eliminating 59 annual commutes from LA roads, among other impactful accomplishments.

**GIOVANNA BRASFIELD**

*CEO and Principal Consultant
Brasfield & Associates*

Dr. Giovanna Brasfield, commonly known as "Dr. G," has many significant highlights in her career in construction leading diversity & inclusion for large general contractors both in commercial and civil construction. She recently served as the highest ranking African American in the US and Canada for Flatiron's Southwest Division as the vice president of project diversity & inclusion leading contract commitments for the Los Angeles World Airport (LAWA)'s Automated People Mover Project (APM) for small business engagement, local workforce inclusion, and youth education.

In October 2021, Dr. G has taken such knowledge and experience to relaunch her consulting firm "Brasfield & Associates." As a consultant, she can serve more firms within the construction industry with her expertise in DEI and aiding companies with project pursuits in meeting contractual requirements that engage women, diverse businesses, local workforce, and youth engagement.

**ADAEZE CADET**

*Design Principal
HOK*

Adaeze Cadet's architectural career breaks barriers and misperceptions about the capability of Black women in architecture. Over the past 15 years she has successfully performed in multiple leadership positions and produced exceptional designs praised by the likes of Weherville, Lonny Magazine and Design Milk, and continuously adds strength to her design teams and mentees.

HOK's LA studio is comprised of 75% female leadership and Cadet is currently the first female design principal at HOK, opening the door for future female design leaders. She has already become a significant influence, shaping the firm with her extraordinary integrity and creativity. As design principal she is currently working on various large-scale entertainment, commercial and science & technology projects among other disciplines in the studio. Additionally, Cadet was an instrumental design team leader in winning the \$220 million-dollar, 241-key Robertson Lane Hotel in West Hollywood.

**SHARON CHRISTENSEN**

*Administrative Manager
Howard Building Corporation*

Sharon Christensen joined Howard Building Corporation early in her career and, over the last 14 years, she has not only grown into an asset to the company – she has grown into a leader.

Christensen currently oversees all personnel in Howard Building Corporation's Los Angeles office. More than being able to lead a diverse group of people, she has the keen ability to inspire. She motivates her employees to continue to learn and grow, stand up for what they believe in, and give back to the community. As a female leader in the construction industry, Christensen has demonstrated that it is possible to succeed and make a difference through compassion, kindness, and fortitude. She is deeply passionate about bringing diversity into the construction industry, and she works tirelessly alongside the HR department to make HBC a great place to work for everyone.

W·E·O'NEIL**Congratulations****HANH VU**

**for being selected as one of LABJ's
Women of Influence: Construction,
Architecture, and Engineering.**

weoneil.com



STREAMLINE BUILDERS
WOULD LIKE TO CONGRATULATE
ELISE JOHNSON

On being one of the Los Angeles
Business Journal's Outstanding Women
in Construction and Architecture!

As our world changes around us, those who lead become more important and essential to the growth of everyone around them. Elise Johnson elevates those around herself with a commitment to partnerships, authenticity, empathy, and a shared vision where everyone rises with the tides. Her leadership inspires us as a company to grow personally through our profession, and for that we thank you.

Streamline Builders is honored to pay this tribute to an incredible woman and the contribution she's made to the construction industry.

**Bracing the Future Through our
Commitment to You**



**STREAMLINE
BUILDERS, INC.**



Premier Multifamily Renovations

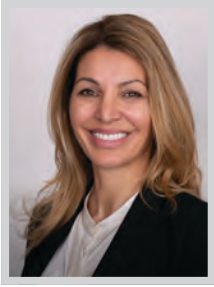
Pre-construction | Repositioning | Design-Build | Renovations

San Fernando Valley | Los Angeles County | Orange County

streamlinebuild.com



CONSTRUCTION, ENGINEERING & ARCHITECTURE

**VESNA CONROY**

Operations Manager
Turner Construction Company

Vesna Conroy is a construction operations manager with more than 20 years of experience in the design and construction industry. Starting her career as an architect in Belgrade, Serbia, she came to Los Angeles in 2003 as a senior project engineer for Turner Construction Company.

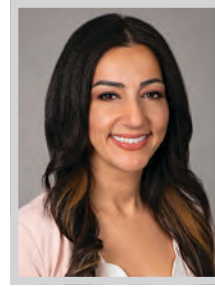
Since moving to the Los Angeles area 17 years ago, Conroy has been a driving force working behind the scenes on some of the region's most complex and iconic building projects. She has a demonstrated history of successfully managing complex multi-billion-dollar projects such as the Wilshire Grand Center in downtown Los Angeles and most recently the SoFi Stadium and entertainment complex – home of Los Angeles Rams and Chargers. Hospitality construction has been a passion for Conroy. With the ability to strike a balance between construction and architecture, she is a valuable partner for owners and architects alike.

**JESSICA DRAKE**

Senior Project Manager
Swinerton Builders

Jessica Drake has been in the construction industry for 15 years, joining Swinerton as a Project Engineer in 2009. She has risen the ranks in the 12 years since and is currently serving as a senior project manager. She attended the University of Southern California, where she earned her bachelor's degree in Architecture.

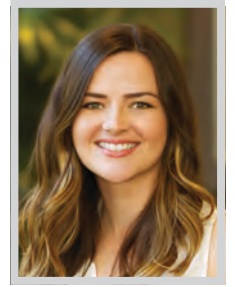
In late 2018, Drake and her team completed the \$100-million Great Park Ice and FivePoint Arena. As senior project manager, she led an 18-person team. One of the largest public facilities of its kind in the nation, the 280,000-square-foot LEED Silver facility features three NHL regulation rinks and one Olympic regulation rink. It hosts practices and competitions for a variety of youth and adult programs, as well as open public skating. It has been recognized industry-wide as one of the most complex ice facilities in the nation, both architecturally and structurally.

**TALIN ESPINOZA**

Director of Business Development
Flatiron Construction

Talin Espinoza is an executive manager with 20 years in the architecture, engineering and construction industry. Currently director of business development for Flatiron Construction Corporation, a heavy civil infrastructure contractor, Espinoza has held numerous leadership positions within well respected engineering and construction companies and on industry boards and organizations. She has been an advocate and supporter of advancement in the area of diversity and equity within the civil construction space.

Espinoza has also served as president of the Construction Management Association of America, Southern California Chapter and was only the fifth female president since the inception of the group. Within Flatiron she specializes in revenue focused market building, strategic growth facilitation and client relationship development.

**MEGAN FAIRLEY**

Integrated Design Manager
McCarthy Building Cos, Inc.

Megan Fairley is highly regarded by her clients, project partners and colleagues for her impressive track record of success and accomplishment. As an integrated design manager at McCarthy Building Companies, Inc., Fairley has a passion for bringing a creative approach to all components of a project. Over her nine-year career, she has successfully delivered large, highly technical multi-million-dollar projects that were long-term complex endeavors.

Fairley leads the integrated design pursuit processes through the permitting phase, working closely with the preconstruction, operations, and design teams to provide insightful feedback when evaluating, developing, and implementing constructible solutions from the documents prepared by the design and engineering teams. She is responsible for managing design risks and opportunities, working with the estimating team to maintain budget and design, developing and monitoring expectations for schedule and quality, and working with the business development team.

HGA



**BEYOND GOOD DESIGN.
DESIGN FOR GOOD.**

CONGRATULATIONS TO OUR OWN

Bitu Salamat AND *Suzanne Jagers*

AND ALL THE 2022 WOMEN OF INFLUENCE.

We thank you for leading the way in creating a more equitable, inclusive, and diverse future in Construction and Design.

HGA.COM

On behalf of the entire team at **Turner Construction Company**,

Congratulations to Vesna Conroy & Jaimie Turner!



Vesna Conroy
Operations Manager



Jaimie Turner
Special Projects Division Manager

**Thank you for your dedication to building the future of Los Angeles
and your leadership in advancing the construction industry.**

**Turner would also like to congratulate all
of the Women of Influence in Construction,
Architecture, and Engineering. Your leadership,
commitment and vision are instrumental in
building the future.**

Turner

www.turnerconstruction.com

CONSTRUCTION, ENGINEERING & ARCHITECTURE



ANNE FLETCHER
Managing Principal
HOK

During Anne Fletcher's three years as HOK's managing principal in Los Angeles, the practice has delivered over \$2 billion worth of projects in planning and design in science & technology, commercial, corporate, healthcare and aviation sectors.

Under Fletcher's tenure, HOK Los Angeles has delivered projects such as the Mark Ridley-Thomas Behavioral Health Center, USC's first LEED Platinum building (The Ginsburg Human-Centered Computation Hall), City of Hope Orange County at Five Point Gateway Hospital, Universal Health Services Inland Valley Replacement Hospital, Kaiser Permanente Baldwin Hills Medical Office Building, San Diego Airport Administration and Facilities building and confidential entertainment, tech and production companies. Additionally, before locating to Los Angeles in 2017, she oversaw the mixed-use practice for HOK's New York studio and led The New La Guardia Airport Master Plan, guiding the complex design and implementation of \$9.5 billion of simultaneous redevelopment.



BIANCA FONTIMAYOR
Marketing Coordinator
The PENTA Building Group

Bianca Fontimayor started her journey with commercial contractor The PENTA Building Group five years ago as the firm's first-ever marketing intern in Las Vegas. A short time later, she was working on and leading multi-million-dollar proposals using InDesign – a program that she had no experience with just a few months prior. She started full-time as a marketing assistant upon graduation. In 2018, she was promoted to marketing coordinator and transferred to PENTA's LA office. In this position, she works on everything from securing new business and managing the company's award-winning internal newsletter to designing marketing collateral and other materials.

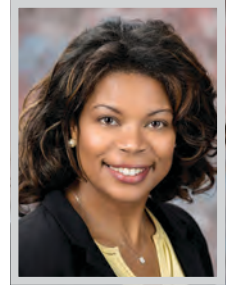
Fontimayor's work in LA on the new business front has been invaluable. Her contributions to proposals, prequalification packages, etc. helped PENTA secure new clients/projects, including the High Desert Mental Health Urgent Care Center, CSU Long Beach Anna W. Ngai Alumni Center and French Market in West Hollywood.



TAYLOR FOWLER
Senior Estimator
DPR Construction

Taylor Fowler is a preconstruction manager at one of Los Angeles County's leading self-performing general contractors, DPR Construction. With more than 12 years of experience at DPR Construction, Fowler has been an integral part of the preconstruction process at all phases of design. She is also part of the Southern California business unit leadership team, assisting with both local and national operations and business development strategies.

Focusing primarily on technical projects in life sciences and healthcare, Fowler has worked to improve traditional preconstruction workflows, utilizing lean practices and model-based costing tools to inform design. She led the preconstruction team on the UHS Behavioral Health project in Chino Hills, which worked as an integrated team to design and install the very first prefabricated exterior wall panels through OSHPD I, breaking new ground and setting a new precedent in OSHPD – the statewide department that monitors healthcare infrastructure.



CYNTHIA GUIDRY
Director of the Long Beach Airport
City of Long Beach, Long Beach Airport

Long Beach City Manager Patrick H. West recently named Cynthia Guidry as the City's director of the Long Beach Airport (LGB). Guidry brings 26 years of local government experience in various leadership positions including 14 years in airport management. For the past five years, Guidry has served as the deputy executive director for the City of Los Angeles World Airports (LAWA), the governing body for LAX and Van Nuys Airports. There, she oversaw more than 400 employees in the LAWA Planning and Development Group. She also has managed employees in the LAWA Planning, Environmental, Engineering and Facility Management Divisions.

Guidry has a background in civil engineering and project management. At LAWA, she led efforts developing new policy and procedures for LAWA's Capital Improvement Program and managed multi-billion-dollar capital improvement projects. She also has been responsible for construction safety, logistics, inspections and quality assurance programs.



CONGRATULATIONS



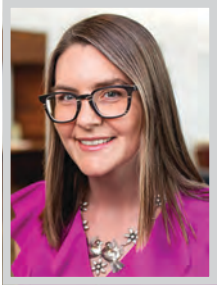
Anne Fletcher
AIA, NCARB, LEED AP
MANAGING PRINCIPAL



Adaeze Cadet
AIA, NOMA, NCARB, LEED BD+C
DESIGN PRINCIPAL

HOK congratulates our own Anne Fletcher and Adaeze Cadet, and all of the Los Angeles Business Journal's 2022 **Women of Influence: Construction, Architecture, and Engineering.**

CONSTRUCTION, ENGINEERING & ARCHITECTURE

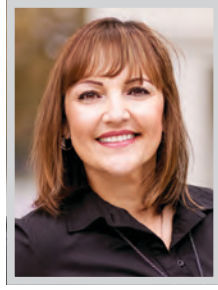


PATTI HARBURG-PETRICH

Principal and US Aviation Sector Leader, West Coast
Buro Happold

Patti Harburg-Petrich, S.E., LEED AP BD+C serves as principal and US Aviation co-lead for Buro Happold, managing the aviation market sector. Two significant projects under her leadership are the concept validation for the new Replacement Passenger Terminal at Hollywood Burbank Airport and the new Midfield Satellite Concourse South at LAX, both of which have sustainable design ambitions. Harburg-Petrich recognizes the opportunity to drive financial and physical resilience through sustainability at airports and is helping her airport clients make meaningful commitments to sustainable development through strategies such as net zero energy and carbon neutrality.

Recently, Harburg-Petrich has been exploring the use of offsite construction techniques for large volume projects. She has served as a resource for owners, contractors, and designers. As an interdisciplinary project director, she has experience leading teams for many building types in addition to aviation, including commercial, civic, and education.

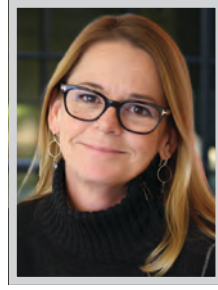


ILEANA HOLGUIN

Vice President, Project Executive
McCarthy Building Cos, Inc.

Ileana Holguin is a vice president, project executive with McCarthy Building Companies, Inc. During her 21 years with the company and more than two decades in the industry, she has worked on a variety of successful healthcare, education, commercial and parking structure projects in Southern California. She leads design and construction teams to deliver results for clients across McCarthy's Southern California region.

Holguin is well-known in the industry for her knowledge and skills in project planning, scheduling, budgeting, pre-construction and strong construction operations as well as her strategic thinking and unique ways to develop and maintain client and trade partner relationships. Holguin has a large portfolio of successful projects, with one of her recent accomplishments being leading the pre-construction and proactively influencing the construction efforts for the Providence Tarzana Parking Structure Project, winning two awards in 2020 from the National Parking Association: "Innovative Facility" and "Sustainability Project of the Year."



SUZANNE JAGGERS

Principal & Associate Vice President
HGA

Suzanne Jagers, Associate AIA, LEED GA, EDAC is a principal at HGA in its Los Angeles office. She leads client relations, team processes, and new business opportunities for the Healthcare Practice Group serving the Greater Los Angeles area and Southern California market. Jagers is passionate about her role of planning and design in promoting health and healing and she places a high value on the process of discovery, continual learning, and understanding.

Since 1988, Jagers has been solely focused on the development of healthcare facilities and their outcomes. Today, as the world grapples in the wake of COVID-19, the professional focus has shifted to a new, more hidden pandemic: behavioral and mental health. The work Jagger is doing in this sector is perhaps what she's most proud of so far, with a focus on mental health - Santa Clara County and UCLA Neuropsychiatric Hospital, as examples.



JENNY JIN

Senior MEP Project Manager
Webcor

Jenny Jin is no stranger to the determination, passion, and ambition required to effectively chase the "American Dream." In 2009, she tackled the challenge of learning English as a second language while earning a degree in Mechanical and Aerospace Engineering from Syracuse University.

Jin believes her unique openness to new experiences and passion for learning and development are two of her greatest assets. The past two years of her professional journey have been nothing short of groundbreaking. After moving from New York to Los Angeles, Jin transitioned from the developer to the general contractor side as a Senior MEP Project Manager for Webcor, an industry-leading California builder. She enjoys working on complicated projects with aggressive schedules and budgets and currently manages a \$400 million residential tower in downtown Los Angeles. Jin's unique blend of design, developer, and construction experience has propelled her to becoming a standout in her industry.



Jessica Drake
Sr. Project Manager



Lizzy Vlassopoulos
Project Manager

Empowering Women in Construction

Congratulations to Swinerton's very own **Jessica Drake** and **Lizzy Vlassopoulos** on being named two of *Los Angeles Business Journal's Women of Influence: Construction, Architecture, and Engineering!* We are extremely proud of their contributions to our firm, not just as women, but as two of the most dedicated individuals in the construction industry as a whole. As women comprise only 10% of the industry workforce, Swinerton wholeheartedly supports Jessica and Lizzy's goal to inspire women to bridge the gap and empower them to join the industry.



CONSTRUCTION, ENGINEERING & ARCHITECTURE



ELISE JOHNSON
Director of Construction
 Goldrich Kest

Elise Johnson has overcome multiple barriers as an African American female in the construction industry. She spent years coming up through the trades gaining credibility through experience and education to become the new face of construction and department head at Goldrich Kest.

After serving in the US Marine Corps, she became aware of the need for further education and leadership training to compete in construction as a woman. With an M.S. in Engineering Management & Leadership, she joined GK in 2018 as a project manager thinking she would start slowing down to prepare for retirement. Her skills were put to the test, and she rose to the challenge. In two short years she was chosen to build and lead a team that is tasked to partner and align itself with GK's KPIs of growth and engagement to become a leader in the industry.



MARY JREISAT
Project Manager
 Shawmut Design and Construction

Mary Jreisat cut her teeth on a project that was part of the Bringing Back Broadway economic development plan to revitalize the historic Broadway corridor in Downtown Los Angeles, regenerating buildings and transforming them into attractive destinations to strengthen DTLA's appeal to both locals and tourists. Jreisat worked on the conversion of a 10-story, 90,000-square-foot building into a 174-key boutique hotel, The Hoxton, DTLA.

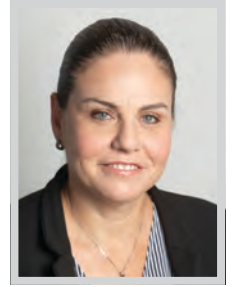
Jreisat has worked on some of the city's most high-profile projects—from hotels in DTLA to developments in major growth areas. Mary recently completed boutique bakery Breadblok's new location in Silver Lake, project designed and built by women, for women. She completed the Cutwater Coronado Club and Lexus Premium Suites at Petco Park, and is now back with the team renovating all of the premium suites at the ballpark. She is also currently overseeing a demolition development in Hollywood.



JAN KARL
Vice President, Project Development
 Morley Builders

Jan Karl's career builds upon a successful and strong foundation in construction, coupled with a background in real estate development and services. As a senior leader on the Executive team at Morley Builders and an officer in the firm, she paves the way for the firm's strategic development and planning, focusing on guiding the company to its next era of success via smart, strategic growth. In addition to strategic planning, she oversees marketing, public relations, client relations, and business development.

In addition to revenue growth, one of Karl's greatest accomplishments is the mentorship of women in the Construction industry. Jan has succeeded and thrived in an industry traditionally dominated by men and has a goal to help as many women as possible towards success. Transcending gender barriers, Karl understands the importance of assisting as many women as possible toward achieving their goals.



JENNA KNUDSEN
Managing Principal
 CO Architects

Jennifer "Jenna" Knudsen is CO Architects' first female leader and its youngest in the firm's 35-year history. For nearly 20 years, Knudsen championed CO's technology-in-practice efforts to design healthcare, scientific, and complex institutional buildings for maximum efficiency in constructability, energy performance, operability and outstanding design. These efforts have been recognized with multiple American Institute of Architects (AIA) Technology in Architectural Practice BIM Excellence Awards.

Knudsen's passion for technological innovation has helped keep CO at the forefront of the industry through such programs as its Virtual Operating Room Experience. This environment uses AR/VR to create a virtual operating room, where physicians can work virtually and provide feedback to help CO optimize real-world OR designs. Knudsen is a frequent speaker and presenter on Building Information Modeling enabled integrated project delivery to improve efficiency and sustainability in architecture and construction.



**Congratulations
 Ellen Mair**

Los Angeles Business Journal's
 2022 Women of Influence:
 Construction, Architecture
 and Engineering



Congratulations to our own Ellen Mair, vice president of business development, and all other honorees for their trailblazing work in the construction industry.

CONSTRUCTION, ENGINEERING & ARCHITECTURE



SARA KORNBLOTT

Partner
Gibbs Giden Locher Turner Senet
& Wittbrodt LLP

Sara H. Kornblatt is a law partner whose practice is concentrated in both the development and management of construction projects as well as handling claims and complex litigation matters. She is skilled in drafting and negotiating bid and contract documents for owners, contractors, and subcontractors and handling bid protest and subcontractor substitution issues for both public entity owners and bidders. She represents clients in both litigation and arbitration, and has successfully advocated for them before the California Court of Appeal. She has served as second chair trial counsel in two multi-million dollar construction disputes.

Kornblatt's unique experience in both contract drafting and litigation is an advantage for clients at all stages of a project. She drafts and negotiates bidding documents, requests for proposals, prime contracts, design-build contracts, subcontracts, consultant agreements, and master subcontract and supply agreements.



SARAH LANDSBERGER

Commercial & Risk Manager, Project Support
Webcor

The past 18 months of Sarah Landsberger's career have showcased her vast array of acquired skills. After leading a \$400 million high-rise residential project in downtown LA as project director, she transitioned to a corporate commercial and risk position within Webcor's Project Support group with a focus on Southern California.

In 2016, Landsberger moved from her native Australia to Los Angeles. Her unique blend of global experience includes an intimate knowledge of the California construction industry. In her current role, she uses her commercial and risk management background to advise on Webcor's risk appetite, tolerances, and culture within the fast-paced and quickly expanding California construction industry throughout all phases of the project life cycle. She has worked tirelessly to ensure she is a trusted partner to teams across all Webcor offices and works directly with project teams, while bridging the gap between departments, seeking solutions as both a leader and navigator.

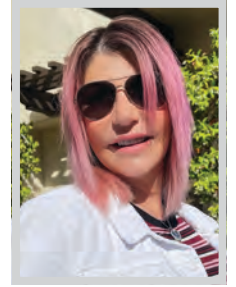


DIANNE LEE

Executive Director
Kitchell

Dianne Lee, executive director of Kitchell, recently published a book: *Leveraging Stereotypes to Your Advantage* in 2021. She is a champion of women in construction and creates platforms focused on the contributions and elevation of women's roles in a complex and challenging industry and has become well-respected throughout the industry.

Lee moderates at 10 panels a year for a variety of organizations on critical construction issues; has been instrumental in leading the pursuits of major projects - a partial list of clients includes Dignity/Common Spirit Health; Kaiser Permanente; Los Angeles County Department of Public Works; Los Angeles Community College District; Los Angeles World Airport; Los Angeles Unified School District; University of Southern California (USC); Santa Monica Community College; City of Los Angeles (on call professional services); Mubadala Investment Company in Abu Dhabi; and many others.



SUSAN LITTLEFIELD

Partner
HPA, Inc.

Susan Littlefield, a partner at HPA, is a role model to many. For the past 28 years that Littlefield has been with HPA she has been the inspiration and guiding force behind the design team. Starting with the hand sketches and visualizing with colors and material, to then making her vision come to life, is something no one can do like her.

Littlefield's extensive knowledge and design skill and experience from the landscape to exterior and interior design an sit planning on hundreds of perfect buildings over the years. She has designed hundreds of buildings from traditional style to the most contemporary high-end style for the past 28 years she has been at HPA. Her designs have been recognized by the LA Business Journal as the best commercial/ industrial buildings multiple times. The absolute volume that she has designed can be seen all over Southern California.

Empowering Others

Congratulations to our own **Patti Harburg-Petrich, SE** Principal US West Coast Aviation Sector Leader

on being named a Women of Influence, and to all the outstanding women in the engineering, construction and architecture industries who are leading the way.



BURO HAPPOLD
www.burohappold.com

MEGAN

FAIRLEY

Senior Integrated Design Manager



Congratulations

Congratulations to our partners for their recognition and exceptional contributions as Women of Influence in Construction to our Los Angeles communities.

MCCARTHY

mccarthy.com
License No. 411173

ILEANA

HOLGUIN

Vice President,
Project Executive



CONSTRUCTION, ENGINEERING & ARCHITECTURE

**LIZ MAHLOW**

Founding Principal
Nous Engineering

Liz Mahlow is a founding partner at Nous Engineering. She is a licensed engineer with over 15 years of professional experience in the construction industry. She has managed large scale, fast-track projects within the US and internationally. Through her structural engineering practice, she has worked to strengthen collaboration and diversity among practitioners in order to create best possible solutions for the project and community.

Mahlow's projects include large hospital campuses and schools in Africa to affordable housing in Los Angeles, emphasizing seismic design and education of building performance outcomes. As faculty at Woodbury University, she taught multiple courses with an emphasis on collaboration between architectural intent and structural performance. She has acted as vice president of development of the Los Angeles Forum for Architecture and Urban Design and currently serves on the Advisory Board for the Architectural Engineering Department for Cal Poly, San Luis Obispo and for the LA Forum.

**ELLEN MAIR**

Vice President of Business Development
Skanska USA Building

Ellen Mair began her career as a business analyst at Skanska, and her drive and determination have been rewarded with repeated promotions to prominent leadership positions: first, to director of research and analysis, where she led national business planning efforts; then, to director of business development for Los Angeles; and most recently, to vice president of business development for Southern California. Her rise through Skanska's ranks is reflective of her widespread expertise and unceasing commitment to her team and the clients she serves.

In Mair's current role, she has helped grow Skanska's local office footprint by winning new work in key markets such as healthcare, aviation, education and commercial construction across Southern California through a relentless focus on relationship building, strategic foresight and collaborative pursuit planning. Her talent and successes have been integral in increasing Skanska USA Building's presence and brand recognition in Los Angeles.

**ANNIE MARK**

Senior HR Generalist
Howard Building Corporation

After more than a decade in HR, recruiting, and workforce planning for companies such as Broadcom and Option One, Annie Mark came to Howard Building Corporation in 2017 to help jumpstart its HR Department. From analyzing employee surveys and building new programs like HBC University and Wellness out of the data, to helping HBC control vendor contracts, launch new benefits, and implement a new HRIS and payroll system, she has been an instrumental administrator behind the scenes while taking every necessary moment for employee-owners' individual needs.

Mark is deeply passionate about the welfare of HBC employees, and has built a robust Wellness Committee to address wellness-related topics and concerns. Last May, she developed a month-long educational campaign surrounding mental health awareness. In addition to webinars and other learning events hosted throughout the month, employees participated in a succulent planting event to help spur community and decrease stress.

**KRISTEN MAYS**

Director of Marketing and Business Development
ECC

With 20 years marketing and business development experience, (nearly 15 years in the Los Angeles AEC industry), Kristen Mays brings a wealth of knowledge and skills to her director of marketing and business development role at Environmental Contracting Corporation (ECC). Her ability to identify business opportunities and build strong industry relationships, while simultaneously developing and executing marketing strategies ensures that ECC project teams and clients are connected and receive the highest level of service throughout each project.

Throughout her career, Mays has successfully utilized her analytic and creative talents, as well as her love of people to locate and win numerous profitable architecture and construction projects throughout the Greater Los Angeles area. While doing so, she has successfully gained a reputation of excellence in all she does and pays it forward through extensive non-profit and mentorship work in the LA community.



CONGRATULATIONS ELLEN WAY

A Women of Influence: Construction,
Architect & Engineering

Shangri-La Construction is inspired by your integrity, expertise, and commitment. Your work has opened doors of opportunity for countless women in the construction industry.



CONSTRUCTION, ENGINEERING & ARCHITECTURE



INGRID MERRIWETHER

President & CEO

Merriwether & Williams Insurance Services

Merriweather & Williams' president and chief executive officer Ingrid Merriwether enjoys applying over 25 years of insurance brokerage experience to overseeing production, marketing and corporate operations. She serves as client executive on several of the firm's large accounts including the City and County of Los Angeles, City and County of San Francisco, and San Diego Regional Airport Authority, and takes an active role in initial risk exposure analyses and insurance/risk management program design.

Merriweather is the chief architect of the firm's Contractor Development and Bonding programs, administered on behalf of major public entities and jurisdictions, and enjoys collaborating with clients, contractors and community members to create mutually beneficial outcomes. Collectively, these programs have enabled small and minority contractors to bid on over \$874 million in public works construction projects to-date, establishing strong bonding credit and building the foundation for ongoing business success.



EMMA MOLLOY

Senior Project Engineer

The PENTA Building Group

Emma Molloy, senior project engineer at LA general contractor The PENTA Building Group, outshines among the top in her field as she continues to advance in a company culture ripe for professional excellence.

Molloy considers one of her most successful career achievements to be PENTA's work (and her involvement) with the planning and complete ground up construction of the 9,900-square-foot High Desert Mental Health Urgent Care Center (MHUCC) in Lancaster. Operated by the Los Angeles County Department of Mental Health, MHUCC is part of the larger Los Angeles County High Desert Regional Health Center, which sits on a 15-acre campus. The facility serves local children, adolescents and adults suffering through a crisis and in need of immediate treatment. Molloy was particularly involved with taking the lead on the project's finishes and landscaping. With leadership from Molloy, the safety and wellbeing of the patients were a priority throughout the process.



WEDNESDAY MOORE

Lead Estimator and Project Manager

Del Amo Construction

Wednesday Moore is a lead estimator at Del Amo Construction with over 27 years in the construction industry. She has developed long-standing relationships with subcontractors, design professionals, and clients by providing proactive value engineering. Moore believes the most important part of the preconstruction phase is to preserve the overall project design intent, while maintaining the clients' budgets. She has a passion for navigating the relationships between owners, financing entities and end users.

Over the last few years, Moore has worked on a number of high-profile projects, but most notable is The Press, the former Los Angeles Times printing press warehouse and press room, located in Costa Mesa. It is Del Amo Construction's largest project to date at \$140 million. The Press was reimaged into a creative work campus, comprised of 249,000 square feet of warehouse and 112,000 square feet of office building on 21 acres of land.



GINNA NGUYEN

Associate Principal

Relativity Architects

Ginna Claire Nguyen runs the day-to-day operations as associate principal of Relativity Architects, a 50-person DTLA firm that specializes in designing affordable housing, production studios, hospitality and institutional projects. Nguyen's duties include overseeing design direction among the firm's architects, project management, studio development, administration and training. She was the firm's fifth employee, hired a year after its inception as director of design. She advanced to studio director and was recently promoted to associate principal.

Nguyen has been a team leader on several award-winning projects, including the 2020 Architecture Masterprize Award in the Social Housing category for Imagine Village Apartments, a forward-thinking affordable-housing community for families and military veterans in Lancaster. The innovative 7th & Witmer Apartments near Skid Row, the first project in Los Angeles to employ a combined grey-water/stormwater system, was also an Urban Land Institute Jack Kemp Award finalist for Affordable Housing.

CONGRATULATIONS

to our employee-owners for being recognized as **Women of Influence**



SHARON CHRISTENSEN



ANNIE MARK

HBC would like to congratulate Sharon and Annie for being recognized as Women of Influence in the Construction, Architecture, and Engineering industry by the *Los Angeles Business Journal*. We look forward to what these amazing employee-owners have in store for the future!

Learn about how we're working towards a more equitable and inclusive industry at <https://howardbuilding.com/community>



Congratulations to our very own

ELISE JOHNSON

for being recognized as one of this year's LABJ's Women of Influence in Construction, Engineering and Architecture.

Goldrich Kest has been helping women rise to the top for over 60 years.



GOLDRICH + KEST
Welcoming you home since 1957

GoldrichKest.com

CONSTRUCTION, ENGINEERING & ARCHITECTURE



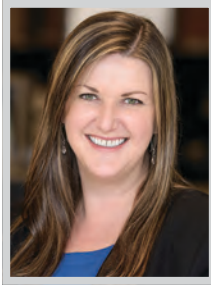
THEODORA OYIE

President & CEO

Mindful Integration of Construction Services

Rooted in equity, Theodora Oyie has championed diversity and inclusion within the construction industry for women and disenfranchised populations for decades. As president & CEO of Mindful Integration of Construction Services, she leads the firm’s operations. Her unique and diverse expertise and skillsets as owner representative, jobs coordinator, DBE/ supplier diversity consultant, community outreach director, labor compliance officer, as well as PLA administrator immensely benefit contractors, owners, as well communities impacted by respective projects.

Oyie helps craft strategies and processes that guide executives on pursuits; and enable project teams to meet contractual provisions that include local worker hire, diverse and disadvantaged businesses, project labor agreement, and labor compliance. Her deep understanding of client goals, collaborative and respectful approach with project teams, contractors, unions, and community-based partners has consistently delivered projects that exceed goals.



KIM PATTEN

Partner & Higher Education Practice Leader
Steinberg Hart

Kim Patten, AIA is a role model for fellow female colleagues in the AEC community, balancing a full family life as a mother of two with her expanding career within the Steinberg Hart practice. Having been named partner within the firm before the age of 40, Patten has distinguished herself as the firm’s national practice leader for higher education through the creation of student-centered living and learning communities and advancement in interdisciplinary learning environments.

As a member of the five-person board of directors for Steinberg Hart Holdings, Patten has been instrumental in shaping the firm culture through her leadership on design justice, equity, diversity, and inclusion initiatives, pioneering the firm’s Culture Club, and implementing an Advocate Program designed to facilitate professional advancement. Her professional perspective has been critical to ensuring we continue to guide and enhance the professional experience of Steinberg Hart’s staff.



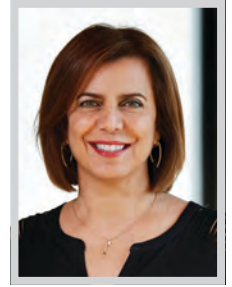
JENNY REDLIN

Founder, Principal

Partner Engineering and Science, Inc.

Jenny Redlin, principal and part-founder of Partner Engineering and Science, Inc. (Partner) is a secret weapon in the construction, engineering, and environmental industry. Redlin entered the commercial real estate industry with an impressive start as an environmental scientist who continued to build her armory by performing environmental site assessment field work. She then quickly excelled into senior positions due to her ability to not only identify and understand a great depth of technical environmental issues but also her ability to target her clients’ business priorities and distinguish how her work fits into that market.

A defining moment in Redlin’s career was leaving the stability of a traditional firm and founding Partner in 2006. Redlin routinely educates, promotes, and shares her wealth of knowledge on best practices in our business, industry and the “big picture,” to help safeguard safer commercial real estate transactions.



BITITA SALAMAT

Principal & Associate Vice President
HGA

Bitita Salamat, AIA, LEED AP is a principal/associate vice president at HGA in Los Angeles. With over 25 years of experience, she has focused her practice on tenant improvements, workplaces, corporate headquarters, and corporate campuses for a variety of clients ranging from entertainment, technology, and corporate headquarters to civic and government buildings. Salamat’ projects have been published nationally and recognized by the International Interior Design Association, Los Angeles Business Council, and Los Angeles Business Journal.

Since joining HGA in 2017, she has brought her knowledge and expertise in interior architecture, workplace strategy, and sustainable design for technology and entertainment/media clients to the firm. Her accomplishments include design strategies for studio production, post-production, and workplace solutions.



COVID-19 is disrupting routines and turning care for someone with dementia into a potential nightmare for families.

Alzheimer’s Los Angeles provides the critical care families need more than ever.

Contact us...we’re here for you.

**INFORMATION.
SUPPORT. HELP.**

 **Alzheimer’s**
LOS ANGELES | **844.HELP.ALZ**
AlzheimersLA.org

Congratulations

JENNA KNUDSEN

On being named one of LABJ’s Women of Influence: Construction, Architecture & Engineering.

CO Architects congratulates all of the Women of Influence.



CO ARCHITECTS
www.coarchitects.com

CONSTRUCTION, ENGINEERING & ARCHITECTURE

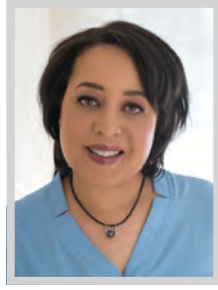


MARCY SCHULTE

Principal, Executive Director - Design + Performance
Cunningham

During her 30-year career as a creative professional, Marcy Schulte has shaped and led a nationally recognized design practice. Schulte relocated to Los Angeles six years ago, where she has played a role in shaping beautiful, innovative, and already-iconic structures in the region. One of the most recent notable projects is Pendry West Hollywood Hotel and Residences, a \$280 million mixed-use development on the Sunset Strip that was completed in May of last year, with Schulte leading the charge in the re-engineering, re-skinning, and re-conceptualizing of the project to successfully bring it to the finish line.

Other notable L.A.-area projects include Hyatt Place Pasadena; Millennium Santa Monica Multi Family Residential project, DTLA Select Service Hotel, a \$70 million hotel in South Park in development; Figueroa Hotel, in development and the un-built Habitat for Humanity of Greater Los Angeles Headquarters and ReStore design.

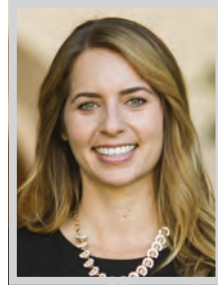


PAULA STAMP

Director, Business Development
PCL Construction

PCL Construction's Director of Business Development, Paula Stamp's career accomplishments span not only her specific field of marketing and client development but also research and initiatives that positively impact stakeholders, partners, and the community. Her unique background that melds academics with being a real-world practitioner yields quantitative results PCL's clients benefit from and creates value for the firm.

Among Stamp's accomplishments have been her work leading business development training across the \$1 billion PCL California Buildings District; her efforts as primary PCL lead for Los Angeles World Airports pursuits, integral to securing the LAX West Gates at Tom Bradley International Terminal (\$1.4 Billion) and Consolidated Car Rental Facility (\$1.1 Billion) projects; and her contribution of expertise in higher education.

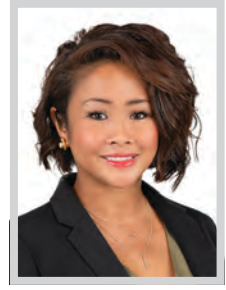


JAIMIE TURNER

Special Projects Division Manager
Turner Construction Company

Jaimie Turner joined Turner Construction Company 11 years ago as a project engineer in the Los Angeles Office. After only two years on site, she was quickly promoted to business development engineer where she helped to secure key sales and client relationships in the Southern California region. After returning to the field, Turner focused on interior renovations and infrastructure projects within Turner's Special Projects Division (Turner SPD).

Turner progressed quickly through positions of increasing responsibility building the trust of owners, architects, and her teammates. In 2018, she was promoted to senior project manager for Turner SPD where she successfully positioned Turner SPD for growth in the region. Upon the success of her work on construction projects in the region, she was promoted to division manager of Turner SPD in 2019. As division manager, she is now responsible for the overall performance of Turner SPD.



JAMILA VALERO

Design Integration Manager
DPR Construction

Jamila Valero is a design integration manager at one of Los Angeles County's leading self-performing general contractors, DPR Construction. She focuses on the integration of multiple disciplines and trades to achieve efficient and thorough project coordination primarily within the healthcare, higher education and life sciences markets.

Bringing more than 14 years of experience working on both new and renovation projects, Valero began her career as a registered architect and has collaborated on all phases of design and construction at the global design, architecture, engineering, and planning firm. With her passion in the technical execution of the built environment, Valero's transition to the general contracting world has been seamless. As design integration manager at DPR Construction, Valero focuses on bridging the gap between design and construction and excels at interfacing with project teams to develop and monitor expectations and execution for schedule, quality and cost during the design and documentation process.

LOS ANGELES BUSINESS JOURNAL

2021

GOLD WINNER:
MOST IMPROVED PUBLICATION

"Issues after the changes are design-driven and bolder."

SILVER WINNER:
BEST ANCILLARY PUBLICATION: WEALTHIEST ANGELENOS

"This is a solid package with excellent reporting and aggregation."

SILVER WINNER:
BEST BODY OF WORK, SINGLE WRITER: HOWARD FINE

"Howard Fine mines unpredictable territory to find stories that surprise and satisfy."

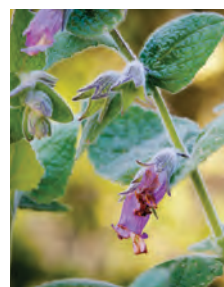


Congratulations
Cassy Aoaygi!

One of Los Angeles Business Journal's 2022 Women of Influence: Construction, Architecture & Engineering

Los Angeles is safer, cleaner, healthier, leafier, bloom-filled, more authentic and resilient for your influence.

Your FormLA Landscaping team and friends at USGBC-LA, Theodore Payne Foundation, Eat.Sleep.Work, and Killian Communications are grateful for your leadership and dedication to community! We appreciate and congratulate you and all 2022 Women of Influence: Construction, Architecture & Engineering honorees.



FormLA.com

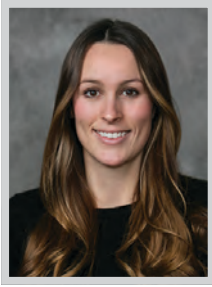


USGBC-LA.org



TheodorePayne.org

CONSTRUCTION, ENGINEERING & ARCHITECTURE



LIZZY VLASSOPOULOS
Project Manager
Swinerton Builders

Lizzy Vlassopoulos specializes in high-end, large-scale tenant improvements. She has successfully managed and served on a wide variety of projects over the last 10 years, including data centers; television studios; airport seismic retrofits and terminal redevelopments; office buildouts; and more. In her last year at USC, she was offered an internship by Swinerton. During this time, she knew that the teamwork, problem solving, and fast-paced nature of construction was where she truly belonged. Ten years later, she remains at Swinerton and is doing exactly what she loves. Her goal is to constantly increase her knowledge of construction, create key partnerships across the industry, and continue to grow at Swinerton on the Operations side of the business.

Most recently, Vlassopoulos managed the completion of Swinerton's Special Projects Division's largest project in history, a Culver City-based, \$60-million project.



HANH VU
Project Manager
W.E. O'Neil Construction Co.

Hanh Vu's remarkable rise from a part-time project administrator to being a star project manager has been a long journey achieved through sheer determination. Vu works full-time, raises two preschoolers, takes care of aging parents, and still manages to be the engine that keeps her high intensity construction projects moving forward seamlessly. Vu has worked on some high-profile projects while with W.E. O'Neil and is a mentor to project engineers and administration.

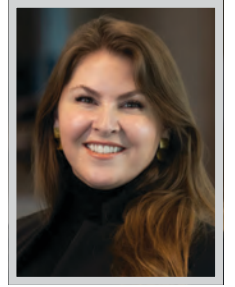
Vu's recent project accomplishments include the new 215,000 square foot Lifestyle Center in Long Beach. Vu led the 23-person team to a successful and profitable completion. Vu is also currently a part of the West Edge project in Los Angeles, a new mixed-use project with 200,000 square feet of creative Class A office space, private landscaped terraces over five floors, 600 Type III (wood-frame) apartments, 90,000 square feet of retail amenities, and half an acre of open-air plaza.



ELLEN WAY
Director of Field Operations
Shangri-La Construction

Ellen Way has been a trailblazer throughout her 35-plus-year career – a career that started on a Boston construction site in 1979, when Way became one of the first women to join the local laborer's union, and quickly began shattering expectations of the men she worked with. Today, more than 40 years later, Way is still shattering stereotypes, though her success is less of a surprise to those she works with. She has served as senior superintendent and now director of field operations for Shangri-La Construction, one of the region's leading construction firms focused on affordable and sustainable development.

Way's LEED AP certification distinguishes her as a green building expert who implements sustainable practices and helps reduce environmental impact in construction of new buildings. At Shangri-La, she is helping the company focus on affordable and environmentally friendly development throughout the region, covering everything from housing to hotels to high schools.



TIFFANY WHIPPLE
Senior Project Manager
PCL Construction

Tiffany Whipple is the highest-ranked woman in an operations role at PCL Construction's California Buildings District. Whipple excels at leading large scale and high-profile projects in technically-complex environments; her project portfolio includes work on legacy projects such as the LAX Midfield Satellite Concourse, the Conference Center at LA Live! and American Dream as well as UCLA's Le Conte Apartments, a high-rise development of student housing. To date, the cumulative contract value of Whipple's project portfolio is over \$5 billion.

At the nearly \$2 billion mega project in New Jersey, American Dream, Whipple oversaw the rides, slides, theming, pools and exterior building envelope. At the recently-opened LAX West Gates at Tom Bradley International Terminal project, she oversaw the exterior envelope, managing several teams across five structures. She is also senior project manager overseeing the construction of two student housing projects at UCLA.

LOS ANGELES BUSINESS JOURNAL

REAL ESTATE SPOTLIGHT

ALIGN YOUR BUSINESS WITH OUR EXTENSIVE **COMMERCIAL** REAL ESTATE PORTFOLIO

The **Los Angeles Business Journal** is committed to providing the leaders of Los Angeles with information on important real estate related topics such as development and land use, vacancy rates and brokerage, and architecture and building trends.

LISTS

- City Contractors
- Commercial RE Developers
- Architectural Firms
- Commercial RE Brokerage Firms
- General Contractors
- Infrastructure Construction Projects
- Largest Construction Projects
- Property Management Firms

SPECIAL EDITIONS

- LA500
- 2023 Book of Lists

SPECIAL REPORTS

- Real Estate Quarterly
- L.A. Rising
- Long Beach on the Rise
- Industrial Real Estate

LEADERS OF INFLUENCE

- Women CRE Brokers (Office & Industrial)

CUSTOM CONTENT

- Who's Building L.A.

EVENTS

- Commercial Real Estate Awards
- Real Estate Trends



For more information and to secure space, please contact **Tom Holmes** at tholmes@labusinessjournal.com